

Parts List
for Portable Generators
English

QAS 150 Jd



Engine 6068 Jd

QAS 150 Jd

Parts Index 5

Warranty and Liability 7

Safety Precautions for Portable Generators..... 9

Ordering Spare Parts..... 8

Parts Lists 14



Engine 6068 Jd

Printed Matter N°

1310 3012 43

01/2012

PARTS INDEX

PART	PAGE	PART	PAGE	PART	PAGE
A		COOLANT HEATER	32, 33	FRAME AND FUEL TANK KIT	28, 38, 39
ADAPTER	22, 34, 32, 35	COOLANT LEVEL SWITCH	22	FRAME AND MOUNTS	18
AIR FILTER	21	COOLER	22	FRONT ROOF ASSEMBLY	28, 51
AIR FILTER ELEMENT	21	COOLER SUPPORT	28	FRONT ROOF	51
AIR INLET	21	COOLING SYSTEM	22	FUEL CAP	38
ALTERNATOR	20	CORNER PANEL ASSEMBLY	28	FUEL FILTER	14, 15
ALTERNATOR ASSEMBLY	20	COUPLING	54	FUEL LEVEL SENSOR	38
AMMETER	36	CUBICLE ASSEMBLY	36, 37, 19	FUEL SYSTEM	34
		CUBICLE DOOR ASSEMBLY	28, 49	FUEL TANK	38
		CUBICLE SHEETMETAL	36	FUSE	36
B				FUSE HOLDER	36
BAFFLE ASSEMBLY	28	D			
BALL VALVE	35	DECAL	54	G	
BAFFLE ASSEMBLY	28	DOCUMENT HOLDER	28	GAUGE AIR CLEANER	21
BARRIER	36	DOOR ASSEMBLY	28, 45, 46, 47, 48	GEN MOUNTIN HARDWARE	54
BARRIER TERMINAL BLOCK	36	DOOR	45, 46, 47, 48, 49	GROMMET	54
BATTERY	24	DOOR PLEXI GLASS	36	GROUND STRAP	24
BATTERY CABLE	24	DOOR TERMINAL BOARD	36		
BEAM	38	DRAINS	35	H	
BODYWORK	28, 29			HANDLE	45, 46, 47, 48, 49
BUSBAR LINE SIDE	36	E		HARNESS	54
BUSHING	22	ELBOW	21, 35	HINGE	40, 41, 42, 45, 46, 47, 48, 49
		ELBOW PIPE	34, 32	HOSE	34, 32, 54
C		ELECTRICAL SYSTEM	24, 25	HOSE ASSEMBLY	35
CABLE	19	EMERGENCY STOP	36	HOSE CLIP	54
CABLE GLAND	36	ENGINE	23	HOSE CLAMP	34, 32, 35
CABLE TY	24	ENGINE COOLANT	17	HOSE SLEEVE	21
CANOPY SET	28	ENGINE DATA REPORTING	23	HOUSING	36
CIRCUIT BREAKER	36	ENGINE DIESEL	23	HYD ACTUATOR	54
CLAMP	38	ENGINE OIL	16	HYD BRAKE TUBE	54
CLEARANCE & MARKER LAMP	54	EXHAUST PIPE	26		
CLEARANCE LIGHT GROMMET KIT	54	EXHAUST PIPE OUTLET	26	I	
CLEARANCE LIGHT REFLECTOR	54	EXHAUST SHIELD	26	INFORMATION LABEL	30
CORNER PANEL ASSEMBLY	28, 41, 42	EXHAUST SHIELD SUPPORT	26	INSERT MALE	36
CORNER PANEL	41, 42	EXHAUST SYSTEM	26, 27	INSERT THD	28
COVER	51			ISOLATOR	36
CONSPICUITY TAPE	54	F			
CONTACT AUXILIARY	36	FAN	22	J	
CONTACT BLOCK	36	FILTER FUEL TANK VENT	34	JACK HANDLE	54
CONTACT MALE	36	FLANGE	38	JACK W.A.	54
CONTACTOR	36	FLANGE FUEL TANK	38		
CONTROLLER	36	FRAME	38		
COOLANT DRAIN VALVE	35				

PARTS INDEX

PART	PAGE	PART	PAGE	PART	PAGE
K		P		SERVICE PANEL ASSEMBLY	28, 43
KEY	28	PALETTE	38	SHUNT TRIP	36
L		PANEL	52	SPACER FAN	22
LABEL BECAUSE WE CARE	30	PANEL ASSEMBLY	28, 52	SUPPORT	28, 38
LABEL CALIFORNIA EMISSIONS	30	PANEL ASSEMBLY FUEL FILL	28, 40	SUPPORT AIR FILTER	21
LABEL CAUTION HOT EXHAUST	30	PANEL FUEL FILL	40	SWITCH	36
LABEL COOLANT	30	PANEL DOOR CUBICLE	36		
LABEL EMERGENCY STOP	36	PANEL SOCKET	36	T	
LABEL GENUINE PARTS	30	PARCOOL EG	17	TAPE	54
LABEL LOGO BLACK	30	PAROIL E	16	TEE	54
LABEL LOGO WHITE	30	PIPE AIR INLET	21	TER WIR	32
LABEL MODEL DESIGNATION	30	PIPE CAC	22	TERMINAL	36
LABEL NEUTRAL GROUNDED	30	PLATE	36, 28, 38, 46, 47, 53	TERMINAL BLOCK	36
LABEL OIL FILL TYPE	30	PLATE ACCESS CUBICLE	36	TERMINAL BOARD	36
LABEL OPERATING INSTRUCTION	30	PLATE ASSEMBLY	28, 53	TERMINAL END STOP	36
LABEL QAS RELAY FUNCT.	30	PLATE CONTROL PANEL	36	TIE DOWN HERE DECAL	54
LABEL QC1001 OPERATING	30	PLATE DOOR INLET	46, 47	TIRE & LOADING INFORMATION LABEL	54
LABEL QC1002 OPERATING INST	30	PLATE LIFTING SUPPORT	28	TIRE LABEL UV OVERLAY	54
LABEL SELECTOR SW POSITION	30	PLUG	35	TOW LEVEL DECAL	54
LABEL SELECTOR SW VOLTAGES	30	PLUG FLANGED INLET	19	TOWING EYE	54
LABEL SHEET	30	POTMETER	36	TRAILER ASSEMBLY	54, 55
LABEL WARNING	30	POWER DISTRIBUTION BLOCK	36	TRAILER LABEL PLACEMENT	54
LABEL WARNING ALTERNATOR	30	PROTECTION	36	TRILER W.A.	54
LABELS	30, 31	Q		TRANSFORMER	36
LICENSE PLATE LAMP	54	QUICK COUPLING	34	TUBE	35
LIFTING BEAM	28			TUBE FUEL INLET/OUTLET	34
LIFTING SUPPORT	28	R			
LIGHT	36	RAIL DIN MOUNTING	36	V	
LOCK	36	RAIN CAP	26, 28	VALVE	34
M		REAR ROOF ASSEMBLY	28, 50	V-BAND CLAMP	26
MANIFOLD	38	RECEPTACLE	36	VIBRATION MOUNT	36
MANIFOLD SHIELD	26	RELAY	36, 24	VIN LABEL	54
MUD FLAP	54	RELAY BASE	36	VOLTAGE SELECT	20
MUFFLER	26	RUBBER BUFFER	18	VOLTMETER	36
O		S		W	
OIL FILTER	14, 15	SADDLE CLAMP	26	WIRE HARNESS	24
OUTLET BAFFLE	44	SAFETY CHAIN	54	WIRE SET	20
		SAFETY CHAIN ANCHOR	54		
		SELECTOR SWITCH	36, 20		
		SERVICE PAK	14, 15		

INSTRUCTION MANUAL

Warranty and Liability Limitation

Use only authorized parts.

Any damage or malfunction caused by the use of unauthorized parts is not covered by Warranty or Product Liability.

The manufacturer does not accept any liability for any damage arising for modifications, additions or conversions made without the manufacturer's approval in writing.

Copyright 2012, Atlas Copco Compressors LLC, RockHill SC USA.

Any unauthorized use or copying of the contents or any part thereof is prohibited.

This applies in particular to trademarks, model denominations, part numbers and drawings

Limitation de garantie et de responsabilité

Utiliser uniquement les pièces homologuées.

Tout dommage ou mauvais fonctionnement dû à l'utilisation de pièces non homologuées n'est pas couvert par la garantie ou la responsabilité des produits défectueux.

Le fabricant décline toute responsabilité en cas de dommage faisant suite à des modifications, des ajouts ou des conversions effectués sans l'accord écrit du fabricant.

Copyright 2012, Atlas Copco Compressors LLC, RockHill SC USA.

Toute utilisation ou copie du contenu, ou d'une partie de celui-ci, non autorisée est interdite.

Cette interdiction s'applique en particulier aux marques de commerce, aux dénominations des modèles, aux numéros des pièces et aux schémas.

Limitación de garantía y responsabilidad

Use sólo piezas autorizadas.

La garantía o responsabilidad del producto no cubre ningún daño o funcionamiento defectuoso provocado por el uso de piezas no autorizadas.

El fabricante no acepta ninguna responsabilidad por los daños provocados por modificaciones, adiciones o conver-

siones realizadas sin la aprobación por escrito del fabricante.

Derechos de reproducción 2012, Atlas Copco Compressors LLC, RockHill SC USA.

Está prohibida toda utilización o reproducción total o parcial no autorizada de estos contenidos, en especial de las marcas registradas, denominaciones de modelos, números de piezas y planos

ORDERING SPARE PARTS

ORDERING SPARE PARTS

Always quote the part number, the designation and the quantity of the parts required, as well as the type and the serial number of the machine.

EXPLANATION OF THE COLUMNS

REF : REFERENCE CODE

Establishes the connection between a part in the list and a part in the illustration.

"—" means that the part is not shown in the illustration.

PART NUMBER

If no part number is given, the part cannot be obtained as a spare part.

Parts marked with a dot are part of the assembly listed right above them.

DESIGNATION

Usually this is the name of the part. For standard parts, in addition to the name, a number of characteristics are given.

QTY : QUANTITY

Indicates the quantity of the part concerned. "AR" stands for "As Required".

COMMANDE DE PIÈCES DETACHEES

Toujours indiquer le numéro de pièce, la désignation, la quantité désirée ainsi que le type et le numéro de série du groupe.

EXPLICATION DES INTITULES DES COLONNES

REF : CODE DE REFERENCE

Réfère à la pièce détachée spécifiée dans la liste et sur l'illustration. "—" implique que la pièce n'est pas indiquée sur l'illustration.

PART NUMBER : NUMERO DE PIECE DETACHEE

Si le numéro n'est pas indiqué, la pièce n'est pas disponible en tant que pièce de rechange.

Les pièces indiquées par un point gras font partie de l'ensemble se trouvant au-dessus des pièces détachées correspondantes.

DESIGNATION

En général, le nom de la pièce. S'il s'agit de pièces standard, outre la désignation, un certain nombre de caractéristiques sont indiquées.

QTY : QUANTITE

Indique la quantité de la pièce détachée. "AR" indique "As required", c'est-à-dire la quantité à déterminer selon le cas.

PEDIDO DE PARTES

Siempre comunicar el número de parte, la designación y la cantidad deseada así como el tipo y el número de serie de la máquina.

INFORMACIONES SOBRE LAS COLUMNAS

REF : CODIGO DE REFERENCIA

Establece la conexión entre una parte en la lista y una parte en la ilustración.

"—" quiere decir que la parte no está ilustrada.

PART NUMBER : NUMERO DE PARTE

Si no se da ningún número, quiere decir que la parte no está disponible como parte de recambio.

Partes marcadas con un punto son partes del conjunto indicado más arriba.

DESIGNATION : DESIGNACION

Principalmente el nombre de la parte. En caso de partes estándares, el nombre es seguido por especificaciones.

QTY : CANTIDAD

Indica la cantidad de la parte correspondiente. La indicación "AR" significa "As Required" (como sea requerido).

SAFETY PRECAUTIONS FOR PORTABLE GENERATORS

To be read attentively and acted accordingly before towing, lifting, operating, performing maintenance or repairing the generator

0.1 INTRODUCTION

The policy of Atlas Copco is to provide the users of their equipment with safe, reliable and efficient products. Factors taken into account are among others:

- the intended and predictable future use of the products, and the environments in which they are expected to operate,
- applicable rules, codes and regulations,
- the expected useful product life, assuming proper service and maintenance,
- providing the manual with up-to-date information.

Before handling any product, take time to read the relevant instruction manual. Besides giving detailed operating instructions, it also gives specific information about safety, preventive maintenance, etc.

Keep the manual always at the unit location, easy accessible to the operating personnel.

See also the safety precautions of the engine and possible other equipment, which are separately sent along or are mentioned on the equipment or parts of the unit.

These safety precautions are general and some statements will therefore not always apply to a particular unit.

Only people that have the right skills should be allowed to operate, adjust, perform maintenance or repair on Atlas Copco equipment. It is the responsibility of management to appoint operators with the appropriate training and skill for each category of job.

Skill level 1: Operator

An operator is trained in all aspects of operating the unit with the push-buttons, and is trained to know the safety aspects.

Skill level 2: Mechanical technician

A mechanical technician is trained to operate the unit the same as the operator. In addition, the mechanical technician is also trained to perform maintenance and repair, as described in the instruction manual, and is allowed to change settings of the control and safety system. A mechanical technician does not work on live electrical components.

Skill level 3: Electrical technician

An electrical technician is trained and has the same

qualifications as both the operator and the mechanical technician. In addition, the electrical technician may carry out

electrical repairs within the various enclosures of the unit. This includes work on live electrical components.

Skill level 4: Specialist from the manufacturer

This is a skilled specialist sent by the manufacturer or its agent to perform complex repairs or modifications to the equipment.

In general it is recommended that not more than two people operate the unit, more operators could lead to unsafe operating conditions. Take necessary steps to keep unauthorized persons away from the unit and eliminate all possible sources of danger at the unit.

When handling, operating, overhauling and/or performing maintenance or repair on Atlas Copco equipment, the mechanics are expected to use safe engineering practices and to observe all relevant local safety requirements and ordinances. The following list is a reminder of special safety directives and precautions mainly applicable to Atlas Copco equipment.

Neglecting the safety precautions may endanger people as well as environment and machinery:

- endanger people due to electrical, mechanical or chemical influences,
- endanger the environment due to leakage of oil, solvents or other substances,
- endanger the machinery due to function failures.

All responsibility for any damage or injury resulting from neglecting these precautions or by non-observance of ordinary caution and due care required in handling, operating, maintenance or repair, also if not expressly mentioned in this instruction manual, is disclaimed by Atlas Copco.

The manufacturer does not accept any liability for any damage arising from the use of non-original parts and for modifications, additions or conversions made without the manufacturer's approval in writing.

If any statement in this manual does not comply with local legislation, the stricter of the two shall be applied.

Statements in these safety precautions should not be interpreted as suggestions, recommendations or inducements that it should be used in violation of any

applicable laws or regulations.

0.2 GENERAL SAFETY PRECAUTIONS

- 1 The owner is responsible for maintaining the unit in a safe operating condition. Unit parts and accessories must be replaced if missing or unsuitable for safe operation.
- 2 The supervisor, or the responsible person, shall at all times make sure that all instructions regarding machinery and equipment operation and maintenance are strictly followed and that the machines with all accessories and safety devices, as well as the consuming devices, are in good repair, free of abnormal wear or abuse, and are not tampered with.
- 3 Whenever there is an indication or any suspicion that an internal part of a machine is overheated, the machine shall be stopped but no inspection covers shall be opened before sufficient cooling time has elapsed; this to avoid the risk of spontaneous ignition of oil vapour when air is admitted.
- 4 Normal ratings (pressures, temperatures, speeds, etc.) shall be durably marked.
- 5 Operate the unit only for the intended purpose and within its rated limits (pressure, temperature, speeds, etc.).
- 6 The machinery and equipment shall be kept clean, i.e. as free as possible from oil, dust or other deposits.
- 7 To prevent an increase in working temperature, inspect and clean heat transfer surfaces (cooler fins, intercoolers, water jackets, etc.) regularly. See the maintenance schedule.
- 8 All regulating and safety devices shall be maintained with due care to ensure that they function properly. They may not be put out of action.
- 9 Pressure and temperature gauges shall be checked regularly with regard to their accuracy. They shall be replaced whenever outside acceptable tolerances.
- 10 Safety devices shall be tested as described in the maintenance schedule of the instruction manual to determine that they are in good operating condition.
- 11 Mind the markings and information labels on the unit.
- 12 In the event the safety labels are damaged or destroyed, they must be replaced to ensure operator safety.

- 13 Keep the work area neat. Lack of order will increase the risk of accidents.
- 14 When working on the unit, wear safety clothing. Depending on the kind of activities these are: safety glasses, ear protection, safety helmet (including visor), safety gloves, protective clothing, safety shoes. Do not wear the hair long and loose (protect long hair with a hairnet), or wear loose clothing or jewelry.
- 15 Take precautions against fire. Handle fuel, oil and anti-freeze with care because they are inflammable substances. Do not smoke or approach with naked flame when handling such substances. Keep a fire-extinguisher in the vicinity.
- 16a **Portable generators (with earthing pin):**
Earth the generator as well as the load properly.
- 16b **Portable generators IT:**
Note: This generator is built to supply a sheer alternating current IT network.
Earth the load properly.

0.3 SAFETY DURING TRANSPORT AND INSTALLATION

To lift a unit, all loose or pivoting parts, e.g. doors and towbar, shall first be securely fastened.

Do not attach cables, chains or ropes directly to the lifting eye; apply a crane hook or lifting shackle meeting local safety regulations. Never allow sharp bends in lifting cables, chains or ropes.

Helicopter lifting is not allowed.

It is strictly forbidden to dwell or stay in the risk zone under a lifted load. Never lift the unit over people or residential areas. Lifting acceleration and retardation shall be kept within safe limits.

- 1 Before towing the unit:
 - check the towbar, the brake system and the towing eye. Also check the coupling of the towing vehicle,
 - check the towing and brake capability of the towing vehicle,
 - check that the towbar, jockey wheel or stand leg is safely locked in the raised position,
 - ascertain that the towing eye can swivel freely on the hook,
 - check that the wheels are secure and that the tyres are in good condition and inflated correctly,
 - connect the signalisation cable, check all lights and connect the pneumatic brake couplers,
 - attach the safety break-away cable or safety chain to the towing vehicle,
 - remove wheel chocks, if applied, and disengage the parking brake.
- 2 To tow a unit use a towing vehicle of ample capacity. Refer to the documentation of the towing vehicle.
- 3 If the unit is to be backed up by the towing vehicle, disengage the overrun brake mechanism (if it is not an automatic mechanism).
- 4 Never exceed the maximum towing speed of the unit (mind the local regulations).
- 5 Place the unit on level ground and apply the parking brake before disconnecting the unit from the towing vehicle. Unclip the safety break-away cable or safety chain. If the unit has no parking brake or jockey wheel, immobilize the unit by placing chocks in front of and/or behind the wheels. When the towbar can be positioned vertically, the locking device must be applied and kept

in good order.

- 6 To lift heavy parts, a hoist of ample capacity, tested and approved according to local safety regulations, shall be used.
- 7 Lifting hooks, eyes, shackles, etc., shall never be bent and shall only have stress in line with their design load axis. The capacity of a lifting device diminishes when the lifting force is applied at an angle to its load axis.
- 8 For maximum safety and efficiency of the lifting apparatus all lifting members shall be applied as near to perpendicular as possible. If required, a lifting beam shall be applied between hoist and load.
- 9 Never leave a load hanging on a hoist.
- 10 A hoist has to be installed in such a way that the object will be lifted perpendicular. If that is not possible, the necessary precautions must be taken to prevent load-swinging, e.g. by using two hoists, each at approximately the same angle not exceeding 30° from the vertical.
- 11 Locate the unit away from walls. Take all precautions to ensure that hot air exhausted from the engine and driven machine cooling systems cannot be recirculated. If such hot air is taken in by the engine or driven machine cooling fan, this may cause overheating of the unit; if taken in for combustion, the engine power will be reduced.
- 12 Generators shall be stalled on an even, solid floor, in a clean location with sufficient ventilation. If the floor is not level or can vary in inclination, consult Atlas Copco.
- 13 The electrical connections shall correspond to local codes. The machines shall be earthed and protected against short circuits by fuses or circuit breakers.
- 14 Never connect the generator outlets to an installation which is also connected to a public mains.
- 15 Before connecting a load, switch off the corresponding circuit breaker, and check whether frequency, voltage, current and power factor comply with the ratings of the generator.

0.4 SAFETY DURING USE AND OPERATION

- 1 When the unit has to operate in a fire-hazardous environment, each engine exhaust has to be provided with a spark arrestor to trap incendiary sparks.
- 2 The exhaust contains carbon monoxide which is a lethal gas. When the unit is used in a confined space, conduct the engine exhaust to the outside atmosphere by a pipe of sufficient diameter; do this in such a way that no extra back pressure is created for the engine. If necessary, install an extractor. Observe any existing local regulations. Make sure that the unit has sufficient air intake for operation. If necessary, install extra air intake ducts.
- 3 When operating in a dust-laden atmosphere, place the unit so that dust is not carried towards it by the wind. Operation in clean surroundings considerably extends the intervals for cleaning the air intake filters and the cores of the coolers.
- 4 Never remove a filler cap of the cooling water system of a hot engine. Wait until the engine has sufficiently cooled down.
- 5 Never refill fuel while the unit is running, unless otherwise stated in the Atlas Copco Instruction Book (AIB). Keep fuel away from hot parts such as air outlet pipes or the engine exhaust. Do not smoke when fuelling. When fuelling from an automatic pump, an earthing cable should be connected to the unit to discharge static electricity. Never spill nor leave oil, fuel, coolant or cleansing agent in or around the unit.
- 6 All doors shall be shut during operation so as not to disturb the cooling air flow inside the bodywork and/or render the silencing less effective. A door should be kept open for a short period only e.g. for inspection or adjustment.
- 7 Periodically carry out maintenance works according to the maintenance schedule.
- 8 Stationary housing guards are provided on all rotating or reciprocating parts not otherwise protected and which may be hazardous to personnel. Machinery shall never be put into operation, when such guards have been removed, before the guards are securely reinstalled.
- 9 Noise, even at reasonable levels, can cause irritation and disturbance which, over a long period of time, may cause severe injuries to the nervous system of human beings.
When the sound pressure level, at any point where

personnel normally has to attend, is:

- below 70 dB(A):no action needs to be taken,
 - above 70 dB(A):noise-protective devices should be provided for people continuously being present in the room,
 - below 85 dB(A):no action needs to be taken for occasional visitors staying a limited time only,
 - above 85 dB(A):room to be classified as a noise-hazardous area and an obvious warning shall be placed permanently at each entrance to alert people entering the room, for even relatively short times, about the need to wear ear protectors,
 - above 95 dB(A):the warning(s) at the entrance(s) shall be completed with the recommendation that also occasional visitors shall wear ear protectors,
 - above 105 dB(A):special ear protectors that are adequate for this noise level and the spectral composition of the noise shall be provided and a special warning to that effect shall be placed at each entrance.
- 10 Insulation or safety guards of parts the temperature of which can be in excess of 80 °C (175 °F) and which may be accidentally touched by personnel shall not be removed before the parts have cooled to room temperature.
 - 11 Never operate the unit in surroundings where there is a possibility of taking in flammable or toxic fumes.
 - 12 If the working process produces fumes, dust or vibration hazards, etc., take the necessary steps to eliminate the risk of personnel injury.
 - 13 When using compressed air or inert gas to clean down equipment, do so with caution and use the appropriate protection, at least safety glasses, for the operator as well as for any bystander. Do not apply compressed air or inert gas to your skin or direct an air or gas stream at people. Never use it to clean dirt from your clothes.
 - 14 When washing parts in or with a cleaning solvent, provide the required ventilation and use appropriate protection such as a breathing filter, safety glasses, rubber apron and gloves, etc.
 - 15 Safety shoes should be compulsory in any workshop and if there is a risk, however small, of falling objects, wearing of a safety helmet should be included.
 - 16 If there is a risk of inhaling hazardous gases, fumes or dust, the respiratory organs must be protected and depending on the nature of the hazard, so must the eyes and skin.
 - 17 Remember that where there is visible dust, the finer,

invisible particles will almost certainly be present too; but the fact that no dust can be seen is not a reliable indication that dangerous, invisible dust is not present in the air.

- 18 Never operate the generator in excess of its limits as indicated in the technical specifications and avoid long no-load sequences.
- 19 Never operate the generator in a humid atmosphere. Excessive moisture causes worsening of the generator insulation.
- 20 Do not open electrical cabinets, cubicles or other equipment while voltage is supplied. If such cannot be avoided, e.g. for measurements, tests or adjustments, have the action carried out by a qualified electrician only, with appropriate tools, and ascertain that the required bodily protection against electrical hazards is applied.
- 21 Never touch the power terminals during operation of the machine.
- 22 Whenever an abnormal condition arises, e.g. excessive vibration, noise, odour, etc., switch the circuit breakers to OFF and stop the engine. Correct the faulty condition before restarting.
- 23 Check the electric cables regularly. Damaged cables and insufficient lightening of connections may cause electric shocks. Whenever damaged wires or dangerous conditions are observed, switch the circuit breakers to OFF and stop the engine. Replace the damaged wires or correct the dangerous condition before restarting. Make sure that all electric connections are securely tightened.
- 24 Avoid overloading the generator. The generator is provided with circuit breakers for overload protection. When a breaker has tripped, reduce the concerned load before restarting.
- 25 If the generator is used as stand-by for the mains supply, it must not be operated without control system which automatically disconnects the generator from the mains when the mains supply is restored.
- 26 Never remove the cover of the output terminals during operation. Before connecting or disconnecting wires, switch off the load and the circuit breakers, stop the machine and make sure that the machine cannot be started inadvertently or there is any residual voltage on the power circuit.
- 27 Running the generator at low load for long periods will reduce the lifetime of the engine.

0.5 SAFETY DURING MAINTENANCE AND REPAIR

Maintenance, overhaul and repair work shall only be carried out by adequately trained personnel; if required, under supervision of someone qualified for the job.

- 1 Use only the correct tools for maintenance and repair work, and only tools which are in good condition.
- 2 Parts shall only be replaced by genuine Atlas Copco replacement parts.
- 3 All maintenance work, other than routine attention, shall only be undertaken when the unit is stopped. Steps shall be taken to prevent inadvertent starting. In addition, a warning sign bearing a legend such as "work in progress; do not start" shall be attached to the starting equipment.
On engine-driven units the battery shall be disconnected and removed or the terminals covered by insulating caps.
On electrically driven units the main switch shall be locked in open position and the fuses shall be taken out. A warning sign bearing a legend such as "work in progress; do not supply voltage" shall be attached to the fuse box or main switch.
- 4 Prior to stripping an engine or other machine or undertaking major overhaul on it, prevent all movable parts from rolling over or moving.
- 5 Make sure that no tools, loose parts or rags are left in or on the machine. Never leave rags or loose clothing near the engine air intake.
- 6 Never use flammable solvents for cleaning (fire-risk).
- 7 Take safety precautions against toxic vapours of cleaning liquids.
- 8 Never use machine parts as a climbing aid.
- 9 Observe scrupulous cleanliness during maintenance and repair. Keep away dirt, cover the parts and exposed openings with a clean cloth, paper or tape.
- 10 Never weld on or perform any operation involving heat near the fuel or oil systems. Fuel and oil tanks must be completely purged, e.g. by steam-cleaning, before carrying out such operations. Never weld on, or in any way modify, pressure vessels. Disconnect the alternator cables during arc welding on the unit.
- 11 Support the towbar and the axle(s) securely if working underneath the unit or when removing a wheel. Do not

rely on jacks.

- 12 Do not remove any of, or tamper with, the sound-damping material. Keep the material free of dirt and liquids such as fuel, oil and cleansing agents. If any sound-damping material is damaged, replace it to prevent the sound pressure level from increasing.
- 13 Use only lubricating oils and greases recommended or approved by Atlas Copco or the machine manufacturer. Ascertain that the selected lubricants comply with all applicable safety regulations, especially with regard to explosion or fire-risk and the possibility of decomposition or generation of hazardous gases. Never mix synthetic with mineral oil.
- 14 Protect the engine, alternator, air intake filter, electrical and regulating components, etc., to prevent moisture ingress, e.g. when steam-cleaning.
- 15 When performing any operation involving heat, flames or sparks on a machine, the surrounding components shall first be screened with non-flammable material.
- 16 Never use a light source with open flame for inspecting the interior of a machine.
- 17 When repair has been completed, the machine shall be barred over at least one revolution for reciprocating machines, several revolutions for rotary ones to ensure that there is no mechanical interference within the machine or driver. Check the direction of rotation of electric motors when starting up the machine initially and after any alteration to the electrical connection(s) or switch gear, to check that the oil pump and the fan function properly.
- 18 Maintenance and repair work should be recorded in an operator's logbook for all machinery. Frequency and nature of repairs can reveal unsafe conditions.
- 19 When hot parts have to be handled, e.g. shrink fitting, special heat-resistant gloves shall be used and, if required, other body protection shall be applied.
- 20 When using cartridge type breathing filter equipment, ascertain that the correct type of cartridge is used and that its useful service life is not surpassed.
- 21 Make sure that oil, solvents and other substances likely to pollute the environment are properly disposed of.
- 22 Before clearing the generator for use after maintenance or overhaul, submit it to a testrun, check that the AC power performance is correct and that the control and shutdown devices function correctly.

0.6 TOOL APPLICATIONS SAFETY

Apply the proper tool for each job. With the knowledge of correct tool use and knowing the limitations of tools, along with some common sense, many accidents can be prevented.

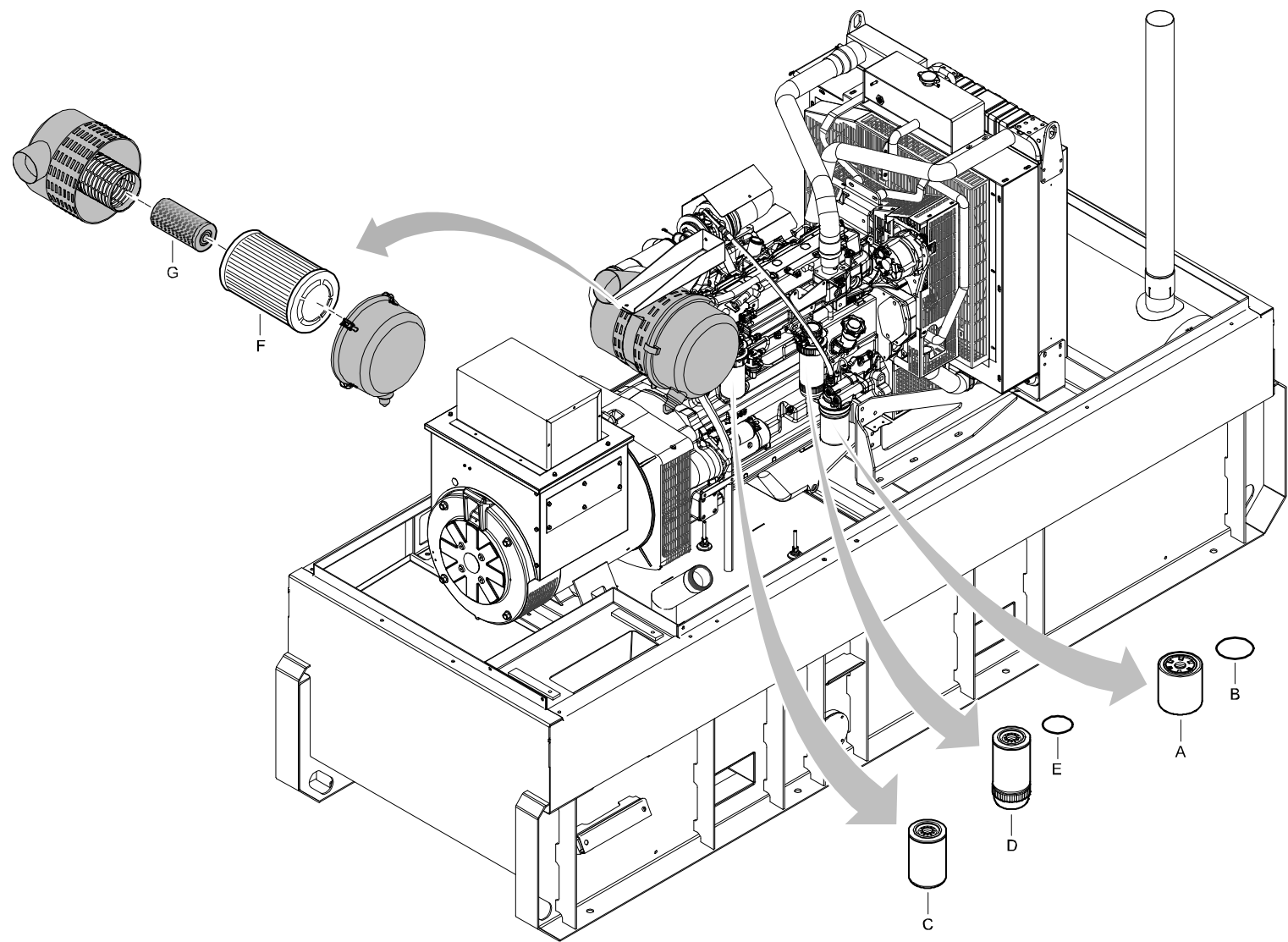
Special service tools are available for specific jobs and should be used when recommended. The use of these tools will save time and prevent damage to parts.

0.7 SPECIFIC SAFETY PRECAUTIONS

Batteries

When servicing batteries, always wear protecting clothing and glasses.

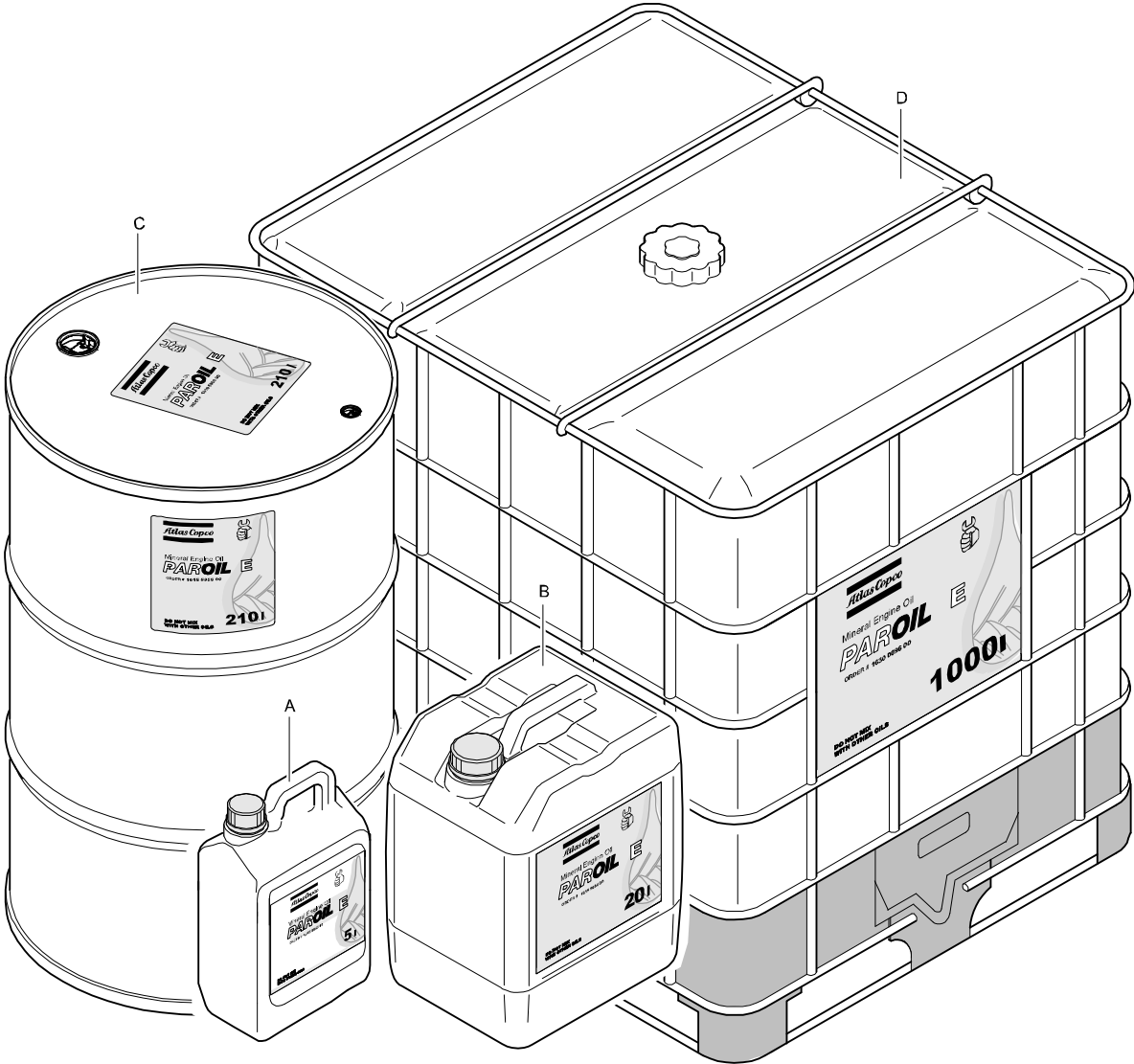
- 1 The electrolyte in batteries is a sulphuric acid solution which is fatal if it hits your eyes, and which can cause burns if it contacts your skin. Therefore, be careful when handling batteries, e.g. when checking the charge condition.
- 2 Install a sign prohibiting fire, open flame and smoking at the post where batteries are being charged.
- 3 When batteries are being charged, an explosive gas mixture forms in the cells and might escape through the vent holes in the plugs.
Thus an explosive atmosphere may form around the battery if ventilation is poor, and can remain in and around the battery for several hours after it has been charged. Therefore:
 - never smoke near batteries being, or having recently been, charged,
 - never break live circuits at battery terminals, because a spark usually occurs.
- 4 When connecting an auxiliary battery (AB) in parallel to the unit battery (CB) with booster cables: connect the + pole of AB to the + pole of CB, then connect the - pole of CB to the mass of the unit. Disconnect in the reverse order.



SERVICE PAK

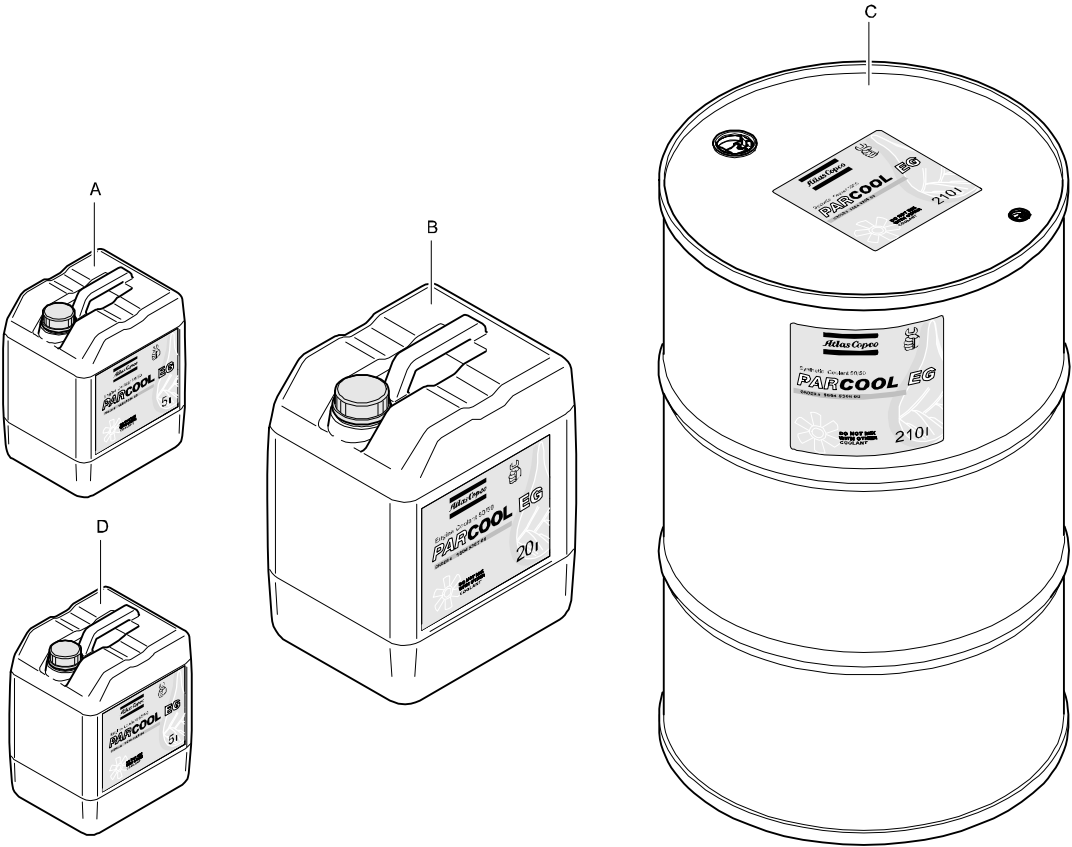
REF	PART NUMBER	DESIGNATION	QTY	REF	PART NUMBER	DESIGNATION	QTY	REF	PART NUMBER	DESIGNATION	QTY
-	2912 6375 04	SERVICE PAK 250H									
•A	-	OIL FILTER	1								
•B	-	OIL FILTER SEAL	1								
-	2912 6376 05	SERVICE PAK 500H									
•A	-	OIL FILTER	1								
•B	-	OIL FILTER SEAL	1								
•C	-	FUEL FILTER	1								
•D	-	PRIMARY FUEL FILTER	1								
•E	-	FUEL FILTER SEAL	1								
•F	-	AIRFILTER ELEMENT	1								
•G	-	SAFETY CARTRIDGE	1								

ENGINE OIL - PAROIL E



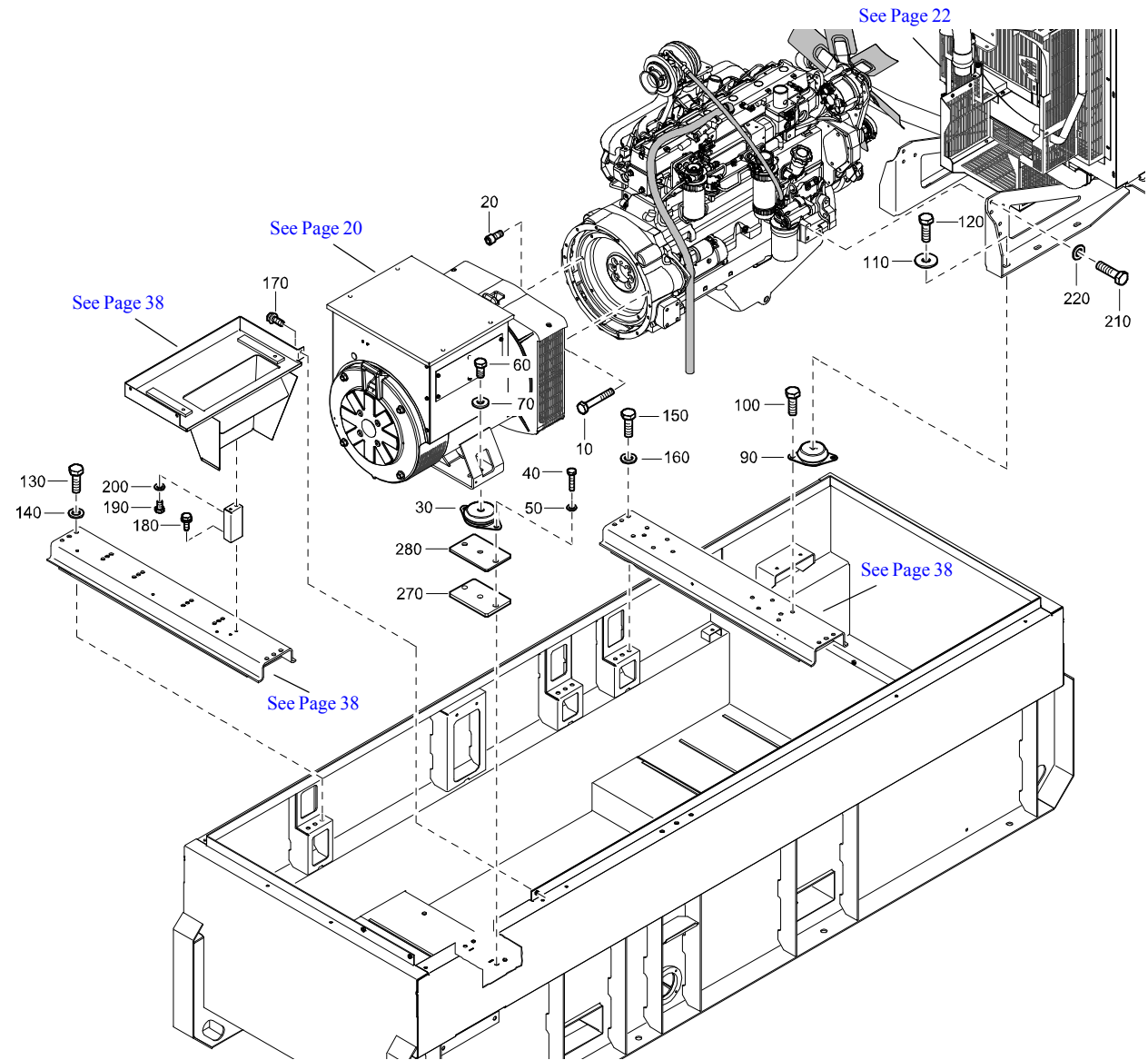
REF	PART NUMBER	DESIGNATION	QTY
A	1615 5953 00	OIL CAN 5 L	1
B	1615 5954 00	OIL CAN 20 L	1
C	1615 5955 00	STEEL DRUM 209 L	1
D	1630 0096 00	CONTAINER 1000 L	1

ENGINE COOLANT - PARCOOL EG



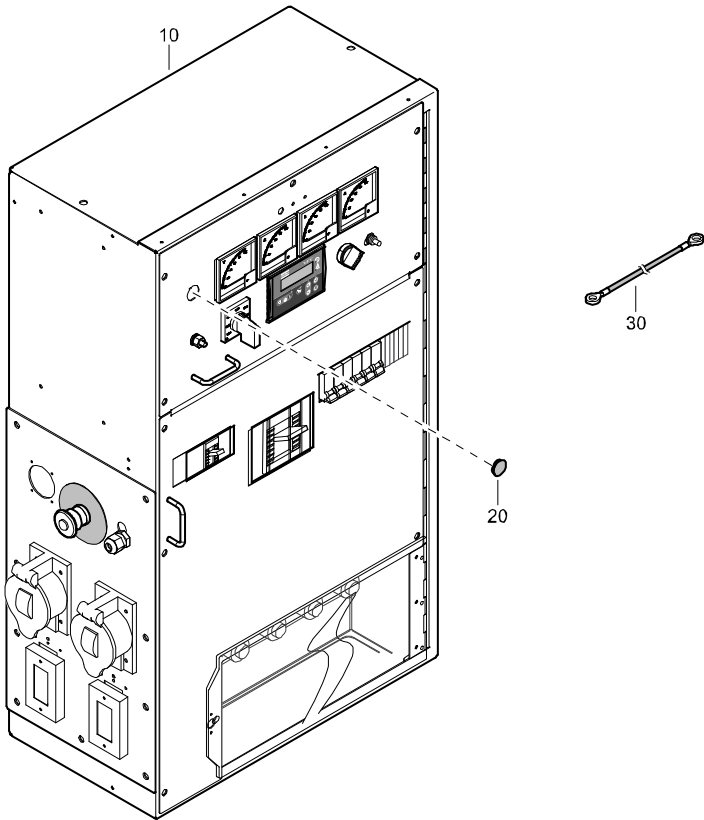
REF	PART NUMBER	DESIGNATION	QTY
A	1604 5308 00	1.3 - GALLON (5 LITER) CONTAINER	1
B	1604 5307 01	5.3 - GALLON (20 LITER) PAIL	1
C	1604 5306 00	55 GALLON (209 LITER) DRUM	1
D	1604 8159 00	CONCENTRATE 5 LITER CAN	1

FRAME AND MOUNTS - STANDARD



REF	PART NUMBER	DESIGNATION	QTY
10	0147 1368 03	HEX HEAD SCREW	12
20	0211 5162 06	SOCK HEAD SCREW	8
30	1615 5509 00	RUBBER BUFFER	2
40	0147 1404 15	HEX HEAD SCREW	4
50	0301 2358 00	FLAT WASHER	4
60	0147 1401 03	HEX HEAD SCREW	6
70	0301 2358 00	FLAT WASHER	6
90	1626 0440 00	VIBRATION MOUNT	2
100	0147 1401 03	HEX HEAD SCREW	4
110	0302 1274 02	FLAT WASHER	2
120	0147 1401 03	HEX HEAD SCREW	2
130	0147 1400 03	HEX HEAD SCREW	6
140	0301 2358 00	FLAT WASHER	6
150	0147 1401 03	HEX HEAD SCREW	6
160	0301 2358 00	FLAT WASHER	6
170	1619 2766 00	SCRAPPER BOLT	3
180	1619 2766 00	SCRAPPER BOLT	2
190	0147 1320 03	HEX HEAD SCREW	2
200	0301 2335 00	FLAT WASHER	2
210	0147 1403 03	HEX HEAD SCREW	6
220	0301 2358 00	FLAT WASHER	6
270	1310 6000 77	PLATE	1
280	1310 6000 78	PLATE	1

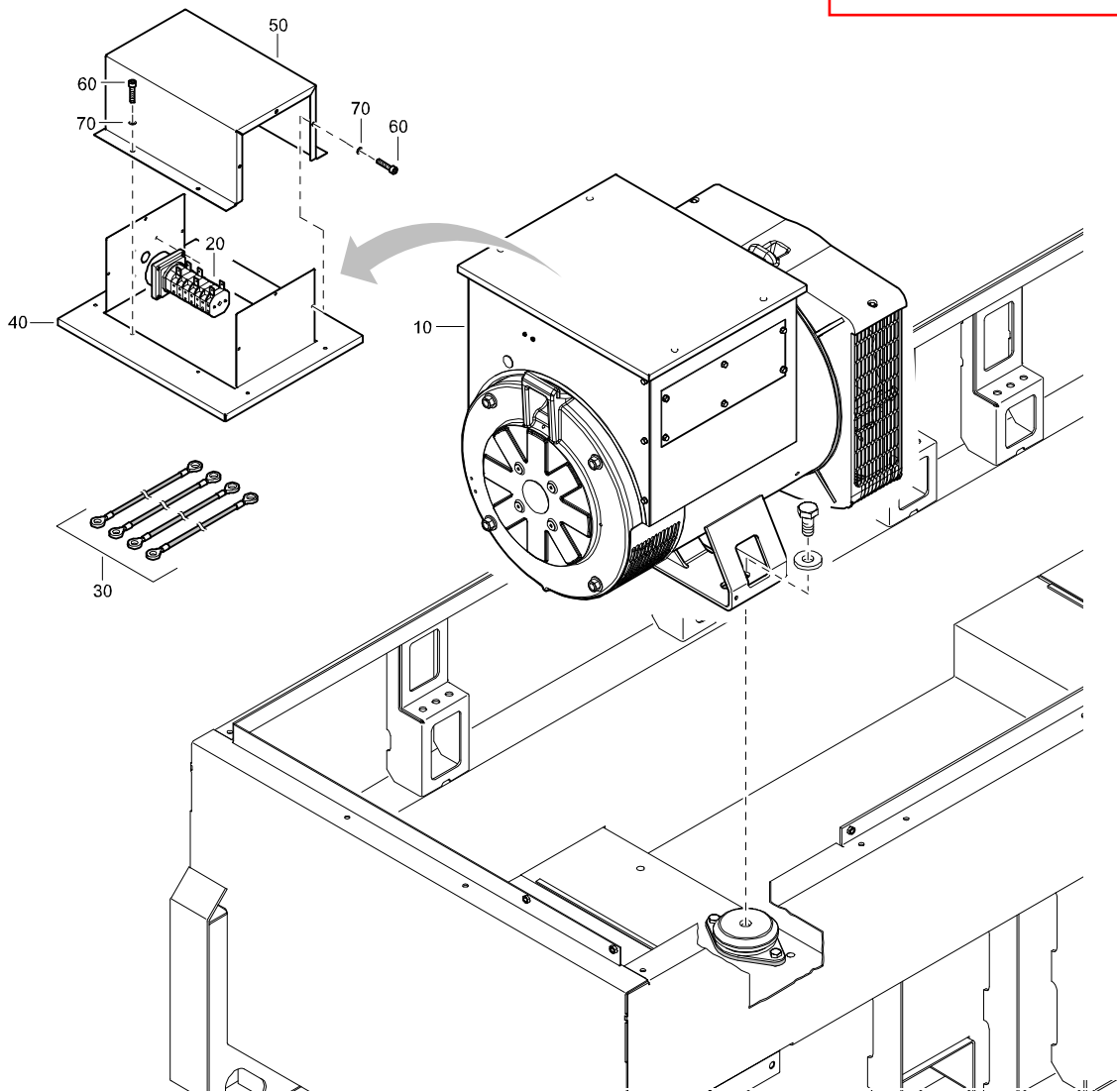
CUBICLE ASSEMBLY - STANDARD



REF	PART NUMBER	DESIGNATION	QTY
10	1310 4992 80	CUBICLE ASSY (For details see page 36)	1
20	1310 0351 77	PLUG FLANGED INLET	1
30	1310 2509 12	CABLE	8

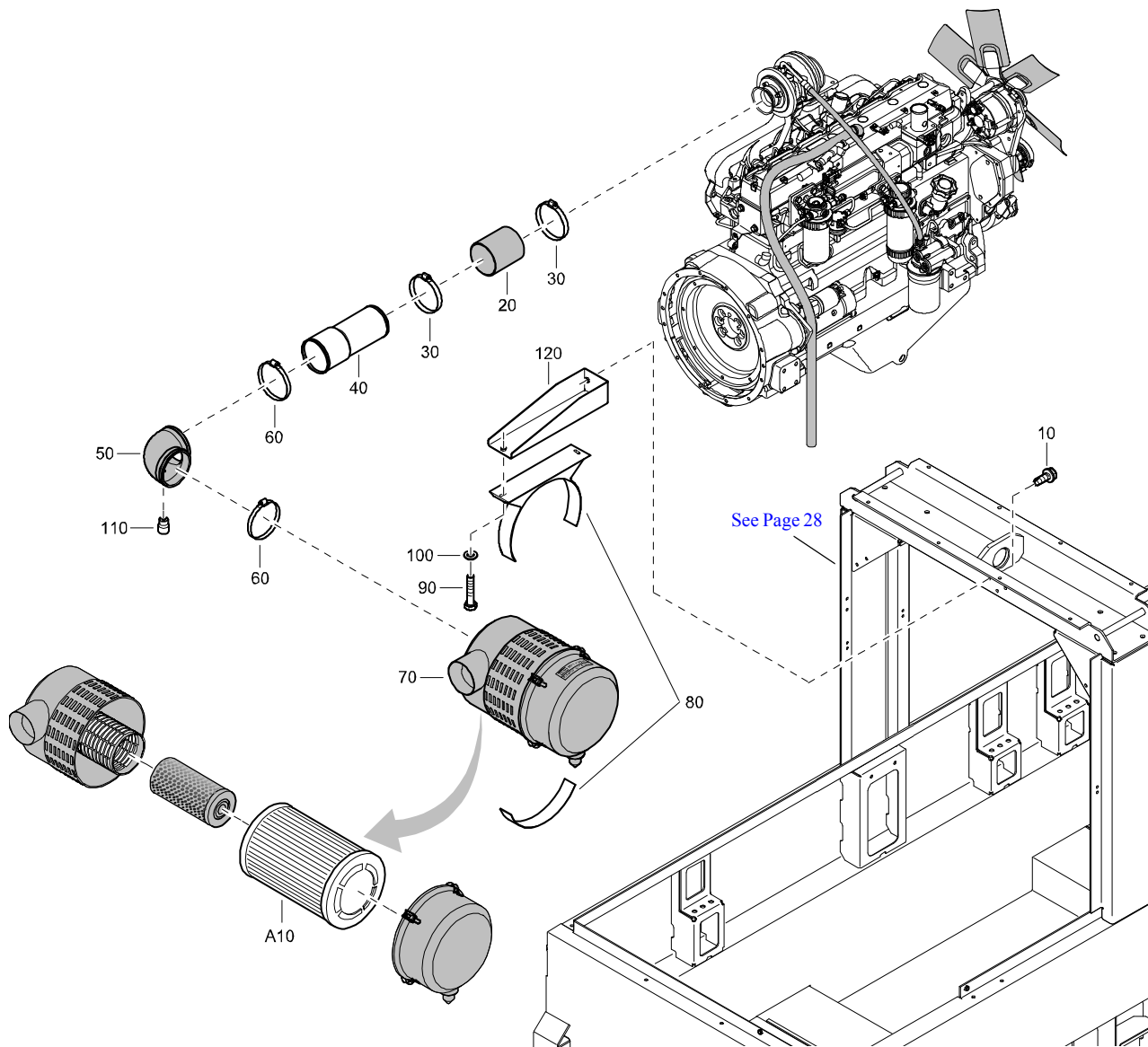
ALTERNATOR ASSEMBLY - STANDARD

AREP Alt - 1310606625



REF	PART NUMBER	DESIGNATION	QTY
10	1310 6066 10	ALTERNATOR	1
20	1089 9082 36	SELECTOR SWITCH	1
30	1310 6461 00	WIRE SET	1
40	1310 6289 00	VOLTAGE SELECT SWITCH HOUSING	1
50	1310 6290 00	VOLTAGE SELECT SWITCH COVER	1
60	0211 1957 42	SOCK HEAD SCREW	10
70	0301 2318 00	FLAT WASHER	10

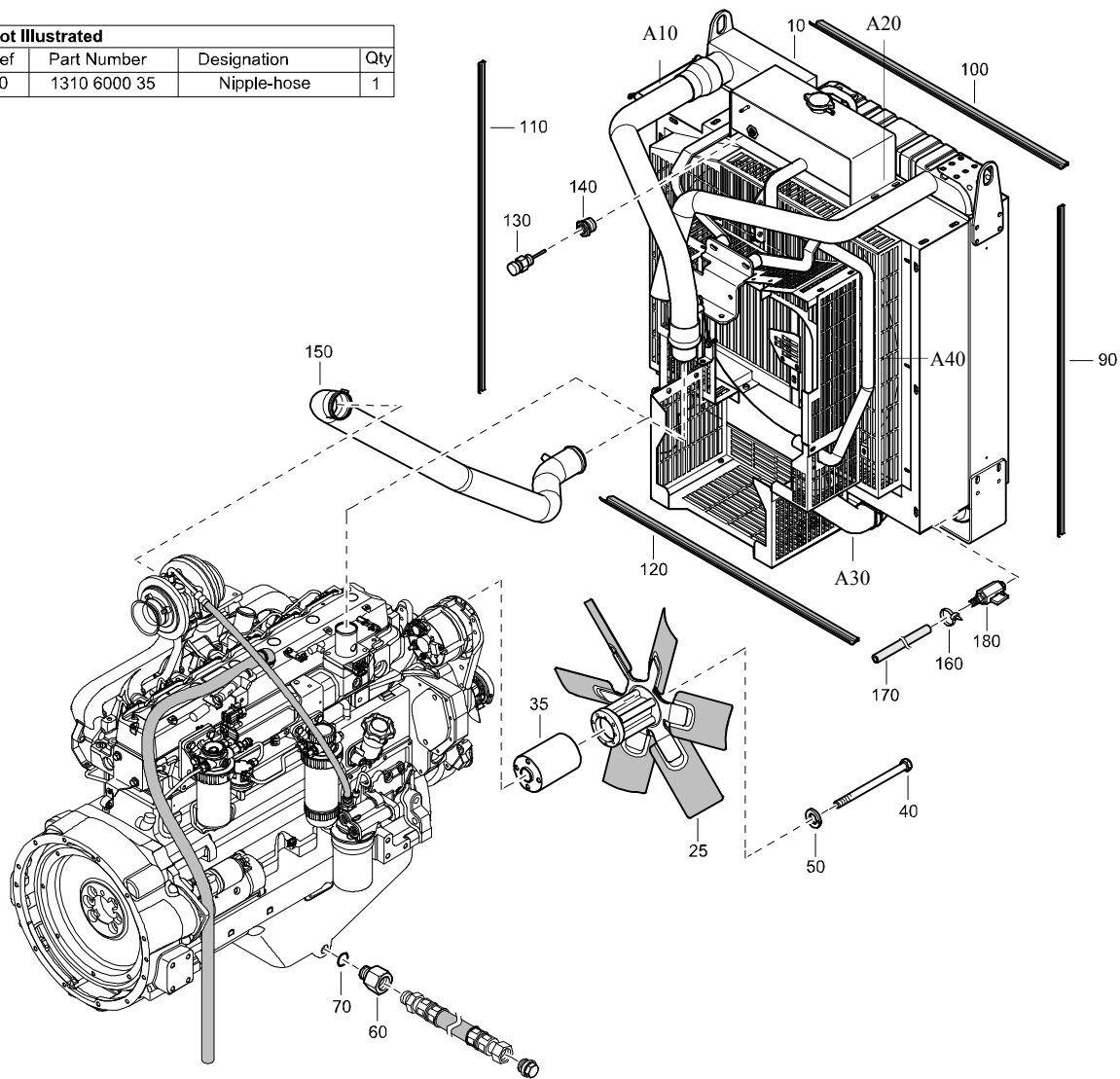
AIR INLET - STANDARD



REF	PART NUMBER	DESIGNATION	QTY
10	1619 2766 00	SCRAPPER BOLT	3
20	1604 0145 00	HOSE SLEEVE	1
30	0347 6100 23	HOSE CLAMP	2
40	1310 4991 00	PIPE AIR INLET	1
50	1626 1798 00	ELBOW	1
60	0347 6115 00	HOSE CLAMP	2
70	1615 9388 01	AIR FILTER	1
•A10	1613 8004 00	AIR FILTER ELEMENT	1
80	1613 8005 00	BRACKET AIR FILTER	1
90	0147 1328 03	HEX HEAD SCREW	2
100	0301 2335 00	FLAT WASHER	2
110	1310 0355 53	GAUGE AIR CLEANER	1
120	1310 4981 00	SUPPORT AIR FILTER	1

COOLING SYSTEM - STANDARD

Not Illustrated			
Ref	Part Number	Designation	Qty
80	1310 6000 35	Nipple-hose	1

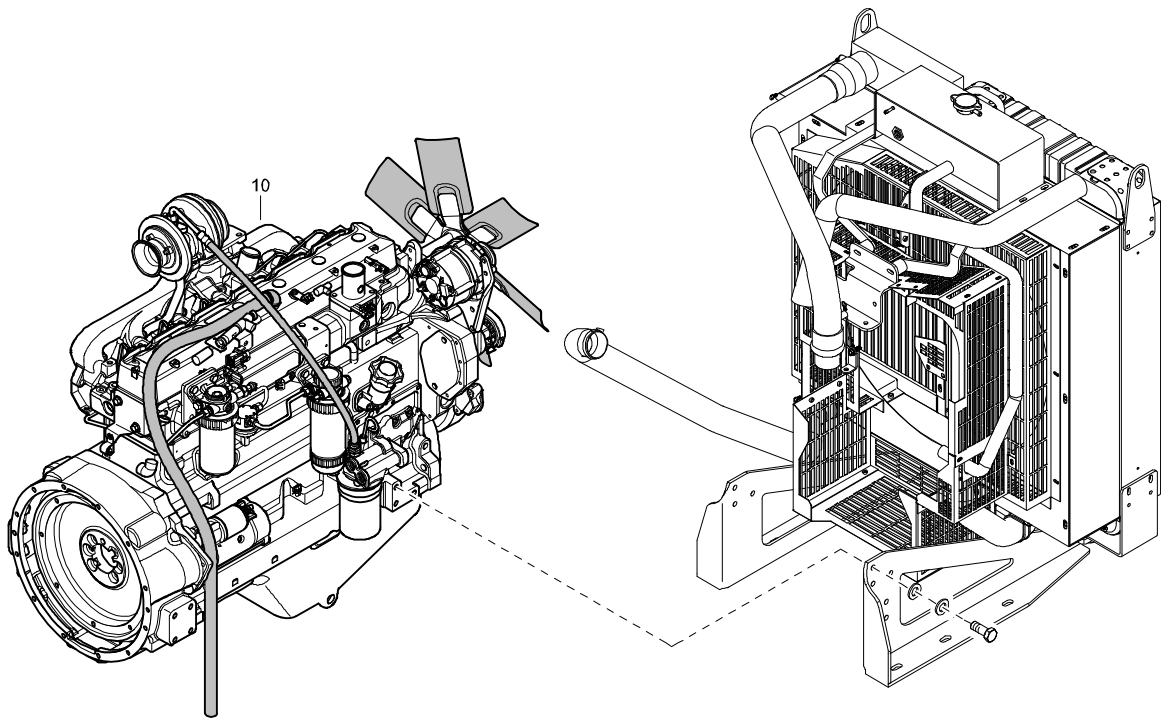


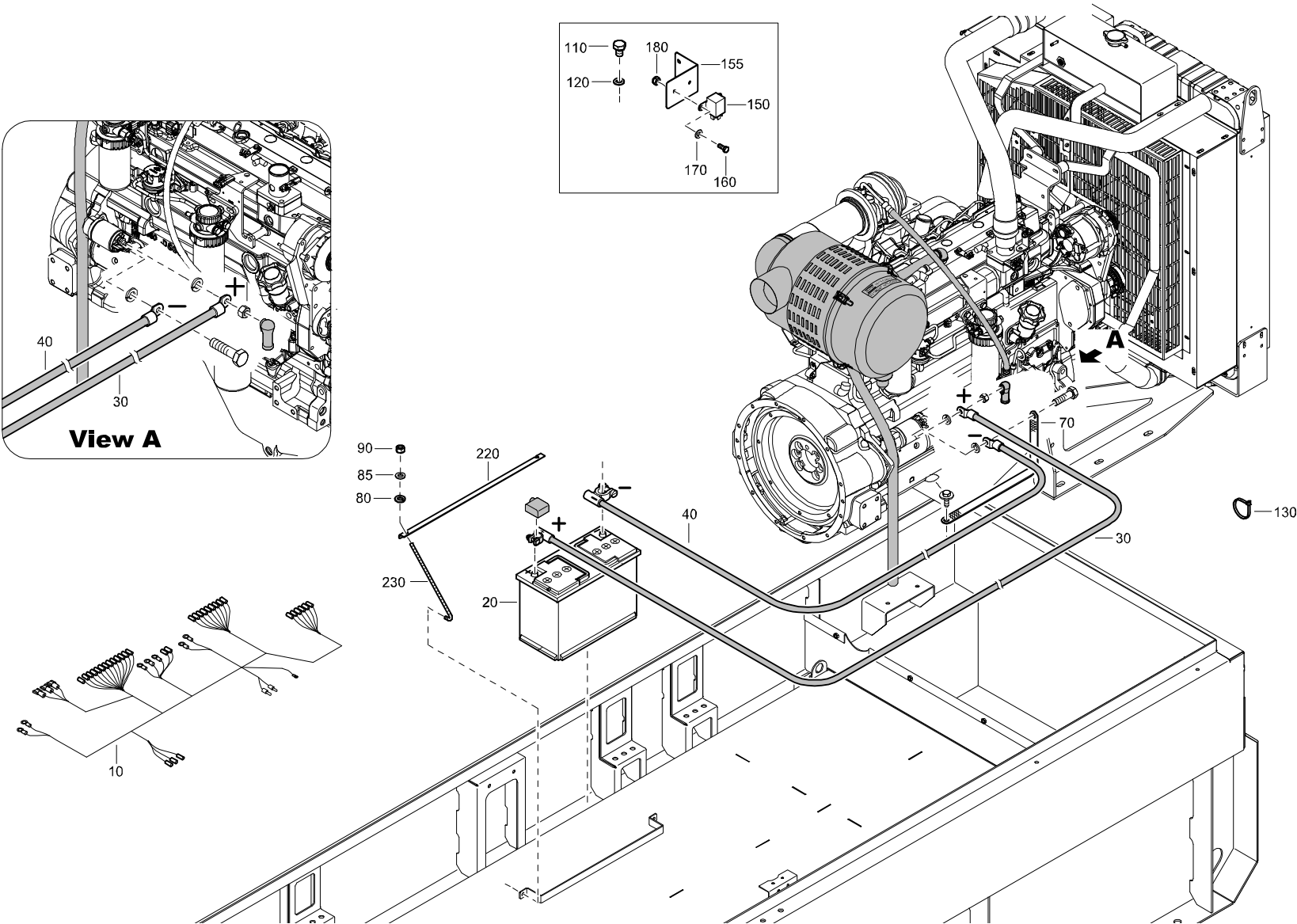
REF	PART NUMBER	DESIGNATION	QTY
10	1310 6086 00	COOLER	1
A10	1310 0740 44	CAC OUTLET PIPE	1
A20	1310 0740 45	RADIATOR INLET PIPE	1
A30	1310 0740 48	RADIATOR OUTLET PIPE	1
A40	1310 0740 47	VENT PIPE	1
25	1310 6001 38	FAN	1
35	1310 6001 39	SPACER FAN	1
40	0147 1382 03	HEX HEAD SCREW	4
50	0333 2238 00	LOCK WASHER	4
60	1310 0354 87	ADAPTER	1
70	0663 3122 00	O-RING	1
80	1310 6000 35	HOSE NIPPLE	1
90	1202 5211 00	SEAL	3
100	1202 5211 00	SEAL	3
110	1202 5211 00	SEAL	3
120	1202 5211 00	SEAL	3
130	1089 9467 21	COOLANT LEVEL SWITCH	1
140	1312 1003 25	BUSHING	1
150	1310 6329 00	PIPE CAC	1
160	1310 0323 84	HOSE CLAMP	1
170	1310 0355 56	TUBE	1
180	1615 7072 00	COOLANT DRAIN VALVE	1

Upper Rad Hose - R526786
Lower Rad Hose - R524044

ENGINE - STANDARD

REF	PART NUMBER	DESIGNATION	QTY
10	1310 0721 63	ENGINE DIESEL	1

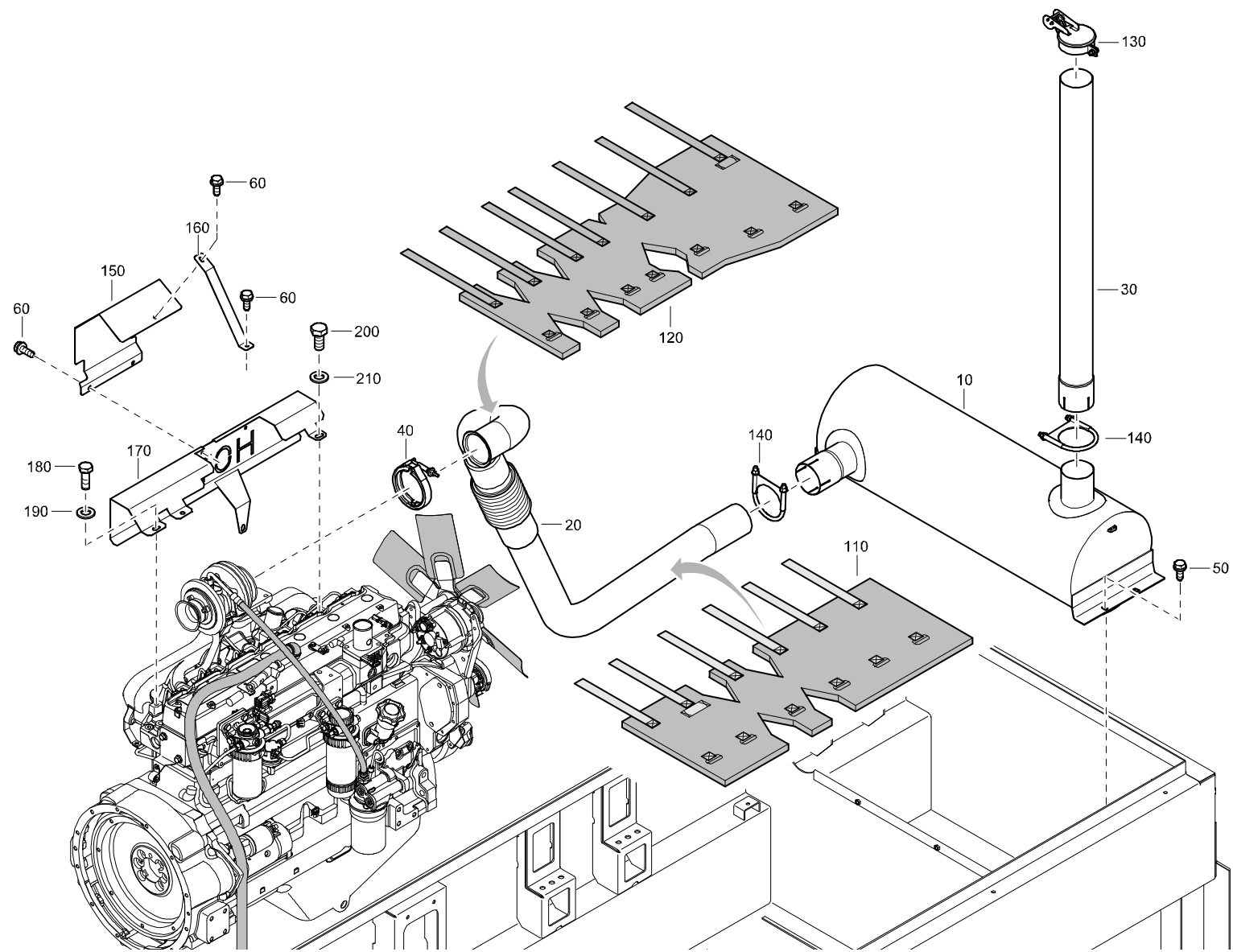




ELECTRICAL SYSTEM - STANDARD

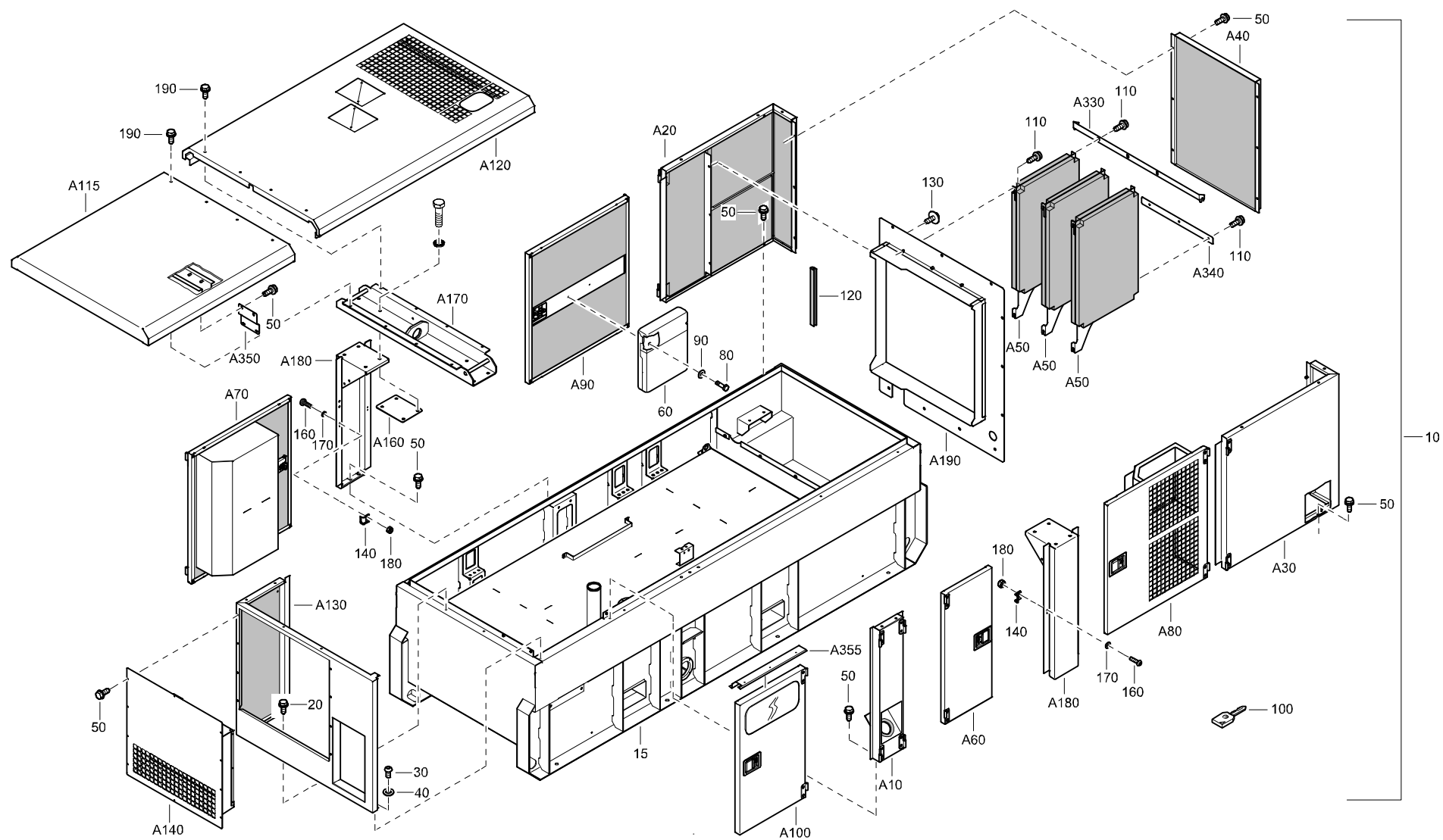
REF	PART NUMBER	DESIGNATION	QTY	REF	PART NUMBER	DESIGNATION	QTY	REF	PART NUMBER	DESIGNATION	QTY
10	1310 6087 00	WIRE HARNESS	1								
20	1310 0310 89	BATTERY	1								
30	1310 0317 65	BATTERY CABLE	1								
40	1310 0333 25	BATTERY CABLE	1								
70	1310 4246 00	GROUND STRAP	1								
80	0333 2225 00	SPRING WASHER	2								
85	0301 2321 00	FLAT WASHER	2								
90	0268 3205 00	HEX NUT	2								
110	0147 1397 03	HEX HEAD SCREW	2								
120	0301 2358 00	FLAT WASHER	2								
130	1088 1301 02	CABLE TY	10								
150	1310 0304 71	RELAY	1								
155	1310 6456 00	BRACKET RELAY	1								
160	0147 1246 03	HEX HEAD SCREW	2								
170	0301 2321 00	FLAT WASHER	2								
180	0291 1108 00	LOCKNUT	2								
220	1310 6462 00	BATTERY HOLD BRACKET	1								
230	1626 0527 00	HOOK	2								

EXHAUST SYSTEM - STANDARD



EXHAUST SYSTEM - STANDARD

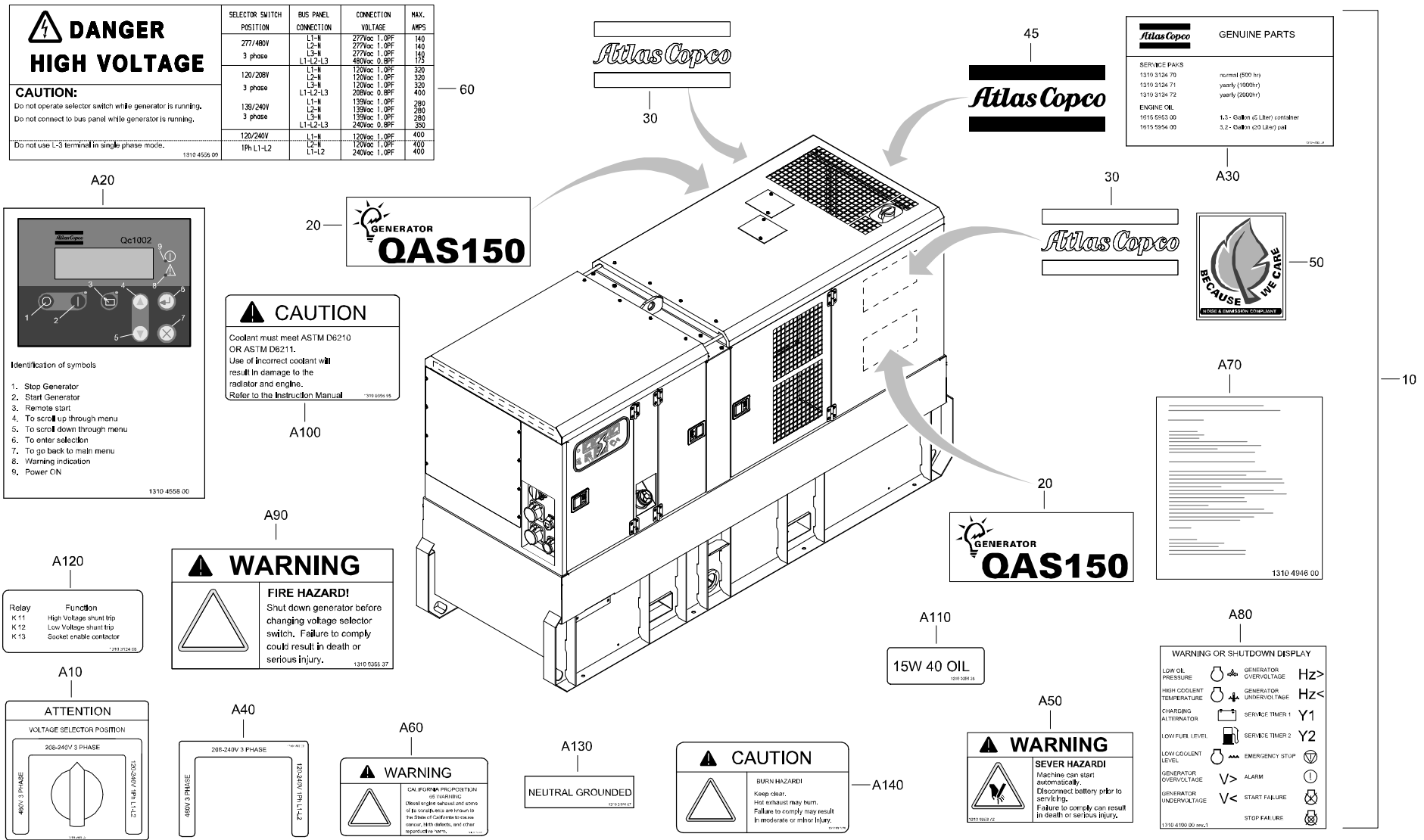
REF	PART NUMBER	DESIGNATION	QTY	REF	PART NUMBER	DESIGNATION	QTY	REF	PART NUMBER	DESIGNATION	QTY
10	1310 4988 00	MUFFLER	1								
20	1310 4989 00	EXHAUST PIPE	1								
30	1310 4990 00	EXHAUST PIPE OUTLET	1								
40	1310 0324 68	V-BAND CLAMP	1								
50	1619 2766 00	SCRAPPER BOLT	4								
60	1619 2766 00	SCRAPPER BOLT	4								
110	1626 1769 00	HEAT BLANKET	1								
120	1626 1770 00	HEAT BLANKET	1								
130	1615 9742 00	RAIN CAP	1								
140	1310 0355 81	SADDLE CLAMP	2								
150	1310 4978 00	EXHAUST SHIELD	1								
160	1310 4979 00	EXHAUST SHIELD SUPPORT	1								
170	1310 4980 00	MANIFOLD SHIELD	1								
180	0147 1362 03	HEX HEAD SCREW	2								
190	0301 2344 00	FLAT WASHER	2								
200	0147 1398 03	HEX HEAD SCREW	2								
210	0301 2358 00	FLAT WASHER	2								



BODYWORK - STANDARD

REF	PART NUMBER	DESIGNATION	QTY	REF	PART NUMBER	DESIGNATION	QTY	REF	PART NUMBER	DESIGNATION	QTY
10	1310 0771 00	CANOPY SET	1	40	0301 2335 00	FLAT WASHER	2				
•A10	1310 4938 80	PANEL ASSY FUEL FILL (For details see page 40)	1	50	1619 2766 00	SCRAPPER BOLT	28				
•A20	1310 4939 80	CORNER PANEL ASSY (For details see page 41)	1	60	1310 0356 39	DOCUMENT HOLDER	1				
•A30	1310 4939 90	CORNER PANEL ASSY (For details see page 42)	1	80	0144 3206 03	HEX HEAD SCREW	2				
•A40	1310 4940 80	SERVICE PANEL ASSY (For details see page 43)	1	90	0301 2327 00	FLAT WASHER	2				
•A50	1310 4941 80	BAFFLE ASSY (For details see page 44)	3	100	1615 7271 00	KEY	2				
•A60	1310 4942 80	DOOR ASSY (For details see page 45)	1	110	1619 2766 00	SCRAPPER BOLT	24				
•A70	1310 4943 80	DOOR ASSY (For details see page 46)	1	120	1503 1056 00	SEAL	2				
•A80	1310 4944 80	DOOR ASSY (For details see page 47)	1	130	1615 5664 00	SCRAPPER BOLT	13				
•A90	1310 4955 80	DOOR ASSY (For details see page 48)	1	140	1604 5031 00	BRACKET DOOR CATCH	4				
•A100	1310 4960 80	CUBICLE DOOR ASSY (For details see page 49)	1	160	0215 0003 89	SOCK HEAD SCREW	8				
•A115	1310 4961 80	REAR ROOF ASSY (For details see page 50)	1	170	0301 2321 00	FLAT WASHER	8				
•A120	1310 4962 80	FRONT ROOF ASSY (For details see page 51)	1	180	0291 1108 00	LOCKNUT	8				
•A130	1310 4963 80	PANEL ASSY (For details see page 52)	1	190	1619 2766 00	SCRAPPER BOLT	8				
•A140	1310 4964 80	PLATE ASSY (For details see page 53)	1								
•A160	1310 4966 00	PLATE LIFTING SUPPORT	2								
•A170	1310 4967 00	LIFTING BEAM	1								
•A180	1310 4968 00	LIFTING SUPPORT	2								
•A190	1310 4969 00	COOLER SUPPORT	1								
•A330	1310 4984 00	SUPPORT	1								
•A340	1310 4985 00	SUPPORT	1								
•A350	1310 4986 00	SUPPORT	1								
•A355	1310 6403 00	RAIN GUARD	1								
15	1310 0771 10	FRAME AND FUEL TANK KIT (For details see page 38)	1								
20	1619 2766 00	SCRAPPER BOLT	4								
30	0215 0003 77	SOCK HEAD SCREW	2								

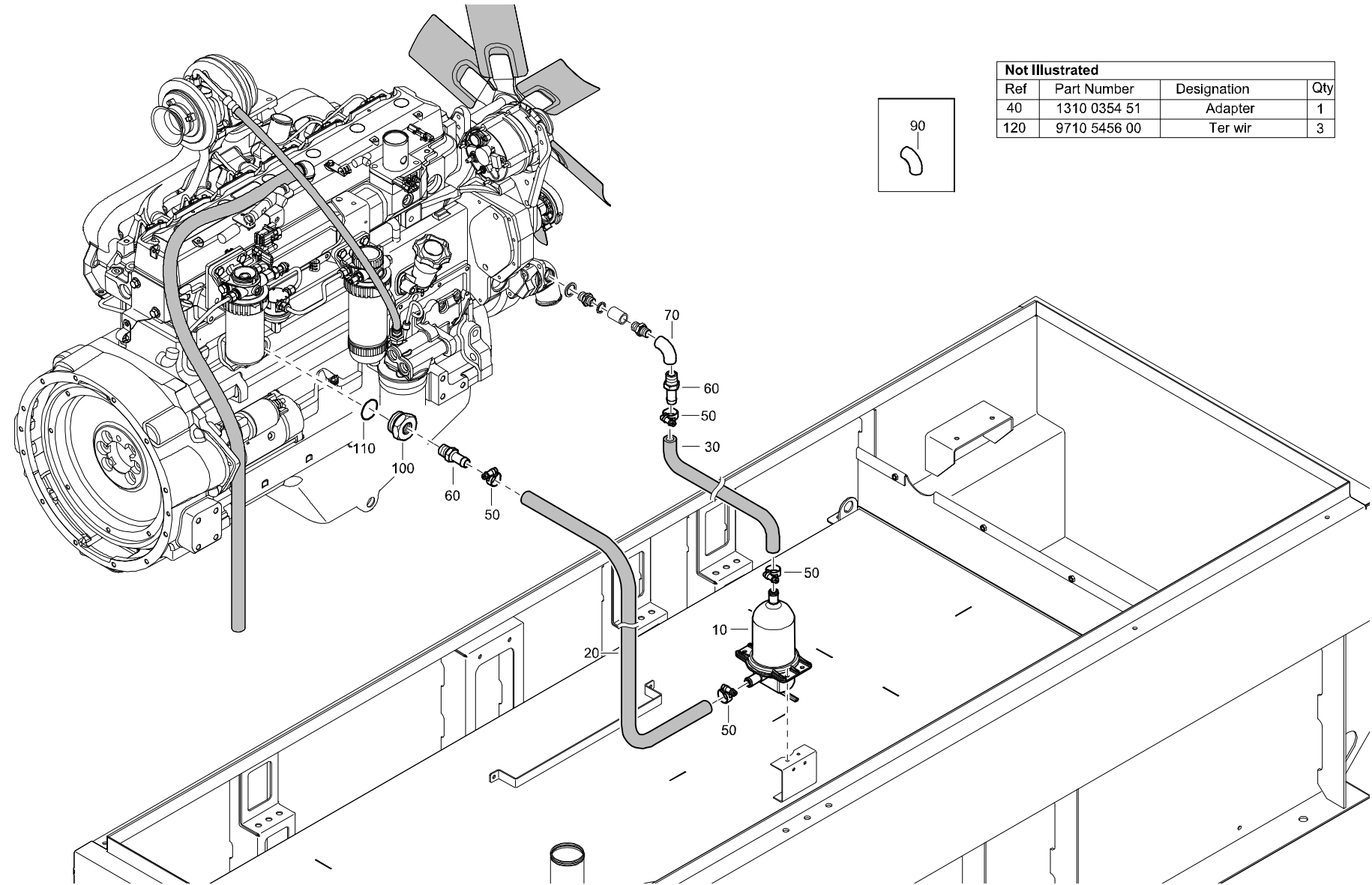
LABELS - STANDARD



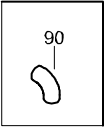
LABELS - STANDARD

REF	PART NUMBER	DESIGNATION	QTY	REF	PART NUMBER	DESIGNATION	QTY	REF	PART NUMBER	DESIGNATION	QTY
10	1310 4557 00	LABEL SHEET	1								
•A10	1310 4561 00	LABEL SELECTOR SW POSITION	1								
•A20	1310 4558 00	LABEL QC1002 OPERATING INST	1								
•A30	1310 4559 00	LABEL GENUINE PARTS	1								
•A40	1310 4560 00	LABEL SELECTOR SW VOLTAGES	1								
•A50	1310 0353 72	LABEL WARNING UNIT CAN START	2								
•A60	1310 3112 36	LABEL CALIFORNIA EMISSIONS	1								
•A70	1310 4946 00	LABEL OPERATING INSTRUCTION	1								
•A80	1310 4100 00	LABEL QC1001 OPERATING	1								
•A90	1310 0356 37	LABEL WARNING ALTERNATOR	1								
•A100	1310 0356 95	LABEL COOLANT MUST MEET ASTM D	1								
•A110	1310 0356 38	LABEL OIL FILL TYPE	1								
•A120	1310 3124 68	LABEL QAS RELAY FUNCT	1								
•A130	1310 3124 67	LABEL NEUTRAL GROUNDED	1								
•A140	1310 0313 24	LABEL CAUTION HOT EXHAUST	1								
20	1310 4542 00	LABEL MODEL DESIGNATION	2								
30	0690 1150 01	LABEL LOGO WHITE	2								
45	0690 1150 00	LABEL LOGO BLACK	1								
50	1604 7907 02	LABEL BECAUSE WE CARE	1								
60	1310 4556 00	INFORMATION LABEL	1								

COOLANT HEATER - STANDARD



Not Illustrated			
Ref	Part Number	Designation	Qty
40	1310 0354 51	Adapter	1
120	9710 5456 00	Ter wir	3

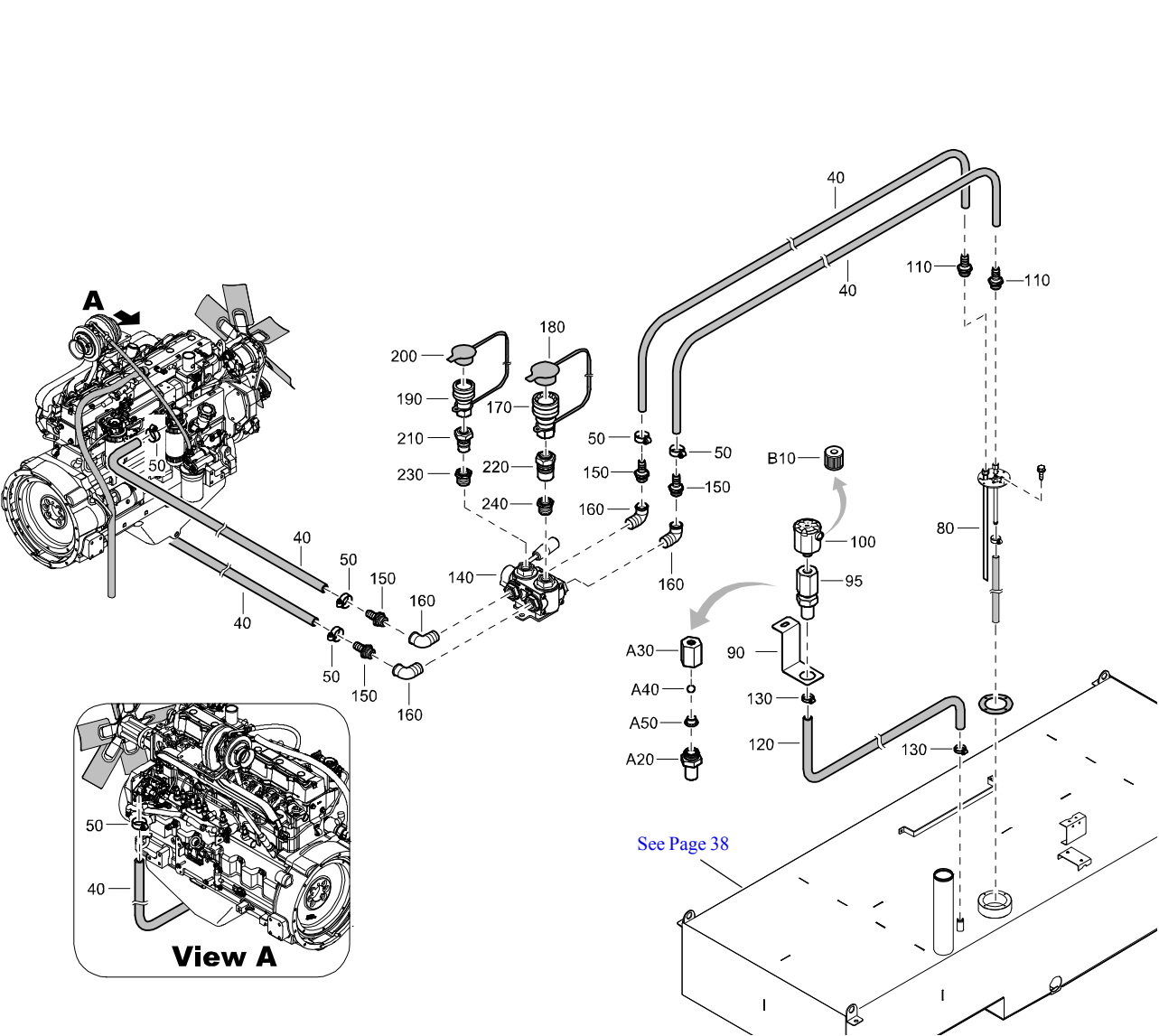


COOLANT HEATER - STANDARD

REF	PART NUMBER	DESIGNATION	QTY	REF	PART NUMBER	DESIGNATION	QTY	REF	PART NUMBER	DESIGNATION	QTY
10	1310 0351 96	COOLANT HEATER	1								
20	1310 2511 06	HOSE	AR								
30	1310 2511 06	HOSE	AR								
40	1310 0354 51	ADAPTER	1								
50	1310 0352 02	HOSE CLAMP	4								
60	1310 0351 95	HOSE NIPPLE	2								
70	1310 0355 62	ELBOW PIPE	2								
90	1310 0355 62	ELBOW PIPE	2								
100	1310 0354 87	ADAPTER	1								
110	0663 3122 00	O-RING	1								
120	9710 5456 00	TER WIR	3								

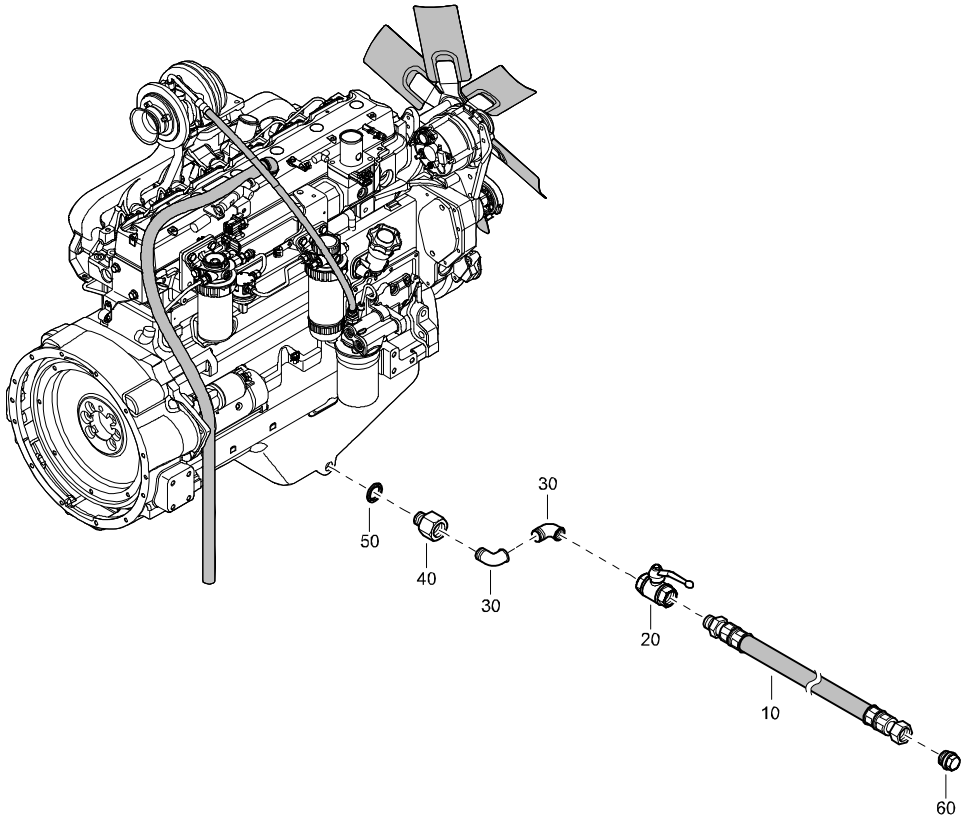


FUEL SYSTEM - STANDARD



REF	PART NUMBER	DESIGNATION	QTY
40	1310 0311 98	HOSE	AR
50	1310 0323 84	HOSE CLAMP	4
80	1310 4526 00	TUBE FUEL INLET/OUTLET	2
90	1310 6131 00	BRACKET FUEL TANK VENT	1
95	1626 1871 80	NIPPLE	1
•A20	1626 1871 00	NIPPLE	1
•A30	1626 0264 00	NIPPLE	1
•A40	0517 1100 31	BEARING BALL	1
•A50	1626 0266 00	WASHER	1
100	1626 0375 00	FILTER FUEL TANK VENT	1
•B10	2914 9975 00	FILTER ELEMENT	1
110	1310 6000 35	HOSE NIPPLE	2
120	0072 8403 16	HOSE	AR
130	0347 6105 00	HOSE CLAMP	2
140	1604 6111 00	3 WAY VALVE	1
150	0571 0020 14	HOSE NIPPLE	4
160	1310 0355 62	ELBOW PIPE	4
170	1310 0360 49	QUICK COUPLING	1
180	1310 0360 51	PLUG	1
190	1310 0360 48	QUICK COUPLING	1
200	1310 0360 50	PLUG	1
210	1310 0367 10	QUICK DISCONNECT NIPPLE	1
220	1310 0367 07	QUICK DISCONNECT NIPPLE	1
230	1310 0720 18	ADAPTER	1
240	1310 0720 19	ADAPTER	1

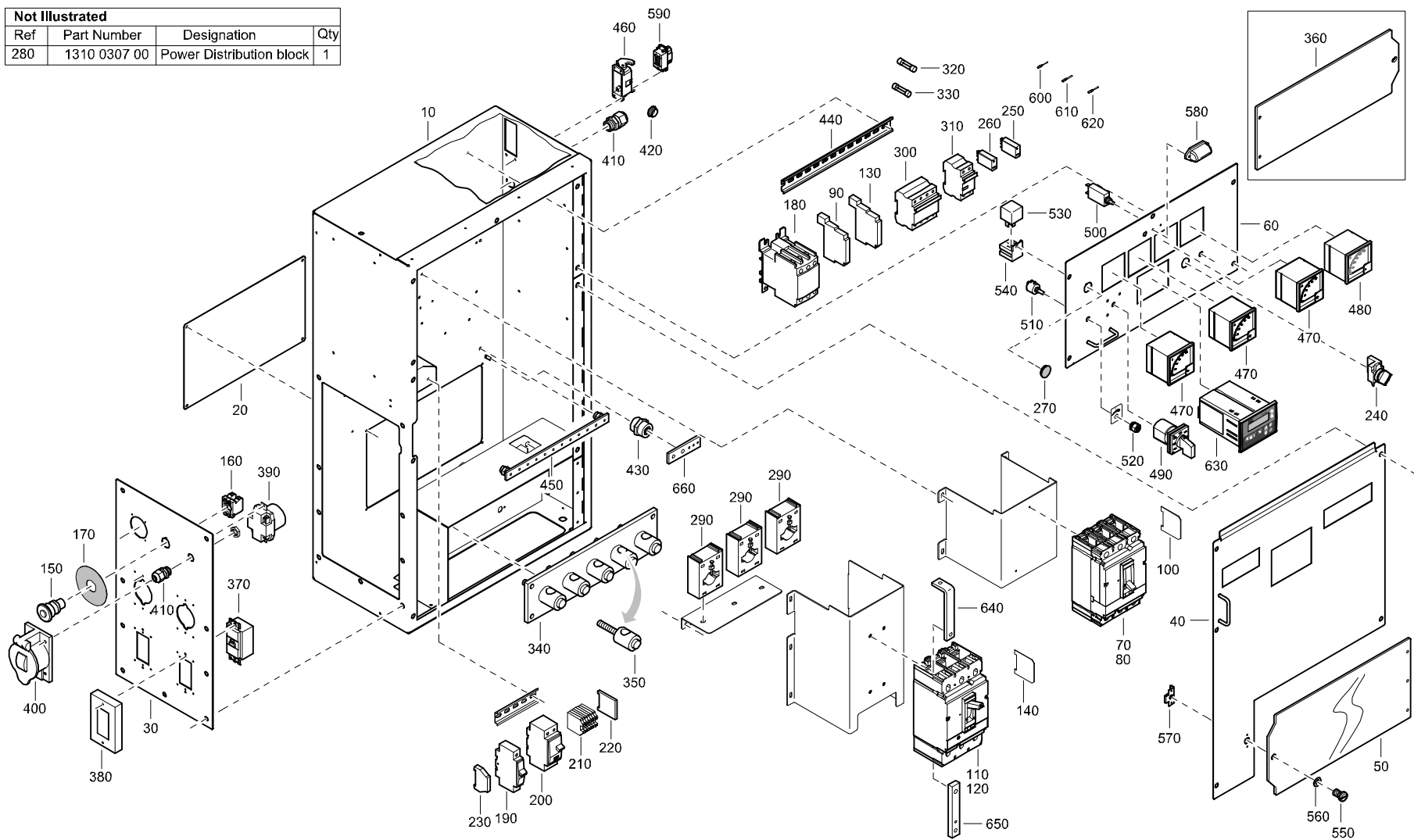
DRAINS - STANDARD



REF	PART NUMBER	DESIGNATION	QTY
10	1310 6000 25	HOSE ASSY	1
20	VAL02131	BALL VALVE	1
30	1310 0355 62	ELBOW	2
40	1310 0365 52	ADAPTER	1
50	0661 1000 27	SEALING WASHER	1
60	1310 0355 25	PLUG	1

CUBICLE ASSEMBLY - STANDARD

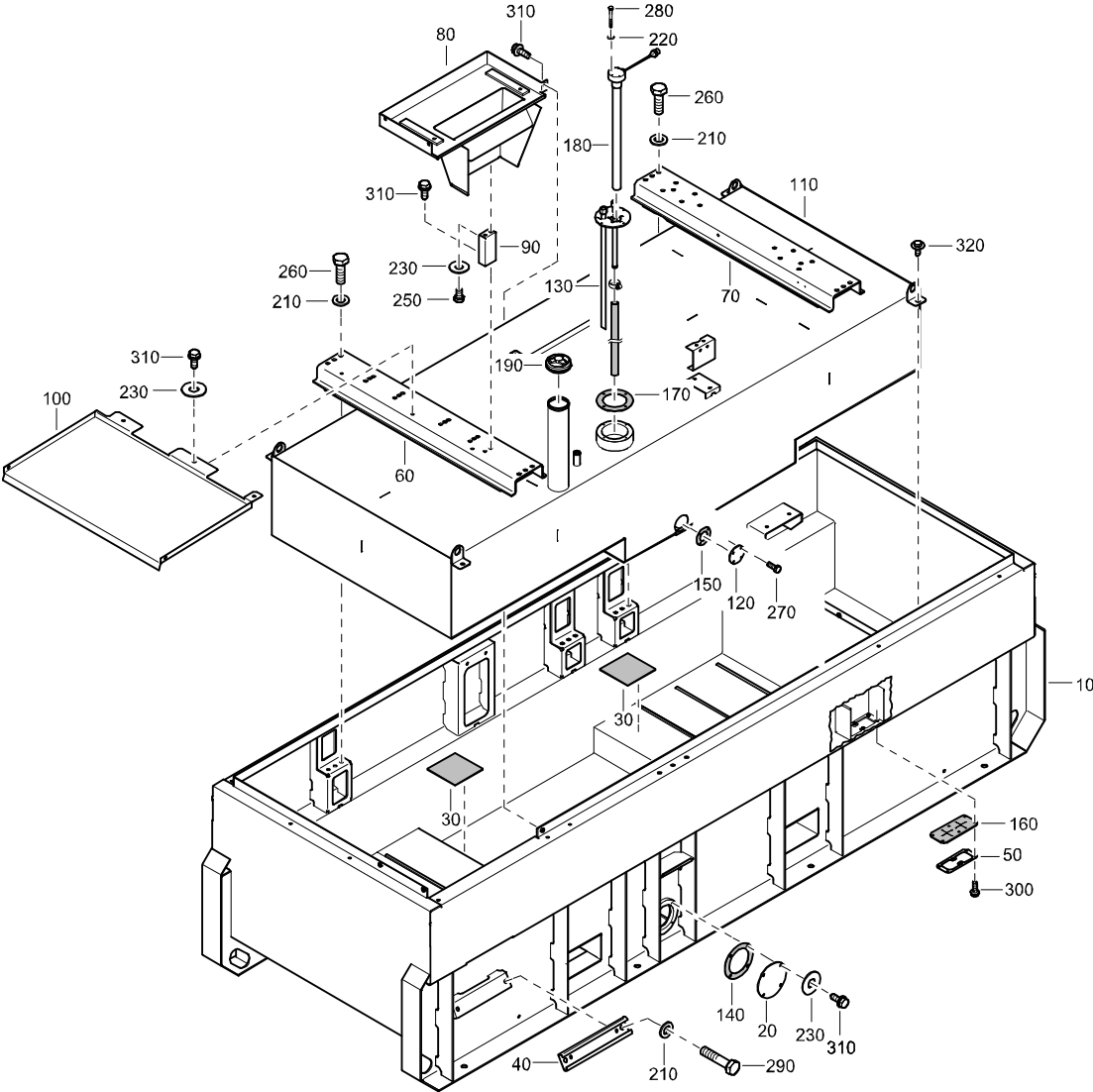
Not Illustrated			
Ref	Part Number	Designation	Qty
280	1310 0307 00	Power Distribution block	1



CUBICLE ASSEMBLY - STANDARD

REF	PART NUMBER	DESIGNATION	QTY	REF	PART NUMBER	DESIGNATION	QTY	REF	PART NUMBER	DESIGNATION	QTY
–	1310 4992 80	CUBICLE ASSEMBLY (From page 19)		•400	1089 9412 12	PROTECTION	2				
•10	1310 4992 00	CUBICLE SHEETMETAL	1	•410	0698 5140 71	CABLE GLAND	1				
•20	1310 4993 00	PLATE ACCESS CUBICLE	1	•420	0697 9810 58	PLUG	1				
•30	1310 4994 00	PANEL SOCKET	1	•430	1089 9385 03	ISOLATOR	1				
•40	1310 4995 00	PANEL DOOR CUBICLE	1	•440	0993 7106 00	RAIL DIN MOUNTING	AR				
•50	1310 4997 00	DOOR TERMINAL BOARD	1	•450	1310 0306 61	ISOLATOR	1				
•60	1310 4996 00	PLATE CONTROL PANEL	1	•460	1088 0029 50	HOUSING	1				
•70	1310 0721 57	CIRCUIT BREAKER	1	•470	1089 9381 18	AMMETER	3				
•80	1310 0306 45	SHUNT TRIP	1	•480	1089 9383 01	VOLTMETER	1				
•90	1310 0306 44	CONTACT AUXILIARY	1	•490	1089 9082 22	SWITCH	1				
•100	1310 0307 14	BARRIER	1	•500	1089 9423 01	FUSE	1				
•110	1310 0306 46	CIRCUIT BREAKER	1	•510	1089 9371 21	POTMETER	1				
•120	1310 0306 45	SHUNT TRIP	1	•520	1089 9371 50	LOCK	1				
•130	1310 0306 44	CONTACT AUXILIARY	1	•530	1310 0306 62	RELAY	2				
•140	1310 0307 15	BARRIER	1	•540	1310 0306 63	RELAY BASE	2				
•150	1310 0306 47	EMERGENCY STOP	1	•550	1615 7166 00	STUD	1				
•160	1310 0306 48	CONTACT BLOCK	1	•560	1615 6727 00	WASHER	1				
•170	1310 0306 49	LABEL EMERGENCY STOP	1	•570	1615 6728 00	PLATE	1				
•180	1310 0306 50	CONTACTOR	1	•580	1310 0307 18	LIGHT	1				
•190	1310 0306 51	CIRCUIT BREAKER	2	•590	1088 0029 45	INSERT MALE	1				
•200	1310 0306 52	CIRCUIT BREAKER	2	•600	1088 0029 61	CONTACT MALE	5				
•210	1310 0306 53	TERMINAL BLOCK	5	•610	1088 0029 56	CONTACT MALE	1				
•220	1310 0306 54	BARRIER TERMINAL BLOCK	1	•620	1088 0029 55	CONTACT MALE	3				
•230	1310 0306 55	TERMINAL END STOP	2	•630	1604 9418 00	CONTROLLER	1				
•240	1089 0263 27	SELECTOR SWITCH	1	•640	1310 0307 19	BUSBAR LINE SIDE	3				
•250	1310 0306 56	RELAY	2	•650	1310 0307 20	BUSBAR LOAD SIDE	3				
•260	1310 0306 57	RELAY BASE	2	•660	1310 0307 21	BUSBAR NEUTRAL	1				
•270	1310 0307 16	PLUG	1								
•280	1310 0307 00	POWER DISTRIBUTION BLOCK	1								
•290	1089 9484 65	TRANSFORMER	3								
•300	1310 0306 58	FUSEHOLDER	1								
•310	1310 0306 59	FUSEHOLDER	1								
•320	1310 0307 17	FUSE	3								
•330	1310 0306 60	FUSE	2								
•340	1615 8508 00	TERMINAL BOARD	1								
•350	1615 8893 00	TERMINAL	5								
•360	1626 2302 00	DOOR PLEXI GLASS	1								
•370	1089 9412 01	RECEPTACLE	2								
•380	1089 9412 11	PROTECTION	2								
•390	1089 9412 02	RECEPTACLE	2								

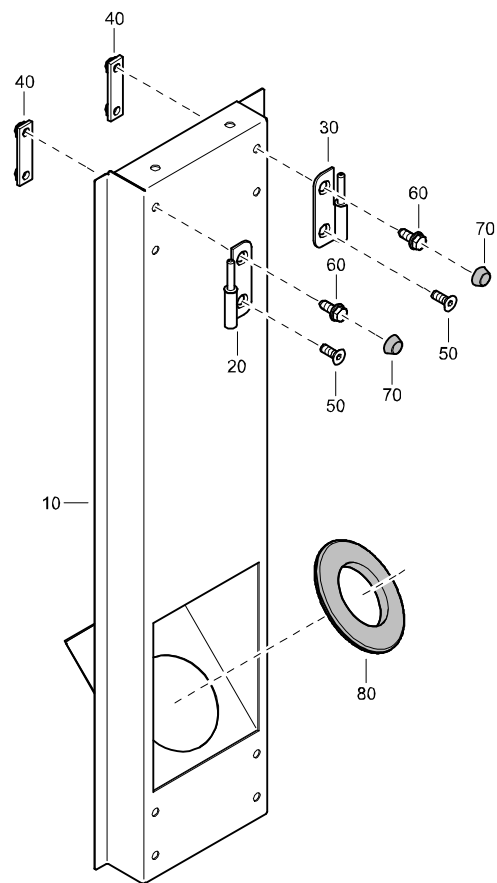
FRAME AND FUEL TANK KIT - STANDARD



FRAME AND FUEL TANK KIT - STANDARD

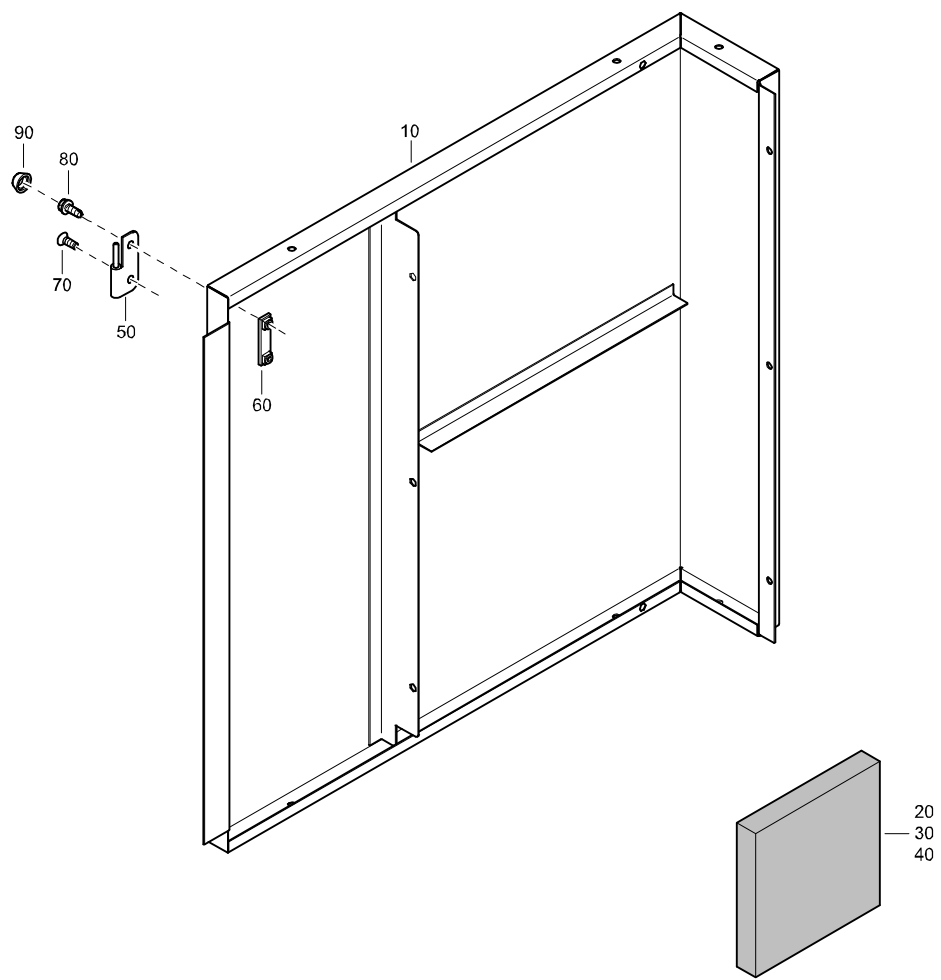
REF	PART NUMBER	DESIGNATION	QTY	REF	PART NUMBER	DESIGNATION	QTY	REF	PART NUMBER	DESIGNATION	QTY
–	1310 0771 10	FRAME AND FUEL TANK KIT	(From page 28)								
•10	1626 1011 03	FRAME	1								
•20	1604 6551 01	FLANGE	1								
•30	1626 1805 01	SEAL	AR								
•40	1626 0593 00	CLAMP	1								
•50	1626 0595 01	PLATE	1								
•60	1626 1073 01	BEAM	1								
•70	1626 1075 02	PLATE	1								
•80	1626 1129 00	BRACKET	1								
•90	1626 1072 00	SUPPORT	1								
•100	1626 1132 00	PLATE	1								
•110	1626 1012 04	FUEL TANK	1								
•120	1604 4344 00	FLANGE FUEL TANK	1								
•130	1626 0219 03	MANIFOLD	1								
•135	1619 5898 01	HEX HEAD SCREW	4								
•140	1604 6550 00	GASKET	1								
•150	1604 4345 00	SEAL	1								
•160	1626 0594 01	SEAL	1								
•170	1604 2780 02	GASKET	1								
•180	1089 0659 08	FUEL LEVEL SENSOR	1								
•190	1615 6947 01	FUEL CAP	1								
•210	0301 2358 00	FLAT WASHER	14								
•220	0301 2318 00	FLAT WASHER	5								
•230	0300 8008 00	FLAT WASHER	8								
•250	0147 1320 03	HEX HEAD SCREW	2								
•260	0147 1401 03	HEX HEAD SCREW	12								
•270	0147 1246 03	HEX HEAD SCREW	4								
•280	0147 1413 03	HEX HEAD SCREW	4								
•290	0147 1405 03	HEX HEAD SCREW	2								
•300	1619 5898 01	SCRAPPER BOLT	10								
•310	1619 2766 00	SCRAPPER BOLT	14								
•320	1615 5664 00	SCRAPPER BOLT	4								

PANEL ASSEMBLY FUEL FILL - STANDARD



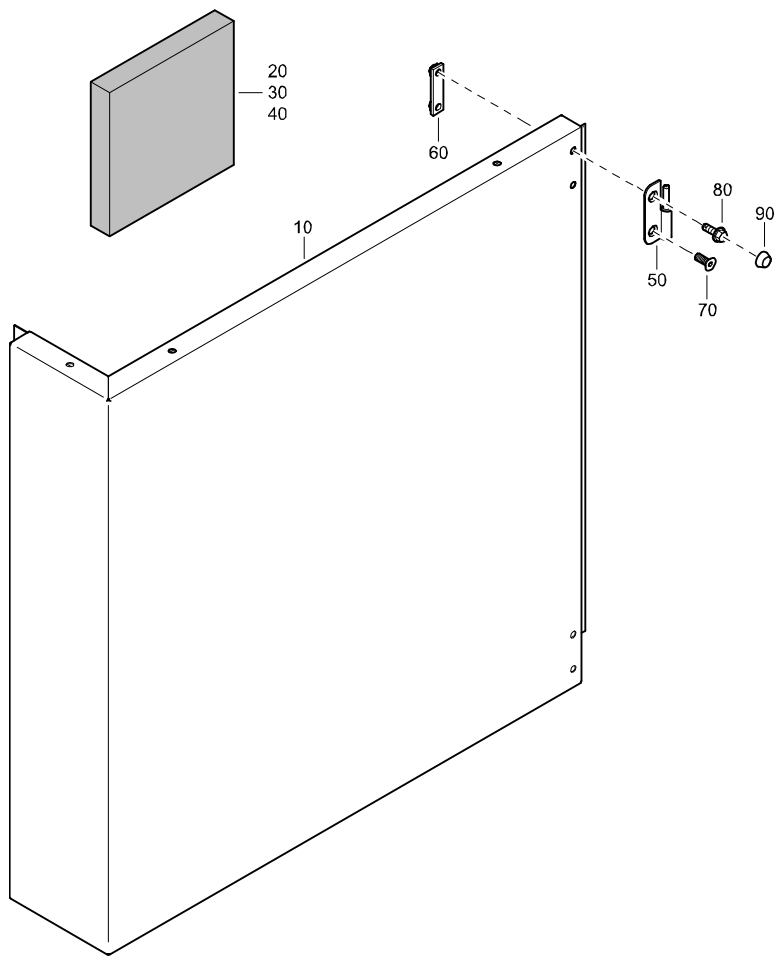
REF	PART NUMBER	DESIGNATION	QTY
-	1310 4938 80	PANEL ASSEMBLY FUEL FILL (From page 28)	
•10	1310 4938 00	PANEL FUEL FILL	1
•20	1604 3430 00	HINGE	2
•30	1604 3428 00	HINGE	2
•40	1615 5684 00	BRACKET HINGE RETAINER	4
•50	0216 1324 03	SOCK HEAD SCREW	4
•60	1619 2766 00	SCRAPPER BOLT	4
•70	1613 3672 00	CAP BOLT PROTECT	4
•80	1604 0248 00	GASKET	1

CORNER PANEL ASSEMBLY - STANDARD



REF	PART NUMBER	DESIGNATION	QTY
-	1310 4939 80	CORNER PANEL ASSEMBLY (From page 28)	
•10	1310 4939 00	CORNER PANEL	1
•20	1310 4939 70	INSULATION	2
•30	1310 4939 71	INSULATION	1
•40	1310 4939 72	INSULATION	1
•50	1604 3428 00	HINGE	2
•60	1615 5684 00	BRACKET HINGE RETAINER	2
•70	0216 1324 03	SOCK HEAD SCREW	2
•80	1619 2766 00	SCRAPPER BOLT	2
•90	1613 3672 00	CAP BOLT PROTECT	2

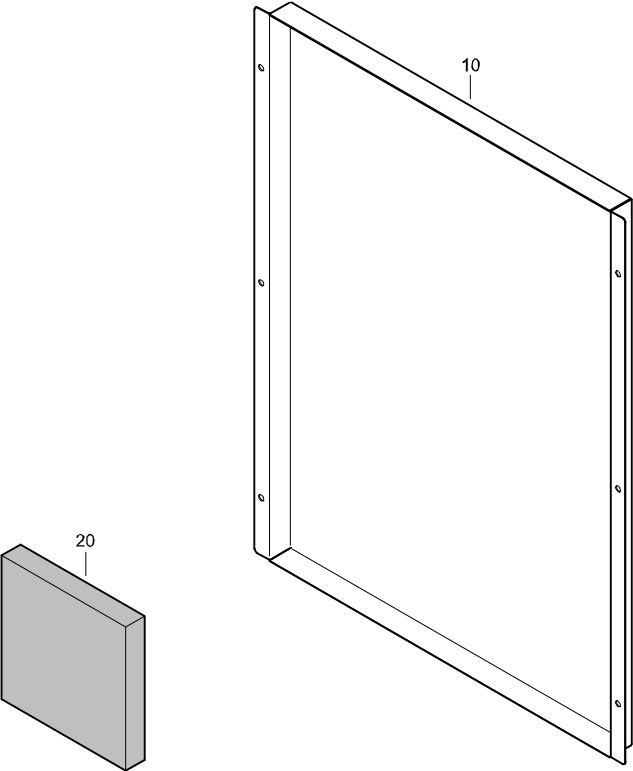
CORNER PANEL ASSEMBLY - STANDARD



REF	PART NUMBER	DESIGNATION	QTY
-	1310 4939 90	CORNER PANEL ASSEMBLY (From page 28)	
•10	1310 4939 00	CORNER PANEL	1
•20	1310 4939 70	INSULATION	2
•30	1310 4939 71	INSULATION	1
•40	1310 4939 72	INSULATION	1
•50	1604 3428 00	HINGE	2
•60	1615 5684 00	BRACKET HINGE RETAINER	2
•70	0216 1324 03	SOCK HEAD SCREW	2
•80	1619 2766 00	SCRAPPER BOLT	2
•90	1613 3672 00	CAP BOLT PROTECT	2

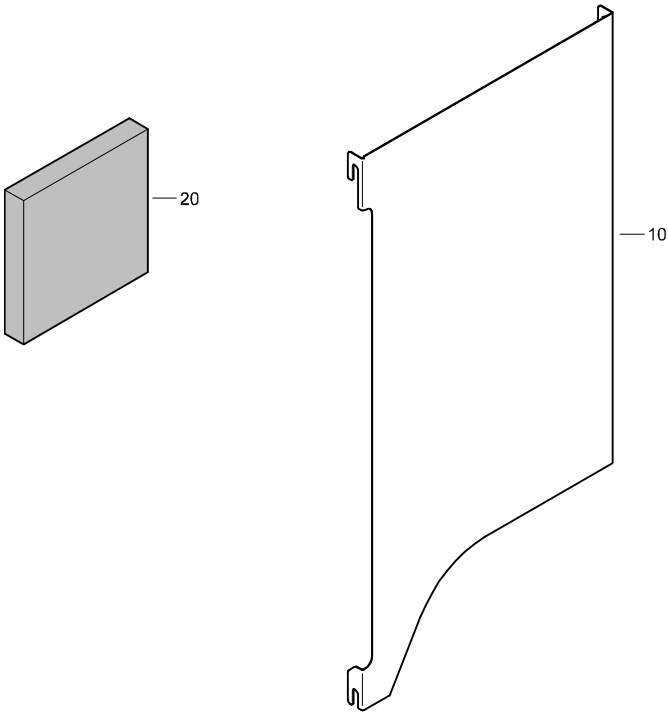
SERVICE PANEL ASSEMBLY - STANDARD

REF	PART NUMBER	DESIGNATION	QTY
-	1310 4940 80	SERVICE PANEL ASSEMBLY (From page 28)	
•10	1310 4940 00	SERVICE PANEL	1
•20	1310 4940 70	INSULATION	1

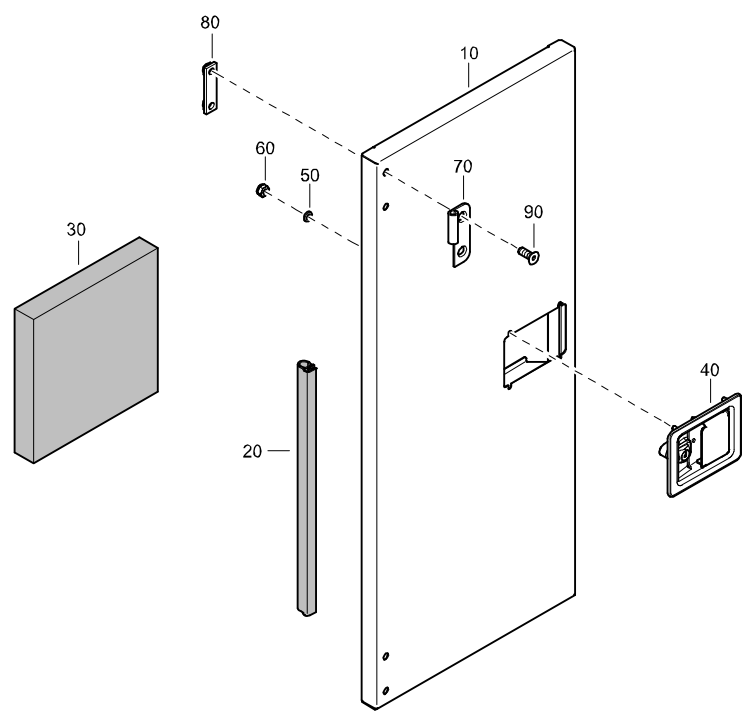


BAFFLE ASSEMBLY - STANDARD

REF	PART NUMBER	DESIGNATION	QTY
-	1310 4941 80	BAFFLE ASSEMBLY (From page 28)	
•10	1310 4941 00	OUTLET BAFFLE	3
•20	1310 4941 70	INSULATION	6

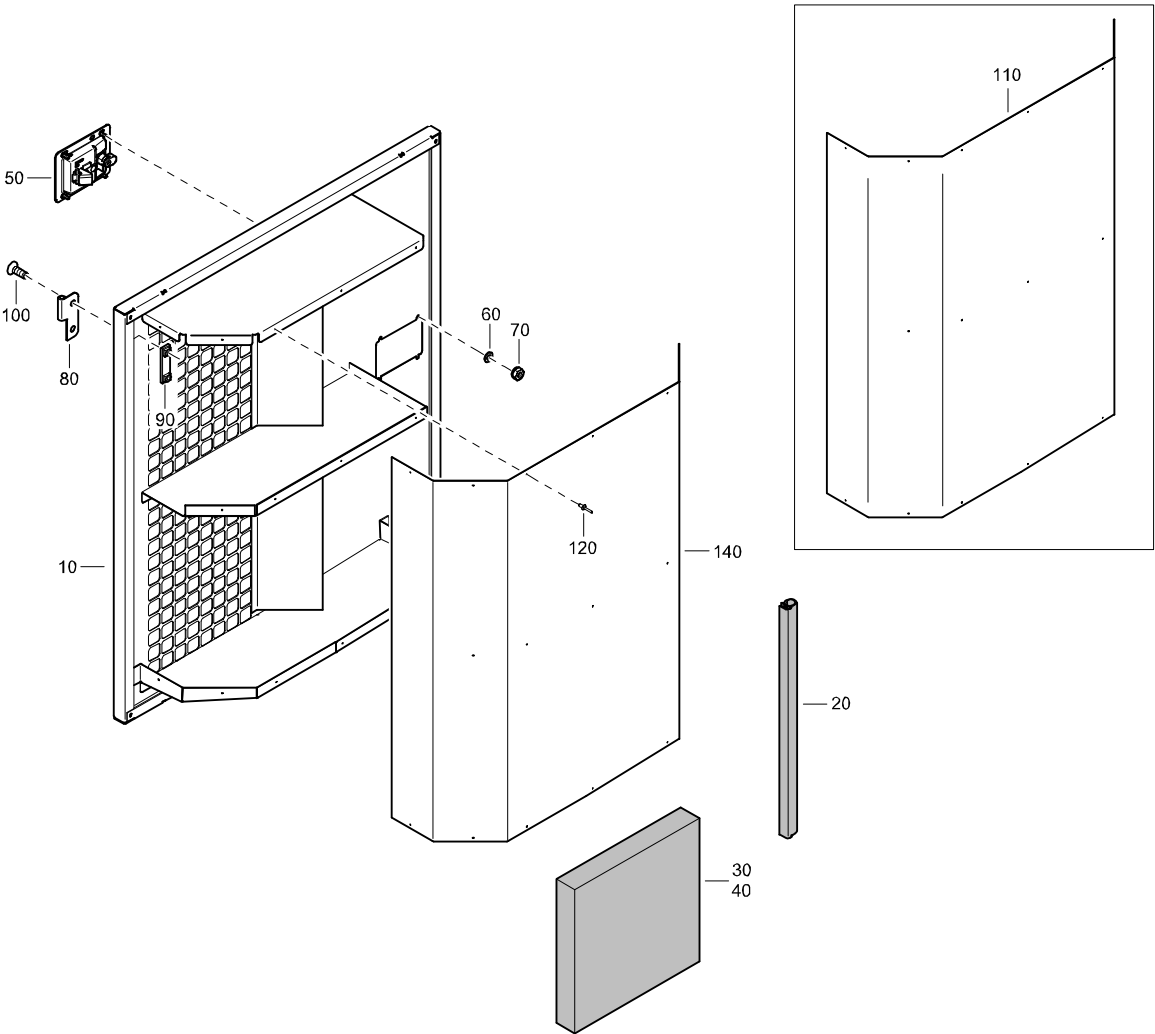


DOOR ASSEMBLY - STANDARD



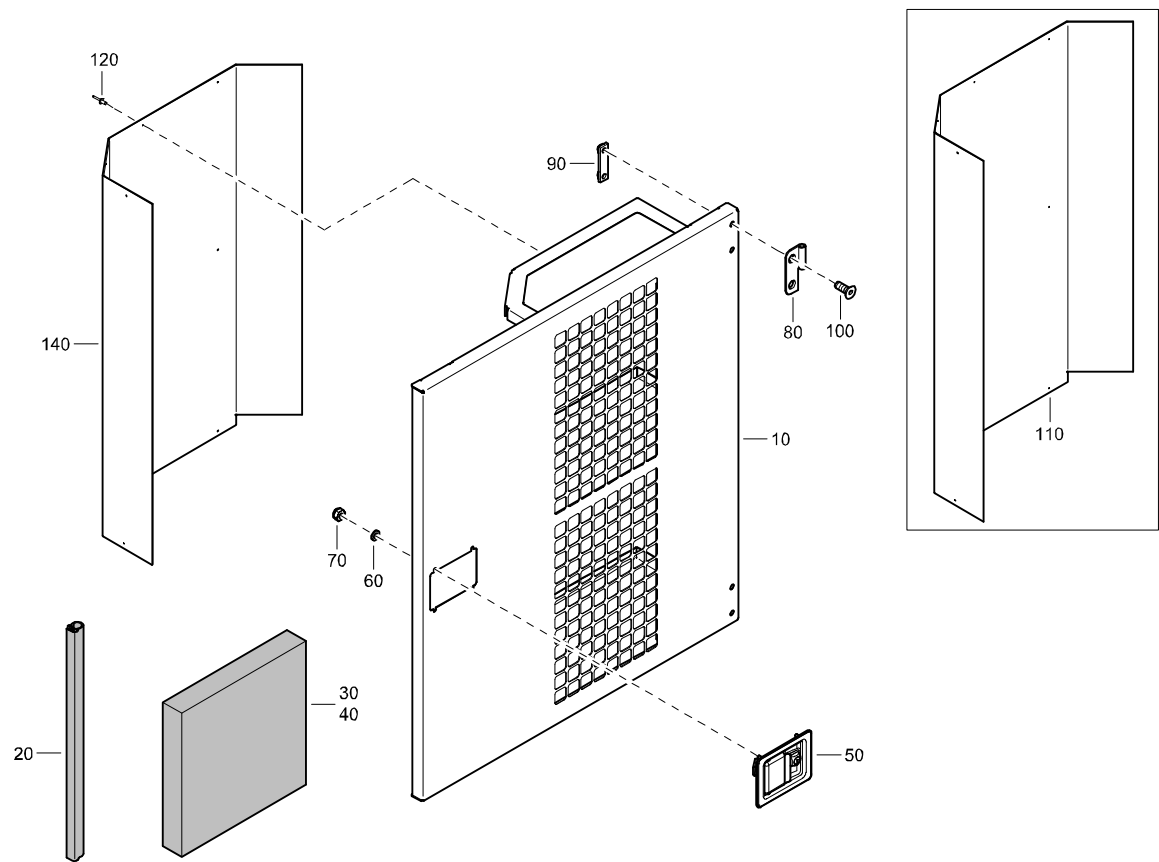
REF	PART NUMBER	DESIGNATION	QTY
-	1310 4942 80	DOOR ASSEMBLY (From page 28)	
•10	1310 4942 00	DOOR	1
•20	1604 4317 00	SEAL	AR
•30	1310 4942 70	INSULATION	2
•40	1615 6967 03	HANDLE	1
•50	0301 2321 00	FLAT WASHER	4
•60	0291 1108 00	LOCKNUT	4
•70	1604 3429 00	HINGE	2
•80	1615 5684 00	BRACKET HINGE RETAINER	2
•90	0216 1324 03	SOCK HEAD SCREW	4

DOOR ASSEMBLY - STANDARD



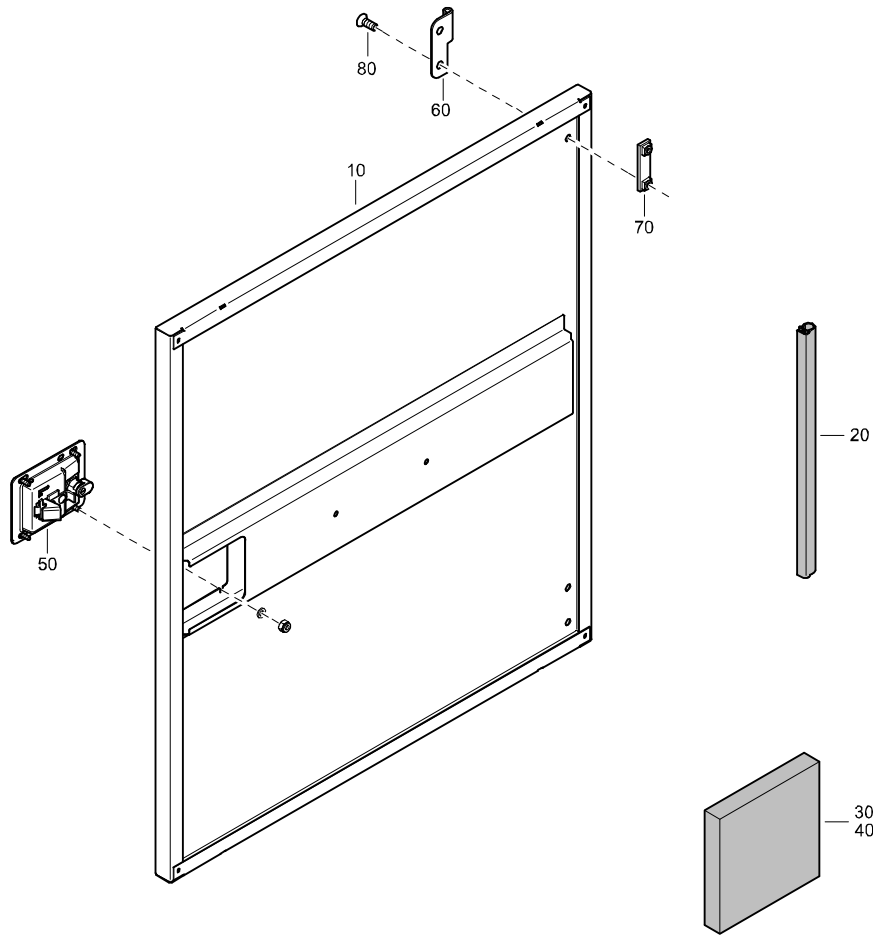
REF	PART NUMBER	DESIGNATION	QTY
-	1310 4943 80	DOOR ASSEMBLY (From page 28)	
•10	1310 4943 00	DOOR	1
•20	1604 4317 00	SEAL	AR
•30	1310 4943 70	INSULATION	2
•40	1310 4943 71	INSULATION	1
•50	1615 6967 03	HANDLE	1
•60	0301 2321 00	FLAT WASHER	4
•70	0291 1108 00	LOCKNUT	4
•80	1604 3431 00	HINGE	2
•90	1615 5684 00	BRACKET HINGE RETAINER	2
•100	0216 1324 03	SOCK HEAD SCREW	4
•110	1626 3132 00	PLATE	1
•120	0129 3107 00	RIVET	14
•140	1310 4943 72	PLATE DOOR INLET	1

DOOR ASSEMBLY - STANDARD



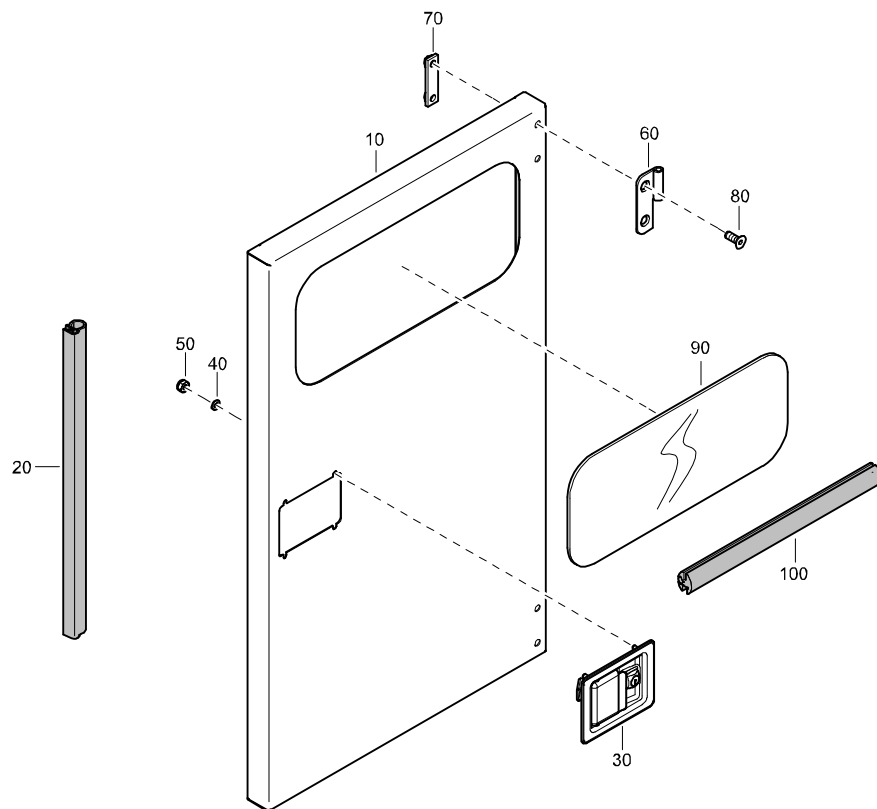
REF	PART NUMBER	DESIGNATION	QTY
-	1310 4944 80	DOOR ASSEMBLY (From page 28)	
•10	1310 4944 00	DOOR	1
•20	1604 4317 00	SEAL	AR
•30	1310 4944 70	INSULATION	1
•40	1310 4944 71	INSULATION	2
•50	1615 6967 03	HANDLE	1
•60	0301 2321 00	FLAT WASHER	4
•70	0291 1108 00	LOCKNUT	4
•80	1604 3431 00	HINGE	2
•90	1615 5684 00	BRACKET HINGE RETAINER	2
•100	0216 1324 03	SOCK HEAD SCREW	4
•110	1626 3146 00	PLATE	1
•120	0129 3107 00	RIVET	14
•140	1310 4944 72	PLATE DOOR INLET	1

DOOR ASSEMBLY - STANDARD



REF	PART NUMBER	DESIGNATION	QTY
-	1310 4955 80	DOOR ASSEMBLY (From page 28)	
•10	1310 4955 00	DOOR	1
•20	1604 4317 00	SEAL	AR
•30	1310 4955 70	INSULATION	1
•40	1310 4955 71	INSULATION	1
•50	1615 6967 03	HANDLE	1
•60	1604 3429 00	HINGE	2
•70	1615 5684 00	BRACKET HINGE RETAINER	2
•80	0216 1324 03	SOCK HEAD SCREW	4

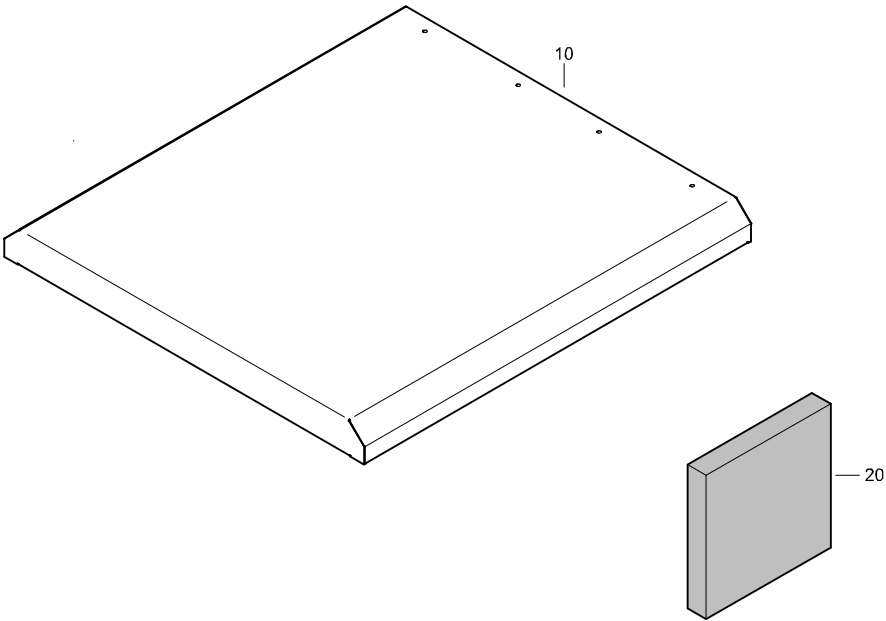
CUBICLE DOOR ASSEMBLY - STANDARD



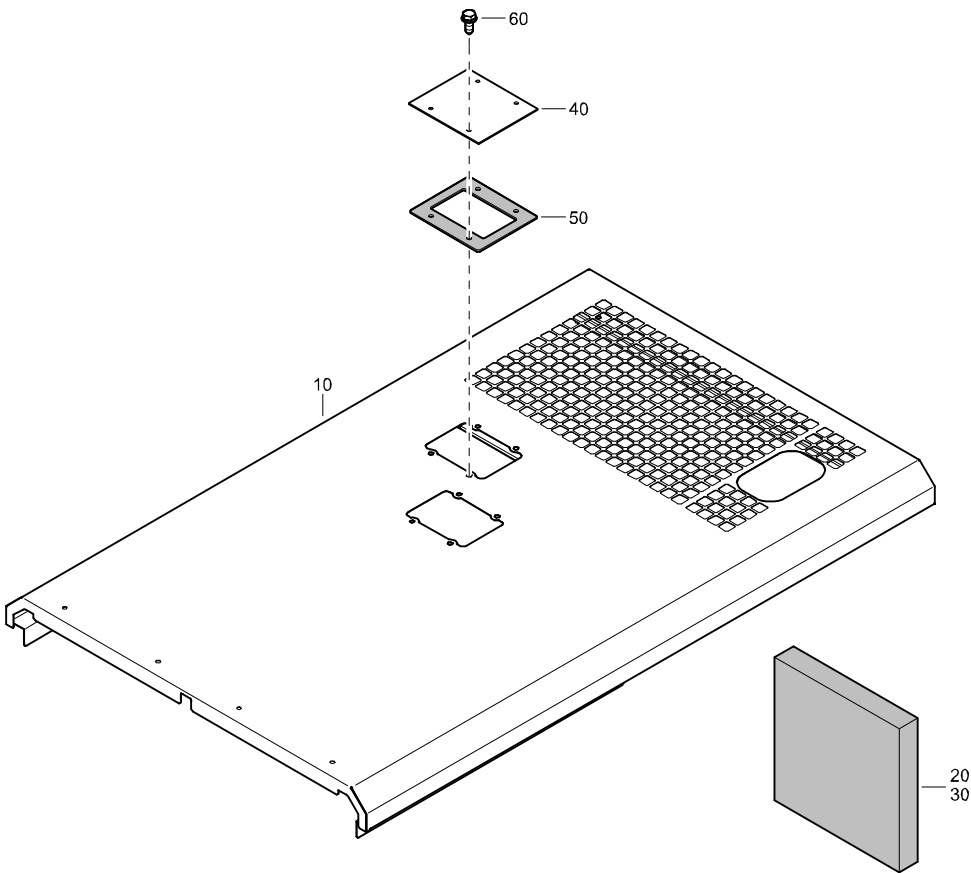
REF	PART NUMBER	DESIGNATION	QTY
—	1310 4960 80	CUBICLE DOOR ASSEMBLY	
•10	1310 4960 00	CUBICLE DOOR	1
•20	1604 4317 00	SEAL	AR
•30	1615 6967 03	HANDLE	1
•40	0301 2321 00	FLAT WASHER	4
•50	0291 1108 00	LOCKNUT	4
•60	1604 3431 00	HINGE	2
•70	1615 5684 00	BRACKET HINGE RETAINER	2
•80	0216 1324 03	SOCK HEAD SCREW	4
•90	1604 4922 00	WINDOW CUBICLE DOOR	1
•100	1604 4541 00	SEAL	1.2

REAR ROOF ASSEMBLY - STANDARD

REF	PART NUMBER	DESIGNATION	QTY
-	1310 4961 80	REAR ROOF ASSEMBLY	(From page 28)
•10	1310 4961 00	REAR ROOF	1
•20	1310 4961 70	INSULATION	2

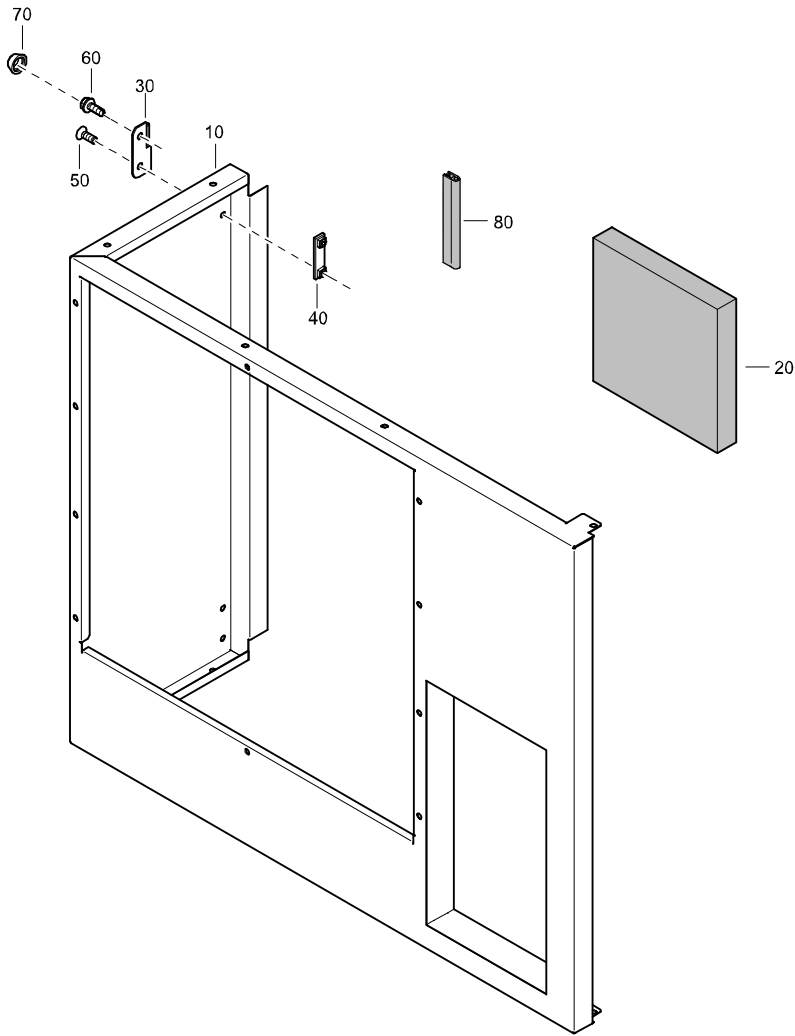


FRONT ROOF ASSEMBLY - STANDARD



REF	PART NUMBER	DESIGNATION	QTY
-	1310 4962 80	FRONT ROOF ASSEMBLY	(From page 28)
•10	1310 4962 00	FRONT ROOF	1
•20	1310 4962 70	INSULATION	1
•30	1310 4962 71	INSULATION	1
•40	1310 4962 72	COVER	2
•50	1310 4962 73	SEAL	2
•60	1619 2766 00	SCRAPPER BOLT	8

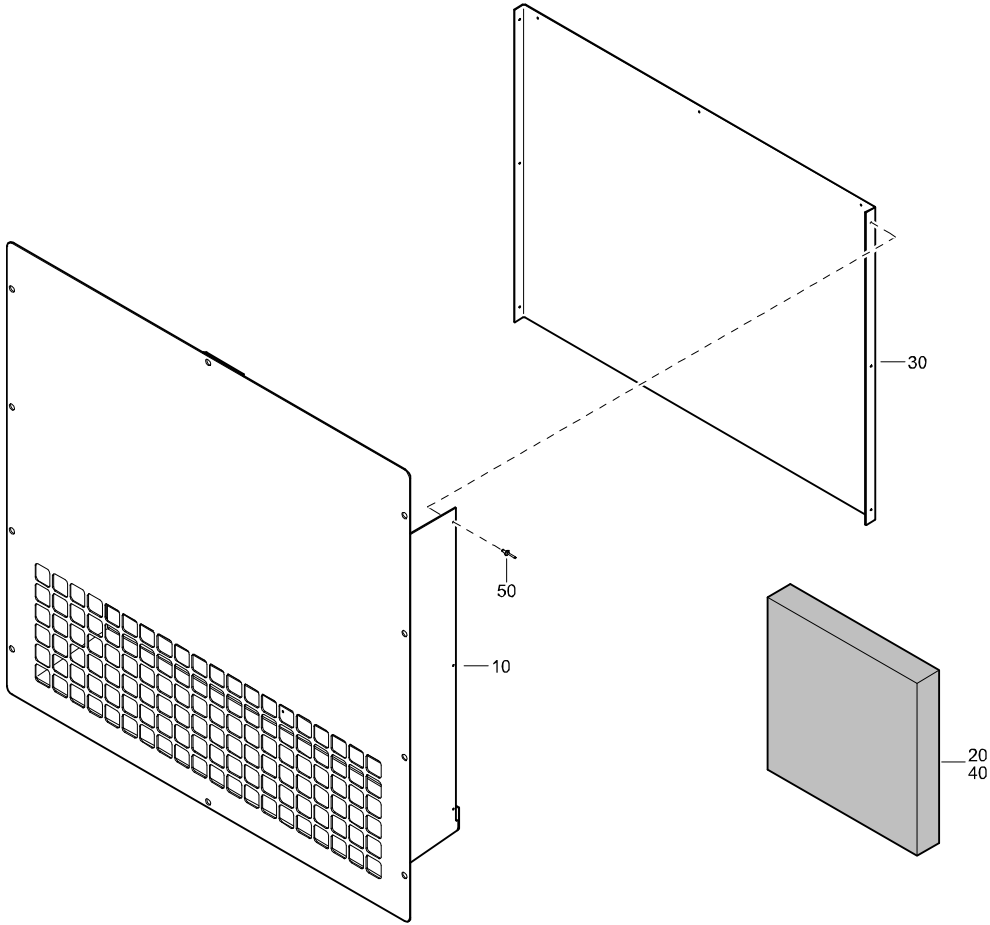
PANEL ASSEMBLY - STANDARD



REF	PART NUMBER	DESIGNATION	QTY
-	1310 4963 80	PANEL ASSEMBLY	(From page 28)
•10	1310 4963 00	PANEL	1
•20	1310 4963 70	INSULATION	1
•30	1604 3430 00	HINGE	2
•40	1615 5684 00	BRACKET	2
•50	0216 1324 03	SCREW	2
•60	1619 2766 00	SCRAPPER BOLT	2
•70	1613 3672 00	CAP BOLT PROTECT	2
•80	1202 6584 00	SEAL-EDGE	AR

PLATE ASSEMBLY - STANDARD

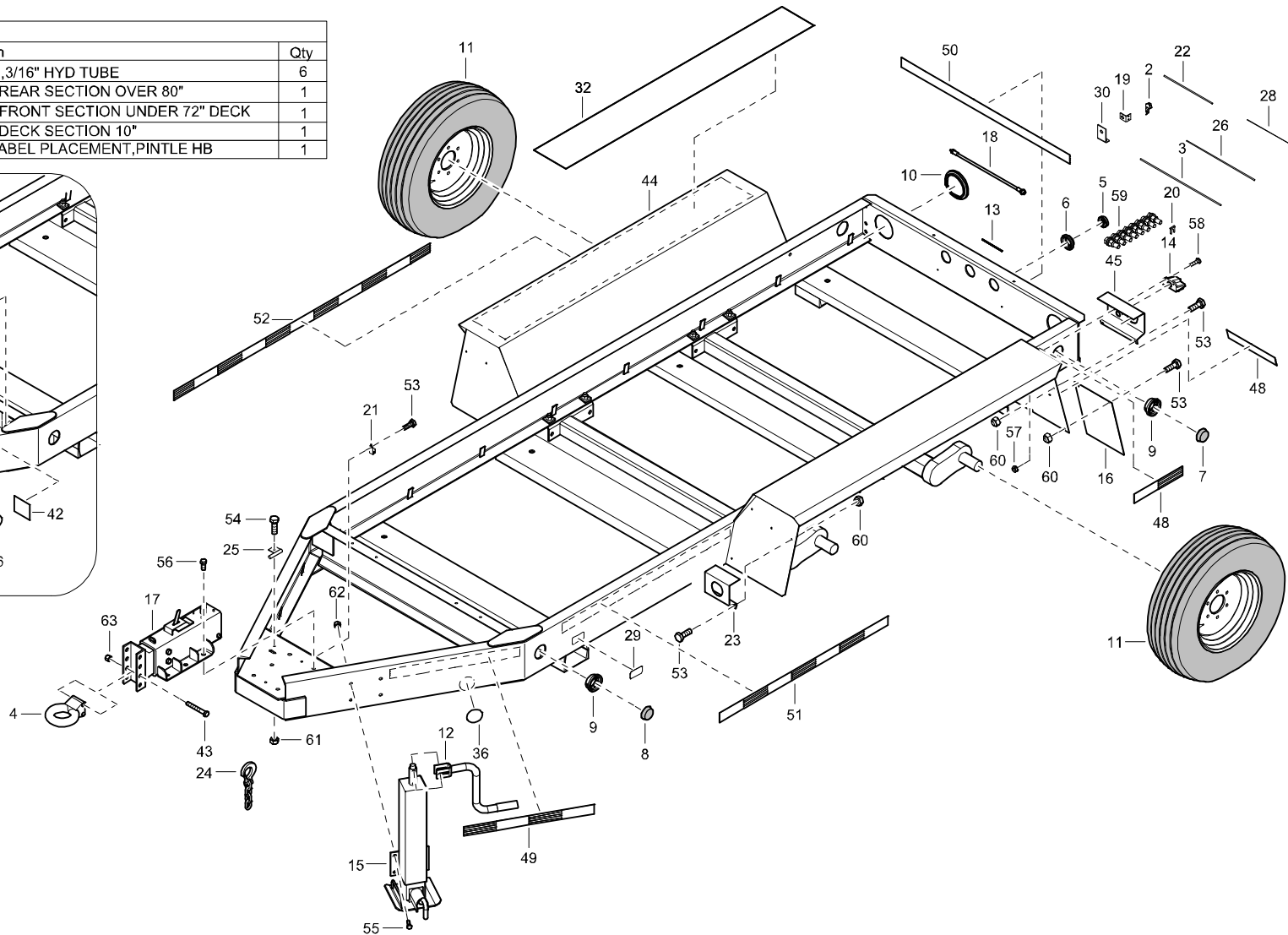
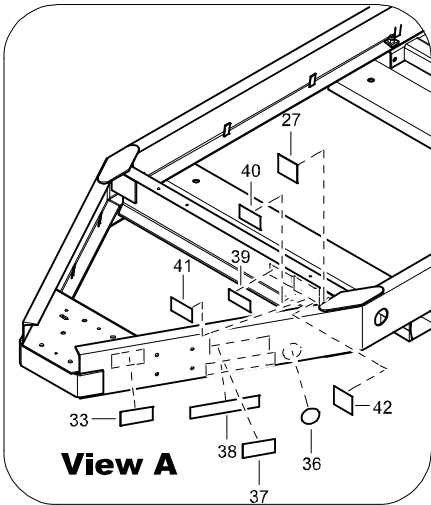
REF	PART NUMBER	DESIGNATION	QTY
-	1310 4964 80	PLATE ASSEMBLY	(From page 28)
•10	1310 4964 00	PLATE	1
•20	1310 4964 70	INSULATION	2
•30	1310 4964 71	PLATE	1
•40	1310 4964 72	INSULATION	1
•50	0129 3107 00	RIVET	9



TRAILER ASSEMBLY - OPTIONS

Not Illustrated

Ref	Part Number	Designation	Qty
1	10042	COUPLING,3/16" HYD TUBE	6
31	41073	HARNESS,REAR SECTION OVER 80"	1
34	42940	HARNESS,FRONT SECTION UNDER 72" DECK	1
35	43492	HARNESS,DECK SECTION 10"	1
64	RDENGA0027	TRAILER LABEL PLACEMENT,PINTLE HB	1



TRAILER ASSEMBLY - OPTIONS

REF	PART NUMBER	DESIGNATION	QTY	REF	PART NUMBER	DESIGNATION	QTY	REF	PART NUMBER	DESIGNATION	QTY
1	10042	COUPLING, 3/16" HYD TUBE	6	32	41132	TAPE, ANTI-SLIP, 8" X 62	2				
2	10044	TEE, 3/16" HYD TUBE.		33	41515	TOW LEVEL DECAL	1				
		W/ BRACKET	2	34	42940	HARNESS, FRONT SECTION					
3	10049	HYD BRAKE TUBE, 3/16" X 20	2			UNDER 72" DECK	1				
4	11191	3" TOWING EYE	1	35	43492	HARNESS, DECK SECTION 10	1				
5	11989	CLEARANCE & MARKER LAMP	3	36	46948	DECAL, NATM COMPLIANCE	1				
6	12034	GROMMET		37	46950	DECAL, NATM COMBO PINTLE HB	1				
		(FOR CLEARANCE LAMP)	3	38	46953	DECAL, TRAILER WARNING					
7	12709	CLEARANCE LIGHT REFLECTOR,				COMBO	1				
		RED	4	39	61191	DECAL, OVERLOAD HAZARD	1				
8	12710	CLEARANCE LIGHT REFLECTOR,		40	61353	TIRE & LOADING INFORMATION					
		YLW	4			LABEL	1				
9	12711	CLEARANCE LIGHT GROMMET		41	61354	TIRE LABEL UV OVERLAY	1				
		KIT	8	42	61357	VIN LABEL	1				
10	12838	SEALED ASY-STOP, TURN /		43	64170	5/8-11 X 4-1/2 HEX HEAD CAP					
		TAIL LIGHT	2			SCREW	2				
11	14479	T&W ASSY, ST225/75R15 LRD	4	44	71897	TRILER W.A.	1				
12	18730	JACK HANDLE	1	45	71920	LIGHT BRACKET	1				
13	18900	HYD BRAKE TUBE, 3/16" X 5	4	48	18823-12	CONSPICUITY TAPE, RED/WHITE	4				
14	24897	LICENSE PLATE LAMP,		49	18823-24	CONSPICUITY TAPE, RED/WHITE	2				
		TRUCK-LITE	1	50	18823-42-R	CONSPICUITY TAPE, RED/WHITE	1				
15	28647	JACK W.A.	1	51	18823-42-W	CONSPICUITY TAPE, RED/WHITE	2				
16	29244	MUD FLAP	2	52	18823-64-R	CONSPICUITY TAPE, RED/WHITE	2				
17	29378	HYD ACTUATOR W.A. 10,000		53	HCS01-01	1/4-20 X 3/4 HEX HEAD CAP					
		GVWR	1			SCREW	12				
18	29634	HOSE, HYD BRAKE - 18	4	54	HCS02-02	5/16-18 X 1 HEX HEAD CAP SCREW	2				
19	29635	HOSE BRACKET , HYD BRAKE	4	55	HCS05-02	1/2-13 X 1-1/2 HEX HEAD CAP					
20	29636	HOSE CLIP, HYD BRAKE	4			SCREW	4				
21	29638	TEE, HYD 3/16" TUBE		56	HCS07-48	5/8-11 X 1-1/2 HEX HEAD CAP					
		BRACKET FLATTENED	1			SCREW	6				
22	30135	HYD BRAKE TUBE, 3/16" X 12	3	57	KHN02	10-24 KEPS NUT	2				
23	30646	LIGHT BRACKET	3	58	MSPH02-04	# 10-24 X 3/4 PHIL PAN HEAD					
24	30930	SAFETY CHAIN 3/8 SYS.4 3/8				MACH SCREW	2				
		CLEVIS HK	2	59	N11-4422	GEN MOUNTIN HARDWARE	1				
25	31032	SAFETY CHAIN ANCHOR W.A.	2	60	NLN01	1/4-20 NYLOC NUT	12				
26	32073	HYD BRAKE TUBE, 3/16" X 17	2	61	NLN02	5/16-18 NYLOC NUT	2				
27	32591	VIN LABEL UV OVERLAY	1	62	NLN05	1/2-13 NYLOC NUT	4				
28	32638	HYD BRAKE TUBE, 3/16" X 104	2	63	NLN07	5/8-11 NYLOC NUT	8				
29	35738	TIE DOWN HERE DECAL	4	64	RDENGA0027	TRAILER LABEL PLACEMENT,					
30	36032	HYD HOSE BRACKET	4			PINTLE HB	1				
31	41073	HARNESS, REAR SECTION									
		OVER 80	1								

