

Parts List
for Portable Generators
English

QAS 150 JD7 IT4 HOP

Engine JD 6068HFG94

QAS 150 JD7 IT4 HOP

Engine JD 6068HFG94

Parts Index 5

Warranty and Liability 7

Ordering Spare Parts 8

Safety Precautions for Portable Generators 9

Parts Lists.....14



PARTS INDEX

PART	PAGE	PART	PAGE	PART	PAGE
A		E		I	
ADAPTER	24, 38	ELBOW	38	INFORMATION LABEL	28
AIR INLET	19	ELBOW PIPE	24	INSERT THD.....	26
ALTERNATOR.....	39	ELECTRICAL SYSTEM	20, 21	ISOLATOR	34
ALTERNATOR ASSEMBLY.....	39	ENGINE	40	INSULATION.....	54
AXEL ASSEMBLY.....	30, 32	ENGINE COOLANT.....	17		
		ENGINE DATA REPORTING	40	K	
B		ENGINE DIESEL	40	KEY	26
BAFFLE ASSEMBLY	26	ENGINE OIL	16		
BALL VALVE.....	38	EXHAUST PIPE.....	22	L	
BAFFLE.....	54	EXHAUST PIPE OUTLET	22	LABEL BECAUSE WE CARE.....	28
BAFFLE ASSEMBLY	26	EXHAUST SHIELD.....	22	LABEL CALIFORNIA EMISSIONS	28
BODYWORK	26, 27	EXHAUST SHIELD SUPPORT	22	LABEL CAUTION HOT EXHAUST.....	28
BREAKER.....	34	EXHAUST SYSTEM	22, 23	LABEL COOLANT.....	28
BRAKE ASSEMBLY	30, 32			LABEL GENUINE PARTS.....	28
		F		LABEL LOGO BLACK	28
C		FILTER FUEL TANK VENT	24	LABEL LOGO WHITE	28
CABLE.....	20	FRAME.....	30	LABEL MODEL DESIGNATION.....	28
CANOPY SET	26	FRAME AND FUEL TANK KIT	26	LABEL NEUTRAL GROUNDED.....	28
CORNER PANEL ASSEMBLY	26, 42, 43	FRAME AND MOUNTS	18	LABEL OIL FILL TYPE.....	28
CORNER PANEL	42, 43	FRONT ROOF ASSEMBLY	26, 51	LABEL OPERATING INSTRUCTION.....	28
COVER.....	51	FRONT ROOF	51	LABEL QAS RELAY FUNCT.....	28
COOLANT DRAIN VALVE	38	FUEL FILTER	14, 15	LABEL QC1001 OPERATING.....	28
COOLER SUPPORT	26	FUEL SYSTEM.....	24, 25	LABEL QC1002 OPERATING INST	28
COOLING SYSTEM.....	36, 37	FUSE.....	34	LABEL SELECTOR SW POSITION	28
CORNER PANEL ASSEMBLY	26	FUSEHOLDER.....	34	LABEL SELECTOR SW VOLTAGES	28
CUBICLE ASSEMBLY.....	34, 35			LABEL SHEET	28
CUBICLE DOOR ASSEMBLY	26, 49	G		LABEL WARNING.....	28
CONNECTOR	34	GROMMET	30	LABEL WARNING ALTERNATOR	28
CONTROLLER	34			LABELS	28, 29, 34
CONTACTOR.....	34	H		LIGHT.....	34
COPPER GND BAR.....	34	HANDLE	45, 46, 48, 49	LIFTING BEAM	26
		HARNESS	30	LIFTING SUPPORT.....	26
D		HINGE	41, 42, 43, 45, 46, 48, 49	LABEL,HAZARDOUS VOLTAGE.....	34
DECAL	30, 34	HOSE	24, 30		
DUCT.....	34	HOSE ASSEMBLY	38	M	
DOCUMENT HOLDER	26	HOSE CLIP.....	1	MANIFOLD SHIELD	22
DOOR ASSEMBLY	26, 45, 46, 48	HOSE CLAMP	24, 38	MAIN BOX WITH ALL PARTS	34
DOOR	45, 46, 48, 49	HOUSING CONNECTOR	34	METER	34
DRAINS.....	38				

PARTS INDEX

PART	PAGE	PART	PAGE	PART	PAGE
MUFFLER	22	T			
MONITOR, CURRENT	34	TRANSFORMER	34		
		TUBE	38		
O		TUBE FUEL INLET/OUTLET	24		
OIL FILTER	14, 15	TERMINAL	34		
		TERMINAL ASSEMBLY	34		
P		V			
PANEL ASSEMBLY	26	VALVE	24		
P		V-BAND CLAMP	22		
PANEL ASSEMBLY FUEL FILL	26, 41	VOLTAGE SELECT	39		
PANEL FUEL FILL	41				
PARCOOL EG	17	W			
PAROIL E	16	WIRE SET	39		
POTENTIOMETER	34	WIRING SINGLE BREAKER	34		
PLATE	26, 46, 53				
PLATE ASSEMBLY	26, 53, 54				
PLATE DOOR INLET	46				
PLATE LIFTING SUPPORT	26				
PLUG	34, 38				
Q					
QUICK COUPLING	24				
R					
RAIN CAP	22, 26				
RELAY	34				
RECEPTACLE	34				
REAR ROOF ASSEMBLY	26, 50				
S					
SADDLE CLAMP	22				
SELECTOR SWITCH	39				
SEAL	54				
SERVICE PAK	14, 15				
SERVICE PANEL ASSEMBLY	26, 44				
SOCKET	34				
SUPPORT	26				
SHUNT TRIP	34				
SWITCH	34				

INSTRUCTION MANUAL

Warranty and Liability Limitation

Use only authorized parts.

Any damage or malfunction caused by the use of unauthorized parts is not covered by Warranty or Product Liability.

The manufacturer does not accept any liability for any damage arising for modifications, additions or conversions made without the manufacturer's approval in writing.

Copyright 2012, Atlas Copco Compressors LLC, RockHill SC USA.

Any unauthorized use or copying of the contents or any part thereof is prohibited.

This applies in particular to trademarks, model denominations, part numbers and drawings

Limitation de garantie et de responsabilité

Utiliser uniquement les pièces homologuées.

Tout dommage ou mauvais fonctionnement dû à l'utilisation de pièces non homologuées n'est pas couvert par la garantie ou la responsabilité des produits défectueux.

Le fabricant décline toute responsabilité en cas de dommage faisant suite à des modifications, des ajouts ou des conversions effectués sans l'accord écrit du fabricant.

Copyright 2012, Atlas Copco Compressors LLC, RockHill SC USA.

Toute utilisation ou copie du contenu, ou d'une partie de celui-ci, non autorisée est interdite.

Cette interdiction s'applique en particulier aux marques de commerce, aux dénominations des modèles, aux numéros des pièces et aux schémas.

Limitación de garantía y responsabilidad

Use sólo piezas autorizadas.

La garantía o responsabilidad del producto no cubre ningún daño o funcionamiento defectuoso provocado por el uso de piezas no autorizadas.

El fabricante no acepta ninguna responsabilidad por los daños provocados por modificaciones, adiciones o conver-

siones realizadas sin la aprobación por escrito del fabricante.

Derechos de reproducción 2012, Atlas Copco Compressors LLC, RockHill SC USA.

Está prohibida toda utilización o reproducción total o parcial no autorizada de estos contenidos, en especial de las marcas registradas, denominaciones de modelos, números de piezas y planos

ORDERING SPARE PARTS

ORDERING SPARE PARTS

Always quote the part number, the designation and the quantity of the parts required, as well as the type and the serial number of the machine.

EXPLANATION OF THE COLUMNS

REF : REFERENCE CODE

Establishes the connection between a part in the list and a part in the illustration.

"—" means that the part is not shown in the illustration.

PART NUMBER

If no part number is given, the part cannot be obtained as a spare part.

Parts marked with a dot are part of the assembly listed right above them.

DESIGNATION

Usually this is the name of the part. For standard parts, in addition to the name, a number of characteristics are given.

QTY : QUANTITY

Indicates the quantity of the part concerned. "AR" stands for "As Required".

COMMANDE DE PIÈCES DETACHEES

Toujours indiquer le numéro de pièce, la désignation, la quantité désirée ainsi que le type et le numéro de série du groupe.

EXPLICATION DES INTITULES DES COLONNES

REF : CODE DE REFERENCE

Réfère à la pièce détachée spécifiée dans la liste et sur l'illustration. "—" implique que la pièce n'est pas indiquée sur l'illustration.

PART NUMBER : NUMERO DE PIECE DETACHEE

Si le numéro n'est pas indiqué, la pièce n'est pas disponible en tant que pièce de rechange.

Les pièces indiquées par un point gras font partie de l'ensemble se trouvant au-dessus des pièces détachées correspondantes.

DESIGNATION

En général, le nom de la pièce. S'il s'agit de pièces standard, outre la désignation, un certain nombre de caractéristiques sont indiquées.

QTY : QUANTITE

Indique la quantité de la pièce détachée. "AR" indique "As required", c'est-à-dire la quantité à déterminer selon le cas.

PEDIDO DE PARTES

Siempre comunicar el número de parte, la designación y la cantidad deseada así como el tipo y el número de serie de la máquina.

INFORMACIONES SOBRE LAS COLUMNAS

REF : CODIGO DE REFERENCIA

Establece la conexión entre una parte en la lista y una parte en la ilustración.

"—" quiere decir que la parte no está ilustrada.

PART NUMBER : NUMERO DE PARTE

Si no se da ningún número, quiere decir que la parte no está disponible como parte de recambio.

Partes marcadas con un punto son partes del conjunto indicado más arriba.

DESIGNATION : DESIGNACION

Principalmente el nombre de la parte. En caso de partes estándares, el nombre es seguido por especificaciones.

QTY : CANTIDAD

Indica la cantidad de la parte correspondiente. La indicación "AR" significa "As Required" (como sea requerido).

SAFETY PRECAUTIONS FOR PORTABLE GENERATORS

To be read attentively and acted accordingly before towing, lifting, operating, performing maintenance or repairing the generator

0.1 INTRODUCTION

The policy of Atlas Copco is to provide the users of their equipment with safe, reliable and efficient products. Factors taken into account are among others:

- the intended and predictable future use of the products, and the environments in which they are expected to operate,
- applicable rules, codes and regulations,
- the expected useful product life, assuming proper service and maintenance,
- providing the manual with up-to-date information.

Before handling any product, take time to read the relevant instruction manual. Besides giving detailed operating instructions, it also gives specific information about safety, preventive maintenance, etc.

Keep the manual always at the unit location, easy accessible to the operating personnel.

See also the safety precautions of the engine and possible other equipment, which are separately sent along or are mentioned on the equipment or parts of the unit.

These safety precautions are general and some statements will therefore not always apply to a particular unit.

Only people that have the right skills should be allowed to operate, adjust, perform maintenance or repair on Atlas Copco equipment. It is the responsibility of management to appoint operators with the appropriate training and skill for each category of job.

Skill level 1: Operator

An operator is trained in all aspects of operating the unit with the push-buttons, and is trained to know the safety aspects.

Skill level 2: Mechanical technician

A mechanical technician is trained to operate the unit the same as the operator. In addition, the mechanical technician is also trained to perform maintenance and repair, as described in the instruction manual, and is allowed to change settings of the control and safety system. A mechanical technician does not work on live electrical components.

Skill level 3: Electrical technician

An electrical technician is trained and has the same

qualifications as both the operator and the mechanical technician. In addition, the electrical technician may carry out

electrical repairs within the various enclosures of the unit. This includes work on live electrical components.

Skill level 4: Specialist from the manufacturer

This is a skilled specialist sent by the manufacturer or its agent to perform complex repairs or modifications to the equipment.

In general it is recommended that not more than two people operate the unit, more operators could lead to unsafe operating conditions. Take necessary steps to keep unauthorized persons away from the unit and eliminate all possible sources of danger at the unit.

When handling, operating, overhauling and/or performing maintenance or repair on Atlas Copco equipment, the mechanics are expected to use safe engineering practices and to observe all relevant local safety requirements and ordinances. The following list is a reminder of special safety directives and precautions mainly applicable to Atlas Copco equipment.

Neglecting the safety precautions may endanger people as well as environment and machinery:

- endanger people due to electrical, mechanical or chemical influences,
- endanger the environment due to leakage of oil, solvents or other substances,
- endanger the machinery due to function failures.

All responsibility for any damage or injury resulting from neglecting these precautions or by non-observance of ordinary caution and due care required in handling, operating, maintenance or repair, also if not expressly mentioned in this instruction manual, is disclaimed by Atlas Copco.

The manufacturer does not accept any liability for any damage arising from the use of non-original parts and for modifications, additions or conversions made without the manufacturer's approval in writing.

If any statement in this manual does not comply with local legislation, the stricter of the two shall be applied.

Statements in these safety precautions should not be interpreted as suggestions, recommendations or inducements that it should be used in violation of any

applicable laws or regulations.

0.2 GENERAL SAFETY PRECAUTIONS

- 1 The owner is responsible for maintaining the unit in a safe operating condition. Unit parts and accessories must be replaced if missing or unsuitable for safe operation.
- 2 The supervisor, or the responsible person, shall at all times make sure that all instructions regarding machinery and equipment operation and maintenance are strictly followed and that the machines with all accessories and safety devices, as well as the consuming devices, are in good repair, free of abnormal wear or abuse, and are not tampered with.
- 3 Whenever there is an indication or any suspicion that an internal part of a machine is overheated, the machine shall be stopped but no inspection covers shall be opened before sufficient cooling time has elapsed; this to avoid the risk of spontaneous ignition of oil vapour when air is admitted.
- 4 Normal ratings (pressures, temperatures, speeds, etc.) shall be durably marked.
- 5 Operate the unit only for the intended purpose and within its rated limits (pressure, temperature, speeds, etc.).
- 6 The machinery and equipment shall be kept clean, i.e. as free as possible from oil, dust or other deposits.
- 7 To prevent an increase in working temperature, inspect and clean heat transfer surfaces (cooler fins, intercoolers, water jackets, etc.) regularly. See the maintenance schedule.
- 8 All regulating and safety devices shall be maintained with due care to ensure that they function properly. They may not be put out of action.
- 9 Pressure and temperature gauges shall be checked regularly with regard to their accuracy. They shall be replaced whenever outside acceptable tolerances.
- 10 Safety devices shall be tested as described in the maintenance schedule of the instruction manual to determine that they are in good operating condition.
- 11 Mind the markings and information labels on the unit.
- 12 In the event the safety labels are damaged or destroyed, they must be replaced to ensure operator safety.

- 13 Keep the work area neat. Lack of order will increase the risk of accidents.
- 14 When working on the unit, wear safety clothing. Depending on the kind of activities these are: safety glasses, ear protection, safety helmet (including visor), safety gloves, protective clothing, safety shoes. Do not wear the hair long and loose (protect long hair with a hairnet), or wear loose clothing or jewelry.
- 15 Take precautions against fire. Handle fuel, oil and anti-freeze with care because they are inflammable substances. Do not smoke or approach with naked flame when handling such substances. Keep a fire-extinguisher in the vicinity.
- 16a **Portable generators (with earthing pin):**
Earth the generator as well as the load properly.
- 16b **Portable generators IT:**
Note: This generator is built to supply a sheer alternating current IT network.
Earth the load properly.

0.3 SAFETY DURING TRANSPORT AND INSTALLATION

To lift a unit, all loose or pivoting parts, e.g. doors and towbar, shall first be securely fastened.

Do not attach cables, chains or ropes directly to the lifting eye; apply a crane hook or lifting shackle meeting local safety regulations. Never allow sharp bends in lifting cables, chains or ropes.

Helicopter lifting is not allowed.

It is strictly forbidden to dwell or stay in the risk zone under a lifted load. Never lift the unit over people or residential areas. Lifting acceleration and retardation shall be kept within safe limits.

- 1 Before towing the unit:
 - check the towbar, the brake system and the towing eye. Also check the coupling of the towing vehicle,
 - check the towing and brake capability of the towing vehicle,
 - check that the towbar, jockey wheel or stand leg is safely locked in the raised position,
 - ascertain that the towing eye can swivel freely on the hook,
 - check that the wheels are secure and that the tyres are in good condition and inflated correctly,
 - connect the signalisation cable, check all lights and connect the pneumatic brake couplers,
 - attach the safety break-away cable or safety chain to the towing vehicle,
 - remove wheel chocks, if applied, and disengage the parking brake.
- 2 To tow a unit use a towing vehicle of ample capacity. Refer to the documentation of the towing vehicle.
- 3 If the unit is to be backed up by the towing vehicle, disengage the overrun brake mechanism (if it is not an automatic mechanism).
- 4 Never exceed the maximum towing speed of the unit (mind the local regulations).
- 5 Place the unit on level ground and apply the parking brake before disconnecting the unit from the towing vehicle. Unclip the safety break-away cable or safety chain. If the unit has no parking brake or jockey wheel, immobilize the unit by placing chocks in front of and/or behind the wheels. When the towbar can be positioned vertically, the locking device must be applied and kept

in good order.

- 6 To lift heavy parts, a hoist of ample capacity, tested and approved according to local safety regulations, shall be used.
- 7 Lifting hooks, eyes, shackles, etc., shall never be bent and shall only have stress in line with their design load axis. The capacity of a lifting device diminishes when the lifting force is applied at an angle to its load axis.
- 8 For maximum safety and efficiency of the lifting apparatus all lifting members shall be applied as near to perpendicular as possible. If required, a lifting beam shall be applied between hoist and load.
- 9 Never leave a load hanging on a hoist.
- 10 A hoist has to be installed in such a way that the object will be lifted perpendicular. If that is not possible, the necessary precautions must be taken to prevent load-swinging, e.g. by using two hoists, each at approximately the same angle not exceeding 30° from the vertical.
- 11 Locate the unit away from walls. Take all precautions to ensure that hot air exhausted from the engine and driven machine cooling systems cannot be recirculated. If such hot air is taken in by the engine or driven machine cooling fan, this may cause overheating of the unit; if taken in for combustion, the engine power will be reduced.
- 12 Generators shall be stalled on an even, solid floor, in a clean location with sufficient ventilation. If the floor is not level or can vary in inclination, consult Atlas Copco.
- 13 The electrical connections shall correspond to local codes. The machines shall be earthed and protected against short circuits by fuses or circuit breakers.
- 14 Never connect the generator outlets to an installation which is also connected to a public mains.
- 15 Before connecting a load, switch off the corresponding circuit breaker, and check whether frequency, voltage, current and power factor comply with the ratings of the generator.

0.4 SAFETY DURING USE AND OPERATION

- 1 When the unit has to operate in a fire-hazardous environment, each engine exhaust has to be provided with a spark arrestor to trap incendiary sparks.
- 2 The exhaust contains carbon monoxide which is a lethal gas. When the unit is used in a confined space, conduct the engine exhaust to the outside atmosphere by a pipe of sufficient diameter; do this in such a way that no extra back pressure is created for the engine. If necessary, install an extractor. Observe any existing local regulations. Make sure that the unit has sufficient air intake for operation. If necessary, install extra air intake ducts.
- 3 When operating in a dust-laden atmosphere, place the unit so that dust is not carried towards it by the wind. Operation in clean surroundings considerably extends the intervals for cleaning the air intake filters and the cores of the coolers.
- 4 Never remove a filler cap of the cooling water system of a hot engine. Wait until the engine has sufficiently cooled down.
- 5 Never refill fuel while the unit is running, unless otherwise stated in the Atlas Copco Instruction Book (AIB). Keep fuel away from hot parts such as air outlet pipes or the engine exhaust. Do not smoke when fuelling. When fuelling from an automatic pump, an earthing cable should be connected to the unit to discharge static electricity. Never spill nor leave oil, fuel, coolant or cleansing agent in or around the unit.
- 6 All doors shall be shut during operation so as not to disturb the cooling air flow inside the bodywork and/or render the silencing less effective. A door should be kept open for a short period only e.g. for inspection or adjustment.
- 7 Periodically carry out maintenance works according to the maintenance schedule.
- 8 Stationary housing guards are provided on all rotating or reciprocating parts not otherwise protected and which may be hazardous to personnel. Machinery shall never be put into operation, when such guards have been removed, before the guards are securely reinstalled.
- 9 Noise, even at reasonable levels, can cause irritation and disturbance which, over a long period of time, may cause severe injuries to the nervous system of human beings.
When the sound pressure level, at any point where

- personnel normally has to attend, is:
- below 70 dB(A):no action needs to be taken,
above 70 dB(A):noise-protective devices should be provided for people continuously being present in the room,
- below 85 dB(A):no action needs to be taken for occasional visitors staying a limited time only,
above 85 dB(A):room to be classified as a noise-hazardous area and an obvious warning shall be placed permanently at each entrance to alert people entering the room, for even relatively short times, about the need to wear ear protectors,
above 95 dB(A):the warning(s) at the entrance(s) shall be completed with the recommendation that also occasional visitors shall wear ear protectors,
above 105 dB(A):special ear protectors that are adequate for this noise level and the spectral composition of the noise shall be provided and a special warning to that effect shall be placed at each entrance.
- 10 Insulation or safety guards of parts the temperature of which can be in excess of 80 °C (175 °F) and which may be accidentally touched by personnel shall not be removed before the parts have cooled to room temperature.
 - 11 Never operate the unit in surroundings where there is a possibility of taking in flammable or toxic fumes.
 - 12 If the working process produces fumes, dust or vibration hazards, etc., take the necessary steps to eliminate the risk of personnel injury.
 - 13 When using compressed air or inert gas to clean down equipment, do so with caution and use the appropriate protection, at least safety glasses, for the operator as well as for any bystander. Do not apply compressed air or inert gas to your skin or direct an air or gas stream at people. Never use it to clean dirt from your clothes.
 - 14 When washing parts in or with a cleaning solvent, provide the required ventilation and use appropriate protection such as a breathing filter, safety glasses, rubber apron and gloves, etc.
 - 15 Safety shoes should be compulsory in any workshop and if there is a risk, however small, of falling objects, wearing of a safety helmet should be included.
 - 16 If there is a risk of inhaling hazardous gases, fumes or dust, the respiratory organs must be protected and depending on the nature of the hazard, so must the eyes and skin.
 - 17 Remember that where there is visible dust, the finer,

- invisible particles will almost certainly be present too; but the fact that no dust can be seen is not a reliable indication that dangerous, invisible dust is not present in the air.
- 18 Never operate the generator in excess of its limits as indicated in the technical specifications and avoid long no-load sequences.
 - 19 Never operate the generator in a humid atmosphere. Excessive moisture causes worsening of the generator insulation.
 - 20 Do not open electrical cabinets, cubicles or other equipment while voltage is supplied. If such cannot be avoided, e.g. for measurements, tests or adjustments, have the action carried out by a qualified electrician only, with appropriate tools, and ascertain that the required bodily protection against electrical hazards is applied.
 - 21 Never touch the power terminals during operation of the machine.
 - 22 Whenever an abnormal condition arises, e.g. excessive vibration, noise, odour, etc., switch the circuit breakers to OFF and stop the engine. Correct the faulty condition before restarting.
 - 23 Check the electric cables regularly. Damaged cables and insufficient lightening of connections may cause electric shocks. Whenever damaged wires or dangerous conditions are observed, switch the circuit breakers to OFF and stop the engine. Replace the damaged wires or correct the dangerous condition before restarting. Make sure that all electric connections are securely tightened.
 - 24 Avoid overloading the generator. The generator is provided with circuit breakers for overload protection. When a breaker has tripped, reduce the concerned load before restarting.
 - 25 If the generator is used as stand-by for the mains supply, it must not be operated without control system which automatically disconnects the generator from the mains when the mains supply is restored.
 - 26 Never remove the cover of the output terminals during operation. Before connecting or disconnecting wires, switch off the load and the circuit breakers, stop the machine and make sure that the machine cannot be started inadvertently or there is any residual voltage on the power circuit.
 - 27 Running the generator at low load for long periods will reduce the lifetime of the engine.

0.5 SAFETY DURING MAINTENANCE AND REPAIR

Maintenance, overhaul and repair work shall only be carried out by adequately trained personnel; if required, under supervision of someone qualified for the job.

- 1 Use only the correct tools for maintenance and repair work, and only tools which are in good condition.
- 2 Parts shall only be replaced by genuine Atlas Copco replacement parts.
- 3 All maintenance work, other than routine attention, shall only be undertaken when the unit is stopped. Steps shall be taken to prevent inadvertent starting. In addition, a warning sign bearing a legend such as "work in progress; do not start" shall be attached to the starting equipment.
On engine-driven units the battery shall be disconnected and removed or the terminals covered by insulating caps.
On electrically driven units the main switch shall be locked in open position and the fuses shall be taken out. A warning sign bearing a legend such as "work in progress; do not supply voltage" shall be attached to the fuse box or main switch.
- 4 Prior to stripping an engine or other machine or undertaking major overhaul on it, prevent all movable parts from rolling over or moving.
- 5 Make sure that no tools, loose parts or rags are left in or on the machine. Never leave rags or loose clothing near the engine air intake.
- 6 Never use flammable solvents for cleaning (fire-risk).
- 7 Take safety precautions against toxic vapours of cleaning liquids.
- 8 Never use machine parts as a climbing aid.
- 9 Observe scrupulous cleanliness during maintenance and repair. Keep away dirt, cover the parts and exposed openings with a clean cloth, paper or tape.
- 10 Never weld on or perform any operation involving heat near the fuel or oil systems. Fuel and oil tanks must be completely purged, e.g. by steam-cleaning, before carrying out such operations. Never weld on, or in any way modify, pressure vessels. Disconnect the alternator cables during arc welding on the unit.
- 11 Support the towbar and the axle(s) securely if working underneath the unit or when removing a wheel. Do not

rely on jacks.

- 12 Do not remove any of, or tamper with, the sound-damping material. Keep the material free of dirt and liquids such as fuel, oil and cleansing agents. If any sound-damping material is damaged, replace it to prevent the sound pressure level from increasing.
- 13 Use only lubricating oils and greases recommended or approved by Atlas Copco or the machine manufacturer. Ascertain that the selected lubricants comply with all applicable safety regulations, especially with regard to explosion or fire-risk and the possibility of decomposition or generation of hazardous gases. Never mix synthetic with mineral oil.
- 14 Protect the engine, alternator, air intake filter, electrical and regulating components, etc., to prevent moisture ingress, e.g. when steam-cleaning.
- 15 When performing any operation involving heat, flames or sparks on a machine, the surrounding components shall first be screened with non-flammable material.
- 16 Never use a light source with open flame for inspecting the interior of a machine.
- 17 When repair has been completed, the machine shall be barred over at least one revolution for reciprocating machines, several revolutions for rotary ones to ensure that there is no mechanical interference within the machine or driver. Check the direction of rotation of electric motors when starting up the machine initially and after any alteration to the electrical connection(s) or switch gear, to check that the oil pump and the fan function properly.
- 18 Maintenance and repair work should be recorded in an operator's logbook for all machinery. Frequency and nature of repairs can reveal unsafe conditions.
- 19 When hot parts have to be handled, e.g. shrink fitting, special heat-resistant gloves shall be used and, if required, other body protection shall be applied.
- 20 When using cartridge type breathing filter equipment, ascertain that the correct type of cartridge is used and that its useful service life is not surpassed.
- 21 Make sure that oil, solvents and other substances likely to pollute the environment are properly disposed of.
- 22 Before clearing the generator for use after maintenance or overhaul, submit it to a testrun, check that the AC power performance is correct and that the control and shutdown devices function correctly.

0.6 TOOL APPLICATIONS SAFETY

Apply the proper tool for each job. With the knowledge of correct tool use and knowing the limitations of tools, along with some common sense, many accidents can be prevented.

Special service tools are available for specific jobs and should be used when recommended. The use of these tools will save time and prevent damage to parts.

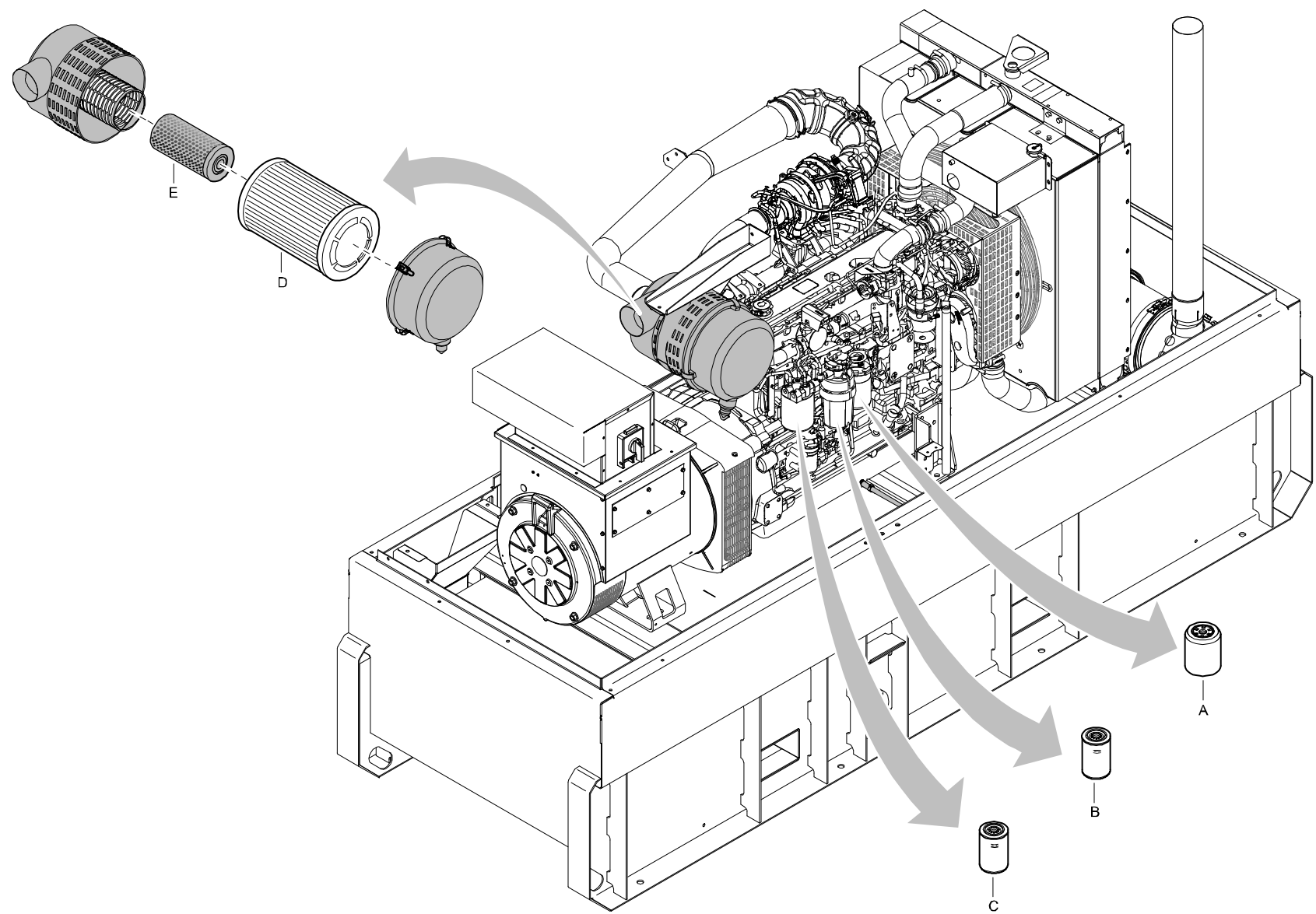
0.7 SPECIFIC SAFETY PRECAUTIONS

Batteries

When servicing batteries, always wear protecting clothing and glasses.

- 1 The electrolyte in batteries is a sulphuric acid solution which is fatal if it hits your eyes, and which can cause burns if it contacts your skin. Therefore, be careful when handling batteries, e.g. when checking the charge condition.
- 2 Install a sign prohibiting fire, open flame and smoking at the post where batteries are being charged.
- 3 When batteries are being charged, an explosive gas mixture forms in the cells and might escape through the vent holes in the plugs.
Thus an explosive atmosphere may form around the battery if ventilation is poor, and can remain in and around the battery for several hours after it has been charged. Therefore:
 - never smoke near batteries being, or having recently been, charged,
 - never break live circuits at battery terminals, because a spark usually occurs.
- 4 When connecting an auxiliary battery (AB) in parallel to the unit battery (CB) with booster cables: connect the + pole of AB to the + pole of CB, then connect the - pole of CB to the mass of the unit. Disconnect in the reverse order.

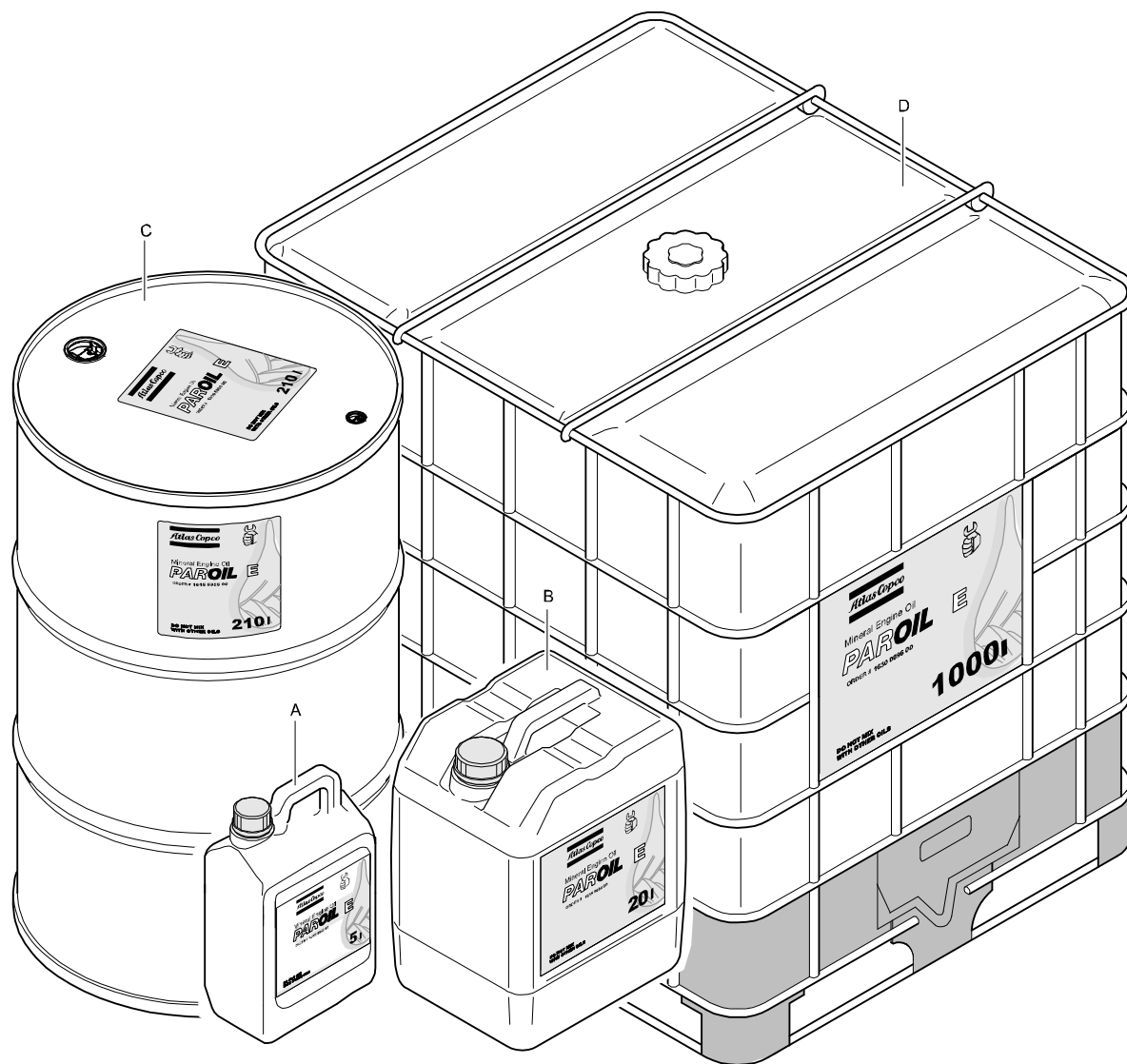
SERVICE PAK



SERVICE PAK

REF	PART NUMBER	DESIGNATION	QTY	REF	PART NUMBER	DESIGNATION	QTY	REF	PART NUMBER	DESIGNATION	QTY
-	1310 3130 83	SERVICE PAK 500H									
•A	-	OIL FILTER	1								
•B	-	FUEL FILTER	1								
•C	-	FUEL FILTER	1								
•D	-	AIRFILTER ELEMENT	1								
•E	-	SAFETY CARTRIDGE	1								

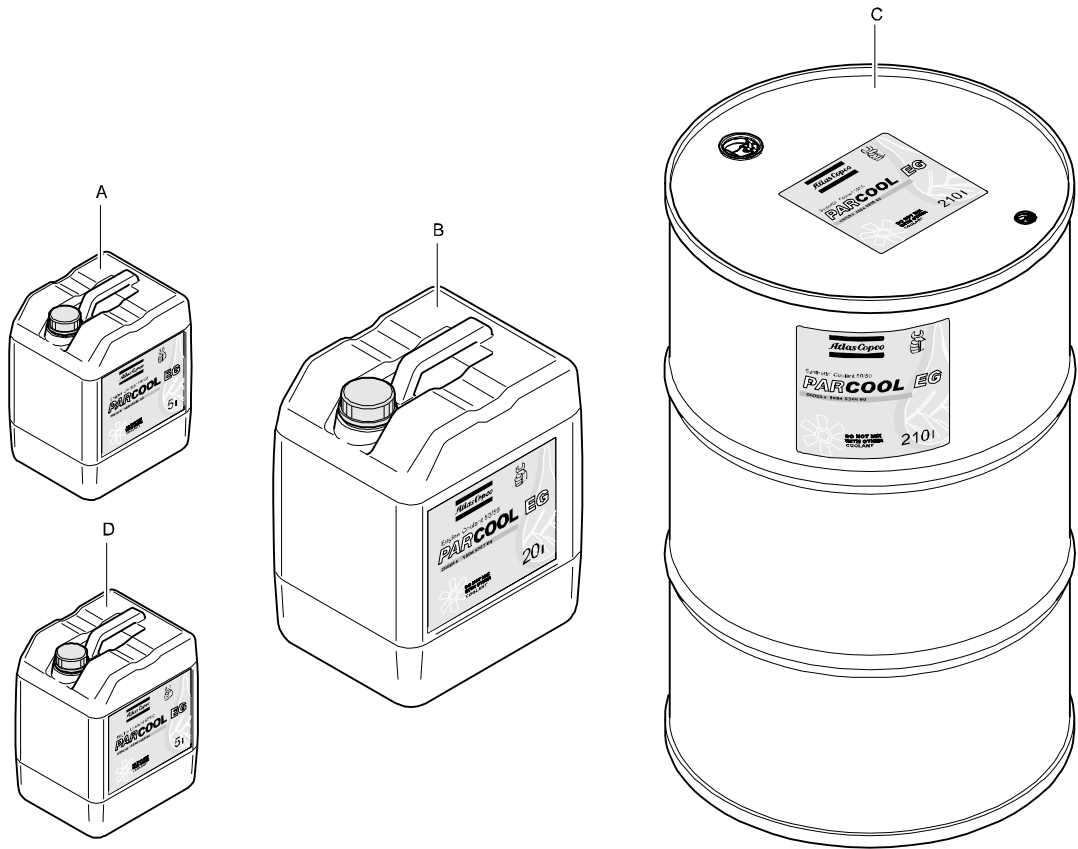
ENGINE OIL - PAROIL E



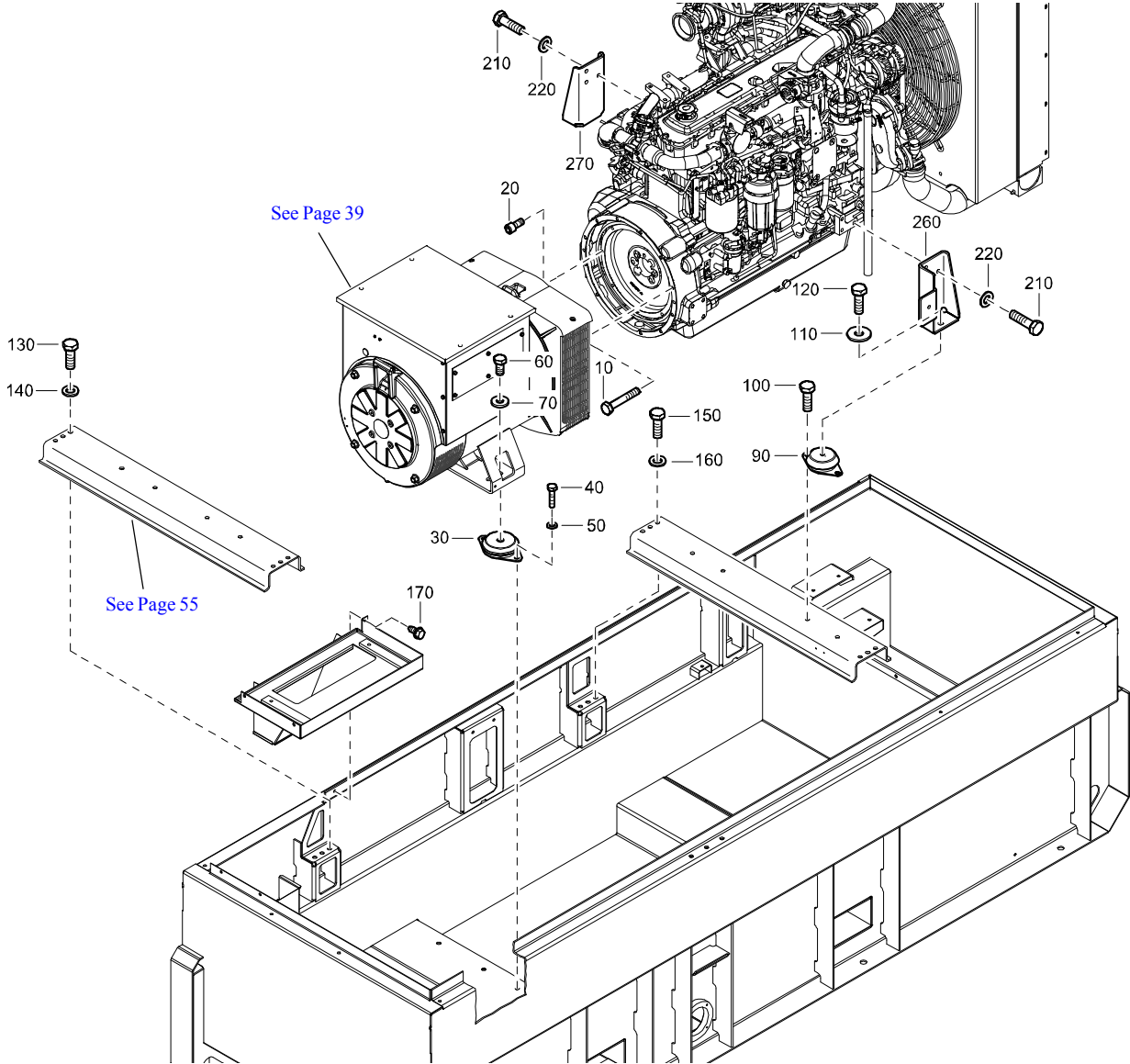
REF	PART NUMBER	DESIGNATION	QTY
A	1615 5953 00	OIL CAN 5 L	1
B	1615 5954 00	OIL CAN 20 L	1
C	1615 5955 00	STEEL DRUM 209 L	1
D	1630 0096 00	CONTAINER 1000 L	1

ENGINE COOLANT - PARCOOL EG

REF	PART NUMBER	DESIGNATION	QTY
A	1604 5308 00	1.3 - GALLON (5 LITER) CONTAINER	1
B	1604 5307 01	5.3 - GALLON (20 LITER) PAIL	1
C	1604 5306 00	55 GALLON (209 LITER) DRUM	1
D	1604 8159 00	CONCENTRATE 5 LITER CAN	1

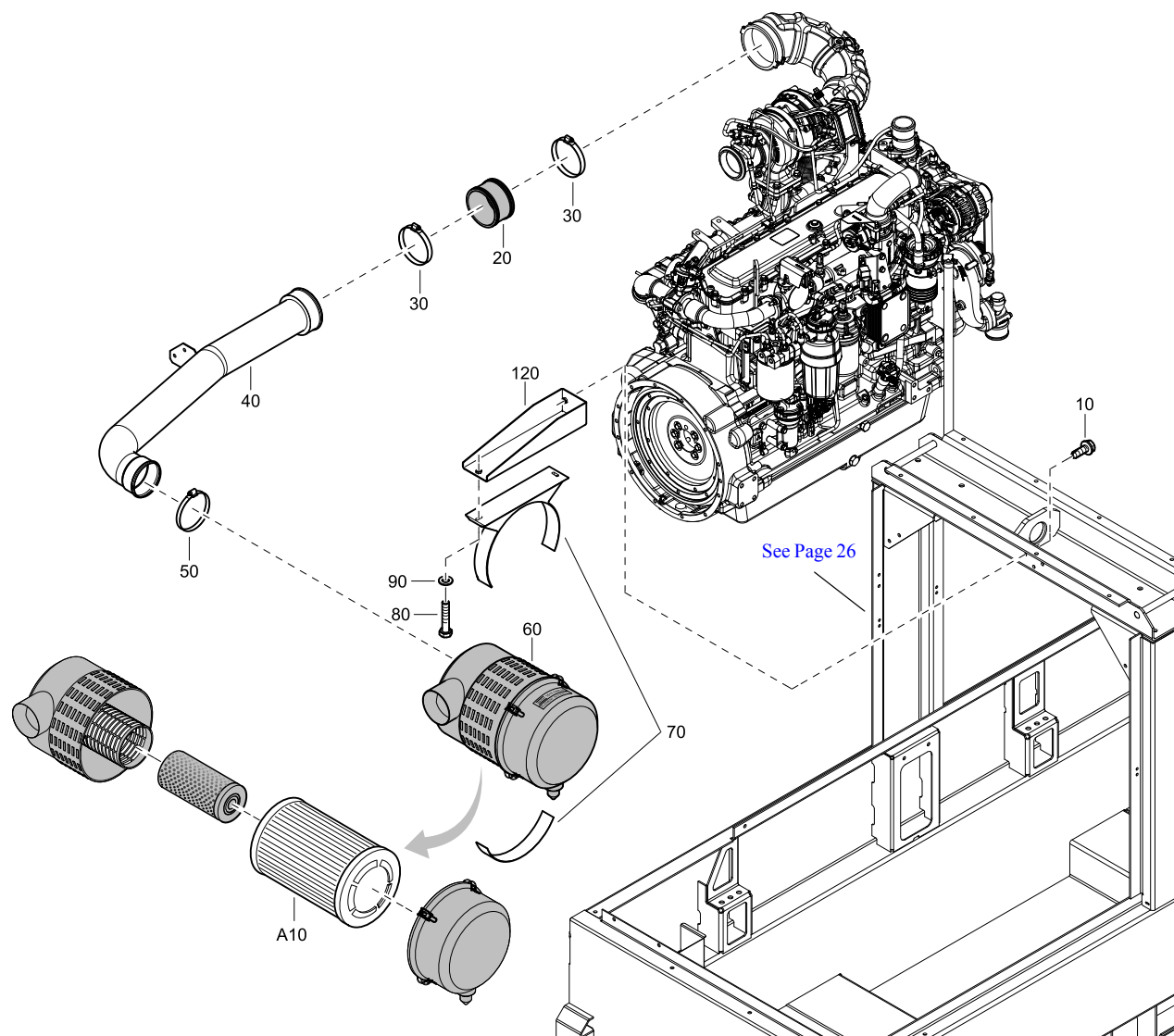


FRAME AND MOUNTS - STANDARD

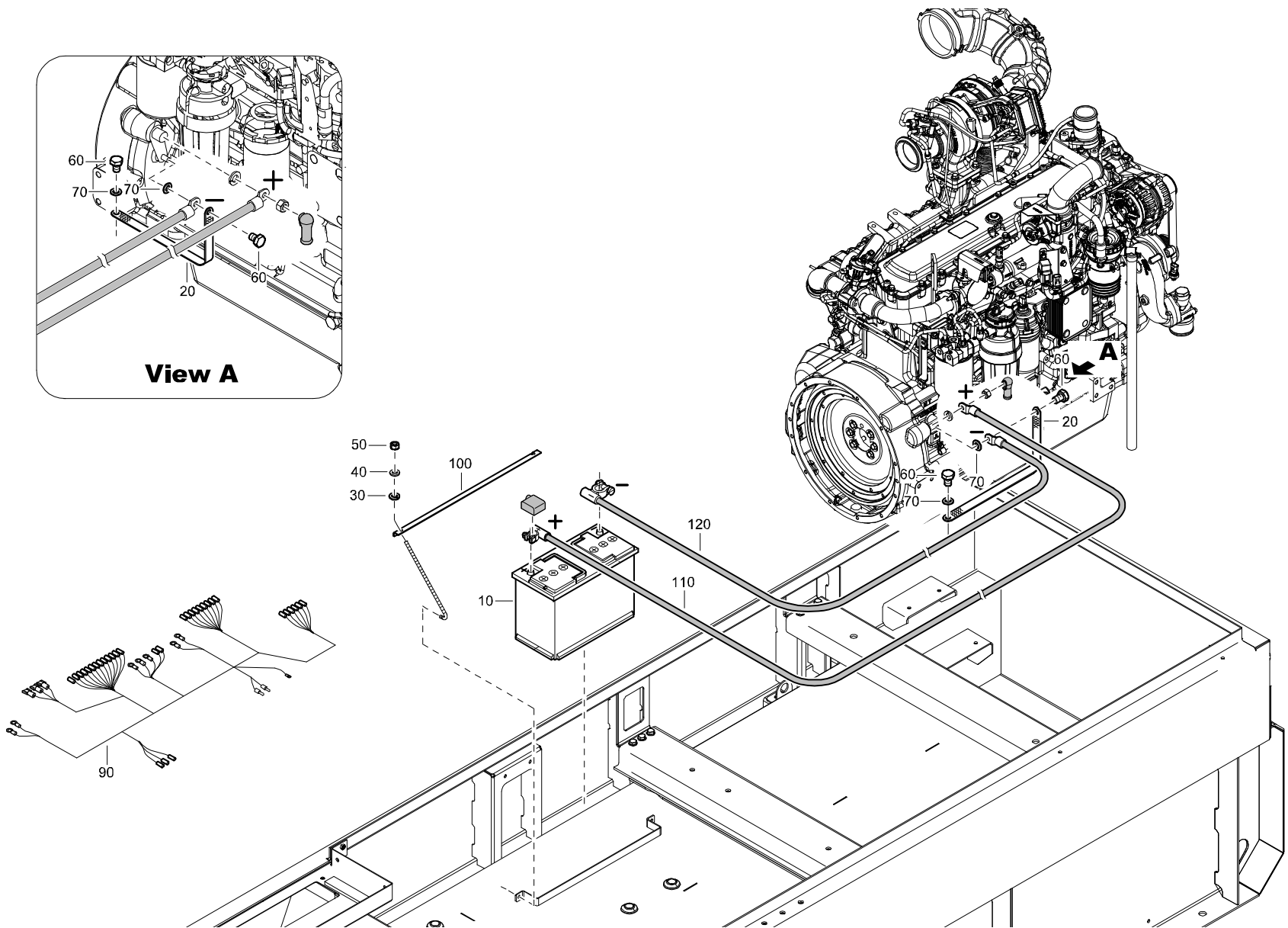
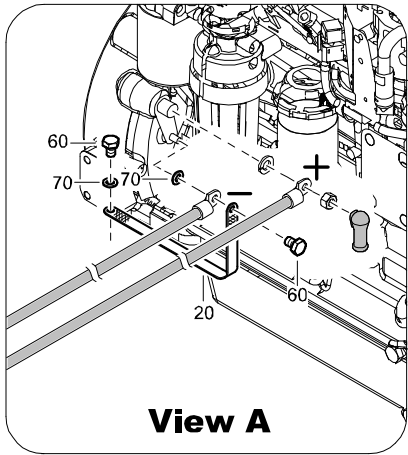


REF	PART NUMBER	DESIGNATION	QTY
10	0147 1368 03	HEX HEAD SCREW	12
20	0211 5162 06	SOC HEAD SCREW	8
30	1615 5509 00	BUFFER-RUBBER	2
40	0147 1404 15	HEX HEAD SCREW	4
50	0301 2358 00	FLAT WASHER	4
60	0147 1401 03	HEX HEAD SCREW	6
70	0301 2358 00	FLAT WASHER	6
90	1626 0440 00	VIBRATION MOUNT	2
100	0147 1401 03	HEX HEAD SCREW	4
110	0302 1274 02	FLAT WASHER	2
120	0147 1401 03	HEX HEAD SCREW	2
130	0147 1400 03	HEX HEAD SCREW	6
140	0301 2358 00	FLAT WASHER	6
150	0147 1401 03	HEX HEAD SCREW	6
160	0301 2358 00	FLAT WASHER	6
170	1619 2766 00	SELF TAP SCREW	3
210	0147 1403 03	HEX HEAD SCREW	6
220	0301 2358 00	FLAT WASHER	6
260	1310 6163 00	SUPPORT ENG FOOT RIGHT	1
270	1310 6162 00	SUPPORT ENG FOOT LEFT	1

AIR INLET - STANDARD



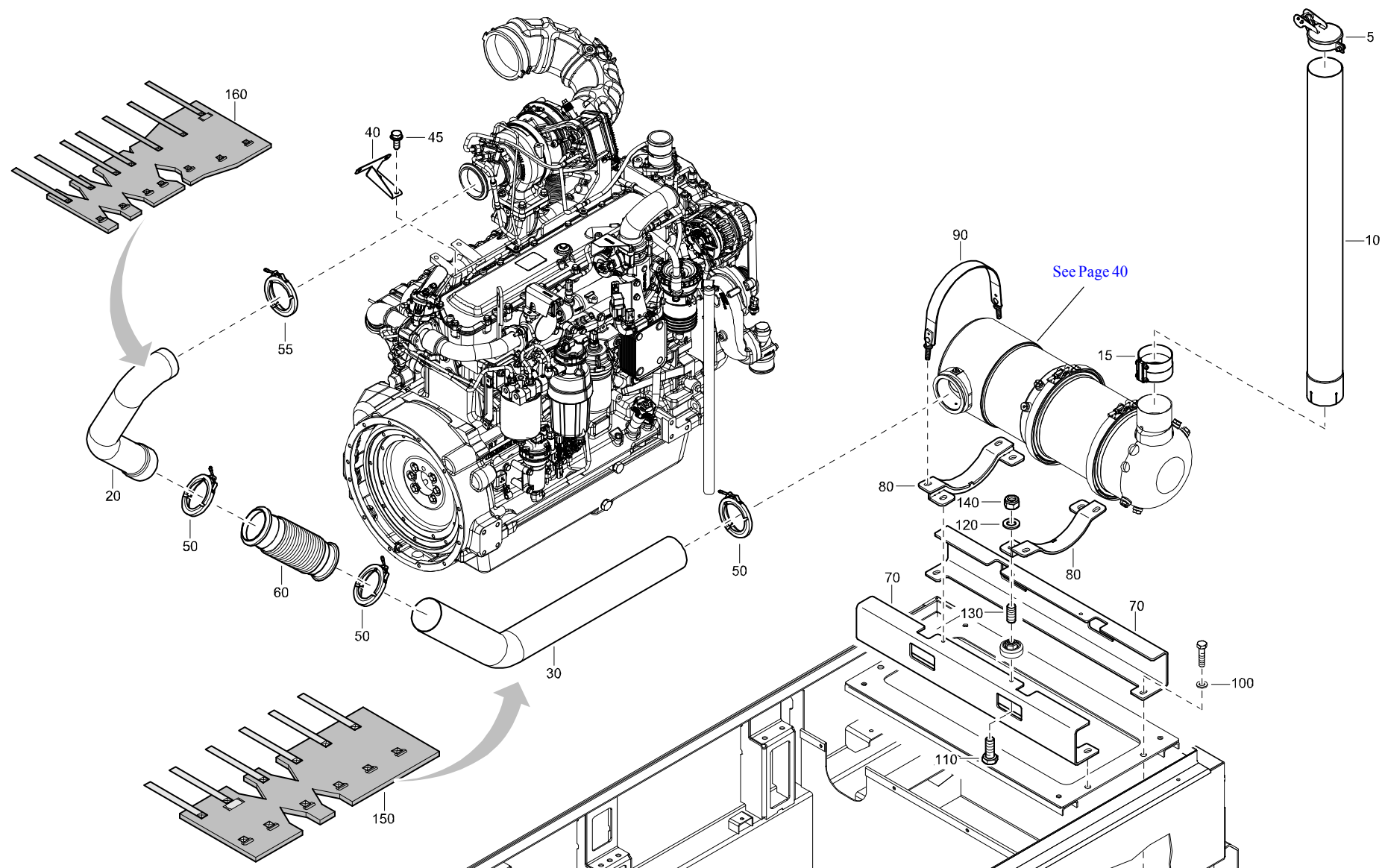
REF	PART NUMBER	DESIGNATION	QTY
10	1619 2766 00	HEX HEAD SCREW	3
20	1310 0730 49	HOSE	1
30	0347 6100 23	HOSE CLAMP	2
40	1310 8204 00	PIPE	1
50	0347 6115 00	HOSE CLAMP	1
60	1615 9388 01	AIR FILTER	1
•A10	1613 8004 00	AIR FILTER ELEMENT	1
70	1613 8005 00	BRACKETAIR FILTER	1
80	0147 1328 03	HEX HEAD SCREW	2
90	0301 2335 00	FLAT WASHER	2
120	1310 8219 00	SUPPORT	1



ELECTRICAL SYSTEM - STANDARD

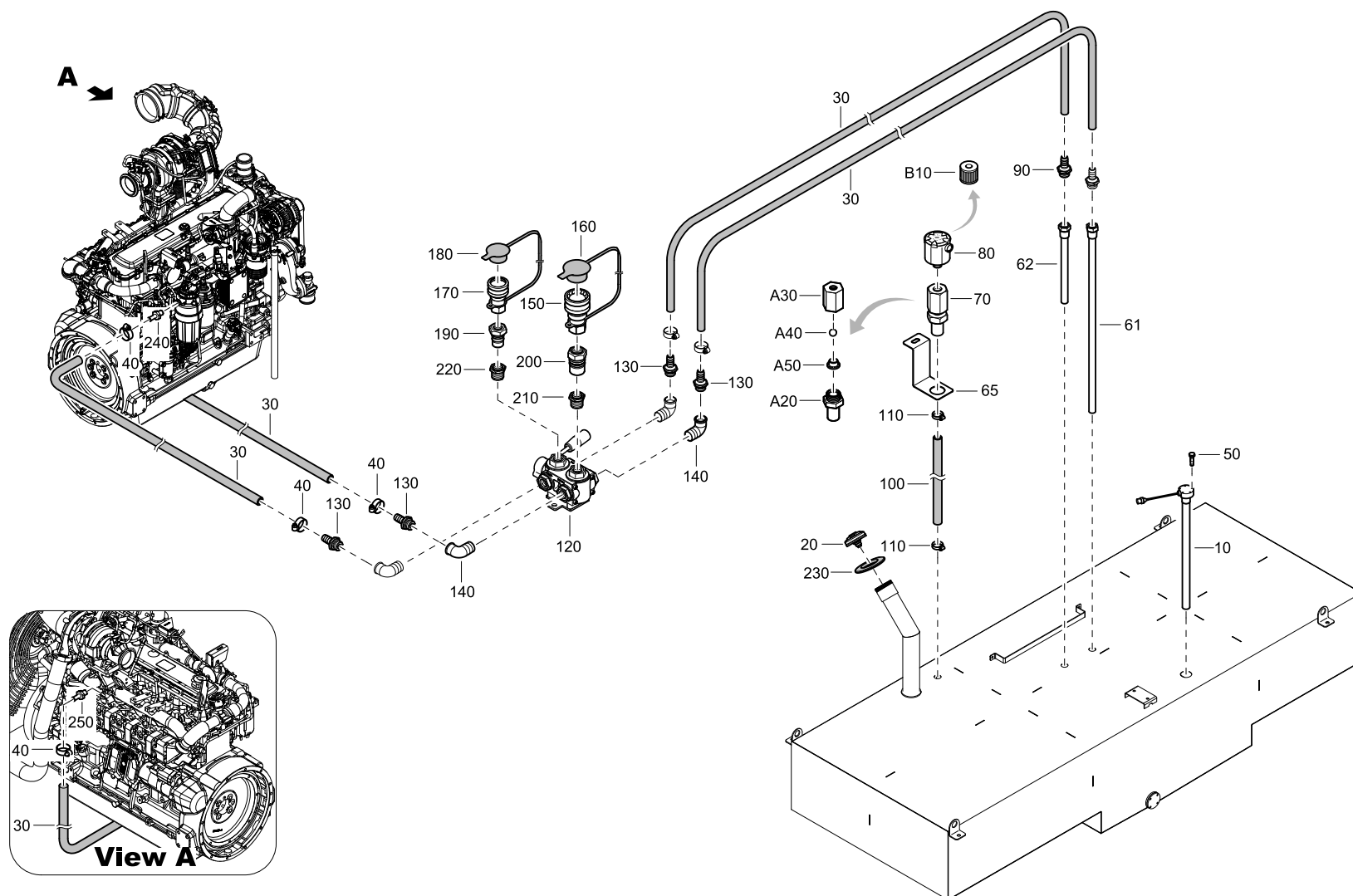
REF	PART NUMBER	DESIGNATION	QTY	REF	PART NUMBER	DESIGNATION	QTY	REF	PART NUMBER	DESIGNATION	QTY
10	1310 0310 89	BATTERY	1								
20	1310 4246 00	STRAP	1								
30	0333 2225 00	SPRING WASHER	2								
40	0301 2321 00	FLAT WASHER	2								
50	0268 3205 00	NUT	2								
60	0147 1397 03	HEX HEAD SCREW	2								
70	0301 2358 00	FLAT WASHER	2								
90	1310 6164 00	WIRE HARNESS	1								
100	1310 8541 00	BATTERY HOLD DOWN	1								
110	1310 0317 65	POS BATT CABLE	1								
120	1310 3128 61	NEG BATT CABLE	1								

EXHAUST SYSTEM - STANDARD



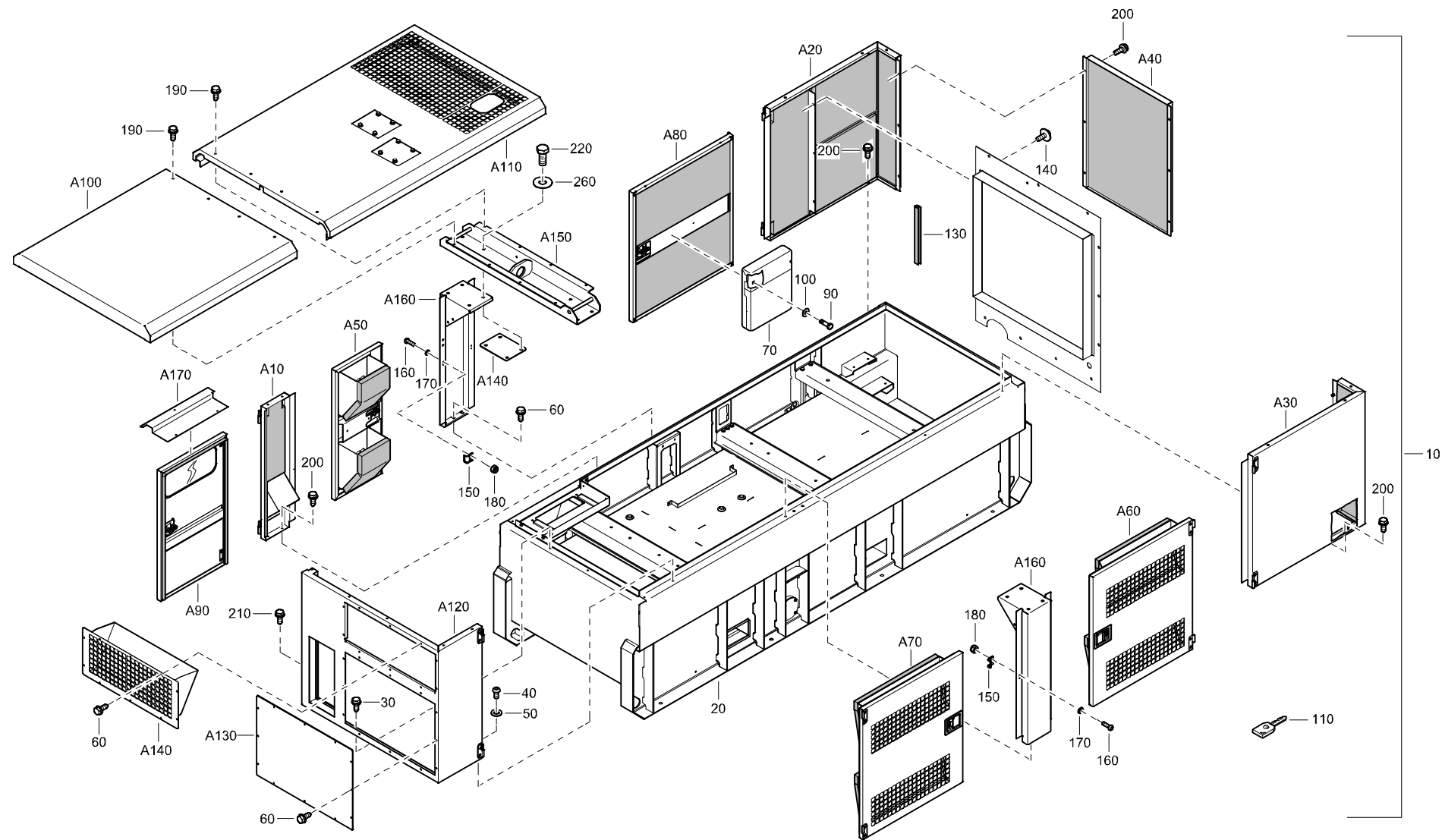
EXHAUST SYSTEM - STANDARD

REF	PART NUMBER	DESIGNATION	QTY	REF	PART NUMBER	DESIGNATION	QTY	REF	PART NUMBER	DESIGNATION	QTY
5	1310 0366 38	RAIN CAP	1								
10	1310 4990 01	PIPE	1								
15	1310 0362 76	CLAMP	1								
20	1310 6165 00	EXHAUST TURBO OUT	1								
30	1310 6166 01	PIPE	1								
40	1310 6250 00	BRACKET TURBO OUT	1								
45	1619 2766 00	HEX HEAD SCREW	4								
50	1310 0723 43	CLAMP-EXHAUST	1								
55	1310 0355 13	CLAMP	1								
60	1310 6333 00	PIPE	1								
70	1310 0356 39	HOLDER-DOCUMENT	1								
80	0259161H02	INSERT-THD	2								
90	0144 3206 03	HEX HEAD SCREW	2								
100	0301 2335 00	FLAT WASHER	6								
110	0147 1401 03	HEX HEAD SCREW	4								
120	0301 2358 00	FLAT WASHER	4								
130	1310 0723 44	STUD	4								
140	0291 1185 01	LOCKNUT	4								
150	1310 6002 32	EXHAUST BLANKET	1								
160	1310 6002 59	EXHAUST BLANKET	1								



FUEL SYSTEM - STANDARD

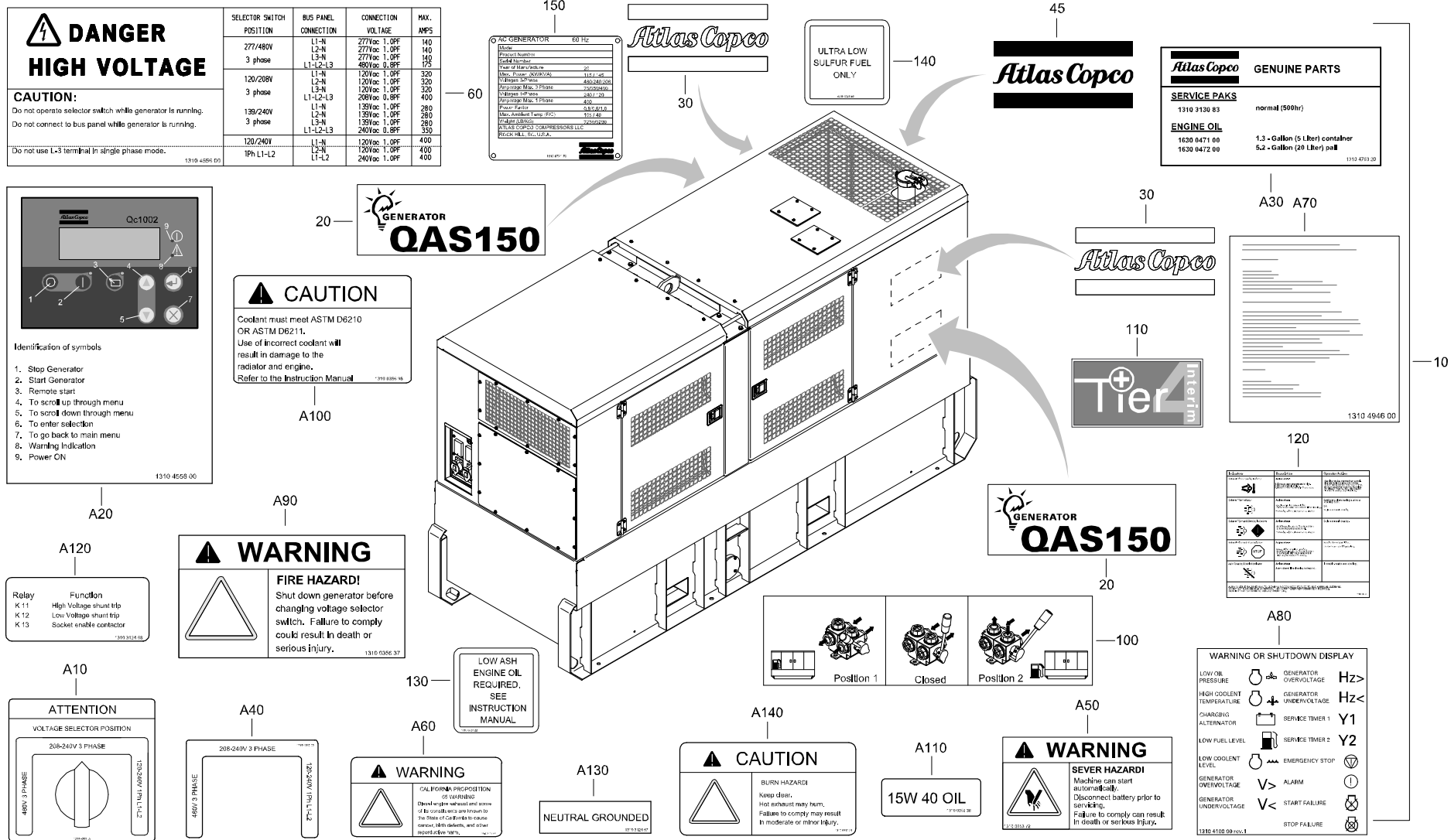
REF	PART NUMBER	DESIGNATION	QTY	REF	PART NUMBER	DESIGNATION	QTY	REF	PART NUMBER	DESIGNATION	QTY
10	1310 0332 69	SENDER	1								
20	1615 6947 01	FUEL CAP	1								
30	1310 0311 98	HOSE	AR								
40	1310 0323 84	HOSE CLAMP	4								
50	0147 1212 03	HEX HEAD SCREW	5								
61	1310 8206 00	TUBE FUEL	1								
62	1310 8207 00	TUBE FUEL	1								
65	1310 6131 00	BRACKET FUEL TANK VENT	1								
70	1626 1871 80	NIPPLE	1								
•A20	1626 1871 00	NIPPLE	1								
•A30	1626 0264 00	NIPPLE	1								
•A40	0517 1100 31	BEARING BALL	1								
•A50	1626 0266 00	WASHER	1								
80	1626 0375 00	FILTER FUEL TANK	1								
•B10	2914 9975 00	FILTER ELEMENT	1								
90	1310 6000 35	NIPPLE-HOSE	1								
100	0072 8403 16	HOSE	AR								
110	0347 6105 00	HOSE CLAMP	2								
120	1604 6111 01	VALVE	1								
130	0571 0020 14	NIPPLE-HOSE	4								
140	1310 0355 62	ELBOW-PIPE	2								
150	1310 0360 49	COUPLER QUICK CONN	1								
160	1310 0360 51	PLUG	1								
170	1310 0360 48	COUPLER QUICK CONN	1								
180	1310 0360 50	PLUG	1								
190	1310 0367 10	NIPPLE	1								
200	1310 0367 07	NIPPLE	1								
210	1310 0720 18	ADAPTER	1								
220	1310 0720 19	ADAPTER	1								
230	1604 0248 00	GASKET	1								
240	1310 0723 45	ADAPTOR - BARB	1								
250	1310 0724 07	ADAPTOR - BARB	1								



BODYWORK - STANDARD

REF	PART NUMBER	DESIGNATION	QTY	REF	PART NUMBER	DESIGNATION	QTY	REF	PART NUMBER	DESIGNATION	QTY
10	1310 0711 00	CANOPY SET	1	150	1604 5031 00	BRACKET	4				
•A10	1310 4938 80	PANEL ASSYFUEL FILL (For details see page 41)	1	160	0215 0003 89	SOC HEAD SCREW	8				
•A20	1310 4939 80	CORNER PANEL ASSY (For details see page 42)	1	170	0301 2321 00	FLAT WASHER	8				
•A30	1310 4939 90	CORNER PANEL ASSY (For details see page 43)	1	180	0291 1108 00	LOCKNUT	8				
•A40	1310 4940 80	SERVICE PANEL ASSY (For details see page 44)	1	190	1619 2766 00	HEX HEAD SCREW	8				
•A50	1310 4942 82	DOOR ASSY (For details see page 45)	1	200	1619 2766 00	HEX HEAD SCREW	14				
•A60	1310 4944 83	DOOR ASSY (For details see page 46)	1	210	0147 1320 03	HEX HEAD SCREW	2				
•A70	1310 4944 84	DOOR ASSY (For details see page 47)	1	220	0147 1401 03	HEX HEAD SCREW	12				
•A80	1310 4955 80	DOOR ASSY (For details see page 48)	1	260	0300 8008 00	FLAT WASHER	8				
•A90	1310 4960 81	DOOR ASSY (For details see page 49)	1								
•A100	1310 4961 80	REAR ROOF ASSY (For details see page 50)	1								
•A110	1310 4962 81	ROOF ASSY (For details see page 51)	1								
•A120	1310 4963 81	PANEL ASSY (For details see page 52)	1								
•A130	1310 4964 80	PLATE ASSY (For details see page 53)	1								
•A140	1310 8199 80	PLATE ASSY (For details see page 54)	1								
20	1310 0712 00	FRAME (For details see page 55)	1								
30	1619 2766 00	HEX HEAD SCREW	4								
40	0215 0003 77	HEX HEAD SCREW	2								
50	0301 2335 00	FLAT WASHER	2								
60	1619 2766 00	HEX HEAD SCREW	28								
70	1310 0356 39	HOLDER-DOCUMENT	1								
90	0144 3206 03	HEX HEAD SCREW	2								
100	0301 2327 00	FLAT WASHER	2								
110	1615 7271 00	KEY	2								
130	1503 1056 00	SEAL	2								
140	1615 5664 00	BOLT-SCRAPER	13								

LABELS - STANDARD

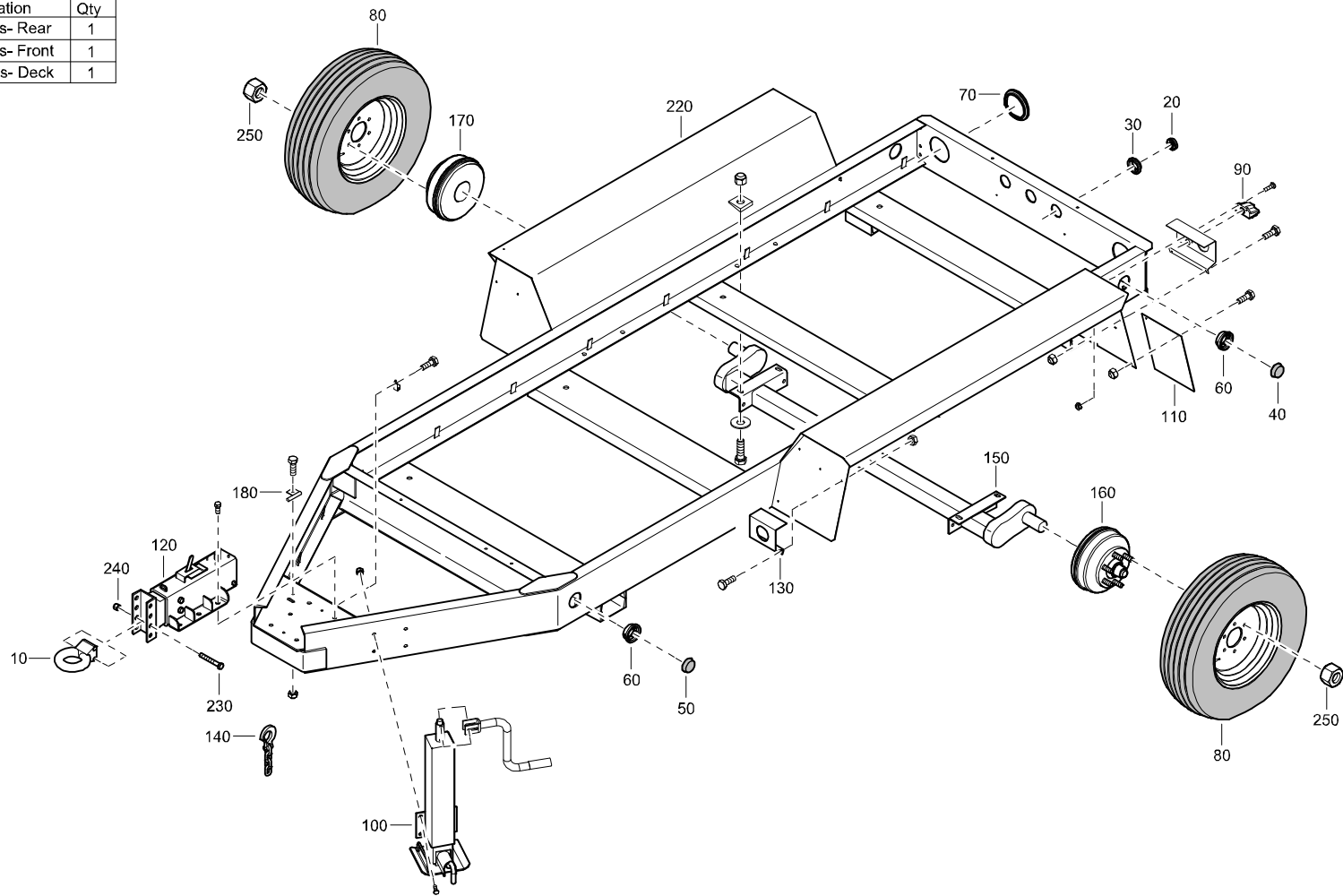


LABELS - STANDARD

REF	PART NUMBER	DESIGNATION	QTY	REF	PART NUMBER	DESIGNATION	QTY	REF	PART NUMBER	DESIGNATION	QTY
10	1310 4557 00	LABEL SHEET	1								
•A10	1310 4561 00	LABEL SELECTOR SW POSITION	1								
•A20	1310 4558 00	LABEL QC1002 OPERATING INST	1								
•A30	1310 4763 20	LABEL GENUINE PARTS	1								
•A40	1310 4560 00	LABEL SELECTOR SW VOLTAGES	1								
•A50	1310 0353 72	LABEL WARNING									
		UNIT CAN START	2								
•A60	1310 3112 36	LABEL CALIFORNIA EMISSIONS	1								
•A70	1310 4946 00	LABEL OPERATING INSTRUCTION	1								
•A80	1310 4100 00	LABEL QC1001 OPERATING	1								
•A90	1310 0356 37	LABEL WARNING ALTERNATOR	1								
•A100	1310 0356 95	LABEL COOLANT MUST									
		MEET ASTM D	1								
•A110	1310 0356 38	LABEL OIL FILL TYPE,	1								
•A120	1310 3124 68	LABEL QAS RELAY FUNCT	1								
•A130	1310 3124 67	LABEL NEUTRAL GROUNDED	1								
•A140	1310 0313 24	LABEL CAUTION HOT EXHAUST	1								
20	1310 4542 00	LABEL MODEL DESIGNATION	2								
30	0690 1150 01	LABEL LOGO WHITE	2								
45	0690 1150 00	LABEL LOGO BLACK	1								
60	1310 4556 00	LABEL INFORMATION	1								
100	1079 9926 56	LABEL 3 WAY VALVE	1								
110	1310 6002 25	LABEL TIER 4 INTER	2								
120	1310 6000 95	LABEL IT4 EXHAUST	1								
130	1310 0723 22	LABEL LOW ASH OIL	1								
140	8915 0021 80	LABEL LOW SULFUR FUEL	1								
150	1310 0721 70	DATA PLATE	1								

UNDERCARRAIGE - WITH HYDRAULIC BRAKE - STANDARD

Not Illustrated			
Ref	Part Number	Designation	Qty
190	1310 0732 68	Harness- Rear	1
200	1310 0732 69	Harness- Front	1
210	1310 0732 65	Harness- Deck	1

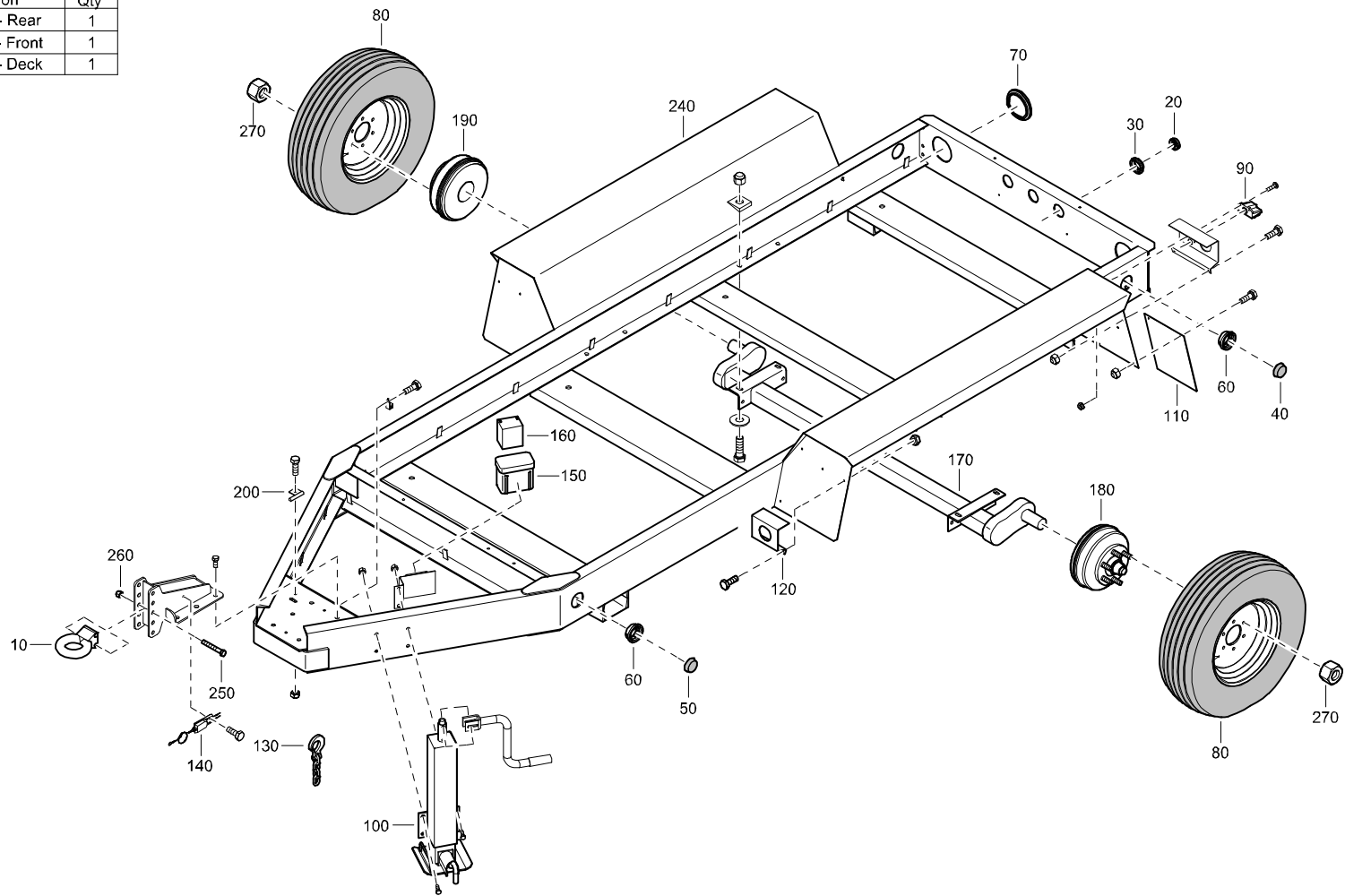


UNDERCARRIAGE - WITH HYDRAULIC BRAKE - STANDARD

REF	PART NUMBER	DESIGNATION	QTY	REF	PART NUMBER	DESIGNATION	QTY	REF	PART NUMBER	DESIGNATION	QTY
10	1310 0346 73	3 TOWING EYE	1								
20	1310 0347 44	CLEARANCE & MAKER LAMP	3								
30	1310 0346 88	GROMMET	3								
40	1310 0347 42	RED REFLECTOR	4								
50	1310 0347 43	YELLOW REFLECTOR	4								
60	1310 0346 89	CLEARANCE LIGHT GROMMET	8								
70	1310 0347 45	STOP TURN LAMPS	2								
80	1310 0324 47	TIRE & WHEEL ASSY	4								
90	1310 0347 33	LICENSE PLATE LAMP	1								
100	1310 0347 12	JACK	1								
110	1310 0347 65	MUD FLAP	2								
120	1310 0345 80	HYDRAULIC ACTUATOR	1								
130	1310 0346 11	LIGHT BRACKET	3								
140	1310 0346 45	SAFETY CHAIN	2								
150	1310 0305 34	AXEL ASSEMBLY HB	2								
160	1310 0305 36	BRAKE ASSEMBLY	2								
170	1310 0305 37	BRAKE ASSEMBLY	2								
180	1310 0732 67	SAFETY -CHAIN ANCHOR	2								
190	1310 0732 68	HARNESS-REAR	1								
200	1310 0732 69	HARNESS-FRONT	1								
210	1310 0732 65	HARNESS-DECK	1								
220	1310 0732 70	FRAME	1								
230	1310 0733 17	SCREW-HEX	2								
240	1310 0733 18	NUT-NYLOC	2								
250	1310 0732 74	LUG NUT	24								

UNDERCARRIAGE - WITH ELECTRIC BRAKE - STANDARD

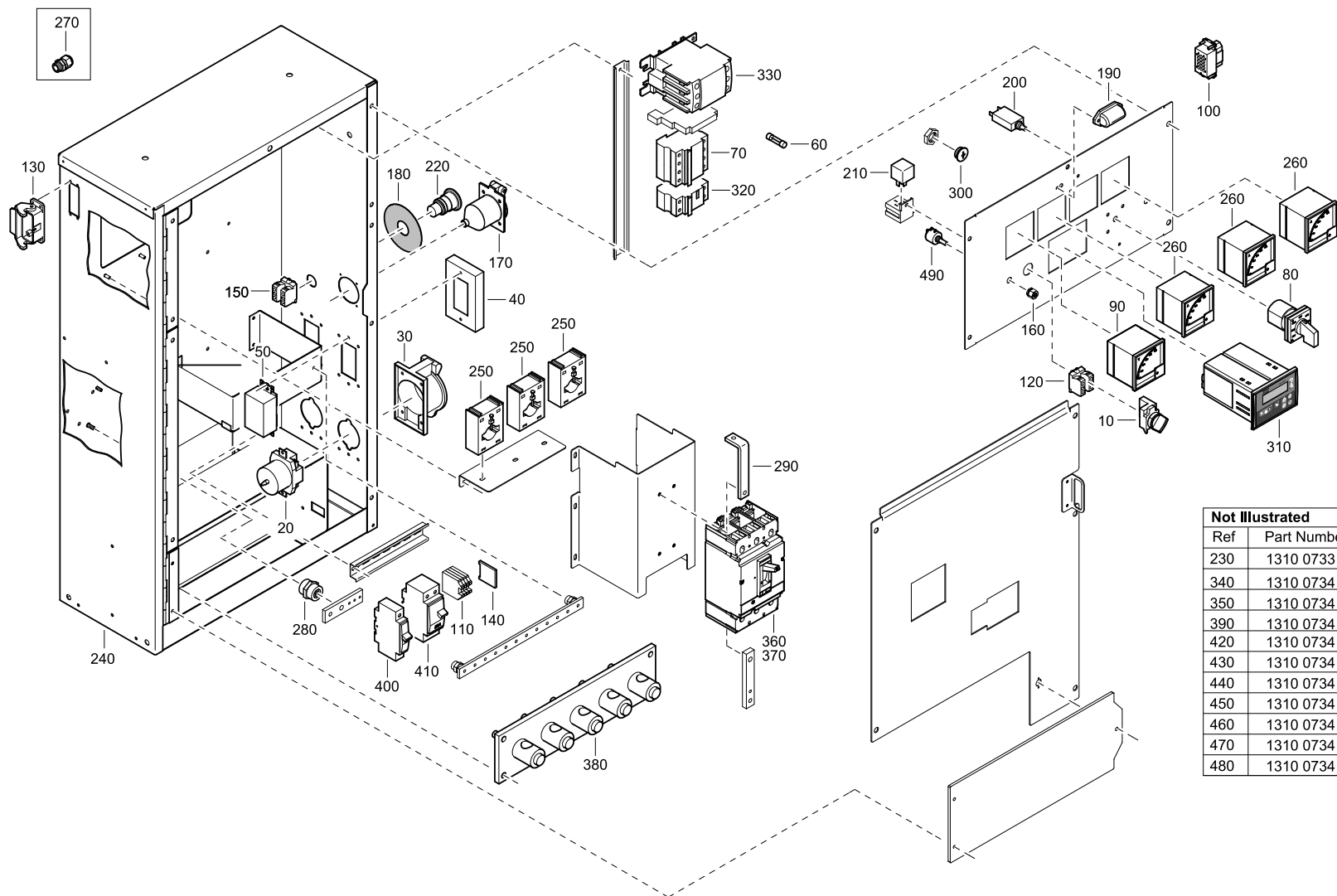
Not Illustrated			
Ref	Part Number	Designation	Qty
210	1310 0732 68	Harness- Rear	1
220	1310 0732 69	Harness- Front	1
230	1310 0732 65	Harness- Deck	1



UNDERCARRIAGE - WITH ELECTRIC BRAKE - STANDARD

REF	PART NUMBER	DESIGNATION	QTY	REF	PART NUMBER	DESIGNATION	QTY	REF	PART NUMBER	DESIGNATION	QTY
10	1310 0346 73	3" TOWING EYE	1								
20	1310 0347 44	CLEARANCE & MAKER LAMP	3								
30	1310 0346 88	GROMMET	3								
40	1310 0347 42	RED REFLECTOR	4								
50	1310 0347 43	YELLOW REFLECTOR	4								
60	1310 0346 89	CLEARANCE LIGHT GROMMET	8								
70	1310 0347 45	STOP TURN LAMPS	2								
80	1310 0324 47	TIRE & WHEEL ASSY	4								
90	1310 0347 33	LICENSE PLATE LAMP	1								
100	1310 0347 12	JACK	1								
110	1310 0347 65	MUD FLAP	2								
120	1310 0345 80	LIGHT BRACKET	3								
130	1310 0346 11	SAFETY CHAIN	2								
140	1310 0346 45	BREAKAWAY SWITCH	1								
150	1310 0351 44	BATTERY BOX	1								
160	1310 0351 45	SEALED BATTERY	1								
170	1310 0305 35	AXEL ASSEMBLY EB	2								
180	1310 0305 38	BRAKE ASSEMBLY	2								
190	1310 0305 39	BRAKE ASSEMBLY	2								
200	1310 0732 67	SAFETY - CHAIN ANCHOR	2								
210	1310 0732 68	HARNESS-REAR	1								
220	1310 0732 69	HARNESS-FRONT	1								
230	1310 0732 65	HARNESS-DECK	1								
240	1310 0732 71	FRAME	1								
250	1310 0733 17	SCREW-HEX	2								
260	1310 0733 18	NUT-NYLOC	2								
270	1310 0732 74	LUG NUT	24								

CUBICLE ASSEMBLY - STANDARD

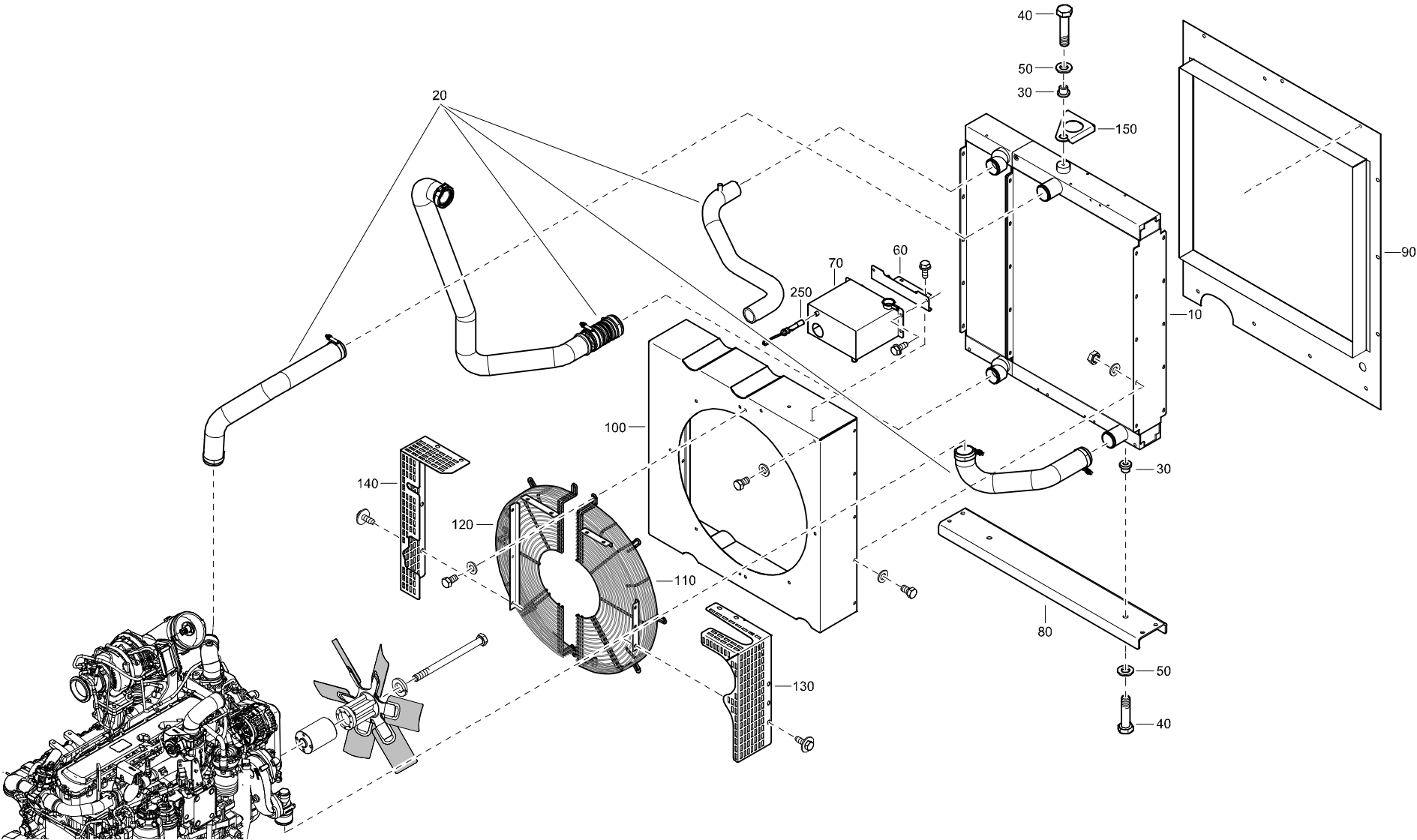


Not Illustrated			
Ref	Part Number	Designation	Qty
230	1310 0733 71	Duct	4
340	1310 0734 77	Monitor	1
350	1310 0734 78	Base	1
390	1310 0734 81	Labelkitlas	1
420	1310 0734 82	Wiring	1
430	1310 0734 83	Wiring	1
440	1310 0734 84	Wiring	1
450	1310 0734 85	Wiring	1
460	1310 0734 86	Wiring	1
470	1310 0734 87	Label	1
480	1310 0734 88	Label	1

CUBICLE ASSEMBLY - STANDARD

REF	PART NUMBER	DESIGNATION	QTY	REF	PART NUMBER	DESIGNATION	QTY	REF	PART NUMBER	DESIGNATION	QTY
10	1310 0733 37	SWITCH	1	430	1310 0734 83	WIRING SINGLE BREAKER	2				
20	1310 0733 38	RECEPTACLE	2	440	1310 0734 84	WIRING SINGLE BREAKER	1				
30	1310 0733 40	RECEPTACLE	2	450	1310 0734 85	WIRING SINGLE BREAKER	1				
40	1310 0733 41	RECEPTACLE	2	460	1310 0734 86	WIRING SINGLE BREAKER	1				
50	1310 0733 43	RECEPTACLE	2	470	1310 0734 87	LABEL	1				
60	1310 0733 44	FUSE	4	480	1310 0734 88	LABEL	1				
70	1310 0733 48	FUSEHOLDER	1	490	1310 0734 89	POTENTIOMETER	1				
80	1310 0733 49	SWITCH	1								
90	1310 0733 50	METER	1								
100	1310 0733 53	CONNECTOR	1								
110	1310 0733 54	TERMINAL	4								
120	1310 0733 55	TERMINAL	1								
130	1310 0733 58	HOUSING CONNECTOR	1								
140	1310 0733 59	TERMINAL BARRIER	1								
150	1310 0733 60	SWITCH CONTACT BLOCK	2								
160	1310 0733 61	LOCK NUT	1								
170	1310 0733 63	SOCKET	1								
180	1310 0734 91	DECAL	1								
190	1310 0733 65	LIGHT	1								
200	1310 0733 66	BREAKER	1								
210	1310 0733 67	RELAY	1								
220	1310 0733 69	SWITCH	1								
230	1310 0733 71	DUCT	4								
240	1310 8015 00	MAIN BOX	1								
250	1310 0734 69	TRANSFORMER	3								
260	1310 0734 70	METER,AMMETER	3								
270	1310 0734 71	COPPER GND BAR	1								
280	1310 0734 72	ISOLATOR	4								
290	1310 0734 73	BUSSBAR	1								
300	1310 0734 74	PLUG	1								
310	1604 9418 03	CONTROLLER	1								
320	1310 0734 75	FUSEHOLDER	1								
330	1310 0734 76	CONTACTOR	1								
340	1310 0734 77	MONITOR	1								
350	1310 0734 78	BASE, CURRENT MONITOR	1								
360	1310 0734 79	BREAKER	1								
370	1310 0734 80	SHUNT TRIP	1								
380	1615 8508 00	TERMINAL ASSEMBLY	1								
390	1310 0734 81	LABEL	1								
400	1310 0733 45	BREAKER	1								
410	1310 0733 39	BREAKER	1								
420	1310 0734 82	WIRING SINGLE BREAKER MAIN	2								

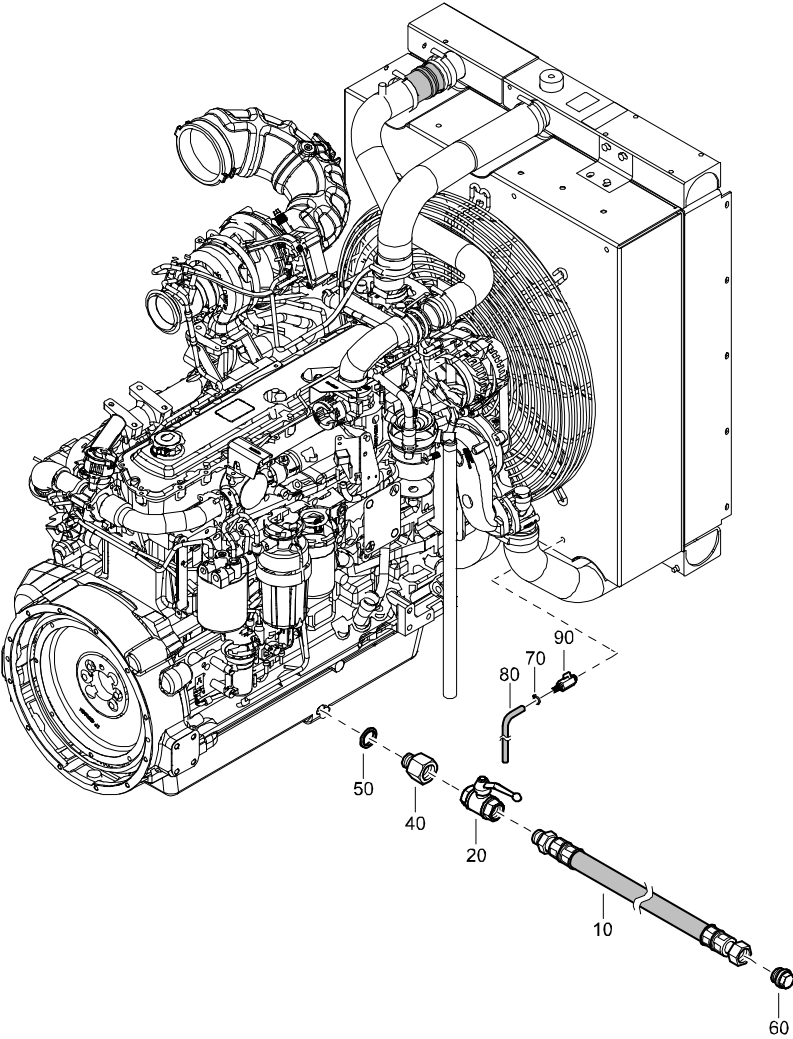
COOLING SYSTEM - STANDARD



COOLING SYSTEM - STANDARD

REF	PART NUMBER	DESIGNATION	QTY	REF	PART NUMBER	DESIGNATION	QTY	REF	PART NUMBER	DESIGNATION	QTY
10	1310 8208 00	COOLER PACK ASY	1								
20	1310 0724 52	HOSE KIT	1								
30	1310 0724 31	ISOLATOR	3								
40	0144 3367 03	HEX HEAD SCREW	3								
50	0301 2358 00	FLAT WASHER	3								
60	1310 6905 00	PLATE	1								
70	1310 6906 00	TANKCOOLANT TOP	1								
80	1310 8205 00	SUPPORT	1								
90	1310 8200 00	PANEL-COOLER	1								
100	1310 8201 00	FANBOX	1								
110	1310 8202 00	FAN GUARD	1								
120	1310 8202 50	FAN GUARD	1								
130	1310 8203 00	GUARD	1								
140	1310 8203 50	GUARD	1								
150	1310 8161 00	BRACKET	1								
250	1089 0568 12	SWITCH-LEVEL	1								

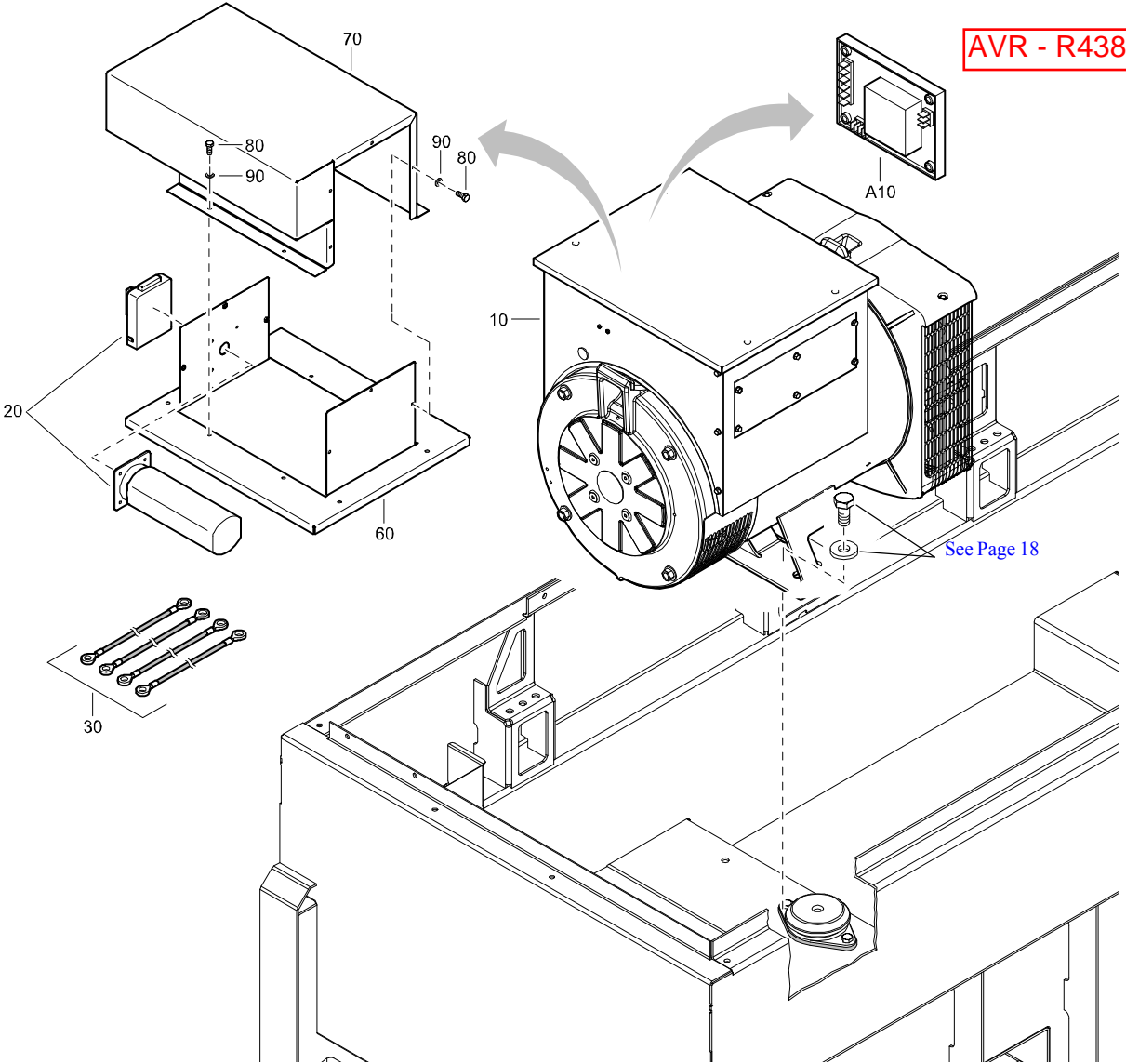
DRAINS - STANDARD



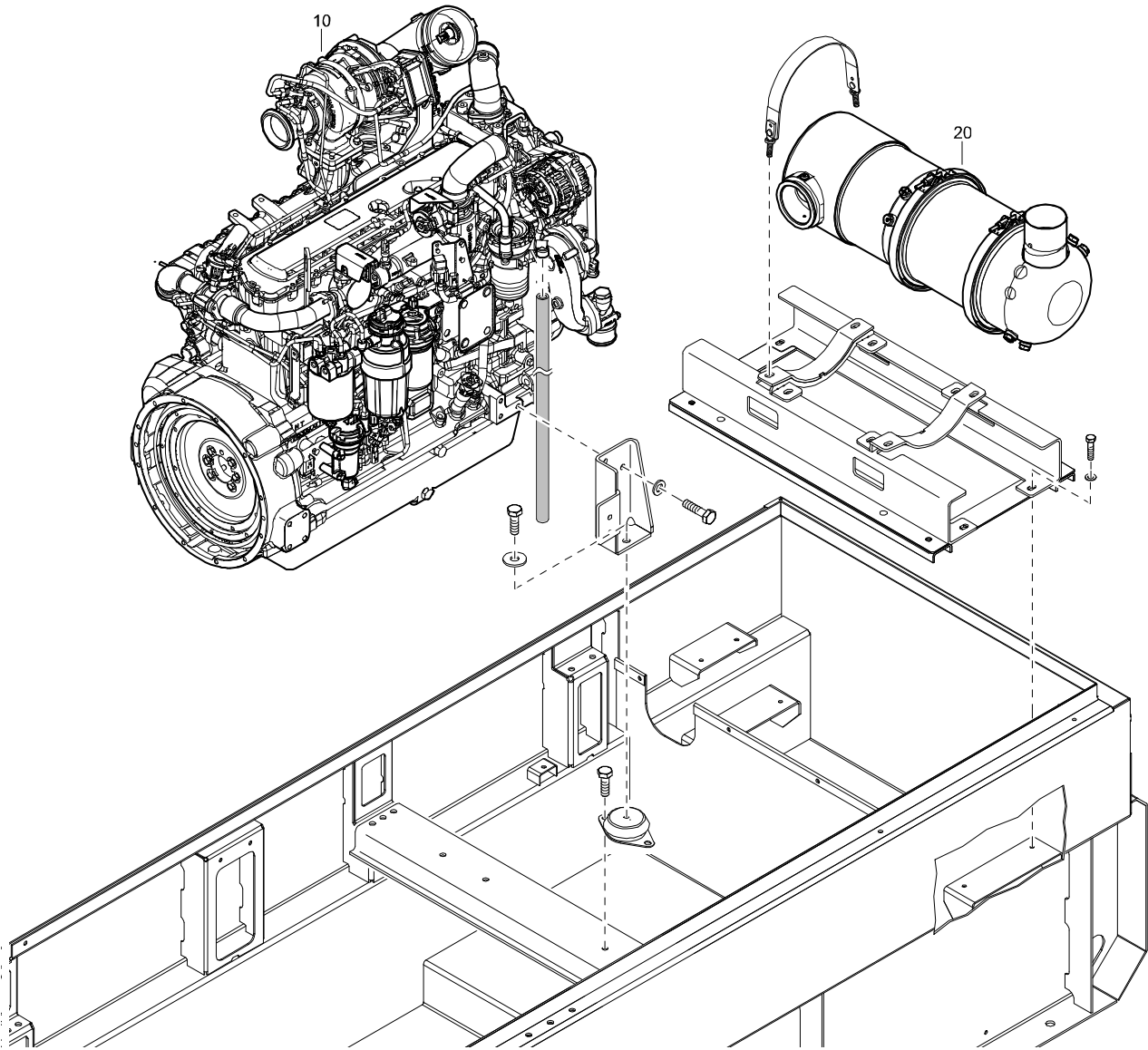
REF	PART NUMBER	DESIGNATION	QTY
10	1310 6000 25	HOSE ASSY	1
20	VAL02131	VALVE-BALL	1
40	1310 0365 52	ADAPTER	1
50	0661 1000 27	WASHER	1
60	1310 0355 25	PLUG-PIPE	1
70	1310 0323 84	HOSE CLAMP	1
80	1310 0355 56	TUBE	1
90	1615 7072 00	VALVE	1

ALTERNATOR ASSEMBLY - STANDARD

AVR - R250 for non AREP Alt
2914841200

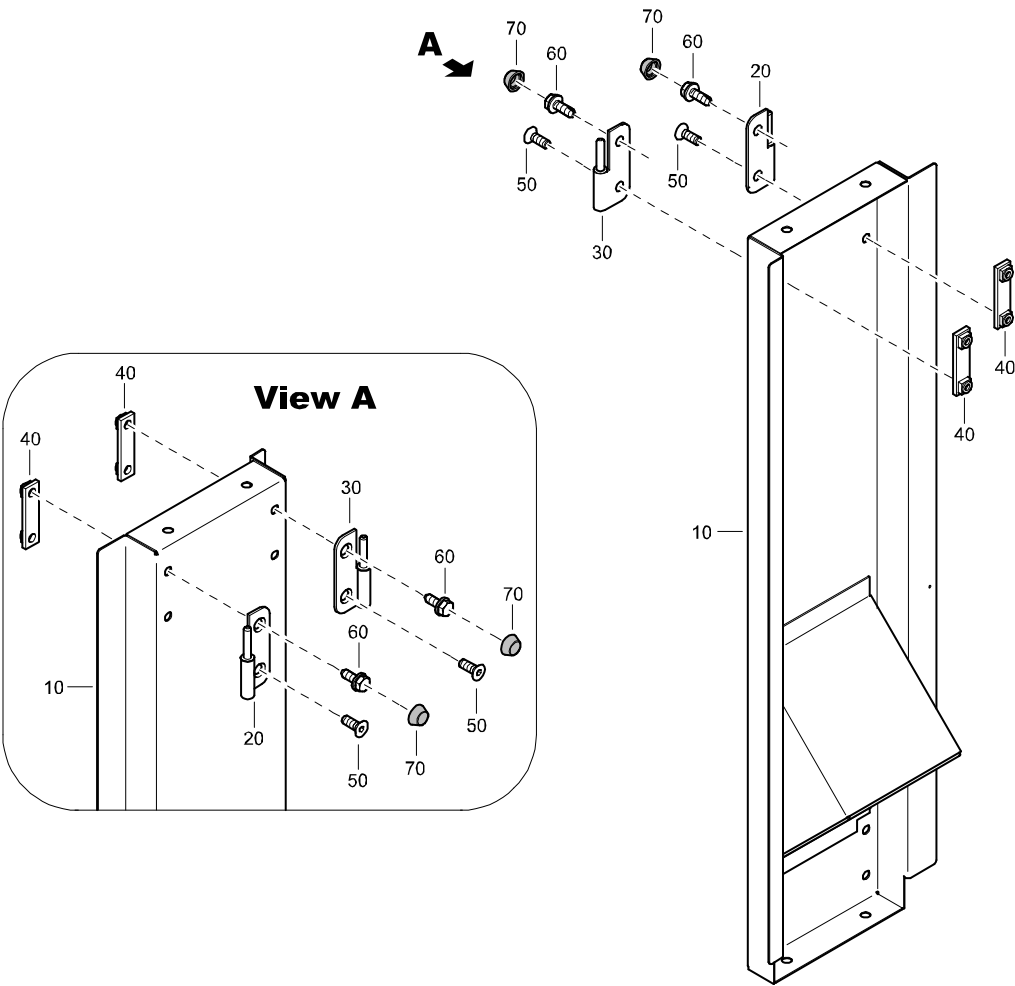


REF	PART NUMBER	DESIGNATION	QTY
10	1310 6066 25	ALTERNATOR	1
•A10	1310 0736 07	ALTERNATOR VOLTAGE REGULATOR	1
20	1089 9082 36	SWITCH	1
30	1310 6461 00	WIRE SET	1
60	1310 6289 01	HOUSING SWITCH	1
70	1310 6290 01	COVER SWITCH	1
80	0147 1204 03	HEX HEAD SCREW	10
90	0301 2318 00	FLAT WASHER	10



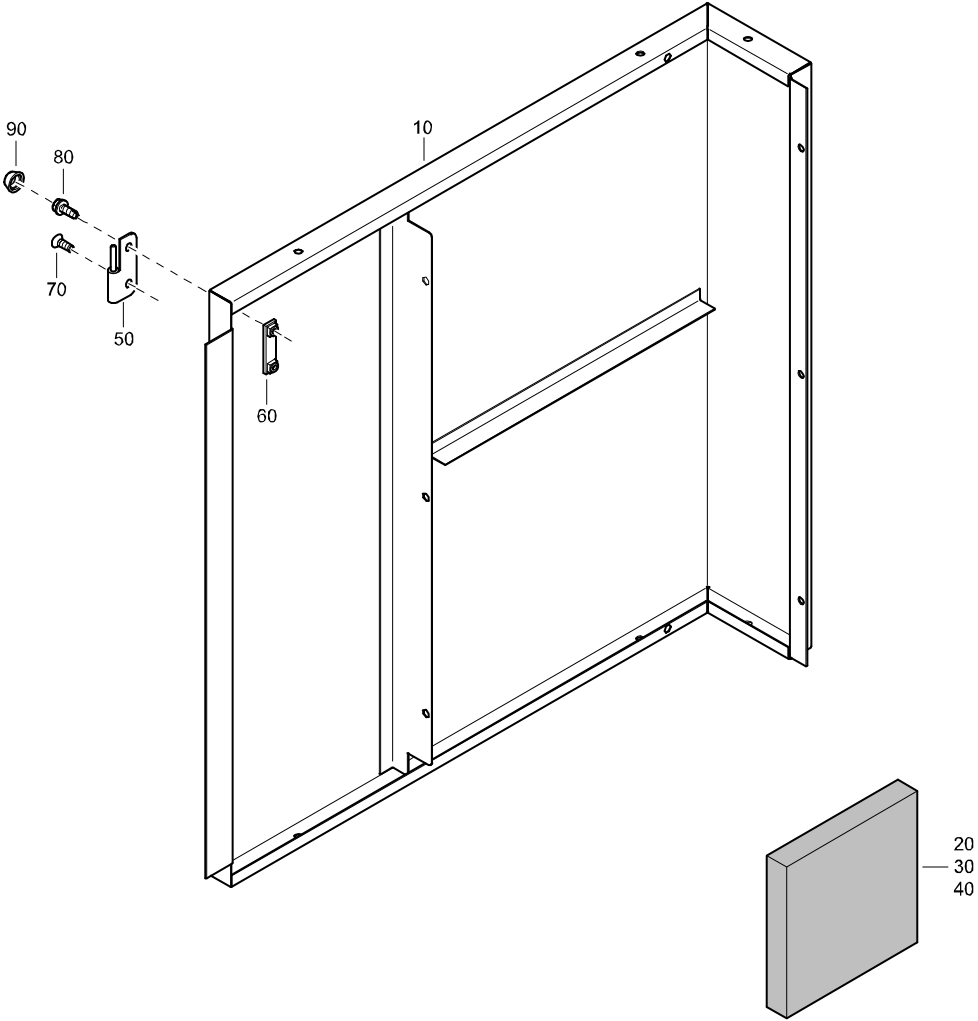
REF	PART NUMBER	DESIGNATION	QTY
10	1310 0722 79	ENGINE-DIESEL	1
20	1310 0724 50	AFTERTREATMENT SYSTEM	1

PANEL ASSEMBLY FUEL FILL - STANDARD



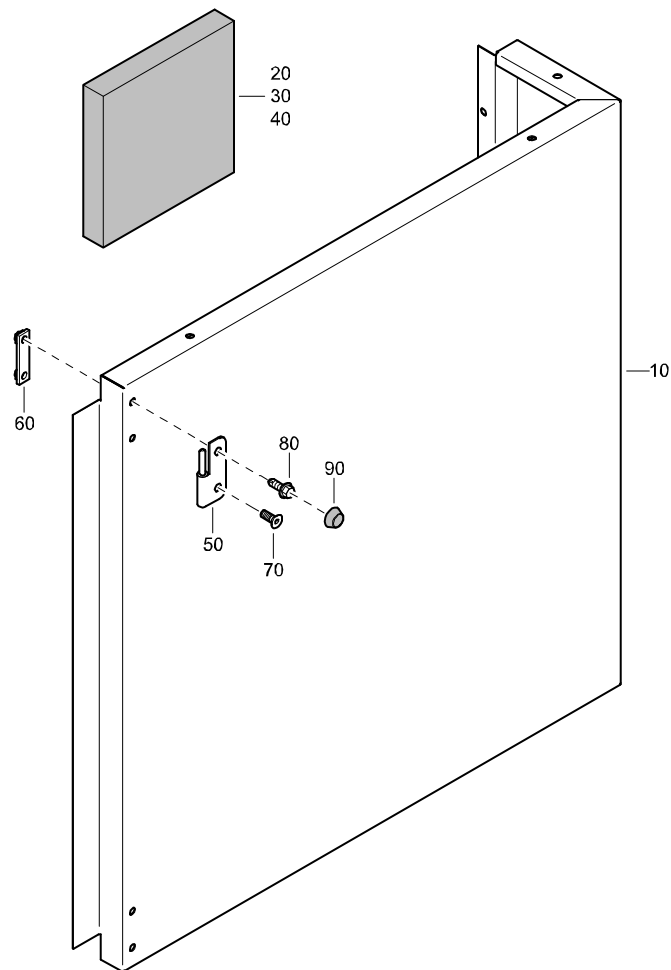
REF	PART NUMBER	DESIGNATION	QTY
-	1310 4938 80	PANEL ASSEMBLY (From page 26)	
•10	1310 4938 00	PANEL FUEL FILL	1
•20	1604 3430 00	HINGE	2
•30	1604 3428 00	HINGE	2
•40	1615 5684 00	BRACKET HINGE RETAINER	4
•50	0216 1324 03	SOCK HEAD SCREW	4
•60	1619 2766 00	SCRAPPER BOLT	4
•70	1613 3672 00	CAP BOLT PROTECT	4

CORNER PANEL ASSEMBLY - STANDARD



REF	PART NUMBER	DESIGNATION	QTY
-	1310 4939 80	CORNER PANEL ASSEMBLY (From page 26)	
•10	1310 4939 00	CORNER PANEL	1
•20	1310 4939 70	INSULATION	2
•30	1310 4939 71	INSULATION	1
•40	1310 4939 72	INSULATION	1
•50	1604 3428 00	HINGE	2
•60	1615 5684 00	BRACKET HINGE RETAINER	2
•70	0216 1324 03	SOCK HEAD SCREW	2
•80	1619 2766 00	SCRAPPER BOLT	2
•90	1613 3672 00	CAP BOLT PROTECT	2

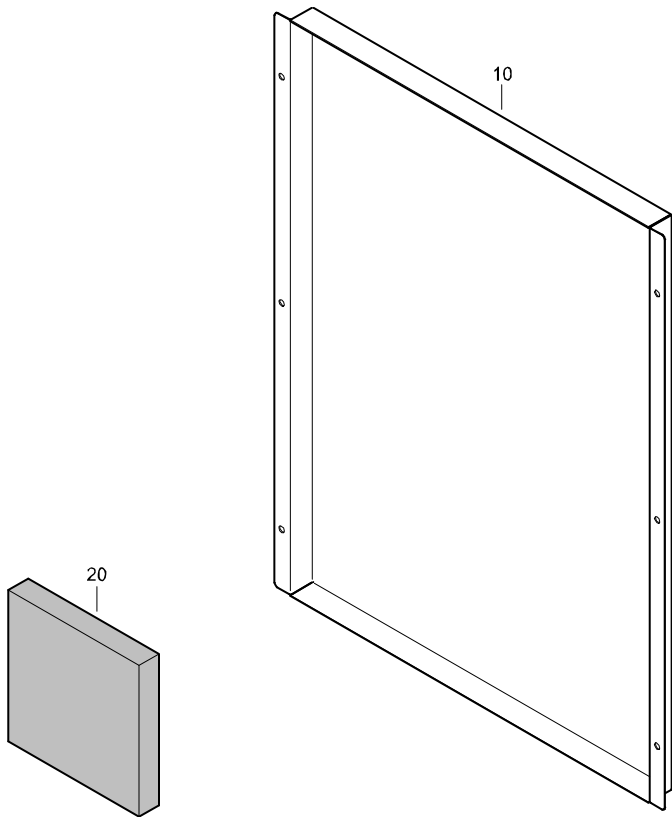
CORNER PANEL ASSEMBLY - STANDARD



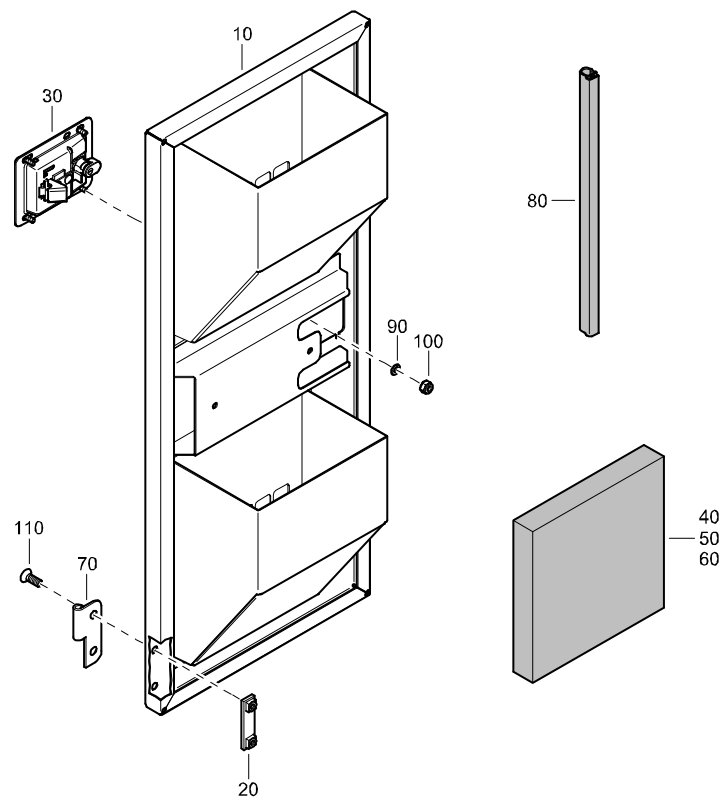
REF	PART NUMBER	DESIGNATION	QTY
-	1310 4939 90	CORNER PANEL ASSEMBLY (From page 26)	
•10	1310 4939 00	CORNER PANEL	1
•20	1310 4939 70	INSULATION	2
•30	1310 4939 71	INSULATION	1
•40	1310 4939 72	INSULATION	1
•50	1604 3428 00	HINGE	2
•60	1615 5684 00	BRACKET HINGE RETAINER	2
•70	0216 1324 03	SOCK HEAD SCREW	2
•80	1619 2766 00	SCRAPPER BOLT	2
•90	1613 3672 00	CAP BOLT PROTECT	2

SERVICE PANEL ASSEMBLY - STANDARD

REF	PART NUMBER	DESIGNATION	QTY
-	1310 4940 80	SERVICE PANEL ASSEMBLY (From page 26)	
•10	1310 4940 00	SERVICE PANEL	1
•20	1310 4940 70	INSULATION	1

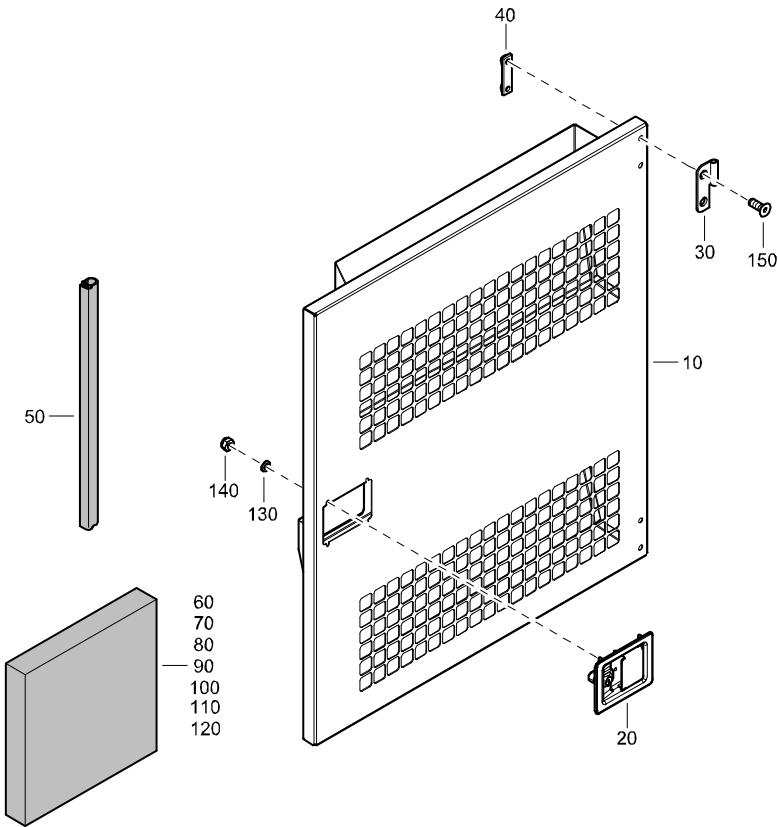


DOOR ASSEMBLY - STANDARD



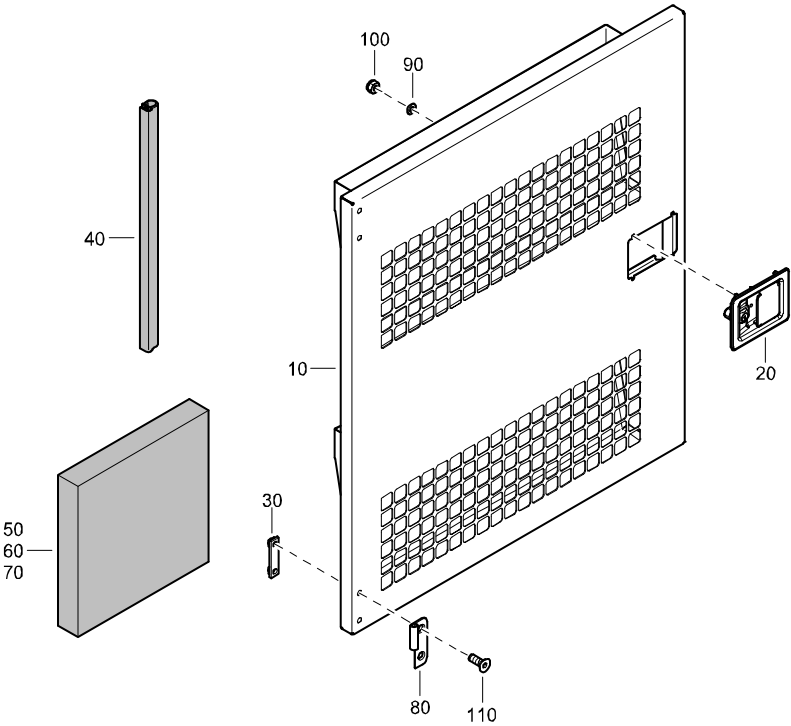
REF	PART NUMBER	DESIGNATION	QTY
-	1310 4942 82	DOOR ASSEMBLY (From page 26)	
•10	1310 4942 02	DOOR	1
•20	1615 5684 00	BRACKET	2
•30	1615 6967 03	HANDLE	1
•40	1310 4942 71	FOAM	2
•50	1310 4942 72	FOAM	2
•60	1310 4944 73	FOAM	2
•70	1604 3431 00	HINGE	2
•80	1604 4317 00	SEAL	1
•90	0301 2321 00	FLAT WASHER	4
•100	0291 1108 00	LOCKNUT	4
•110	0216 1324 03	SOC HEAD SCREW	4

DOOR ASSEMBLY - STANDARD



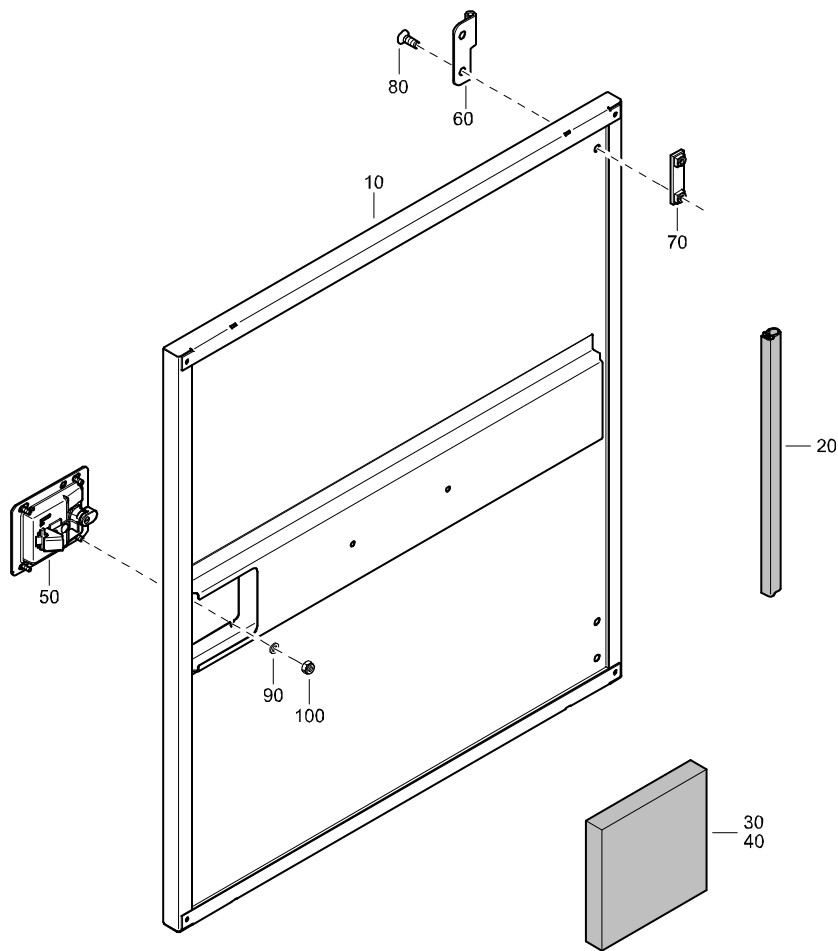
REF	PART NUMBER	DESIGNATION	QTY
-	1310 4944 83	DOOR ASSEMBLY (From page 26)	
•10	1310 4944 03	DOOR	1
•20	1615 6967 03	HANDLE	1
•30	1604 3431 00	HINGE	2
•40	1615 5684 00	BRACKET	2
•50	1604 4317 00	SEAL	1
•60	1310 4944 73	FOAM	2
•70	1310 4944 74	FOAM	1
•80	1310 4944 67	FOAM	1
•90	1310 4944 79	FOAM	1
•100	1310 4944 66	FOAM	1
•110	1310 4944 65	FOAM	1
•120	1310 4944 64	FOAM	1
•130	0301 2321 00	FLAT WASHER	4
•140	0291 1108 00	LOCKNUT	4
•150	0216 1324 03	SOC HEAD SCREW	4

DOOR ASSEMBLY - STANDARD



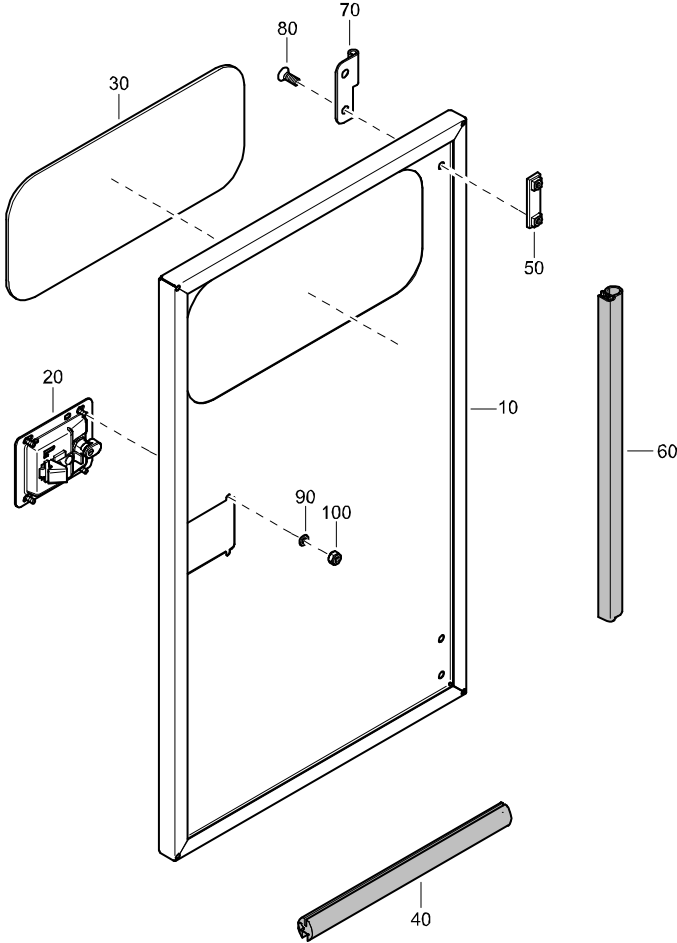
REF	PART NUMBER	DESIGNATION	QTY
-	1310 4944 84	DOOR ASSEMBLY (From page 26)	
•10	1310 4944 04	PANEL	1
•20	1615 6967 03	HANDLE	1
•30	1615 5684 00	BRACKET	2
•40	1604 4317 00	SEAL	1
•50	1310 4944 73	FOAM	2
•60	1310 4944 68	FOAM	2
•70	1310 4944 69	FOAM	2
•80	1604 3429 00	HINGE	2
•90	0301 2321 00	FLAT WASHER	4
•100	0291 1108 00	LOCKNUT	4
•110	0216 1324 03	SOC HEAD SCREW	4

DOOR ASSEMBLY - STANDARD



REF	PART NUMBER	DESIGNATION	QTY
-	1310 4955 80	DOOR ASSEMBLY (From page 26)	
•10	1310 4955 00	DOOR	1
•20	1604 4317 00	SEAL	AR
•30	1310 4955 70	INSULATION	1
•40	1310 4955 71	INSULATION	1
•50	1615 6967 03	HANDLE	1
•60	1604 3429 00	HINGE	2
•70	1615 5684 00	BRACKET HINGE RETAINER	2
•80	0216 1324 03	SOCK HEAD SCREW	4
•90	0301 2321 00	FLAT WASHER	4
•100	0291 1108 00	LOCKNUT	4

CUBICLE DOOR ASSEMBLY - STANDARD

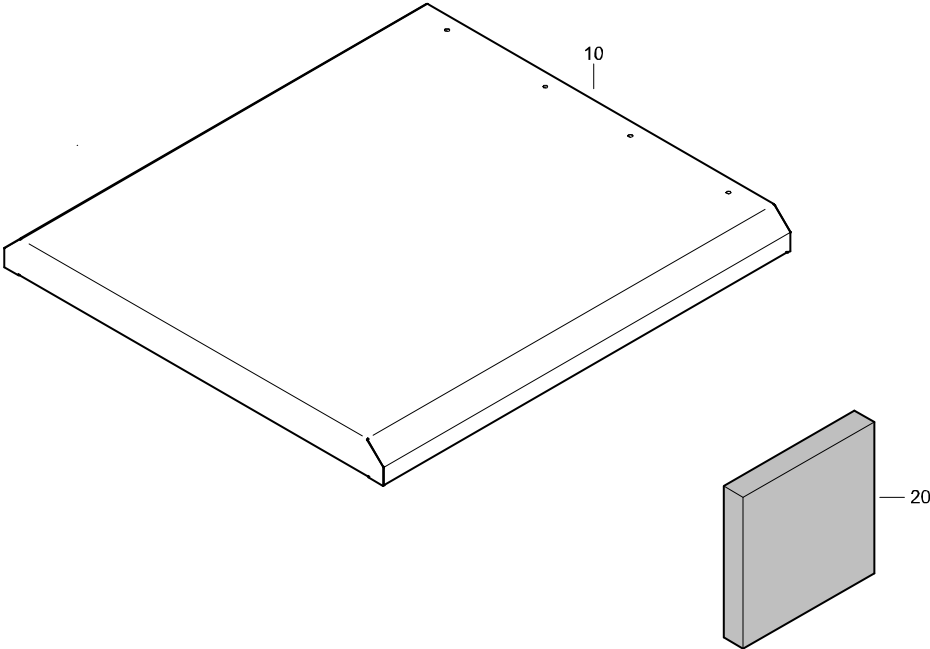


REF	PART NUMBER	DESIGNATION	QTY
-	1310 4960 81	CUBICLE DOOR ASSEMBLY (From page 26)	
•10	1310 4960 01	CUBICLE DOOR	1
•20	1615 6967 03	HANDLE	1
•30	1604 4922 00	WINDOW CUBICLE DOOR	1
•40	1604 4541 00	SEAL	1
•50	1615 5684 00	BRACKET	2
•60	1604 4317 00	SEAL	1
•70	1604 3429 00	HINGE	2
•80	0216 1324 03	SOC HEAD SCREW	4
•90	0301 2321 00	FLAT WASHER	4
•100	0291 1108 00	LOCKNUT	4

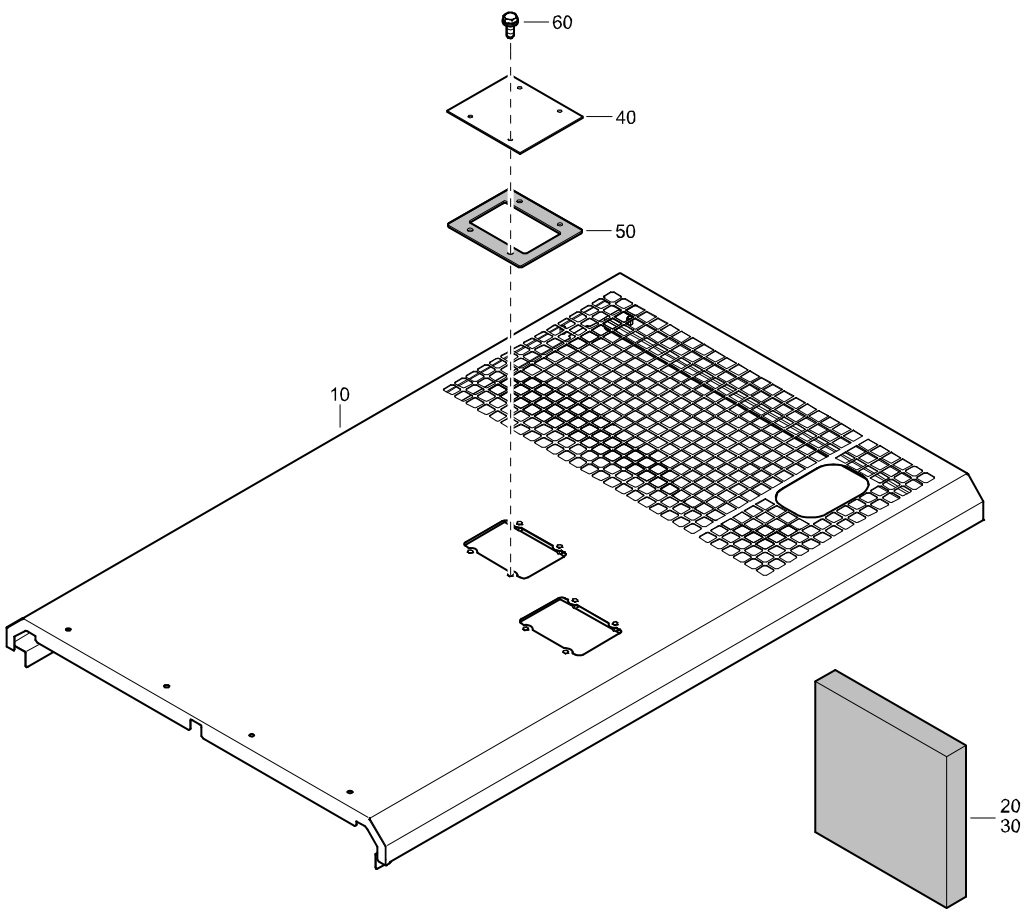
REAR ROOF ASSEMBLY - STANDARD

REF	PART NUMBER	DESIGNATION	QTY
-	1310 4961 80	REAR ROOF ASSEMBLY	
•10	1310 4961 00	REAR ROOF	1
•20	1310 4961 70	INSULATION	2

(From page 26)

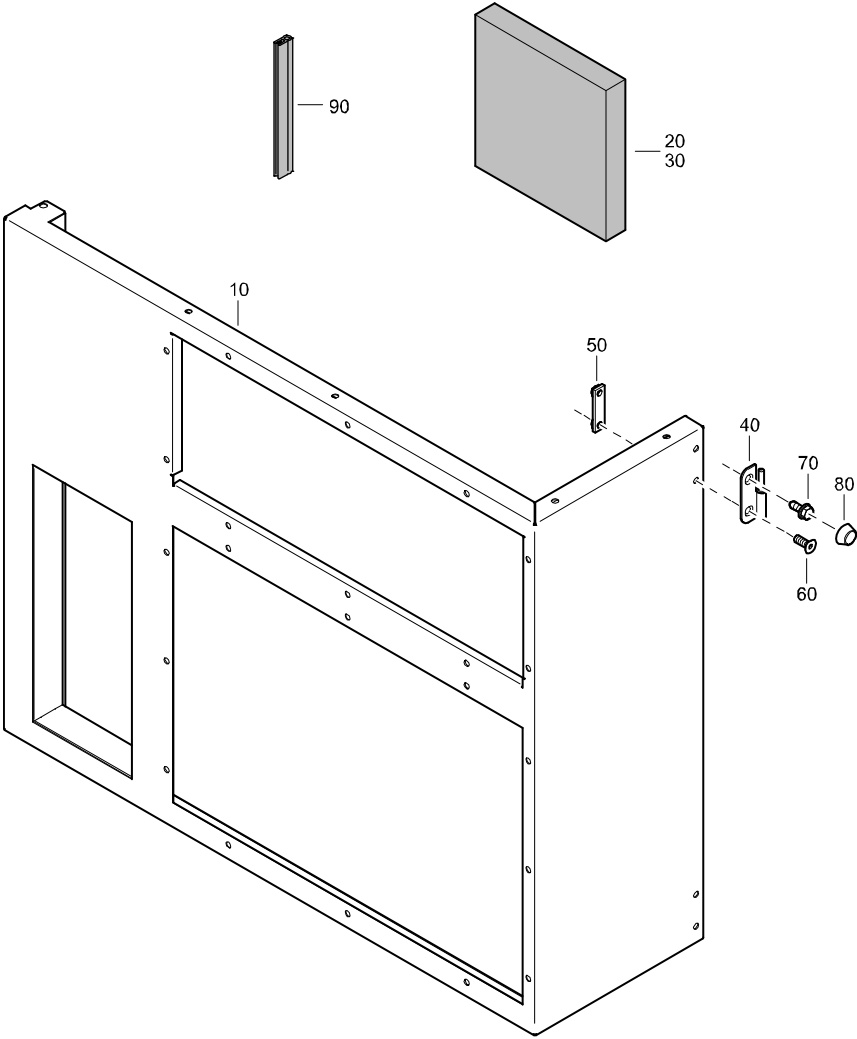


FRONT ROOF ASSEMBLY - STANDARD



REF	PART NUMBER	DESIGNATION	QTY
-	1310 4962 81	FRONT ROOF ASSEMBLY	(From page 26)
•10	1310 4962 01	ROOF	1
•20	1310 4961 70	INSULATION	1
•30	1310 4962 74	INSULATION	1
•40	1310 4962 72	COVER	2
•50	1310 4962 73	SEALGASKET	2
•60	1619 2766 00	HEX HEAD SCREW	8

PANEL ASSEMBLY - STANDARD



REF	PART NUMBER	DESIGNATION	QTY
-	1310 4963 81	PANEL ASSEMBLY (From page 26)	
•10	1310496300	PANEL	1
•20	1310496370	INSULATION	1
•30	1310496371	INSULATION	1
•40	1604342800	HINGE	2
•50	1615568400	BRACKET	2
•60	0216132403	SCREW	2
•70	1619276600	SCRAPPER BOLT	2
•80	1613367200	CAP-BOLT PROTECT	2
•90	1202658401	SEAL-EDGE	AR

PLATE ASSEMBLY - STANDARD

REF	PART NUMBER	DESIGNATION	QTY
-	1310 4964 81	PLATE ASSEMBLY (From page 26)	
•10	1310 4964 00	PLATE	1
•20	1310 4964 70	INSULATION	2
•30	1310 4964 74	PLATE	1

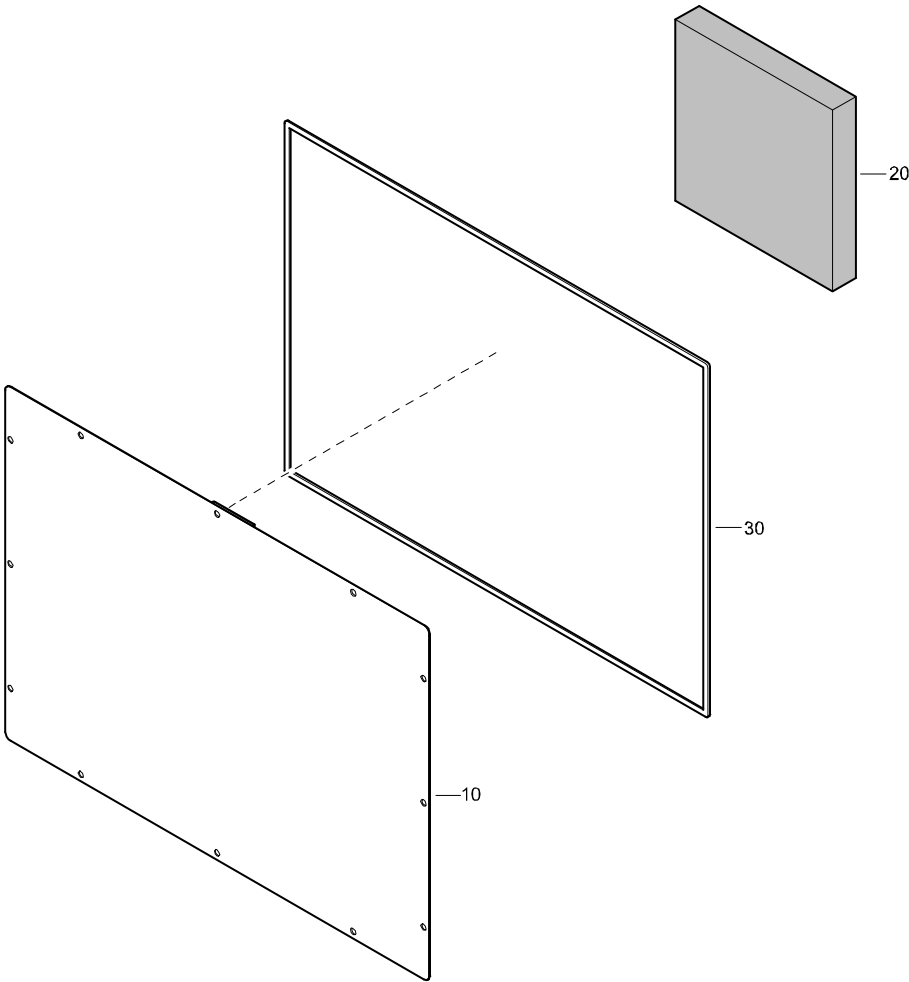
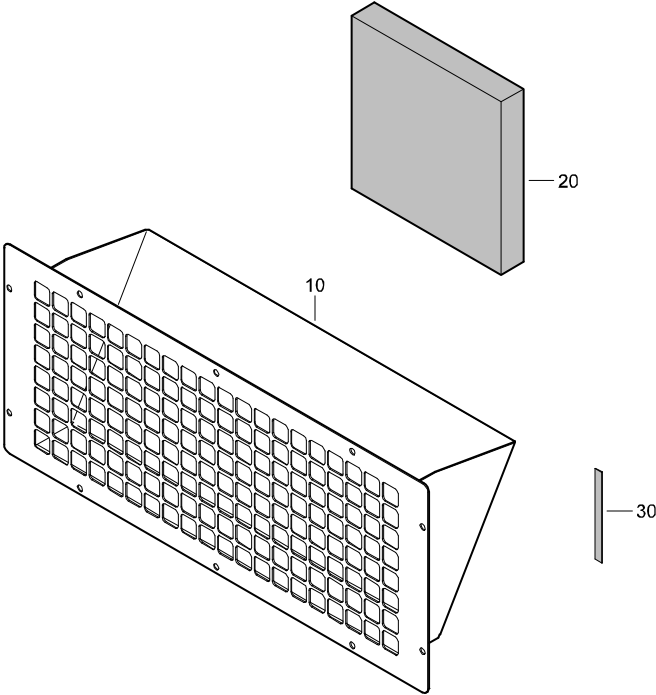
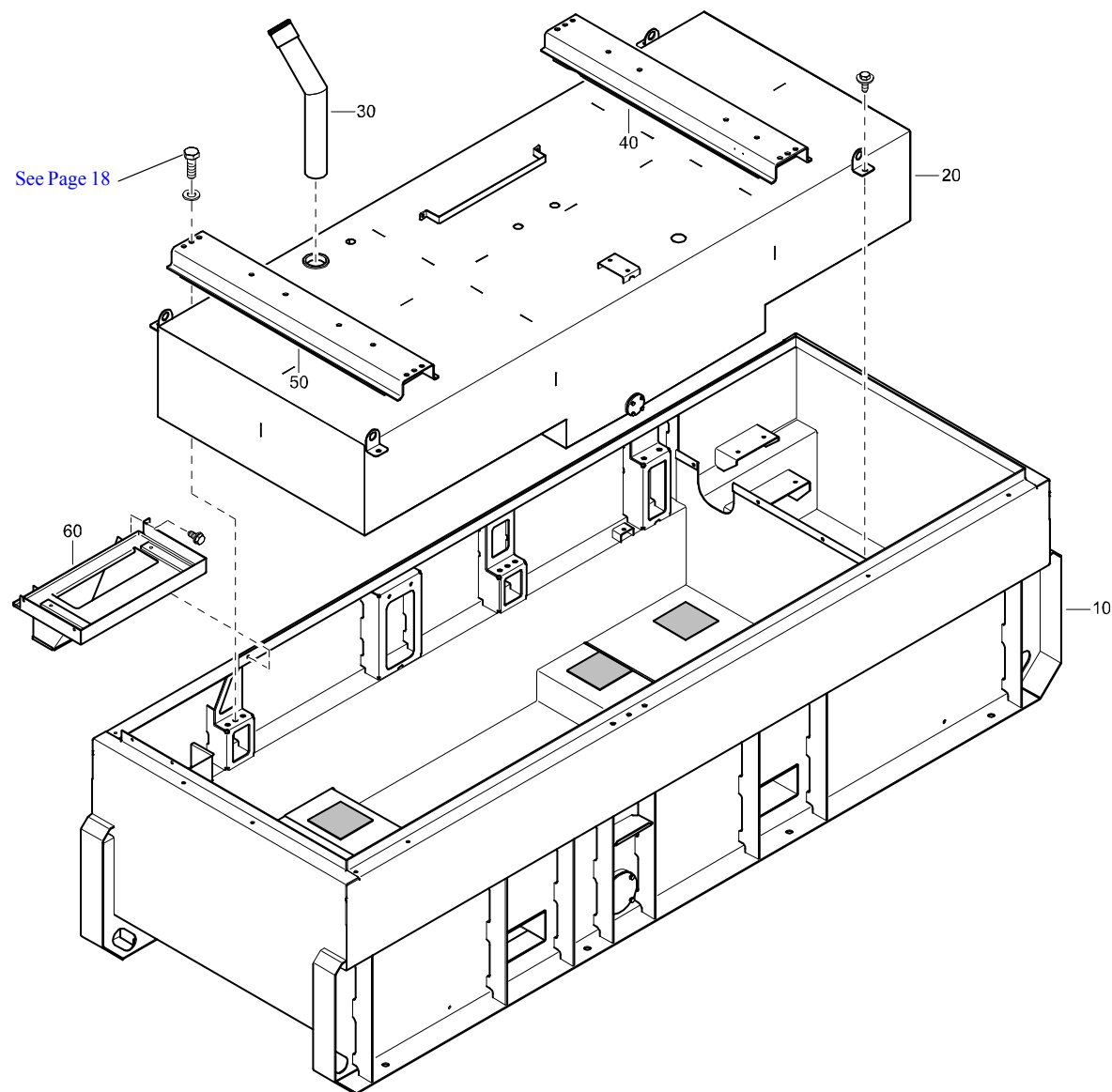


PLATE ASSEMBLY - STANDARD

REF	PART NUMBER	DESIGNATION	QTY
-	1310 8199 80	PLATE ASSEMBLY (From page 26)	
•10	1310 8199 00	BAFFLE	1
•20	1310 4967 72	INSULATION	1
•30	1310 8199 71	SEAL	2

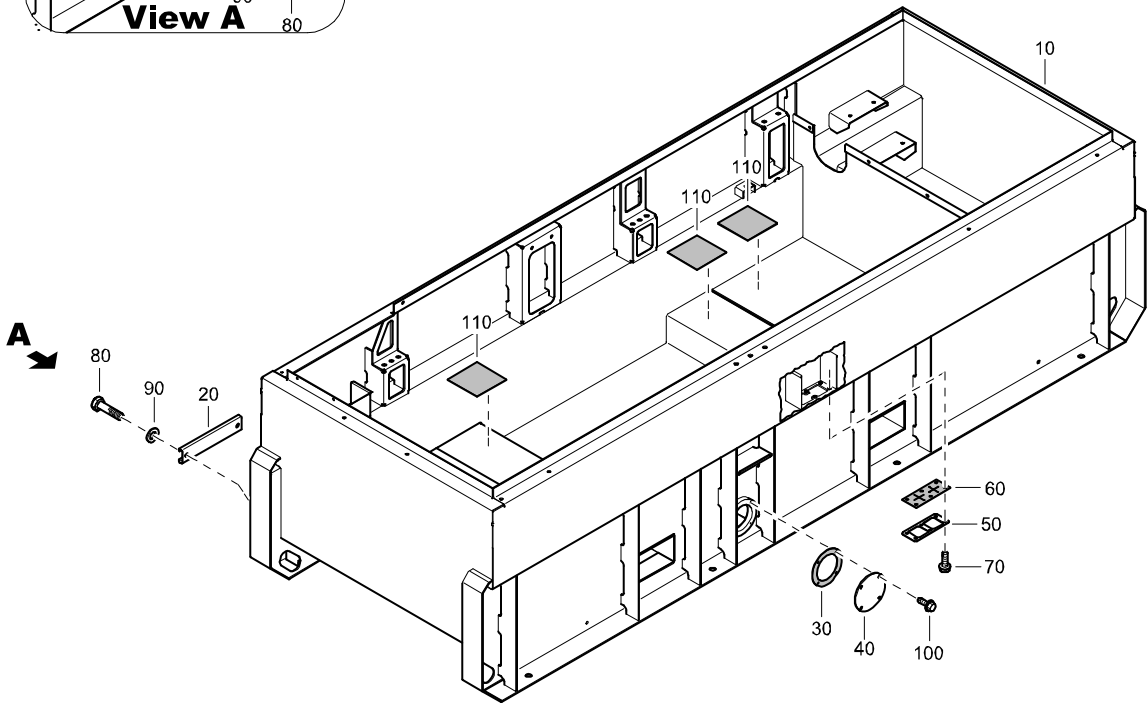
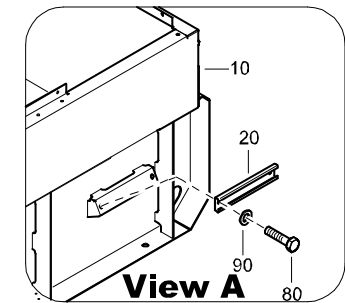


FRAME ASSEMBLY - STANDARD



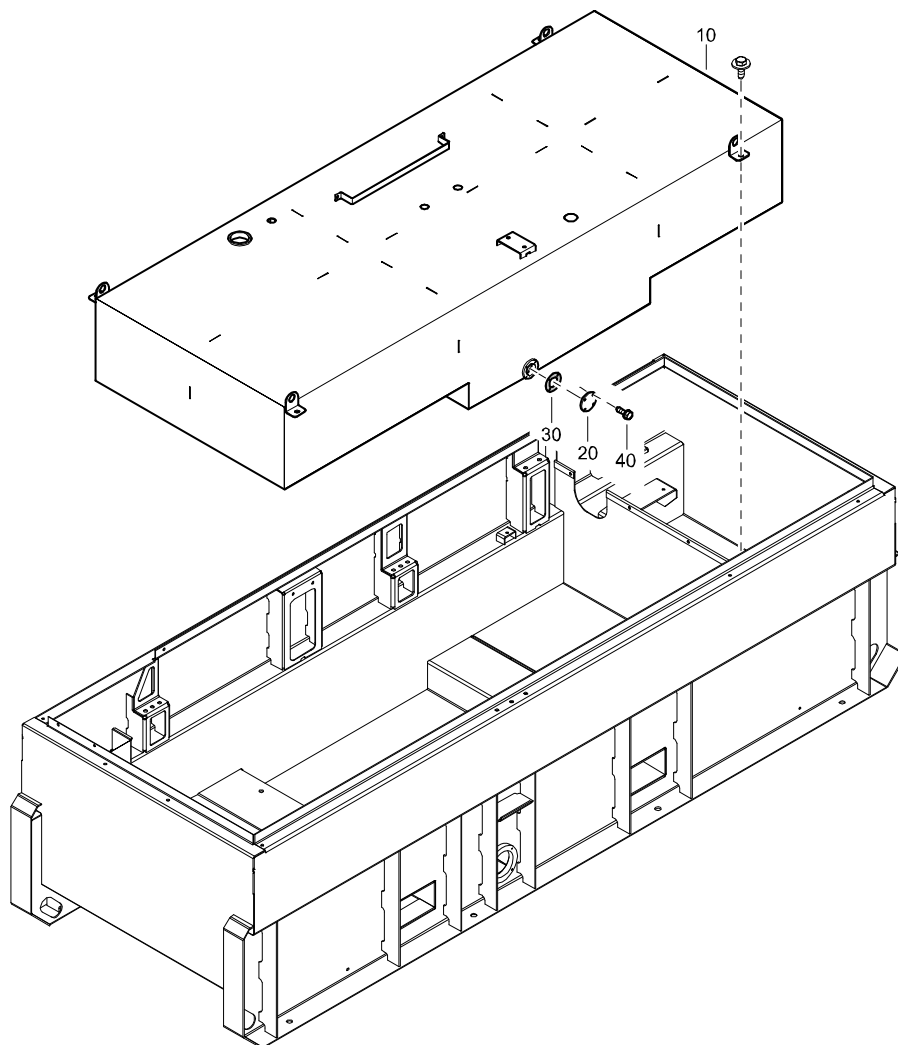
REF	PART NUMBER	DESIGNATION	QTY
-	1310 0712 00	FRAME ASSEMBLY (From page 26)	
•10	1310 4965 82	FRAME ASSEMBLY (For details see page 56)	1
20	1310 4970 82	FUEL TANK ASSEMBLY (For details see page 57)	1
•30	1310 6575 00	FUEL FILL NECK	1
•40	1310 4974 01	SUPPORT	1
•50	1310 4973 01	SUPPORT	1
•60	1310 4541 00	MOUNT CUBICLE	1

FRAME ASSEMBLY - STANDARD



REF	PART NUMBER	DESIGNATION	QTY
-	1310 4965 82	FRAME ASSEMBLY (From page 55)	
•10	1310 4965 02	FRAME	1
•20	1626 0593 00	CLAMP	1
•30	1310 4637 00	GASKET	1
•40	1310 4857 00	COVER	1
•50	1310 4367 00	PLATE	1
•60	1310 4368 00	GASKET	1
•70	1619 5898 01	SELF TAP SCREW	6
•80	0147 1404 03	HEX HEAD SCREW	2
•90	0301 2358 00	FLAT WASHER	2
•100	1619 2766 00	HEX HEAD SCREW	4
•110	1626 1805 01	SEAL	15

FRAME ASSEMBLY - STANDARD



REF	PART NUMBER	DESIGNATION	QTY
-	1310 4970 82	FUEL TANK ASSEMBLY (From page 55)	
•10	1310 4970 02	FUEL TANK	1
•20	1604 4344 00	FLANGE	1
•30	1604 4345 00	SEAL AC	1
•40	1619 5898 01	SELF TAP SCREW	4

