


Registration code

	Collection: ASL 23
	Tab: 73
	Sequence: 0998
1991-04	

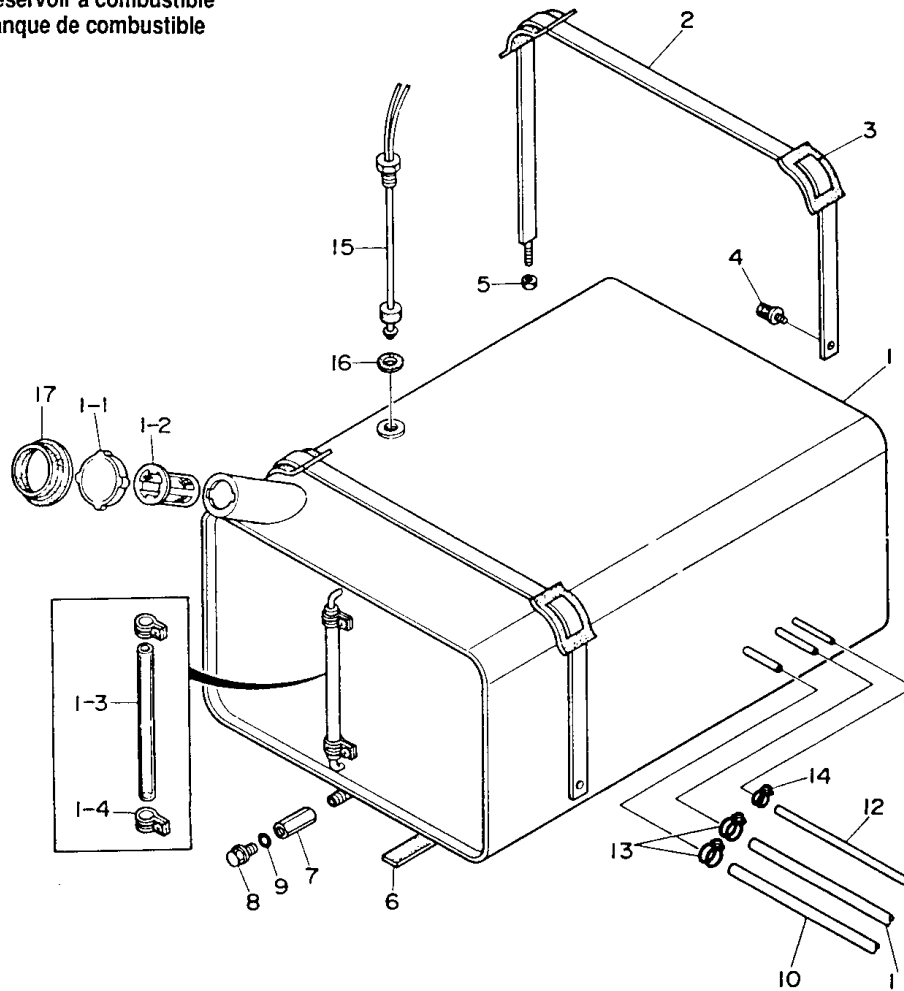
Parts list for Generators
Teilliste für Generatoren
Onderdelenlijst voor Generatoren
Liste de pièces pour Génératrices
Reservdelsförteckning för Generatorer
Lista de las partes para Generadores

QAS180 Kd

Page	Contents
Blz.	Inhoud
Sida	Innehåll
Seite	Inhaltsverzeichnis
Pag.	Table des matières
Pág.	Indice

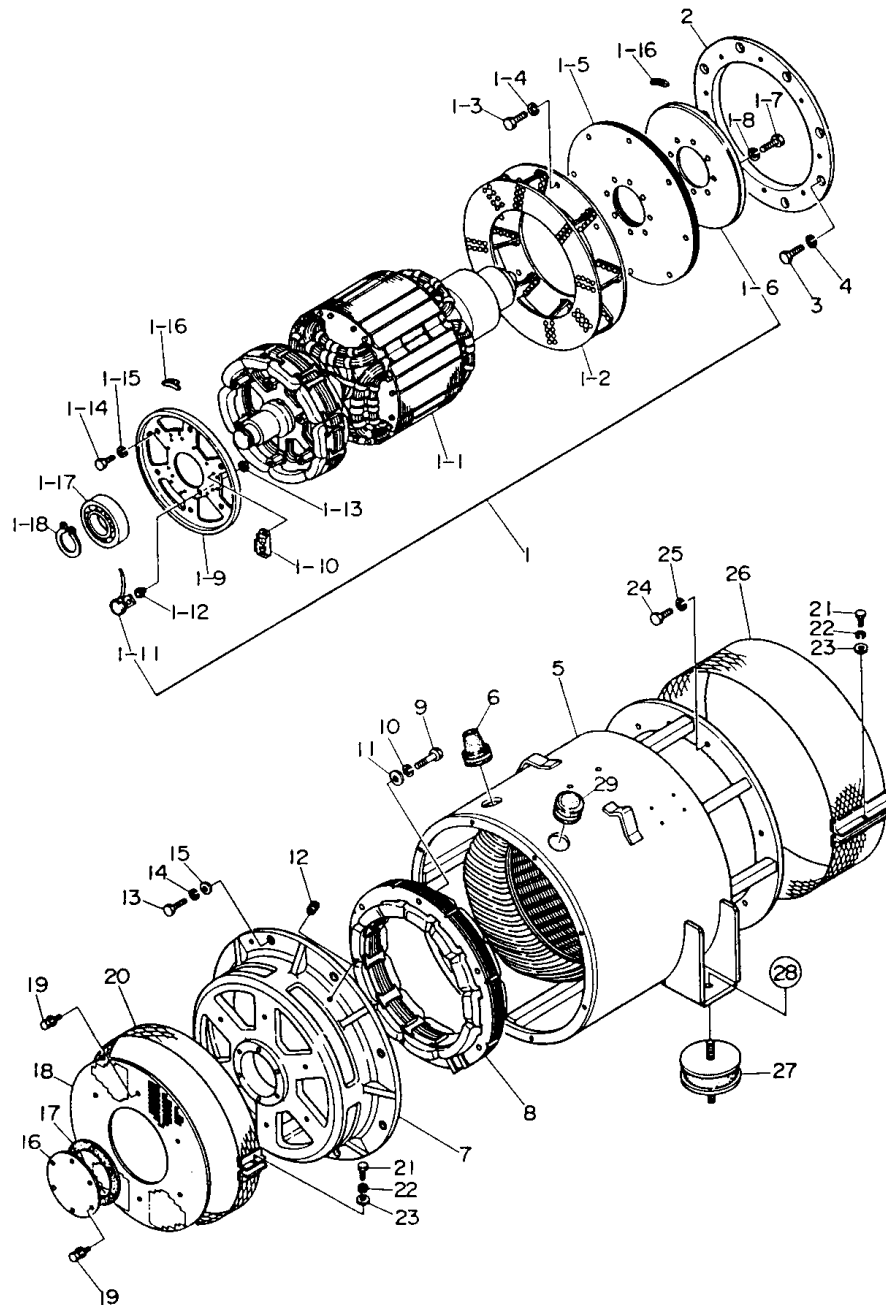
3	Fuel tank Brandsloftank Bränsletank Kraftstoffbehälter Réservoir à combustible Tanque de combustible
5	Generator parts Generatoronderdelen Generatordelar Generatorteile Pièces de génératrice Partes del generador
7	Control panel Bedieningsbord Manöverpanel Armaturenbrett Panneau de commande Panel de control
9	Engine cooling system Motorkoelsysteem Motorkylsystem Motorkühlsystem Système de refroidissement du moteur Sistema de refrigeración del motor
11	Engine operating panel Motorbedieningspaneel Motorns kontrollpanel Motorbedienungstafel Tableau, marche du moteur Panel de funcionamiento del motor
12	Battery connections Batterij-aansluitingen Batterianslutningar Batterieanschlüsse Connexions de batterie Conexiones de batería
13	Exhaust Uitlaat Avgasning Auspuff Echappement Escape
15	Bodywork Karrosserie Karosseri Karosserie Capotage Carrocería

Fuel tank
 Brandstoftank
 Bränsletank
 Kraftstoffbehälter
 Réservoir à combustible
 Tanque de combustible



Ref.	A	B	C	D	Designation
1	2914 6100 00		1	Fuel tank
1.1	2900 5179 00	•	1	Cap
x	2900 6978 00	1)	1	Cap with key
x	2912 6004 00		1	Spare key
1.2	2900 5180 00	•	1	Strainer
2	2914 6101 00		2	Strap
3	2914 6102 00		4	Pad
4	0147 1323 03		2	Bolt
5	0266 2110 00		2	Nut

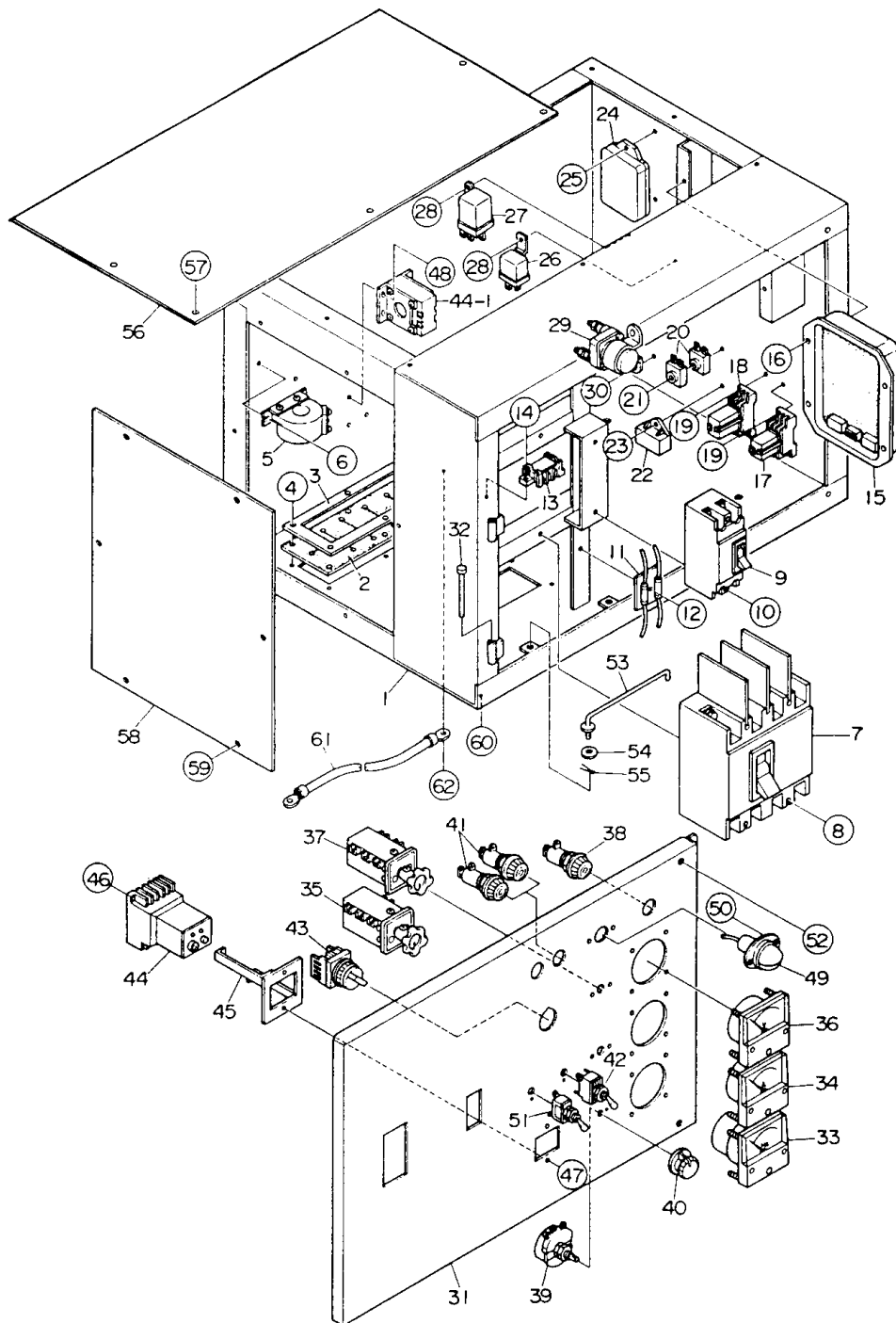
Ref.	A	B	C	D	Designation
6	2914 6103 00		4	Pad
15	2900 5396 00		1	Level device
17	2900 5193 00		1	Seal
1) Optional / Als optie / Extra utrustning / Extra Ausstattung / Optionnel / Como opción					
56_103_0_0_0					



Generator parts
 Generatoronderdelen
 Generatordelar
 Generatorteile
 Pièces de génératrice
 Partes del generador

Ref.	A	B	C	D	Designation	Ref.	A	B	C	D	Designation
-	2914 6033 80		1	Generator ass'y	2	2914 6046 00	•	1	Coupling ring
1	2914 6045 00	•	1	Rotor ass'y	3	0147 1402 03	•	8	Bolt
1.1	***	••	1	Field ass'y	5	2914 6047 00	•	1	Stator ass'y
1.2	2900 6875 00	••	1	Fan	6	2900 6168 00	•	1	Grommet
1.3	0147 1403 03	••	8	Bolt	7	2900 6892 00	•	1	Bearing housing
1.5	2900 6876 00	••	9	Coupling disk	8	2900 6893 00	•	1	Field ass'y, exciter
1.6	2900 6877 00	••	1	Flywheel	9	0147 1369 03	•	6	Bolt
1.9	2900 6878 00	••	1	Base plate	10	0333 2230 00	•	6	Washer
1.10	2900 6055 00	••	3	Rectifier	12	2900 6912 00	•	1	Grommet
1.11	2900 6879 00	••	1	Surge absorber	14	0333 2236 00	•	8	Spring washer
1.12	2900 6880 00	••	1	Isolator	16	2900 6895 00	•	1	Cover
1.13	2900 6881 00	••	1	Isolator	17	2900 6896 00	•	1	Gasket
1.14	0147 1398 03	••	6	Bolt	18	2900 6897 00	•	1	Cover
1.15	0333 2230 00	••	6	Spring washer	20	2900 6898 00	•	1	Cover
1.16	2900 5411 00	••	1	Counterweight kit	21	0147 1250 03	•	2	Bolt
x	2900 5411 05	•••	2	Counterweight	22	0333 2219 00	•	2	Spring washer
				- 5 g	24	0147 1402 03	•	12	Bolt
x	2900 5411 10	•••	2	Counterweight	26	2914 6048 00	•	1	Fan guard
				- 10 g	27	2900 5150 00	•	2	Antivibration pad
x	2900 5411 15	•••	2	Counterweight	28	0266 2114 00	•	4	Nut
				- 15 g	29	2900 5160 00	•	1	Grommet
x	2900 5411 20	•••	2	Counterweight						
				- 20 g						
1.17	2900 6938 00	••	1	Bearing						

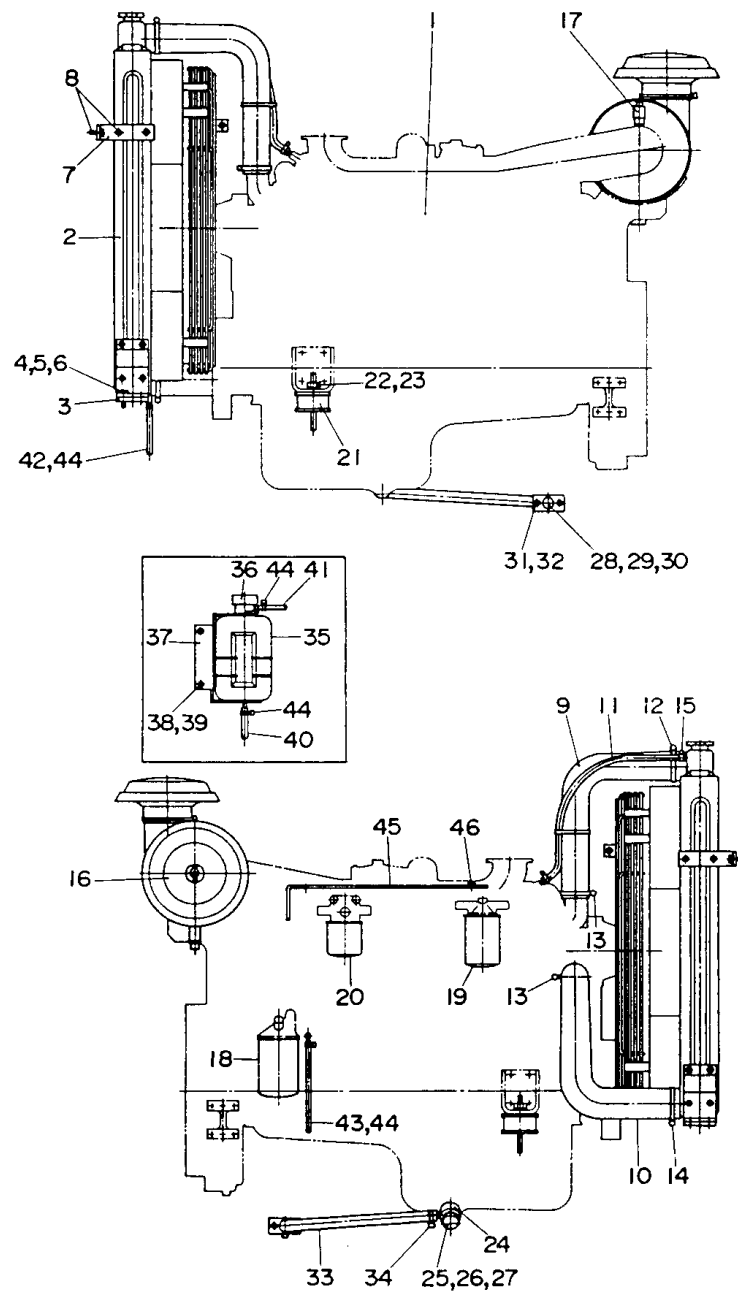
56_097_0_0_0



Control panel
 Bedieningsbord
 Manöverpanel
 Armaturen Brett
 Panneau de commande
 Panel de control

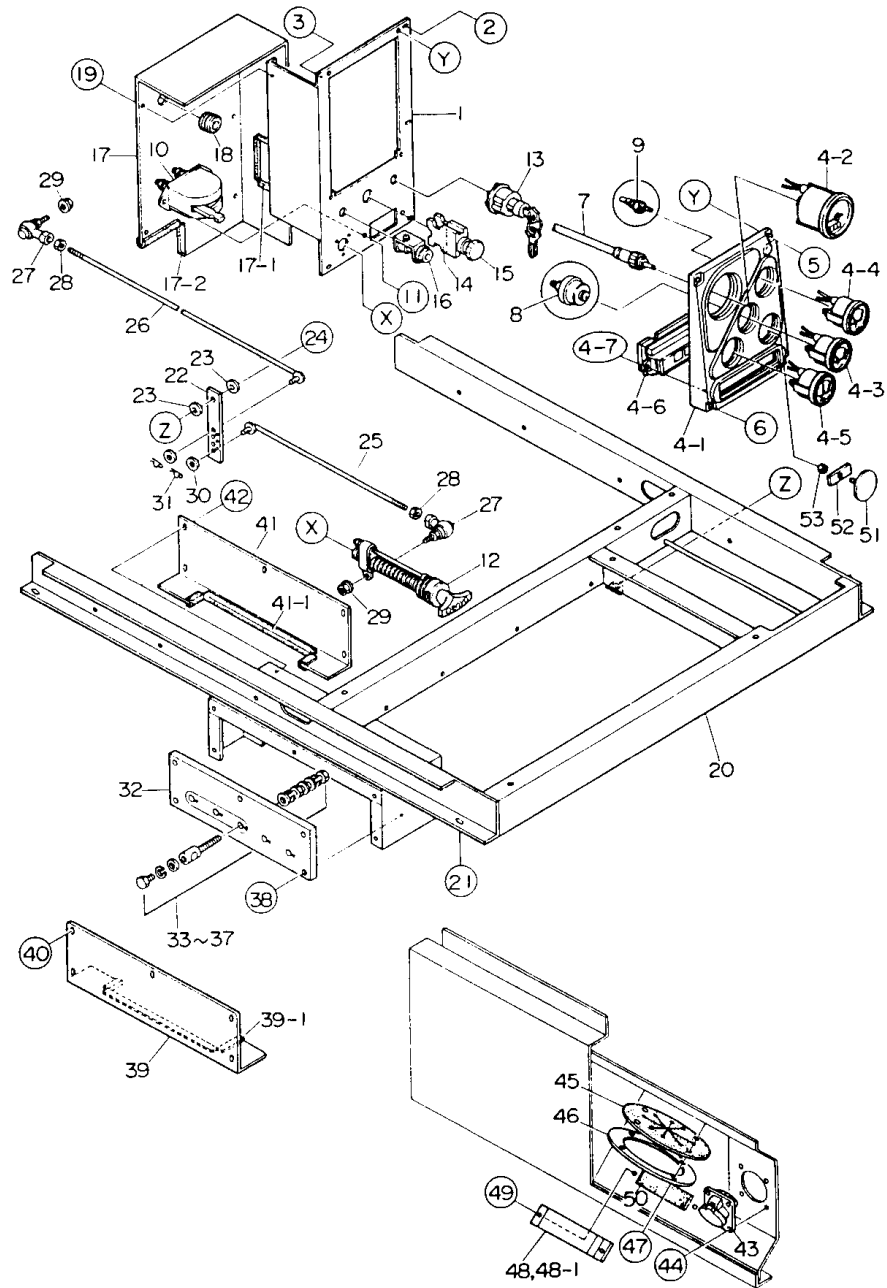
Ref.	A	B	C	D	Designation	Ref.	A	B	C	D	Designation
1	2914 6049 00			1	Control panel	34	2914 6056 00			1	Ammeter
2	2900 5781 00			2	Grommet	35	2900 5089 00			1	Switch
3	2900 5782 00			2	Retainer	36	2900 5086 00			1	Voltmeter
4	0147 1247 03			12	Bolt	37	2900 5090 00			1	Switch
5	2914 6050 00			2	Transformer	38	2900 5095 00			1	Lamp holder
6	0160 6042 00			4	Screw	39	2900 5107 00			1	Rheostat
7	2914 6051 00			1	Circuit breaker	40	2900 5108 00			1	Knob
8	0160 6049 00			4	Screw	41	2900 5095 00			2	Lamp holder
x	0333 2212 00			4	Lock washer	42	2900 5103 00			1	Switch
9	2914 6052 00			1	Circuit breaker	43	2900 6248 00			1	Switch
10	0160 6054 00			2	Screw	44	2900 6134 00			1	Relay
x	0333 2212 00			2	Spring washer	44.1	***			1	Transformer
11	2900 5164 00			1	Resistor	45	2900 6067 00			1	Bracket
13	2900 5098 00			1	Terminal block	47	0160 6039 00			2	Screw
14	0160 6042 00			2	Screw	48	0160 6042 00			2	Screw
15	2900 5099 00			1	Volage regul.	49	2900 5016 00			1	Light
17	2900 6249 00			1	Relay	51	2900 5104 00			1	Switch
18	2900 6240 00			1	Relay	53	2900 5200 00			1	Stay
19	0160 6042 00			4	Screw	56	2914 6057 00			1	Cover
20	2900 6239 00			2	Rectifier	57	0147 1246 03			8	Bolt
22	2900 5374 00			1	Unit, batt. sensor	58	2914 6058 00			1	Panel
24	2914 6053 00			1	Timer	59	0147 1246 03			6	Bolt
26	2900 5373 00			1	Relay	60	0147 1323 03			4	Bolt
27	2900 6251 00			1	Relay	61	2900 6159 00			1	Earth cable
29	2914 6054 00			1	Relay	62	0147 1323 03			1	Bolt
31	2914 6055 00			1	Control panel						
32	2900 5153 00			2	Pin						
33	2900 5087 00			1	Frequency meter						

56_098_0_0_0



Engine cooling system
 Motorkoelsysteem
 Motorkylsystem
 Motorkühlsystem
 Système de refroidissement du moteur
 Sistema de refrigeración del motor

Ref.	A	B	C	D	Designation	Ref.	A	B	C	D	Designation
1	2900 6979 00			1	Engine KOMATSU SA6D108	x	2914 6040 00			1	Filter element KOMATSU 600- 181-8600
2	2900 6255 00			1	Radiator KOMATSU 6151- 61-9350	17	2914 6063 00			1	Warning device KOMATSU 600- 815-7930
3	2900 6266 00			2	Antivibration pad KOMATSU 6151- 61-9340	18	2900 5120 00			1	Oil filter element
5	0266 2112 00			4	Nut	19	2900 5352 00			1	Fuel filter element
6	0333 2236 00			4	Spring washer	20	2914 6043 00			1	Corros. resistor elem.
7	2914 6059 00			2	Bracket	21	2900 5390 00			2	Antivibration pad
9	2914 6060 00			1	Hose KOMATSU 6221- 61-9320	22	0266 2114 00			4	Nut
10	2914 6061 00			1	Hose KOMATSU 6221- 61-9330	23	0333 2243 00			4	Spring washer
16	2914 6039 00			1	Air filter KOMATSU 600- 181-8230	33	2914 6064 00			1	Hose
						35	2900 6271 00			1	Water tank
						36	2900 6273 00			1	Cap
						37	2914 6226 00			1	Bracket
						45	2914 6068 00			1	Support
						46	0147 1360 03			2	Bolt
						56_099_0_0_0					

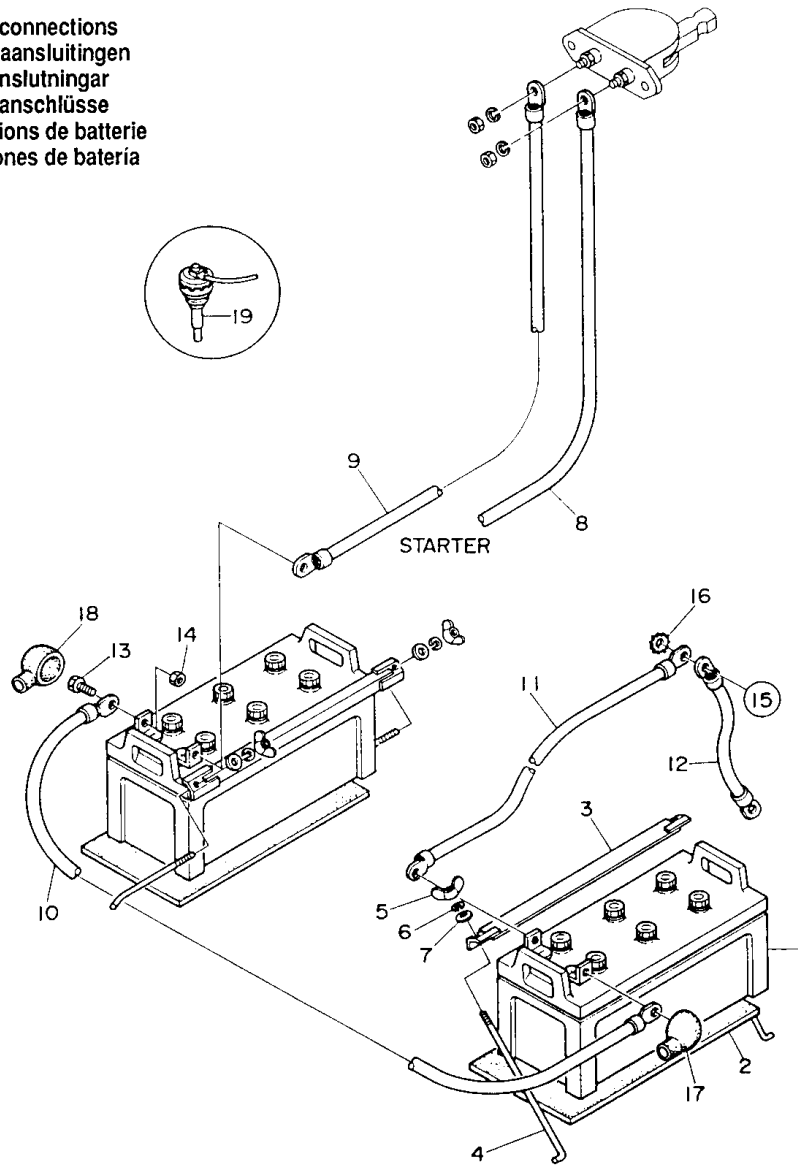


Engine operating panel
 Motorbedieningspaneel
 Motors kontrollpanel
 Motorbedienungstafel
 Tableau, marche du moteur
 Panel de funcionamiento del motor

Ref.	A	B	C	D	Designation	Ref.	A	B	C	D	Designation
1	2914 6069 00		1	Bracket	17	2914 6081 00		1	Cover
4	2914 6070 00		1	Fascia panel	20	2914 6082 00		1	Support
x	2914 6071 00		1	Wire harness	22	2914 6083 00		1	Link
4.1	2914 6072 00		1	Fascia panel	25	2914 6084 00		1	Link
4.2	2914 6073 00		1	Tachometer	26	2914 6085 00		1	Link
4.3	2914 6074 00		1	Pressure gauge	27	2900 6142 00		2	Ball joint
4.4	2914 6075 00		1	Temperature gauge	32	2900 6773 00		1	Terminal board
4.5	2914 607600		1	Ammeter	33	2900 5162 00		5	Terminal
4.6	2914 6077 00		1	Indicator	39	2900 6812 00		1	Cover
7	2914 6078 00		1	Cable	41	2900 6813 00		1	Cover
8	2914 6079 00		1	Unit, oil press.	43	1089 0494 46		1	Cable box
9	2914 6080 00		1	Unit, water temp.	x	1089 0495 46		1	Cable connector
10	2900 5124 00		1	Switch	45	2900 5185 00		1	Grommet
12	2900 5181 00		1	Speed regulator	46	2900 5184 00		1	Retainer
13	2900 5123 00		1	Switch	48	2900 5195 00		1	Clamp
					KOMATSU 600-815-5390	51	2914 6086 00		1	Cover
x	2912 6001 00		1	Key	52	2914 6087 00		1	Clamp
14	1089 0362 16		1	Push button						
15	***	•	1	Knob						
16	2900 5125 00		1	Light						

56_100_0_0_0

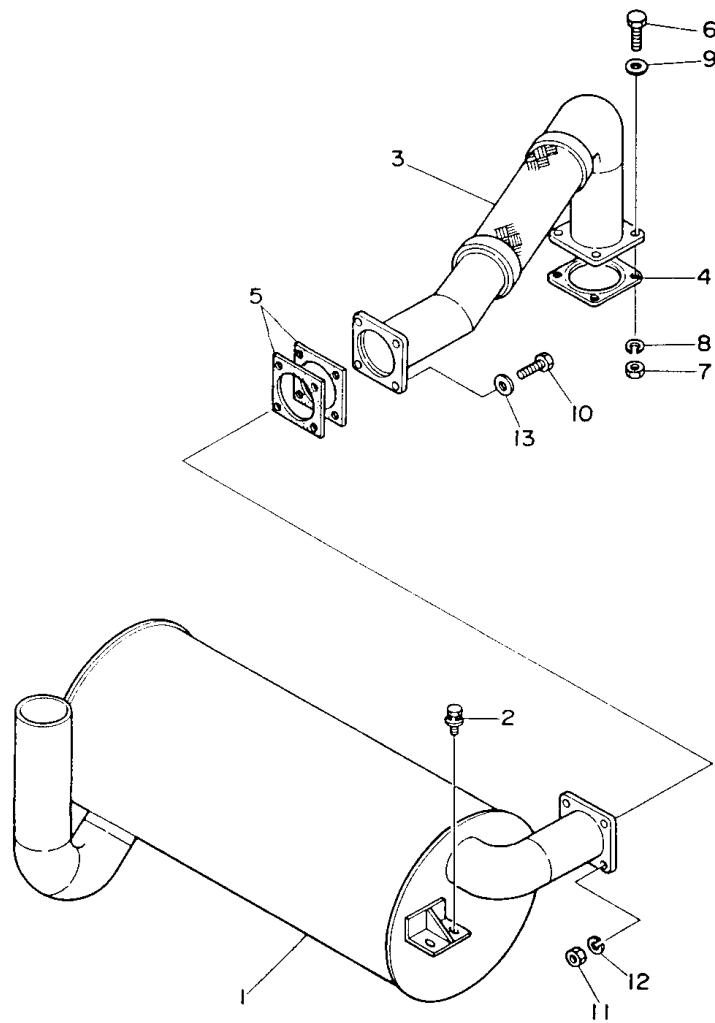
Battery connections
 Batterij-aansluitingen
 Batterianslutningar
 Batterieanschlüsse
 Connexions de batterie
 Conexiones de batería



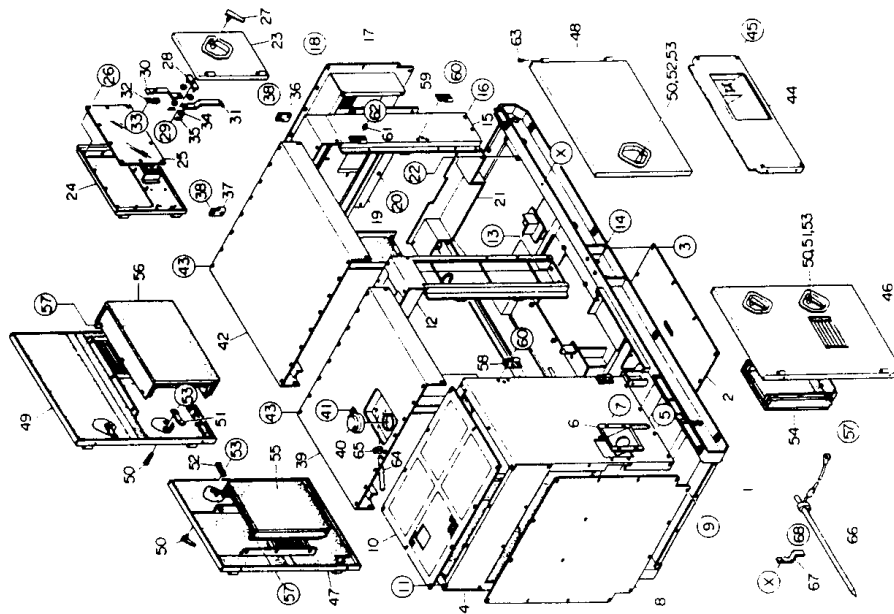
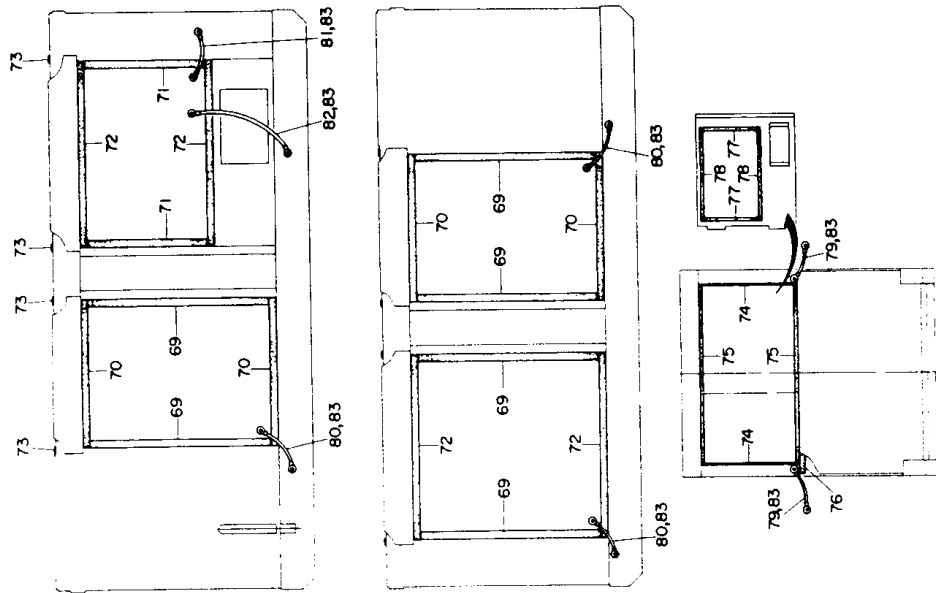
Ref.	A	B	C	D	Designation	Ref.	A	B	C	D	Designation
1	2914 6088 00			2	Battery	13	0147 1363 03			4	Bolt
2	2914 6089 00			2	Battery saddle	14	0266 2111 00			4	Nut
3	2900 5172 00			2	Clamp	15	0147 1400 03			1	Bolt
4	2914 6090 00			4	Tie rod	x	0333 2236 00			1	Lock washer
5	0296 1110 00			4	Wing nut	17	2900 5441 00			2	Shroud
6	0333 2225 00			4	Lock washer	18	2900 5442 00			2	Shroud
8	2914 6091 00			1	Battery cable	19	2900 5142 00			1	Sensor
9	2914 6092 00			1	Battery cable						
10	2914 6093 00			1	Battery cable						
11	2914 6094 00			1	Battery cable						
12	2914 6095 00			1	Earth cable						

56_101_0_0

Exhaust
Uitlaat
Avgasning
Auspuff
Echappement
Escape



Ref.	A	B	C	D	Designation	Ref.	A	B	C	D	Designation
1	2914 6096 00		1	Muffler	5	2914 6099 00		2	Gasket
3	2914 6097 00		1	Exhaust pipe						
4	2914 6098 00		1	Gasket						
				KOMATSU 6221-11-5890						



Bodywork
Karosserie
Karosseri
Karosserie
Capotage
Carroceria

Ref.	A	B	C	D	Designation	Ref.	A	B	C	D	Designation
1	2914 6106 00			1	Frame	43	0147 1323 03			40	Bolt
2	2914 6107 00			1	Bottom plate	44	2914 6126 00			1	Panel
3	0147 1323 03			10	Bolt	45	0147 1334 03			4	Bolt
4	2914 6108 00			1	Panel	x	0333 2225 00			4	Spring washer
6	2900 5194 00			1	Bracket	x	0301 2335 00			4	Washer
8	2914 6109 00			1	Plate	46	2914 6127 00			1	Door
9	0147 1323 03			16	Bolt	47	2914 6128 00			1	Door
10	2914 6110 00			1	Grating	48	2914 6129 00			1	Door
11	0147 1323 03			10	Bolt	49	2914 6130 00			1	Door
12	2914 6111 00			1	Lifting beam	50	2900 5187 00			7	Handle
15	2914 6112 00			1	Panel	51	2900 5191 00			4	Latch
17	2914 6113 00			1	Cover	52	2900 5190 00			3	Latch
18	0147 1323 03			14	Bolt	53	0147 1323 02			7	Bolt
19	2914 6114 00			1	Panel	54	2914 6131 00			1	Panel
20	0147 1323 03			9	Bolt	55	2914 6132 00			1	Panel
21	2914 6115 00			1	Panel	56	2914 6133 00			1	Panel
22	0147 1323 03			4	Bolt	57	0147 1323 02			18	Bolt
23	2914 6116 00			1	Door	58	2914 6134 00			4	Hinge
24	2914 6117 00			1	Door	59	2914 6135 00			4	Hinge
25	2914 6118 00			1	Window	60	0147 1323 02			16	Bolt
27	2900 5187 00			1	Handle	62	2900 6114 00			10	Seal
28	2914 6119 00			1	Link	63	2900 5183 00			12	Plug
30	2914 6120 00			1	Latch	64	2914 6136 00			1	Hose
31	2914 6121 00			1	Latch	66	2900 6237 00			1	Earth pin
32	2900 5175 00			1	Spring	67	2900 6205 00			1	Clamp
33	0160 6049 00			2	Screw	79	2900 6115 00			2	Earth cable
36	2914 6122 00			2	Hinge	80	2900 6750 00			3	Earth cable
37	2914 6123 00			2	Hinge	81	2900 6751 00			1	Earth cable
38	0147 1323 03			6	Bolt	82	2914 6137 00			1	Earth cable
39	2914 6124 00			1	Roof						
40	2900 5159 00			1	Cap						
41	0160 6083 00			2	Screw						
42	2914 6125 00			1	Roof						

56_104_0_0_0

—

—

—

—