

Parts List
For Portable Generators

QAS 30 Jd USA

QAS 30 Jd USA

ATLAS COPCO - COMPRESSORS INC.
www.atlascopco.com

PARTS INDEX

PARTS INDEX

PART	PAGE	PART	PAGE
A		E	
ADAPTER	22	EXHAUST SHIELD.....	23
ADAPTER-FAN	19	EXHAUST SYSTEM.....	23
AIR FILTER	24	F	
AIR FILTER ELEMENT	24	FAN.....	19
AIR FILTER SAFETY CARTRIDGE	24	FAN GUARD.....	19
AIR INLET.....	24	FANBOX	19
ALTERNATOR	25	FILTER	20
ALTERNATOR AND ACCESSORIES	25	FLANGE.....	20, 29
AMPERE METER	47	FRAME.....	15, 29
AUXILIARY RELAY	44	FRAME AND MOUNTS	15
B		FUEL SYSTEM.....	20, 21
BAFFLE	16	FUEL GAUGE.....	20
BALL VALVE	22	FUEL TANK.....	20, 39
BATTERY	26	FUNNEL.....	20, 41
BATTERY CABLE	26	FUSE.....	44, 45
BATTERY CLAMP	26	FUSE HOLDER.....	44, 45
BEAM.....	30, 31, 32, 33, 36	G	
BLOCK.....	25	GROMMET	18, 39, 44
BODYWORK.....	16, 17	H	
BOX.....	44	HANDLE	34, 35, 37
BUFFER	15	HEXAGON PLUG	22
BULB.....	47	HINGE	31, 32, 33, 34, 35, 37, 46
C		HOSE	18, 19, 20, 24
CABLE	26	HOSE ASSEMBLY	22
CABLE GLAND	44, 45, 47	HOSE CLAMP	19, 20, 24, 26
CABLE TY	18, 19, 25, 26	HOUSE MARK	37
CAP	16	HOUSING.....	44
CIRCUIT BREAKER.....	44, 46, 47	I	
CLAMP	25, 26	INFORMATION LABEL	37
CLIP.....	22	ISOLATOR	45
CONTACTOR	44	J	
CONTROL PANEL.....	40, 47	JUMPER BAR	45
COOLING SYSTEM	19	K	
CORNER.....	16, 30, 31, 32, 33	KIT COOLANT RECOVERY SYSTEM.....	19
COVER.....	20	L	
COVER PLATE.....	44, 46	LABEL.....	32, 33, 38
CUBICLE	40, 44	LABEL EMERGENCY STOP	46
CUBICLE AND ACCESSORIES	27	LABEL SERVICE PAK.....	37
CUBICLE ASSEMBLY	27, 40	LABEL TERMINAL BOARD	46
CONTROLLER.....	47	LIFTING BALE.....	15
CURRENT TRANSFORMER	44	LOCK.....	36
D		M	
DATA PLATE	28	MALE CONTACT.....	47
DIODE.....	47	MALE INSERT	47
DISTANCE SLEEVE.....	47	MARKINGS	28
DOCUMENT HOLDER	16	METAL HOSE.....	23
DOOR	16, 34, 35, 36, 37	MUFFLER	23
E		O	
ELBOW	39	OIL SYSTEM.....	22
ELECTRICAL SYSTEM	26		
EMERGENCY STOP.....	44		
ENGINE	18		
ENGINE AND ACCESSORIES	18		
ENGINE OIL.....	14		
EXHAUST PIPE	23		

PARTS INDEX

PART	PAGE	PART	PAGE
P			
PANEL.....	16, 38		
PANELLIGHT.....	47		
PAROIL.....	14		
PIPE COUPLING.....	26		
PLATE.....	41, 45, 46		
PLATE ALTERNATOR.....	25		
PLATE ASSEMBLY.....	40, 45		
PLATE RADIATOR.....	19		
PLUG.....	16, 29, 39, 47		
POTMETER.....	47		
PRESSURE SENSOR.....	26		
PRESSURE SWITCH.....	26		
PROFILE.....	36		
PROTECTION COVER.....	46		
R			
RADIATOR.....	19		
RAIL.....	44, 45, 46, 47		
RAIN CAP.....	23		
RECEPTACLE.....	46		
RELAY.....	26, 47		
RESISTOR.....	47		
ROOF.....	16, 36		
S			
SCREEN.....	46		
SELECTOR SWITCH.....	25, 47		
SERVICE PAK.....	13		
SOCKET.....	47		
SOCKET PANEL.....	40, 46		
SPACER.....	30, 31		
SPINDLE LOCK.....	47		
STRAP.....	20		
STRIP.....	30, 31, 42, 43		
SUBFRAME.....	15		
SUPPORT.....	18, 24, 36		
SUPPORT FUEL FILTER.....	20		
T			
TAPE.....	20, 42, 43		
TEMPERATURE SENSOR.....	26		
TEMPERATURE SWITCH.....	26		
TERMINAL.....	44, 45, 46, 47		
TERMINAL BOARD.....	46		
TERMINAL INSULATOR.....	26		
TRIP COIL.....	44		
TUBE.....	19, 39		
V			
VALVE.....	19		
VOLTAGE REGULATOR.....	45		
VOLTAGE SWITCH.....	47		
VOLTMETER.....	47		
W			
WINDOW.....	37		
WIRE AND TUBE CLAMP.....	19		
WIRING HARNESS.....	26		

Warranty and Liability Limitation

Use only authorized parts.

Any damage or malfunction caused by the use of unauthorized parts is not covered by Warranty or Product Liability.

The manufacturer does not accept any liability for any damage arising from modifications, additions or conversions made without the manufacturer's approval in writing.

Copyright 2004, Atlas Copco Airpower n.v., Antwerp, Belgium.

Any unauthorized use or copying of the contents or any part thereof is prohibited.

This applies in particular to trademarks, model denominations, part numbers and drawings.

Limitation de garantie et de responsabilité

Utiliser uniquement les pièces homologuées.

Tout dommage ou mauvais fonctionnement dû à l'utilisation de pièces non homologuées n'est pas couvert par la garantie ou la responsabilité des produits défectueux.

Le fabricant décline toute responsabilité en cas de dommage faisant suite à des modifications, des ajouts ou des conversions effectués sans l'accord écrit du fabricant.

Copyright 2004, Atlas Copco Airpower n.v., Antwerp, Belgique.

Toute utilisation ou copie du contenu, ou d'une partie de celui-ci, non autorisée est interdite.

Cette interdiction s'applique en particulier aux marques de commerce, aux dénominations des modèles, aux numéros des pièces et aux schémas.

Limitación de garantía y responsabilidad

Use sólo piezas autorizadas.

La garantía o responsabilidad del producto no cubre ningún daño o funcionamiento defectuoso provocado por el uso de piezas no autorizadas.

El fabricante no acepta ninguna responsabilidad por los daños provocados por modificaciones, adiciones o conversiones realizadas sin la aprobación por escrito del fabricante.

Derechos de reproducción 2004, Atlas Copco Airpower n.v., Amberes, Bélgica.

Está prohibida toda utilización o reproducción total o parcial no autorizada de estos contenidos,

en especial de las marcas registradas, denominaciones de modelos, números de piezas y planos.

1. SAFETY PRECAUTIONS FOR PORTABLE GENERATORS

To be read attentively and acted accordingly before towing, lifting, operating, performing maintenance or repairing the generator

1.1 INTRODUCTION

The policy of Atlas Copco is to provide the users of their equipment with safe, reliable and efficient products. Factors taken into account are among others:

- the intended and predictable future use of the products, and the environments in which they are expected to operate,
- applicable rules, codes and regulations,
- the expected useful product life, assuming proper service and maintenance,
- providing the manual with up-to-date information.

Before handling any product, take time to read the relevant instruction manual. Besides giving detailed operating instructions, it also gives specific information about safety, preventive maintenance, etc.

Keep the manual always at the unit location, easy accessible to the operating personnel.

See also the safety precautions of the engine and possible other equipment, which are separately sent along or are mentioned on the equipment or parts of the unit.

These safety precautions are general and some statements will therefore not always apply to a particular unit.

Only people that have the right skills should be allowed to operate, adjust, perform maintenance or repair on Atlas Copco equipment. It is the responsibility of management to appoint operators with the appropriate training and skill for each category of job.

Skill level 1: Operator

An operator is trained in all aspects of operating the unit with the push-buttons, and is trained to know the safety aspects.

Skill level 2: Mechanical technician

A mechanical technician is trained to operate the unit the same as the operator. In addition, the mechanical technician is also trained to perform maintenance and repair, as described in the instruction manual, and is allowed to change settings of the control and safety system. A mechanical technician does not work on live electrical components.

Skill level 3: Electrical technician

An electrical technician is trained and has the same qualifications as both the operator and the mechanical technician. In addition, the electrical technician may carry out electrical repairs within the various enclosures of the unit. This includes work on live electrical components.

Skill level 4: Specialist from the manufacturer

This is a skilled specialist sent by the manufacturer or its agent to perform complex repairs or modifications to the equipment.

In general it is recommended that not more than two people operate the unit, more operators could lead to unsafe operating conditions. Take necessary steps to keep unauthorized persons away from the unit and eliminate all possible sources of danger at the unit.

When handling, operating, overhauling and/or performing maintenance or repair on Atlas Copco equipment, the mechanics are expected to use safe engineering practices and to observe all relevant local safety requirements and ordinances. The following list is a reminder of special safety directives and precautions mainly applicable to Atlas Copco equipment.

Neglecting the safety precautions may endanger people as well as environment and machinery:

- endanger people due to electrical, mechanical or chemical influences,
- endanger the environment due to leakage of oil, solvents or other substances,
- endanger the machinery due to function failures.

All responsibility for any damage or injury resulting from neglecting these precautions or by non-observance of ordinary caution and due care required in handling, operating, maintenance or repair, also if not expressly mentioned in this instruction manual, is disclaimed by Atlas Copco.

The manufacturer does not accept any liability for any damage arising from the use of non-original parts and for modifications, additions or conversions made without the manufacturer's approval in writing.

If any statement in this manual does not comply with local legislation, the stricter of the two shall be applied.

Statements in these safety precautions should not be interpreted as suggestions, recommendations or inducements that it should be used in violation of any applicable laws or regulations.

1.2 GENERAL SAFETY PRECAUTIONS

- 1 The owner is responsible for maintaining the unit in a safe operating condition. Unit parts and accessories must be replaced if missing or unsuitable for safe operation.
- 2 The supervisor, or the responsible person, shall at all times make sure that all instructions regarding machinery and equipment operation and maintenance are strictly followed and that the machines with all accessories and safety devices, as well as the consuming devices, are in good repair, free of abnormal wear or abuse, and are not tampered with.
- 3 Whenever there is an indication or any suspicion that an internal part of a machine is overheated, the machine shall be stopped but no inspection covers shall be opened before sufficient cooling time has elapsed; this to avoid the risk of spontaneous ignition of oil vapour when air is admitted.
- 4 Normal ratings (pressures, temperatures, speeds, etc.) shall be durably marked.
- 5 Operate the unit only for the intended purpose and within its rated limits (pressure, temperature, speeds, etc.).
- 6 The machinery and equipment shall be kept clean, i.e. as free as possible from oil, dust or other deposits.
- 7 To prevent an increase in working temperature, inspect and clean heat transfer surfaces (cooler fins, intercoolers, water jackets, etc.) regularly. See the maintenance schedule.
- 8 All regulating and safety devices shall be maintained with due care to ensure that they function properly. They may not be put out of action.
- 9 Pressure and temperature gauges shall be checked regularly with regard to their accuracy. They shall be replaced whenever outside acceptable tolerances.
- 10 Safety devices shall be tested as described in the maintenance schedule of the instruction manual to determine that they are in good operating condition.
- 11 Mind the markings and information labels on the unit.
- 12 In the event the safety labels are damaged or destroyed, they must be replaced to ensure operator safety.
- 13 Keep the work area neat. Lack of order will increase the risk of accidents.
- 14 When working on the unit, wear safety clothing. Depending on the kind of activities these are: safety glasses, ear protection, safety helmet (including visor), safety gloves, protective clothing, safety shoes. Do not wear the hair long and loose (protect long hair with a hairnet), or wear loose clothing or jewelry.
- 15 Take precautions against fire. Handle fuel, oil and anti-freeze with care because they are inflammable substances. Do not smoke or approach with naked flame when handling such substances. Keep a fire-extinguisher in the vicinity.
- 16a **Portable generators (with earthing pin):**
Earth the generator as well as the load properly.
- 16b **Portable generators IT:**
Note: This generator is built to supply a sheer alternating current IT network.
Earth the load properly.

1.3 SAFETY DURING TRANSPORT AND INSTALLATION

To lift a unit, all loose or pivoting parts, e.g. doors and towbar, shall first be securely fastened.

Do not attach cables, chains or ropes directly to the lifting eye; apply a crane hook or lifting shackle meeting local safety regulations. Never allow sharp bends in lifting cables, chains or ropes.

Helicopter lifting is not allowed.

It is strictly forbidden to dwell or stay in the risk zone under a lifted load. Never lift the unit over people or residential areas. Lifting acceleration and retardation shall be kept within safe limits.

- 1 Before towing the unit:
 - check the towbar, the brake system and the towing eye. Also check the coupling of the towing vehicle,
 - check the towing and brake capability of the towing vehicle,
 - check that the towbar, jockey wheel or stand leg is safely locked in the raised position,
 - ascertain that the towing eye can swivel freely on the hook,
 - check that the wheels are secure and that the tyres are in good condition and inflated correctly,
 - connect the signalisation cable, check all lights and connect the pneumatic brake couplers,
 - attach the safety break-away cable or safety chain to the towing vehicle,
 - remove wheel chocks, if applied, and disengage the parking brake.
- 2 To tow a unit use a towing vehicle of ample capacity. Refer to the documentation of the towing vehicle.
- 3 If the unit is to be backed up by the towing vehicle, disengage the overrun brake mechanism (if it is not an automatic mechanism).
- 4 Never exceed the maximum towing speed of the unit (mind the local regulations).
- 5 Place the unit on level ground and apply the parking brake before disconnecting the unit from the towing vehicle. Unclip the safety break-away cable or safety chain. If the unit has no parking brake or jockey wheel, immobilize the unit by placing chocks in front of and/or behind the wheels. When the towbar can be positioned vertically, the locking device must be applied and kept in good order.
- 6 To lift heavy parts, a hoist of ample capacity, tested and approved according to local safety regulations, shall be used.
- 7 Lifting hooks, eyes, shackles, etc., shall never be bent and shall only have stress in line with their design load axis. The capacity of a lifting device diminishes when the lifting force is applied at an angle to its load axis.
- 8 For maximum safety and efficiency of the lifting apparatus all lifting members shall be applied as near to perpendicular as possible. If required, a lifting beam shall be applied between hoist and load.
- 9 Never leave a load hanging on a hoist.
- 10 A hoist has to be installed in such a way that the object will be lifted perpendicular. If that is not possible, the necessary precautions must be taken to prevent load-swinging, e.g. by using two hoists, each at approximately the same angle not exceeding 30° from the vertical.
- 11 Locate the unit away from walls. Take all precautions to ensure that hot air exhausted from the engine and driven machine cooling systems cannot be recirculated. If such hot air is taken in by the engine or driven machine cooling fan, this may cause overheating of the unit; if taken in for combustion, the engine power will be reduced.
- 12 Generators shall be stalled on an even, solid floor, in a clean location with sufficient ventilation. If the floor is not level or can vary in inclination, consult Atlas Copco.
- 13 The electrical connections shall correspond to local codes. The machines shall be earthed and protected against short circuits by fuses or circuit breakers.
- 14 Never connect the generator outlets to an installation which is also connected to a public mains.
- 15 Before connecting a load, switch off the corresponding circuit breaker, and check whether frequency, voltage, current and power factor comply with the ratings of the generator.

1.4 SAFETY DURING USE AND OPERATION

- 1 When the unit has to operate in a fire-hazardous environment, each engine exhaust has to be provided with a spark arrestor to trap incendiary sparks.
- 2 The exhaust contains carbon monoxide which is a lethal gas. When the unit is used in a confined space, conduct the engine exhaust to the outside atmosphere by a pipe of sufficient diameter; do this in such a way that no extra back pressure is created for the engine. If necessary, install an extractor. Observe any existing local regulations. Make sure that the unit has sufficient air intake for operation. If necessary, install extra air intake ducts.
- 3 When operating in a dust-laden atmosphere, place the unit so that dust is not carried towards it by the wind. Operation in clean surroundings considerably extends the intervals for cleaning the air intake filters and the cores of the coolers.
- 4 Never remove a filler cap of the cooling water system of a hot engine. Wait until the engine has sufficiently cooled down.
- 5 Never refill fuel while the unit is running, unless otherwise stated in the Atlas Copco Instruction Book (AIB). Keep fuel away from hot parts such as air outlet pipes or the engine exhaust. Do not smoke when fuelling. When fuelling from an automatic pump, an earthing cable should be connected to the unit to discharge static electricity. Never spill nor leave oil, fuel, coolant or cleansing agent in or around the unit.
- 6 All doors shall be shut during operation so as not to disturb the cooling air flow inside the bodywork and/or render the silencing less effective. A door should be kept open for a short period only e.g. for inspection or adjustment.
- 7 Periodically carry out maintenance works according to the maintenance schedule.
- 8 Stationary housing guards are provided on all rotating or reciprocating parts not otherwise protected and which may be hazardous to personnel. Machinery shall never be put into operation, when such guards have been removed, before the guards are securely reinstalled.
- 9 Noise, even at reasonable levels, can cause irritation and disturbance which, over a long period of time, may cause severe injuries to the nervous system of human beings.
When the sound pressure level, at any point where personnel normally has to attend, is:
 - below 70 dB(A): no action needs to be taken,
 - above 70 dB(A): noise-protective devices should be provided for people continuously being present in the room,
 - below 85 dB(A): no action needs to be taken for occasional visitors staying a limited time only,
 - above 85 dB(A): room to be classified as a noise-hazardous area and an obvious warning shall be placed permanently at each entrance to alert people entering the room, for even relatively short times, about the need to wear ear protectors,
 - above 95 dB(A): the warning(s) at the entrance(s) shall be completed with the recommendation that also occasional visitors shall wear ear protectors,
 - above 105 dB(A): special ear protectors that are adequate for this noise level and the spectral composition of the noise shall be provided and a special warning to that effect shall be placed at each entrance.
- 10 Insulation or safety guards of parts the temperature of which can be in excess of 80 °C (175 °F) and which may be accidentally touched by personnel shall not be removed before the parts have cooled to room temperature.
- 11 Never operate the unit in surroundings where there is a possibility of taking in flammable or toxic fumes.
- 12 If the working process produces fumes, dust or vibration hazards, etc., take the necessary steps to eliminate the risk of personnel injury.

- 13 When using compressed air or inert gas to clean down equipment, do so with caution and use the appropriate protection, at least safety glasses, for the operator as well as for any bystander. Do not apply compressed air or inert gas to your skin or direct an air or gas stream at people. Never use it to clean dirt from your clothes.
- 14 When washing parts in or with a cleaning solvent, provide the required ventilation and use appropriate protection such as a breathing filter, safety glasses, rubber apron and gloves, etc.
- 15 Safety shoes should be compulsory in any workshop and if there is a risk, however small, of falling objects, wearing of a safety helmet should be included.
- 16 If there is a risk of inhaling hazardous gases, fumes or dust, the respiratory organs must be protected and depending on the nature of the hazard, so must the eyes and skin.
- 17 Remember that where there is visible dust, the finer, invisible particles will almost certainly be present too; but the fact that no dust can be seen is not a reliable indication that dangerous, invisible dust is not present in the air.
- 18 Never operate the generator in excess of its limits as indicated in the technical specifications and avoid long no-load sequences.
- 19 Never operate the generator in a humid atmosphere. Excessive moisture causes worsening of the generator insulation.
- 20 Do not open electrical cabinets, cubicles or other equipment while voltage is supplied. If such cannot be avoided, e.g. for measurements, tests or adjustments, have the action carried out by a qualified electrician only, with appropriate tools, and ascertain that the required bodily protection against electrical hazards is applied.
- 21 Never touch the power terminals during operation of the machine.
- 22 Whenever an abnormal condition arises, e.g. excessive vibration, noise, odour, etc., switch the circuit breakers to OFF and stop the engine. Correct the faulty condition before restarting.
- 23 Check the electric cables regularly. Damaged cables and insufficient lightening of connections may cause electric shocks. Whenever damaged wires or dangerous conditions are observed, switch the circuit breakers to OFF and stop the engine. Replace the damaged wires or correct the dangerous condition before restarting. Make sure that all electric connections are securely tightened.
- 24 Avoid overloading the generator. The generator is provided with circuit breakers for overload protection. When a breaker has tripped, reduce the concerned load before restarting.
- 25 If the generator is used as stand-by for the mains supply, it must not be operated without control system which automatically disconnects the generator from the mains when the mains supply is restored.
- 26 Never remove the cover of the output terminals during operation. Before connecting or disconnecting wires, switch off the load and the circuit breakers, stop the machine and make sure that the machine cannot be started inadvertently or there is any residual voltage on the power circuit.
- 27 Running the generator at low load for long periods will reduce the lifetime of the engine.

1.5 SAFETY DURING MAINTENANCE AND REPAIR

Maintenance, overhaul and repair work shall only be carried out by adequately trained personnel; if required, under supervision of someone qualified for the job.

- 1 Use only the correct tools for maintenance and repair work, and only tools which are in good condition.
- 2 Parts shall only be replaced by genuine Atlas Copco replacement parts.
- 3 All maintenance work, other than routine attention, shall only be undertaken when the unit is stopped. Steps shall be taken to prevent inadvertent starting. In addition, a warning sign bearing a legend such as "work in progress; do not start" shall be attached to the starting equipment.
On engine-driven units the battery shall be disconnected and removed or the terminals covered by insulating caps.
On electrically driven units the main switch shall be locked in open position and the fuses shall be taken out. A warning sign bearing a legend such as "work in progress; do not supply voltage" shall be attached to the fuse box or main switch.
- 4 Prior to stripping an engine or other machine or undertaking major overhaul on it, prevent all movable parts from rolling over or moving.
- 5 Make sure that no tools, loose parts or rags are left in or on the machine. Never leave rags or loose clothing near the engine air intake.
- 6 Never use flammable solvents for cleaning (fire-risk).
- 7 Take safety precautions against toxic vapours of cleaning liquids.
- 8 Never use machine parts as a climbing aid.
- 9 Observe scrupulous cleanliness during maintenance and repair. Keep away dirt, cover the parts and exposed openings with a clean cloth, paper or tape.
- 10 Never weld on or perform any operation involving heat near the fuel or oil systems. Fuel and oil tanks must be completely purged, e.g. by steam-cleaning, before carrying out such operations. Never weld on, or in any way modify, pressure vessels. Disconnect the alternator cables during arc welding on the unit.
- 11 Support the towbar and the axle(s) securely if working underneath the unit or when removing a wheel. Do not rely on jacks.
- 12 Do not remove any of, or tamper with, the sound-damping material. Keep the material free of dirt and liquids such as fuel, oil and cleansing agents. If any sound-damping material is damaged, replace it to prevent the sound pressure level from increasing.
- 13 Use only lubricating oils and greases recommended or approved by Atlas Copco or the machine manufacturer. Ascertain that the selected lubricants comply with all applicable safety regulations, especially with regard to explosion or fire-risk and the possibility of decomposition or generation of hazardous gases. Never mix synthetic with mineral oil.
- 14 Protect the engine, alternator, air intake filter, electrical and regulating components, etc., to prevent moisture ingress, e.g. when steam-cleaning.
- 15 When performing any operation involving heat, flames or sparks on a machine, the surrounding components shall first be screened with non-flammable material.
- 16 Never use a light source with open flame for inspecting the interior of a machine.
- 17 When repair has been completed, the machine shall be barred over at least one revolution for reciprocating machines, several revolutions for rotary ones to ensure that there is no mechanical interference within the machine or driver. Check the direction of rotation of electric motors when starting up the machine initially and after any alteration to the electrical connection(s) or switch gear, to check that the oil pump and the fan function properly.

-
- 18 Maintenance and repair work should be recorded in an operator's logbook for all machinery. Frequency and nature of repairs can reveal unsafe conditions.
 - 19 When hot parts have to be handled, e.g. shrink fitting, special heat-resistant gloves shall be used and, if required, other body protection shall be applied.
 - 20 When using cartridge type breathing filter equipment, ascertain that the correct type of cartridge is used and that its useful service life is not surpassed.
 - 21 Make sure that oil, solvents and other substances likely to pollute the environment are properly disposed of.
 - 22 Before clearing the generator for use after maintenance or overhaul, submit it to a testrun, check that the AC power performance is correct and that the control and shutdown devices function correctly.

1.6 TOOL APPLICATIONS SAFETY

Apply the proper tool for each job. With the knowledge of correct tool use and knowing the limitations of tools, along with some common sense, many accidents can be prevented.

Special service tools are available for specific jobs and should be used when recommended. The use of these tools will save time and prevent damage to parts.

1.7 SPECIFIC SAFETY PRECAUTIONS

Batteries

When servicing batteries, always wear protecting clothing and glasses.

- 1 The electrolyte in batteries is a sulphuric acid solution which is fatal if it hits your eyes, and which can cause burns if it contacts your skin. Therefore, be careful when handling batteries, e.g. when checking the charge condition.
- 2 Install a sign prohibiting fire, open flame and smoking at the post where batteries are being charged.
- 3 When batteries are being charged, an explosive gas mixture forms in the cells and might escape through the vent holes in the plugs.
Thus an explosive atmosphere may form around the battery if ventilation is poor, and can remain in and around the battery for several hours after it has been charged. Therefore:
 - never smoke near batteries being, or having recently been, charged,
 - never break live circuits at battery terminals, because a spark usually occurs.
- 4 When connecting an auxiliary battery (AB) in parallel to the unit battery (CB) with booster cables: connect the + pole of AB to the + pole of CB, then connect the - pole of CB to the mass of the unit. Disconnect in the reverse order.

ORDERING SPARE PARTS

ORDERING SPARE PARTS

Always quote the part number, the designation and the quantity of the parts required, as well as the type and the serial number of the machine.

EXPLANATION OF THE COLUMNS

REF : REFERENCE CODE

Establishes the connection between a part in the list and a part in the illustration.

"—" means that the part is not shown in the illustration.

PART NUMBER

If no part number is given, the part cannot be obtained as a spare part. Parts marked with a dot are part of the assembly listed right above them.

DESIGNATION

Usually this is the name of the part. For standard parts, in addition to the name, a number of characteristics are given.

QTY : QUANTITY

Indicates the quantity of the part concerned. "AR" stands for "As Required".

COMMANDE DE PIÈCES DETACHEES

Toujours indiquer le numéro de pièce, la désignation, la quantité désirée ainsi que le type et le numéro de série du groupe.

EXPLICATION DES INTITULES DES COLONNES

REF : CODE DE REFERENCE

Réfère à la pièce détachée spécifiée dans la liste et sur l'illustration. "—" implique que la pièce n'est pas indiquée sur l'illustration.

PART NUMBER : NUMERO DE PIECE DETACHEE

Si le numéro n'est pas indiqué, la pièce n'est pas disponible en tant que pièce de rechange.

Les pièces indiquées par un point gras font partie de l'ensemble se trouvant au-dessus des pièces détachées correspondantes.

DESIGNATION

En général, le nom de la pièce. S'il s'agit de pièces standard, outre la désignation, un certain nombre de caractéristiques sont indiquées.

QTY : QUANTITE

Indique la quantité de la pièce détachée. "AR" indique "As required", c'est-à-dire la quantité à déterminer selon le cas.

PEDIDO DE PARTES

Siempre comunicar el número de parte, la designación y la cantidad deseada así como el tipo y el número de serie de la máquina.

INFORMACIONES SOBRE LAS COLUMNAS

REF : CODIGO DE REFERENCIA

Establece la conexión entre una parte en la lista y una parte en la ilustración.

"—" quiere decir que la parte no está ilustrada.

PART NUMBER : NUMERO DE PARTE

Si no se da ningún número, quiere decir que la parte no está disponible como parte de recambio.

Partes marcadas con un punto son partes del conjunto indicado más arriba.

DESIGNATION : DESIGNACION

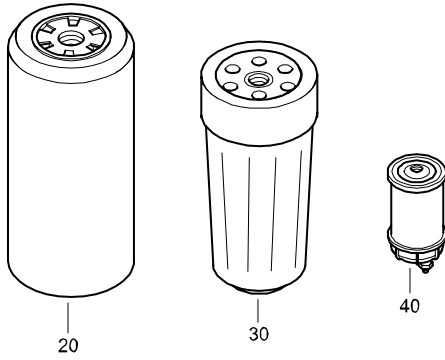
Principalmente el nombre de la parte. En caso de partes estándares, el nombre es seguido por especificaciones.

QTY : CANTIDAD

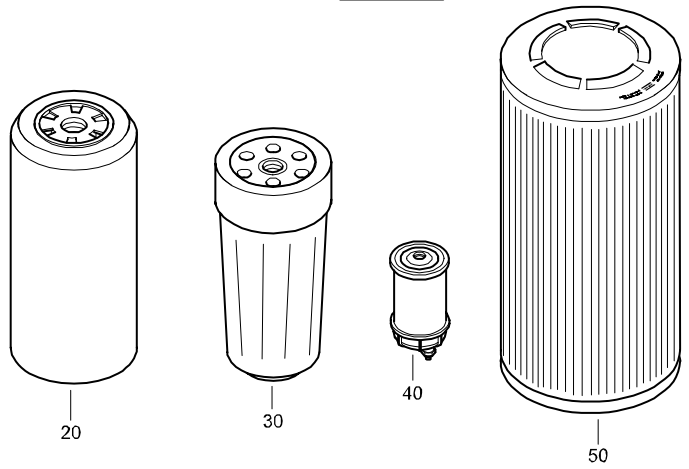
Indica la cantidad de la parte correspondiente. La indicación "AR" significa "As Required" (como sea requerido).

SERVICE PAK

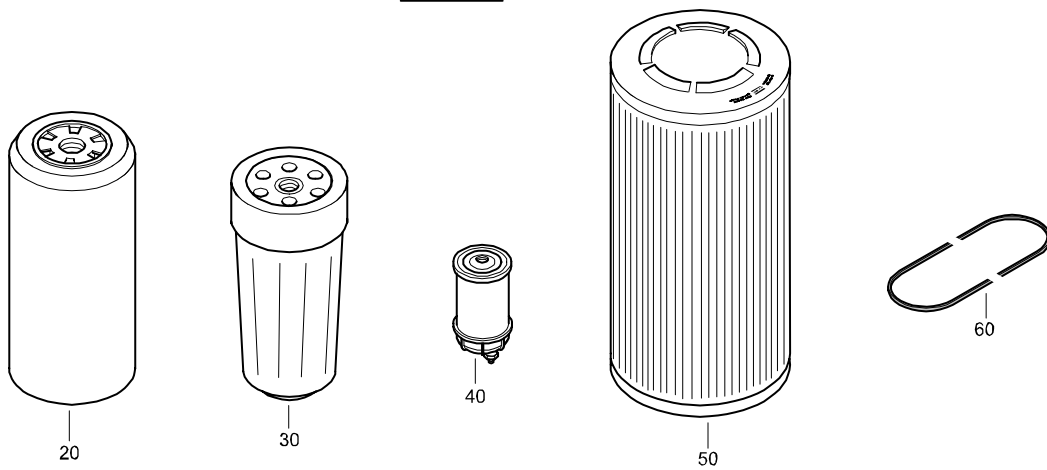
250 H



1000 H



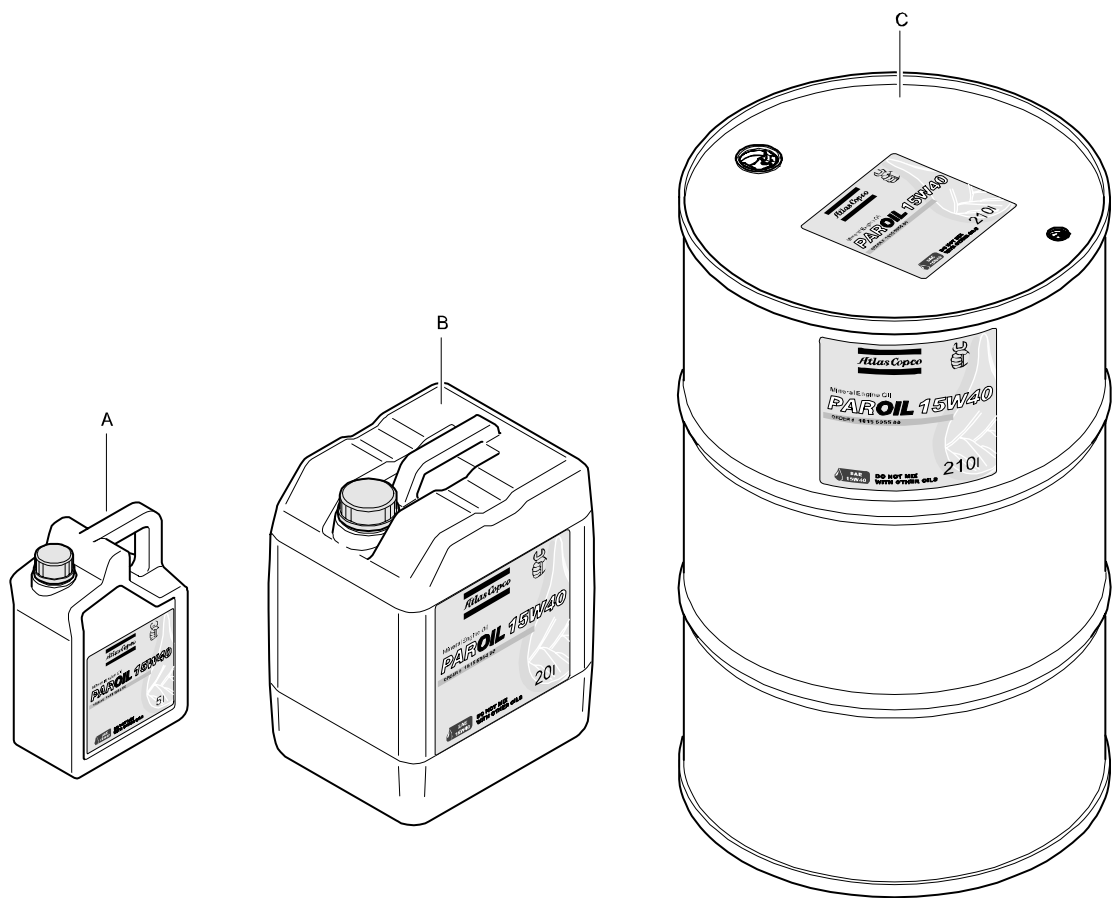
2000 H



REF	PART NUMBER	DESIGNATION	QTY	REF	PART NUMBER	DESIGNATION	QTY
-	1310 3004 19	SERVICE PAK 250 H		-	1310 3004 21	SERVICE PAK 2000 H	
•20	-	OIL FILTER	1	•20	-	OIL FILTER	1
•30	-	FINAL FUEL FILTER	1	•30	-	FINAL FUEL FILTER	1
•40	-	FUEL PRE-FILTER	1	•40	-	FUEL PRE-FILTER	1
				•50	-	AIR FILTER ELEMENT	1
				•60	-	FAN BELT	1
-	1310 3004 20	SERVICE PAK 1000 H					
•20	-	OIL FILTER	1				
•30	-	FINAL FUEL FILTER	1				
•40	-	FUEL PRE-FILTER	1				
•50	-	AIR FILTER ELEMENT	1				

ENGINE OIL

PAROIL 15W40

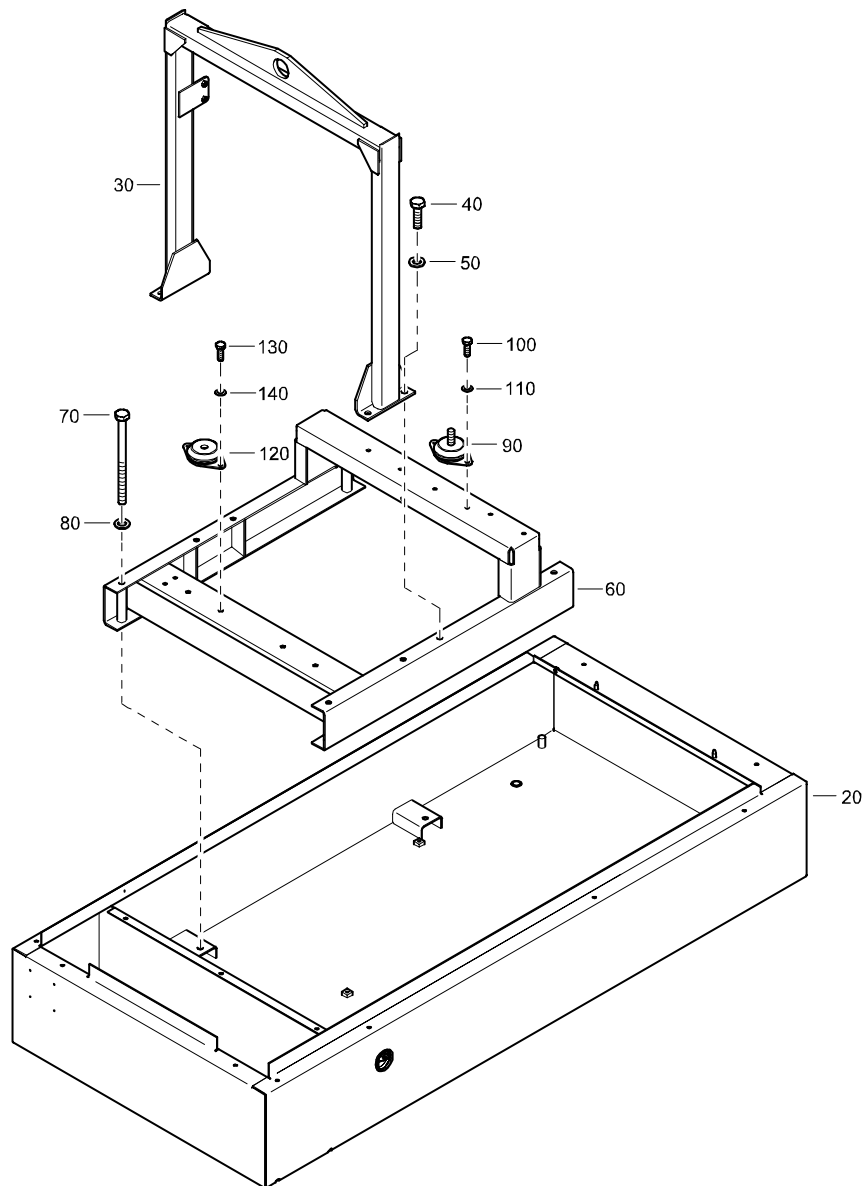


REF	PART NUMBER	DESIGNATION	QTY
A	1615 5953 00	PAROIL 15W40 5 LITER CAN	1
B	1615 5954 00	PAROIL 15W40 20 LITER CAN	1
C	1615 5955 00	PAROIL 15W40 210 LITER BARREL	1

REF	PART NUMBER	DESIGNATION	QTY
-----	-------------	-------------	-----

STANDARD

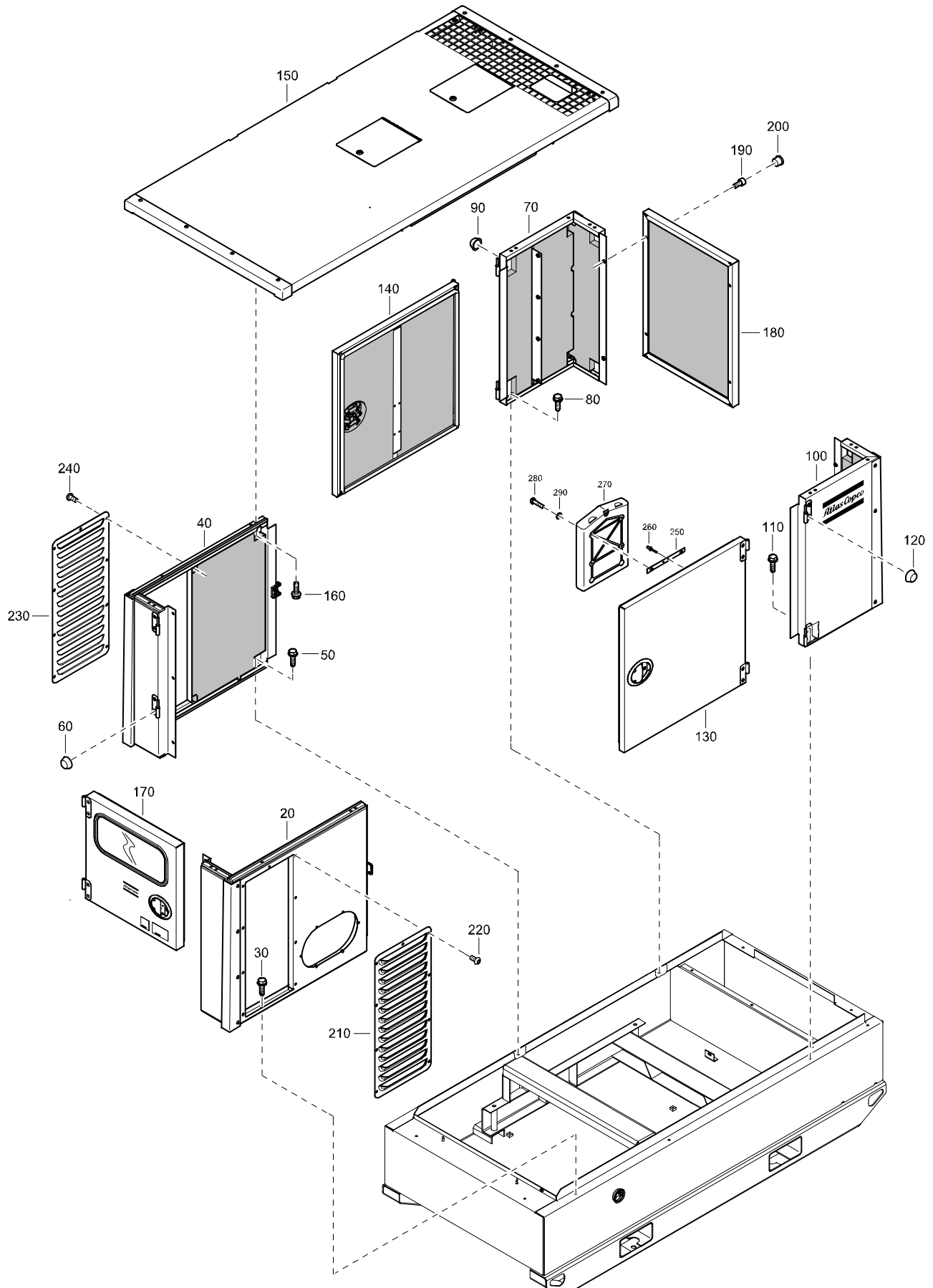
FRAME AND MOUNTS



REF	PART NUMBER	DESIGNATION	QTY	REF	PART NUMBER	DESIGNATION	QTY
20	1310 4014 81	FRAME (For details see page 29)	1				
30	1310 4063 01	LIFTING BALE	1				
40	0147 1402 03	HEX. HEAD SCREW	4				
50	0301 2358 00	PLAIN WASHER	4				
60	1310 4015 01	SUBFRAME	1				
70	0147 1422 03	HEX. HEAD SCREW	4				
80	0301 2358 00	PLAIN WASHER	4				
90	1619 5506 81	BUFFER	2				
100	0147 1323 15	HEX. HEAD SCREW	4				
110	0301 2335 00	PLAIN WASHER	4				
120	1619 5506 02	BUFFER	2				
130	0147 1323 15	HEX. HEAD SCREW	4				
140	0301 2335 00	PLAIN WASHER	4				

STANDARD

BODYWORK



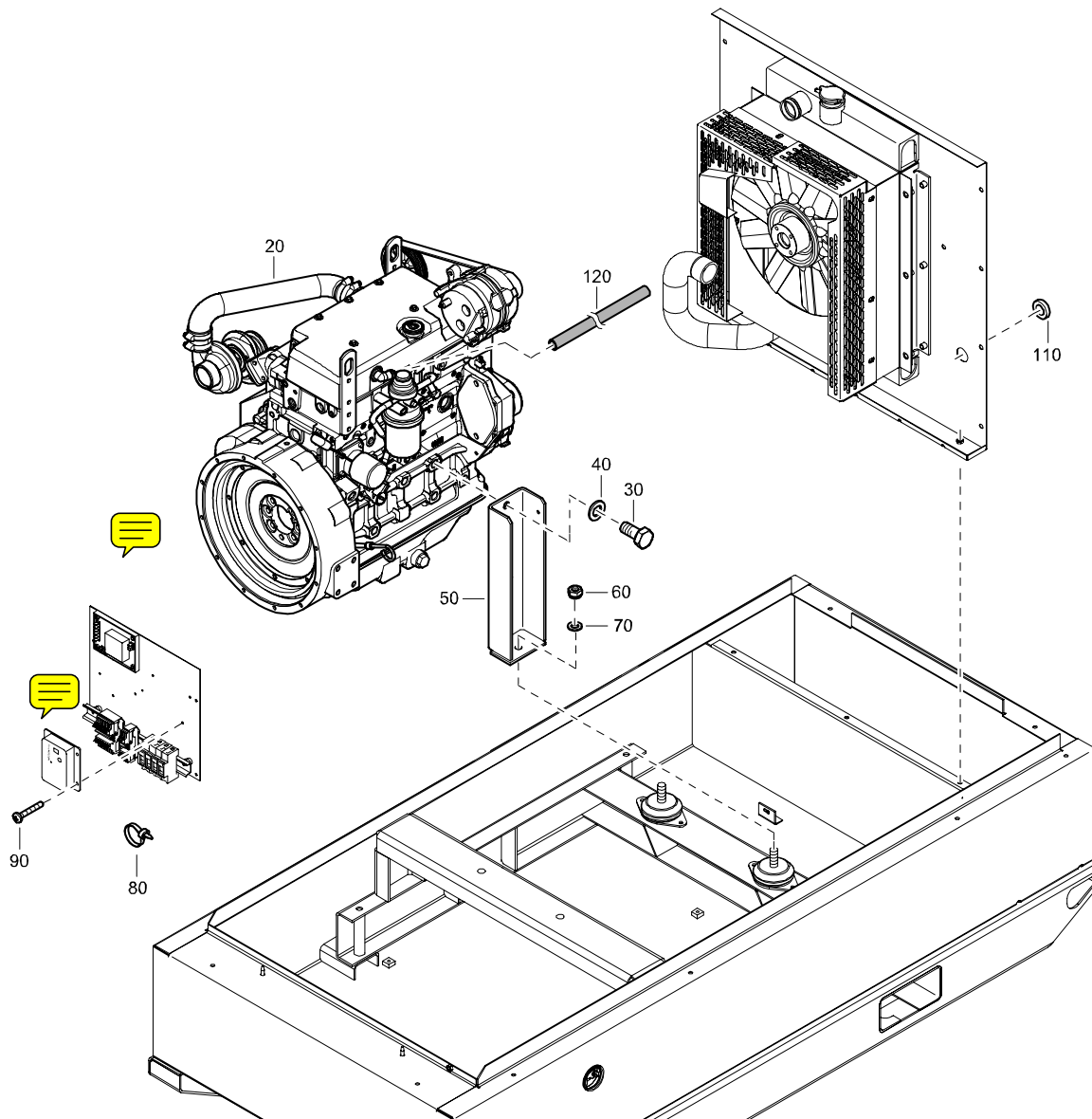
STANDARD

BODYWORK

REF	PART NUMBER	DESIGNATION	QTY	REF	PART NUMBER	DESIGNATION	QTY
20	1310 4016 80	CORNER (For details see page 30)	1				
30	1619 2766 00	HEX.HEAD SCREW	3				
40	1310 4025 80	CORNER (For details see page 31)	1				
50	1619 2766 00	HEX.HEAD SCREW	3				
60	1613 3672 00	CAP	2				
70	1310 4029 80	CORNER (For details see page 32)	1				
80	1619 2766 00	HEX.HEAD SCREW	3				
90	1613 3672 00	CAP	2				
100	1310 4029 90	CORNER (For details see page 33)	1				
110	1619 2766 00	HEX.HEAD SCREW	3				
120	1613 3672 00	CAP	2				
130	1310 4033 80	DOOR (For details see page 34)	1				
140	1310 4033 90	DOOR (For details see page 35)	1				
150	1310 4036 81	ROOF (For details see page 36)	1				
160	1619 2766 00	HEX.HEAD SCREW	12				
170	1310 4044 80	DOOR (For details see page 37)	1				
180	1310 4045 80	PANEL (For details see page 38)	1				
190	0211 1322 03	HEX.HEAD SCREW	4				
200	1310 4065 00	PLUG	4				
210	1310 4060 00	BAFFLE	1				
220	0215 0003 77	HEX SOCK. SCREW	9				
230	1310 4060 00	BAFFLE	1				
240	0215 0003 77	HEX SOCK. SCREW	9				
250	1310 4059 01	BRACKET	2				
260	0129 3172 01	RIVET	4				
270	1310 0356 39	DOCUMENT HOLDER	1				
280	0147 1249 03	HEX.HEAD SCREW	4				
290	0301 2321 00	FLAT WASHER	4				

STANDARD

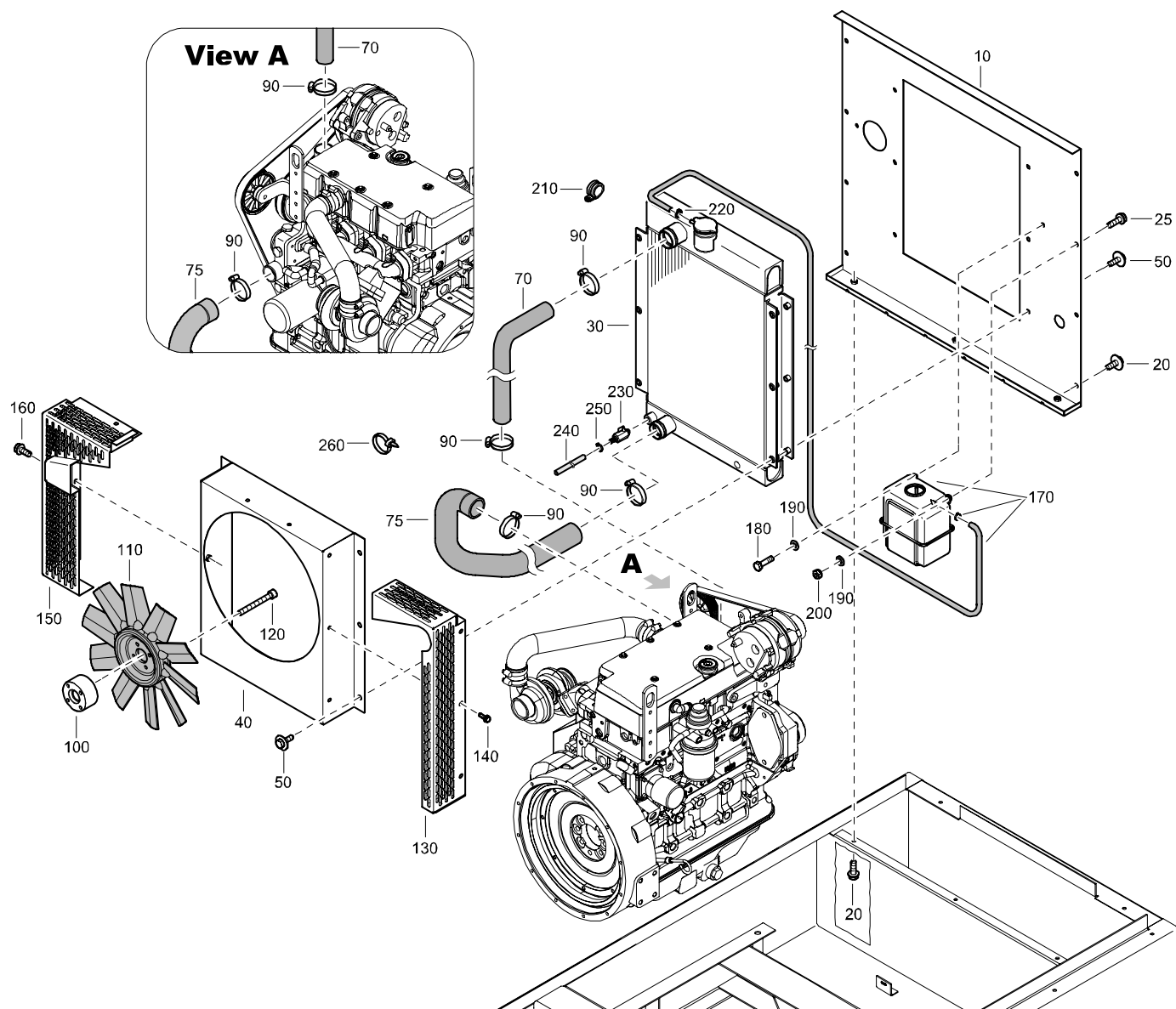
ENGINE AND ACCESSORIES



REF	PART NUMBER	DESIGNATION	QTY	REF	PART NUMBER	DESIGNATION	QTY
20	1310 4011 00	ENGINE	1				
30	0147 1476 03	HEX. HEAD SCREW	4				
40	0301 2378 00	PLAIN WASHER	4				
50	1310 4051 00	SUPPORT	2				
60	0147 1128 39	LOCKNUT	2				
70	0301 2344 00	PLAIN WASHER	2				
80	1088 1301 03	CABLE TY	1				
90	1310 0331 70	HEX. HEAD SCREW	2				
100	1310 0355 74	GROMMET	1				
110	1310 0367 92	HOSE	AR				

STANDARD

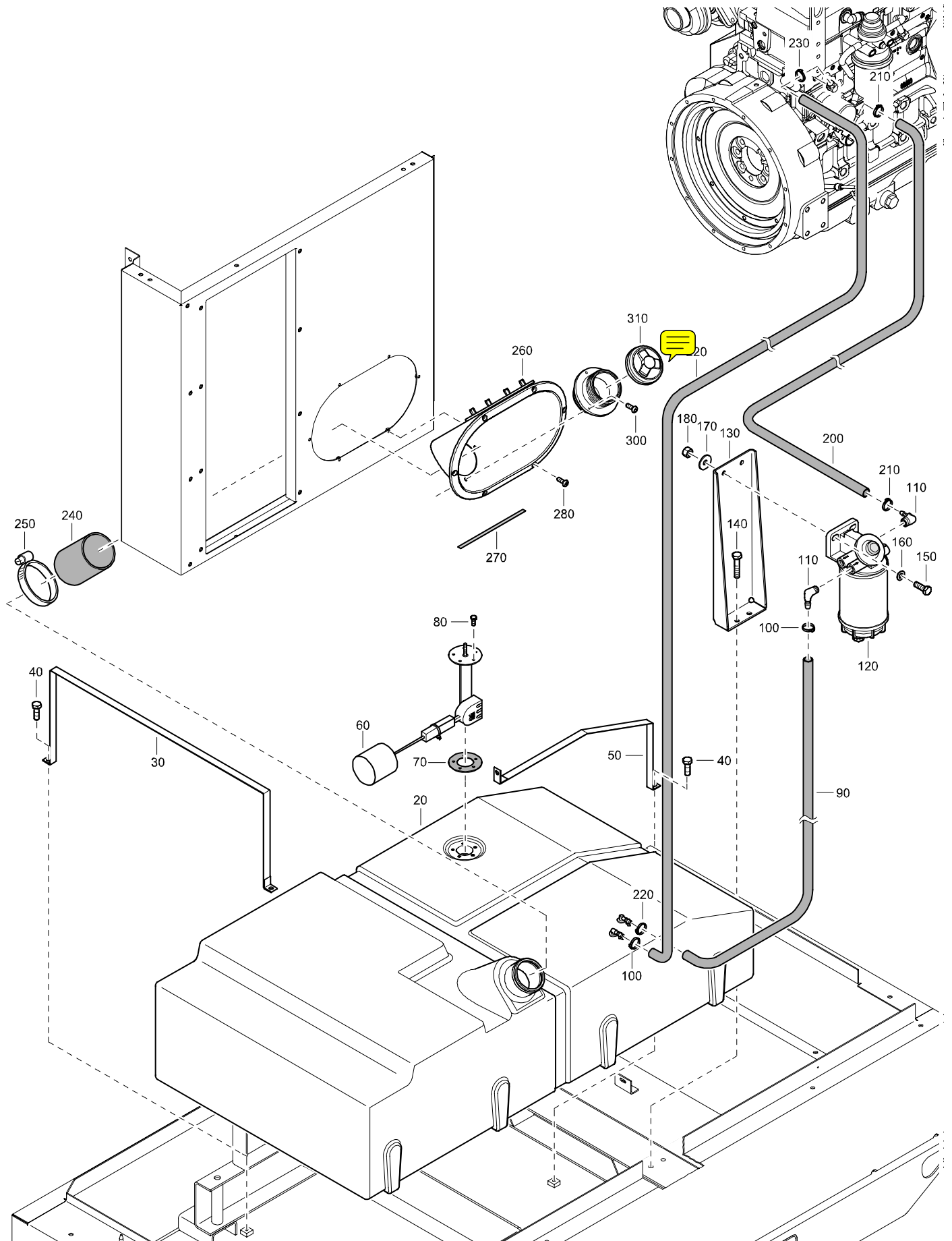
COOLING SYSTEM



REF	PART NUMBER	DESIGNATION	QTY	REF	PART NUMBER	DESIGNATION	QTY
10	1310 4056 01	PLATE RADIATOR	1	210	1310 0365 57	WIRE & TUBE CLAMP	1
20	1615 5664 00	HEX.HEAD SCREW	10	220	1310 0323 84	HOSE CLAMP	1
25	1619 5337 01	SCRAPER BOLT	1	230	1615 7072 00	VALVE	1
30	1310 4012 01	RADIATOR	1	240	1310 0355 56	TUBE	AR
40	1310 4057 01	FANBOX	1	250	1310 0323 84	HOSE CLAMP	1
50	1615 5664 00	HEX.HEAD SCREW	12	260	1088 1301 03	CABLE TY	3
70	1310 4070 00	HOSE	1				
75	1310 4096 00	HOSE	1				
90	0347 6113 00	HOSE CLAMP	4				
100	1310 4058 00	ADAPTER-FAN	1				
110	1310 4010 00	FAN	1				
120	0211 1334 03	HEX SOCK. SCREW	4				
130	1310 4071 01	FAN GUARD	1				
140	1619 2766 00	HEX.HEAD SCREW	4				
150	1310 4072 01	FAN GUARD	1				
160	1619 2766 00	HEX.HEAD SCREW	4				
170	1310 0343 72	KIT-COOLANT RECOVERY SYSTEM	1				
180	0144 3248 03	HEX.HEAD SCREW	1				
190	0301 2335 00	FLAT WASHER	2				
200	0292 1305 00	LOCKNUT	1				

STANDARD

FUEL SYSTEM



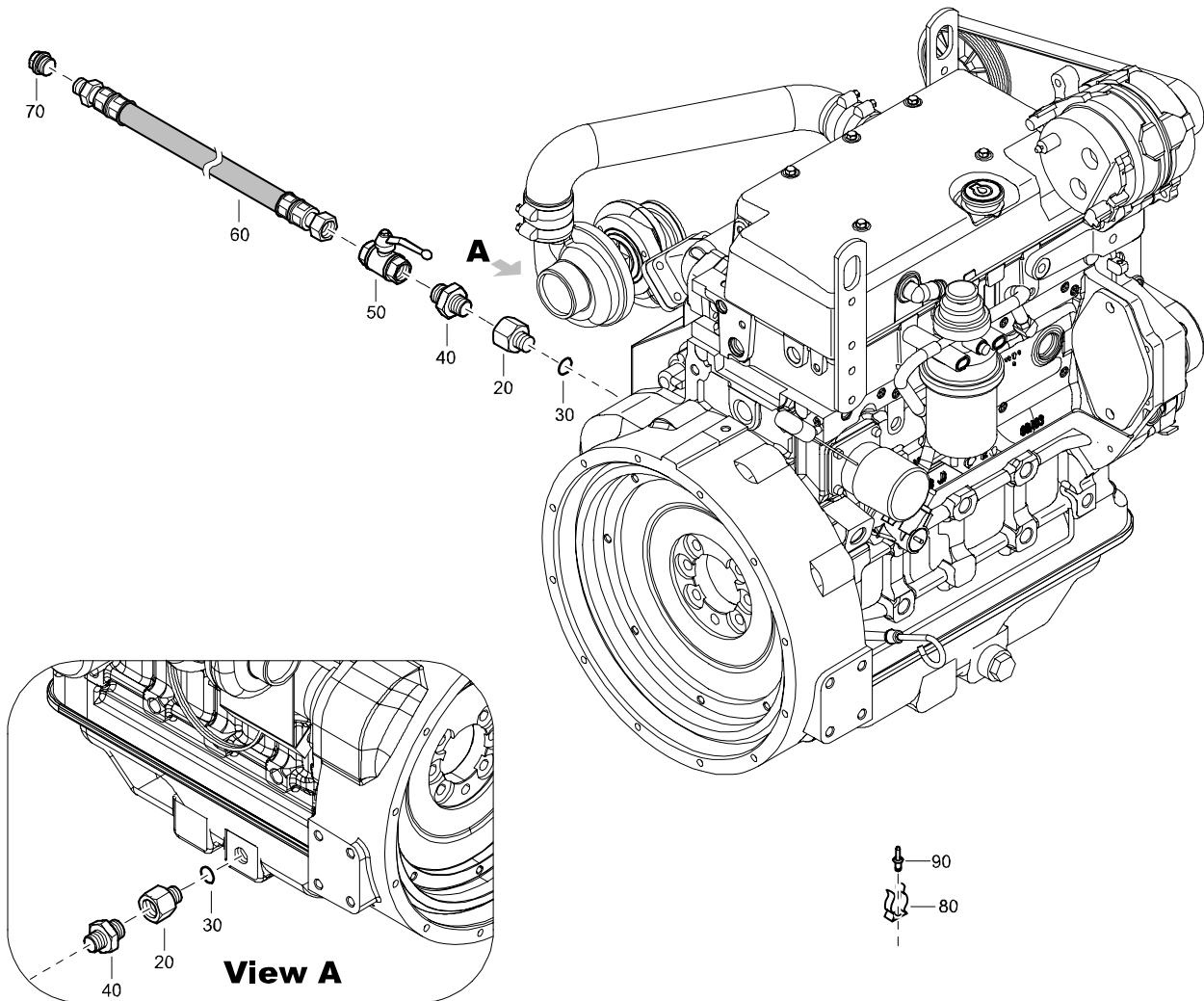
STANDARD

FUEL SYSTEM

REF	PART NUMBER	DESIGNATION	QTY	REF	PART NUMBER	DESIGNATION	QTY
20	1310 4061 80	FUEL TANK (For details see page 39)	1				
30	1310 4066 00	STRAP	1				
40	1619 2766 00	HEX. HEAD SCREW	4				
50	1310 4067 00	STRAP	1				
60	1310 4073 00	FUEL GAUGE	1				
70	1310 0327 02	GASKET	1				
80	1310 0343 88	HEX SOCK. SCREW	5				
90	1310 0311 98	HOSE	AR				
100	1310 0323 84	HOSE CLAMP	2				
110	1615 8933 00	NIPPLE	2				
120	1615 7397 00	FILTER	1				
130	1310 4074 00	SUPPORT FUEL FILTER	1				
140	1619 2766 00	HEX. HEAD SCREW	2				
150	0147 1327 03	HEX. HEAD SCREW	2				
160	0300 8019 00	PLAIN WASHER	2				
170	0301 2335 00	PLAIN WASHER	2				
180	0266 2110 00	HEX NUT	2				
190	1310 0323 84	HOSE CLAMP	4				
200	1310 0311 98	HOSE	AR				
210	1310 0323 84	HOSE CLAMP	2				
220	1310 0311 98	HOSE	AR				
230	1310 0323 84	HOSE CLAMP	2				
240	1604 5016 00	HOSE	1				
250	0347 6131 00	HOSE CLAMP	2				
260	1604 5037 80	FUNNEL (For details see page 41)	1				
270	1310 0320 16	TAPE	AR				
280	3222 3112 92	BOLT	6				
290	1604 5075 00	FLANGE	1				
300	3222 3112 92	BOLT	3				
310	1615 6947 00	COVER	1				

STANDARD

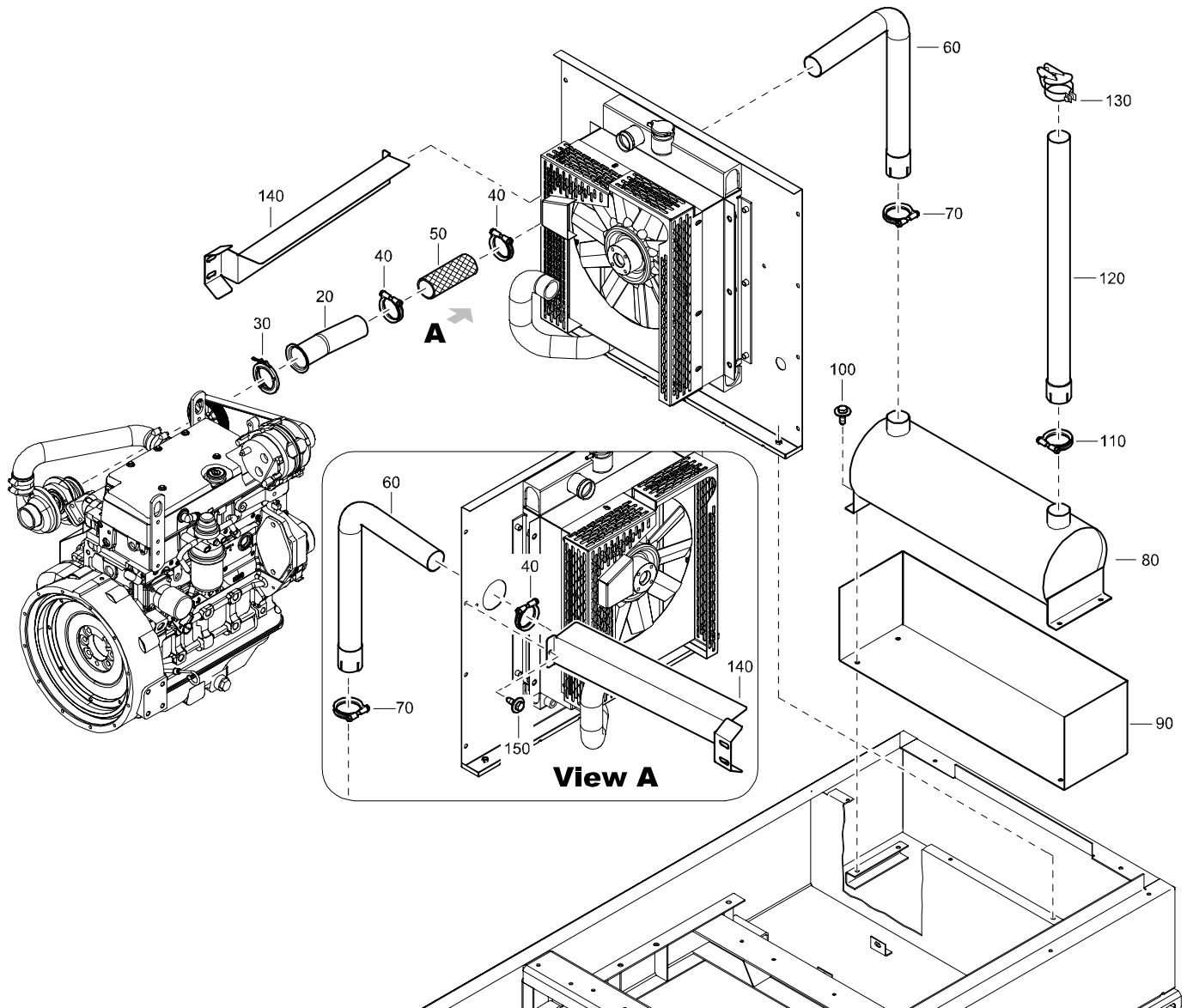
OIL SYSTEM



REF	PART NUMBER	DESIGNATION	QTY	REF	PART NUMBER	DESIGNATION	QTY
20	1310 0365 52	ADAPTER	1				
30	0663 2101 80	O-RING	1				
40	0603 0118 14	NIPPLE	1				
50	1310 4092 00	BALL VALVE	1				
60	1310 0353 82	HOSE ASSY	1				
70	1310 0355 25	HEX. PLUG	1				
80	1079 3461 02	CLIP	1				
90	0129 3108 00	BLIND RIVET	1				

STANDARD

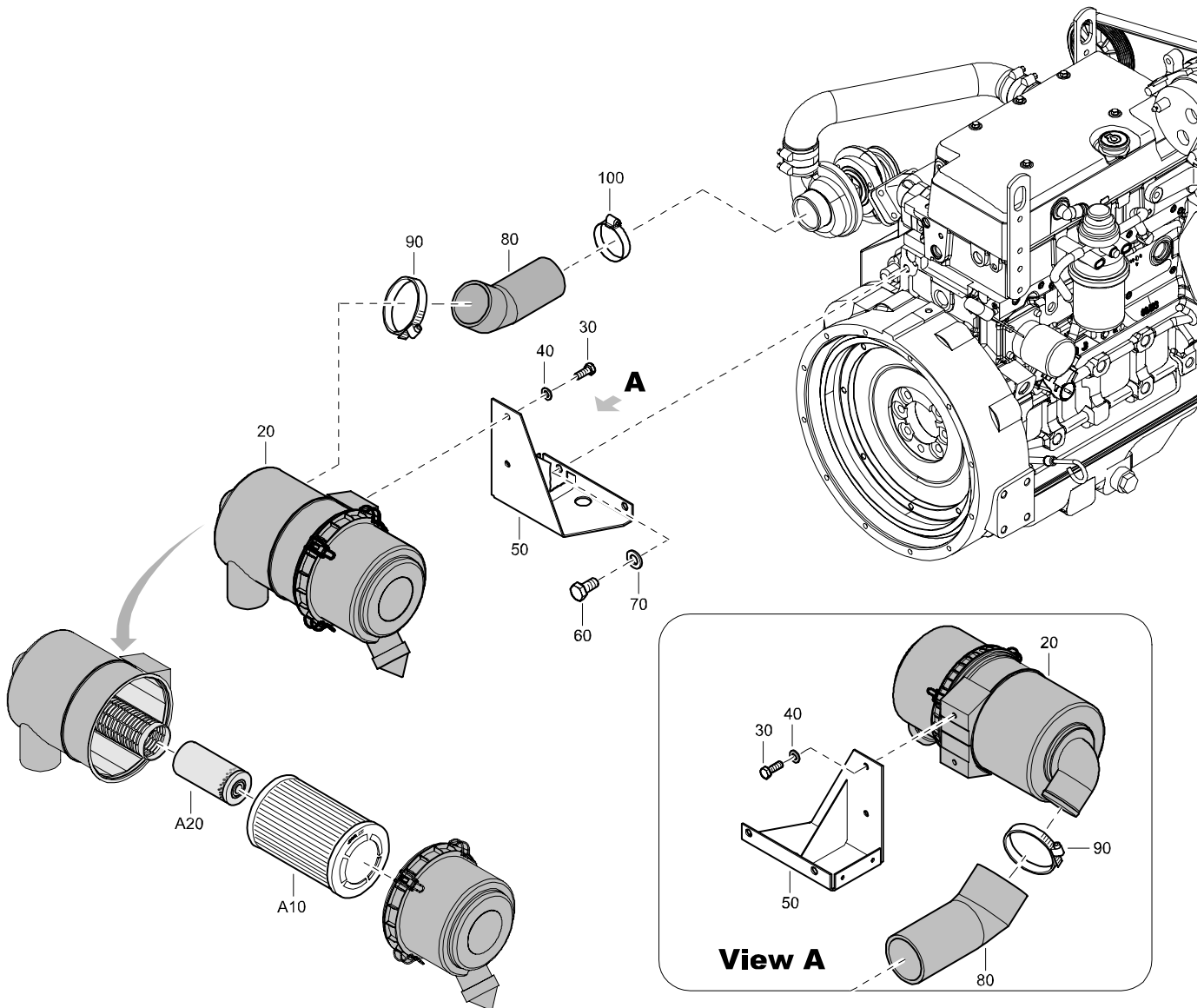
EXHAUST SYSTEM



REF	PART NUMBER	DESIGNATION	QTY	REF	PART NUMBER	DESIGNATION	QTY
20	1310 4052 00	EXHAUST PIPE	1				
30	1310 0301 62	EXHAUST CLAMP	1				
40	1310 0345 55	EXHAUST CLAMP	2				
50	1310 0339 54	METAL HOSE	1				
60	1310 4053 00	EXHAUST PIPE	1				
70	1310 1477 00	EXHAUST CLAMP	1				
80	1310 4013 00	MUFFLER	1				
90	1310 4075 01	EXHAUST SHIELD	1				
100	1615 5664 00	HEX. HEAD SCREW	4				
110	1310 1477 00	EXHAUST CLAMP	1				
120	1310 4054 00	EXHAUST PIPE	1				
130	1310 4076 00	RAIN CAP	1				
140	1310 4068 01	EXHAUST SHIELD	1				
150	1615 5664 00	HEX. HEAD SCREW	3				

STANDARD

AIR INLET

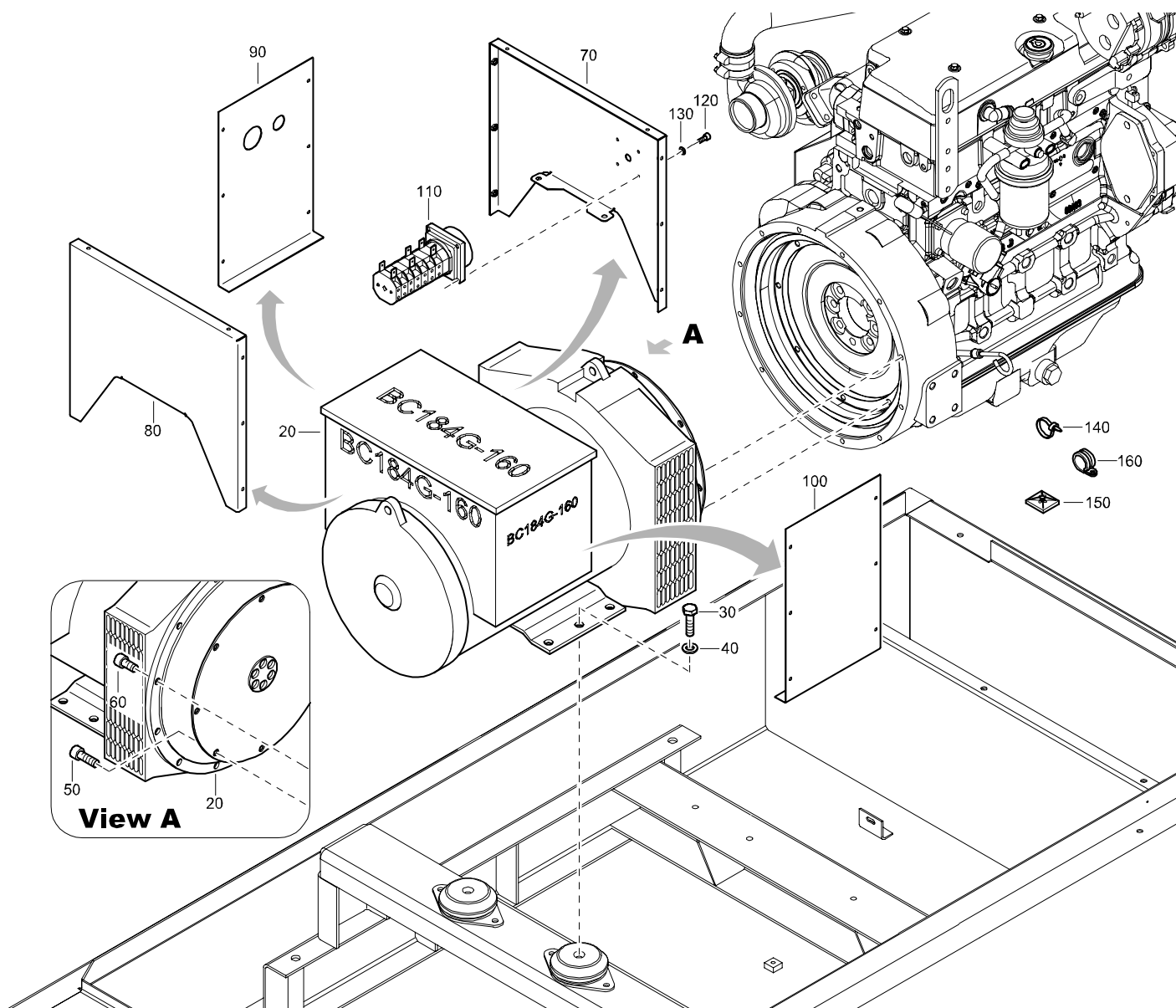


REF	PART NUMBER	DESIGNATION	QTY
20	1310 0301 58	AIR FILTER	1
•A10	1310 0301 60	AIR FILTER ELEMENT	1
•A20	1310 0303 10	AIR FILTER SAFETY CARTRIDGE	1
30	0147 1323 03	HEX. HEAD SCREW	2
40	0301 2335 00	PLAIN WASHER	2
50	1310 4077 01	SUPPORT	1
60	0147 1400 03	HEX. HEAD SCREW	2
70	0301 2358 00	PLAIN WASHER	2
80	1310 4062 00	HOSE	1
90	1310 0323 83	HOSE CLAMP	1
100	0347 6113 00	HOSE CLAMP	1

REF	PART NUMBER	DESIGNATION	QTY
-----	-------------	-------------	-----

STANDARD

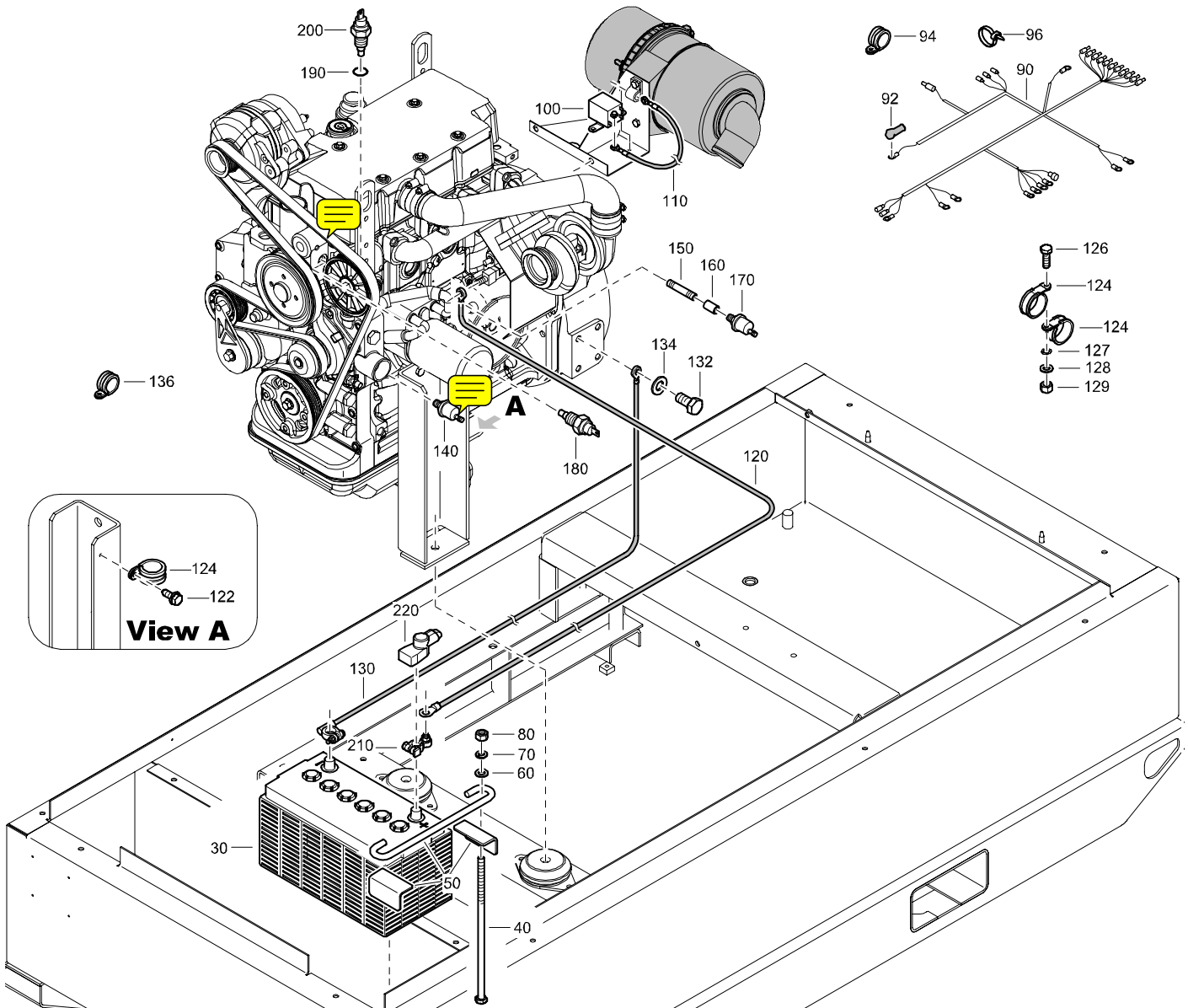
ALTERNATOR AND ACCESSORIES



REF	PART NUMBER	DESIGNATION	QTY	REF	PART NUMBER	DESIGNATION	QTY
20	1310 4064 00	ALTERNATOR	1				
30	0147 1363 03	HEX. HEAD SCREW	2				
40	0301 2344 00	PLAIN WASHER	2				
50	0211 1362 00	HEX SOCKET SCREW	8				
60	0211 5287 00	HEX SOCKET SCREW	8				
70	1310 4086 01	PLATE ALTERNATOR	1				
80	1310 4087 01	PLATE ALTERNATOR	1				
90	1310 4088 01	PLATE ALTERNATOR	1				
100	1310 4089 00	PLATE ALTERNATOR	1				
110	1089 9378 24	SELECTOR SWITCH	1				
120	0211 1957 42	SOC HD CAP SCREW	4				
130	0301 2318 00	FLAT WASHER	4				
140	1088 1301 03	CABLE TY	10				
150	1310 3015 00	BLOCK	10				
160	1310 0365 57	CLAMP	1				

STANDARD

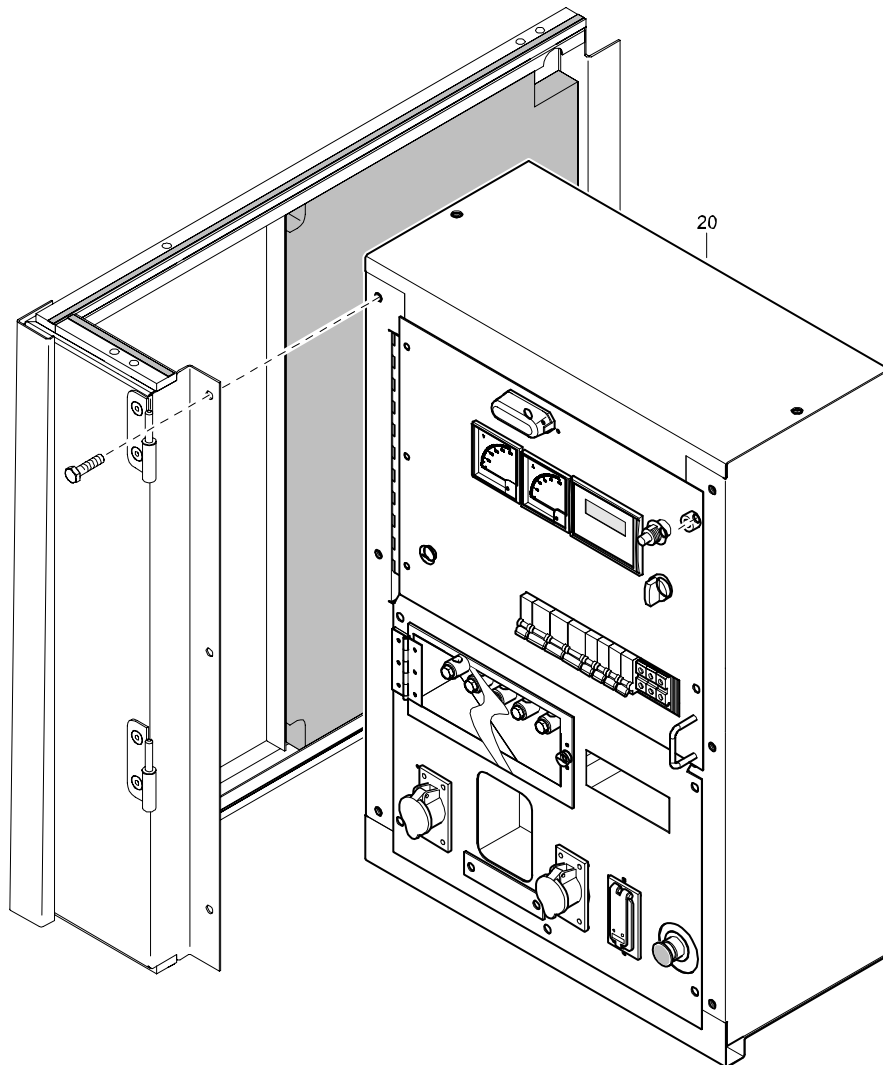
ELECTRICAL SYSTEM



REF	PART NUMBER	DESIGNATION	QTY	REF	PART NUMBER	DESIGNATION	QTY
30	1310 0310 89	BATTERY	1	132	0147 1400 03	HEX HEAD SCREW	2
40	1310 0311 67	BOLT	2	134	0301 2358 00	FLAT WASHER	2
50	1310 0311 66	BATTERY CLAMP	1	136	1310 0342 89	HOSE CLAMP	1
60	0301 2335 00	FLAT WASHER	2	140	1310 0330 41	PRESSURE SWITCH	1
70	0333 2225 00	SPRING WASHER	2	150	1310 0364 46	PIPE NIPPLE	1
80	0268 3205 00	HEX. NUT	2	160	1310 2523 56	PIPE COUPLING	1
90	1310 4080 01	WIRING HARNESS	1	170	1089 0565 13	PRESSURE SENSOR	1
92	1310 0363 91	TERMINAL INSULATOR	1	180	1310 0350 59	TEMPERATURE SWITCH	1
94	1310 0365 57	CLAMP	1	190	0663 3122 00	O-RING	1
96	1088 1301 03	CABLE TY	10	200	1089 0567 14	TEMP SENSOR	1
100	1089 0585 01	RELAY	1	210	1604 5043 00	CLAMP	1
110	1310 0303 04	CABLE	1	220	1604 7216 00	COVER	1
120	1310 4098 00	BATTERY CABLE	1				
122	1619 2766 00	HEX HEAD SCREW	1				
124	1310 0365 57	CLAMP	5				
126	0147 1323 03	HEX HEAD SCREW	2				
127	0333 3227 00	LOCK WASHER	2				
128	0301 2335 00	FLAT WASHER	4				
129	0266 2110 00	HEX NUT	2				
130	1310 0333 25	BATTERY CABLE	1				

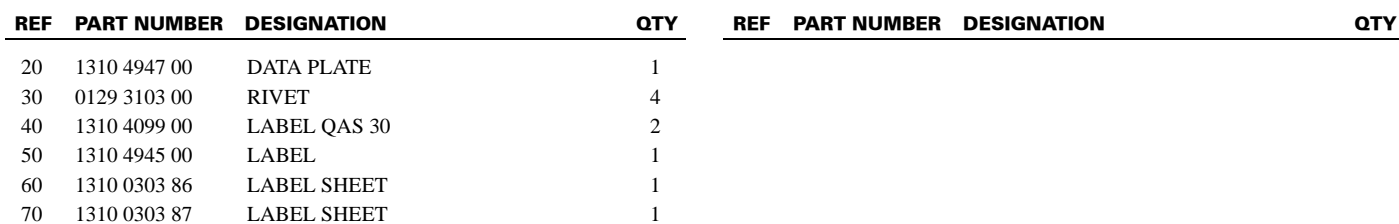
STANDARD

CUBICLE AND ACCESSORIES



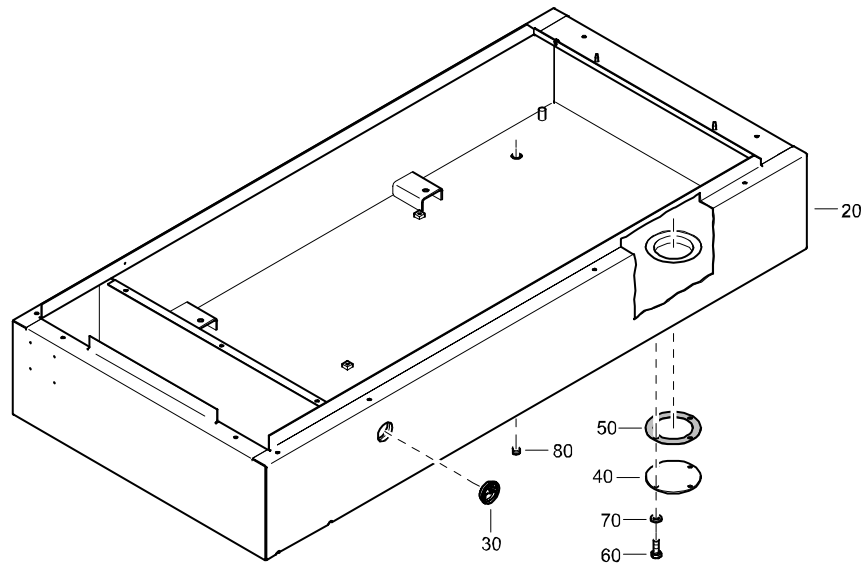
REF	PART NUMBER	DESIGNATION	QTY	REF	PART NUMBER	DESIGNATION	QTY
20	1310 4095 00	CUBICLE ASSEMBLY (For details see page 40)	1				

MARKINGS



STANDARD

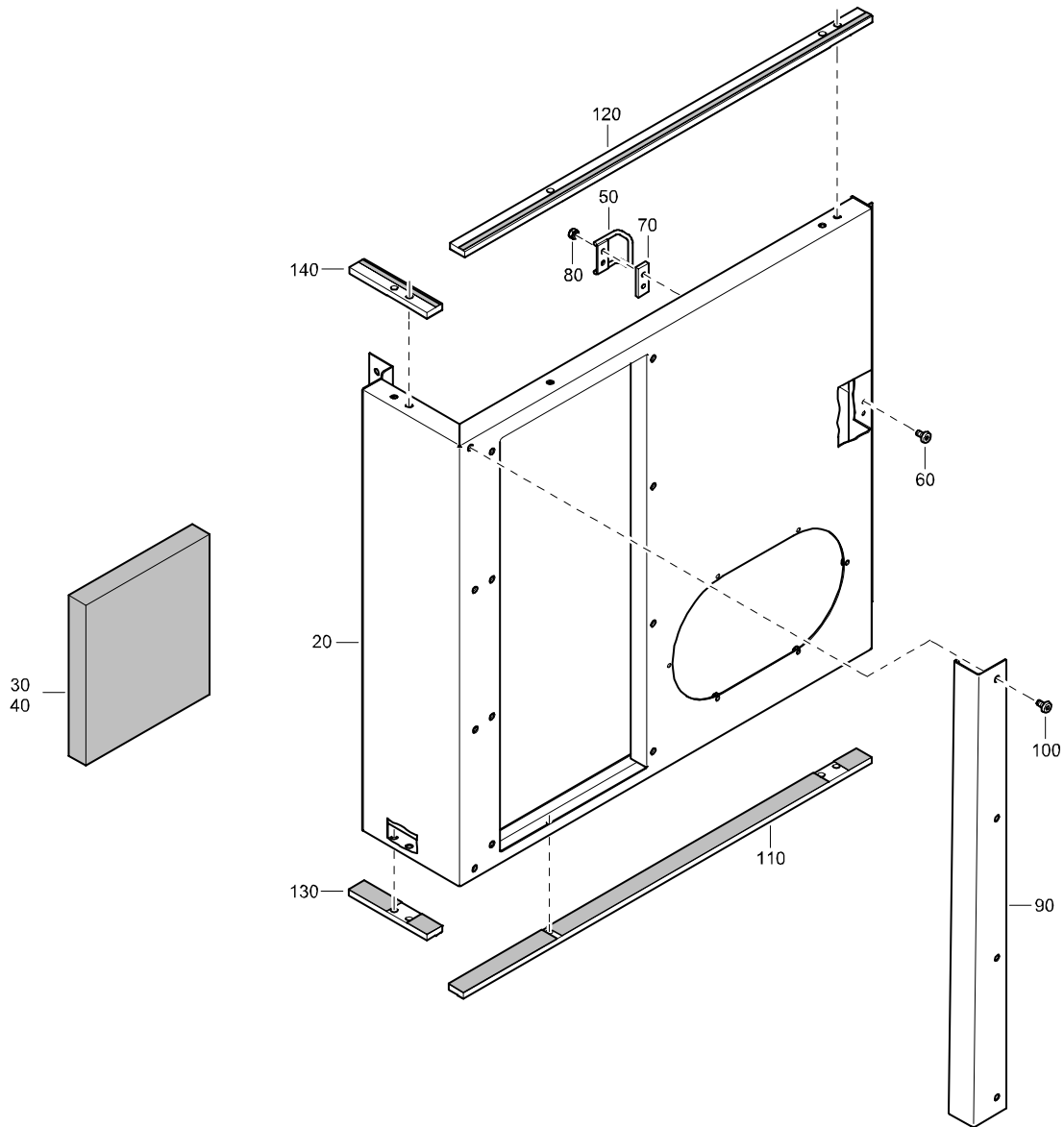
FRAME



REF	PART NUMBER	DESIGNATION	QTY	REF	PART NUMBER	DESIGNATION	QTY
-	1310 4014 81	FRAME	(From page 15)				
•20	1310 4014 01	FRAME	1				
•30	1613 2655 00	PLUG	1				
•40	1310 4069 00	FLANGE	1				
•50	1604 6550 00	GASKET	1				
•60	0147 1322 03	HEX. HEAD SCREW	4				
•70	0301 2335 00	PLAIN WASHER	4				
•80	0686 6104 01	PLUG	1				

STANDARD

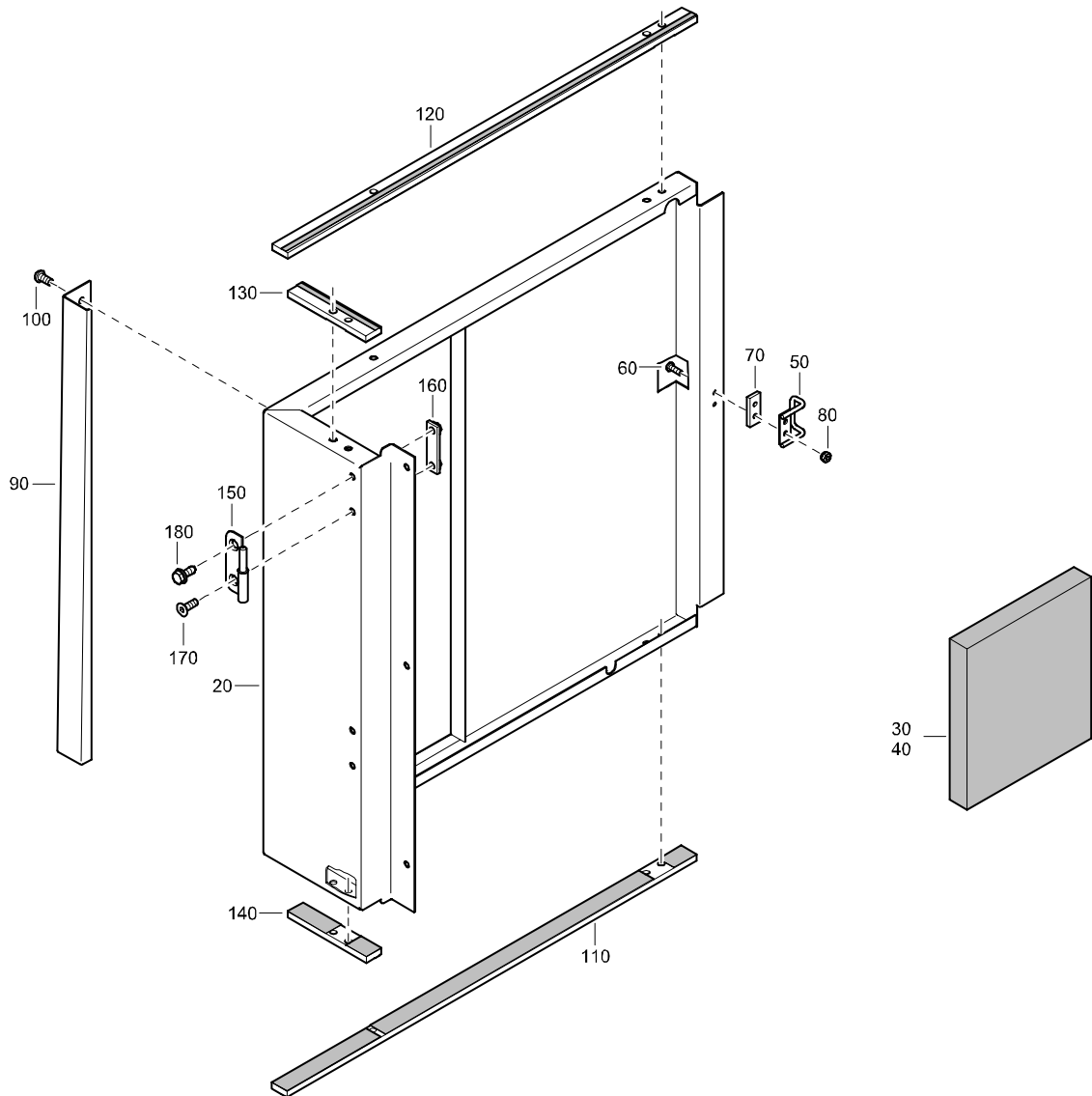
CORNER



REF	PART NUMBER	DESIGNATION	QTY	REF	PART NUMBER	DESIGNATION	QTY
-	1310 4016 80	CORNER	(From page 16)				
•20	1310 4016 00	CORNER	1				
•30	1310 4017 00	SILENCING FOAM	1				
•40	1310 4018 00	SILENCING FOAM	1				
•50	1604 5031 00	BRACKET	1				
•60	0215 0003 89	SCREW	2				
•70	1310 4019 00	SPACER	1				
•80	0291 1108 00	LOCKNUT	2				
•90	1310 4020 00	BEAM	1				
•100	0215 0003 77	HEX SOCK. SCREW	4				
•110	1310 4021 80	STRIP	1				
		(For details see page 42)					
•120	1310 4021 90	STRIP	1				
		(For details see page 42)					
•130	1310 4024 80	STRIP	1				
		(For details see page 43)					
•140	1310 4024 90	STRIP	1				
		(For details see page 43)					

STANDARD

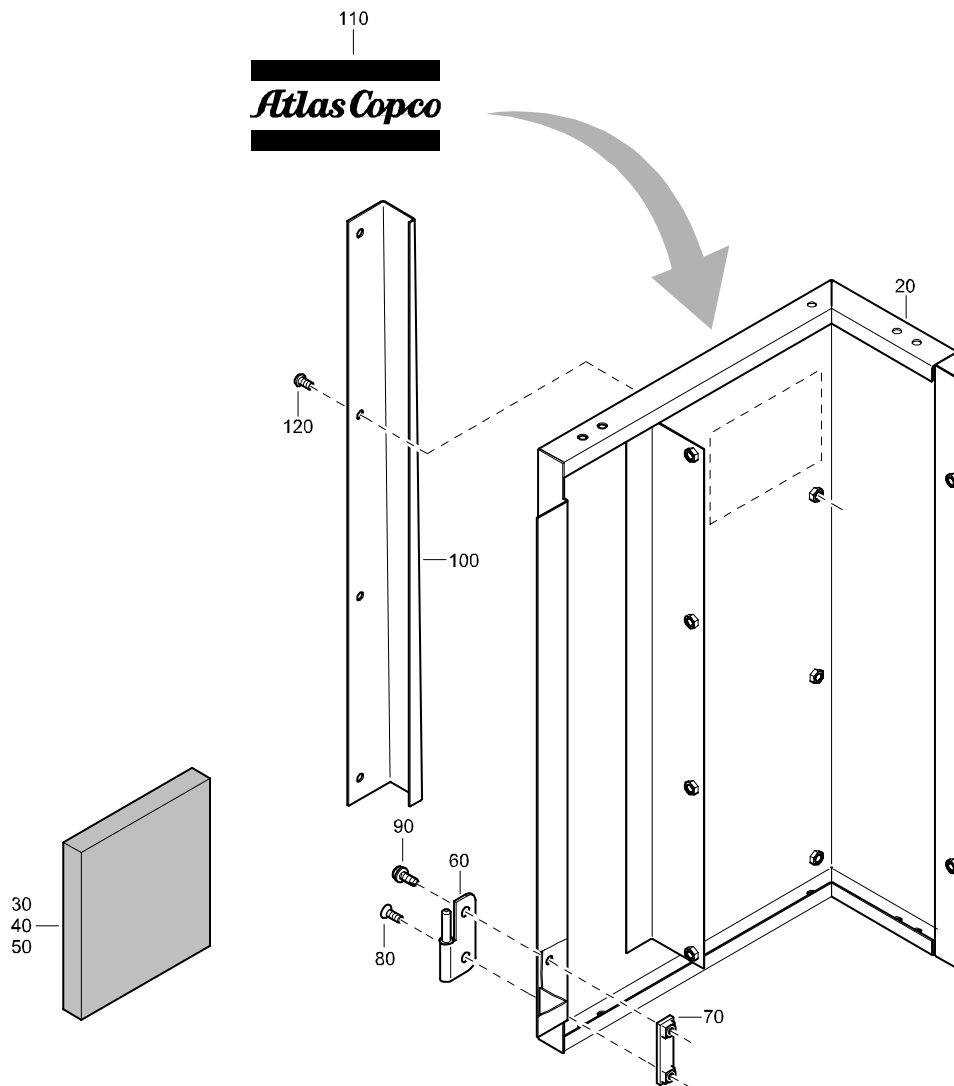
CORNER



REF	PART NUMBER	DESIGNATION	QTY	REF	PART NUMBER	DESIGNATION	QTY
-	1310 4025 80	CORNER	(From page 16)				
•20	1310 4025 00	CORNER	1				
•30	1310 4026 00	SILENCING FOAM	1				
•40	1310 4027 00	SILENCING FOAM	1				
•50	1604 5031 00	BRACKET	1				
•60	0215 0003 89	SCREW	2				
•70	1310 4019 00	SPACER	1				
•80	0291 1108 00	LOCKNUT	2				
•90	1310 4028 00	BEAM	1				
•100	0215 0003 77	HEX SOCK. SCREW	4				
•110	1310 4021 80	STRIP	1				
•120	1310 4021 90	STRIP	1				
•130	1310 4024 80	STRIP	1				
•140	1310 4024 90	STRIP	1				
•150	1604 3428 00	HINGE	2				
•160	1615 5684 00	BRACKET	2				
•170	0216 1324 03	HEX SOCK. SCREW	2				
•180	1619 2766 00	HEX.HEAD SCREW	2				

STANDARD

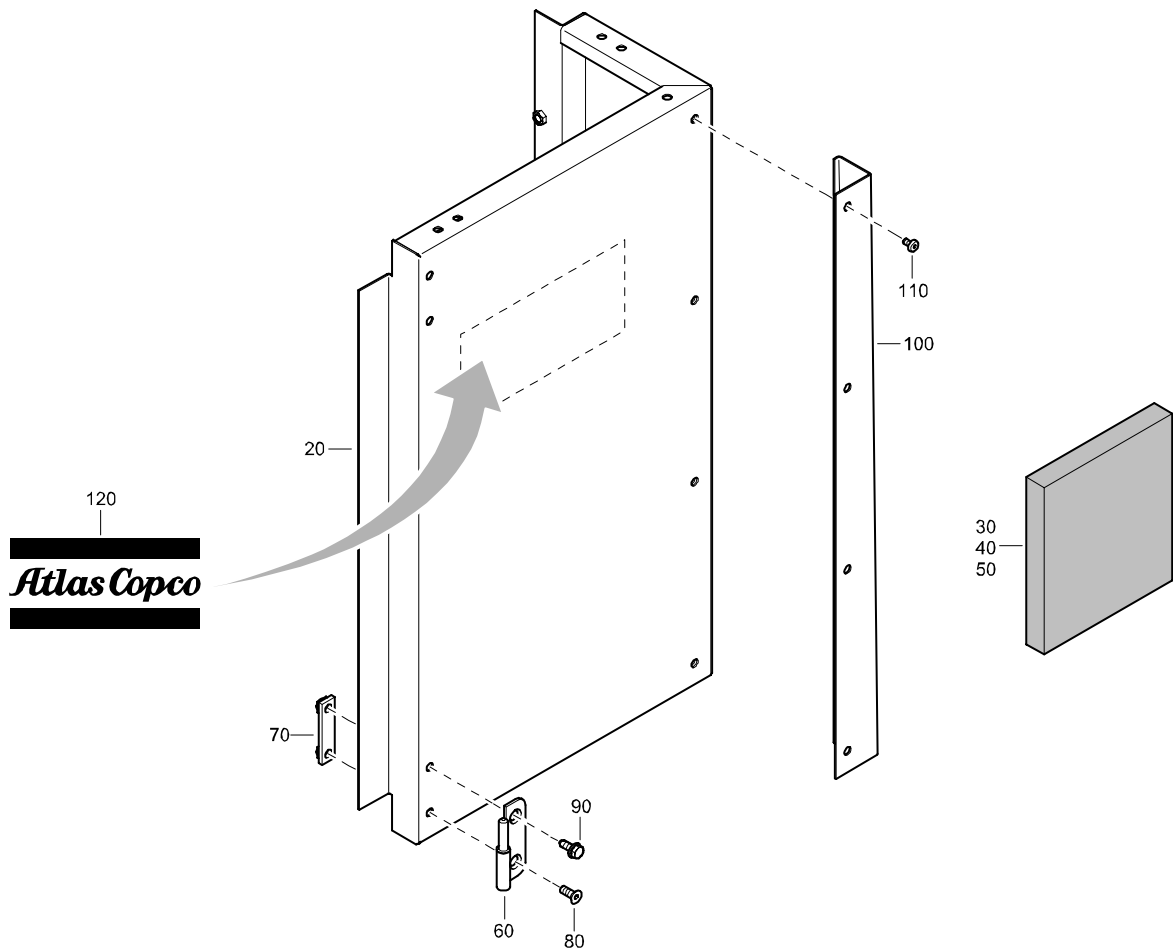
CORNER



REF	PART NUMBER	DESIGNATION	QTY	REF	PART NUMBER	DESIGNATION	QTY
-	1310 4029 80	CORNER	(From page 16)				
•20	1310 4029 00	CORNER	1				
•30	1310 4030 00	SILENCING FOAM	1				
•40	1310 4031 00	SILENCING FOAM	1				
•50	1310 4018 00	SILENCING FOAM	1				
•60	1604 3428 00	HINGE	2				
•70	1615 5684 00	BRACKET	2				
•80	0216 1324 03	HEX SOCK. SCREW	2				
•90	1619 2766 00	HEX.HEAD SCREW	2				
•100	1310 4020 00	BEAM	1				
•110	0690 1125 01	LABEL	1				
•120	0215 0003 77	HEX SOCK. SCREW	4				

STANDARD

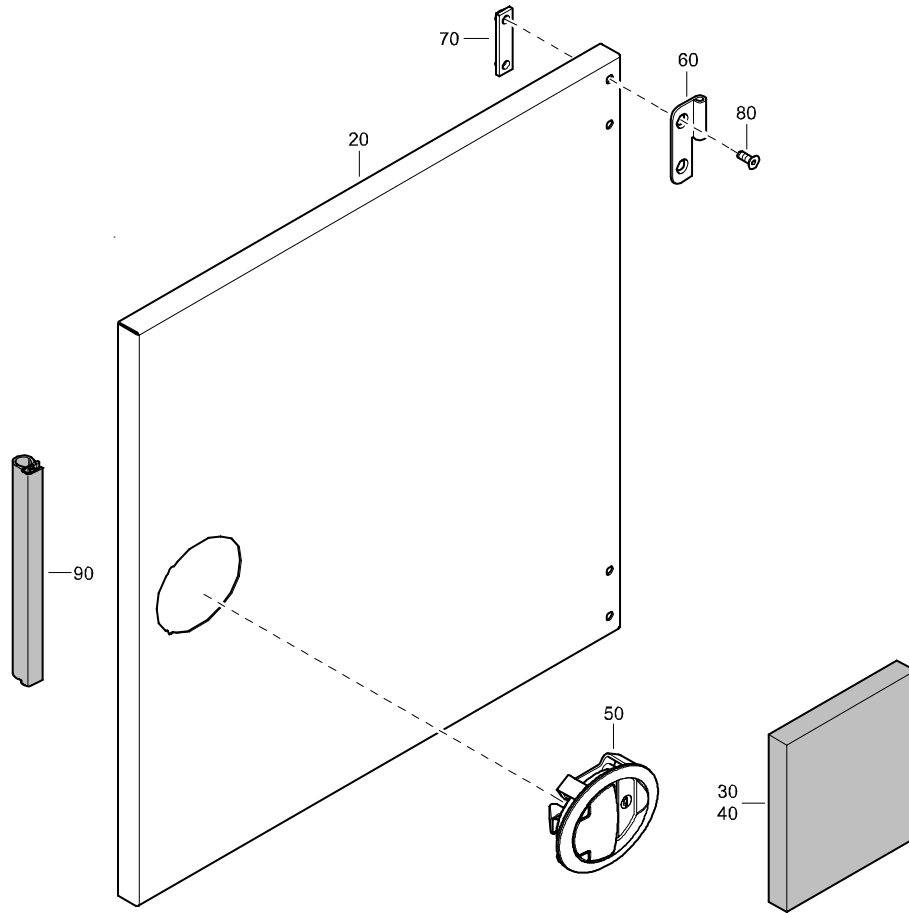
CORNER



REF	PART NUMBER	DESIGNATION	QTY	REF	PART NUMBER	DESIGNATION	QTY
-	1310 4029 90	CORNER	(From page 16)				
•20	1310 4029 00	CORNER	1				
•30	1310 4030 00	SILENCING FOAM	1				
•40	1310 4031 00	SILENCING FOAM	1				
•50	1310 4018 00	SILENCING FOAM	1				
•60	1604 3430 00	HINGE	2				
•70	1615 5684 00	BRACKET	2				
•80	0216 1324 03	HEX SOCK. SCREW	2				
•90	1619 2766 00	HEX HEAD SCREW	2				
•100	1310 4028 00	BEAM	1				
•110	0215 0003 77	HEX SOCK.SCREW	4				
•120	0690 1125 01	LABEL	1				

STANDARD

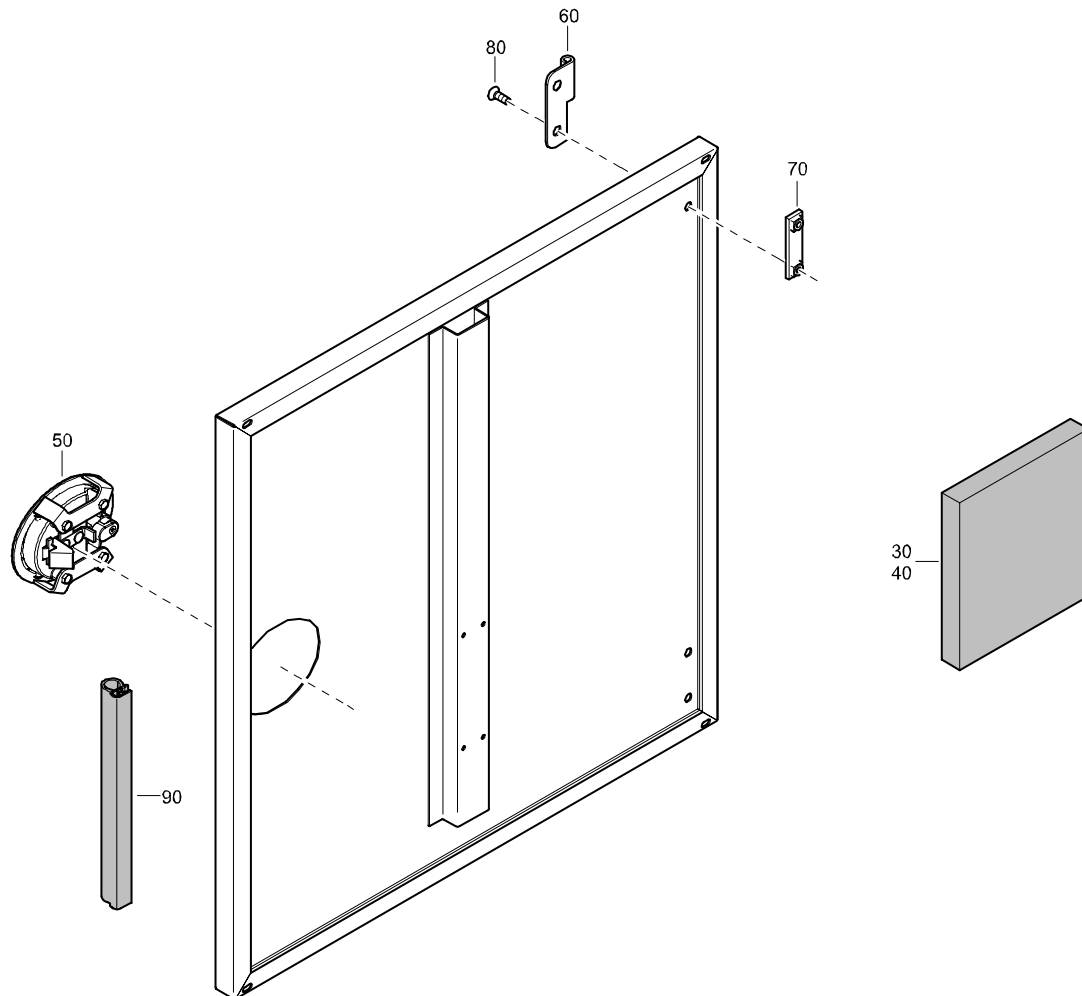
DOOR



REF	PART NUMBER	DESIGNATION	QTY	REF	PART NUMBER	DESIGNATION	QTY
-	1310 4033 80	DOOR	(From page 16)				
•20	1310 4033 00	DOOR	1				
•30	1310 4034 00	SILENCING FOAM	1				
•40	1310 4035 00	SILENCING FOAM	1				
•50	1604 6151 00	HANDLE	1				
•60	1604 3431 00	HINGE	2				
•70	1615 5684 00	BRACKET	2				
•80	0216 1324 03	HEX SOCK. SCREW	4				
•90	1310 4022 00	SEAL	10				

STANDARD

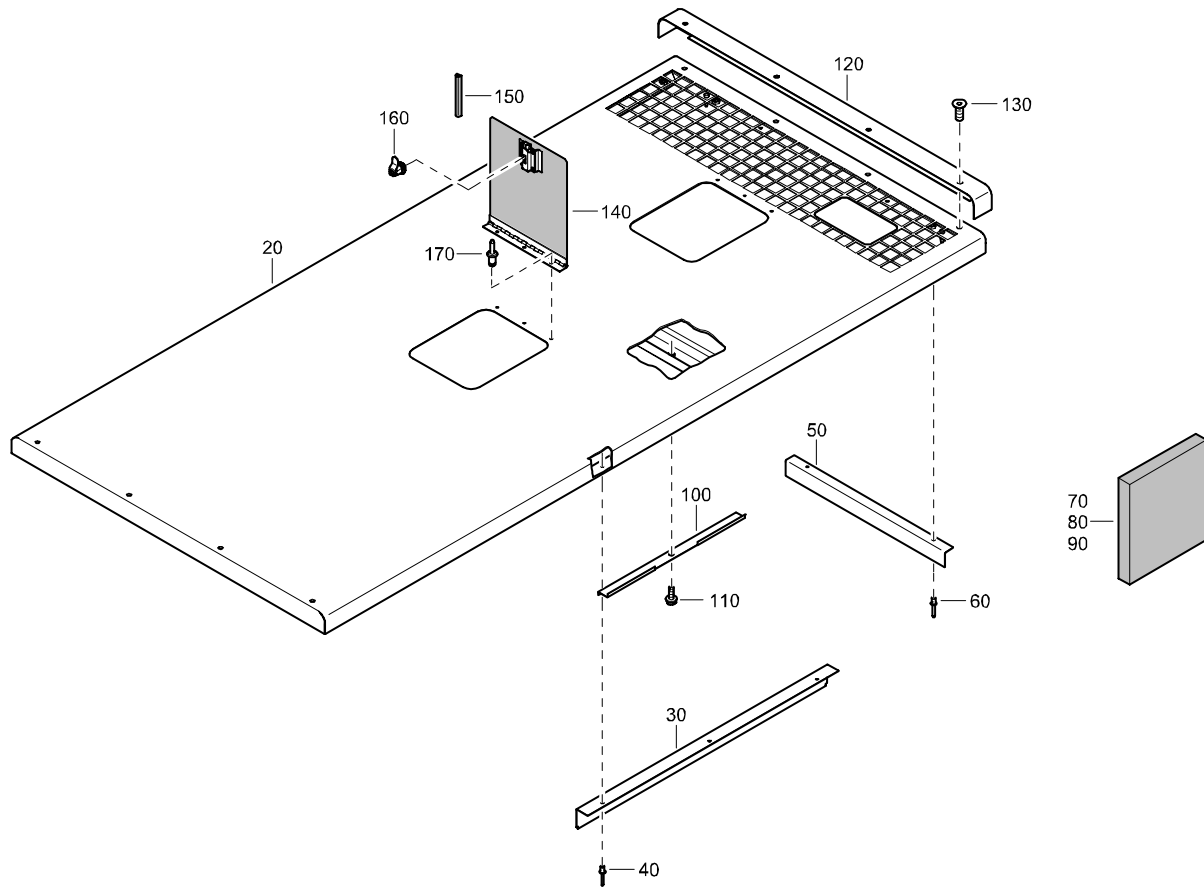
DOOR



REF	PART NUMBER	DESIGNATION	QTY	REF	PART NUMBER	DESIGNATION	QTY
-	1310 4033 90	DOOR	(From page 16)				
•20	1310 4033 00	DOOR	1				
•30	1310 4034 00	SILENCING FOAM	1				
•40	1310 4035 00	SILENCING FOAM	1				
•50	1604 6151 00	HANDLE	1				
•60	1604 3429 00	HINGE	2				
•70	1615 5684 00	BRACKET	2				
•80	0216 1324 03	HEX SOCK. SCREW	4				
•90	1310 4022 00	SEAL	10				

STANDARD

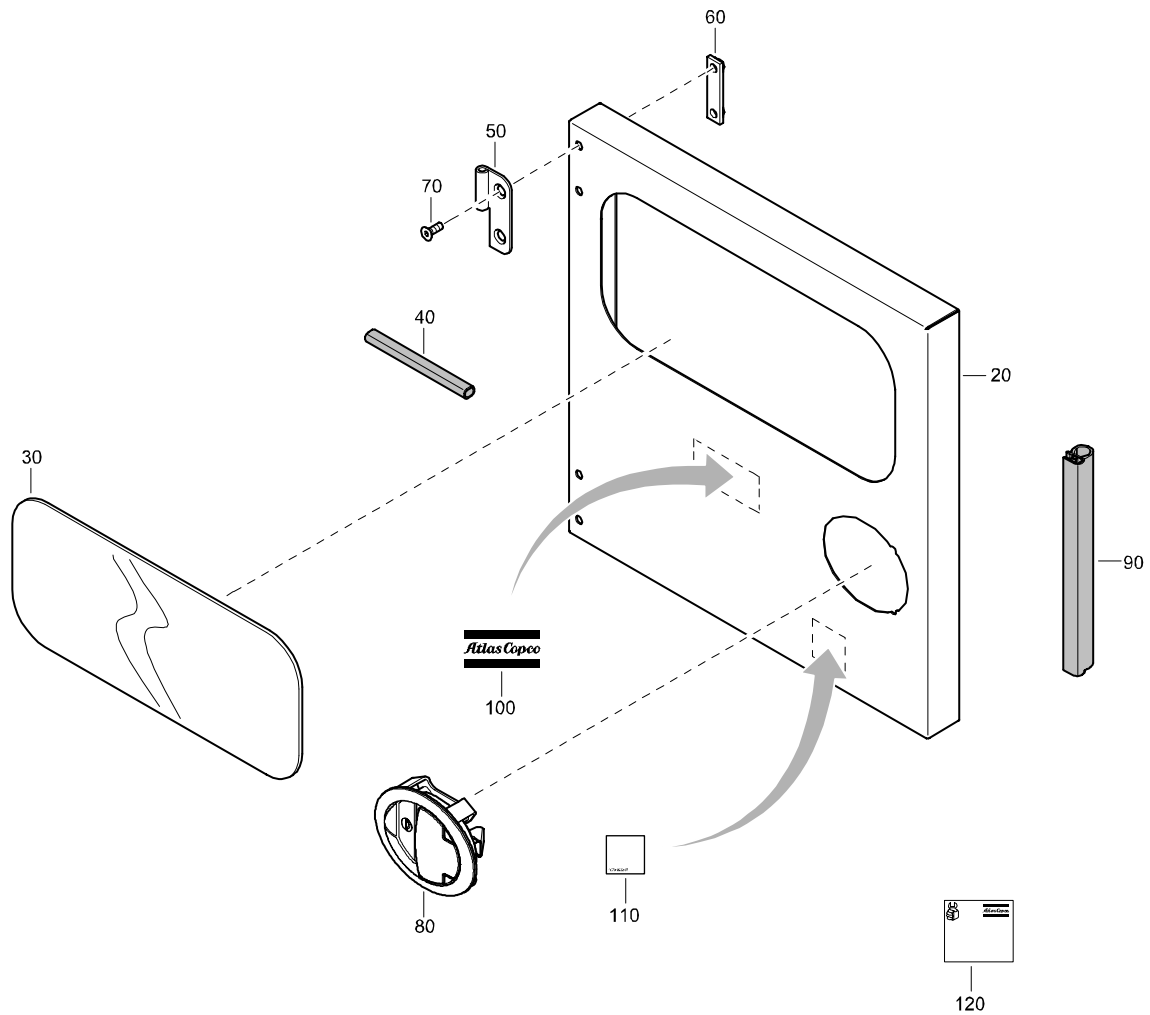
ROOF



REF	PART NUMBER	DESIGNATION	QTY	REF	PART NUMBER	DESIGNATION	QTY
-	1310 4036 81	ROOF	(From page 16)				
•20	1310 4036 01	ROOF	1				
•30	1310 4040 00	PROFILE	2				
•40	0129 3172 01	RIVET	6				
•50	1310 4041 00	PROFILE	1				
•60	0129 3172 01	RIVET	2				
•70	1310 4037 00	SILENCING FOAM	1				
•80	1310 4038 01	SILENCING FOAM	1				
•90	1310 4039 01	SILENCING FOAM	1				
•100	1310 4043 00	SUPPORT	4				
•110	1619 2766 00	HEX HEAD SCREW	4				
•120	1310 4042 00	BEAM	2				
•130	0215 0003 77	HEX SOCK. SCREW	8				
•140	1310 4032 00	DOOR	2				
•150	1310 0316 39	SEAL	5				
•160	1615 5692 00	LOCK	2				
•170	0129 3172 01	RIVET	6				

STANDARD

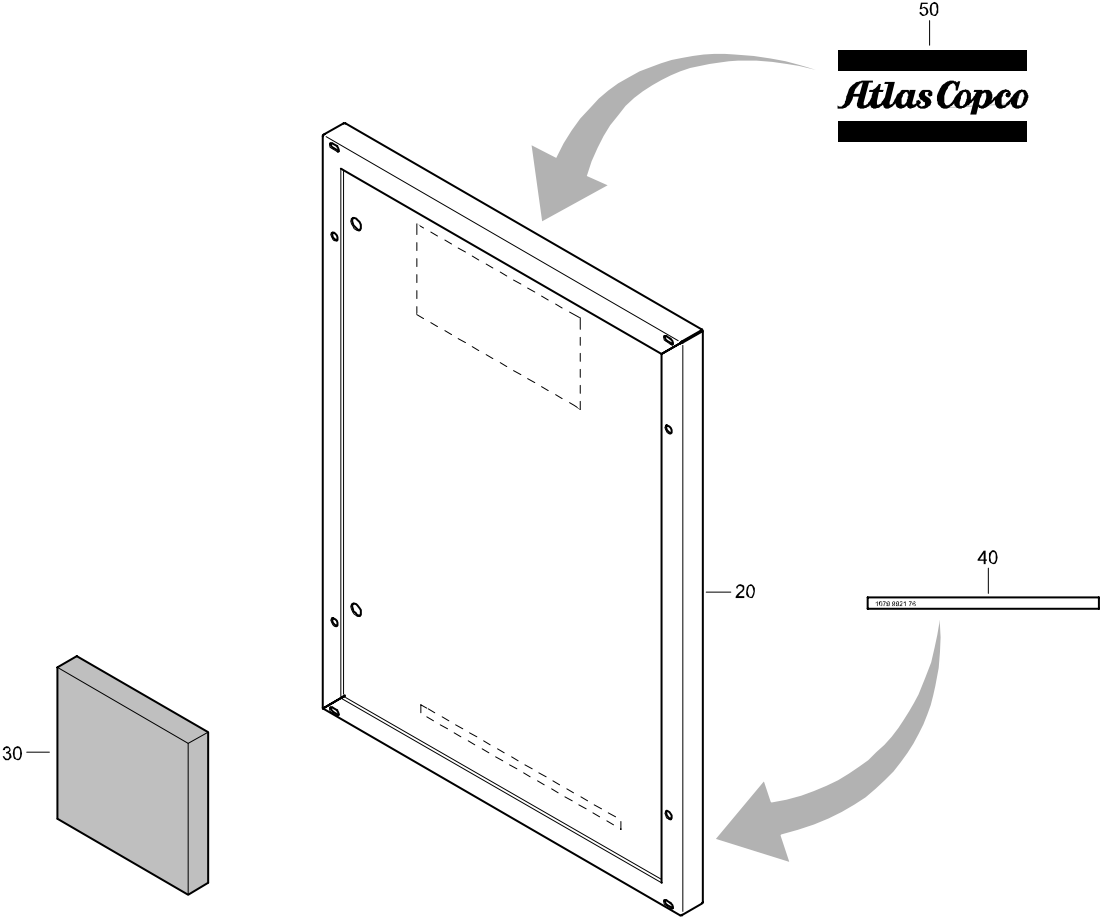
DOOR



REF	PART NUMBER	DESIGNATION	QTY	REF	PART NUMBER	DESIGNATION	QTY
-	1310 4044 80	DOOR	(From page 16)				
•20	1310 4044 00	DOOR	1				
•30	1310 4048 00	WINDOW	1				
•40	1310 4049 00	SEAL	5				
•50	1604 3429 00	HINGE	2				
•60	1615 5684 00	BRACKET	2				
•70	0216 1324 03	HEX SOCK. SCREW	4				
•80	1604 6151 00	HANDLE	1				
•90	1310 4022 00	SEAL	5				
•100	0690 1101 25	HOUSE MARK	1				
•110	1079 9922 07	INFORMATION LABEL	1				
•120	1310 4945 00	LABEL SERVICE PAK	1				

STANDARD

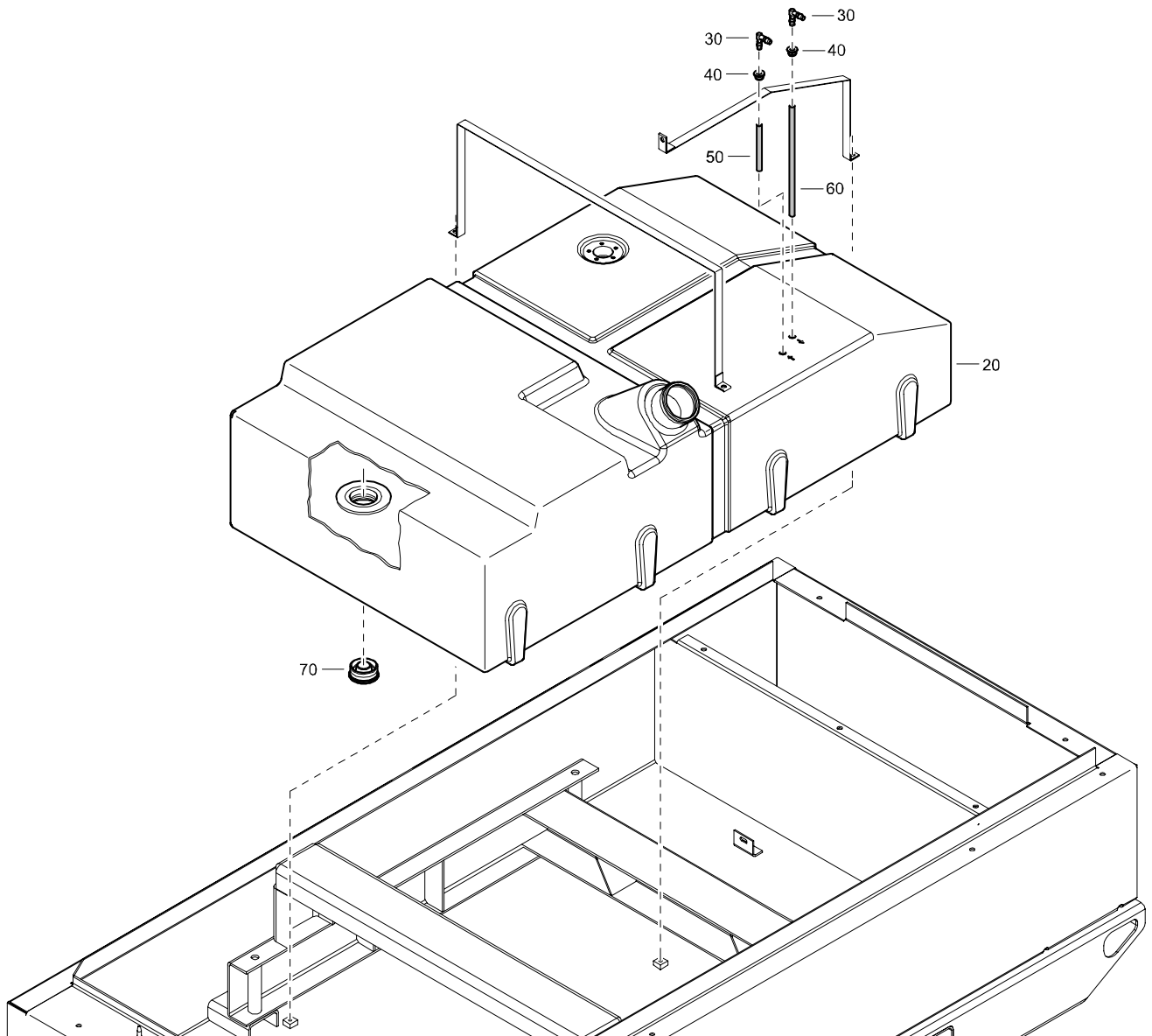
PANEL



REF	PART NUMBER	DESIGNATION	QTY	REF	PART NUMBER	DESIGNATION	QTY
-	1310 4045 80	PANEL	(From page 16)				
•20	1310 4045 00	PANEL	1				
•30	1310 4046 00	SILENCING FOAM	1				
•40	1079 9921 76	LABEL	1				
•50	0690 1125 00	LABEL	1				

STANDARD

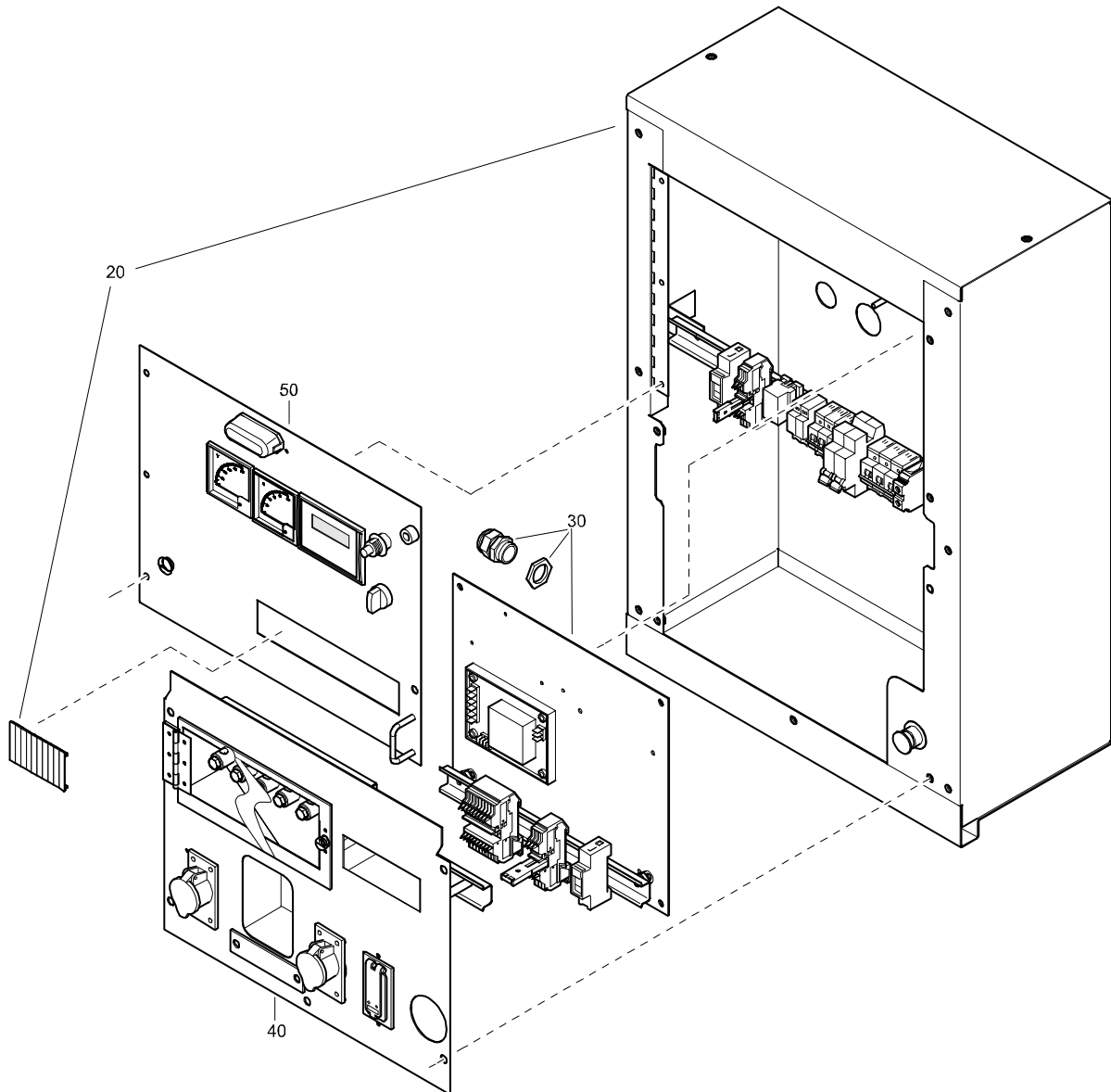
FUEL TANK



REF	PART NUMBER	DESIGNATION	QTY	REF	PART NUMBER	DESIGNATION	QTY
-	1310 4061 80	FUEL TANK	(From page 20)				
•20	1310 4061 00	FUEL TANK	1				
•30	1310 0349 94	ELBOW	2				
•40	1310 0349 92	GROMMET	2				
•50	1310 0302 29	TUBE	AR				
•60	1310 4094 00	TUBE	1				
•70	1615 5577 00	PLUG	1				

STANDARD

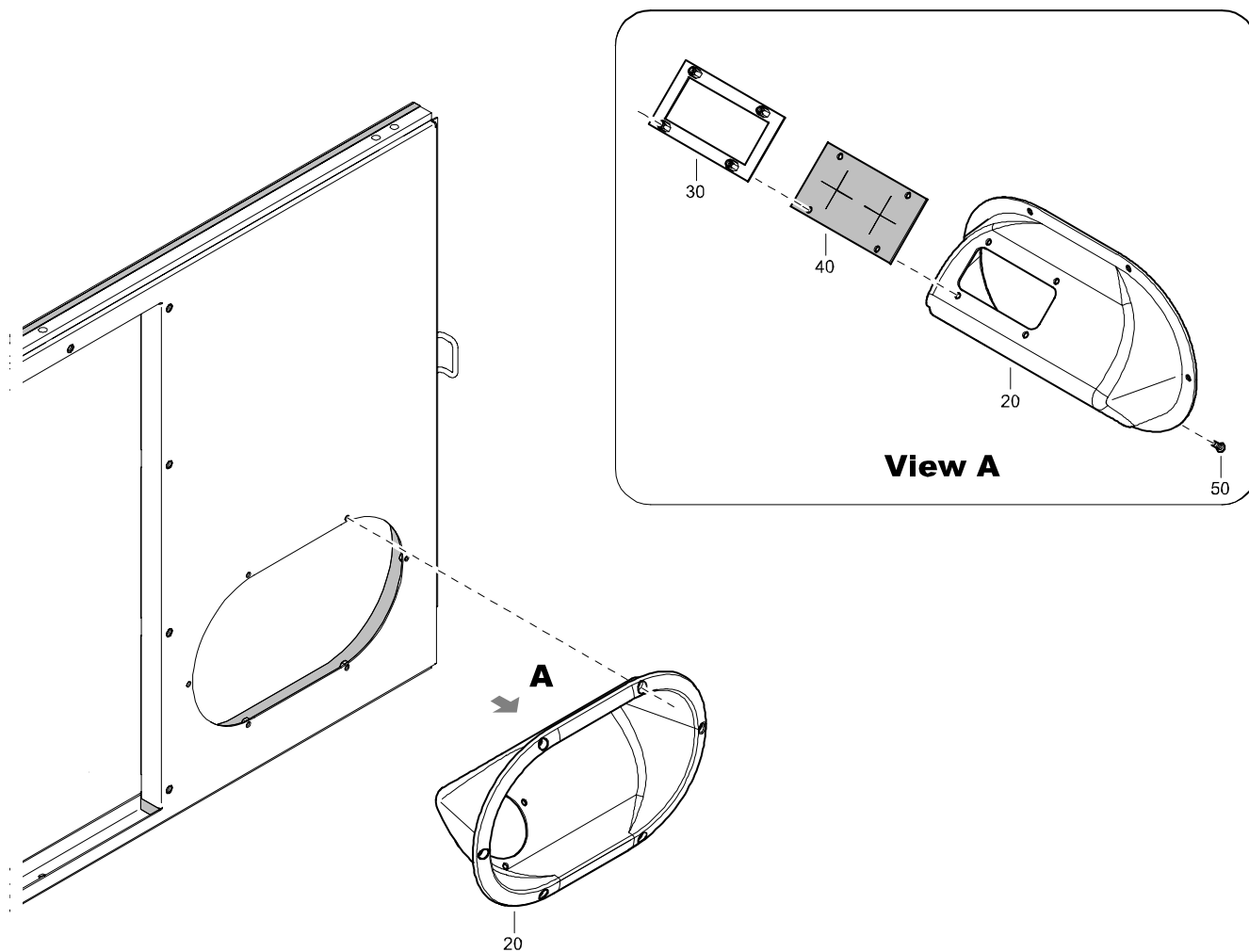
CUBICLE ASSEMBLY



REF	PART NUMBER	DESIGNATION	QTY	REF	PART NUMBER	DESIGNATION	QTY
-	1310 4095 00	CUBICLE ASSEMBLY (From page 27)					
•20	1900 1031 30	CUBICLE (For details see page 44)	1				
•30	1900 1031 40	PLATE ASSEMBLY AVR (For details see page 45)	1				
•40	1900 1031 70	SOCKET PANEL (For details see page 46)	1				
•50	1900 1031 87	CONTROL PANEL (For details see page 47)	1				

STANDARD

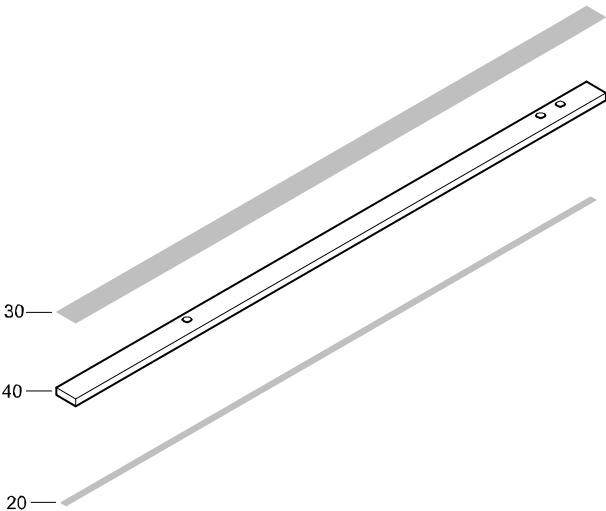
FUNNEL



REF	PART NUMBER	DESIGNATION	QTY	REF	PART NUMBER	DESIGNATION	QTY
-	1604 5037 80	FUNNEL	(From page 20)				
•20	1604 5037 01	FUNNEL	1				
•30	1604 6296 00	PLATE	1				
•40	1604 6295 00	SEAL	1				
•50	3222 3112 92	BOLT	4				

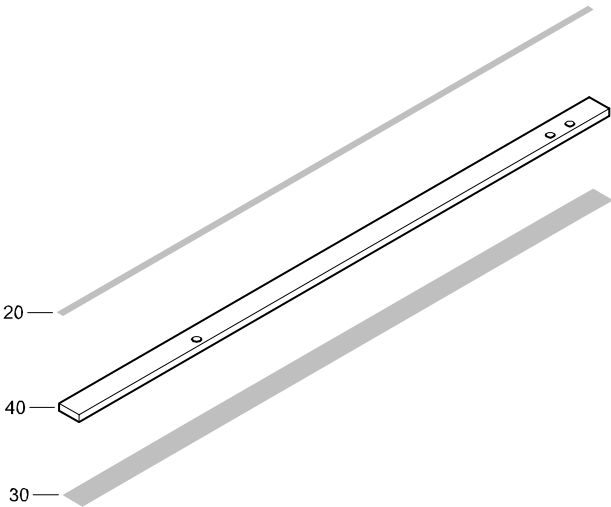
STANDARD

STRIP



REF	PART NUMBER	DESIGNATION	QTY
-	1310 4021 80	STRIP	(From page 30)
•20	1310 0320 16	TAPE	AR
•30	1310 4023 00	SEAL	AR
•40	1310 4021 00	STRIP	1

1310 4021 80/00

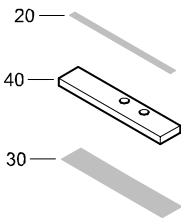


REF	PART NUMBER	DESIGNATION	QTY
-	1310 4021 90	STRIP	(From page 30)
•20	1310 0320 16	TAPE	AR
•30	1310 4023 00	SEAL	AR
•40	1310 4021 00	STRIP	1

1310 4021 90/00

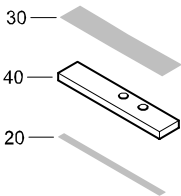
STANDARD

STRIP



REF	PART NUMBER	DESIGNATION	QTY
-	1310 4024 80	STRIP	(From page 30)
•20	1310 0320 16	TAPE	AR
•30	1310 4023 00	SEAL	AR
•40	1310 4024 00	STRIP	1

1310 4024 80/00

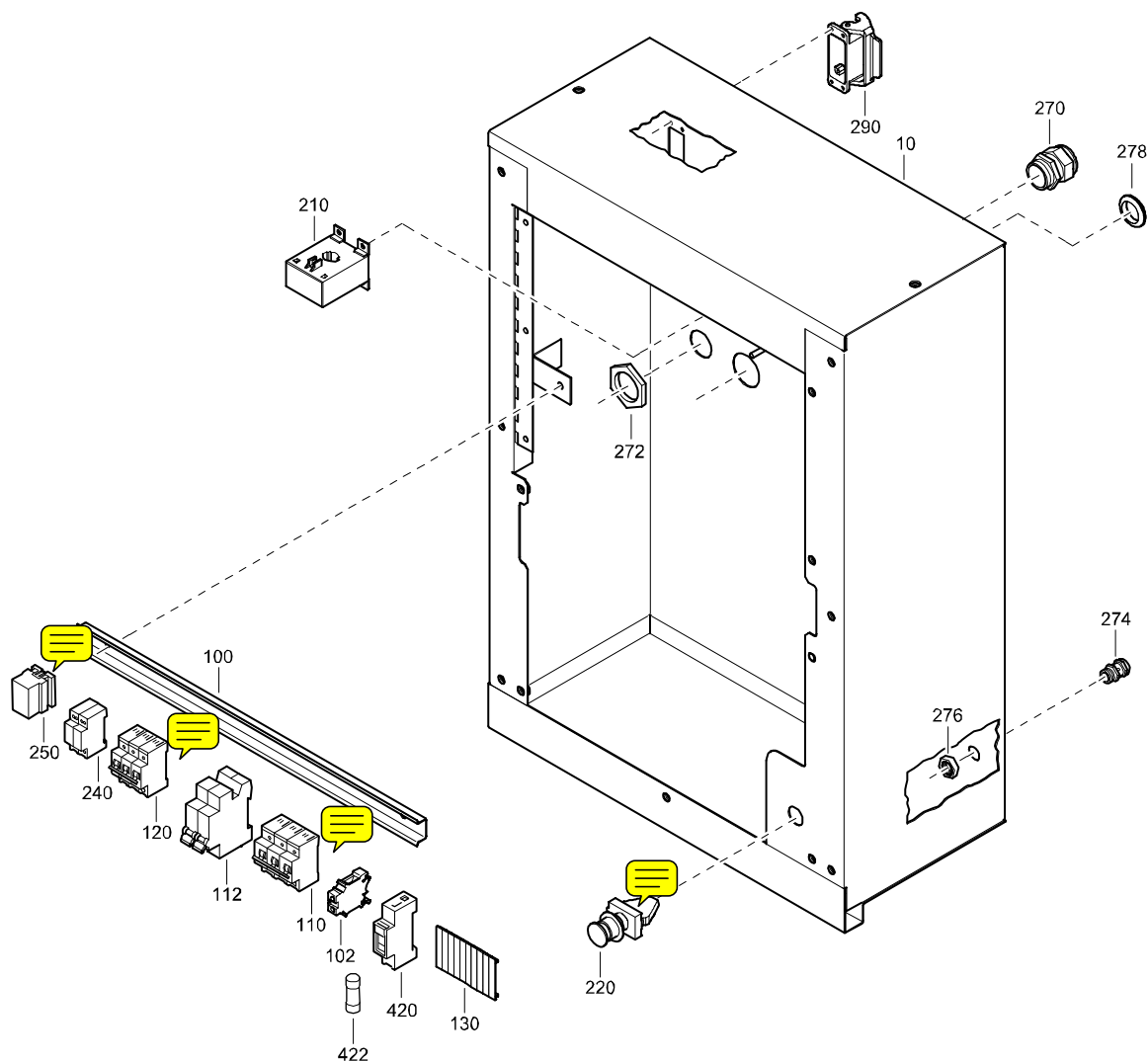


REF	PART NUMBER	DESIGNATION	QTY
-	1310 4024 90	STRIP	(From page 30)
•20	1310 0320 16	TAPE	AR
•30	1310 4023 00	SEAL	AR
•40	1310 4024 00	STRIP	1

1310 4024 90/00

STANDARD

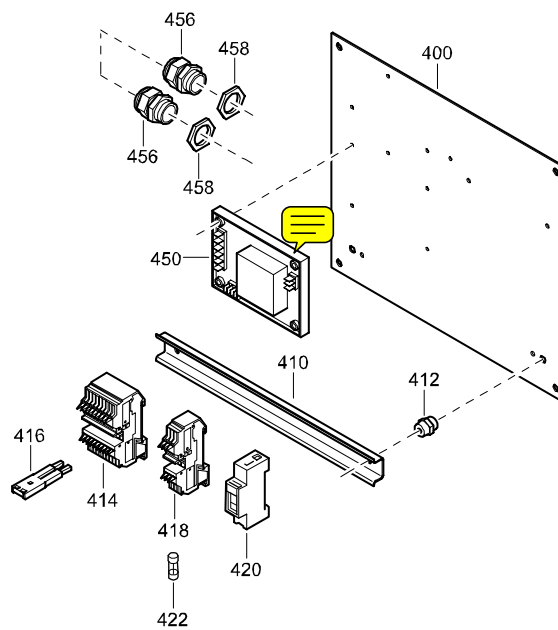
CUBICLE



REF	PART NUMBER	DESIGNATION	QTY	REF	PART NUMBER	DESIGNATION	QTY
-	1900 1031 30	CUBICLE	(From page 40)				
•10	1604 4916 01	BOX	1				
•100	0090 1400 02	RAIL	AR				
•102	1089 0577 19	TERMINAL	3				
•110	1089 9472 53	CIRCUIT BREAKER	1				
•112	1089 9473 13	TRIP COIL	2				
•120	1089 9472 34	CIRCUIT BREAKER	1				
•130	1088 0500 05	COVER PLATE	11				
•210	1089 9357 54	CURRENT TRANSFORMER	1				
•220	1089 9422 01	EMERGENCY STOP	1				
•240	1089 9384 01	AUXILIARY RELAY	2				
•250	1089 9400 08	CONTACTOR	1				
•270	0698 5140 75	CABLE GLAND	2				
•272	0697 9809 24	LOCKNUT	2				
•274	0698 5140 71	CABLE GLAND	1				
•276	0697 9809 20	LOCKNUT	1				
•278	1088 0801 10	GROMMET	1				
•290	1088 0029 50	HOUSING	1				
•420	1089 9333 03	FUSE HOLDER	1				
•422	1089 9332 01	FUSE	3				

STANDARD

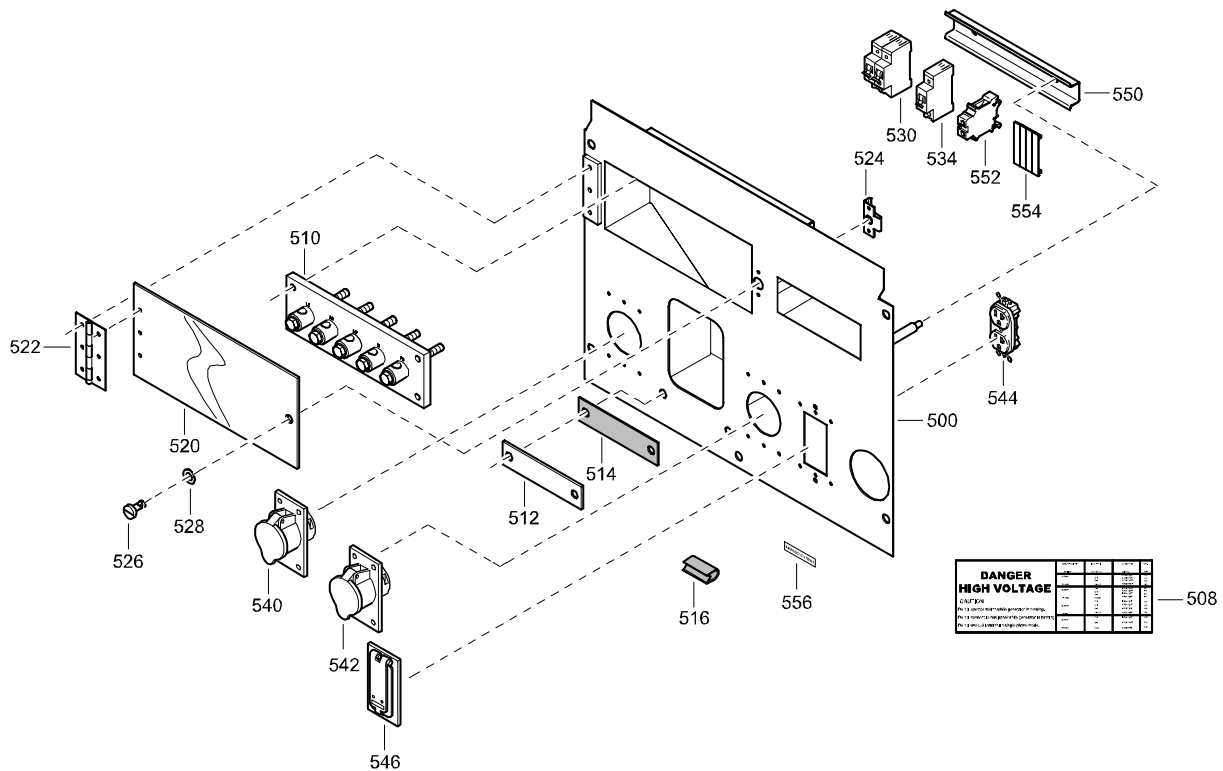
PLATE ASSEMBLY AUTOMATIC VOLTAGE REGULATOR



REF	PART NUMBER	DESIGNATION	QTY	REF	PART NUMBER	DESIGNATION	QTY
-	1900 1031 40	PLATE ASSEMBLY AVR (From page 40)					
•400	1604 5065 03	PLATE	1				
•410	0090 1400 02	RAIL	AR				
•412	1089 9385 11	ISOLATOR	2				
•414	1089 0577 53	TERMINAL	7				
•416	1089 0577 83	JUMPER BAR	2				
•418	1089 0577 62	TERMINAL	3				
•420	1089 9333 04	FUSE HOLDER	1				
•422	1089 9332 01	FUSE	3				
•450	1089 9592 01	VOLTAGE REGULATOR	1				
•456	0698 5140 73	CABLE GLAND	2				
•458	0697 9809 22	LOCK NUT	2				

STANDARD

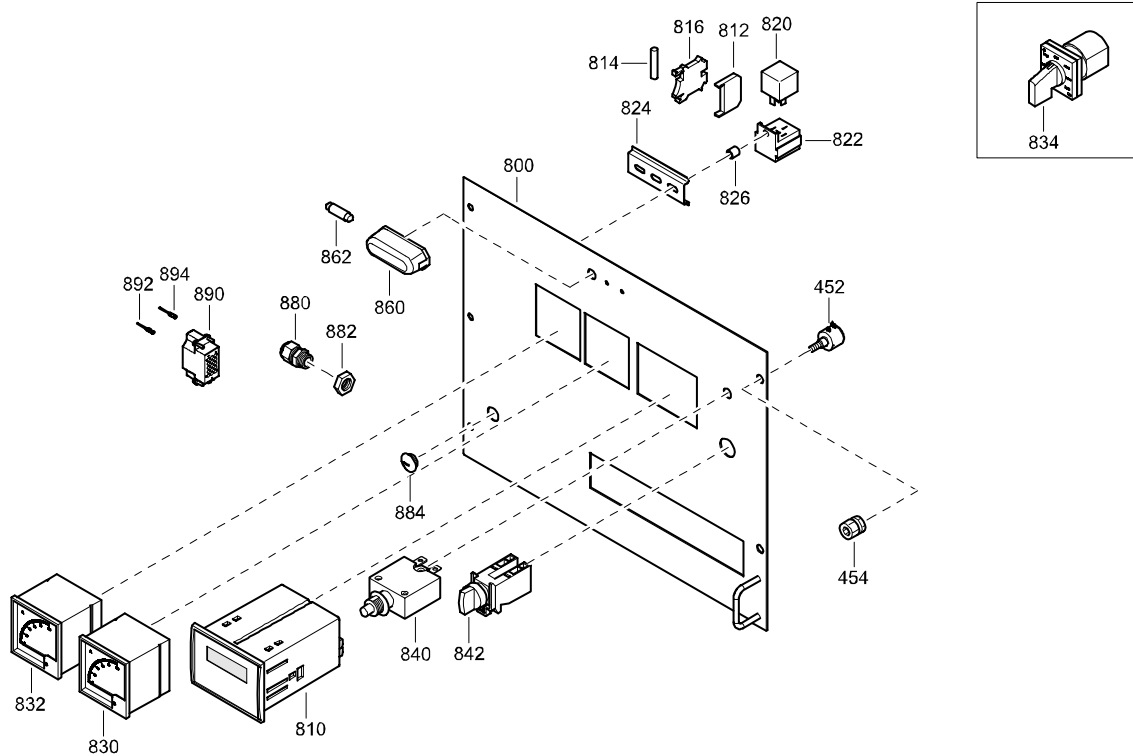
SOCKET PANEL



REF	PART NUMBER	DESIGNATION	QTY	REF	PART NUMBER	DESIGNATION	QTY
-	1900 1031 70	SOCKET PANEL	(From page 40)				
•500	1604 9076 01	SOCKET PANEL	1				
•508	1079 9925 84	LABEL TERM.BOARD	1				
•510	1604 6174 00	TERMINAL BOARD	1				
•512	1604 6622 01	PLATE	1				
•514	1604 6328 01	SEAL	1				
•516	1503 1056 00	SEAL	AR				
•520	1604 5048 01	SCREEN	1				
•522	1604 5052 00	HINGE	1				
•524	1615 6728 00	PLATE	1				
•526	1615 7166 00	STUD	1				
•528	1615 6727 00	WASHER	1				
•530	1089 9472 25	CIRCUIT BREAKER	2				
•534	1089 9472 21	CIRCUIT BREAKER	1				
•540	1089 9412 02	RECEPTACLE	2				
•542	1089 9412 12	PROTECTION COVER	2				
•544	1089 9412 01	RECEPTACLE	1				
•546	1089 9412 11	PROTECTION COVER	1				
•550	0090 1400 02	RAIL	AR				
•552	1089 0577 19	TERMINAL	3				
•554	1088 0500 05	COVER PLATE	4				
•556	1079 9910 05	LABEL EMERGENCY STOP	1				

STANDARD

CONTROL PANEL



REF	PART NUMBER	DESIGNATION	QTY	REF	PART NUMBER	DESIGNATION	QTY
-	1900 1031 87	CONTROL PANEL (From page 40)		•894	1088 0029 55	MALE CONTACT	2
•452	1089 9371 21	POTMETER	1				
•454	1089 9371 50	SPINDLE LOCK	1				
•800	1604 6427 01	CONTROL PANEL	1				
•810	1089 9561 83	Qc1001 CONTROLLER	1				
•812	1089 0506 19	DIODE	1				
•814	1089 0310 14	RESISTOR	1				
•816	1089 0577 12	TERMINAL	5				
•820	1089 0341 07	RELAY	2				
•822	1089 0358 01	SOCKET	2				
•824	0993 7106 07	RAIL	AR				
•826	0324 1102 00	DISTANCE SLEEVE	2				
•830	1089 9381 17	AMPERE METER	1				
•832	1089 9383 01	VOLTMETER	1				
•834	1089 9082 22	VOLTAGE SWITCH	1				
•840	1089 9423 01	CIRCUIT BREAKER	1				
•842	1089 0263 11	SELECTOR SWITCH	1				
•860	1089 9354 01	PANELLIGHT	1				
•862	1619 1609 00	BULB	1				
•880	0698 5140 71	CABLE GLAND	1				
•882	0697 9809 20	LOCKNUT	1				
•884	0697 9810 25	PLUG	1				
•890	1088 0029 45	MALE INSERT	1				
•892	1088 0029 61	MALE CONTACT	10				

