

Registration code

Atlas Copco

Collection: APC Q
Tab: 39
Sequence: 0999

1992-11

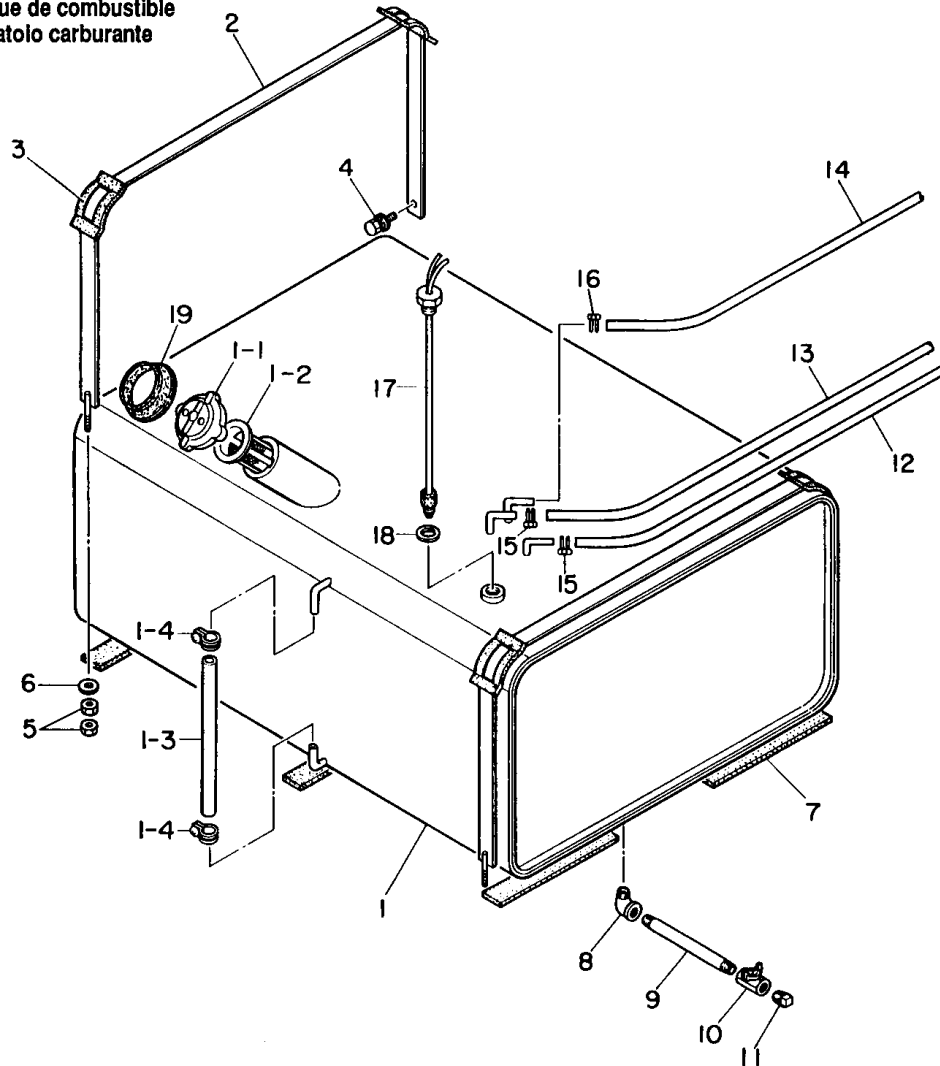
Parts list for generators
Onderdelenlijst voor generatoren
Reservdelsförteckning för generatorer
Teilliste für Generatoren
Liste de pièces pour génératrices
Lista de las partes para generadores
Listino parti di ricambio per generatori

QAS300 Kd

Page	Contents
Blz.	Inhoud
Sida	Innehåll
Selte	Inhaltsverzeichnis
Pag.	Table des matières
Pág.	Indice
Pag.	Indice

3	Fuel tank Brandstoftank Bränsletank Kraftstoffbehälter Réservoir à combustible Tanque de combustible Serbatoio carburante	13	Battery connections Batterij-aansluitingen Batterianslutningar Batterieanschlüsse Connexions de batterie Conexiones de batería Collegamenti batteria
5	Generator parts Generatoronderdelen Generatordelar Generatorteile Pièces de génératrice Partes del generador Componenti generatore	15	Bodywork Karrosserie Karossen Karosserie Capotage Carrocería Cappottatura
7	Control panel Bedieningsbord Manöverpanel Armaturenbrett Panneau de commande Panel de control Pannello di controllo	16	Exhaust Uitlaat Avgasning Auspuff Echappement Escape Scarico gas combusti
9	Engine cooling system Motorkoelsysteem Motorkylsystem Motorkühlsystem Système de refroidissement du moteur Sistema de refrigeración del motor Sistema di raffreddamento motore	17	Oil pump Oliepomp Öljepump Ölpumpe Pompe à huile Bomba de aceite Pompa dell'olio
11	Engine operating panel Motorbedieningspaneel Motorns kontrollpanel Motorsteuertafel Tableau, marche du moteur Panel de funcionamiento del motor Pannello di controllo motore		

Fuel tank
 Brandstoftank
 Bränsletank
 Kraftstoffbehälter
 Réservoir à combustible
 Tanque de combustible
 Serbatoio carburante

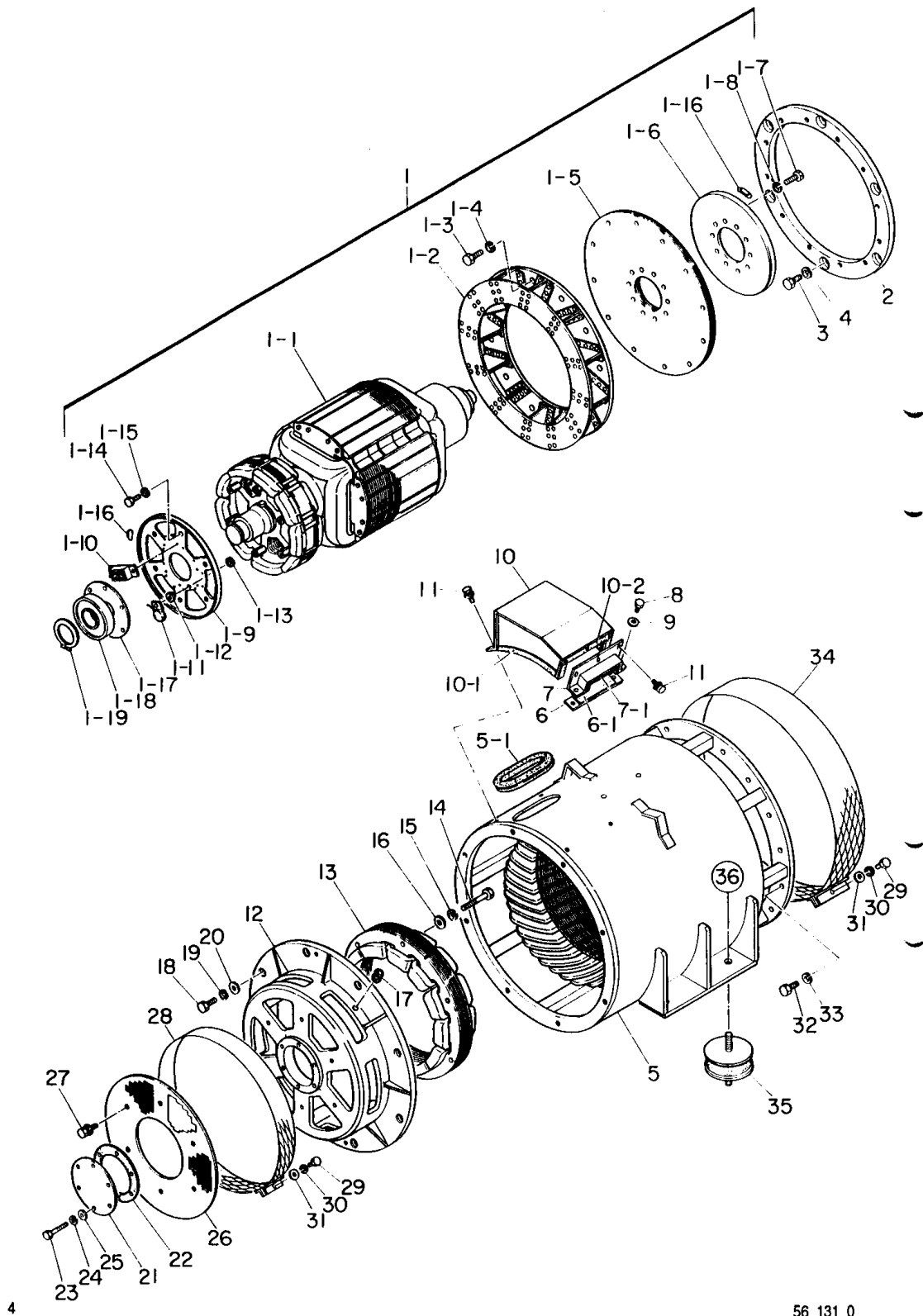


Ref.	A	B	C	D	Designation
1	2914 6220 00			1	Fuel tank
1.1	2900 5179 00	•		1	Cap
x	2900 6978 00		1)	1	Cap with key
x	2912 6004 00			1	Spare key
1.2	2900 5180 00	•		1	Strainer
2	2914 6221 00			2	Strap
3	2914 6102 00			4	Pad
4	0147 1323 03			2	Bolt
5	0266 2110 00			4	Nut

Ref.	A	B	C	D	Designation
7	2914 6222 00			6	Pad
17	2900 5154 00			1	Level device
19	2900 5193 00			1	Seal

1) Optional / Als optie / Extra utrustning / Extra Ausstattung /
 Optionnel / Como opción / Su richiesta

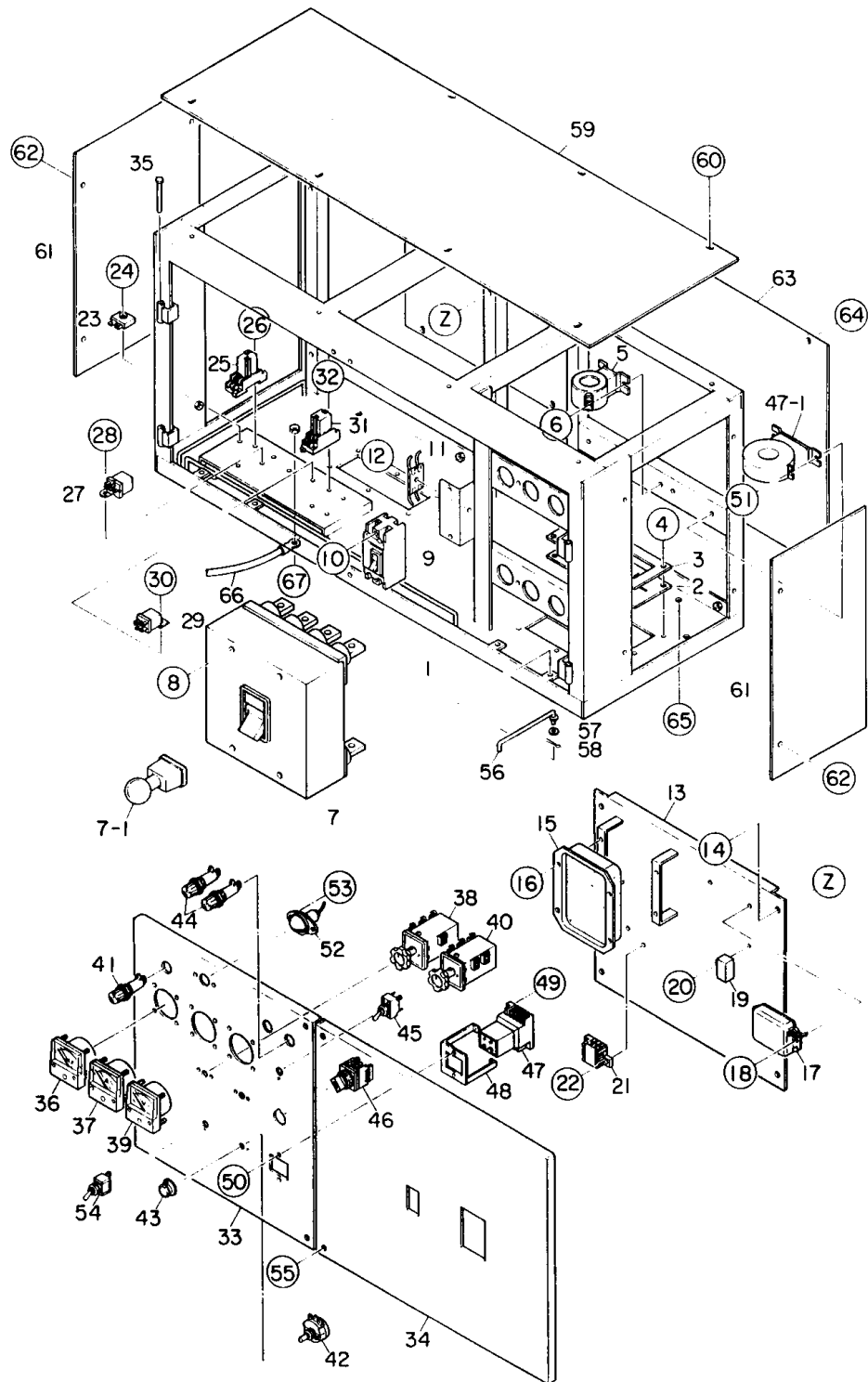
56_128_0_0_0



Generator parts
 Generatoronderdelen
 Generatordelar
 Generatorteile
 Pièces de génératrice
 Partes del generador
 Componenti generatore

Ref.	A	B	C	D	Designation	Ref.	A	B	C	D	Designation
-	2914 6893 80		1	Generator assembly	1.18	2914 6772 00	••1		Bearing
1	2914 6769 00	•1		Rotor assembly	1.19	2914 6773 00	••1		Snap ring
1.1	•••	••1		Field assembly	2	2914 6143 00	•1		Coupling ring
1.2	2914 6139 00	••1		Fan	5	2914 6775 00	•1		Stator assembly
1.3	0147 1403 03	••12		Bolt	6	2914 6777 00	•1		Clamp
1.5	2914 6140 00	••12		Coupling disk	7	2914 6779 00	•1		Clamp
1.6	2914 6141 00	••1		Flywheel	10	2914 6781 00	•1		Cover
1.9	2914 6770 00	••1		Base plate	11	0147 1246 03	•6		Bolt
1.10	2900 6055 00	••3		Rectifier	12	2914 6784 00	•1		Bearing housing
1.11	2900 6879 00	••1		Surge absorber	13	2914 6149 00	•1		Field assembly, exciter
1.12	2900 6880 00	••1		Isolator	21	2914 6786 00	•1		Cover
1.13	2900 6881 00	••1		Isolator	22	2914 6787 00	•1		Gasket
1.14	0147 1398 03	••6		Bolt	26	2914 6022 00	•1		Cover
1.15	0333 2230 00	••6		Spring washer	28	2900 6898 00	•1		Cover
1.16	2900 5411 00	••1		Counterweight kit	29	0147 1250 03	•2		Bolt
x	2900 5411 05	•••2		Counterweight - 5 g	30	0333 2219 00	•2		Spring washer
x	2900 5411 10	•••2		Counterweight - 10 g	32	0147 1402 03	•16		Bolt
x	2900 5411 15	•••2		Counterweight - 15 g	34	2914 6152 00	•1		Fan guard
x	2900 5411 20	•••2		Counterweight - 20 g	35	2900 6900 00	•4		Antivibration pad
1.17	2914 6771 00	••1		Flange	36	0266 2116 00	•8		Nut

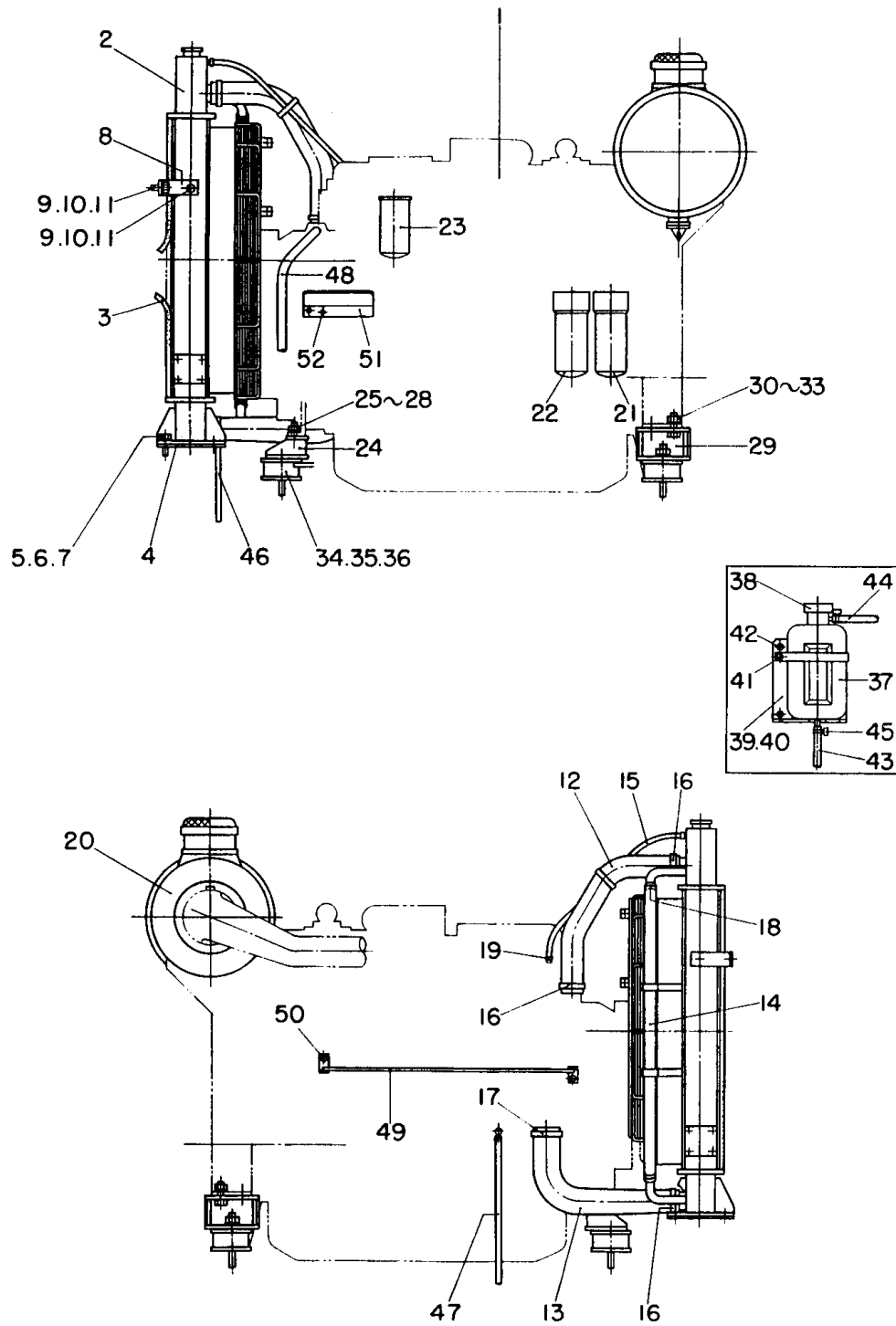
56_131_0_0_0



Control panel
 Bedieningsbord
 Manöverpanel
 Armaturenbrett
 Panneau de commande
 Panel de control
 Pannello di controllo

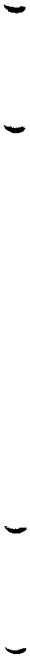
Ref.	A	B	C	D	Designation	Ref.	A	B	C	D	Designation
1	2914 6789 00			1	Control panel	34	2914 6796 00			1	Control panel
2	2900 5781 00			3	Grommet	35	2900 5153 00			4	Pin
3	2900 5782 00			3	Retainer	36	2900 6243 00			1	Frequency meter
4	0147 1247 03			18	Bolt	37	2900 6244 00			1	Ammeter
5	2900 5285 00			2	Transformer	38	2900 5089 00			1	Switch
6	0160 6083 00			4	Screw	39	2900 6245 00			1	Voltmeter
7	2914 6790 00			1	Circuit breaker	40	2900 5090 00			1	Switch
7.1	2914 6791 00			1	Handle	41	2900 5095 00			1	Lamp holder
9	2914 6052 00			1	Circuit breaker	x	2900 5096 00			1	Lamp
10	0160 6054 00			2	Screw	42	2900 5107 00			1	Rheostat
x	0333 2212 00			2	Spring washer	43	2900 5108 00			1	Knob
11	2900 5164 00			1	Resistor	44	2900 5095 00			2	Lamp holder
13	2914 6793 00			1	Mounting panel	x	2900 5096 00			2	Bulb
15	2914 6794 00			1	Voltage regulator	45	2900 5103 00			1	Switch
17	2914 6053 00			1	Timer	46	2914 6797 00			1	Switch
18	0160 6083 00			2	Screw	47	2900 6095 00			1	Relay
19	2900 5374 00			1	Unit, battery sensor	47.1	***			1	Transformer
20	0160 6084 00			1	Screw	48	2900 6067 00			1	Bracket
21	2900 5098 00			1	Terminal block	50	0160 6039 00			2	Screw
22	0160 6042 00			2	Screw	51	0160 6083 00			2	Screw
23	2900 6239 00			2	Rectifier	52	2900 5016 00			1	Light
24	0160 6063 00			2	Screw	x	2900 6902 00			1	Lamp
25	2900 6249 00			1	Relay	54	2900 5104 00			1	Switch
x	2900 6250 00			1	Socket	56	2900 5200 00			2	Stay
x	2900 6472 00			1	Holder	59	2914 6798 00			1	Cover
26	0160 6042 00			2	Screw	60	0147 1323 03			8	Bolt
27	2900 6251 00			1	Relay	61	2914 6799 00			2	Panel
28	0160 6060 00			2	Screw	62	0147 1323 03			8	Bolt
29	2900 5373 00			1	Relay	63	2914 6800 00			1	Panel
30	0160 6083 00			1	Screw	64	0147 1323 03			8	Bolt
31	2900 6240 00			2	Relay	66	2900 6115 00			1	Earth cable
x	2900 5102 00			2	Socket	67	0147 1323 03			2	Bolt
x	2900 6472 00			2	Holder						
32	0160 6042 00			4	Screw						
33	2914 6795 00			1	Control panel						

56_123_0_0_0



Engine cooling system
 Motorkoelsysteem
 Motorkylsystem
 Motorkühlsystem
 Système de refroidissement du moteur
 Sistema de refrigeración del motor
 Sistema di raffreddamento motore

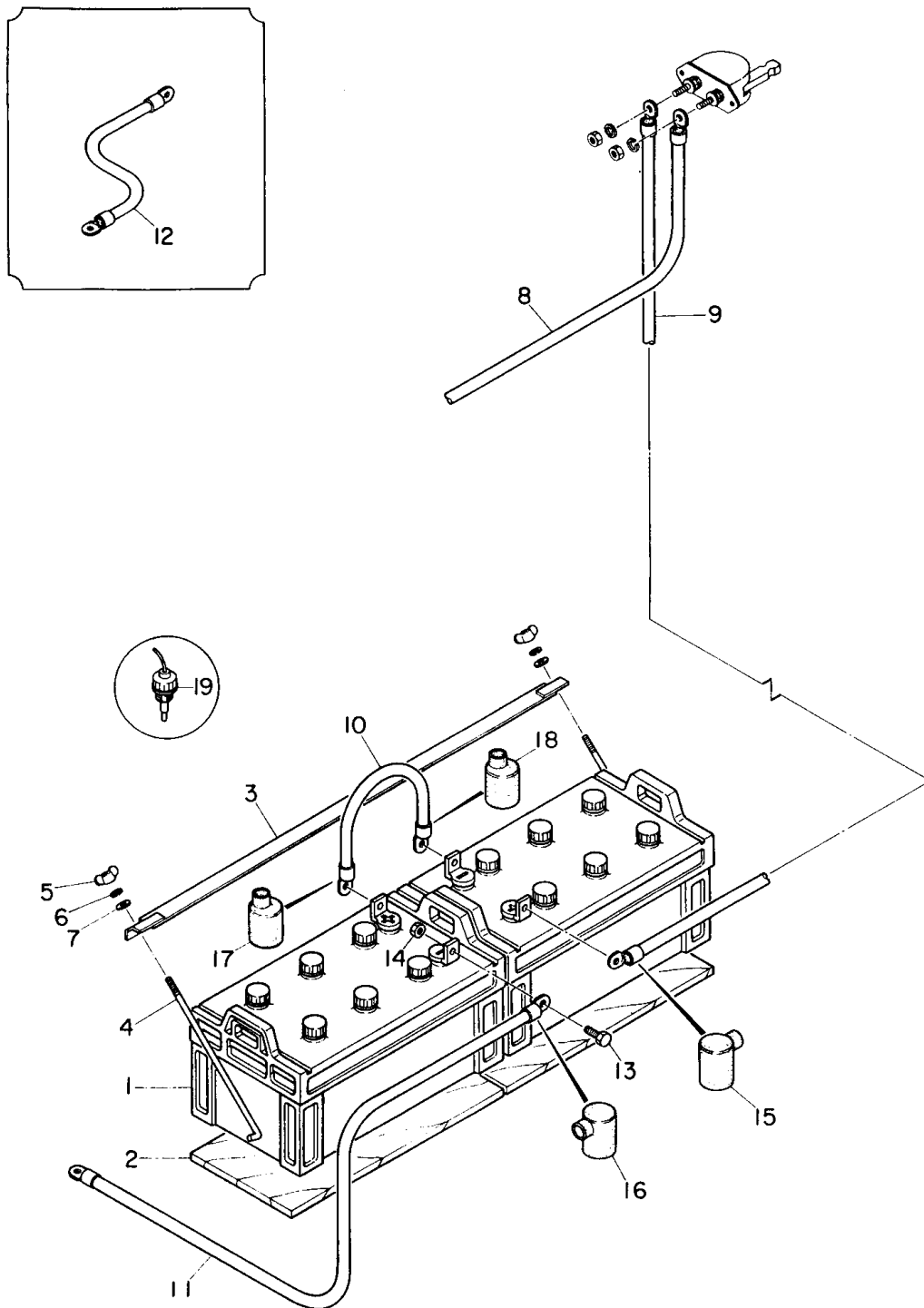
Ref.	A	B	C	D	Designation	Ref.	A	B	C	D	Designation
1	2914 6801 00		1	Engine KOMATSU S6D 140-1	21	2900 5350 00		1	Oil filter element
2	2914 6802 00		1	Radiator KOMATSU 6212- 61-9902	22	2914 6172 00		1	Fuel filter element
4	2914 6165 00		2	Antivibration pad KOMATSU 6995- 61-9230	23	2914 6806 00		1	Corrosion resistor element
8	2914 6894 00		2	Bracket	24	2914 6807 00		1	Engine support
9	0147 1400 03		4	Bolt	29	2900 6810 00		2	Engine support
10	0333 2236 00		4	Lock washer	34	2914 6813 00		4	Anti-vibration pad
12	2914 6167 00		1	Hose KOMATSU 6212- 61-9610	35	0266 2114 00		8	Nut
13	2914 6168 00		1	Hose KOMATSU 6212- 61-9630	36	0333 2243 00		8	Lock washer
14	2914 6169 00		1	Hose KOMATSU 7261- 02612	37	2900 6271 00		1	Tank
20	2914 6171 00		1	Filter element KOMATSU 6128- 81-7051	38	2900 6273 00		1	Cap
						39	2914 6175 00		1	Bracket
						40	2900 6267 00		1	Strap
						41	0147 1249 03		1	Bolt
						42	0147 1323 03		2	Bolt
						49	2914 6181 00		1	Support
						51	2914 6183 00		1	Panel
						56_124_0_0_0					



Engine operating panel
 Motorbedieningspaneel
 Motors kontrollpanel
 Motorsteuertafel
 Tableau, marche du moteur
 Panel de funcionamiento del motor
 Pannello di controllo motore

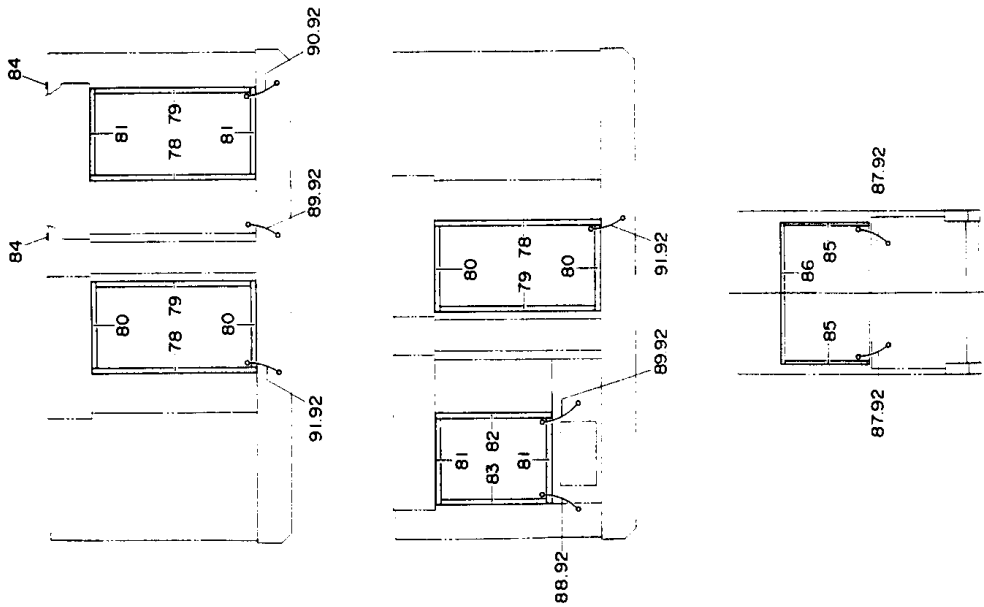
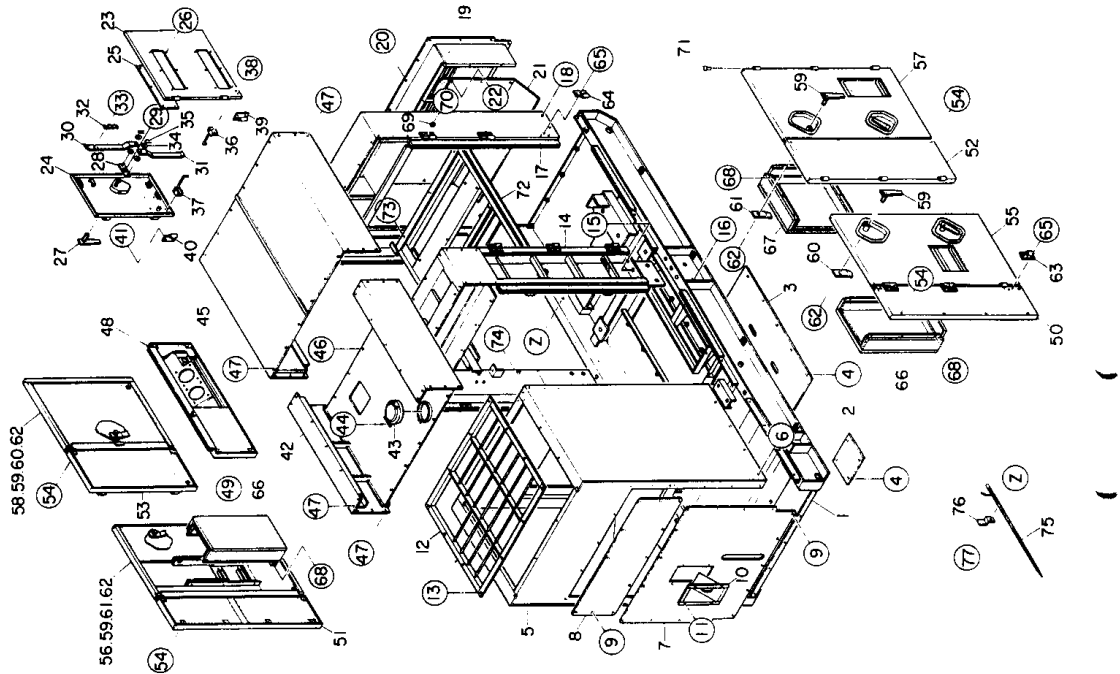
Ref.	A	B	C	D	Designation	Ref.	A	B	C	D	Designation
1	2914 6184 00			1	Fascia panel	25	2900 5362 00			1	Ammeter
2	0147 1247 03			12	Bolt	26	2914 6190 00			1	Temperature gauge
3	2900 5124 00			1	Switch	27	2914 6189 00			1	Unit, oil temperature
5	2900 5181 00			1	Speed regulator	28	2900 5119 00			1	Warning device
6	2914 6185 00			1	Link	35	2900 5127 00			1	Indicator
7	2914 6186 00			1	Bolt	x	2900 6904 00			6	Lamp
10	2914 6817 00			1	Link	36	2914 6193 00			1	Cover
11	2914 6818 00			1	Link	37	0147 1323 03			5	Bolt
12	2900 6142 00			4	Ball joint	38	2914 6194 00			1	Terminal board
13	0266 2110 00			4	Nut	39	2914 6195 00			5	Terminal
15	2900 5123 00			1	Switch	45	2914 6196 00			1	Earth cable
					KOMATSU 600-	46	0147 1323 03			1	Bolt
					815-5390	47	2914 6197 00			2	Cover
x	2912 6001 00			1	Key	48	0147 1323 03			10	Bolt
16	1089 0362 16			1	Push button	49	1089 0494 46			1	Cable box
17	***			1	Knob	50	0147 1207 03			4	Bolt
18	2900 5355 00			1	Light	51	2900 5185 00			2	Grommet
19	2900 5358 00			1	Tachometer	52	2900 5184 00			2	Retainer
20	2900 5360 00			1	Cable	54	2900 5195 00			2	Clamp
21	2900 5364 00			1	Pressure gauge	54.1	2900 6284 00			2	Seal
22	2900 5366 00			1	Unit, oil pressure	56	2900 6285 00			2	Seal
23	2900 5367 00			1	Temperature gauge						
24	2914 6189 00			1	Unit, water temperature						

56_125_0_0_0



Battery connections
 Batterij-aansluitingen
 Batterianslutningar
 Batterieanschlüsse
 Connexions de batterie
 Conexiones de batería
 Collegamenti batteria

Ref.	A	B	C	D	Designation	Ref.	A	B	C	D	Designation
1	2914 6198 00		2	Battery	13	0147 1363 03		4	Bolt
2	2914 6199 00		2	Battery saddle	14	0266 2111 00		4	Nut
3	2914 6200 00		1	Clamp	15	2914 6207 00		1	Shroud
4	2914 6201 00		2	Tie rod	16	2914 6208 00		1	Shroud
5	0296 1110 00		2	Wing nut	17	2914 6209 00		1	Shroud
6	0333 2225 00		2	Spring washer	18	2914 6210 00		1	Shroud
8	2914 6824 00		1	Battery cable	19	2914 6211 00		1	Sensor
9	2914 6825 00		1	Battery cable						
10	2914 6204 00		1	Battery cable	56_126_0_0_0					
11	2914 6205 00		1	Battery cable						
12	2914 6206 00		1	Earth cable						

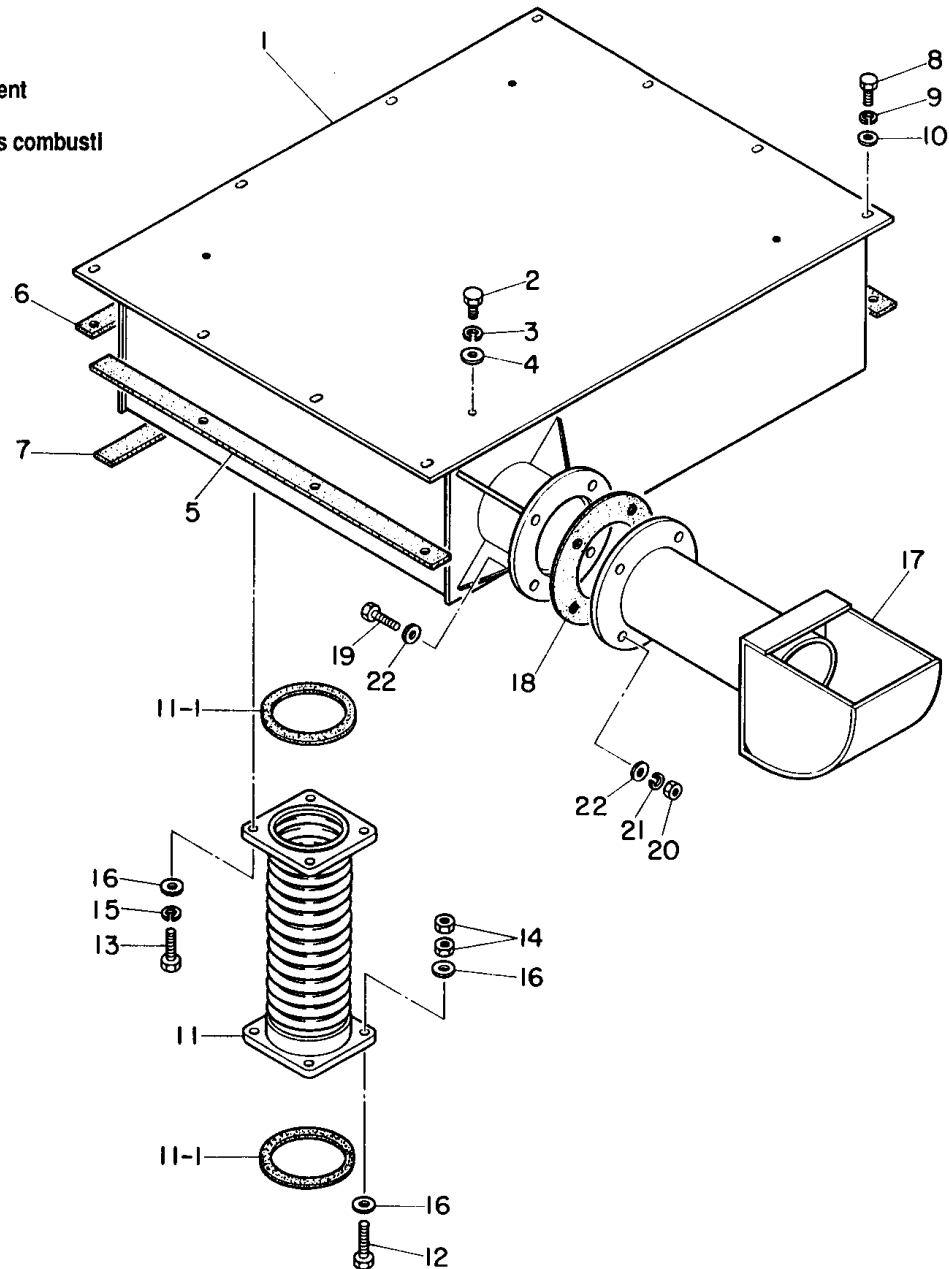


Bodywork
 Karosserie
 Karosseri
 Karosserie
 Capotage
 Carroceria
 Cappottatura

Ref.	A	B	C	D	Designation	Ref.	A	B	C	D	Designation
1	2914 6834 00			1	Frame	48	2914 6857 00			1	Panel
2	2914 6228 00			1	Bottom panel	50	2914 6860 00			1	Panel
3	2914 6229 00			1	Bottom plate	51	2914 6862 00			1	Panel
5	2914 6835 00			1	Panel	52	2914 6864 00			1	Panel
7	2914 6231 00			1	Plate	53	2914 6866 00			1	Panel
8	2914 6232 00			1	Panel	55	2914 6869 00			1	Door
10	2900 6358 00			1	Bracket	56	2914 6871 00			1	Door
12	2914 6839 00			1	Grating	57	2914 6873 00			1	Door
14	2914 6840 00			1	Lifting beam	58	2914 6875 00			1	Door
17	2914 6843 00			1	Panel	59	2900 5187 00			7	Handle
19	2914 6845 00			1	Cover	60	2900 5191 00			3	Latch
21	2914 6237 00			1	Plate	61	2900 5190 00			4	Latch
22	0147 1323 03			12	Bolt	63	2914 6134 00			8	Hinge
23	2914 6847 00			1	Door	64	2914 6135 00			8	Hinge
24	2914 6848 00			1	Door	66	2914 6877 00			2	Air duct
25	2900 5482 00			2	Window	67	2914 6254 00			1	Panel
27	2900 6361 00			1	Handle	68	0147 1323 03			18	Bolt
28	2900 5189 00			1	Link	72	2914 6881 00			1	Support
30	2914 6850 00			1	Latch	73	0147 1363 03			3	Bolt
31	2914 6851 00			1	Latch	75	2914 6403 00			1	Earth pin
32	2900 5175 00			1	Spring	76	2900 6205 00			1	Bracket
33	0160 6039 00			2	Screw	87	2900 6157 00			2	Earth cable
36	2900 6362 00			1	Stay	88	2914 6256 00			1	Earth cable
37	2900 6363 00			1	Stay	89	2900 6751 00			2	Earth cable
39	2914 6122 00			2	Hinge	90	2914 6257 00			1	Earth cable
40	2914 6123 00			2	Hinge	91	2900 6159 00			2	Earth cable
42	2914 6853 00			1	Roof						
43	2900 5402 00			1	Cap						
45	2914 6854 00			1	Roof						

56_129_0_0_0

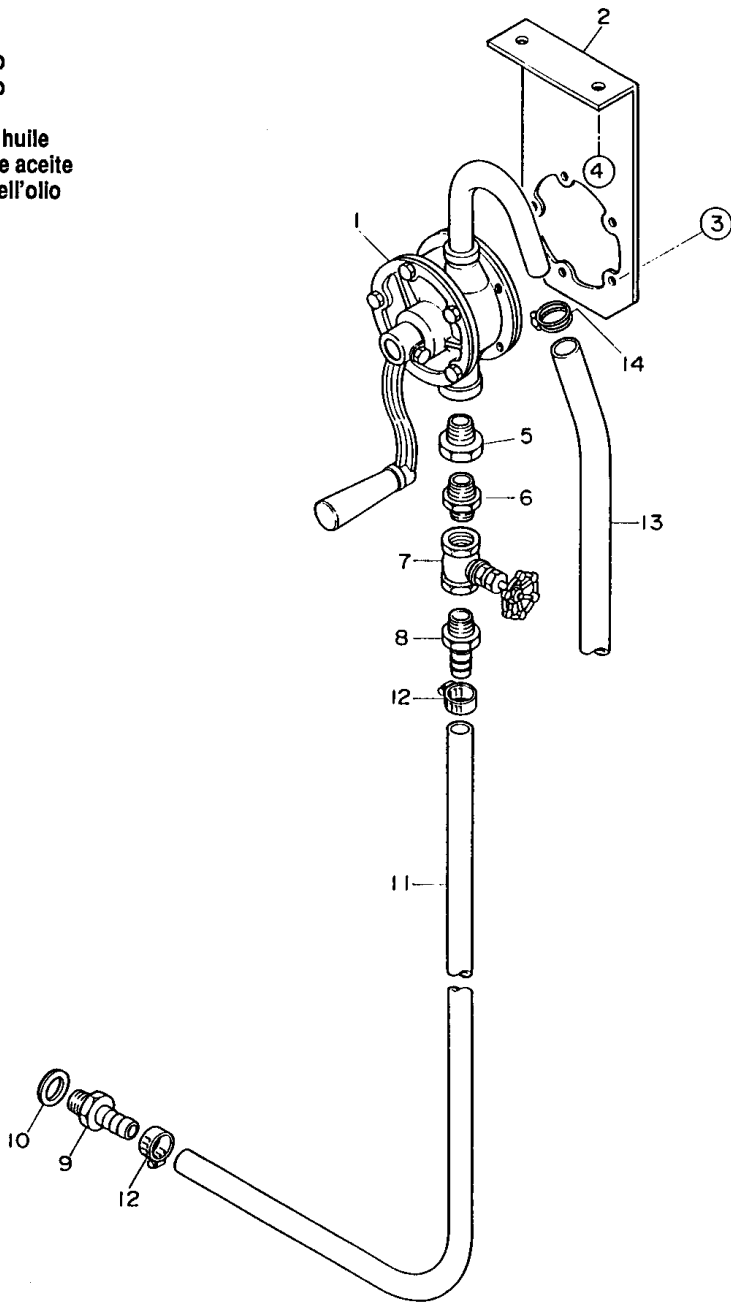
Exhaust
 Uitlaat
 Avgasning
 Auspuff
 Echappement
 Escape
 Scarico gas combusti



Ref.	A	B	C	D	Designation
1	2914 6826 00	1		Muffler
11	2914 6830 00	1		Exhaust pipe
11.1	2914 6217 00	2		Gasket
17	2914 6218 00	1		Pipe

Ref.	A	B	C	D	Designation
18	2914 6219 00	1		Gasket
56_127_0_0_0					

Oil pump
Öllepomp
Oljepump
Ölpumpe
Pompe à huile
Bomba de aceite
Pompa dell'olio



Ref.	A	B	C	D	Designation	Ref.	A	B	C	D	Designation
1	2914 6267 00		1	Oil pump	13	2914 6266 00		1	Hose
2	2914 6889 00		1	Support						
3	0147 1249 03		5	Bolt	56_130_0_0_0					
4	0147 1325 03		2	Bolt						
11	2914 6265 00		1	Hose						

'

'

'

'