

Registration code

Atlas Copco

Collection: ASL 23
Tab: 73
Sequence: 0997

1991-08

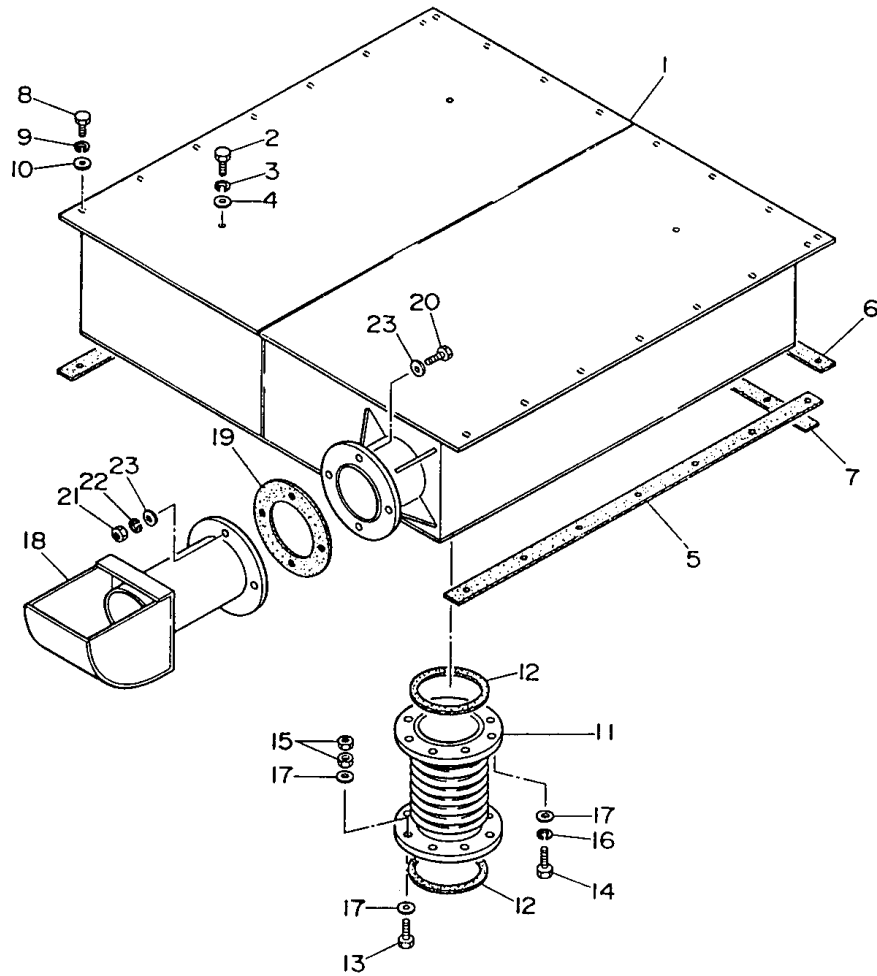
Parts list for generators
Onderdelenlijst voor generatoren
Reservdelstörteckning för generatorer
Teilliste für Generatoren
Liste de pièces pour génératrices
Lista de las partes para generadores
Listino parti di ricambio per generatori

QAS500, -600 Kd

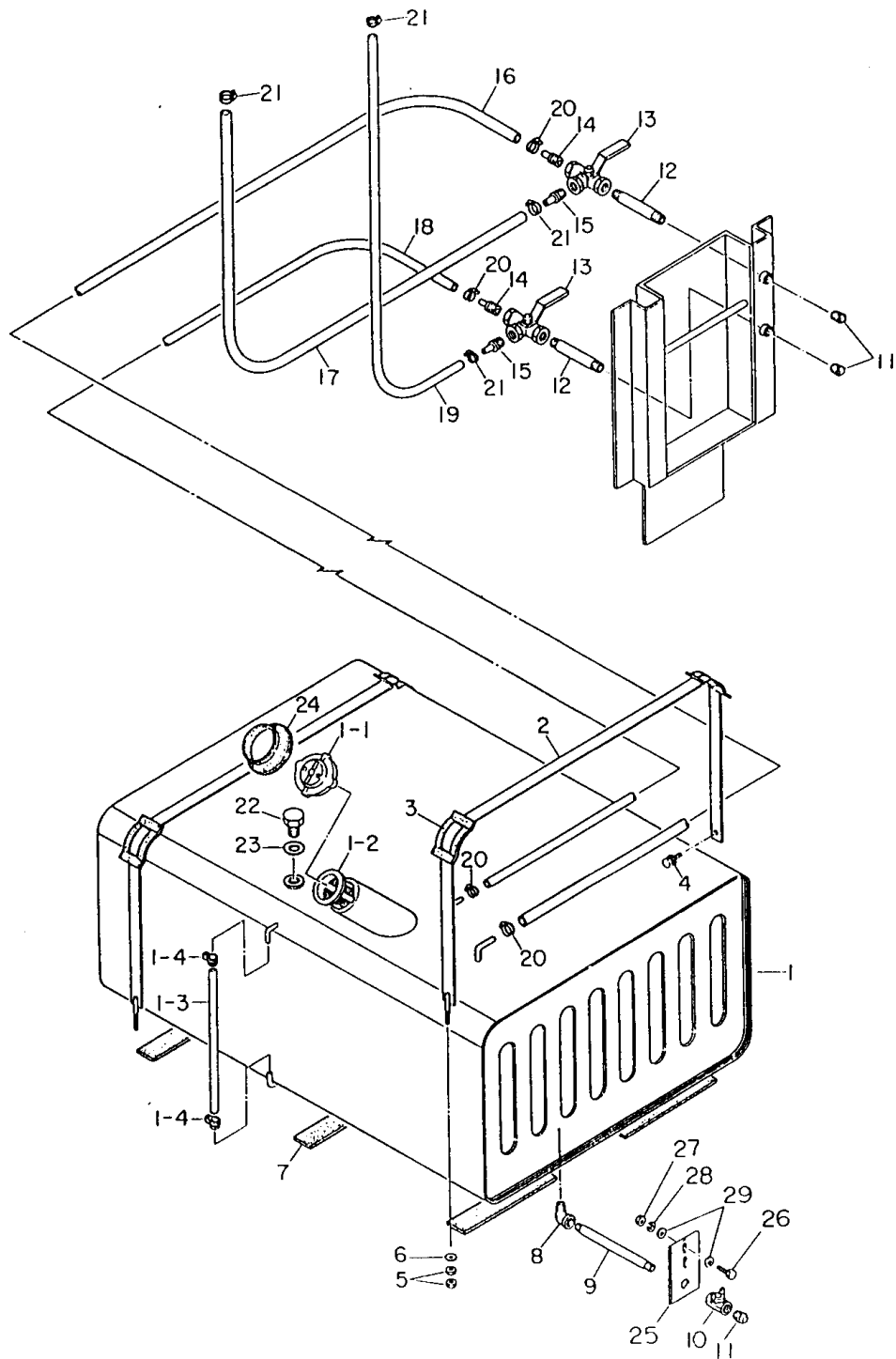
Page	Contents
Blz.	Inhoud
Sida	Innehåll
Seite	Inhaltsverzeichnis
Pag.	Table des matières
Pág.	Indice
Pag.	Indice

3	Exhaust Uitlaat Avgasning Auspuß Echappement Escape Scarico gas combusti	17	Battery connections Batterij-aansluitingen Batterianslutningar Batterieanschlüsse Connexions de batterie Conexiones de batería Collegamenti batteria
5	Fuel tank Brandstoftank Bränsletank Kraftstoffbehälter Réservoir à combustible Tanque de combustible Serbatoio carburante	19	Bodywork Karrosserie Karosseri Karosserie Capotage Carrocería Cappottatura
7	Generator parts Generatoronderdelen Generatordelar Generatorteile Pièces de génératrice Partes del generador Componenti generatore		
9	Control panel Bedieningsbord Manöverpanel Armaturenbrett Panneau de commande Panel de control Pannello comandi e controlli		
11	Engine cooling system Motorkoelsysteem Motorkylsystem Motorkühlsystem Système de refroidissement du moteur Sistema de refrigeración del motor Sistema di raffreddamento motore		
13	Engine operating panel QAS500 Motorbedieningspaneel Motorns kontrollpanel Motorbedienungstafel Tableau, marche du moteur Panel de funcionamiento del motor Pannello di controllo motore		
15	Engine operating panel QAS600 Motorbedieningspaneel Motorns kontrollpanel Motorbedienungstafel Tableau, marche du moteur Panel de funcionamiento del motor Pannello di controllo motore		

Exhaust
 Uitlaat
 Avgasning
 Auspuff
 Echappement
 Escape
 Scarico gas combusti

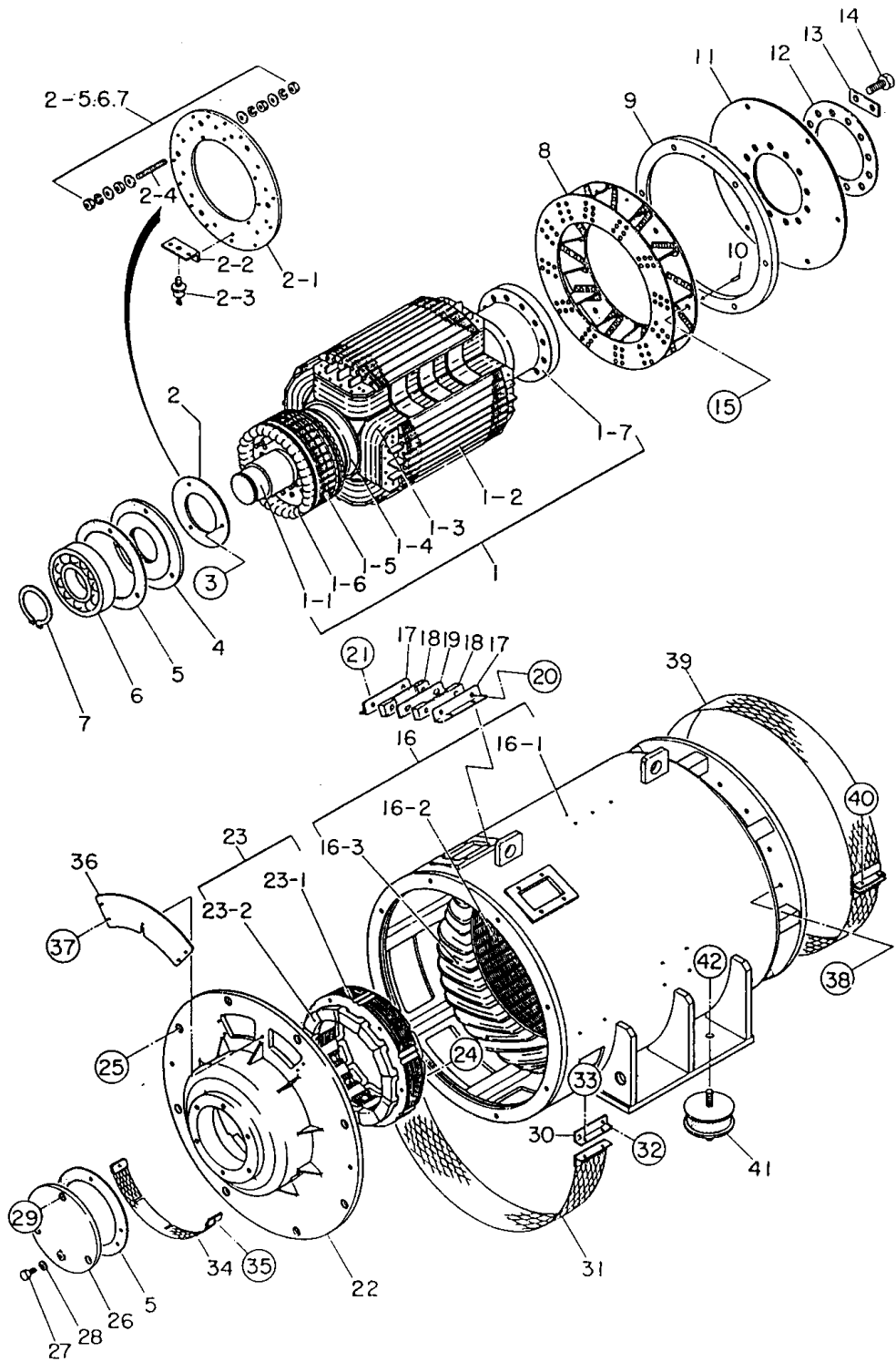


Ref.	A	B	C	D	Designation	Ref.	A	B	C	D	Designation
1	2914 6355 00			1	Muffler	16	0333 2243 00			8	Lock washer
	2914 6424 00				- QAS500	18				1	Pipe
					- QAS600		2914 6361 00				- QAS500
5	2914 6356 00			2	Gasket		2914 6425 00				- QAS600
6	2914 6357 00			1	Gasket	19	2914 6219 00			1	Gasket
7	2914 6358 00			1	Gasket	21	0266 2112 00			4	Nut
11	2914 6359 00			1	Exhaust pipe	22	0333 2236 00			4	Lock washer
12	2914 6360 00			2	Gasket						
14	0147 1478 03			8	Bolt						
15	0266 2114 00			16	Nut						



Fuel tank
 Brandstofftank
 Bränsletank
 Kraftstoffbehälter
 Réservoir à combustible
 Tanque de combustible
 Serbatoio carburante

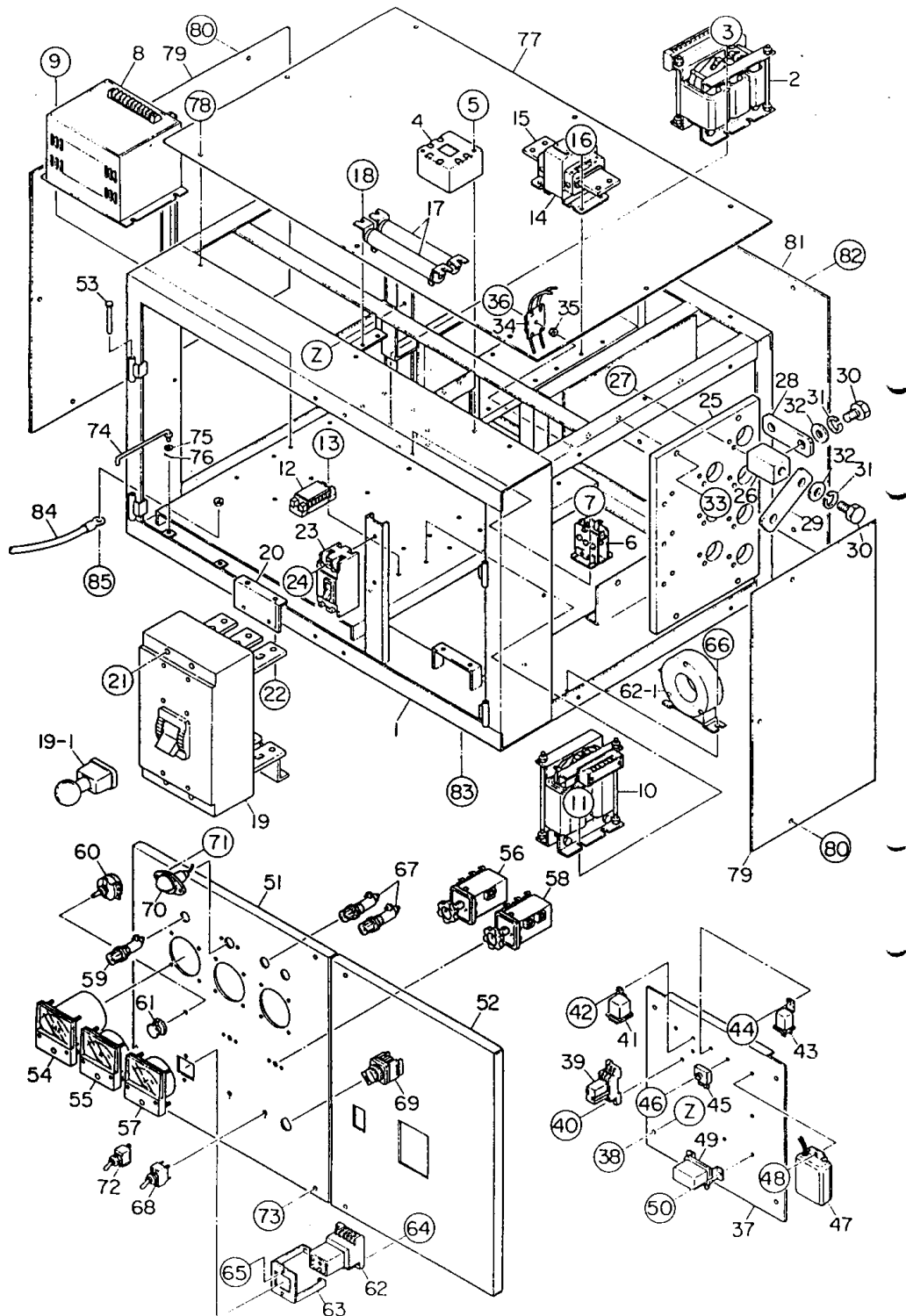
Ref.	A	B	C	D	Designation	Ref.	A	B	C	D	Designation
1	2914 6362 00			1	Fuel tank	7	2914 6426 00			6	Seal
1.1	2914 6434 00	•		1	Cap	24	2900 5193 00			1	Seal
x	2900 6978 00		1)	1	Cap with key	25	2914 6364 00			1	Bracket
x	2912 6004 00			1	Spare key	28	0333 2225 00			2	Lock washer
1.2	2900 5180 00	•		1	Strainer	1) Optional / Als optie / Extra utrustning / Extra Ausstattung / Optionnel / Como opción / Su richiesta					
1.3	2900 6301 00	•		1	Hose	56_120_0_0_0					
2	2914 6363 00			2	Strap						
3	2914 6102 00			4	Pad						
4	0147 1323 03			2	Bolt						
5	0266 2110 00			4	Nut						



Generator parts
 Generatoronderdelen
 Generatordelar
 Generatorteile
 Pièces de génératrice
 Partes del generador
 Componenti generatore

Ref.	A	B	C	D	Designation	Ref.	A	B	C	D	Designation
-	2914 6419 80		1	Generator ass'y	19	2914 6285 00	•	2	Clamp
	2914 6433 80			- QAS500	21	0147 1360 03	•	8	Bolt
				- QAS600	22	2914 6286 00	•	1	Bearing housing
1		•	1	Rotor ass'y	23		•	1	Field ass'y, exciter
	2914 6272 00			- QAS500		2914 6287 00			- QAS500
	2914 6404 00			- QAS600		2914 6407 00			- QAS600
2	2914 6273 00	•	1	Rectifier ass'y	26	2914 6288 00	•	1	Cover
3	0266 2111 00	•	3	Nut	30	2914 6289 00	•	1	Bracket
4	2914 6274 00	•	1	Flange	31	2914 6290 00	•	1	Guard
5	2914 6275 00	•	2	Gasket	33	0147 1254 03	•	2	Bolt
6	2914 6276 00	•	1	Bearing	x	0333 2219 00	•	2	Washer
8	2914 6277 00	•	1	Fan	34	2914 6291 00	•	1	Guard
9	2914 6278 00	•	1	Coupling ring	36	2914 6292 00	•	1	Cover
11	2914 6279 00	•	1	Coupling disk	38	0147 1403 03	•	16	Bolt
12	2914 6280 00	•	1	Flange	39	2914 6293 00	•	1	Fan guard
13	2914 6281 00	•	6	Lock plate	40	0147 1254 03	•	2	Bolt
16		•	1	Stator ass'y	x	0333 2219 00	•	2	Washer
	2914 6282 00			- QAS500	41	2900 6900 00	•	4	Antivibration pad
	2914 6405 00			- QAS600	42	0266 2116 00	•	8	Nut
17	2914 6283 00	•	4	Clamp						
18		•	4	Clamp						
	2914 6284 00			- QAS500						
	2914 6406 00			- QAS600						

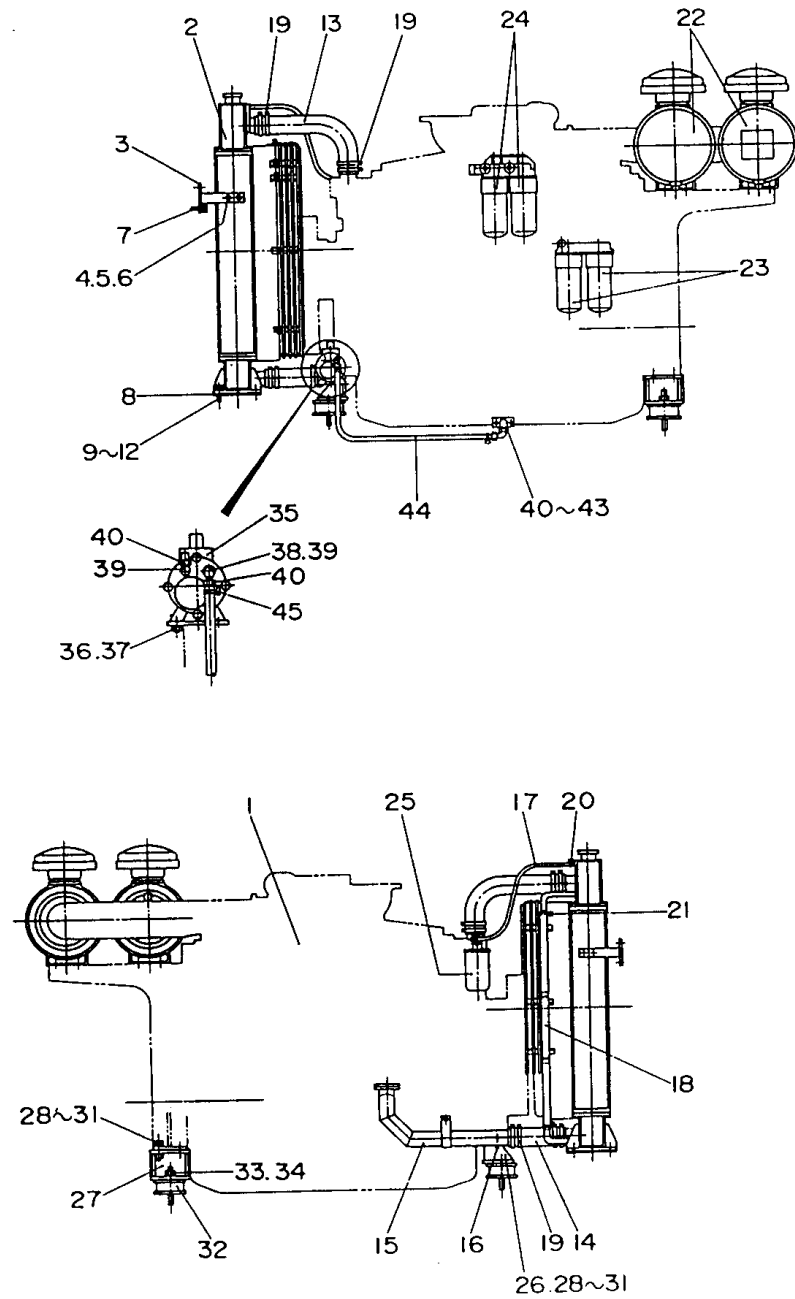
56_114_0_0_0



Control panel
 Bedieningsbord
 Manöverpanel
 Armaturen Brett
 Panneau de commande
 Panel de control
 Pannello comandi e controlli

Ref.	A	B	C	D	Designation	Ref.	A	B	C	D	Designation
1	2914 6294 00			1	Control panel	44	0160 6042 00			1	Screw
2				1	Reactor	45	2900 6239 00			1	Rectifier
	2914 6295 00				- QAS500	46	0160 6063 00			1	Screw
	2914 6408 00				- QAS600	x	0333 2215 00			1	Lock washer
3	0147 1246 03			4	Bolt	47	2900 5372 00			1	Timer
4	2900 5287 00			1	Transformer	48	0147 1247 03			2	Bolt
6	2900 5299 00			1	Rectifier	49	2914 6307 00			1	Relay
8	2914 6409 00			1	Voltage regulator	51	2914 6308 00			1	Control panel
9	0160 6060 00			4	Screw	52	2914 6309 00			1	Control panel
10	2914 6296 00			3	Transformer	53	2900 5153 00			4	Pin
11	0147 1323 03			12	Bolt	54	2914 6310 00			1	Frequency meter
12	2914 6297 00			1	Terminal block	55				1	Ammeter
14				3	Transformer		2914 6311 00				- QAS500
	2914 6298 00				- QAS500		2914 6413 00				- QAS600
	2914 6410 00				- QAS600	56	2900 5089 00			1	Switch
15	2914 6299 00			3	Core	57	2914 6312 00			1	Voltmeter
17	2914 6300 00			2	Resistor	58	2900 5090 00			1	Switch
18	0160 6060 00			4	Screw	59	2900 5095 00			1	Lamp holder
19				1	Circuit breaker	x	2900 5096 00			1	Lamp
	2914 6301 00				- QAS500	60	2900 5302 00			1	Rheostat
	2914 6411 00				- QAS600	61	2900 5303 00			1	Knob
19.1	2914 6156 00			1	Handle	62	2914 6313 00			1	Relay
20	2914 6302 00			2	Bracket	62.1	***			1	Transformer
22	0147 1325 03			4	Bolt	63	2900 6067 00			1	Bracket
23	2914 6052 00			1	Circuit breaker	65	0160 6039 00			2	Screw
24	0160 6054 00			2	Screw	66	0160 6083 00			2	Screw
x	0333 2212 00			2	Spring washer	67	2900 5095 00			2	Lamp holder
25	2914 6303 00			1	Terminal board	x	2900 5096 00			1	Lamp
26	2914 6304 00			6	Terminal	68	2900 5103 00			1	Switch
28	2914 6412 00			6	Terminal plate	69	2900 6248 00			1	Switch
29	2914 6305 00			3	Change plate	70	2900 5016 00			1	Light
33	0147 1365 03			4	Bolt	x	2900 6902 00			1	Lamp
x	0266 2111 00			4	Nut	72	2900 5104 00			1	Switch
x	0333 2230 00			4	Lock washer	74	2900 5200 00			2	Stay
34	2900 5164 00			1	Resistor	77	2914 6315 00			1	Cover
35	0266 2108 00			1	Nut	78	0147 1246 03			8	Bolt
36	0160 6063 00			1	Screw	79	2914 6316 00			2	Panel
x	0266 2107 00			1	Nut	80	0147 1246 03			12	Bolt
x	0333 2215 00			1	Lock washer	81	2914 6317 00			1	Panel
37	2914 6306 00			1	Mounting panel	82	0147 1246 03			8	Bolt
38	0147 1323 03			4	Bolt	83	0147 1363 03			4	Bolt
39	2900 6249 00			1	Relay	84	2900 6116 00			1	Earth cable
x	2900 6250 00			1	Socket	85	0147 1323 03			2	Bolt
x	2900 6472 00			1	Holder						
40	0160 6042 00			2	Screw						
41	2900 6251 00			1	Relay						
43	2900 5373 00			1	Relay						

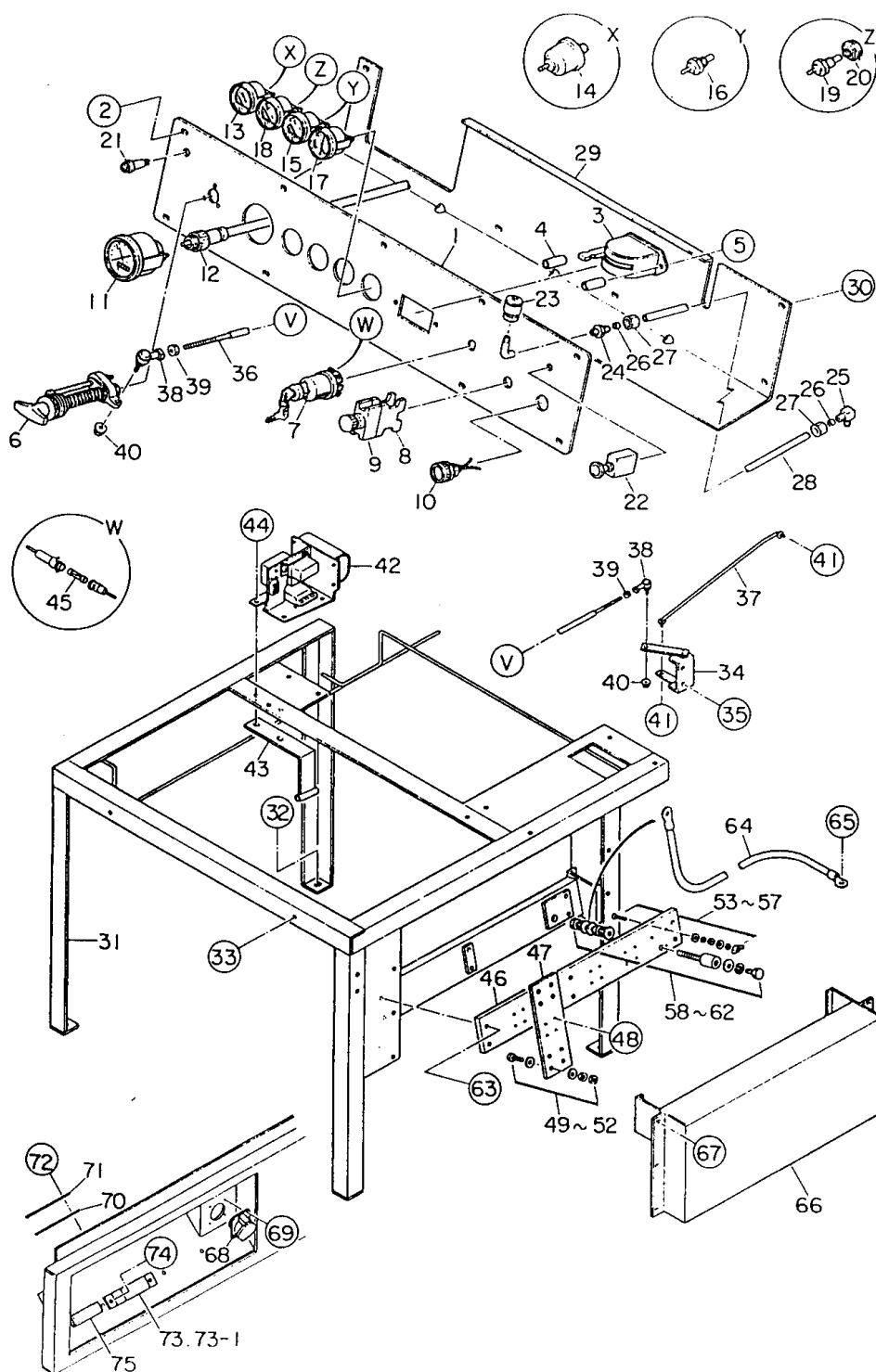
56_115_0_0_0



Engine cooling system
 Motorkoelsysteem
 Motorkylsystem
 Motorkühlsystem
 Système de refroidissement du moteur
 Sistema de refrigeración del motor
 Sistema di raffreddamento motore

Ref.	A	B	C	D	Designation	Ref.	A	B	C	D	Designation
1	2914 6270 00	1		Engine	15	2914 6322 00	1		Hose
				- QAS500						KOMATSU
				KOMATSU						6995-62-1470
	2914 6271 00			SA6D 170-B	16	2914 6323 00	1		Valve
				- QAS600						KOMATSU
				KOMATSU						07730-5004
				SA6D 170-A	17	2900 5112 00	1		Hose
2	2914 6318 00	1		Radiator						KOMATSU
				- QAS500						6128-61-9530
				KOMATSU	18	2914 6324 00	1		Hose
	2914 6414 00			6162-63-9101						KOMATSU
				- QAS600						6128-61-9650
				KOMATSU	22	2900 5344 00	2		Air filter
				6995-62-1521						KOMATSU
3	2914 6319 00	2		Bracket						6711-81-710
	2914 6415 00			- QAS500	x	2900 5346 00	•1		Filter element
	0147 1400 03	4		- QAS600						KOMATSU
4	0333 2236 00	4		Bolt						6125-891-7032
5		4		Lock washer	23	2900 5350 00	2		Oil filter element
8	2914 6165 00	2		Antivibration pad	24	2914 6325 00	2		Fuel filter element
				- QAS500		2914 6418 00			- QAS500
				KOMATSU						- QAS600
	2914 6416 00			6995-61-9230	25	2914 6326 00	1		Corros. resistor
				- QAS600						elem.
				KOMATSU	26	2914 6327 00	1		Support
				6995-62-1350	27	2914 6328 00	2		Support
10	0266 2116 00	4		Nut	29	0266 2115 00	6		Nut
	0266 2115 00	8		- QAS500	30	0333 2145 00	6		Lock washer
				- QAS600	32	2900 6900 00	4		Antivibration pad
13	2914 6320 00	1		Hose	33	0266 2116 00	8		Nut
				- QAS500	35	2914 6329 00	1		Pump
				KOMATSU	41	2900 5168 00	1		Gasket
	2914 6417 00			6995-62-1450	42	2914 6330 00	1		Gasket
				- QAS600						
				KOMATSU						
				6995-62-1690						
14	2914 6321 00	1		Hose						
				KOMATSU						
				175-03-41650						

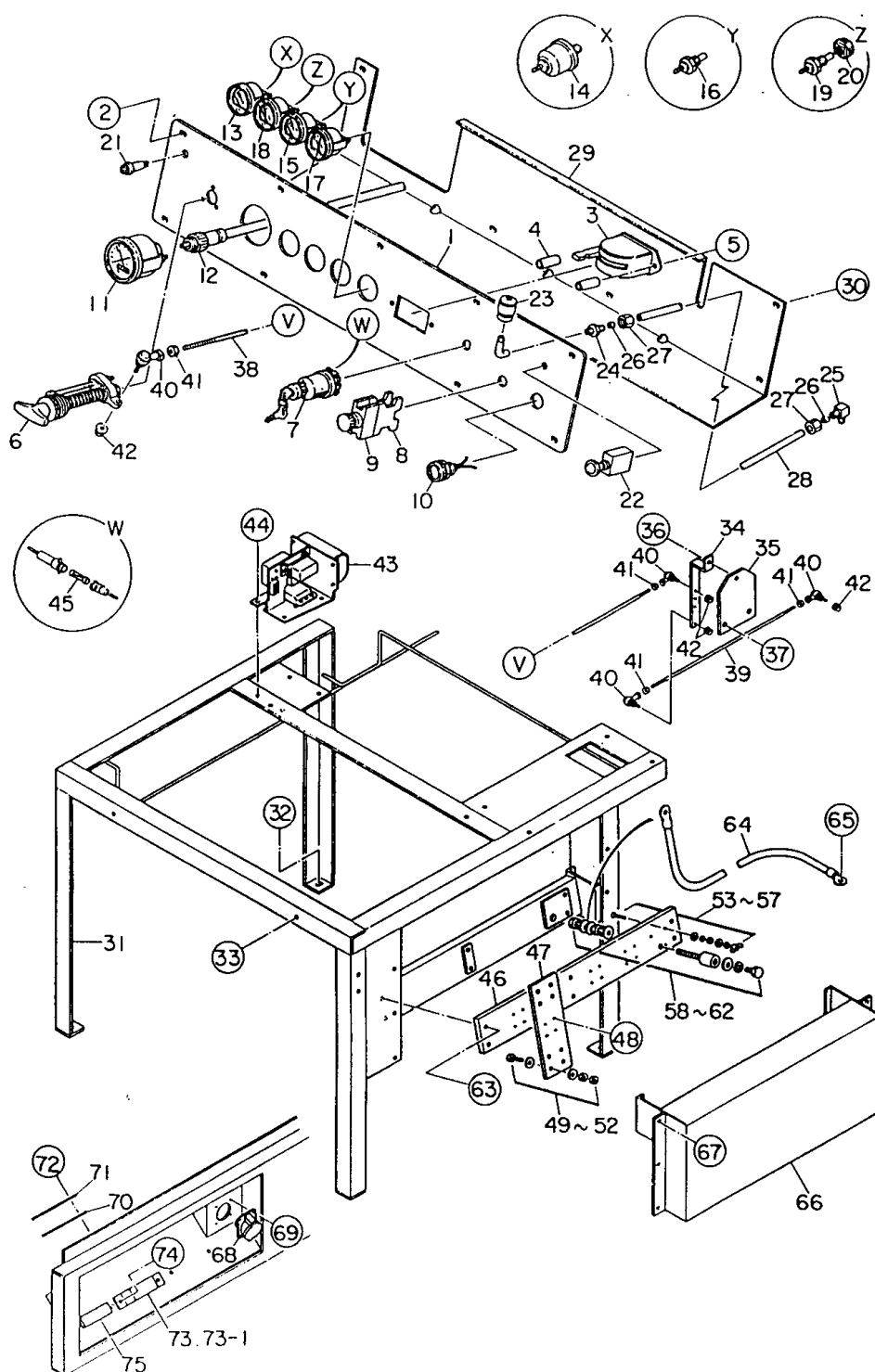
56_116_0_0_0



Engine operating panel QAS500
 Motorbedieningspaneel
 Motors kontrollpanel
 Motorbedienungstafel
 Tableau, marche du moteur
 Panel de funcionamiento del motor
 Pannello di controllo motore

Ref.	A	B	C	D	Designation	Ref.	A	B	C	D	Designation
1	2914 6331 00			1	Fascia panel	x	0333 2236 00			2	Lock washer
2	0147 1247 03			10	Bolt	36	2914 6341 00			1	Link
3	2900 5124 00			1	Switch	37	2914 6342 00			1	Link
6	2900 5181 00			1	Speed regulator	38	2900 6142 00			2	Ball joint
7	2900 5123 00			1	Switch	39	0266 2110 00			2	Nut
x	2912 6001 00			1	Key	42	2914 6343 00			1	Control unit
8	1089 0362 16			1	Push button	43	2914 6344 00			1	Support
9	***	•		1	Knob	45	2914 6345 00			1	Fuse
10	2914 6332 00			1	Light	46	2914 6346 00			1	Terminal board
11	2900 5358 00			1	Tachometer	47	2914 6347 00			4	Terminal plate
12	2914 6333 00			1	Cable	50	0266 2112 00			32	Nut
13	2900 5364 00			1	Pressure gauge	51	0333 2236 00			16	Lock washer
14	2900 5366 00			1	Unit, oil press.	54	0266 2108 00			2	Nut
15	2900 5367 00			1	Temperature gauge	56	0333 2219 00			4	Lock washer
16	2914 6189 00			1	Unit, water temp.	58	2914 6195 00			1	Terminal
17	2900 5362 00			1	Ammeter	64	2914 6196 00			1	Earth cable
18	2914 6190 00			1	Temp. gauge	65	0147 1323 03			1	Bolt
19	2914 6189 00			1	Unit, oil temp.	66	2914 6348 00			1	Cover
20	2914 6334 00			1	Adapter	67	0147 1323 03			6	Bolt
21	2914 6335 00			1	Lampholder	68	1089 0494 46			1	Cable box
x	2914 6336 00	•		1	Lamp	69	0147 1207 03			4	Bolt
22	2914 6337 00			1	Switch	70	2900 5185 00			3	Grommet
23	2900 5119 00			1	Warning device	71	2900 5184 00			3	Retainer
29	2914 6338 00			1	Cover	73	2900 5195 00			3	Clamp
30	0147 1323 03			6	Bolt	73.1	2900 6284 00			3	Seal
31	2914 6339 00			1	Frame	75	2900 6285 00			3	Seal
33	0147 1363 03			2	Bolt						
34	2914 6340 00			1	Link						
35	0147 1400 03			2	Bolt						

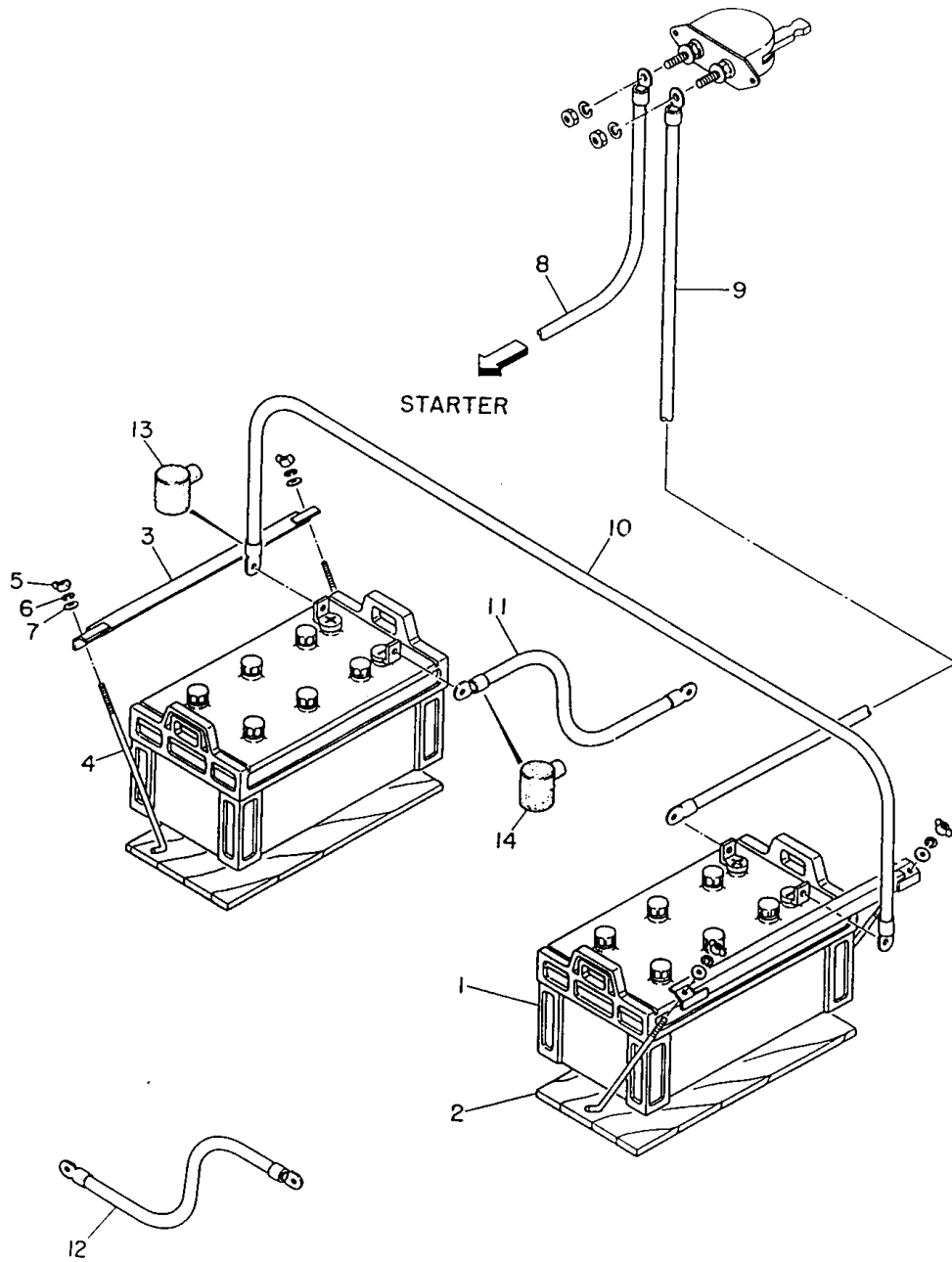
56_117_0_0_0



Engine operating panel QAS600
 Motorbedieningspaneel
 Motors kontrollpanel
 Motorbedienungstafel
 Tableau, marche du moteur
 Panel de funcionamiento del motor
 Pannello di controllo motore

Ref.	A	B	C	D	Designation	Ref.	A	B	C	D	Designation
1	2914 6331 00			1	Fascia panel	35	2914 6421 00			1	Bracket
2	0147 1247 03			10	Bolt	38	2914 6422 00			1	Link
3	2900 5124 00			1	Switch	39	2914 6423 00			1	Link
6	2900 5181 00			1	Speed regulator	40	2900 6142 00			4	Ball joint
7	2900 5123 00			1	Switch	41	0266 2110 00			4	Nut
x	2912 6001 00			1	Key	43	2914 6343 00			1	Control unit
8	1089 0362 16			1	Push button	45	2914 6345 00			1	Fuse
9	***			1	Knob	46	2914 6346 00			1	Terminal board
10	2914 6332 00			1	Light	47	2914 6347 00			4	Terminal plate
11	2900 5358 00			1	Tachometer	50	0266 2112 00			32	Nut
12	2914 6333 00			1	Cable	51	0333 2236 00			16	Lock washer
13	2900 5364 00			1	Pressure gauge	54	0266 2108 00			2	Nut
14	2900 5366 00			1	Unit, oil press.	56	0333 2219 00			4	Lock washer
15	2900 5367 00			1	Temperature gauge	58	2914 6195 00			1	Terminal
16	2914 6189 00			1	Unit, water temp.	64	2914 6196 00			1	Earth cable
17	2900 5362 00			1	Ammeter	65	0147 1323 03			1	Bolt
18	2914 6190 00			1	Temp. gauge	66	2914 6348 00			1	Cover
19	2914 6189 00			1	Unit, oil temp.	67	0147 1323 03			6	Bolt
20	2914 6334 00			1	Adapter	68	1089 0494 46			1	Cable box
21	2914 6335 00			1	Lampholder	69	0147 1207 03			4	Bolt
x	2914 6336 00			1	Lamp	70	2900 5185 00			3	Grommet
22	2914 6337 00			1	Switch	71	2900 5184 00			3	Retainer
23	2900 5119 00			1	Warning device	73	2900 5195 00			3	Clamp
29	2914 6338 00			1	Cover	73.1	2900 6284 00			3	Seal
30	0147 1323 03			6	Bolt	75	2900 6285 00			3	Seal
31	2914 6339 00			1	Frame						
33	0147 1363 03			2	Bolt						
34	2914 6420 00			1	Link						

56_122_0_0_0



Battery connections
 Batterij-aansluitingen
 Batterianslutningar
 Batterieanschlüsse
 Connexions de batterie
 Conexiones de batería
 Collegamenti batteria

Ref.	A	B	C	D	Designation	Ref.	A	B	C	D	Designation
1	2914 6198 00		2	Battery	10	2914 6352 00		1	Battery cable
2	2914 6199 00		2	Battery saddle	11	2914 6353 00		1	Battery cable
3	2914 6349 00		2	Clamp	12	2914 6354 00		1	Earth cable
4	2914 6201 00		4	Tie rod	13	2914 6207 00		2	Shroud
5	0296 1110 00		4	Wing nut	14	2914 6208 00		2	Shroud
6	0333 2225 00		4	Lock washer						
8	2914 6350 00		1	Battery cable	56_118_0_0_0					
9	2914 6351 00		1	Battery cable						

Bodywork
Karosserie
Karosseri
Karosserie
Capotage
Carroceria
Cappottatura

Ref.	A	B	C	D	Designation	Ref.	A	B	C	D	Designation
1				1	Frame	50	2900 5402 00			1	Cap
	2914 6365 00				- QAS500	52	2914 6386 00			1	Roof
	2914 6427 00				- QAS600	55	2914 6387 00			1	Panel
2	2914 6366 00			1	Bottom panel	56	0147 1323 03			12	Bolt
4	2914 6367 00			1	Bottom plate	57	2914 6388 00			1	Duct
5	0147 1323 03			14	Bolt	59	2914 6389 00			1	Panel
6				1	Panel	61				1	Panel
	2914 6368 00				- QAS500		2914 6390 00				- QAS500
	2914 6428 00				- QAS600		2914 6431 00				- QAS600
8	2914 6369 00			1	Plate	62				1	Panel
9	2914 6370 00			1	Panel		2914 6391 00				- QAS500
11	2900 6358 00			1	Bracket		2914 6432 00				- QAS600
13	2914 6371 00			1	Cover	63	2914 6392 00			1	Panel
15				1	Grating	64	2914 6393 00			1	Panel
	2914 6372 00				- QAS500	66	2914 6394 00			1	Air duct
	2914 6429 00				- QAS600	67	2914 6395 00			1	Air duct
17	2914 6373 00			1	Lifting beam	69	0147 1323 03			14	Bolt
20	2914 6374 00			1	Panel	69	2914 6396 00			1	Door
22	2914 6375 00			1	Cover	70	2914 6397 00			1	Door
23	2914 6376 00			1	Duct	71	2914 6398 00			1	Door
25	2914 6377 00			1	Plate	72	2914 6399 00			1	Door
26	0147 1323 03			12	Bolt	73	2914 6400 00			1	Air duct
27	2914 6378 00			1	Plate	74	2914 6401 00			1	Air duct
28	0147 1323 03			4	Bolt	75	2914 6402 00			1	Air duct
29	2914 6379 00			1	Door	76	0147 1323 03			24	Bolt
30	2914 6380 00			1	Door	77	2900 5187 00			8	Handle
31	2914 6381 00			1	Window	78	2900 5190 00			4	Latch
32	2914 6382 00			1	Window	79	2900 5191 00			4	Latch
34	2900 6361 00			1	Handle	81	2914 6134 00			9	Hinge
35	2900 5189 00			1	Link	82	2914 6135 00			9	Hinge
37	2914 6383 00			1	Latch	87	2914 6403 00			1	Earth pin
38	2914 6384 00			1	Latch	97	2900 6159 00			2	Earth cable
39	2900 5175 00			1	Spring	98	2900 6751 00			2	Earth cable
40	0160 6039 00			2	Screw	99	2914 6257 00			1	Earth cable
43	2900 6362 00			1	Stay	100	2914 6256 00			1	Earth cable
44	2900 6363 00			1	Stay	101	2900 6157 00			2	Earth cable
46	2914 6134 00			2	Hinge						
47	2914 6135 00			2	Hinge						
49				1	Roof						
	2914 6385 00				- QAS500						
	2914 6430 00				- QAS600						

56_121_0_0_0

—

—

—

—