

# **Atlas Copco** Generator Trailer

Series 4170 (for QAS 18, 28, 38)

## **Parts list**

1310 3011 66 Ed. 0 2004-03

Trailer part number - 1310036766

In early 2004, we released a new version of the QAS 28-38 trailer. This was a smaller version and is called the N11-4170 Series trailers. Previous models were N11-4100 Series.

Parts manual for this trailer is below. It appears we never printed the axel part number, but I think this is MGS part number 49162, Atlas part number 1310030667.

**“Copyright 2004, Atlas Copco Compressors, Inc. Holyoke, Massachusetts  
Any unauthorized use or copying of the contents or any part of this book is prohibited.  
This applies in particular to trademarks, model denominations, part numbers and  
drawings.”**

No. 1310 3011 66 Ed. 0  
2004-03



## OWNERSHIP DATA

Unit model: \_\_\_\_\_ Owner's machine no.: \_\_\_\_\_

Electric motor type: \_\_\_\_\_ Unit service no.: \_\_\_\_\_

Delivery date: \_\_\_\_\_ Motor serial no.: \_\_\_\_\_

Service plan: \_\_\_\_\_ First start-up date: \_\_\_\_\_

### Selected Lubricants

Compressor: \_\_\_\_\_ Capacity: \_\_\_\_\_

Bearing grease type, electric motor: \_\_\_\_\_

Printed Matter Nos.

Atlas Copco instruction book: \_\_\_\_\_ Atlas Copco logbook: \_\_\_\_\_

Atlas Copco parts list: \_\_\_\_\_ Motor parts list: \_\_\_\_\_

### Local Atlas Copco Representative

Name: \_\_\_\_\_

Address: \_\_\_\_\_

Telephone: \_\_\_\_\_ Contact persons: \_\_\_\_\_ Service: \_\_\_\_\_

Telefax: \_\_\_\_\_ Parts: \_\_\_\_\_

### Example parts list

<u>Ref.</u>	<u>Part number</u>	<u>Qty</u>	<u>Name</u>	<u>Remarks</u>
-------------	--------------------	------------	-------------	----------------

1	1310 0332 64	158	Screw - Round Head	
---	--------------	-----	--------------------	--

2	1310 0326 91	2	Hinge	
---	--------------	---	-------	--

### Explanation of columns:

**Ref.** - Reference number. Relates a part in list and drawing. "x" means that the part is not shown on the drawing. "-" indicates the beginning of a new list item.

**Part number.** "---" directs to consult another list of which the heading mostly has the same designation. "\*\*\*\*" means that the part is not available as spare part. Parts followed by one dot are comprised in the assembly(ies) listed above the first dot.

**Qty** - A number indicating the quantity of parts. The quantity is only related to its corresponding reference number ("Ref") and may differ from the total quantity of this part for the entire unit. For parts of an assembly the quantity mentioned is for one assembly. "AR" means "as required" : bulk material or quantity to be determined.

**Name** - Mostly part names. When machine types, Classification Societies, dimensions, etc. are mentioned under the same "Designation", look carefully for the part number for your specific equipment. When a selection is to be made, the various selections are indented and preceded by a dash.

**Remarks** - A number followed by a bracket, e.g. 1), refers to a footnote.

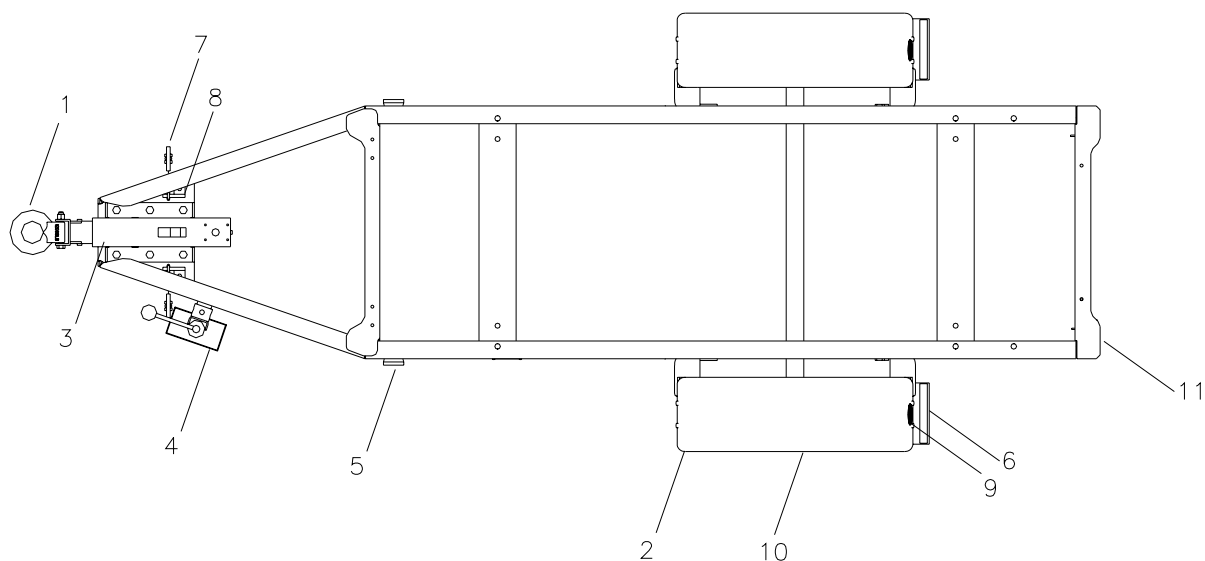
A number in bold, e.g. 1, refers to a "Service Kit". For the "Service Kit" number, see below list. Parts of one "Service Kit" may be spread over several pages.

### ORDERING PARTS

Always quote the part number, "Designation" and quantity of the desired parts as well as type designation and serial number of the unit.

## Table of Contents

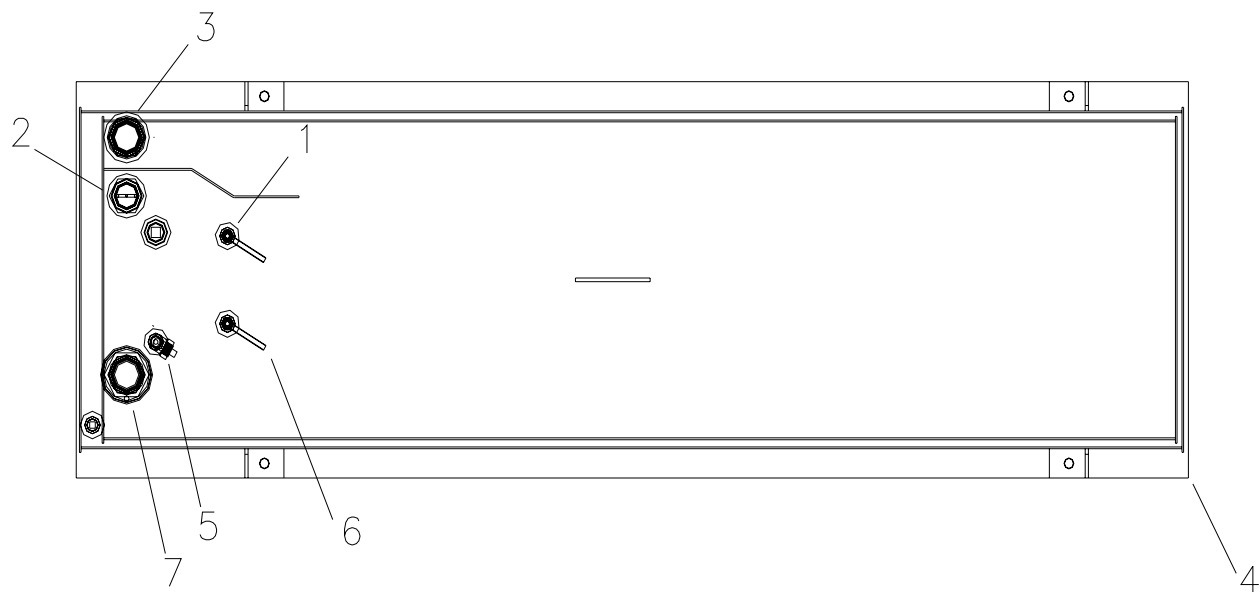
1.	Trailer Assembly .....	4
2.	Fuel Tank Assembly.....	5
3.	Hub And Drum Components .....	6
4	Fuel tank Components.....	7



Axle Assembly - 1310030899 AXEL ASY.:MGS 49312  
**49312- HB** – 3500 LB Underslung Axle – straight.

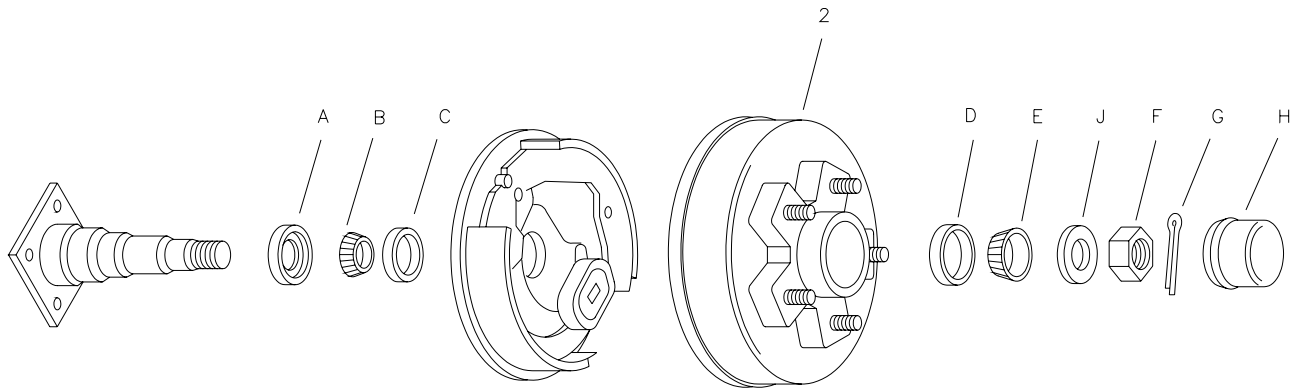
## 1. Trailer Assembly

Ref	Part number	Qty	Name	Remarks	Ref	Part number	Qty	Name	Remarks
1	1310 0346 73	1	3” Towing Eye		13	0268 3210 00	4	Nut, for generating mounting	1
2	1310 0367 19	1	Fender		14	1310 0342 11	1	Ball Coupler, 2”	1,2
3	1310 0345 82	1	Hydraulic Actuator, HB only		15	1310 0366 51	1	Spare tire kit – rear mount	1,2
4	1310 0367 20	1	Jackstand with trunnion		16	1310 0366 52	2	Stabilizer jack kit	1,2
5	1310 0367 21	2	Marker light – yellow		17	1310 0348 43	1	Toolbox kit	1,2
6	1310 0367 22	2	Mudflap						
7	1310 0346 44	2	Safety chain w/clevis hook						
8	1310 0347 24	2	Safety chain anchor		1	Not shown			
9	1310 0367 23	2	Reflector		2	Optional			
10	1310 0367 24	2	Tire & wheel assembly		HB means hydraulic brake version				
11	1310 0367 25	2	Tail light assembly						
12	0144 3440 00	4	Screw, for generator mounting	1					



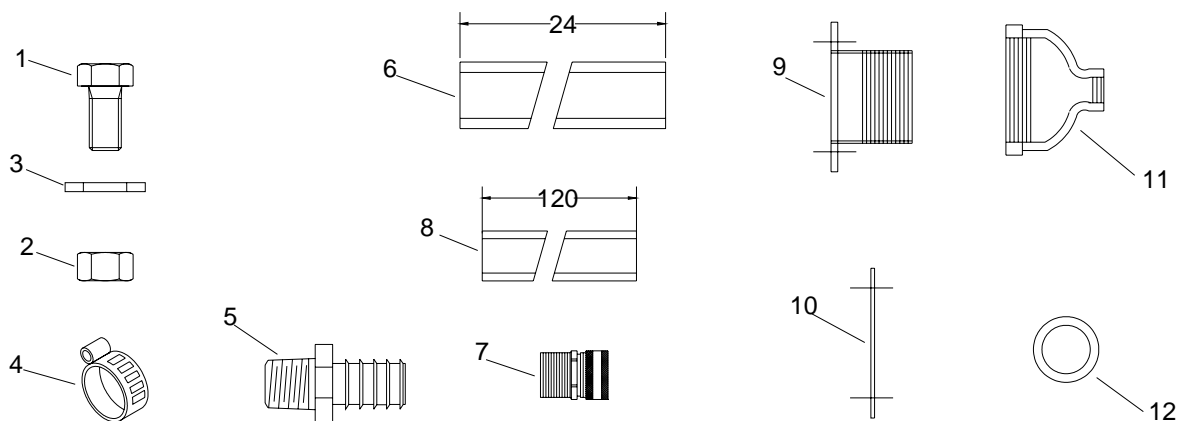
## 2. Fuel Tank Assembly

Ref	Part number	Qty	Name	Remarks	Ref	Part number	Qty	Name	Remarks
1	1310 0346 78	2	Compression Fitting	6	1310 0367 31	2	Tube		
2	1310 0367 27	1	Fuel gauge	7	1310 0367 32	1	Vent pipe assembly		
3	1310 0367 28	1	Fill pipe assembly						
4	1310 0367 29	1	Double wall fuel tank						
-	1310 0367 33	1	Single wall fuel tank						
5	1310 0355 62	1	Elbow						



### 3. Hub And Drum Components

Ref	Part number	Qty	Name	Remarks	Ref	Part number	Qty	Name	Remarks
1	1310 3107 73	1	Bearing Kit including:		H		1	Grease Cap	
A		1	Grease seal		J		1	Spindle Washer	
B		1	Inner Bearing Cone L68149		2	1310 0347 09	1	Hub & Drum Assembly, 1/2" studs	
C		1	Inner Bearing Cup L68111		3	1310 0347 10	1	Idler Hub, 1/2" studs, not shown	1
D		1	Outer Bearing Cup L44610		1	Not shown			
E		1	Outer Bearing Cone L44649						
F		1	Spindle Nut						
G		1	Cotter Pin						



#### 4. Fuel Tank Components

Ref	Part number	Qty	Name	Remarks	Ref	Part number	Qty	Name	Remarks
1	0144 3365 03	4	Screw						
2	0268 3208 00	4	Nut						
3	1310 0464 33	4	Washer						
4	1310 0323 84	2	Hose clamp						
5	1310 0342 61	2	Hose fitting						
6	1310 0364 65	1	Hose						
7	1310 0344 31	1	Connector						
8	1310 0364 61	2	Hose, fuel supply and return						
9	1310 0364 53	1	Connector						
10	1310 0364 54	1	Reducer coupling						
11	1310 0364 55	1	Gasket						
12	1310 0355 73	3	Grommet						