

Atlas Copco Generator Trailer

QAS 38 Military 24V Units

Parts list

1310 3011 61 Ed. 0 2003-10

“Copyright 2003, Atlas Copco Compressors, Inc. Holyoke, Massachusetts
Any unauthorized use or copying of the contents or any part of this book is prohibited.
This applies in particular to trademarks, model denominations, part numbers and
drawings.”

No. 1310 3011 61 Ed. 0
2003-10



OWNERSHIP DATA

Unit model: _____ Owner's machine no.: _____

Electric motor type: _____ Unit service no.: _____

Delivery date: _____ Motor serial no.: _____

Service plan: _____ First start-up date: _____

Selected Lubricants

Compressor: _____ Capacity: _____

Bearing grease type, electric motor: _____

Printed Matter Nos.

Atlas Copco instruction book: _____ Atlas Copco logbook: _____

Atlas Copco parts list: _____ Motor parts list: _____

Local Atlas Copco Representative

Name: _____

Address: _____

Telephone: _____ Contact persons: _____ Service: _____

Telefax: _____ Parts: _____

Example parts list

<u>Ref.</u>	<u>Part number</u>	<u>Qty</u>	<u>Name</u>	<u>Remarks</u>
-------------	--------------------	------------	-------------	----------------

1	1310 0332 64	158	Screw - Round Head	
---	--------------	-----	--------------------	--

2	1310 0326 91	2	Hinge	
---	--------------	---	-------	--

Explanation of columns:

Ref. - Reference number. Relates a part in list and drawing. "x" means that the part is not shown on the drawing. "-" indicates the beginning of a new list item.

Part number. "---" directs to consult another list of which the heading mostly has the same designation. "****" means that the part is not available as spare part. Parts followed by one dot are comprised in the assembly(ies) listed above the first dot.

Qty - A number indicating the quantity of parts. The quantity is only related to its corresponding reference number ("Ref") and may differ from the total quantity of this part for the entire unit. For parts of an assembly the quantity mentioned is for one assembly. "AR" means "as required" : bulk material or quantity to be determined.

Name - Mostly part names. When machine types, Classification Societies, dimensions, etc. are mentioned under the same "Designation", look carefully for the part number for your specific equipment. When a selection is to be made, the various selections are indented and preceded by a dash.

Remarks - A number followed by a bracket, e.g. 1), refers to a footnote.

A number in bold, e.g. 1, refers to a "Service Kit". For the "Service Kit" number, see below list. Parts of one "Service Kit" may be spread over several pages.

ORDERING PARTS

Always quote the part number, "Designation" and quantity of the desired parts as well as type designation and serial number of the unit.

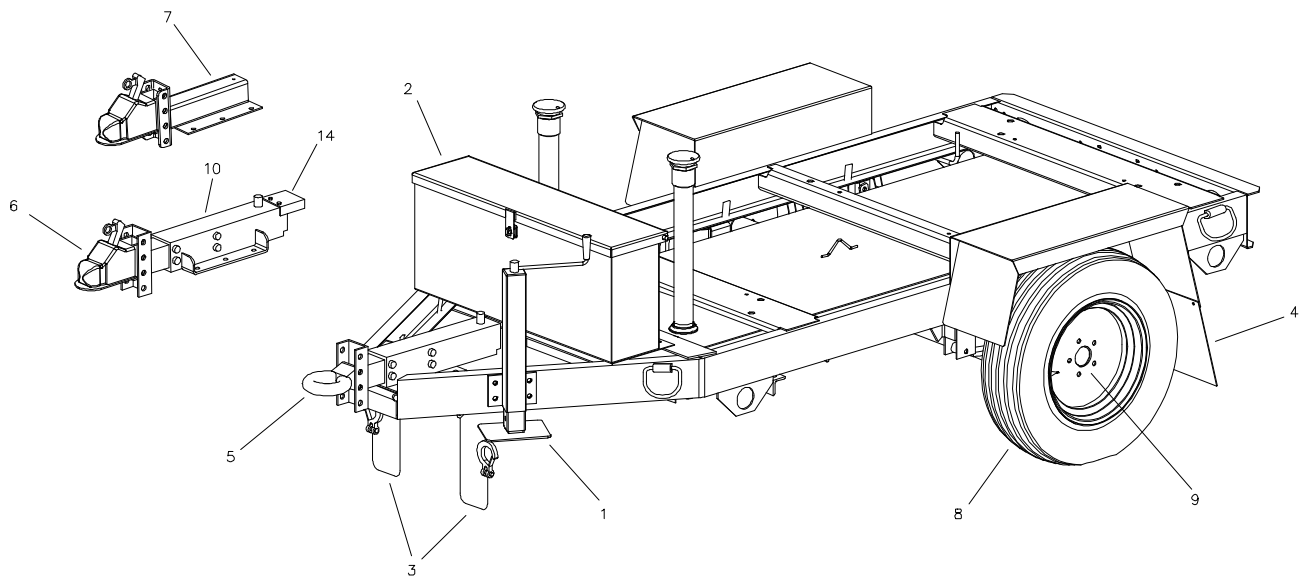
Table of Contents

1. Trailer Assembly4

2. Fuel Tank Assembly.....5

3. Electrical Componets.....6

4. Auxiliary Parts.....7

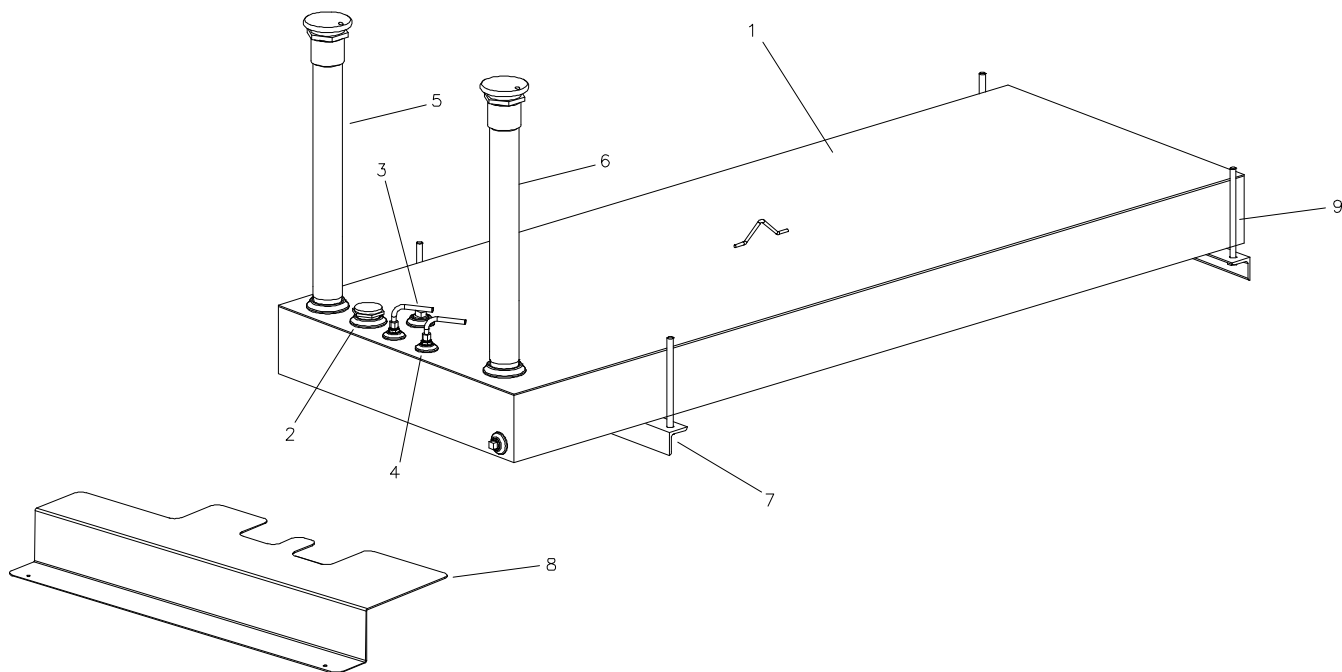


1. Trailer Assembly

Ref	Part number	Qty	Name	Remarks
1	1310 0366 90	1	Tongue Jack	
2	N/A	1	Toolbox	
3	1310 0366 91	2	Safety Chain (1/4")	
4	N/A	2	Atlas Copco Mud Flap	
5	1310 0346 73	1	Towing Eye Kit	
6	N/A	1	Ball Coupler (2" - Gloss Black)	
7	N/A	1	Tow Bar (Idler & EB only)	

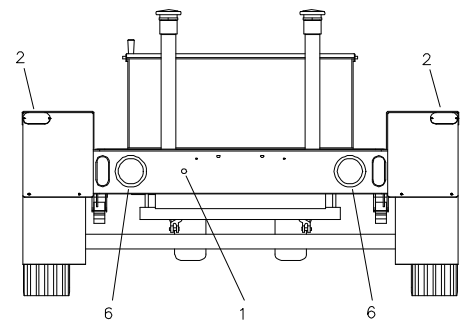
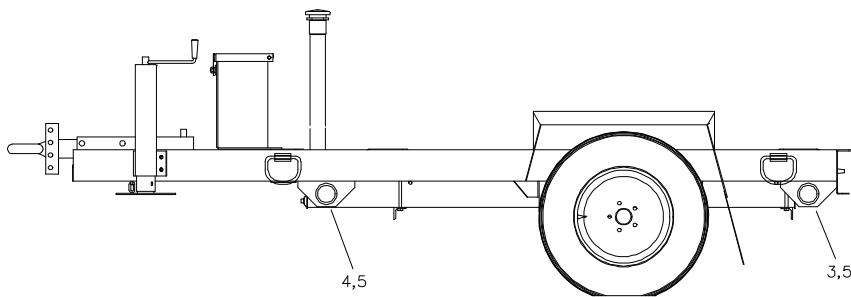
Ref	Part number	Qty	Name	Remarks
8	1310 0366 93	3	Tire & Wheel Assembly-Tan	
				Includes spare tire
9	1310 0345 89	1	Axle Assy., 3500 Lb.	
10	1310 0345 82	1	Hydraulic Actuator	
14	1310 0352 43	1	Shield	

Notes: N/A means that the part is not used in this application.



2. Fuel Tank Assembly

Ref	Part number	Qty	Name	Remarks	Ref	Part number	Qty	Name	Remarks
1	1310 0348 33	1	Tank, 50 Gal., double wall		7	1310 0345 94	2	Hangar Bar	
2	1310 0346 85	1	Fuel gauge		8	1310 0355 35	1	Tank Cover	
3	1310 0346 77	2	Suction and Return Tube		9	1310 0365 70	4	Tank Bolt ½-13 x 8"	
4	1310 0346 78	2	Compression Fitting						
5	1310 0366 89	1	Fill Pipe Assembly						
6	1310 0366 94	1	Vent Pipe Assembly						

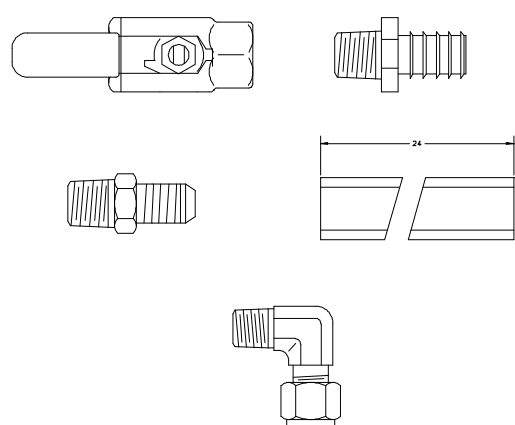
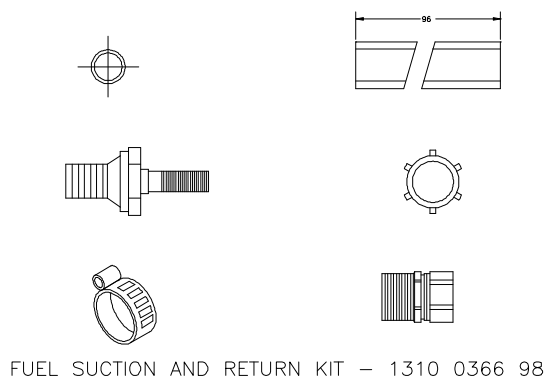


3. Electrical Componets

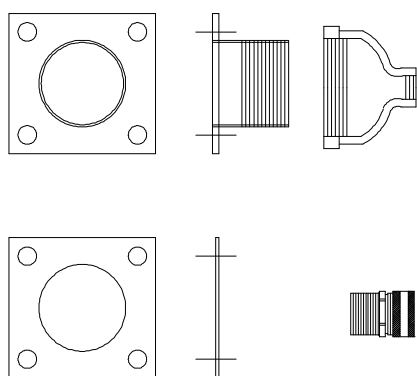
Ref	Part number	Qty	Name	Remarks	Ref	Part number	Qty	Name	Remarks
1	1310 0365 87	1	License Plate Lamp		6	1310 0365 86	2	Tail Light Assembly, sealed	
2	1310 0348 06	2	Reflector, red		7	1310 0365 88	1	Connector, 12 way trailer end	1
3	1310 0365 85	2	Marker Light, red						
4	1310 0365 84	2	Marker Light, yellow						
5	1310 0346 89	4	Marker light Grommet						

4. Auxiliary Components

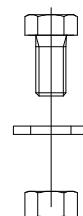
Available by Kit only – Each kit contains the quantity of each part necessary for one complete assembly.



FUEL TANK INTERCONNECTION KIT – 1310 0347 14



FUEL CONNECTION KIT - 1310 0366 99



GENERATOR MOUNTING KIT – 1310 0367 01