

# **Atlas Copco** Generator Trailer

Series 4530 and 4540 (for QAS 58-78)

## **Parts list**

1310 3011 45 Ed. 0 2001-10

**“Copyright 2001, Atlas Copco Compressors, Inc. Holyoke, Massachusetts  
Any unauthorized use or copying of the contents or any part of this book is prohibited.  
This applies in particular to trademarks, model denominations, part numbers and  
drawings.”**

**No. 1310 3011 45 Ed. 0**  
2001-10

***Atlas Copco***

## OWNERSHIP DATA

Unit model: \_\_\_\_\_ Owner's machine no.: \_\_\_\_\_

Electric motor type: \_\_\_\_\_ Unit service no.: \_\_\_\_\_

Delivery date: \_\_\_\_\_ Motor serial no.: \_\_\_\_\_

Service plan: \_\_\_\_\_ First start-up date: \_\_\_\_\_

### Selected Lubricants

Compressor: \_\_\_\_\_ Capacity: \_\_\_\_\_

Bearing grease type, electric motor: \_\_\_\_\_

### Printed Matter Nos.

Atlas Copco instruction book: \_\_\_\_\_ Atlas Copco logbook: \_\_\_\_\_

Atlas Copco parts list: \_\_\_\_\_ Motor parts list: \_\_\_\_\_

### Local Atlas Copco Representative

Name: \_\_\_\_\_

Address: \_\_\_\_\_

Telephone: \_\_\_\_\_ Contact persons: \_\_\_\_\_ Service: \_\_\_\_\_

Telefax: \_\_\_\_\_ Parts: \_\_\_\_\_

### Example parts list

Ref.	Part number	Qty	Name	Remarks
1	1310 0332 64 158		Screw - Round Head	
2	1310 0326 91 2		Hinge	
3	1310 0326 79 2		Fender	

### Explanation of columns:

Ref. - Reference number. Relates a part in list and drawing. "x" means that the part is not shown on the drawing. "-" indicates the beginning of a new list item.

Part number. "---" directs to consult another list of which the heading mostly has the same designation. "\*\*\*\*" means that the part is not available as spare part. Parts followed by one dot are comprised in the assembly(ies) listed above the first dot.

Qty - A number indicating the quantity of parts. The quantity is only related to its corresponding reference number ("Ref") and may differ from the total quantity of this part for the entire unit. For parts of an assembly the quantity mentioned is for one assembly. "AR" means "as required" : bulk material or quantity to be determined.

Name - Mostly part names. When machine types, Classification Societies, dimensions, etc. are mentioned under the same "Designation", look carefully for the part number for your specific equipment. When a selection is to be made, the various selections are indented and preceded by a dash.

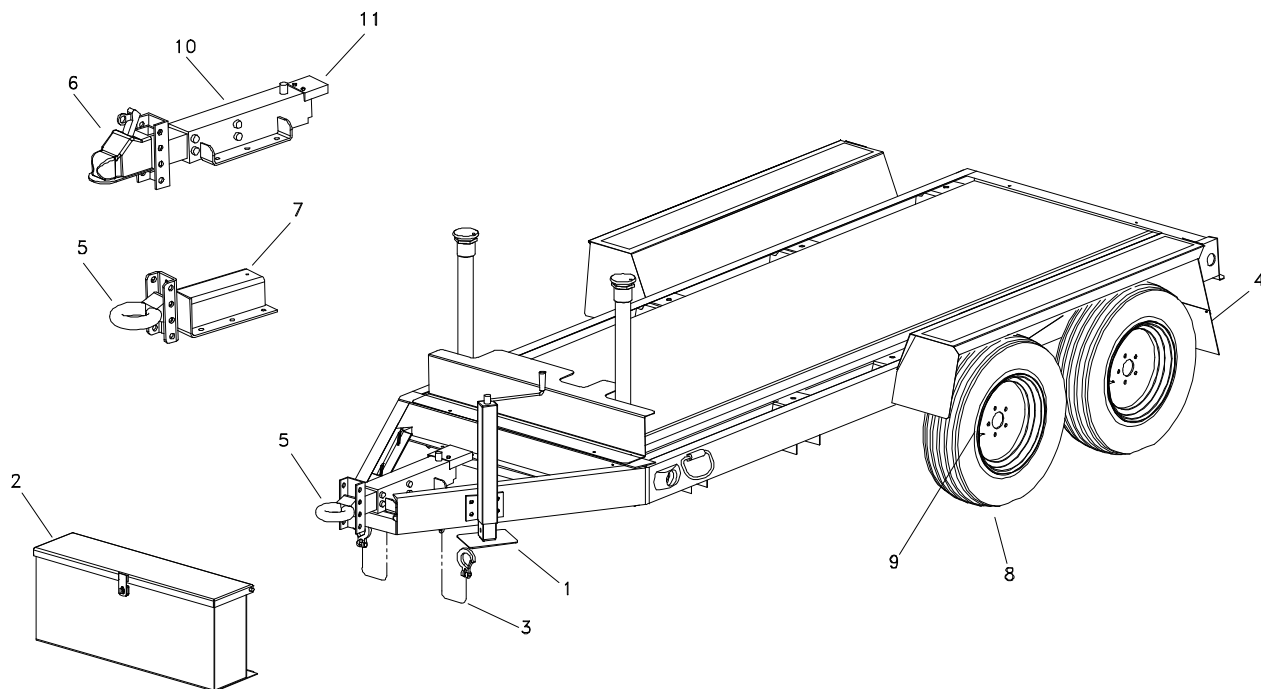
Remarks - A number followed by a bracket, e.g. 1), refers to a footnote.

## ORDERING PARTS

Always quote the part number, "Designation" and quantity of the desired parts as well as type designation and serial number of the unit.

## Table of Contents

<b>1.</b>	<b>Trailer Assembly.....</b>	<b>4</b>
<b>2.</b>	<b>Fuel Tank Assembly.....</b>	<b>5</b>
<b>3.</b>	<b>Hub and Drum Components.....</b>	<b>6</b>
<b>4.</b>	<b>Electrical Components.....</b>	<b>7</b>



## 1. Trailer Assembly

Ref	Part number	Qty	Name	Remarks
-----	-------------	-----	------	---------

1	1310 0347 12	1	Tongue Jack	
2	1310 0348 43	1	Toolbox	3
3	1310 0346 46	2	Safety Chain (5/16")	2
4	1310 0347 65	2	Atlas Copco Mud Flap	
5	1310 0346 73	1	Towing Eye (2-1/2", gloss black)	
6	1310 0333 21	1	Ball Coupler (2-5/16"- gloss black)	
7	1310 0348 44	1	Tow Bar (EB only)	
8	1310 0348 56	4	Tire & Wheel Assembly	
9	---	2	Axle Assy., 3500 Lb., Torflex	
	1310 0362 39		Hydraulic Brake System	
	1310 0362 40		Electric Brake System	
10	1310 0345 82	1	Actuator Kit	
11	1310 0352 43	1	Shield	

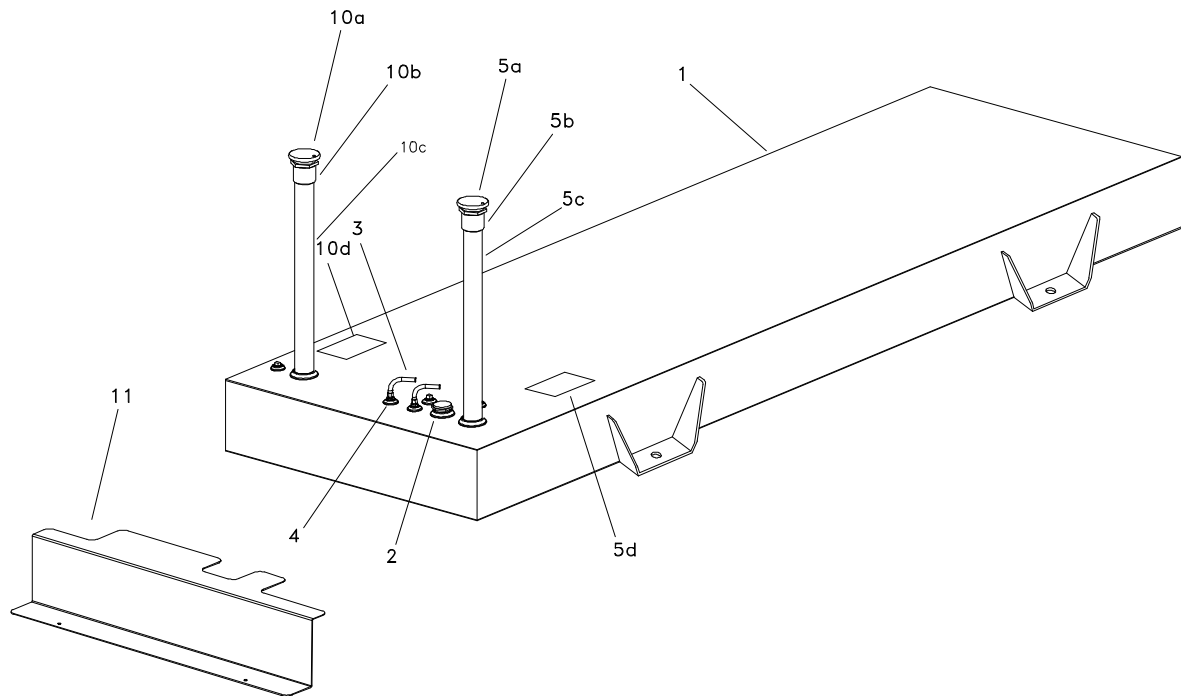
1 Not shown  
 2 Includes hook and safety chain anchor  
 3 Optional

We've updated the parts number so that it will come with the nuts and bolts. Now when you place an order for 1310034582 it will be superseded with:

1310034582 (Qty 1)  
 0144324108 (Qty 6)  
 0292131000 (Qty 6)

Bolts do not come with this - (6) 5/8-11 x 1-1/2  
 Bolts (Part # HCS 07-48) and (6) Nylock nuts  
 (Part # NLN 07)  
 0144324108 - Bolt (6) - MGS- HCS07-01  
 0292131000 - Nut (6) - MGS- HLN07

1310 9043 98 Rev. 00



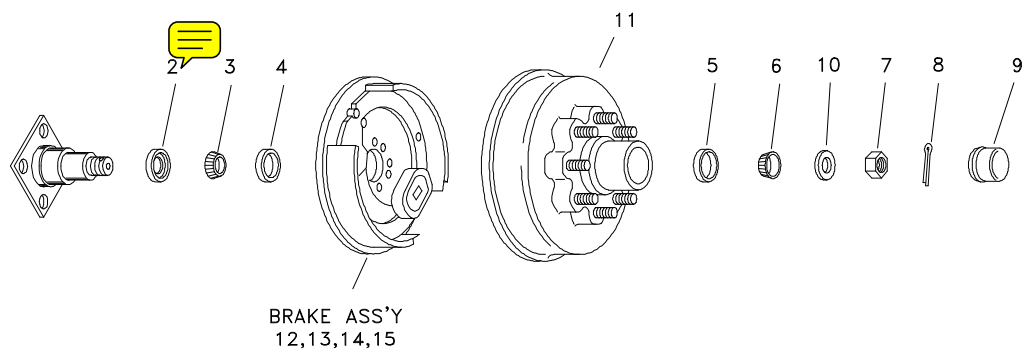
## 2. Fuel Tank Assembly

Ref	Part number	Qty	Name	Remarks					
1	1310 0362 29	1	Tank, 90 Gal, Double Wall		7	1310 0347 14	1	Fuel tank Interconnection Kit	<b>1</b>
2	1310 0346 86	1	Fuel gauge		8	1310 0349 82	1	Fuel Connection Kit	<b>1</b>
3	1310 0346 75	2	Suction and Return Tube		9	1310 0346 27	1	Low Fuel Warning Switch	<b>1</b>
4	1310 0346 74	2	Compression Fitting		10	1310 0347 87	1	Vent Pipe Kit	<b>3</b>
5	1310 0355 31	1	Fill Pipe Kit	<b>3</b>	10a	1310 0346 38	1	Prevent Cap	
5a	1310 0346 38	1	Prevent cap		10b	1310 0346 62	1	Coupling, 2"	
5b	1310 0346 62	1	Coupling, 2"		10c	1310 0356 97	1	Pipe	
5c	1310 0350 88	1	Fill Pipe, 2" x 33"		10d	1310 0346 97	1	Label, Vent Port	
5d	1310 0356 96	1	Label, Fill Port		11	1310 0362 37	1	Cover Plate	
6	1310 0346 22	1	Suction and Return Kit	<b>1</b>					

1 Not shown

2 Optional

3 Including prevent cap, 2" coupling and label



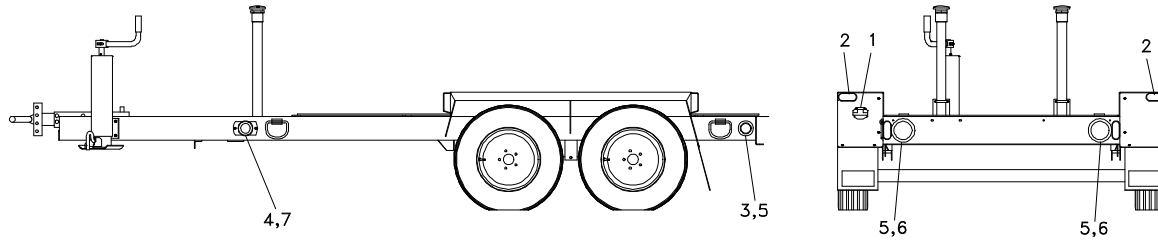
NOTE: HB IS HYDRAULIC BRAKE  
EB IS ELECTRIC BRAKE

### 3. Hub And Drum Components

Ref	Part number	Qty	Name	Remarks
1	1310 3115 98	1	Bearing Kit including: Items 2-10	
2		1	Grease seal	
3		1	Inner Bearing Cone 25580	
4		1	Inner Bearing Cup 25520	
5		1	Outer Bearing Cup 02420	
6		1	Outer Bearing Cone 02975	
7		1	Spindle Nut	
8		1	Cotter Pin	
9		1	Grease Cap	
10		1	Spindle Washer	
11	1310 0350 92	1	Hub & Drum Assembly, (5 Stud hub - 1310 0347 09) Including Item 1	
12	1310 0362 33	1	Brake Assembly LH Electric Brake	
13	1310 0362 34	1	Brake Assembly RH Electric Brake	
14	1310 0362 35	1	Brake Assembly LH Hydraulic Brake	
15	1310 0362 36	1	Brake Assembly RH Hydraulic Brake	

1310 9044 00 Rev. 00

Vehicle electric hook up - 6 pole round female  
on trailer.



## 6. Electrical Components

Ref	Part number	Qty	Name	Remarks
1	1310 0362 24	1	License Plate Lamp	
2	1310 0348 06	4	Reflector, red	
3	1310 0347 42	2	Marker Light, red	
4	1310 0347 43	2	Marker light, yellow	
5	1310 0346 89	2	Marker light, grommet	
6	1310 0347 45	2	Tail Light Assembly, sealed	
7	1310 0362 73	2	Light Bracket	
8	1310 0362 25	1	Wire Harness, Hydraulic Brake	<b>1</b>
-	1310 0350 81	1	Wire Harness, Electric Brake	<b>1</b>
9	1310 0348 30	1	Breakaway Switch, EB Only	<b>1</b>
10	1310 0348 57	1	Emergency Brake Wire, EB Only	

1 Not shown

1310 9044 01 Rev. 00