



Product Information

PRODUCT SERIES: Gas Valves

Integrated Valve Actuator

The Barber-Colman Power Flow is an integrated valve actuator designed for throttling the intake of internal combustion engines. The system is designed to couple to standard market available fuel mixer series and to standard SAE flanged intake manifolds. This integrated throttle body is adaptable to a fuel injected engine for air control.

Standard Features:

- All Electric
- Fast Response
- Small and Compact
- Mounts in any position
- No Mechanical Linkage
- No Mounting Bracket
- Precise Repeatability
- Spring Return to Minimum Fuel

Standard Models:

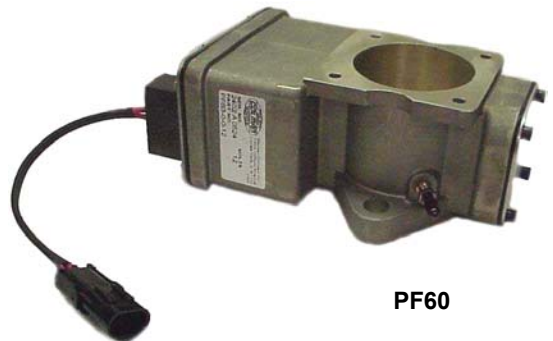
- PF 31
- PF 38
- PF 42
- PF 50
- PF 60

Typical Applications:

- Speed Governing
- Generator Sets
- Forklift Trucks
- Power Carts
- Off-Road Vehicles
- Pump Sets
- Wood Chippers



PF31



PF60

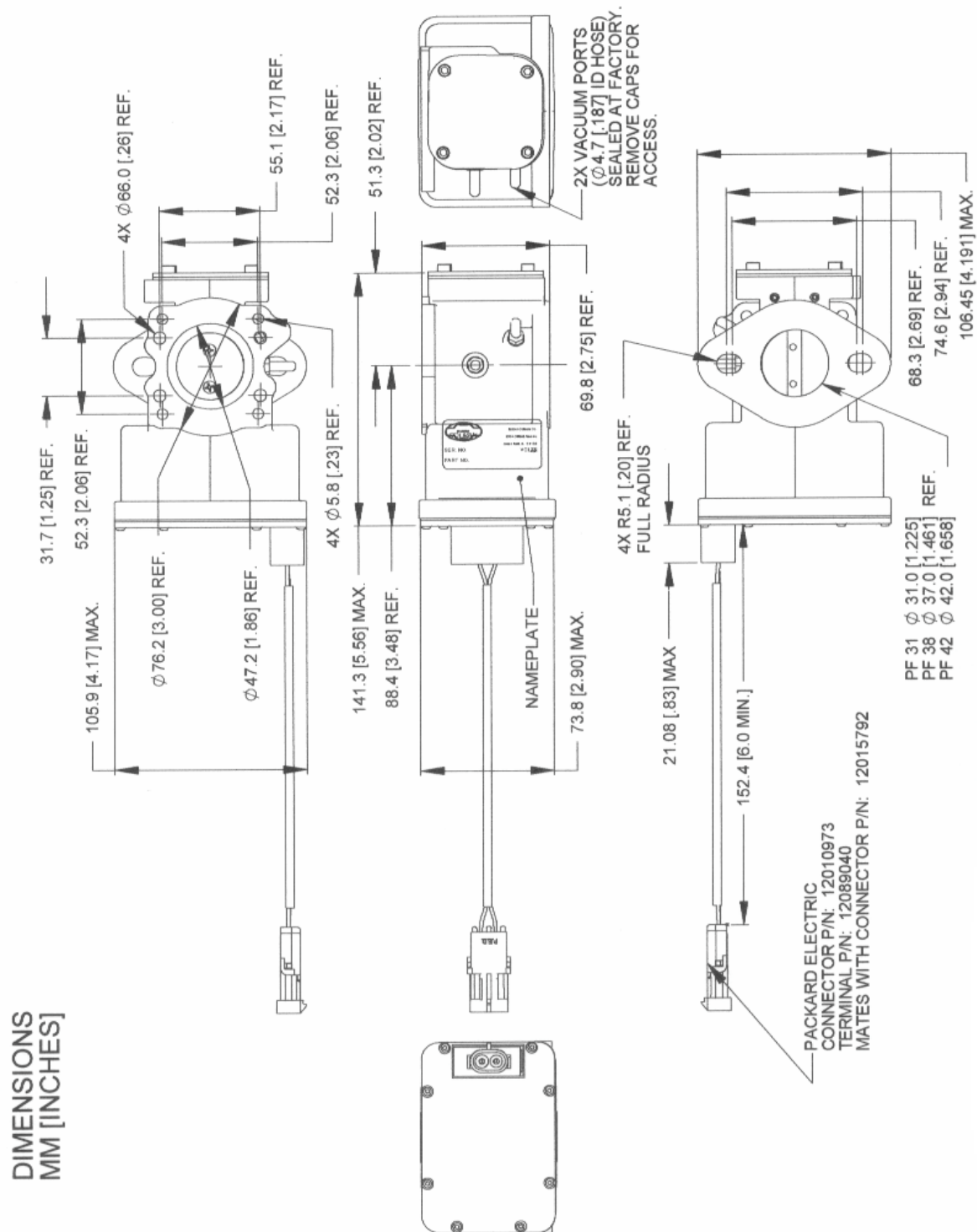
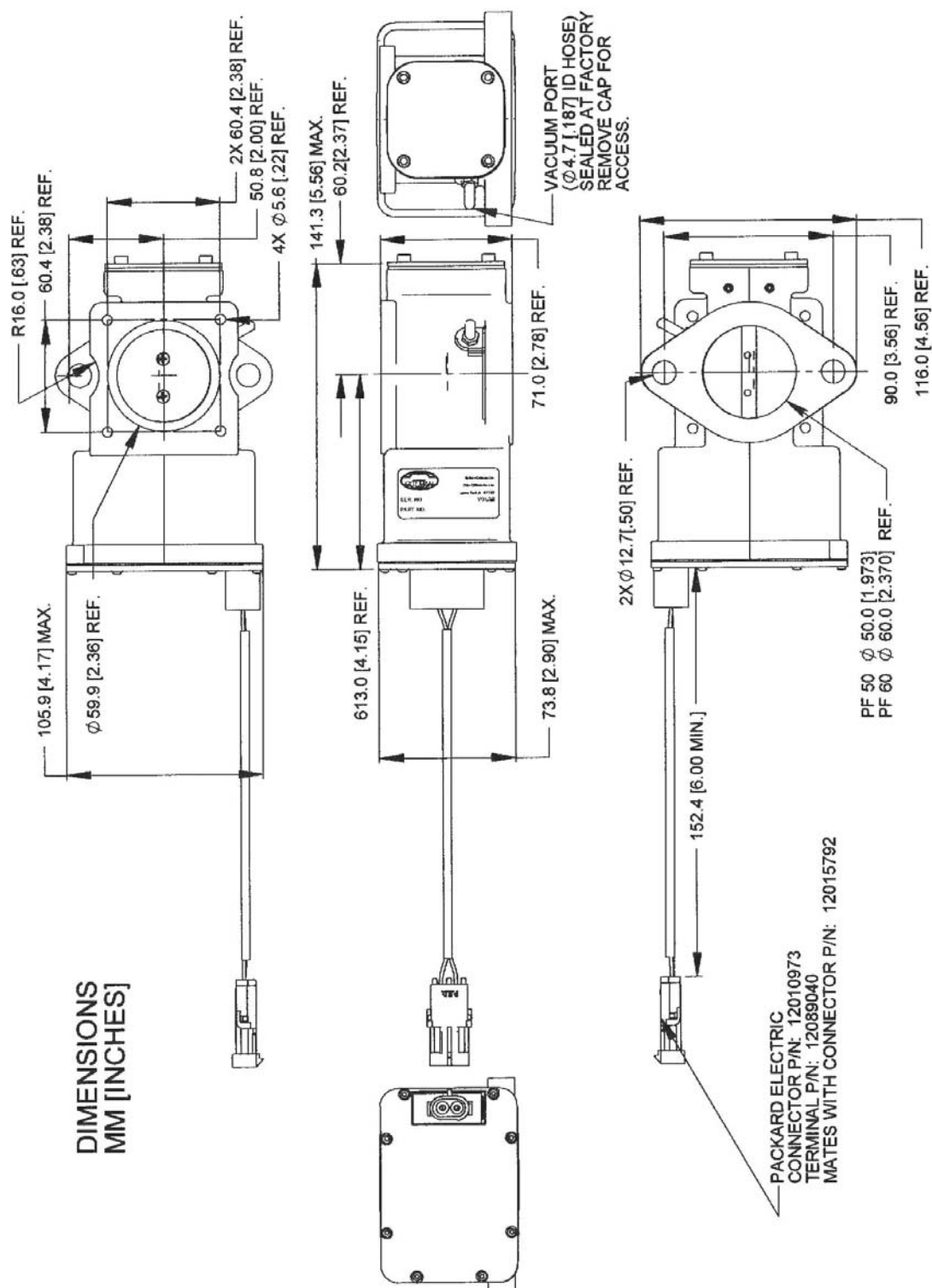
DIAGRAM for PF 31, 38 and 42 Models

DIAGRAM for PF 50 and 60 Models



| Specifications | PF 31 | PF 38 | PF 42 | PF 50 | PF 60 |
|----------------------------------|--|--|--|--|--|
| Operating Voltage | 12 VDC \pm 20% | 12 VDC \pm 20% | 12 VDC \pm 20% | 12 VDC \pm 20% | 12 VDC \pm 20% |
| Rotation | 65 \pm 5° | 65 \pm 5° | 65 \pm 5° | 65 \pm 5° | 65 \pm 5° |
| Air/ Fuel Flow (2" Hg Vacuum) | 125 \pm 10% CFM | 180 \pm 10% CFM | 230 \pm 10% CFM | 330 \pm 10% CFM | 475 \pm 10% CFM |
| Mounting Attitude | Any position | Any position | Any position | Any position | Any position |
| Approximate Weight | 4.2lbs./ 1.9KG | 4.2lbs./ 1.9KG | 4.2lbs./ 1.9KG | 4.5lbs./ 2.0KG | 4.8lbs./ 2.2KG |
| Power Supply Requirements | 32 Watts Max Continuous (125°C Ambient) 72 Watts Max-50% Duty Cycle (125°C Ambient) | 32 Watts Max Continuous (125°C Ambient) 72 Watts Max-50% Duty Cycle (125°C Ambient) | 32 Watts Max Continuous (125°C Ambient) 72 Watts Max-50% Duty Cycle (125°C Ambient) | 32 Watts Max Continuous (125°C Ambient) 72 Watts Max-50% Duty Cycle (125°C Ambient) | 32 Watts Max Continuous (125°C Ambient) 72 Watts Max-50% Duty Cycle (125°C Ambient) |
| Operating Temperature | -40° F to 257°F -40°C to 125°C | -40° F to 257°F -40°C to 125°C | -40° F to 257°F -40°C to 125°C | -40° F to 257°F -40°C to 125°C | -40° F to 257°F -40°C to 125°C |
| Sealing | Unit is oil and dust resistant | Unit is oil and dust resistant | Unit is oil and dust resistant | Unit is oil and dust resistant | Unit is oil and dust resistant |

24Volt D.C. Operation: A 12 Volt valve may be used with a 24 Volt current limiting controller. The controller current must be limited to the 12 Volt power requirement as specified in 12 Volt chart above.

- CAUTION -

As a safety measure, the engine should be equipped with an independent overspeed shutdown device in the event of failure which may render the governor inoperative.

- NOTE -

Barber-Colman believes that all information provided herein is correct and reliable but reserves the right to update at any time. Barber-Colman does not assume any responsibility for its use unless otherwise expressly undertaken.