

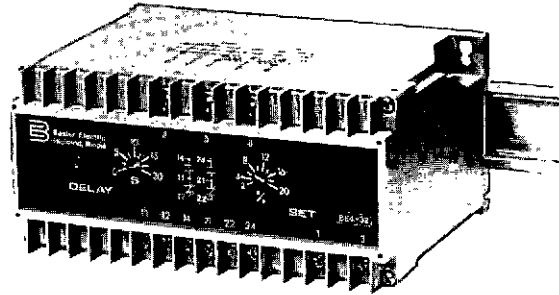
REVERSE POWER RELAY

BE4-32

APPLICATION

The BE4-32 Reverse Power Relay monitors the power flow at the terminals of an ac generator. The relay operates when the real power flow in a given direction exceeds predetermined limits. This protects the machine against motoring due to loss of prime mover torque. A time delay is incorporated to avoid tripping due to transients such as those encountered due to load rejection or during synchronization.

The BE4 Series Relays are back-of-panel mounted. They install in seconds with standard hardware, or snap onto standard DIN rail.



BE4-25
Sync-Check

BE4-27
BE4-59
BE4-27/59
Voltage

BE4-27T
BE4-59T
Voltage with Time
Delay

BE4-32
Reverse Power

BE4-37
BE4-51
BE4-37/51
Current

BE4-47
Phase Sequence

BE4-47N
BE4-47N/27
Phase Balance

BE4-49R
Temperature
(3 RTD)

BE4-49R
Temperature
(6 RTD)

BE4-49T
Thermocouple
Temperature

BE4-74S
Millivolt
Sensing Alarm

BE4-74T
Milliamp
Sensing Alarm

BE4-81U
BE4-81 O
BE4-81 O/U
Frequency

HOW TO ORDER:

Designate the Model Number followed by the complete Style Number:

BE4-32 Style Number

Complete the Style Number by selecting one feature from each column of the Style Identification Chart and entering its designation, letter or number, in the appropriate square.

Note: The description of a complete relay must include both Model Number and Style Number.

For UL and CSA on selected styles, see bulletin UFX.

STYLE IDENTIFICATION CHART

<input type="checkbox"/> 1	<input type="checkbox"/> A	<input type="checkbox"/> 1	<input type="checkbox"/> N	<input type="checkbox"/> 1
SENSING TYPE	NOMINAL INPUT	FREQUENCY	EXT. PWR.	OUTPUT TYPE
1 - Single Phase (Connected L-N)	A - 120V B - 240V	1 - 50/60 Hz 2 - 400 Hz	N - None	1 - Energize to trip
3 - Three Phase (Connected L-L)	*C - 380V *D - 480V **S - Special Voltage			

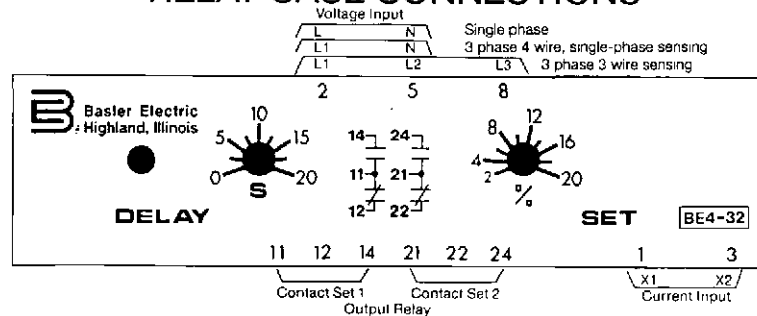
*Not Available in Single Phase

**For other voltage applications, contact the factory.

Example Style Number 1A1N1 has the following characteristics: Single phase (1), 120 volt (A), 50/60 Hertz (1) sensing and will energize the output relay to trip (1).

REVERSE POWER RELAY RELAY CASE CONNECTIONS

BE4-32



Note: Relay contacts are shown in the de-energized state.

SPECIFICATIONS

Input

Single Phase: 120V or 240V
 Three Phase: 120V, 240V, 380V, or 480V
 Voltage Withstand: 1.2 times continuously
 1.5 times for 10 seconds
 Voltage Burden: 3VA maximum
 Current Rating: 5 amperes nominal
 Current Overload: 2 times continuously
 10 times for 3 seconds
 Current Burden: 2VA maximum
 Frequency: 50/60 Hz or 400 Hz

Setpoint

Range: 2-20% of 5 amperes nominal input
 Time Delay: Adjustable 0.4 to 20 seconds
 Repeatability: 0.5%
 Hysteresis: 1%

Output Relay

Type: D.P.D.T.
 Rating: AC-240V, 5 A non-inductive
 Mechanical Life: One million operations

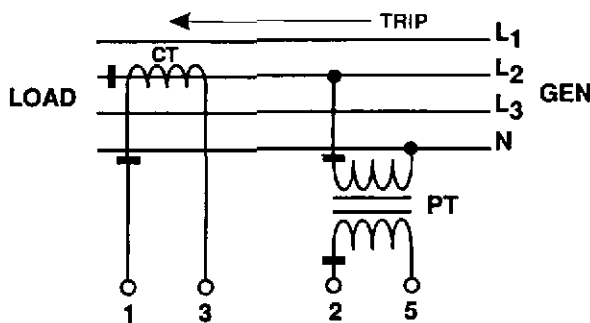
General

Dielectric Test: 2 KV RMS for 1 min. per IEC414
 Surge Withstand: IEEE 472-1974
 Operating Temperature: 0°C to +40°C*
 Case Size: TM6 (See Bulletin UFX for dimensions)
 Storage Temperature: -20°C to +70°C
 Weight: 2.2 lbs. (1 kg)

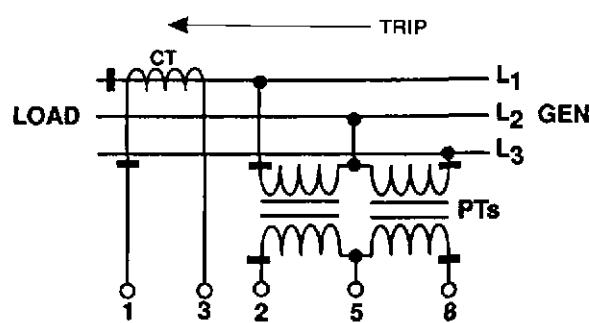
* 0° to +60°C operating temperature is available on standard product without UL and CSA.

THEORY OF OPERATION

The Basler BE4 Series Reverse Power Relay will provide a signal when the power in the tripping direction exceeds a predetermined limit for the desired time delay.



Single Phase Interconnect



Three Phase Interconnect