

APPLICATION

For CE compliance, some excitation systems may require the connection of a line filter to the bridge operating power input.

DECS-250E Systems

Table 1 lists the available line filters based on the rated excitation current of the DECS-250E system.

Table 1. DECS-250E Line Filters

Line Filter Part Number	DECS-250E Rated Excitation Current
9504012100	50 or 100 Adc
9504012101	200 Adc

DECS-400 Systems

For CE compliance, a line filter must be applied to the bridge operating power input of a DECS-400 system rated for less than 75 kVA input. A DECS-400 system with a rated input greater than 75 kVA does not require the application of a line filter for CE compliance.

Table 2 lists the available line filters based on the rated system kVA of the DECS-400 system.

Table 2. DECS-400 Line Filters

Line Filter Part Number	DECS-400 Rated System kVA	Rated Current RMS
9504012100	22.72 kVA	82 Aac
9504012100	45.45 kVA	82 Aac
9504012101	45.45 kVA	164 Aac
9504012102	61 kVA	220 Aac

For DECS-400 systems less than 75 kVA not listed in Table 2, contact Basler Electric for proper line filter selection.

INSTALLATION

Mount and store line filters in a location where the ambient temperature remains within -13 to 212°F (-25 to 100°C).

Mounting and Dimensions

Line filter mounting dimensions are illustrated as follows:

- P/N 9504012100: Figure 1
- P/N 9504012101: Figure 2
- P/N 9504012102: Figure 3

Dimensions are in inches (millimeters).

Line filter chassis weight for all models is 6.1 kg (13.4 lb).

Mounting Hardware

Line filters 9504012100 and 9504012101 are mounted using four, ¼-20 screws. Recommended torque range for mounting hardware is 55 to 65 in-lbs (6.2 to 7.3 N•m).

Line filter 9504012102 is mounted using four M10 (3/8 in. diameter) screws. Recommended torque range for mounting hardware is 180 to 212 in-lbs (20.3 to 24.0 N•m).

CONNECTIONS

Figure 4 illustrates the typical application connections for all line filter models.

Line filter 9504012100 screw terminals (L1, L2, and L3) accept AWG1/0 size wire with a recommended torque range of 62 to 71 in-lb (7 to 8 N•m).

Line filter 9504012101 screw terminals (L1, L2, and L3) accept AWG4/0 size wire with a recommended torque range of 150 to 177 in-lb (17 to 20 N•m).

Line filter 9504012102 connections consist of bus bars with 5/16 in. (9 mm) dia. holes. Ensure that wiring is adequately rated for the application.

The ground terminal (PE) on all models is a size M10 (3/8 in. diameter) stud.

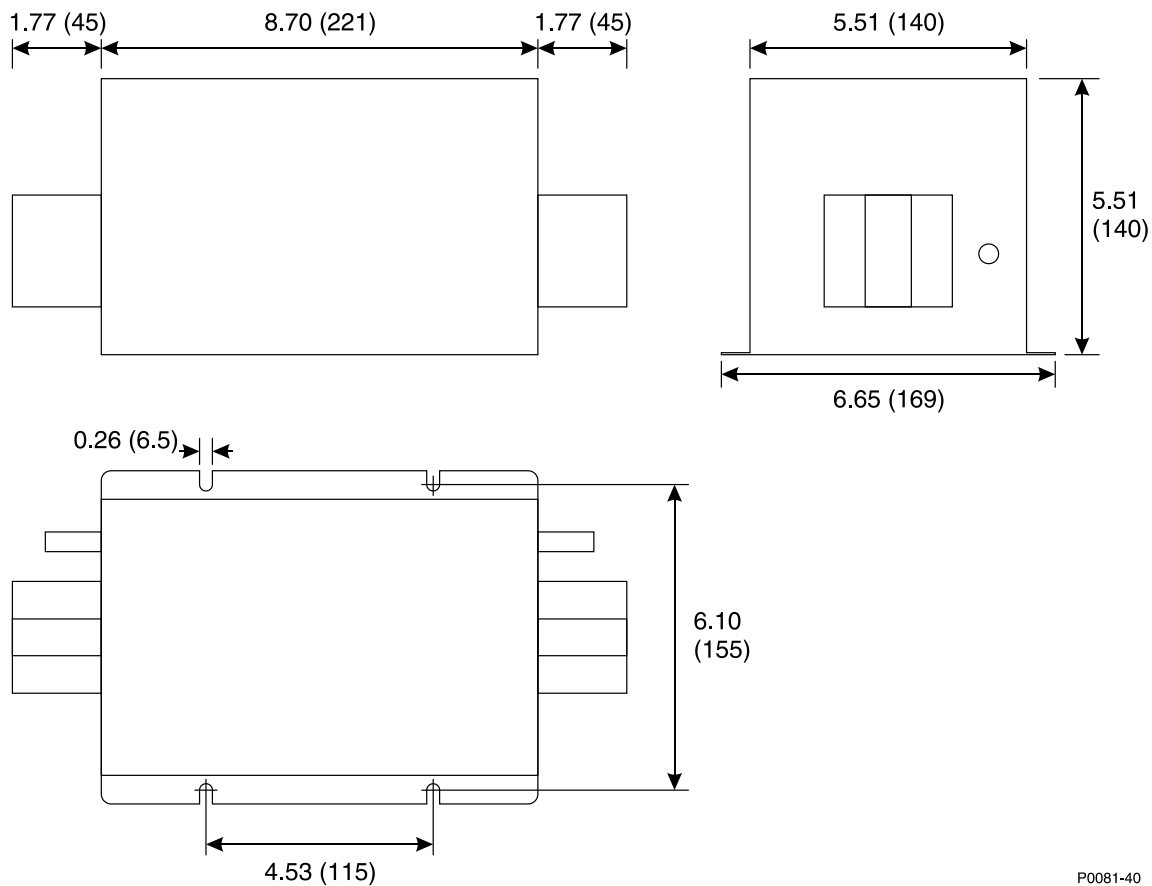


Figure 1. Overall Dimensions for Model 9504012100

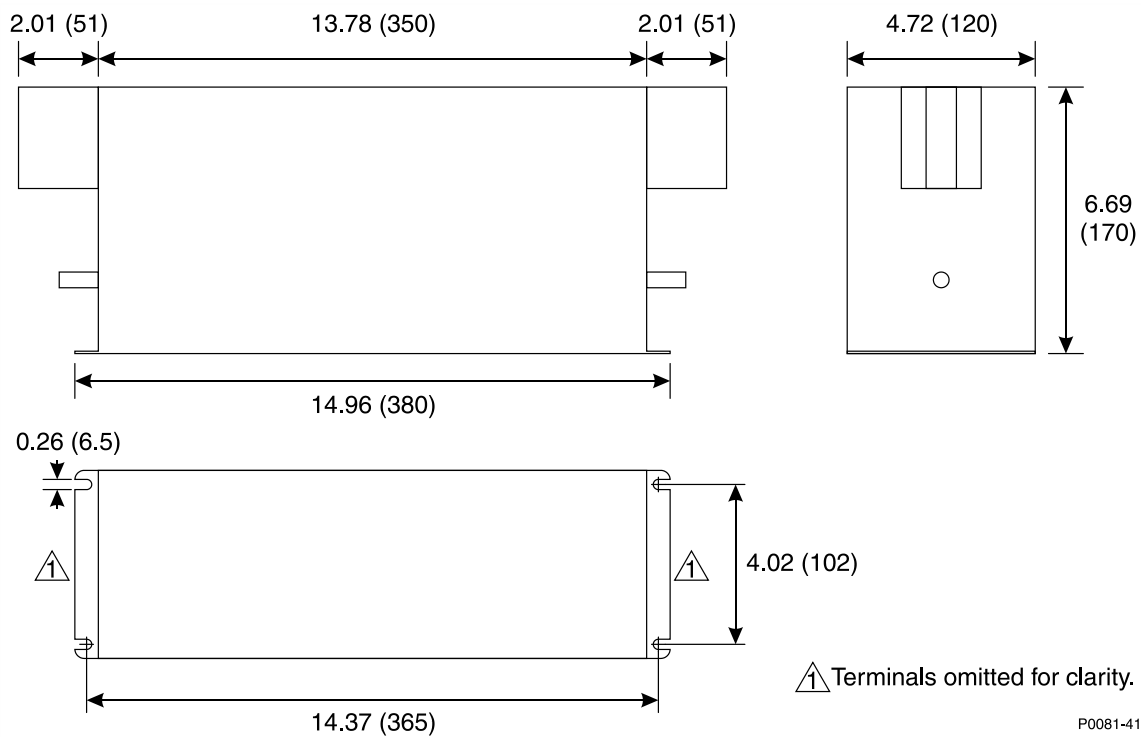
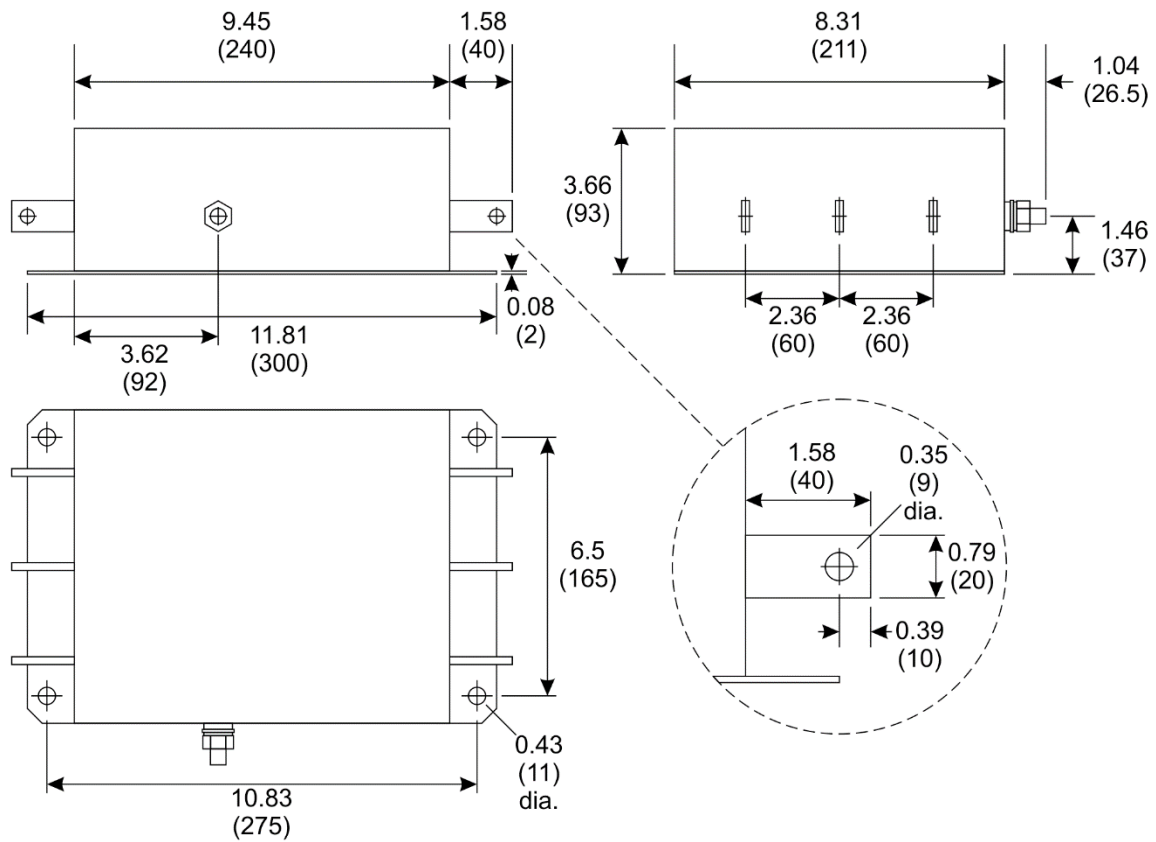


Figure 2. Overall Dimensions for Model 9504012101

Publication 9504000994	Revision A	Instructions	Date 03/19	Page 2 of 4
----------------------------------	----------------------	---------------------	----------------------	-----------------------

For terms of service relating to this product and software, see the *Commercial Terms of Products and Services* document available at www.basler.com/terms.

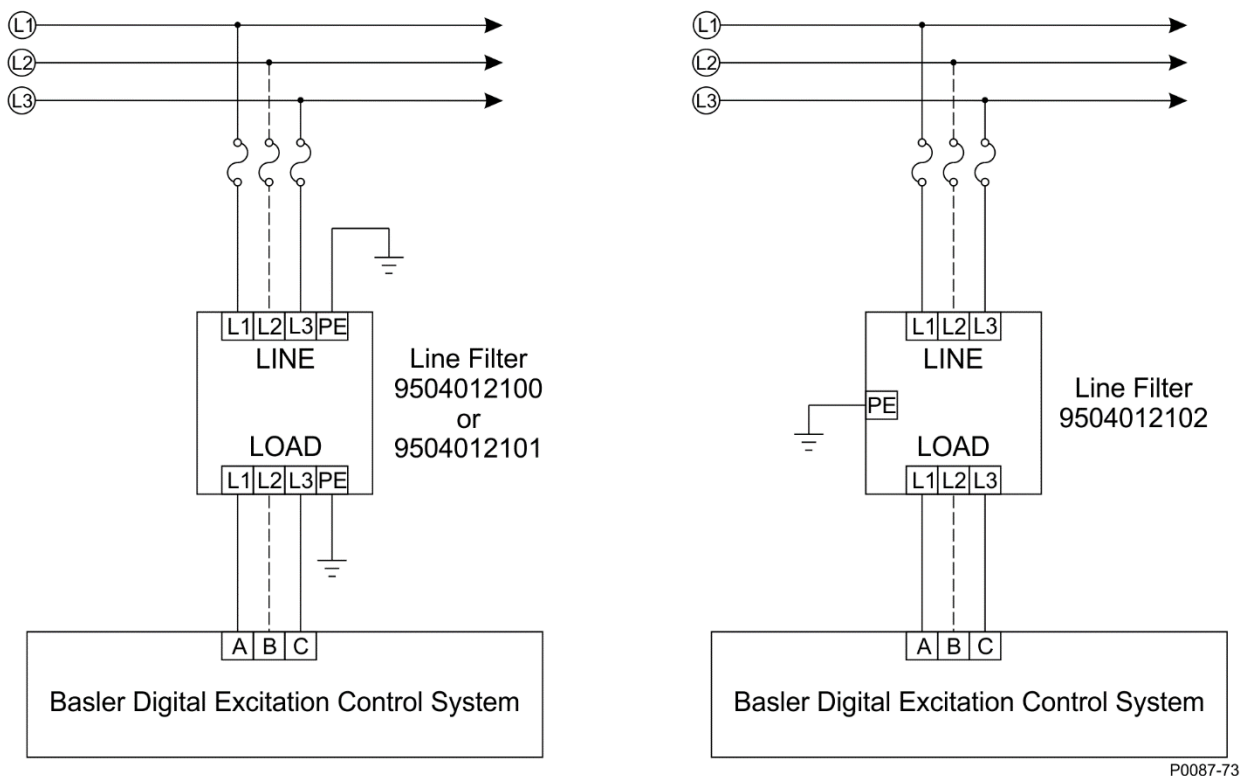


P0087-72

Figure 3. Overall Dimensions for Model 9504012102

Publication	Revision	Instructions	Date	Page
9504000994	A		03/19	3 of 4

For terms of service relating to this product and software, see the *Commercial Terms of Products and Services* document available at www.basler.com/terms.



P0087-73

Figure 4. Typical Connections for Line Filters

Publication	Revision	Instructions	Date	Page
9504000994	A		03/19	4 of 4

For terms of service relating to this product and software, see the *Commercial Terms of Products and Services* document available at www.basler.com/terms.