

### INTRODUCTION

The optional Field Flashing Assembly is used with a DECS-250E to apply flashing power to an exciter field.

There are two models: Basler part number 9504018100 is for 125 Vdc field flashing voltage and 9504018101 is for 24 Vdc field flashing voltage. The maximum field flashing current rating is 30 Adc for both models.

Field flashing is triggered when a DECS-250E output contact, programmed as a Field Flash Active output, closes and enables the Field Flashing Assembly. When enabled, the Field Flashing Assembly applies flashing voltage to the field from an external 125 Vdc or 24 Vdc source (depending on model). Flashing is applied until the generator voltage increases to the level of the DECS-250E Field Flash Dropout Level setting or the DECS-250E Maximum Field Flash Time delay expires.

Field Flashing Assembly features include adjustable field flashing resistors, a flashing diode, and field flashing indication output contacts. The 125 Vdc Field Flashing Assembly includes four 3-ohm, 1,000 W resistors that can be adjusted to limit the field flashing current to an acceptable level. The 24 Vdc Field

Flashing Assembly includes one adjustable 1.74 ohm, 600 W resistor for the same purpose. The flashing diode protects the external flashing source from the voltage developed across the field. The Field Flashing Indication output contacts close during field flashing when the Field Flashing Assembly is enabled by the DECS-250E.

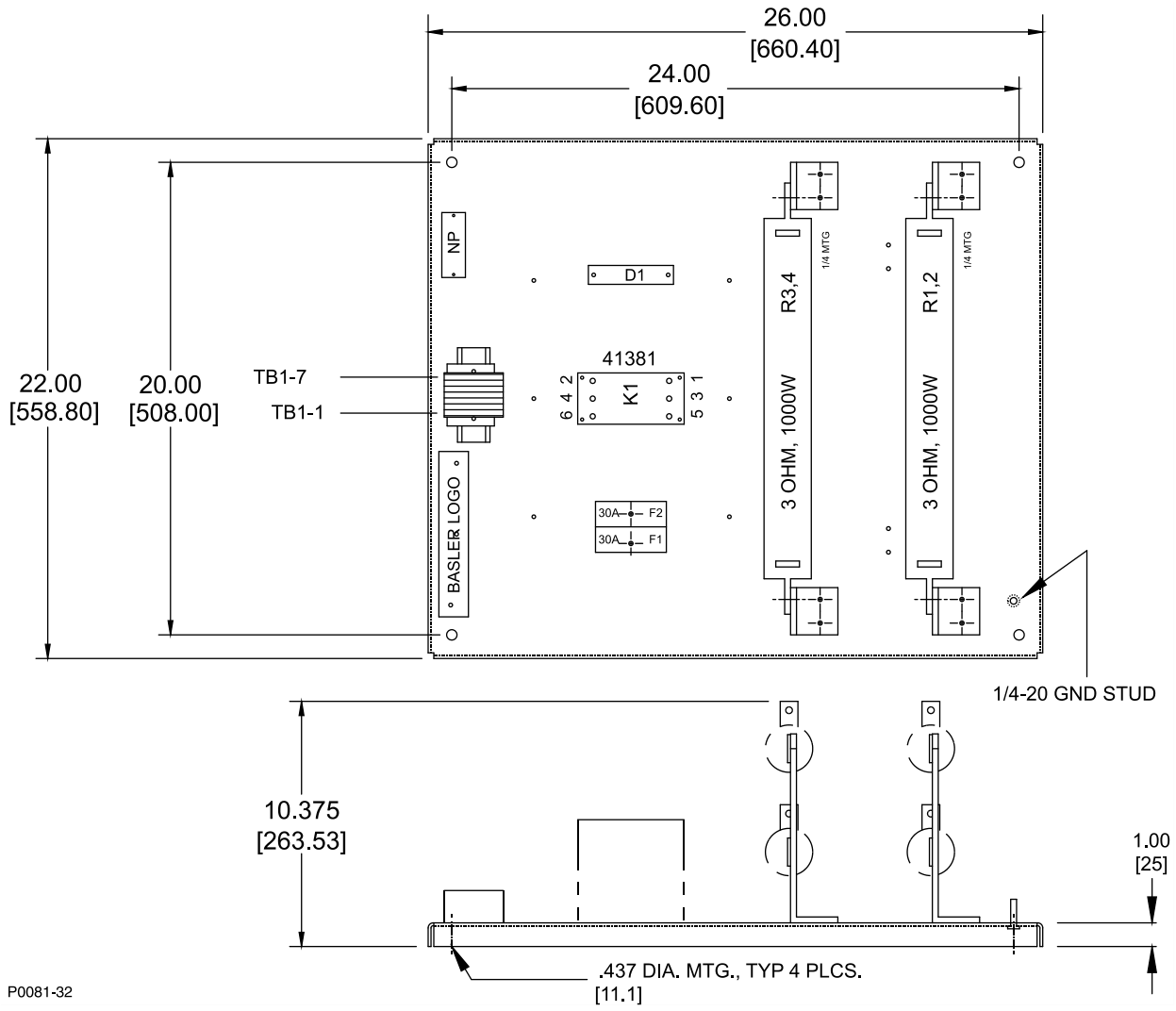
### MOUNTING

[Figure 1](#) illustrates the overall dimensions and the location of the assembly components for the 125 Vdc Field Flashing Assembly. [Figure 2](#) illustrates the overall dimensions and the location of the assembly components for the 24 Vdc Field Flashing Assembly. Measurements are in inches [millimeters]. The 125 Vdc assembly chassis weighs approximately 70 lb (31.75 kg) and the 24 Vdc assembly chassis weighs approximately 50 lb (22.68 kg).

### CONNECTIONS

[Figure 3](#) illustrates the internal 125 Vdc Field Flashing Assembly connections and the external connections of a typical application. [Figure 4](#) illustrates the internal 24 Vdc Field Flashing Assembly connections and the external connections of a typical application.

Publication <b>9504000992</b>	Revision —	<b>Instructions</b>	Date <b>03/16</b>	Copyright <b>2016</b>
----------------------------------	---------------	---------------------	----------------------	--------------------------



P0081-32

**Figure 1. Overall Dimensions for 125 Vdc Field Flashing Module**

Publication <b>9504000992</b>	Revision -	<b>Instructions</b>	Date <b>03/16</b>	Page <b>2 of 4</b>
----------------------------------	---------------	---------------------	----------------------	-----------------------

For terms of service relating to this product and software, see the *Commercial Terms of Products and Services* document available at [www.basler.com/terms](http://www.basler.com/terms).

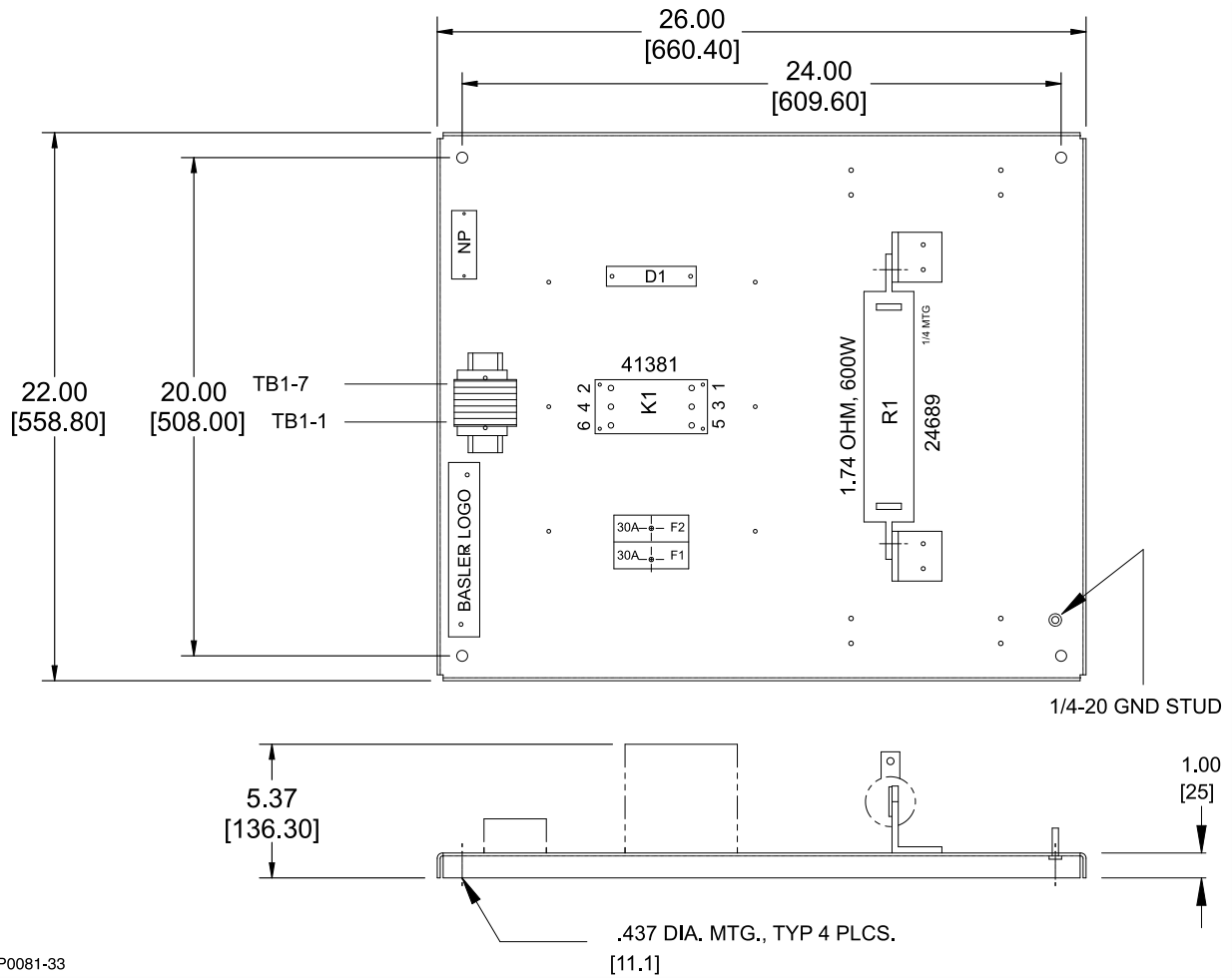
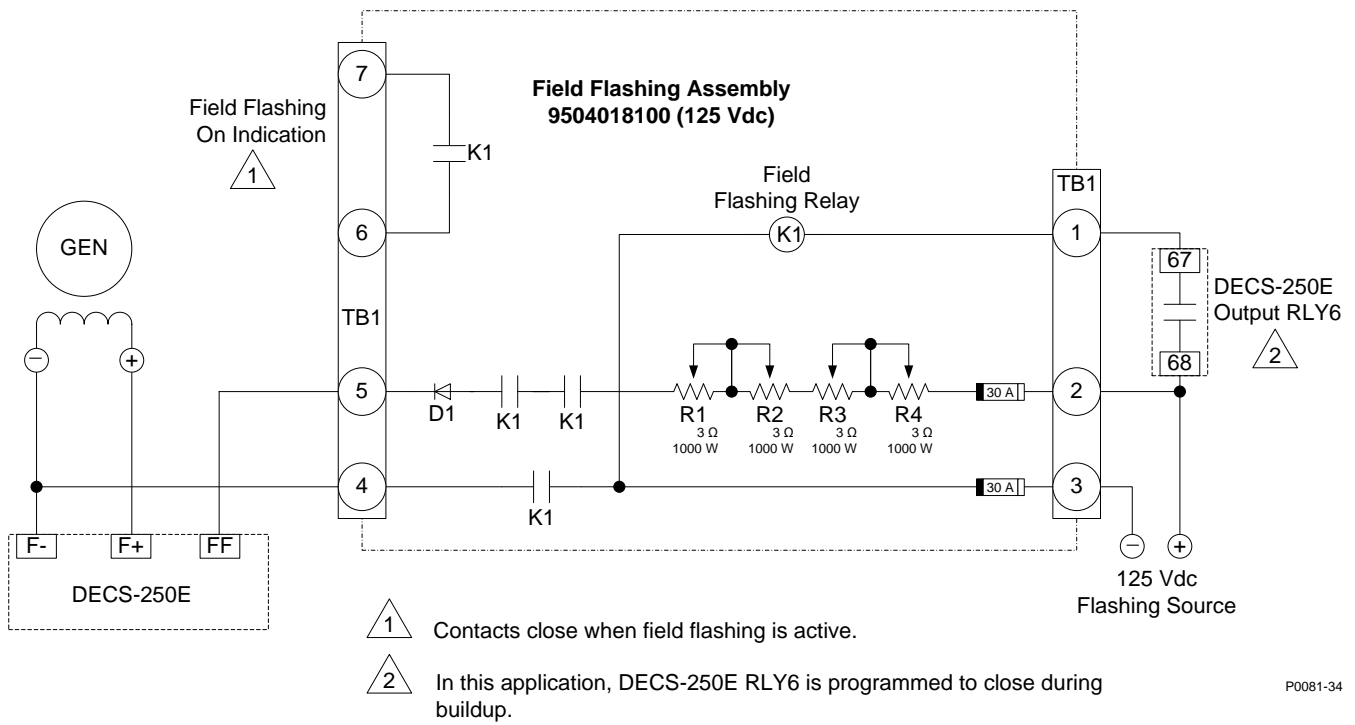


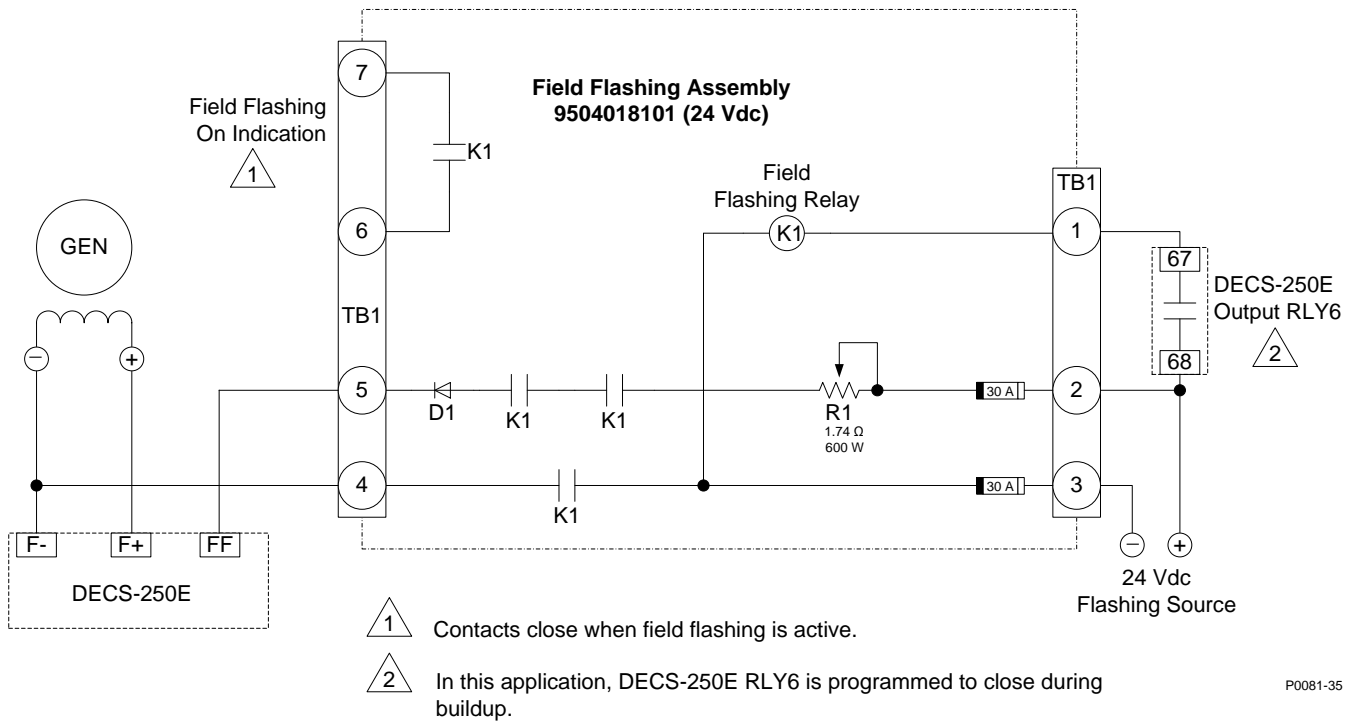
Figure 2. Overall Dimensions for 24 Vdc Field Flashing Module

Publication <b>9504000992</b>	Revision -	<b>Instructions</b>	Date <b>03/16</b>	Page <b>3 of 4</b>
----------------------------------	---------------	---------------------	----------------------	-----------------------

For terms of service relating to this product and software, see the *Commercial Terms of Products and Services* document available at [www.basler.com/terms](http://www.basler.com/terms).



**Figure 3. Typical Connections for 125 Vdc Field Flashing Module**



**Figure 4. Typical Connections for 24 Vdc Field Flashing Module**

Publication <b>9504000992</b>	Revision -	<b>Instructions</b>	Date <b>03/16</b>	Page <b>4 of 4</b>
----------------------------------	---------------	---------------------	----------------------	-----------------------