

Battery exchange process for IG/IS-NT, IG/IS-CU, ID-DCU, IL-NT, IC-NT, ID-Lite and ID-Mobile controllers



Application Sheet



Contents

Contents	- 2 -
Introduction	- 3 -
IG/IS-NT, IG-CU and ID-DCU.....	- 4 -
Battery type	- 4 -
Battery exchange process.....	- 4 -
IS-CU	- 9 -
Battery type	- 9 -
Battery exchange process.....	- 9 -
IL-NT, IC-NT, ID-Lite	- 11 -
Battery type	- 11 -
Battery exchange process.....	- 11 -
General information.....	- 12 -
ID-Mobile	- 13 -
Battery type	- 13 -
Battery exchange process.....	- 13 -
General information.....	- 14 -

Introduction

The aim of this application sheet is to show a way how to exchange battery in IG/IS-NT, IG/IS-CU, ID-DCU, IL-NT, IC-NT, ID-Lite and ID-Mobile controllers. You can exchange battery by yourself, but **ComAp would not be responsible for controller damage caused by battery exchange**. It is strongly recommended to send a unit for battery exchange to ComAp.

Controller battery is used for power supply of a module which is responsible for controller RTC (Real Time Clock). If battery is flat, real time and some statistics data are lost. Controller firmware and configuration (binary inputs setting, PLC configuration etc.) are not affected, but setting of some setpoints (e.g. Controller address, RS232 mode) may be changed and it might make controller unable to operate.

IG/IS-NT, IG-CU and ID-DCU

Battery type

IG/IS-NT, IG-CU, ID-DCU and IS-CU (BT1 battery): BR 1225-1VC, made by Panasonic. Text information about battery type etc. is on positive terminal of the battery, but battery polarity should be checked anyway (using voltmeter).

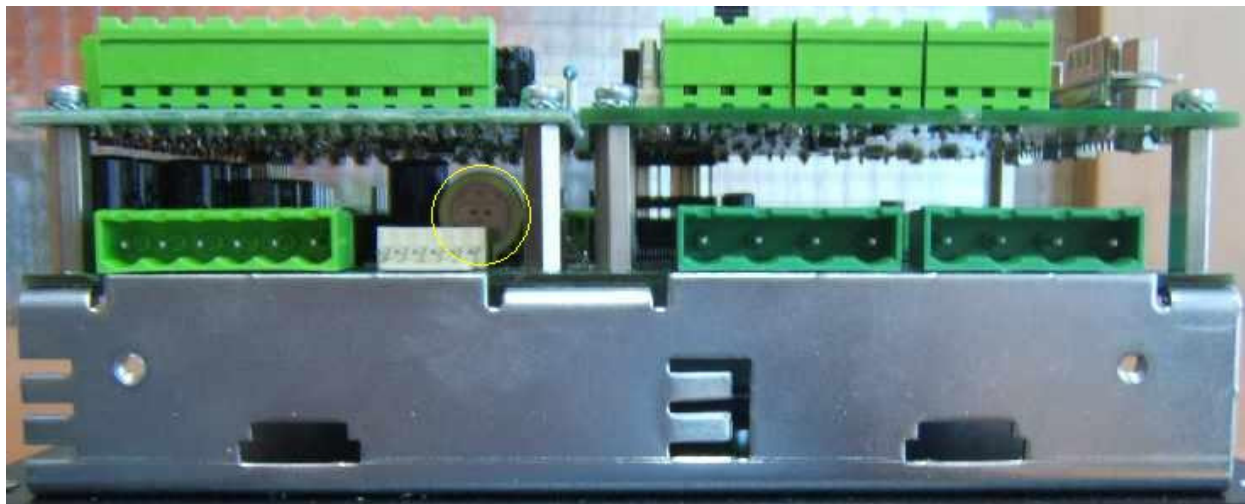
IS-CU (BT2 battery): BR 1225, made by Panasonic.

Lifetime of the battery guaranteed by the producer is 10 years.

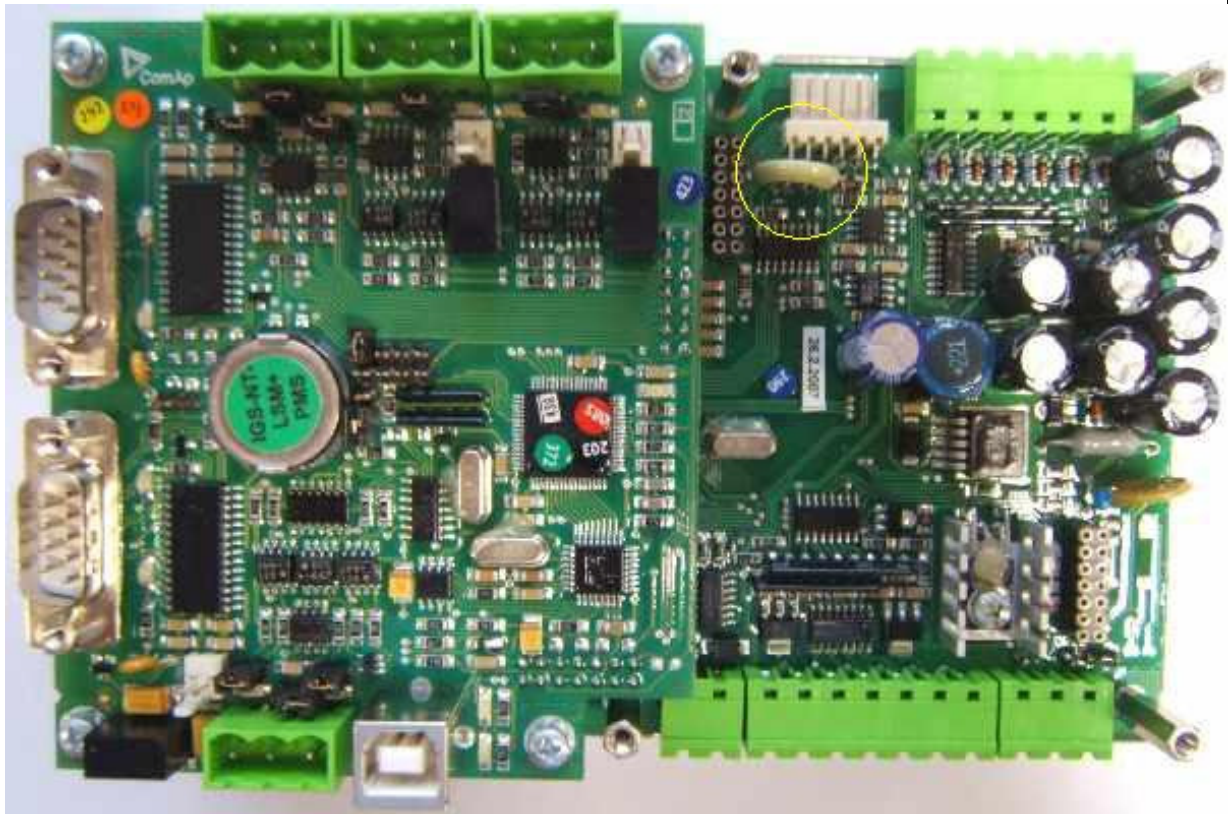
Battery exchange process

1. Download an archive from the controller and save it.
2. Disconnect power supply from the controller.
3. Remove controller cover.
4. See the picture *IG/IS-NT: Battery position in the controller* for information about battery and PCB position in the controller. Remove both upper PCB's and lower PCB (remove upper PCB only in case of IG-CU or ID-DCU controller). Battery position on the PCB is visible on the picture *IG/IS-NT: Battery position on the PCB*.
5. Solder the old battery out.
6. Solder the new battery on according to the picture *IG/IS-NT: Battery polarity*.
7. Assemble the controller and switch it on.
8. Upload the saved archive to the controller .
9. Set controller statistics according to the saved archive and set correct time and date.

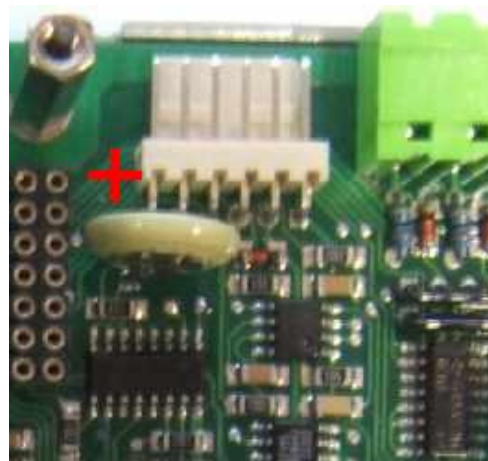
Note: See pictures related to IG-CU or ID-DCU controller, if you are exchanging battery in this type of controller.



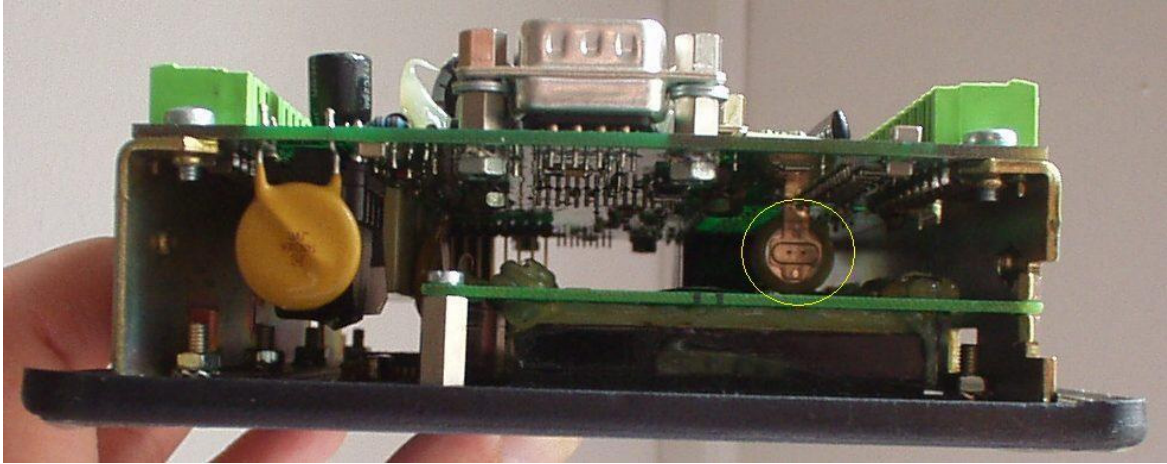
IG/IS-NT: Battery position in the controller



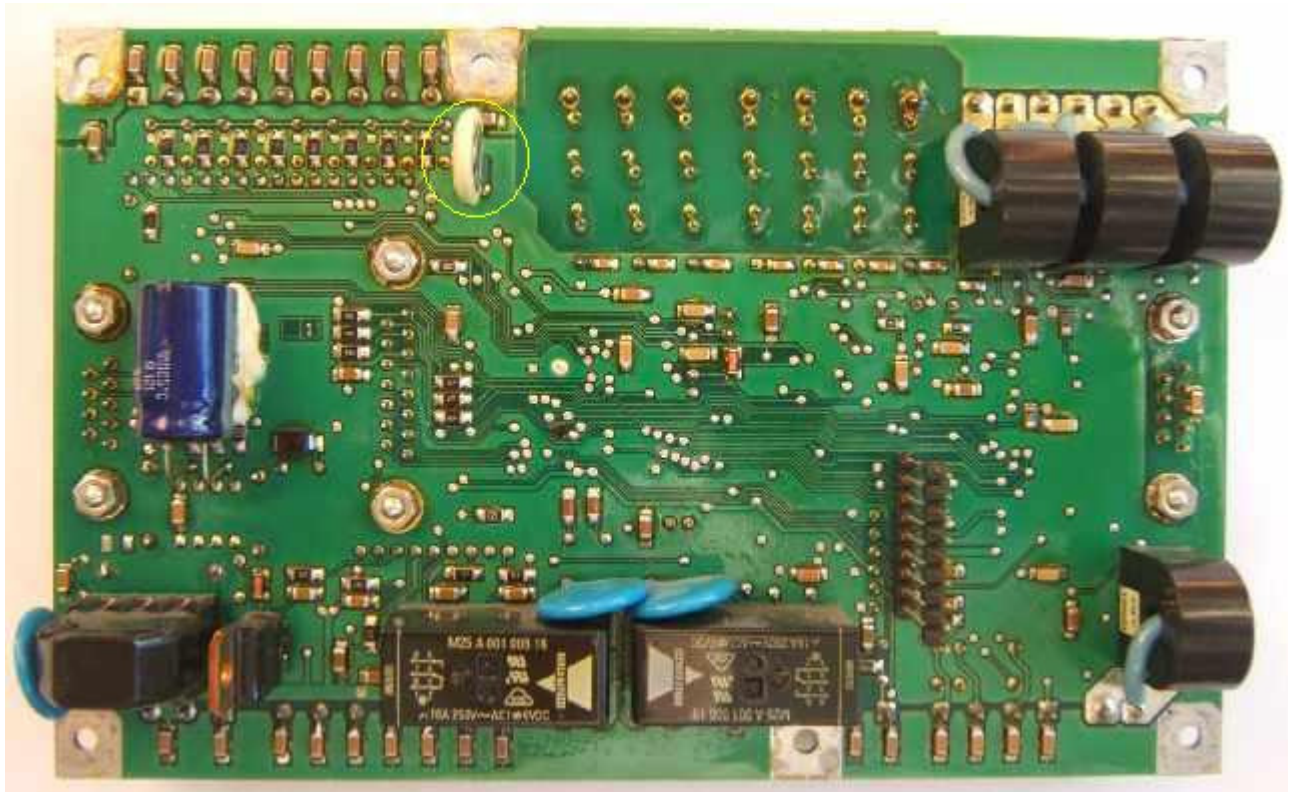
IG/IS-NT: Battery position on the PCB



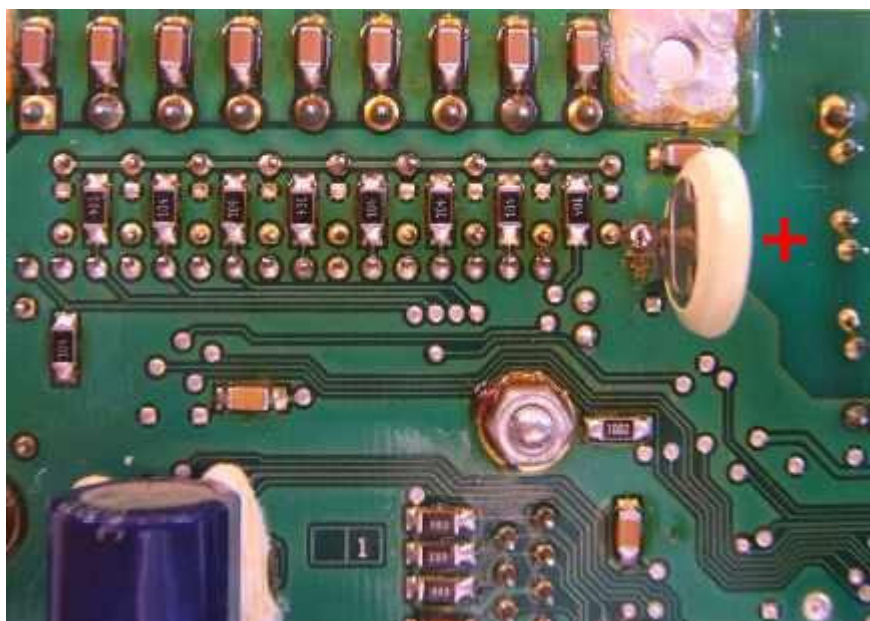
IG/IS-NT: Battery polarity



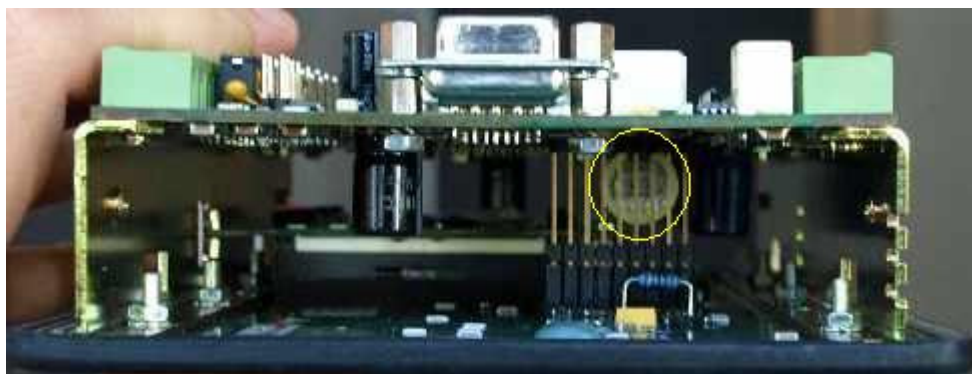
IG-CU: Battery position in the controller



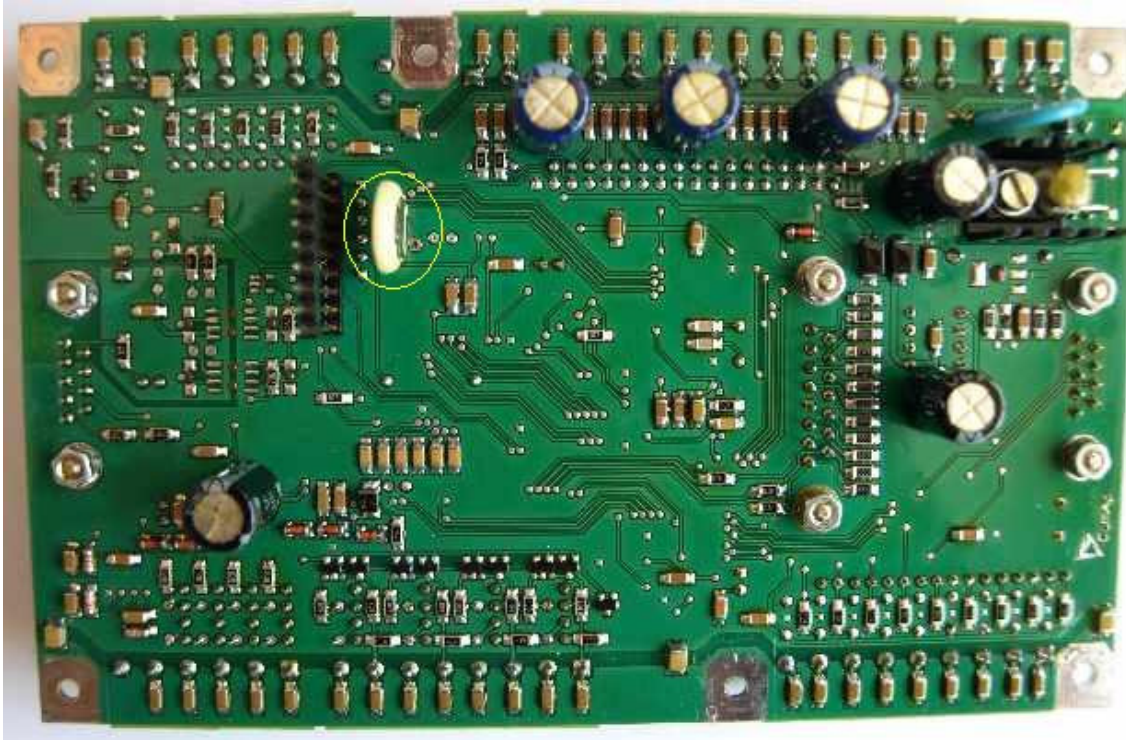
IG-CU: Battery position on the PCB



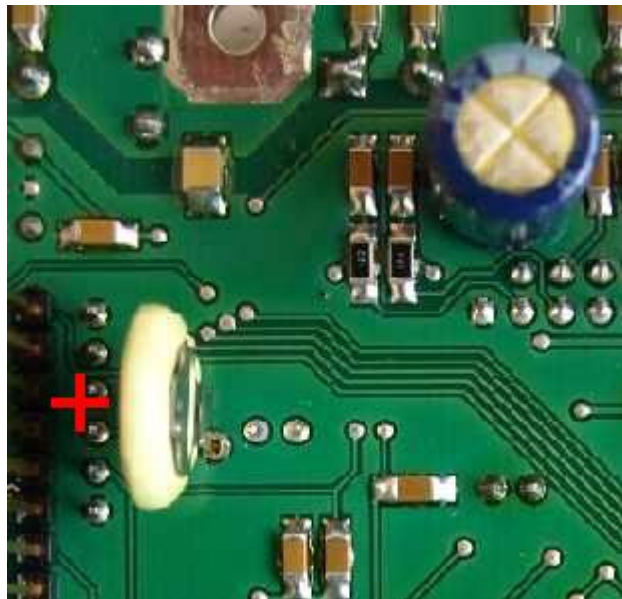
IG-CU: Battery polarity



ID-DCU: Battery position in the controller



ID-DCU: Battery position on the PCB



ID-DCU: Battery polarity

IS-CU

Battery type

IS-CU (BT1 battery): BR 1225-1VC, made by Panasonic.

Text information about battery type etc. is on positive terminal of the battery, but battery polarity should be checked anyway (using voltmeter).

IS-CU (BT2 battery): BR 1225, made by Panasonic.

Lifetime of the battery guaranteed by the producer is 10 years.

Battery exchange process

Battery in the IS-CU controller may be placed at two positions, see the picture *IS-CU: Battery polarity and jumper placing* for information about available battery positions.

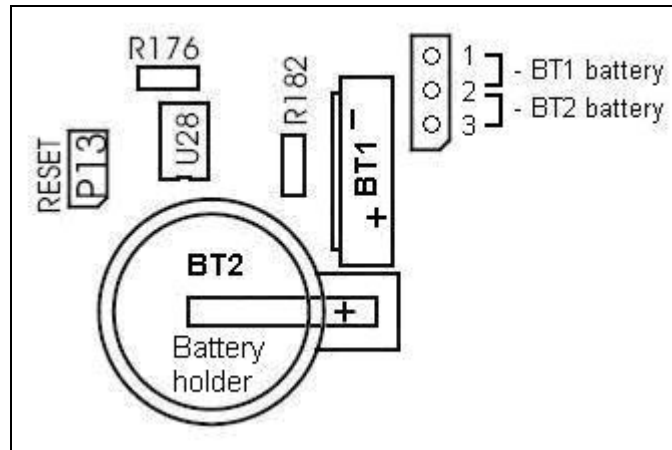
Controllers are produced with battery placed at the position BT1 (soldered on the controller PCB) and it is recommended to use position BT2 for battery exchange.

BT2 battery (BR 1225) adding:

1. Download an archive from the controller and save it.
2. Disconnect power supply from the controller.
3. Remove controller cover.
4. See the picture *IS-CU: Battery position on the PCB* for information about battery position. Place the battery to the battery holder, positive terminal facing upwards (it is not necessary to remove battery BT1).
5. Remove a jumper from terminals 1 and 2 (see the picture *IS-CU: Battery polarity and jumper placing*).
6. Place the jumper on terminals 2 and 3.
8. Assemble the controller and switch it on.
8. Upload the saved archive to the controller .
9. Set controller statistics according to the saved archive and set correct time and date.



IS-CU: Battery position on the PCB



IS-CU: Battery polarity and jumper placing

IL-NT, IC-NT, ID-Lite

Battery type

Use only CR1225 lithium battery.

Lifetime of the battery guaranteed by the producer is 10 years.

Battery exchange process

Replace the battery, if the alarm *Low BackupBatt* occurs. Follow these instructions:

1. Download an archive from the controller and save it.
2. Disconnect all terminals from the controller and remove the controller from the switchboard.
3. Release the rear cover using a flat screwdriver or another suitable tool.



4. Remove all plug-in modules.
5. The battery is located in a holder on the circuit board. Remove the old battery with a small sharp screwdriver and push with a finger the new battery into the holder.



6. Put the rear cover back. Use slight pressure to lock the snaps into the housing. **Pay attention that the cover is in correct position and not upside down!**
7. Plug the modules back into the slots.
8. Power the controller on, adjust date and time and check all setpoints.

General information

Soldering conditions: temperature up to 350 Celsius degrees and soldering time up to 5s.

ID-Mobile

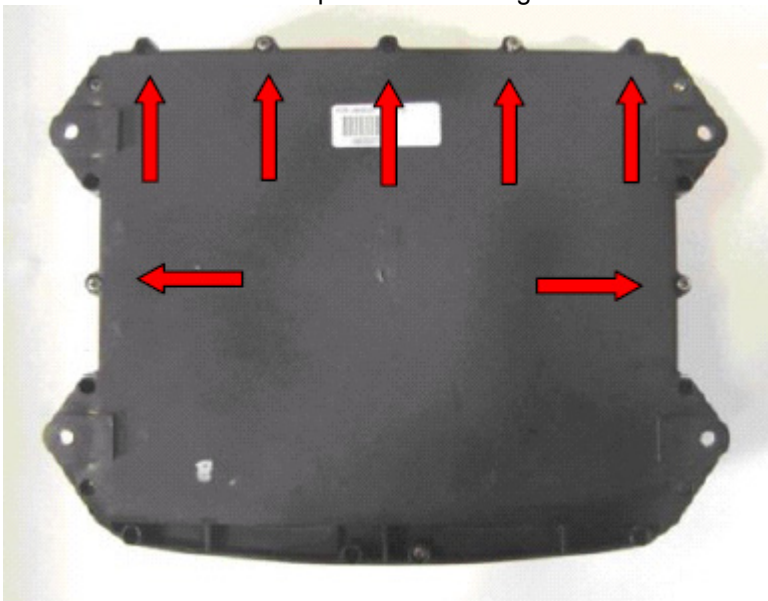
Battery type

Use only 338A Renata battery (3V/48mAh).

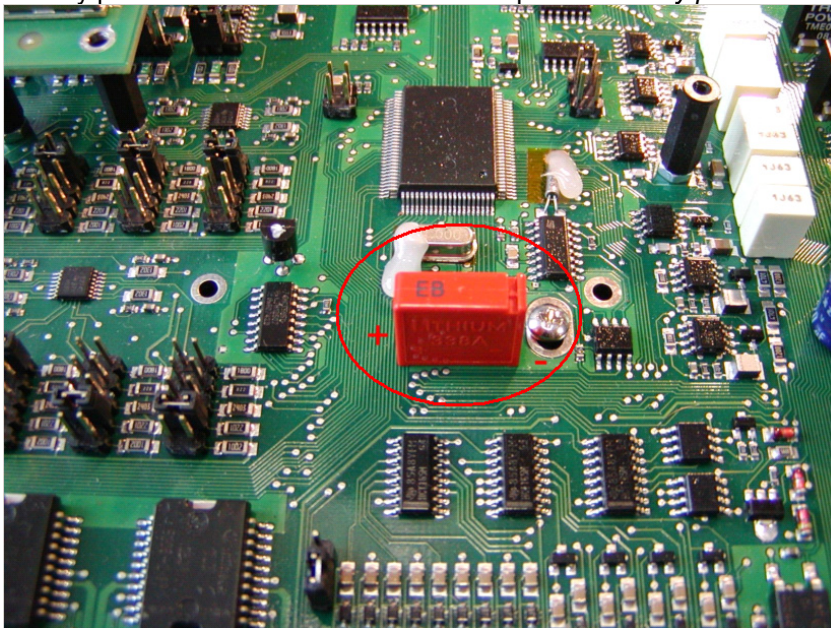
Lifetime of the battery guaranteed by the producer is 10 years.

Battery exchange process

1. Download an archive from the controller and save it.
2. Disconnect all terminals from the controller and remove the controller from the vehicle.
3. Unscrew the screws and open the cover to get access to the battery.



4. Battery placement on PCB is visible on the picture *Battery position on PCB and polarity*



Battery position on PCB and polarity

5. Solder the old battery out.
6. Solder the new battery on according to the picture *Battery position on PCB and polarity*
7. Fix the ID-Mobile cover - take care to avoid antenna cables jam in between the cover and base part of ID Mobile box, close the cover, gently (max torque 1 Nm) tight the screws specially the side positions.
8. Upload the saved archive to the controller.
9. Set controller statistics according to the saved archive and set correct time and date.

General information

Soldering conditions: temperature up to 350 Celsius degrees and soldering time up to 5s.