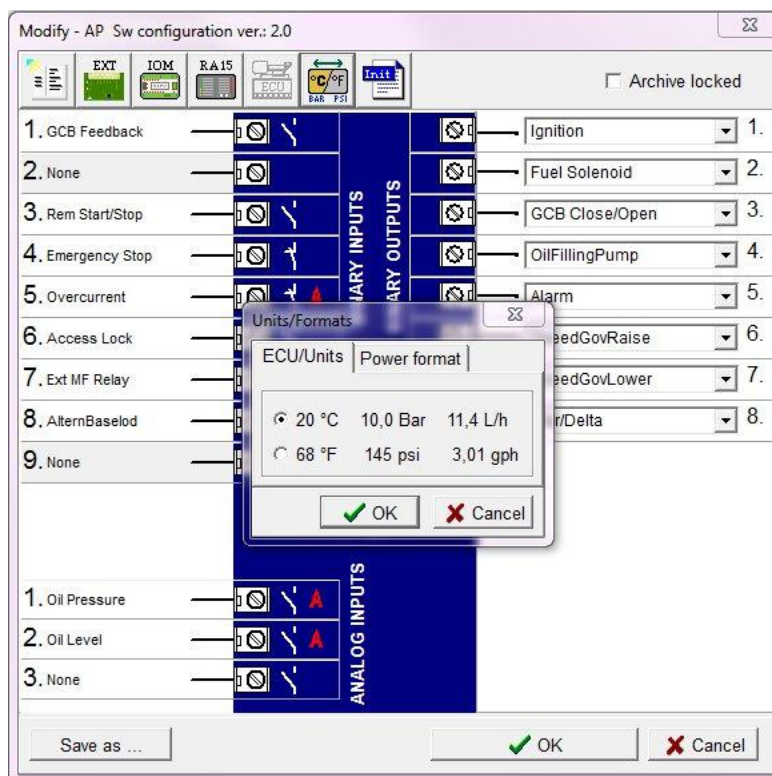


1. Main changes in LiteEdit-4.6.9

New Features

- Added support for unit conversion**
 Controller firmwares which support unit conversion are now supported. Switching units can be done via „Controller -> Configuration -> Modify“ -> „Units/Formats“ (see picture). Tab „ECU“ is renamed to „ECU/Units“.



Repairs / Improvements

- Fix for AnalogSwitches group**
 Ranges and units for setpoints from the group AnalogSwitches are now being correctly calculated.

2. Main changes in LiteEdit-4.6.8

New Features

- **Added possibility to erase statistics for ID-FLX-DC**
It is now possible set and reset statistics (TotalIn, TotalOut, NumOfCycles) in ID-FLX-DC firmware.
- **Added support to modify blocking conditions for IntelliPro mains protection**
New version of Lite Edit allows setting of IntelliPro blocking conditions for individual functions in “Blocking conditions” matrix. It provides simple enabling and disabling of functions either in all cases or only under specific conditions. It also provides option of blocking particular functions by binary input or blocking if not in parallel to mains operation.

NOTE

This feature replaces the selection of disable/enable option in IntelliPro “General” group of setpoints, as well as selection of blocking binary inputs for selected functions.

Please see IntelliPro IntelliPro 1.3 Comprehensive guide for more details.

Repairs / Improvements

- **Fix for cloning issue**
In some cases it was not possible to finish cloning process due to connection timeout. This problem has been fixed.
- **Fix for switching units (°C na °F)**
It is now possible to switch units from continental to US style properly for all supported firmwares.
- **Fix for ID-FLX-DC AI4-AI5**
Configuration of AI4-AI5 is now possible as intended.

3. Main changes in LiteEdit- 4.6.7

New Features

- **Added support for “window” protections for ID-FLX-Lite**
It is now possible to choose several protection levels for analog inputs (see ID-FLX-Lite 1.7 Reference guide for more details).

Repairs / Improvements

- **Fix for AIN4-9 configuration**
It is now possible to set correctly voltage measurement for AIN4-9 (see ID-FLX-Lite 1.7 Reference guide for more details).
- **Fix for ID-FLX-CFG control window**
Control window for ID-FLX-CFG is now displayed correctly

4. Main changes in LiteEdit-4.6.6

New Features

- **Possibility of archive saving even after connection failure**
When is the LiteEdit connected via direct connection, Internet Bridge or AirGate and then suddenly occurs the connection failure, newly it is possible to save the opened archive.

Repairs / Improvements

- **Automatic firmware upgrade process improved**
If there is found in PC newer version of firmware than is used in connected controller LiteEdit offers automatic upgrade of the controller. Newly if the upgrade is confirmed by the user,
 - LiteEdit automatically saves original controller archive to the Documents\ComAp_PC Suite\LiteEdit\Archives\AutoUpdateBackup folder in format ControllerName_YYYYMM_##.aix.
 - In next step the controller firmware is upgraded.
 - The next step depends on type of upgrade:
 - A. Upgrade e.g. from 1.2.1 to 1.2.2 version (to small version):
 - LiteEdit automatically uploads the original archive into the controller
 - B. Upgrade e.g. from 1.2.1 to 1.3 or 1.3.2 or 2.0 (to large version)
 - There appears a note with the backed up file location and option of continuing in "Archive/Configuration Upgrade"
 - If the user wants to continue in it (OK) the "Archive/Configuration Upgrade" tool appears with already predefined Input Archive (= backed up archive) and relevant Target Archive.

CAUTION:

In case of upgrade to the large version (as is described in B) and after the "Archive/Configuration Upgrade" procedure it is necessary to upload manually upgraded archive to the controller.

- **Automatic firmware upgrade repaired**
During Automatic Firmware Upgrade there were also overwritten communication parameters and it could cause loss of communication with upgraded controller.
- **Archive/Configuration Upgrade tool repaired**
 - There was a bug in AIN 4 to AIN 9 configuration upgrade in case of ID-FLX controllers.
 - There was a bug of curve import during upgrade of older configuration versions
- **Curve characteristics import repaired**
In case of ID-FLX controllers there was a bug in curve characteristic import at analogue inputs 6 to 9. It was possible to import resistance curve instead of voltage curve to voltage inputs AIN6 to AIN9.
- **Chinese translation repaired**
 - There were incorrect characters in BI, B0 and AI names in Configuration window
 - There were incorrect characters in window of Customize object

5. Main changes in LiteEdit-4.6.5

Improvements

- **File structure optimized**
Optimized file structure supporting efficient program run.

6. Main changes in LiteEdit-4.6.4

New features

- **Support of IntelliCompact-NT programming via IB-NT external communication module**
Now it is possible to program IC-NT controller via IB-NT Ethernet (AirGate) connection.

NOTE:

The programming is not allowed via GSM connection.

- **Interconnection of setpoints between Basic settings and Alternate Cfg groups**
Selected setpoints in IntelliLite-NT (SW 2.0 and newer) in group of Basic settings were interconnected with first group of setpoints from Alternate Cfg. When any of parameter (*Nominal RPM, Nominal Freq, NomVoltsPh-N, NomVoltsPh-Ph, Nomin Current and Connect Type*) from Basic settings is changed this change is also mirrored in first group of parameters in *Alternate Cfg* and other way around.

NOTE:

The interconnection works with opened offline archive as well.

- **Support of SMS sending in second language**
Generating of conversion table for second language SMS support

Repairs / Improvements

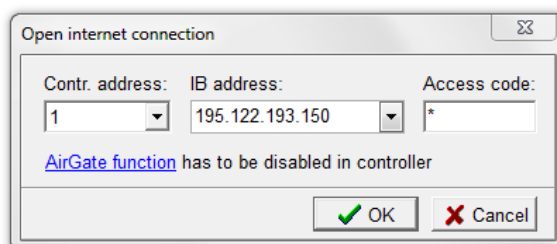
- **Work with new language improved**
It is necessary to set-up "Local id" for newly created language before start of translation. If the "Local id" is not set-up (there is default value "0x0800") the "Select Local id for the newly created language" alert message appears.
- **Archive / Configuration upgrade improvement**
The Archive / Configuration upgrade failed when the source archive contained graphical font (e.g. Chinese) as a second language and the target archive contained different second language.
- **Control window for IL-NT AMF8 and IL-NT AMF9 was repaired**
Control window of LiteEdit was not showing correct values when used AMF8 or AMF9 controllers from IntelliLite-NT family.
- **Exported Communication objects file was repaired**
Exported file of Communication objects was repaired in the part of Alarm Events.

- **Missing password in “Predefined Connections” was repaired**
When connecting to controller via Predefined Connections the password was not automatically entered in spite of the fact that it was correctly filled in Predefined Connections.
- **Corrections in LiteEdit form windows**
Some of form windows of Language/Dictionary function were repaired.

7. Main changes in LiteEdit-4.6.3

New features

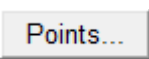
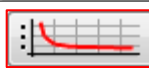
- **Archive/Configuration upgrade from any branch of IL-NT to standard IL-NT**
Function of Archive/Configuration upgrade has had a limitation in input and output archives which had to be the same branch and application. Considering the new IL-NT 2.0 firmware that takes over some features from other branches (e.g. WSUP) it is now possible to upgrade archives/configuration of these older branches of IL-NT to the newer IL-NT standard.
- **Notification about essential AirGate function switching off during internet bridge connection**
When used internet bridge connection the AirGate function has to be disabled in controller (Setpoints -> Comms Settings -> AirGate -> DISABLED). There was added the reminder of this fact right into the “Open internet connection” and “Open predefined connection” windows to prevent misunderstandings during the internet bridge connection.

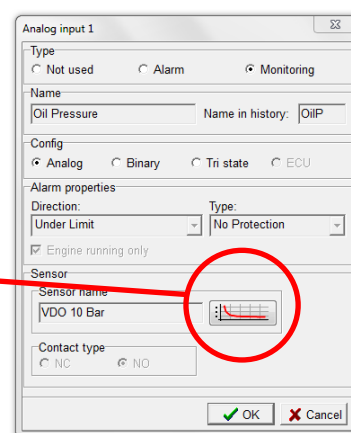


8. Main changes in LiteEdit-4.6.2

New features

- **Button of the sensor characteristic has been changed as shown below:**

The original  button has been changed to more intuitive one .



- **Support of IntelliPro controller archives in Open dialogues**
Support of AIP archives.
- **Support of IntelliPro features**
For more details see IntelliPro 1.3 New Features list available under following link:
<http://www.comap.cz/products/detail/intelipro/downloads/#tabs>

LiteEdit 4.6.9 – New Features | ©ComAp – October 2013 | LiteEdit-4.6.9-New Features.pdf

9. Main changes in LiteEdit-4.6.1

New features

- **FW-Import is now improved and more user-friendly**
This change simplifies the process of new firmware import and rewriting of newer versions of firmware files.

Repairs

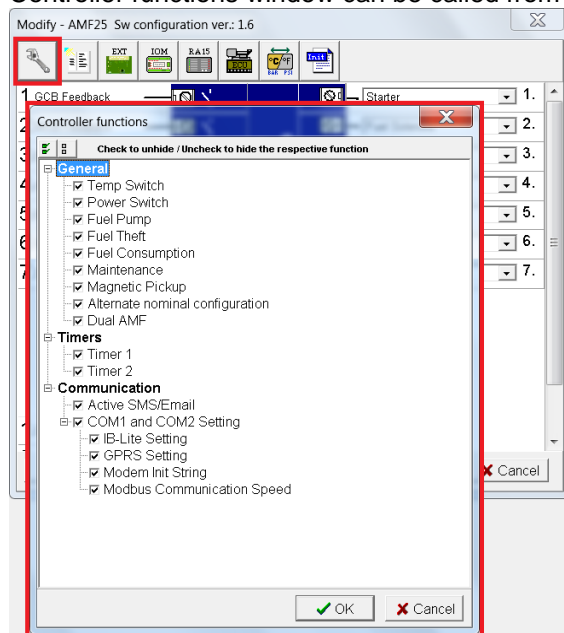
- In some cases there was announced mismatch between ECU List version in the computer and ECU version in the controller although both versions were actually identical.
- After firmware upgrade to IL-NT 2.0 there was displayed the User mode instead of Engineer mode on the controller screen. Now the Engineer mode is displayed after IL-NT 2.0 programming.

10. Main changes in LiteEdit-4.6

New features

- **There is new feature called "Controller functions" (reducing number of visible setpoints)**
This function may simplify controller interface and configuration in case some of the controller functions/features are not used, what will be beneficial mainly for gen-set service and production. In case you unselect such a function from the "Controller functions" list all logical functions (logical binary inputs and outputs), setpoints and values connected with this function are hidden and invisible in the interface (controller screens and LiteEdit windows).

Controller functions window can be called from menu Controller -> Configuration -> Modify.



Hint:

Hiding of not used logical functions, setpoints and values is done based on “Controller functions” setting, but also automatically according to configuration of analog inputs, extension modules and ECU.

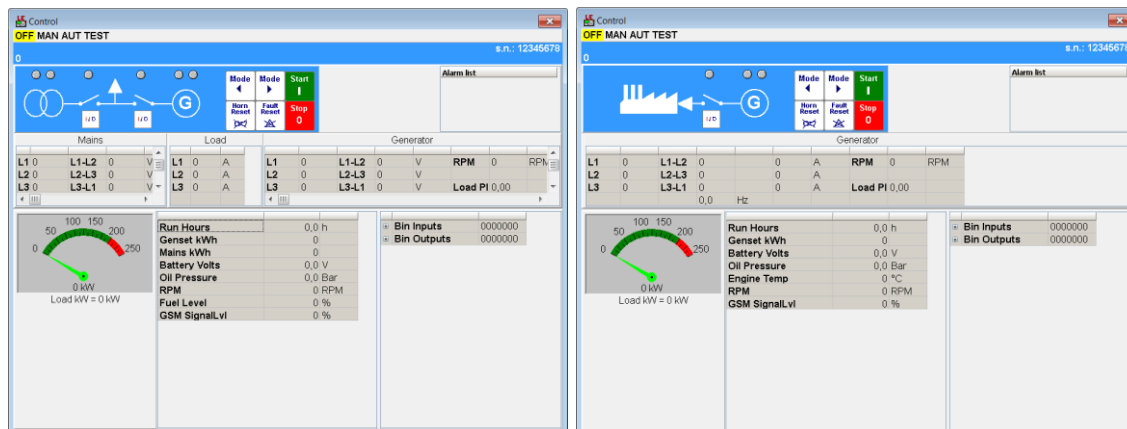
NOTE:

This function is not available unless it is also supported in the respective controller.

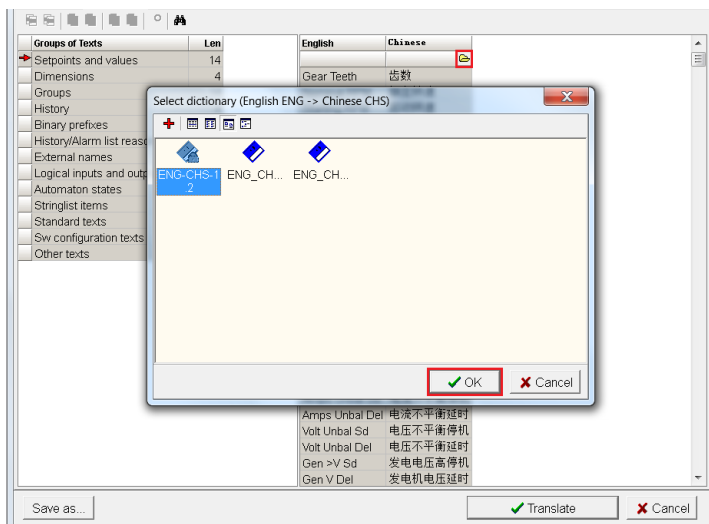
- **Newly it is possible to adjust size of the Information window**
This window includes all setpoints which were not overwritten in case the setpoints should be overwritten during programming
- **Support of history records based on running hours in controllers with no RTC**
- **Programming through AirGate connection differentiated**
In case of GPRS connection Programming is not possible (probability of slow connection)
In case of connection through IB-Lite Programming is possible (expectation of High-speed connection)
- **Newly it is possible to switch between AMF and MRS Control window**
Switching is based on AMF Settings: Operation Mode setpoint setting and (also in case of On-line connection) on logical binary input AMF FUNCTION state.

Hint:

In case of Off-line connection the Control window relates to the situation when archive was saved. The Control window which was active at that time is displayed in Off-line archive. Then it is possible to change the Control window by changing the AMF Settings: Operation Mode setpoint setting regardless binary inputs state.



- **Use Default Only button removed and its functionality replaced by OK button**
In case Default dictionary should be chosen for translation within Select dictionary dialog it is not necessary to confirm it by Use Default Only button any more, now it is confirmed by OK button as any other custom dictionary.

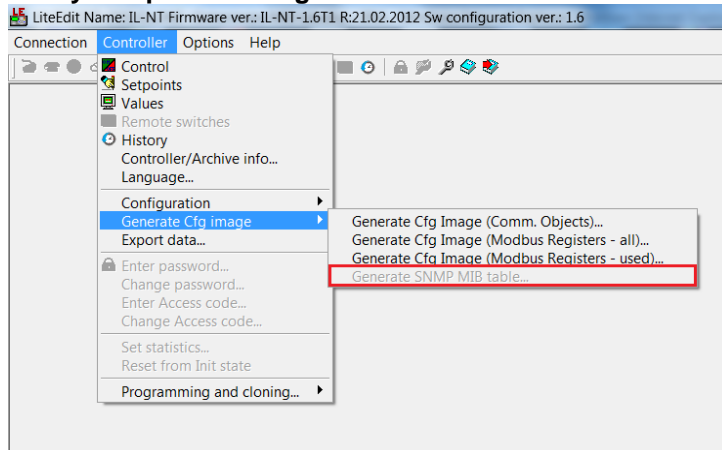

Hint:

There is always just one Default dictionary, whilst number of custom dictionaries is not limited. In case there are more Default dictionaries for respective language in your PC anyway only one is automatically chosen by LiteEdit and this dictionary is then visible in Select dictionary dialog.

- **Newly only supported ECU values can be assigned to analog inputs of the controller**
In case respective ECU values (oil pressure, water temp or fuel level) are not supported in the configured ECU it is not possible to assign such ECU value to controller analog input (AI1 – AI3).
- **New type of Open dialog (typical for Windows Vista and Win 7) is used**
- **Functional exception for Archive/Configuration upgrade for special IL-NT-WSUP firmware**
It is possible to do the upgrade from IL-NT-WSUP-1.2 -> IL-NT-1.6 (and higher), though normally it is only possible to do the upgrades within one application and/or one branch.
- **Newly Japanese language is supported**
It also has to be supported in the respective controller.
- **Create new language dialog was removed**
It's not part of the procedure any more. Respective setting may be done in Languages window.

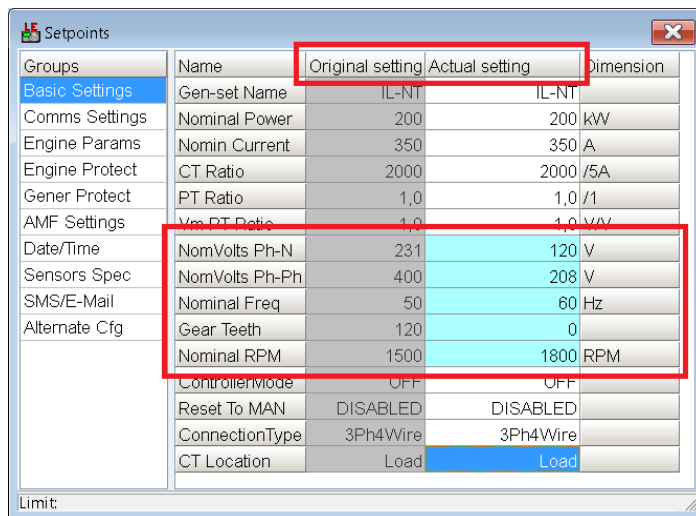


- **Newly it is possible to generate SNMP MIB table in case it is supported in controller**



NOTE:
Controller firmware must support SNMP function as well to enable using it in IB-Lite. Please refer to the controller New Features lists for information about this support.

- **Newly changed setpoints emphasized with light blue background**
All the setpoints changed from the moment Setpoints window is opened are emphasized using light blue color. It is possible to see original value in new column Original setting. Original values inform about setting/situation at the moment when the Setpoint window is opened. New values can be seen in the column Actual setting. Once you close the Setpoint window all the information about differences are lost. The whole process of comparison is started again once the Setpoint window is opened.



Groups	Name	Original setting	Actual setting	Dimension
Basic Settings	Gen-set Name	IL-NT	IL-NT	
Comms Settings	Nominal Power	200	200	kW
Engine Params	Nomin Current	350	350	A
Engine Protect	CT Ratio	2000	2000	/5A
Gener Protect	PT Ratio	1,0	1,0	/1
AMF Settings	Vm PT Ratio	1,0	1,0	V/V
Date/Time	NomVolts Ph-N	231	120	V
Sensors Spec	NomVolts Ph-Ph	400	208	V
SMS/E-Mail	Nominal Freq	50	60	Hz
Alternate Cfg	Gear Teeth	120	0	
	Nominal RPM	1500	1800	RPM
	Controllerwide	OFF	OFF	
	Reset To MAN	DISABLED	DISABLED	
	ConnectionType	3Ph4Wire	3Ph4Wire	
	CT Location	Load	Load	

Repairs

- **Sometimes during cloning procedure “Leaving statistics” instead “Writing setpoints” message was active**
- **In certain cases ”List index out of bounds (-1)” message popped up during analog output configuration**

- **It was not checked if there was enough space for 2nd language in the controller**

It caused various alarm messages like

- Invalid file format
- ReconfigureJ1939DiagCodes: RemoveLastDiagCode returned False

Now in case there is not enough space in the controller it is announced during download attempt following way: "There is not enough space for configuration file within the controller."

- **Access violation in Import Language dialog**
Right mouse click within empty "Languages available for import" list caused Access violation error
- **It wasn't possible to use Drag and Drop in case the target position was empty**
- **It wasn't possible to configure some ECUs even though they were visible in configuration**
- **Table of Engine and Breaker state values was not present in Cfg Image**
- **In certain cases history in LiteEdit didn't fit precisely to history in controller**
- **"Cannot focus a disabled or invisible window"**
This error message appeared in case of left mouse click on IOM/PTM binary outputs when the IOM/PTM module was not enabled
- **Incorrect signs were imported into the setpoints for AI protections and into dimensions.**
This happened in case LiteEdit was switched to Chinese (alternative) language and analog input name or units (in sensor characteristics window) were changed in the configuration. Now, the names of analog inputs (as well as the names of the curves and units) can be changed only in default (English) language to avoid this issue.
- **Incorrect signs were also imported into the values**
This happened in case LiteEdit was switched to Chinese (alternative) language, then Power Format was changed and then the language was switched back to English (default) language.
- **Some extension modules' values were not displayed in the history**
In certain cases it could accidentally happened that certain columns with extension modules' values were not add into the history, though it was set in the configuration.
- **Wrong language replaced within Import language dialog when Replace button used**
- **Combo box could stay opened before language addition (+) or after language removal (-) in Languages window**