

UNLESS OTHERWISE SPECIFIED:
BURRS-SHARP EDGES AND FOREIGN MATERIAL
RESULTING FROM GOOD MANUFACTURING
PRACTICES ARE ACCEPTABLE PROVIDING THEY
ARE NOT DETRIMENTAL TO ASSEMBLY-FUNCTION
OR SAFE HANDLING AS DETERMINED BY PPD
ENGINEERING

ENGINEERING APPROVAL OF FIRST PRODUCTION
SHIPMENT FROM EACH SUPPLIER IS REQUIRED
PRIOR TO AUTHORIZATION FOR USE ON ENGINE
PRODUCTION

ENGINEERING APPROVAL IS REQUIRED BEFORE
ANY CHANGE IN PRODUCTION PROCESSING OR
LOCATION

MARK FORD PART NO. 3.0mm MIN HIGH LETTERS

CHANGES IN DESIGN, COMPOSITION, OR PROCESSING
FROM THE PART PREVIOUSLY APPROVED FOR
PRODUCTION, MUST BE RESUBMITTED AND APPROVED
THROUGH THE FORD POWER PRODUCTS PART PROCESS
(PPAP) AS DEFINED ON THE PURCHASE ORDER.

LTRS				REVISIONS					
DATE	ORIGINATOR	CHECKER	ENGR APP	REV	ZONE	DESCRIPTION	DATE	BY	APP
RELEASED 1U1L-14N118-AA PER JZ26 PR E01-049									
11-13-01	C.CHAPPUS	K.BURKE	J.ELMORE						
RELEASE 1U1L-14N118-AA NE01-E-11654697-000 040519 CAD Y									
	C.CHAPPUS	K.BURKE	J.ELMORE						

CIRCUIT CHART

CKT	COLOR	GAUGE	LENGTH	FROM	TO	CAV	NOTES
11	I-Y	18	390	1	1	2	F
16	R-LG	16	230	1	11	3	G
57	BK	16	230	1	10	3	H
71	O-LG	18	390	1	4	2	B
72	Y-BK	18	230	1	8	3	F
113	Y-LB	18	390	1	5	2	D
253	DG-W	18	390	1	15	2	C
349	DB	18	2515	1	23	6	A
350	GY	18	2515	1	22	6	B
351	BR-W	18	1090	1	16	SPL2	-
351A	BR-W	18	395	4	C	SPL2	-
351B	BR-W	18	115	5	D	SPL2	-
354	LG-R	18	230	1	18	3	D
358	LG-BL	18	875	1	17	4	B
359	GY-R	18	175	1	9	SPL 1	-
359A	GY-R	18	475	4	A	SPL 1	-
359B	GY-R	18	115	5	D	SPL 1	-
359C	GY-R	18	175	3	B	SPL 1	-
458	O-BK	18	310	1	21	5	A
669	DG-W	18	310	1	20	5	B
674	DB-Y	18	230	1	7	3	F
653	O	18	390	1	19	2	A
650	Y-BK	18	230	1	6	3	K
851	Y-R	18	230	1	2	3	J
852	Y-W	18	230	1	3	3	C
DUMMY	BK	18	150	5	-	7	A

CONN. MTRTW10

CAV	CIRCUIT	COLOR	Gs.
A	-	PLUG	
B	359C	GY-R	18
C	852	Y-W	18
D	354	LG-R	18
E	72	Y-BK	18
F	674	DB-Y	18
G	16	R-LG	16
H	57	BK	16
J	851	Y-R	18
K	850	Y-BK	18

BLACK

ICM23BLACK

23

16

1

1

1

1

1

1

1

1

1

1

1

1

1

1

1

1

1

1

1

1

1

1

1

1

1

1

1

1

1

1

1

1

1

1

1

1

1

1

1

1

1

1

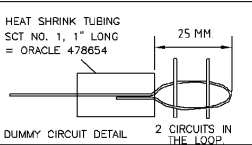
1

1

1

CONN. ICM23BLACK

CAV	CIRCUIT	COLOR	Gs.
1	11	T-Y	18
2	851	Y-R	18
3	852	Y-W	18
4	71	O-LG	18
5	113	Y-LB	18
6	850	Y-BK	18
7	674	DB-Y	18
8	72	Y-BK	18
9	359	GY-R	18
10	57	BK	16
11	16	R-LG	16
12	-	-	-
13	-	-	-
14	-	-	-
15	253	DG-W	18
16	351	BR-W	18
17	358	LG-BL	18
18	354	LG-R	18
19	669	DG/W	18
20	458	O-BK	18
21	458	O-BK	18
22	350	GY	18
23	349	DB	18



COMPONENT LIST

No.	APPLICATION	ITEM	PART NUMBER	SUPPLIER/FORD	QTY	ORACLE	REQ.	DESCRIPTION
1	ICM23BLACK	1	770880-1	002-3482	567411	1	1	CONN. 23 WAY - BLACK
2	WPTWR5HOMO	1	770520-1	001-1849	567308	20	1	TERMINAL
2	WPTWR5HOMO	1	12034342	F1HS-12A664-AA	002-4641	186591	1	CONN. 5 WAY WEATHER PACK
3	MTRTW10	2	12089040	FBHT-14461-CA	001-1170	186158	5	TERMINAL
3	MTRTW10	2	12015323	F1SB-14603-AA	002-1429	192109	5	SEAL
3	MTRTW10	1	12065425	1F2T-14A464-DA	002-4255	186885	1	CONN. 10 WAY
3	MTRTW10	2	12124264	1F2T-14A468-AA	002-3822	186797	1	SECONDARY LOCK
3	MTRTW10	3	12048074	FBHT-14474-AA	001-1277	186191	9	TERMINALS
4	MAP_CONN	4	12048086	F0VB-14603-BA	002-1047	186408	9	CABLE SEAL
4	MAP_CONN	5	12058188	F0VB-14603-FA	002-3445	186725	1	PLUG
4	MAP_CONN	1	12020403	F1SB-14603-AA	002-1429	192109	4	CABLE SEAL
4	MAP_CONN	2	12089040	FBHT-14461-CA	001-1170	186158	3	TERMINAL MALE
4	MAP_CONN	3	12015323	F1SB-14603-AA	002-1429	192109	3	CABLE SEAL
4	MAP_CONN	1	12015323	F1SB-14603-AA	002-1429	192109	3	CABLE SEAL
4	MAP_CONN	1	12015798	FBHS-14A464-BA	002-2513	186514	1	CONN. 4 WAY
4	MAP_CONN	2	12089040	FBHT-14461-CA	001-1170	186158	4	TERMINAL
4	MAP_CONN	3	12015323	F1SB-14603-AA	002-1429	192109	4	CABLE SEAL
6	FPPCRANK	1	F0VB-14A464-EA	FW-C-2F(5)-B	002-4540	286277	1	CONN. 2 WAY
6	FPPCRANK	2	F0CB-14474-AA	001-0601	288856	2	TERMINAL	
6	FPPCRANK	3	F0CB-14468-AA	002-1004	287925	1	LOCK	
6	FPPCRANK	4	F45B-14603-EA	11520-2217	002-2340	287273	2	CABLE SEAL
7	FPP_COMM CAP	1	12015324	FBHS-14A624-CA	002-2443	186495	1	CONN. 4 WAY
7	FPP_COMM CAP	2	12089188	FBHT-14488-AA	001-1113	186115	1	TERMINAL
7	FPP_COMM CAP	3	12015323	F1SB-14603-AA	002-1429	192109	1	CABLE SEAL
7	FPP_COMM CAP	4	12010300	FBHS-14A666-DA	002-2354	186428	3	PLUG
8	CONV. TUBING	1	R62716	003-0416	210804	250	MM	CONV. BLK/GREY NYNEX SUT, I.D. 22 MM
9	CONV. TUBING	1	R64498	003-1405	210648	585	MM	CONV. BLK/GREY NYNEX SUT, I.D. 8 MM
10	CONV. TUBING	1	R64498	003-1405	210648	2225	MM	CONV. BLK/GREY NYNEX SUT, I.D. 8 MM
11	HEAT SHRINK TUBING	1	SCT#1 -1" LONG	003-1378	210556	1		HEAT SHRINK TUBING SCT #1 - 1" LG.
11	HEAT SHRINK TUBING	2	SCT#1 -2" LONG	003-1378	210556	1		HEAT SHRINK TUBING SCT #1 - 2" LG.
11	HEAT SHRINK TUBING	3	SCT#2 -2" LONG	003-1379	210557	1		HEAT SHRINK TUBING SCT #2 - 2" LG.
12	TAPE	1	ESB-M3G177-A	004-0032	199301	AS REQ'D		TAPE - POLUKEN

FPPCRANK

350 (18) GY

349 (18) DB

2200

1

1

1

1

1

1

1

1

1

1

1

1

1

1

1

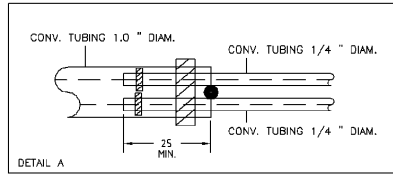
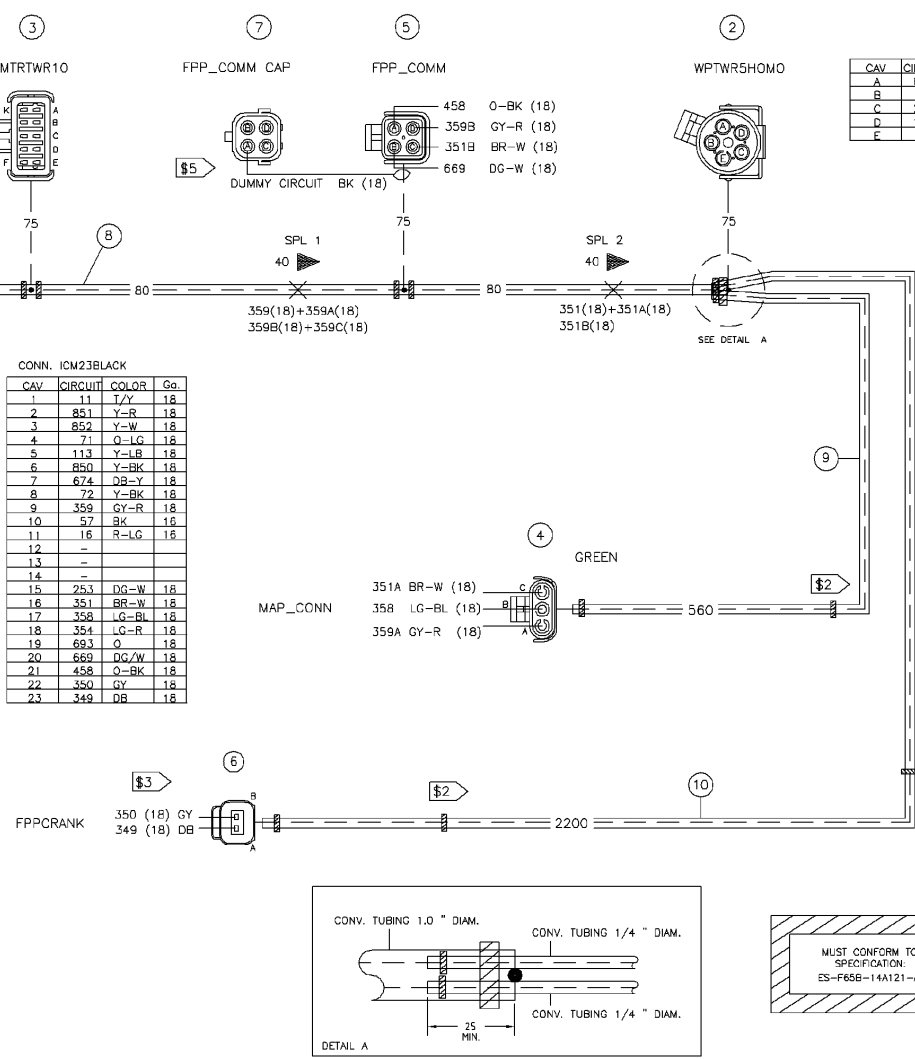
1

1

1

1

INSTALL CAP 7 IN CONN. 5



MUST CONFORM TO SPECIFICATION ES-F658-14A121-AA

REVISIONS					
REV	ZONE	DESCRIPTION	DATE	BY	APP
A		PRODUCTION RELEASE	9/24/01	AM	DR
B		CKT 674 DB-Y WAS #47 GY-LB	10/25/01	AM	DR

CAV	CIRCUIT	COLOR	Gs.
A	693	O	18
B	71	O-LG	18
C	253	DG-W	18
D	113	Y-LB	18
E	11	T-Y	18

NOTES:

- ALL WIRE IS SAE TXL TYPE
- DIMENSIONS ON MILLIMETERS
- PART NUMBER TAG TO INCLUDE ECONTROL PART NUMBER AND FORD PART NUMBER
- PLACE SPOT TAPES HALF WAY BETWEEN TAKE-OUT POINTS
- THE FOLLOWING CIRCUITS ARE TO BE TWISTED. 10 TO 15 TURNS/FOOT. 349 + 350
- ONE TURN = 360 DEGREES
- IF UNUSED CAVITIES ARE PERFORATED ACCIDENTALLY AND DIAPHRAGM IS PIERCED, CLOSE CAVITY WITH PLUG AMP 770878-1 = ORACLE 567311
- SECURE CAP TO BREAKOUT FPP_COMM. SEE DUMMY CIRCUIT DETAIL.
- REPRESENTS SPOT TAPE WITH POLUKEN TAPE ESB-M3G177-A. 20 MM WIDE AT THIS POINT. ORACLE-199301
- REPRESENTS SPLICE LOCATION.

HEAVY TRUCK SPECIALTY VEHICLE GROUP

12746 CHARRON PATH SUITE 116, SAN ANTONIO TX, 78249

DRAWN BY	DRAWING	CHECKED	APPROVED
A. MICHEL	DATE: 10/25/01	DATE: 10/25/01	DATE: 10/25/01

PART NAME: ECONTROLS, INC
4.2L ICM JUMP HARNESS
1U1L-14N118-AA

PART NO. 1283000

REV. B SCALE NONE

SHEET 1 OF 1

REFERENCE	
4.2L	
PART MUST COMPLY WITH SPECIFICATION WSS-M99P9999-A1 TO HELP SAFEGUARD HEALTH-SAFETY AND THE ENVIRONMENT	
SUBJECT TO CERTIFICATION/HOMOLOGATION YES <input type="checkbox"/> NO <input type="checkbox"/>	
CAD FILE	X
CAD TYPE	MDT5.0
D/C NODE	X
SCALE	1:1
DEPT NO.	9526
DATA IS MASTER	
DIMENSIONING & TOLERANCING IN ACCORDANCE WITH ASME Y14.5M - 1994	
MATERIAL BY VENDOR	
NAME	WIRING ASY - ICM JUMPER HARNESS
NO.	1U1L-14N118-AA
	SHT 1 OF 1

PLOT DATE: 11-13-01

DWG. SIZE A1