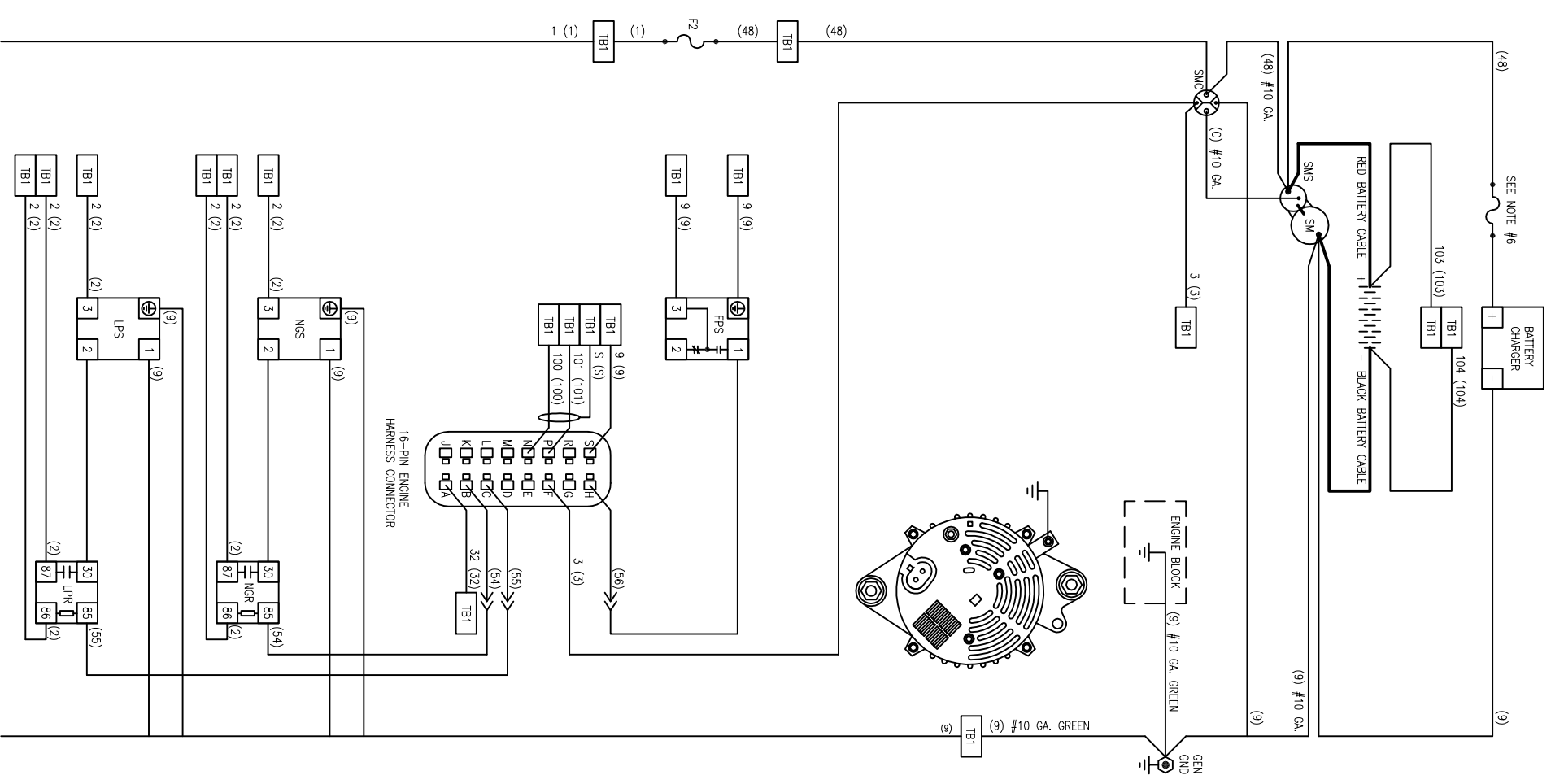
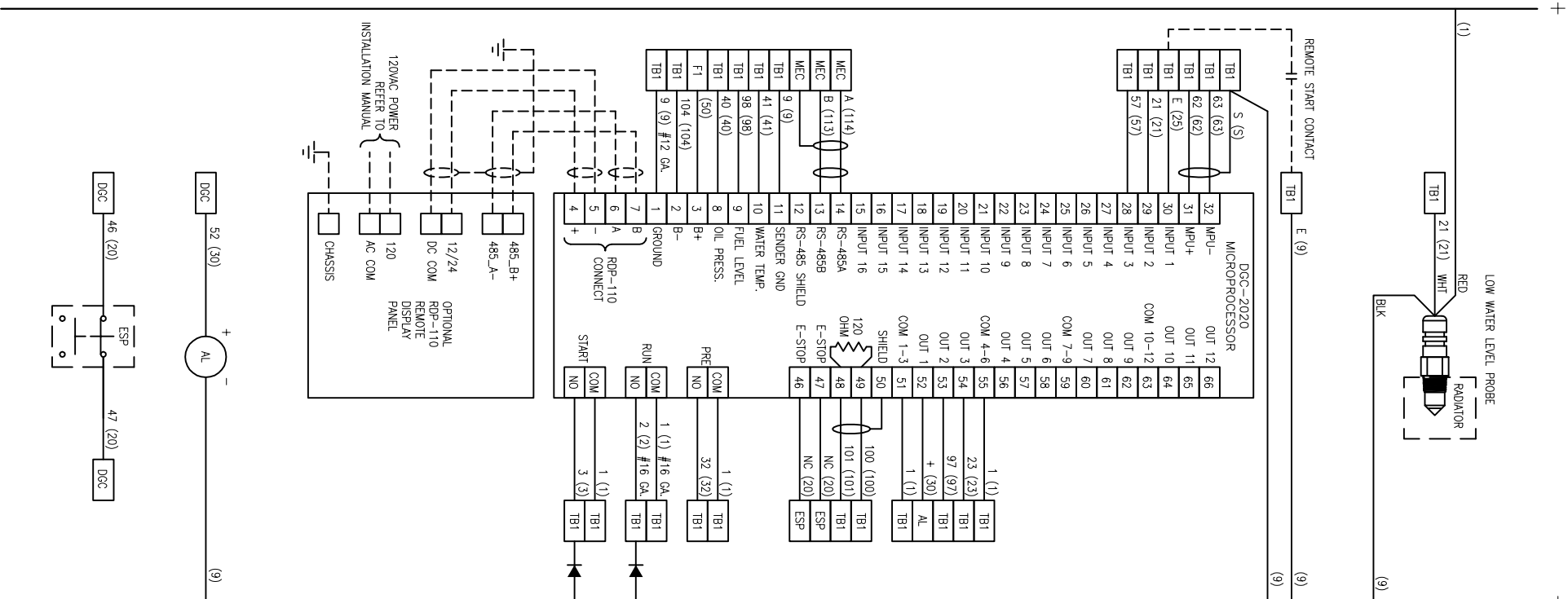
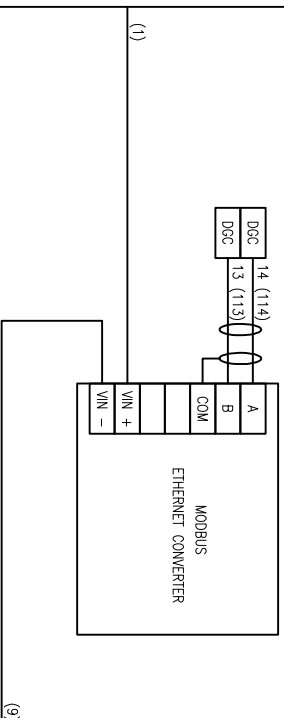
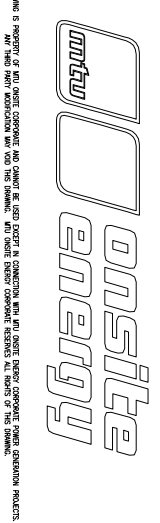


- LEGEND
- AL ALARM
 - ALT ALTERNATOR
 - BOV BLEED OFF VALVE
 - DCC DCC-2020 CONTROLLER
 - ESP EMERGENCY STOP PUSHBUTTON
 - F1 CONTROLLER FUSE ABC 5 AMP
 - F2 PANEL FUSE ABC 15 AMP
 - F3 FUEL SOLENOID
 - FPS FUEL PRESSURE SWITCH
 - GEN GENERATOR
 - GND GROUND
 - GOV GOVERNOR
 - K9 DUAL FUEL RELAY
 - LPS LP GAS SOLENOID
 - LWL LOW WATER LEVEL PROBE
 - MAG MAGNETIC PICK-UP
 - NCS NATURAL GAS SOLENOID
 - OPSS OIL PRESSURE GAUGE SENDER
 - SM STARTER MOTOR
 - SMC STARTER MOTOR COIL PILOT RELAY
 - SMS STARTER MOTOR SOLENOID
 - TB1 TERMINAL BOARD 1 (PANEL)
 - TB2 TERMINAL BOARD 2 (BREAKER ENCLOSURE)
 - TB3 TERMINAL BOARD 3 (GENERATOR OUTLET BOX)
 - WTSS WATER TEMPERATURE GAUGE SENDER



- NOTE:
1. WIRE NUMBERS ARE IN PARENTHESIS.
 2. ENGINE WIRING IS #16 GA UNLESS OTHERWISE SPECIFIED.
 3. CONTROL PANEL WIRING IS #20 GA UNLESS OTHERWISE SPECIFIED.
 4. SHORT DASHED LINES (-----) INDICATE CUSTOMER CONNECTION OR OPTIONAL EQUIPMENT.
 5. BATTERY CHARGER FUSE ONLY WHEN SUPPLIED OR REQUIRED BY CHARGER MANUFACTURER.
 6. REMOTE ANNUNCIATOR IS OPTIONAL. CHECK BILL OF MATERIAL.



****SPECIAL NOTE****

TO MINIMIZE ANY ELECTRICAL NOISE BEING INTRODUCED INTO THE ENGINE CONTROLLER, CONTROL WIRING AND AC POWER LINES NEED TO BE RUN IN SEPARATE CONDUITS.

DC LADDER DIAGRAM

DATE: 4-28-11 DRAWING SIZE: B-SIZE
 DRAWN BY: DJG SHEET: 1 OF 1

819-M-23571