



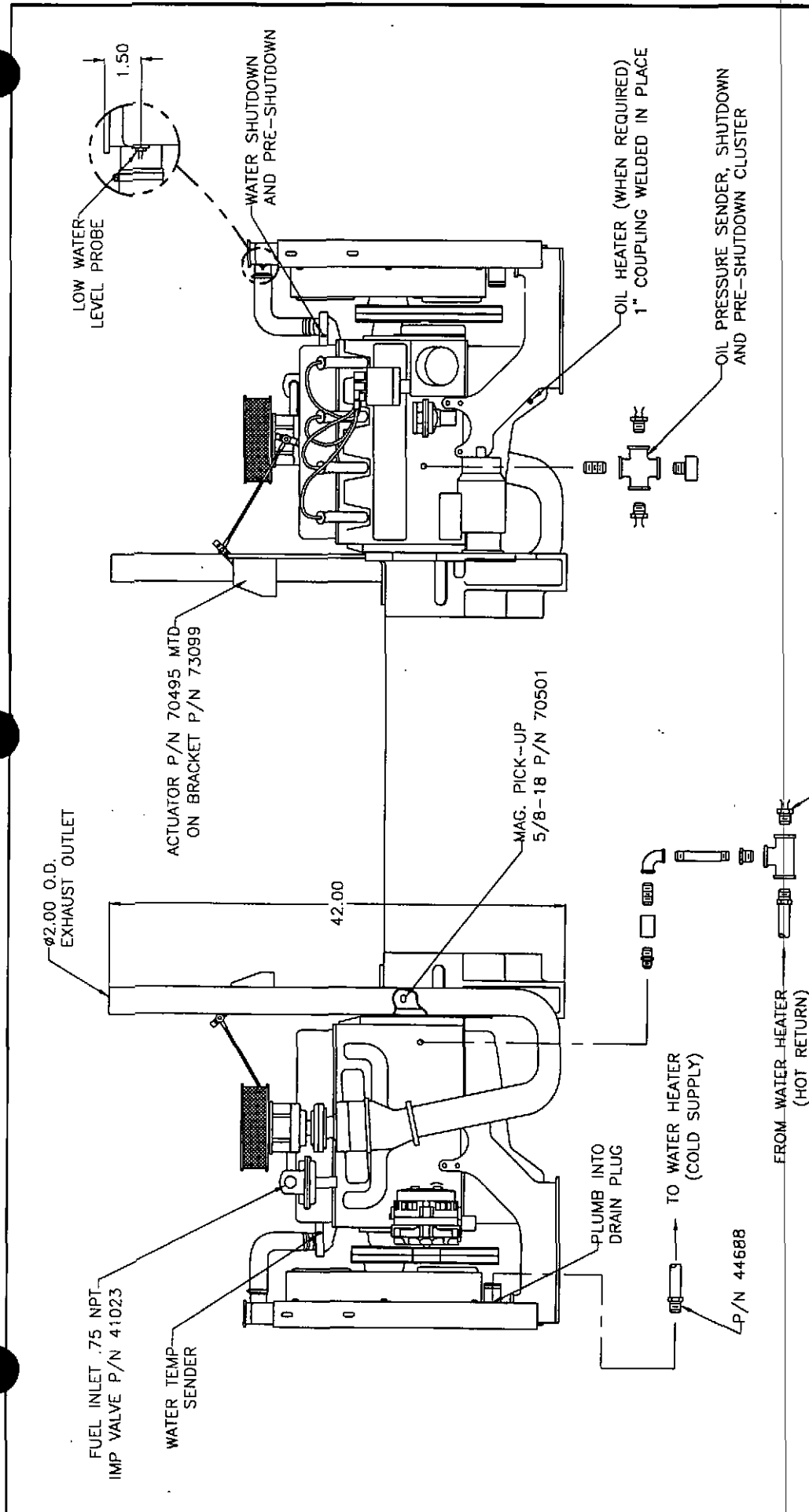
# GM Engines



3.0L

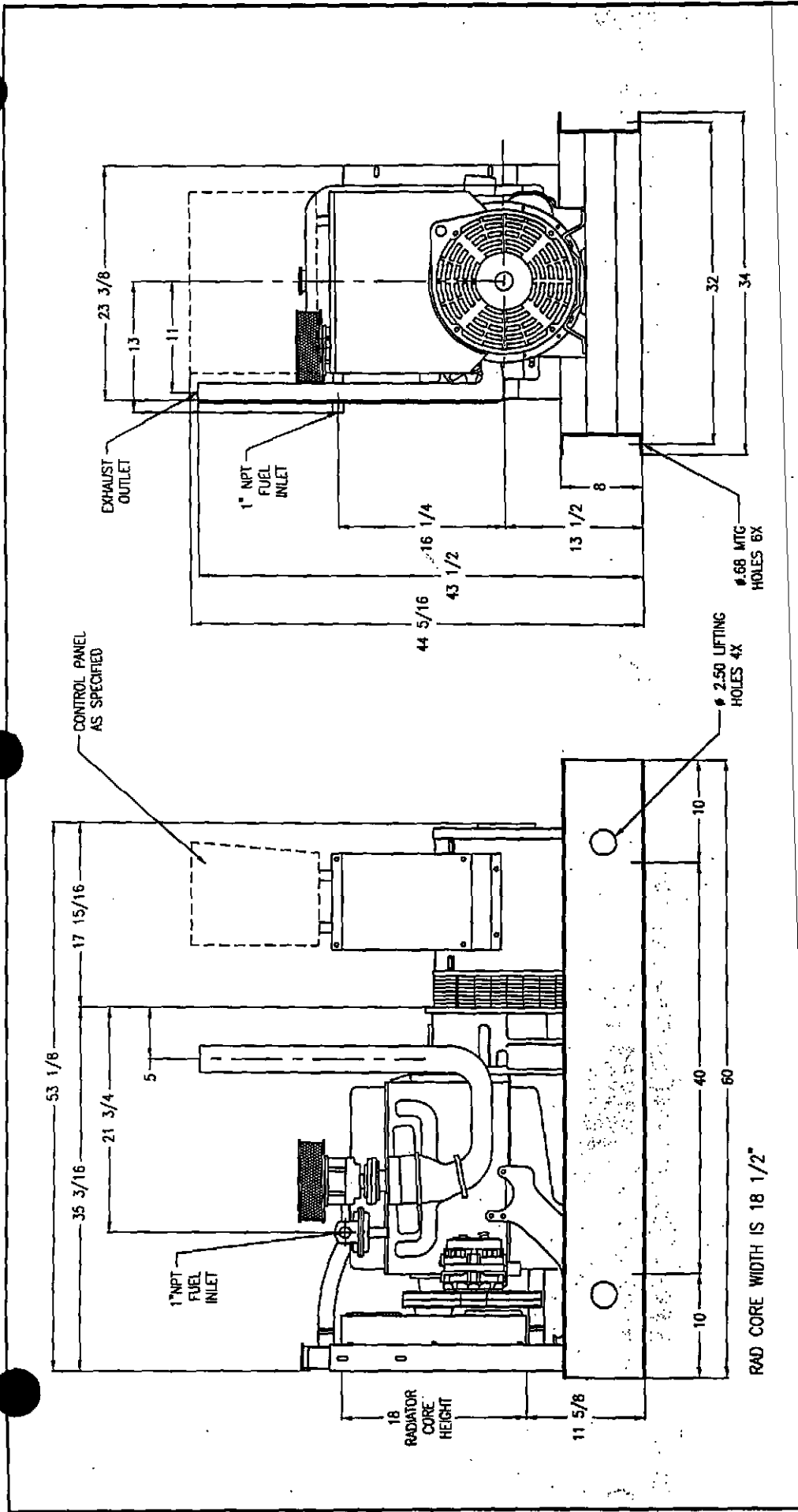
NL20F\*G4

NL25F\*G4



<b>KATOLIGHT</b> MANKATO, MINNESOTA	
3.0L GM 20-25 KW	
SIZE	TYPE NO
B	12-22-00
DO NOT SCALE	PART NO
SWITCHES & SENDERS	
DWN BY JAK SHEET 1 OF 1	

ORIGINAL

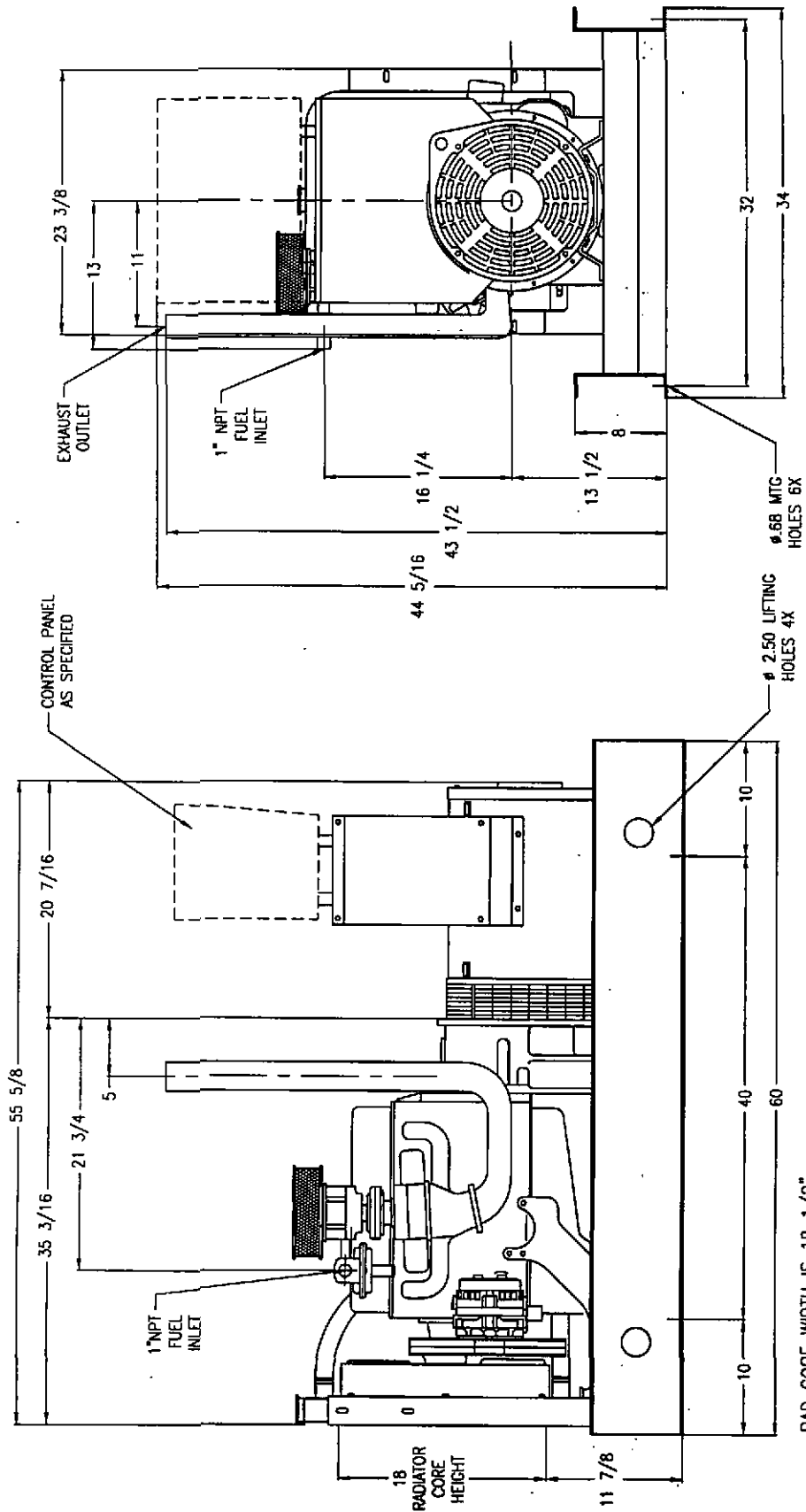


<b>KATOLIGHT</b>			
MARQUET, MINNESOTA			
ENGINE	GENERATOR	RADIATOR	HOUSING
3.0L KEM	2B2 PSL	STD W/ENG	OPU
SIZE	DATE	ENG NO	100-1170
B	4-14-99		
SCALE	.09=1	PART NO	OWN BY LJS SHEET 1 OF 1

ORIGINAL

NOTE: 1. REVISED TO SHOW ACTUAL RADIATOR FROM KEM. GMC 11/3/99

RAD CORE WIDTH IS 18 1/2"



ORIGINAL

NOTE:  
1. REVISED TO SHOW ACTUAL RADIATOR FROM KEM. GMG 11/4/99

**KATOLIGHT**

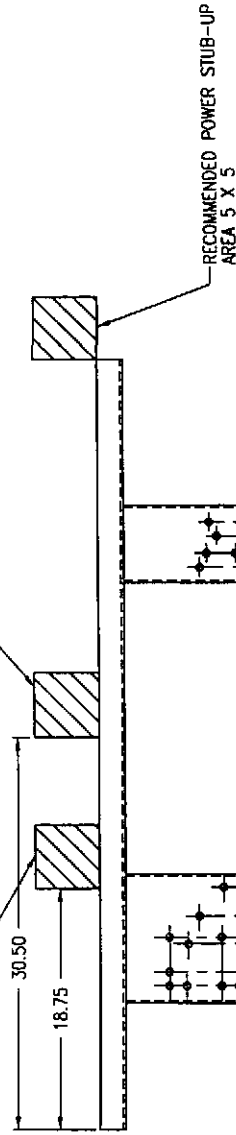
MANFATO, MINNESOTA

ENGINE	GENERATOR	RADIATOR	STD W/ENG	HOUSING
3.0L KEM	283 PSL			OPU
SIZE	DATE	DMG NO	100-1171	
B	4-14-99			
SCALE .09=1	PART NO	DMN BY LJS SHEET 1 OF 1		

ORIGINAL

RECOMMENDED FUEL STUB-UP  
AREA FOR GM GAS ENGINES 5" x 5"

RECOMMENDED FUEL STUB-UP  
AREA FOR G2300 AND  
4.236 & 14.236 5" x 5"



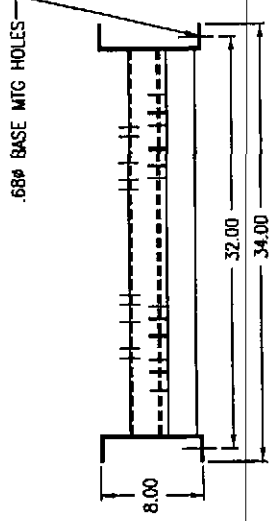
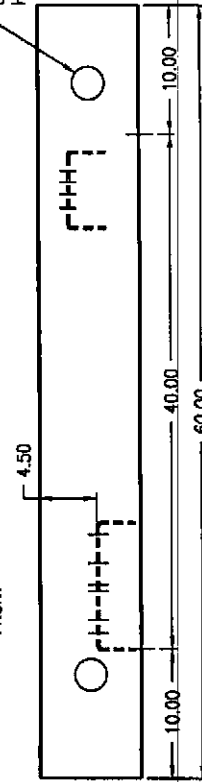
RECOMMENDED POWER STUB-UP  
AREA 5" x 5"

RECOMMENDED FUEL STUB-UP  
AREA FOR 4B13.9G 5" x 5"

RECOMMENDED FUEL STUB-UP  
AREA FOR G1600 5" x 5"

LIFTING  
HOLES 4X

FRONT



APPROX. WT. 116#

**KATOLIGHT**

WABASH, MINNESOTA

ENGINE	GENERATOR	RADIATOR	HOUSING
4 CYL ENG	280, 360	STD W/ENG	GPU
SIZE	DATE	DWG NO	
B	2-10-97	102-2004	
SCALE .12=1	PART NO	DWN BY MRL	SHEET 1 OF 1

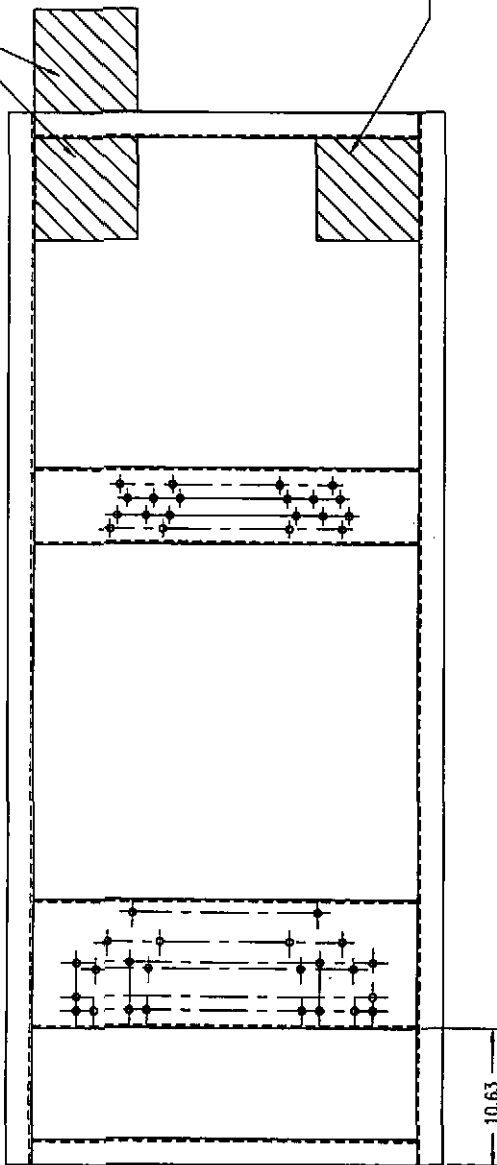
ENGINES: HERCULES PERKINS CUMMINS GM  
G1600 4.236 4B13.9G 3.0L  
G2300 14.236

REVISION: 1. ADDED TMD 20 ENGINE MTG. HOLES AND ADDED  
EXTRA VIB. MOUNT HOLES 1-8-98 LJS  
2. RAISED ALL CROSS MTG CHANNELS 1/2" 5-8-00 JAK  
3. MOVED GM FUEL STUB-UP TO OPPOSITE SIDE 11-15-00 JAK

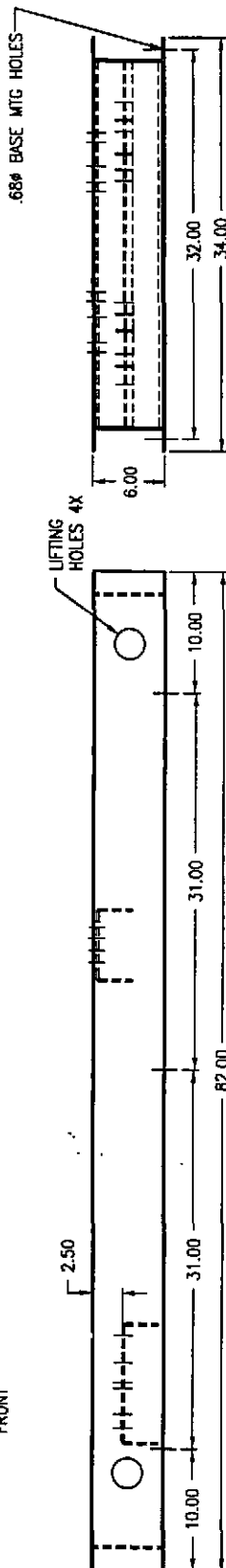
NOTES:  
1. FUEL STUB-UP AREA NOT REQUIRED  
WHEN USING SUB-BASE FUEL TANK

RECOMMENDED POWER  
STUB-UP AREA 8 x 8

RECOMMENDED FUEL  
STUB-UP AREA 8 x 8



FRONT



APPROX. WT. 185#

**KATOLIGHT**

MAHWATO, MINNESOTA

ENGINE	GENERATOR	RADIATOR	HOUSING
---	280, 360	STD W/ENG	---
SIZE	DATE	DWG NO	102-2164-A
B	1-18-99		
SCALE	.12=1	PART NO	DWN BY LJS
			SHEET 1 OF 1

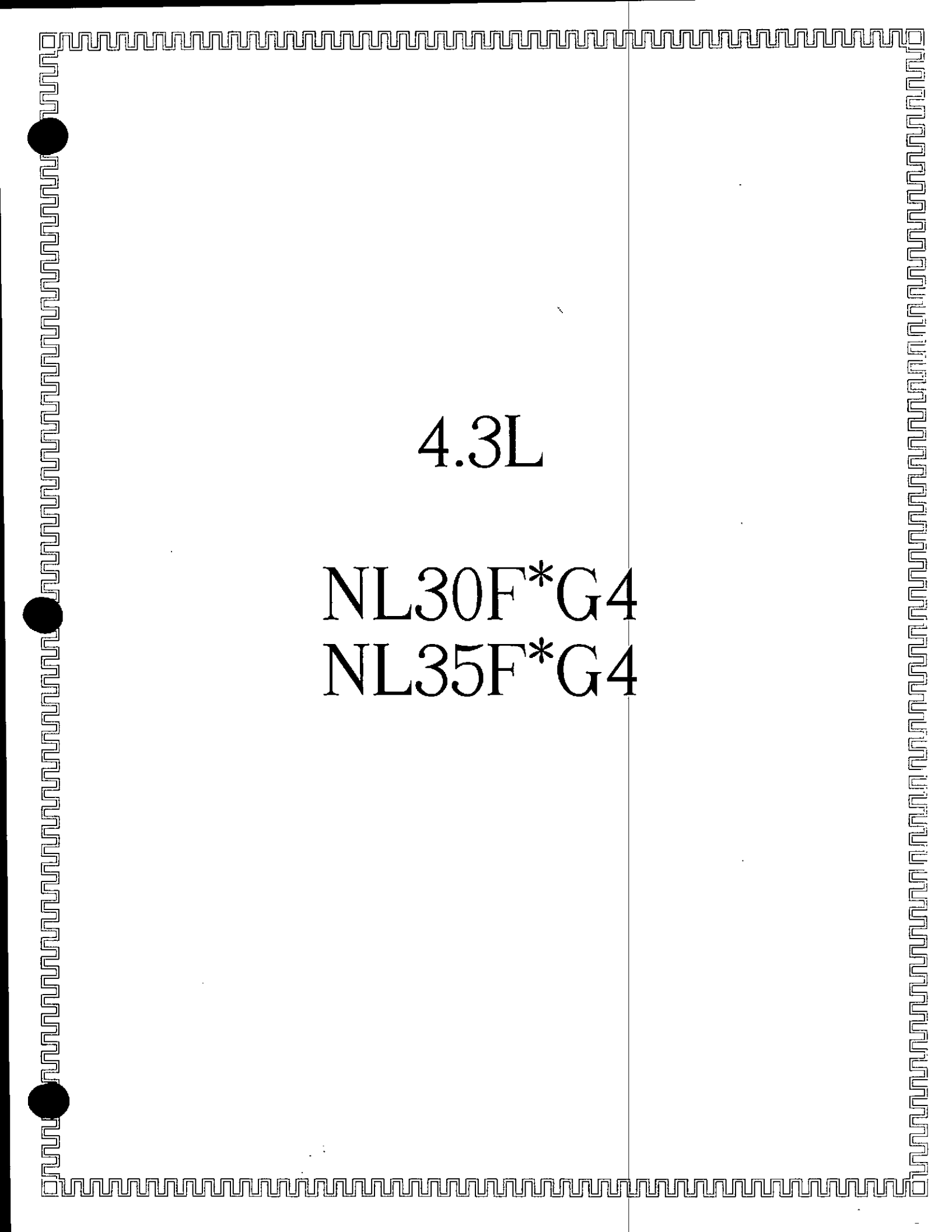
HOUSINGS: HSG-106  
HSG-206  
HSG-306

ENGINES: HERCULES PERKINS CUMMINS GM  
G1600 4B13.9G 3.0L  
G2300 T4.236 4.3L

**ORIGINAL**

NOTES:  
1. FUEL STUB-UP AREA NOT REQUIRED WHEN USING SUB-BASE FUEL TANK.  
2. POWER STUB-UP MAYBE LOCATED INSIDE THE HOUSING ON GASEOUS UNITS ONLY. EXCEPTION FOR DIESEL UNITS WHEN USING SUB-BASE FUEL TANK W/ STUB-UP AREA THRU TANK. ANY OTHER APPLICATIONS, STUB-UP IS OUTSIDE OF HOUSING.

REVISION:  
1. RAISED ALL CROSS MTG CHANNELS 1/2" 5-2-00 JAK  
2. MOVED STUB-UPS TO THE INSIDE 7-28-00 JAK  
3. ADDED POWER STUB-UP TO OUTSIDE 9-25-00 JAK  
4. ADDED CENTER MTG HOLE 10-31-00 SAA



4.3L

NL30F\*G4  
NL35F\*G4

WATER PRE-SHUTDOWN  
MTD IN MANIFOLD

WATER SHUTDOWN MTD  
IN INTAKE MANIFOLD

WATER TEMP SENDER  
MTD IN THERMOSTAT SPACER

OIL PRESSURE SENDER,  
SHUTDOWN AND PRE-SHUTDOWN

LOW WATER  
LEVEL PROBE



FUEL INLET .75 NPT  
IMP VALVE P/N 41023

ACTUATOR P/N 70495 MTD  
ON BRACKET P/N 71147

Ø2.00 O.D.  
EXHAUST OUTLET

MAG PICK-UP  
5/8-18 P/N 70501

44.00

OIL HEATER (WHEN REQUIRED)  
2-1/2" ALUM. HALF COUPLINGS  
WELDED IN PLACE (THERMOSTAT  
SENSOR HIGHER THAN PROBE)

FROM WATER HEATER  
(HOT RETURN)

LOW WATER TEMP

TO WATER HEATER  
(COLD SUPPLY)

ORIGINAL

**KATOLIGHT**

MANFACD. MINNESOTA

4.3L GM 30-35 KW

SIZE DATE

B

12-28-00

TOUG NO

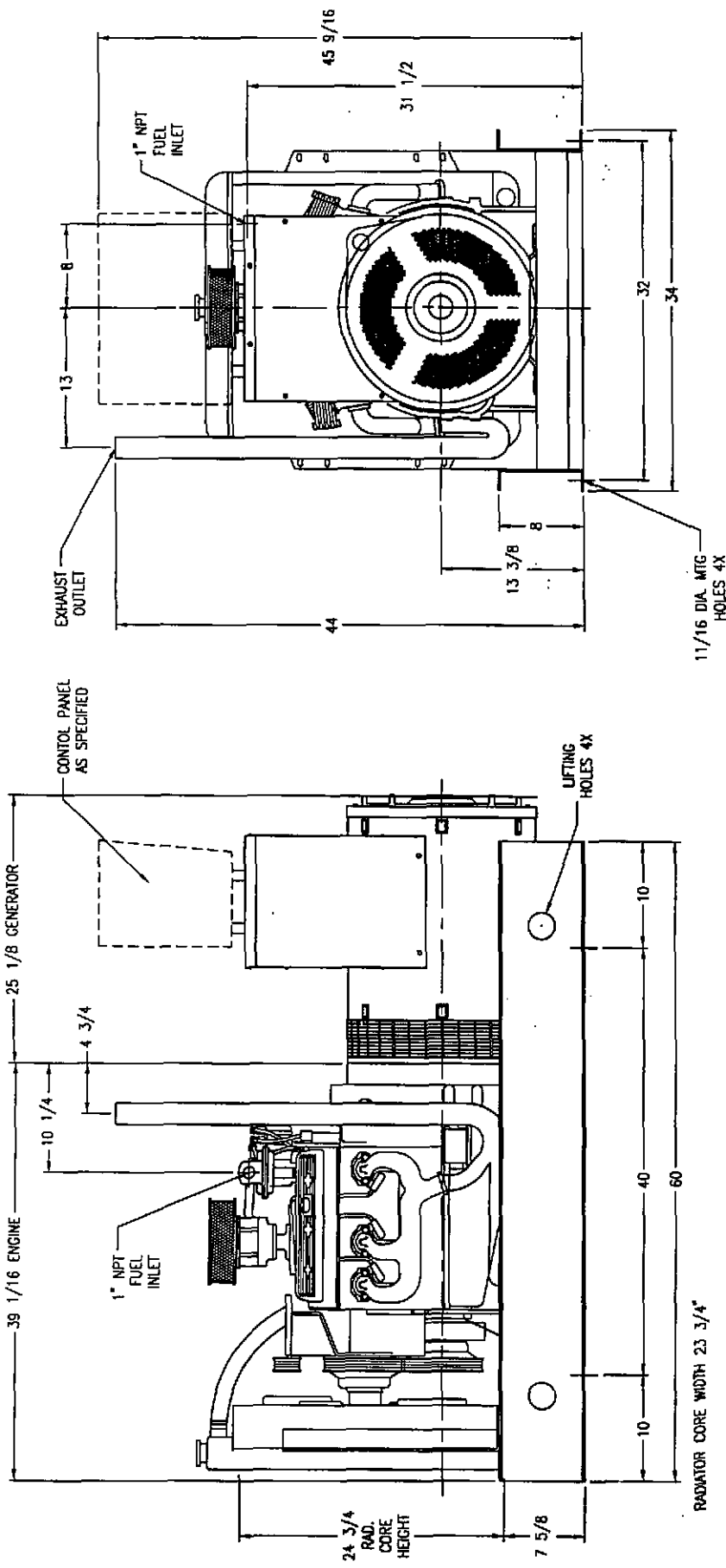
SWITCHES & SENDERS

DO NOT SCALE

PART NO

DWN BY JAK

SHEET 1 OF 1

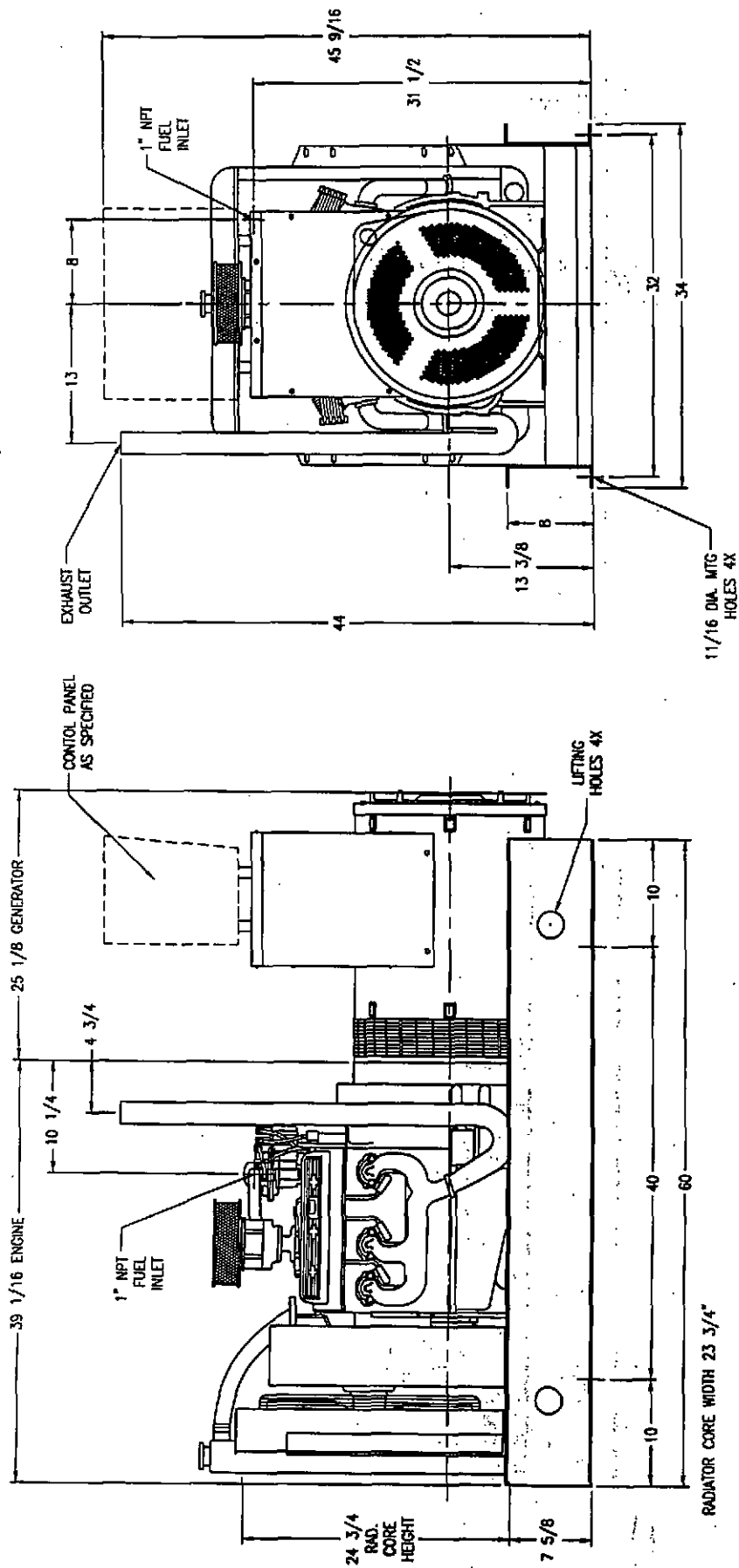


ORIGINAL

NOTE:  
1. REVISED TO SHOW ACTUAL RADIATOR FROM KEM. GMG 11/4/99

**KATOLIGHT**  
MANKATO, MINNESOTA

ENGINE	GENERATOR	RADIATOR	HOUSING
4.3L KEM	361PSL	STD W/ENG	OPU
SIZE	DATE	DWG NO	
B	5-5-99	100-1172	
SCALE	PART NO	DWG BY	SHEET 1 OF 1
		SKB	



ORIGINAL

NOTE:  
 1. REVERSE TO SHOW ACTUAL RADIATOR FROM KEM. GNG 11/3/99

**KATOLIGHT**

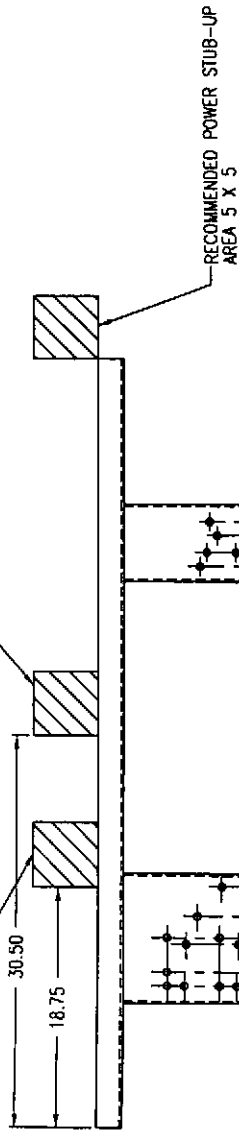
MINNETONKA, MINNESOTA

ENGINE	GENERATOR	RADIATOR	HOUSING
4.3L KEM	361PSL	STD W/ENG	OPU
SIZE	DATE	DWG NO	
B	5-5-99	100-1173	
SCALE	PART NO	DWN BY	SHEET 1 OF 1
		SKB	

ORIGINAL

RECOMMENDED FUEL STUB-UP  
AREA FOR GM GAS ENGINES 5" x 5"

RECOMMENDED FUEL STUB-UP  
AREA FOR G2300 AND  
4.236 & T4.236 5" x 5"



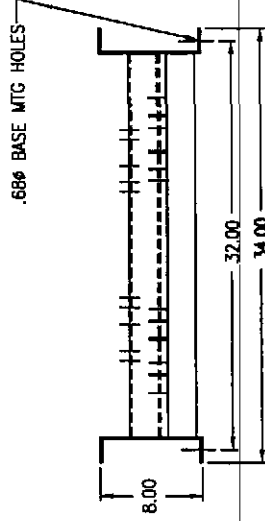
RECOMMENDED POWER STUB-UP  
AREA 5 X 5

RECOMMENDED FUEL STUB-UP  
AREA FOR 4B13.9G 5" x 5"

RECOMMENDED FUEL STUB-UP  
AREA FOR G1600 5" x 5"

LIFTING  
HOLES 4X

FRONT



APPROX. WT. 116#

**KATOLIGHT**

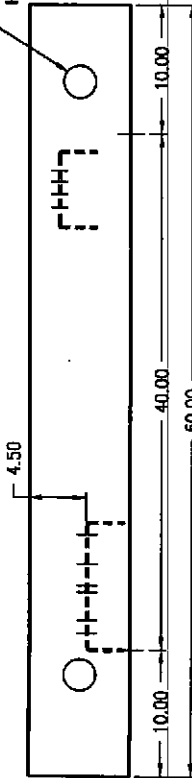
MINNETONKA, MINNESOTA

ENGINE	GENERATOR	RAUNTOR	HOUSING
4 CYL ENG	280, 360	STD W/ENG	OPU
SIZE	DATE	DWG NO	
B	2-10-97	102-2004	
SCALE	.12=1	PART NO	DWG BY MRL SHEET 1 OF 1

ENGINES: HERCULES PERKINS CUMMINS GM  
G1600 4.236 4B13.9G 3.0L  
G2300 T4.236 4.3L

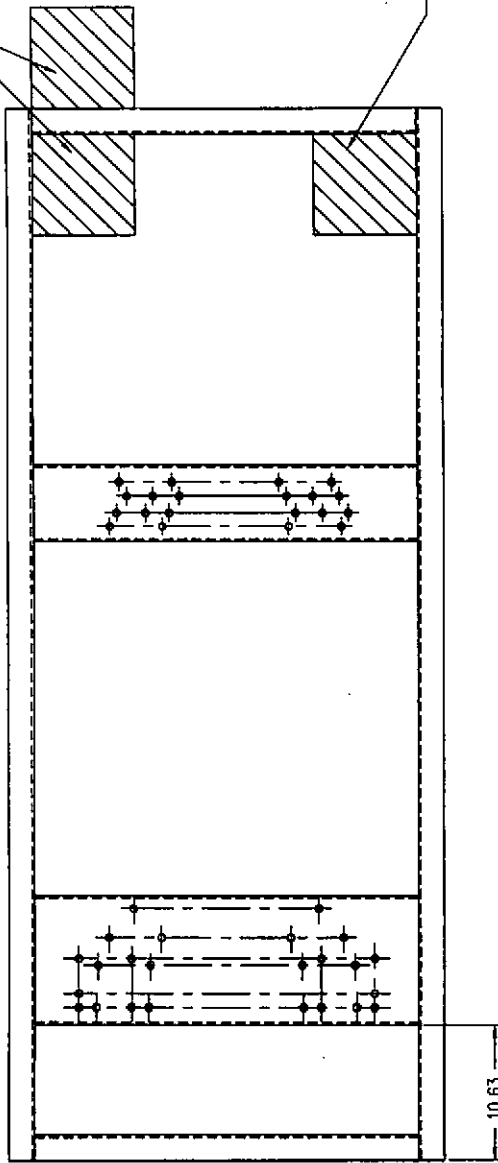
REVISION: 1. ADDED TMD 20 ENGINE MTG. HOLES AND ADDED  
EXTRA VIB MOUNT HOLES 1-8-98 LJS  
2. RAISED ALL CROSS MTG CHANNELS 1/2" 5-8-00 JAK  
3. MOVED GM FUEL STUB-UP TO OPPOSITE SIDE 11-15-00 JAK

NOTES:  
1. FUEL STUB-UP AREA NOT REQUIRED  
WHEN USING SUB-BASE FUEL TANK

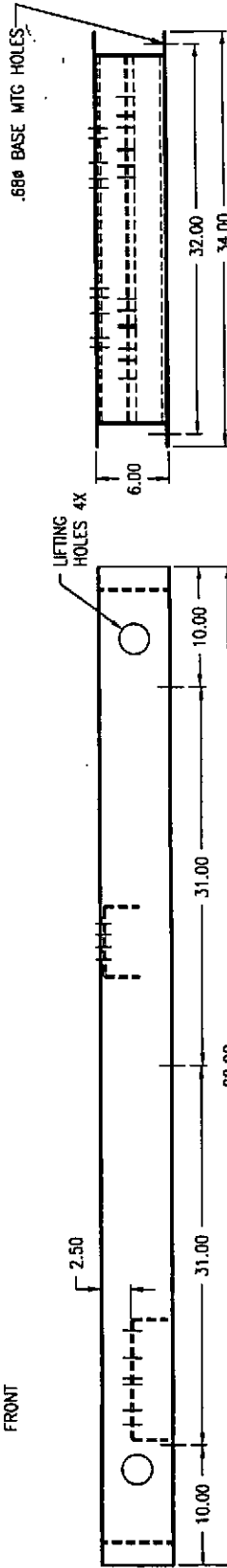


RECOMMENDED POWER  
STUB-UP AREA 8 x 8

RECOMMENDED FUEL  
STUB-UP AREA 8 x 8



FRONT



APPROX WT. 185#

**KATOLIGHT**

MINNETONKA, MINNESOTA

ENGINE	GENERATOR	RADIATOR	HOUSING
	280, 360	STD W/ENG	
SIZE	DATE	DWG NO	
B	1-18-99	102-2164-A	
SCALE	1/2"=1"	PART NO	DRAWN BY LJS SHEET 1 OF 1

HOUSINGS: HSG-106  
HSG-206  
HSG-306

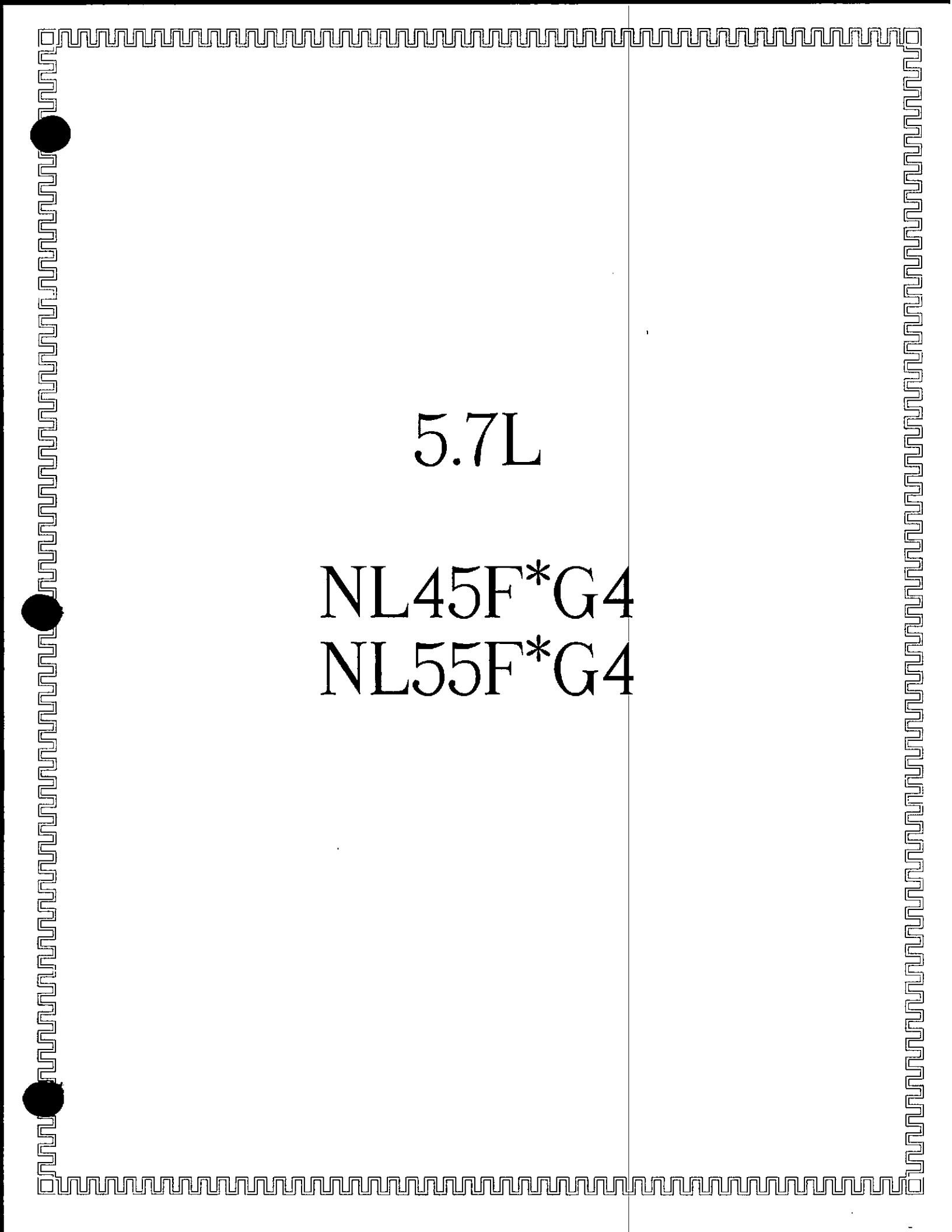
ENGINES: HERCULES PERKINS CUMMINS GM  
G1600 4.236 48T3.9C 3.0L  
G2500 14.236 4.3L

REVISION:

1. RAISED ALL CROSS MTG CHANNELS 1/2" 5-2-00 JAK
2. MOVED STUB-UPS TO THE INSIDE 7-28-00 JAK
3. ADDED POWER STUB-UP TO OUTSIDE 9-25-00 JAK
4. ADDED CENTER MTG HOLE 10-31-00 SMA

**ORIGINAL**

- NOTES:
1. FUEL STUB-UP AREA NOT REQUIRED WHEN USING SUB-BASE FUEL TANK.
  2. POWER STUB-UP MAYBE LOCATED INSIDE THE HOUSING ON CASEOUS UNITS ONLY. EXCEPTION FOR DIESEL UNITS WHEN USING SUB-BASE FUEL TANK W/ STUB-UP AREA THRU TANK. ANY OTHER APPLICATIONS, STUB-UP IS OUTSIDE OF HOUSING.



5.7L

NL45F\*G4

NL55F\*G4

FROM WATER HEATER  
TO ENGINE BLOCK  
(HOT RETURN)

WATER SHUTDOWN  
AND PRE-SHUTDOWN  
MTD TO INTAKE MANIFOLD

WATER TEMP SENDER MTD  
TO THERMOSTAT SPACER

FUEL INLET 1.00 NPT  
IMP VALVE P/N 41011  
OPPOSITE SIDE

ACTUATOR P/N 70496 MTD  
ON BRACKET P/N 71147

Ø2.00 O.D.  
EXHAUST OUTLET

OIL PRESSURE SENDER,  
SHUTDOWN AND PRE-SHUTDOWN

MAG PICK-UP  
5/8-18 P/N 70501

46.00

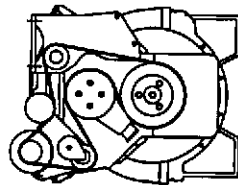
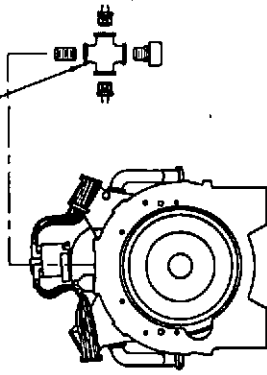
OIL HEATER (WHEN REQUIRED)  
1" COUPLING WELDED IN PLACE  
(OPPOSITE SIDE)

LOW WATER TEMP

TO WATER HEATER  
(COLD SUPPLY)

LOW WATER LEVEL PROBE  
(OPPOSITE SIDE)

1.50



ORIGINAL

**KATOLIGHT**

MANHATT, MINNESOTA

5.7L GM 45-55 KW

LONG NO

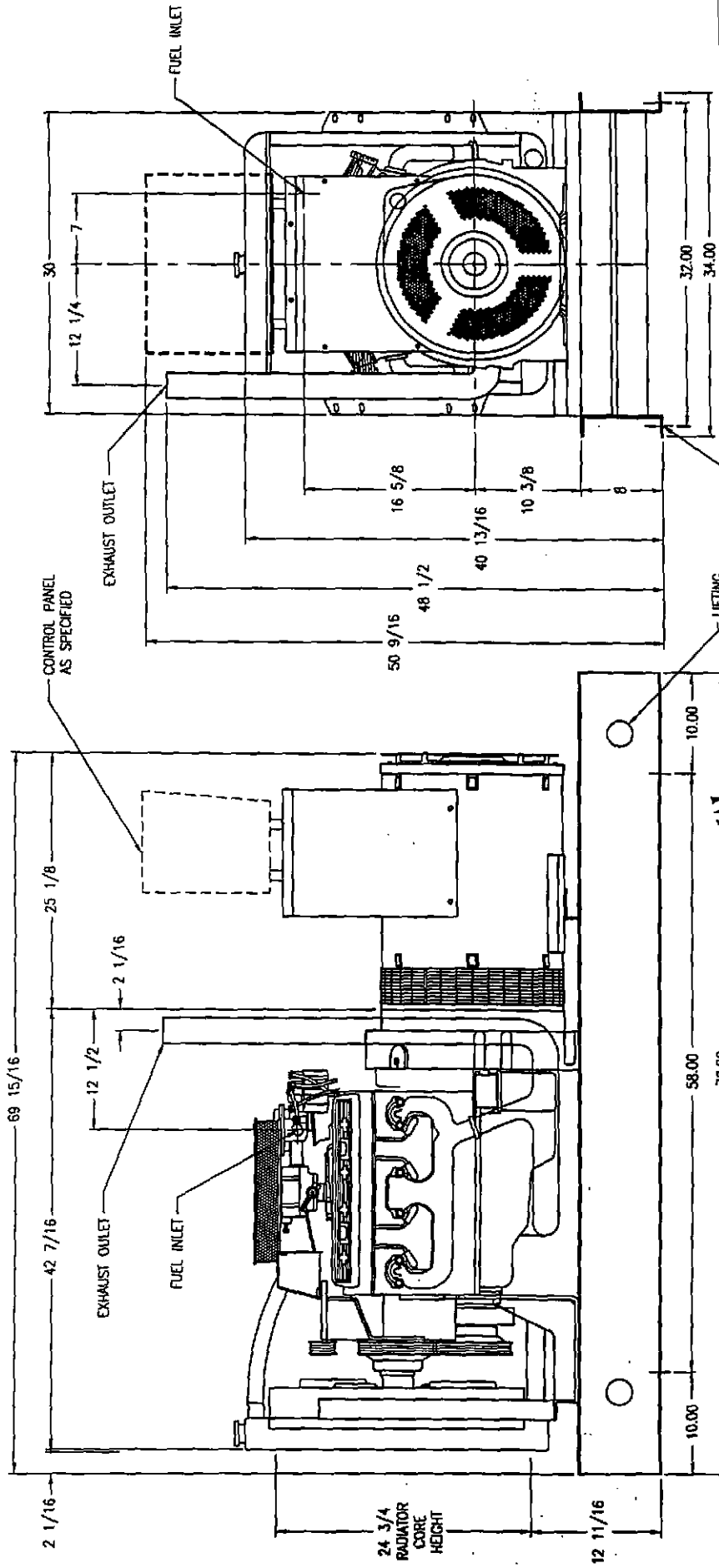
DATE

B 12-27-00

SWITCHES & SENDERS

PART NO

OWN BY JAK SHEET 1 OF 1

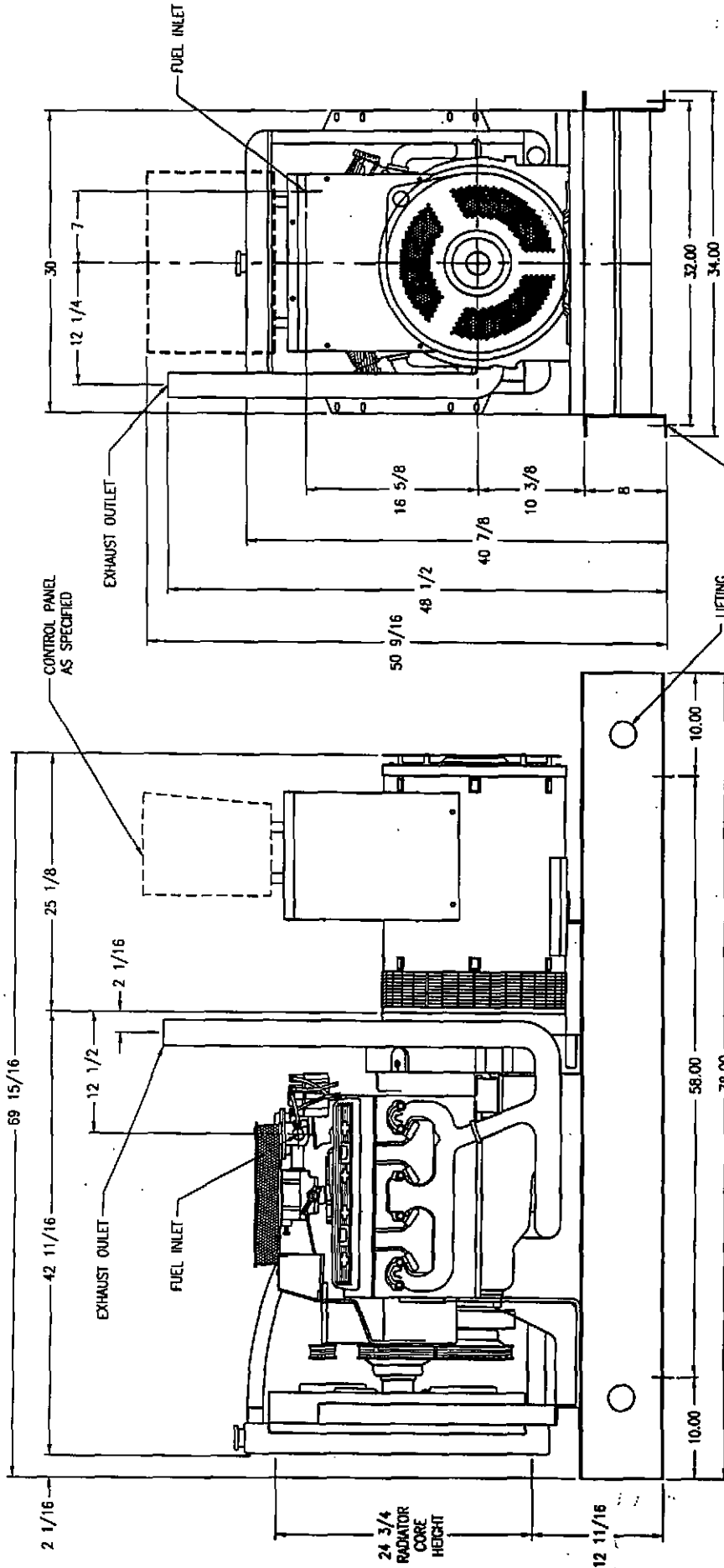


**KATOLIGHT**  
MANKATO, MINNESOTA

ENGINE	GENERATOR	RADIATOR	HOUSING
GM 5.7L KEM	361 PSL	STD W/ENG	OPU
SIZE	DATE	DWG NO	100-1174
B	5-5-99		
SCALE	PART NO	DWG BY	SHEET 1 OF 1

**ORIGINAL**

NOTE:  
1. REVISED TO SHOW ACTUAL RADIATOR FROM KEM. GMC 11/3/99



RADIATOR CORE WIDTH IS 23 3/4"

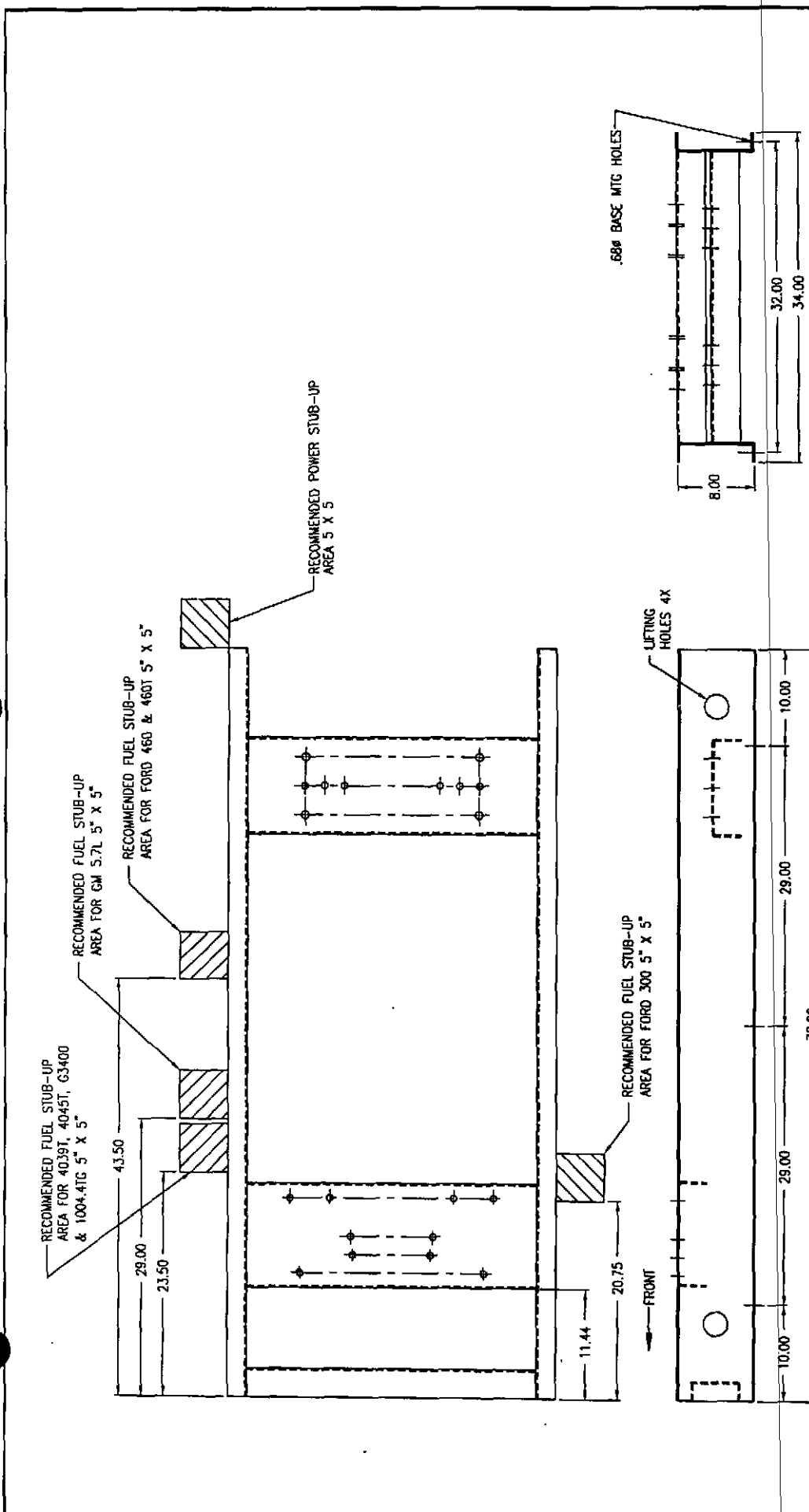
ORIGINAL

NOTE: 1. REVISED TO SHOW ACTUAL RADIATOR FROM KEM. GNG 11/3/99

**KATOLIGHT**

MINNETONKA, MINNESOTA

ENGINE	GENERATOR	RADIATOR	HOUSING
GM 5.7L KEM	361 PSL	STD W/ENG	OPU
SIZE	DATE	DWG NO	
B	5-5-99	100-1175	
SCALE	PART NO	DWN BY	SHEET 1 OF 1



**KATOLIGHT**  
MANKATO, MINNESOTA

ENGINE	GENERATOR	RADIATOR	HOUSING
	360,430	STD W/ENG	OPU
SIZE	DATE	ENG NO	102-2006
B	2-10-97		
SCALE	.12=1	PART NO	OWN BY MRL SHEET 1 OF 1

ORIGINAL

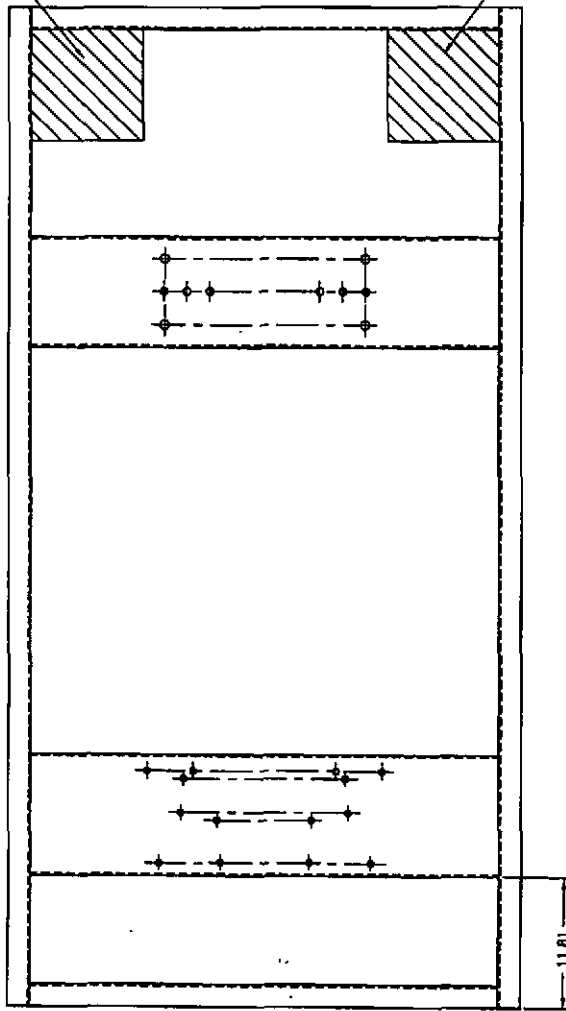
ENGINES: FORD GM PERKINS  
460 7.4L 1004.4TG  
460T 5.7L 4.3L

REVISIONS: 1. ADDED FRONT CHL 5-8-97 MRL  
2. CHANGED ENGINE HOLE PATTERN 3-17-99 SKB  
3. ADDED CENTER MITG HOLES 1-9-01 SMA

NOTES:  
1. FUEL STUB-UP AREA NOT REQUIRED WHEN USING SUB-BASE FUEL TANK

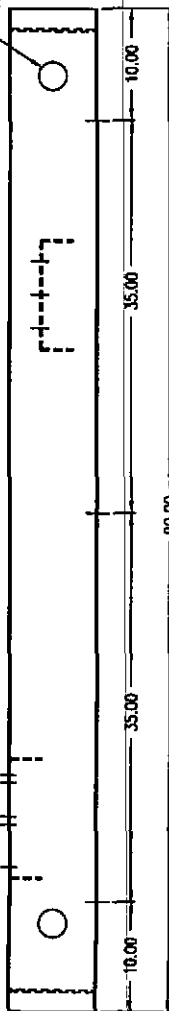
RECOMMENDED POWER  
STUB-UP AREA 10 x 10

RECOMMENDED FUEL  
STUB-UP AREA 10 x 10

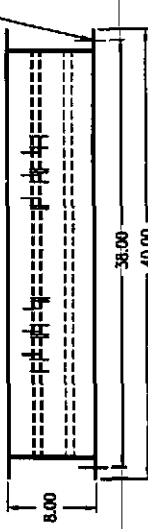


FRONT

LIFTING HOLES 4X



.684 BASE MTG HOLES



ORIGINAL

**KATOLIGHT**

HAWKWOOD, MINNESOTA

ENGINE	GENERATOR	RADIATOR	HOUSING
	360, 430	STD W/ENG	
SIZE	DATE	DWG NO	102-2007-A
B	2-10-97		
SCALE	.12=1	PART NO	OWN BY MRL SHEET 1 OF 1

ENGINES: HERCULES 40 FORD GM PERKINS HOUSINGS: HSG-103  
 G3400 4039T 460 5.7L 1004-4TG HSG-203  
 4043T 460T HSG-303

- REVISIONS: 1. MADE 6" NARROWER 3-24-97 MRL  
 2. MADE ENGINE CHANNEL FLUSH WITH TOP  
 OF BASE 12-17-97 LJS  
 3. MOVED STUB-UPS TO THE INSIDE 7-28-00 JAK

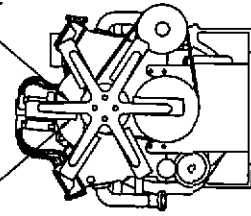
NOTES:  
 1. FUEL STUB-UP AREA NOT REQUIRED  
 ... WHEN USING SUB-BASE FUEL TANK

7.4L

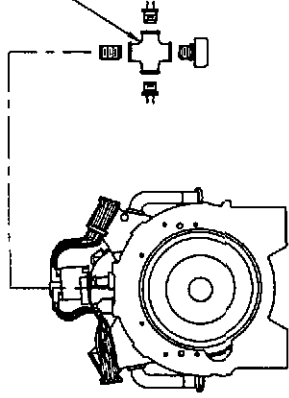
NL80F\*G4

WATER SHUTDOWN  
AND PRE-SHUTDOWN  
MTD IN INTAKE MANIFOLD

WATER TEMP SENDER  
MTD TO THERMOSTAT SPACER



OIL PRESSURE SENDER,  
SHUTDOWN AND  
PRE-SHUTDOWN



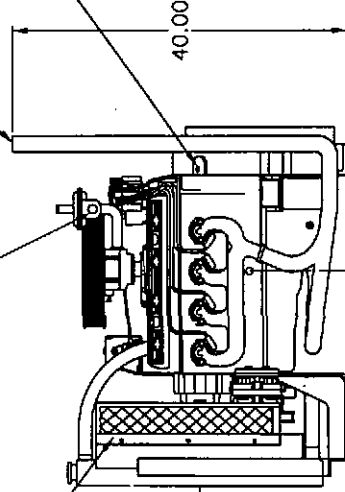
ACTUATOR P/N 70496 MTD  
ON BRACKET P/N 70074

FUEL INLET 1.50 NPT  
IMP VALVE P/N 41025

FAN GUARD  
P/N 70979

Ø2.50 O.D.  
EXHAUST OUTLET

MAG PICK-UP  
5/8-18 P/N 70501



40.00



LOW WATER  
LEVEL PROBE

FROM WATER HEATER  
(HOT RETURN)

LOW WATER TEMP

TO WATER HEATER  
(COLD SUPPLY)

ORIGINAL

**KATOLIGHT**

MANKATO, MINNESOTA

7.4L NON-TURBO GM 70 KW

SIZE DATE

B

12-28-00

REV NO

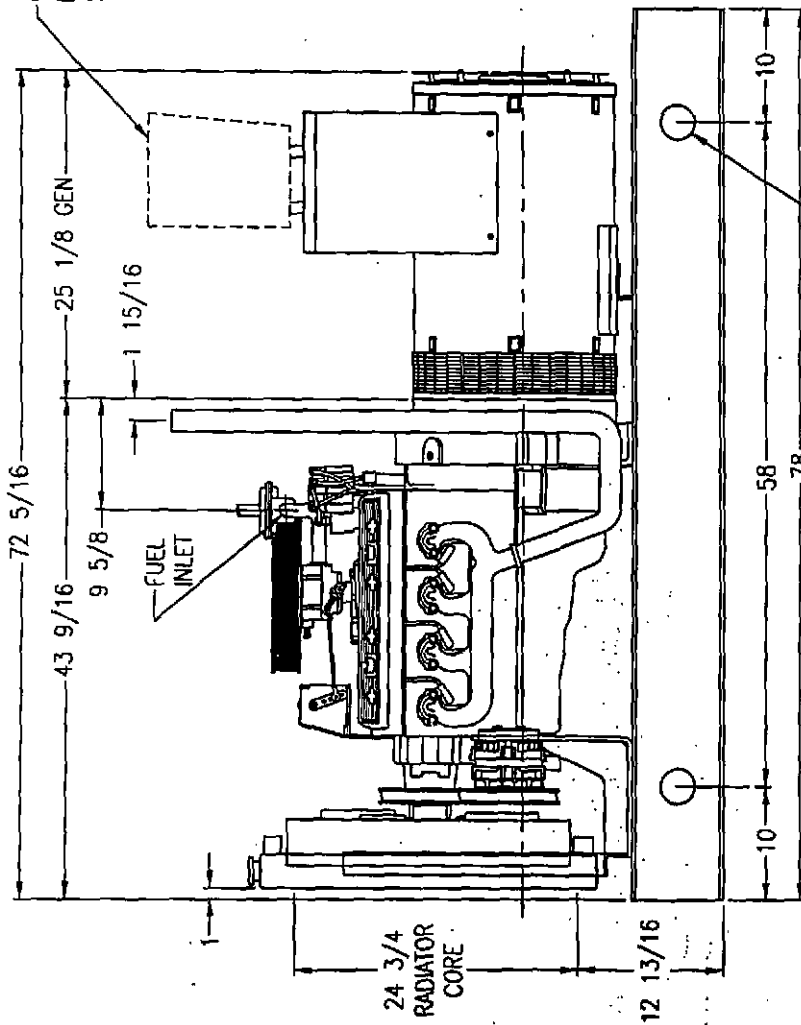
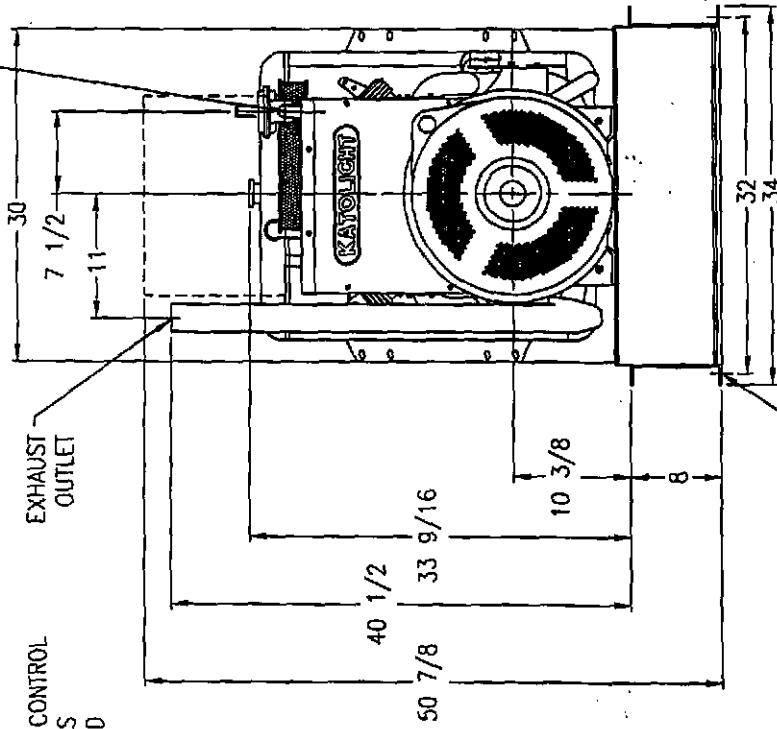
SWITCHES & SENDERS

DO NOT SCALE

PART NO

DWN BY JAK SHEET 1 OF 1

1 1/2" NPT FUEL INLET



RADIATOR CORE WIDTH 23 3/4"

ORIGINAL

ø2.50 LIFTING HOLES 4X

11/16 DIA MTG HOLES 4X

**KATOLIGHT**  
MANKATO, MINNESOTA

ENGINE	GENERATOR	RADIATOR	HOUSING
GM 7.4L KEM	362 PSL	STD W/ENG	OPU
SIZE	DATE	DMG NO	100-1176
B	5-5-99		
SCALE .08=1	PART NO	OWN BY	LJS SHEET 1 OF 1

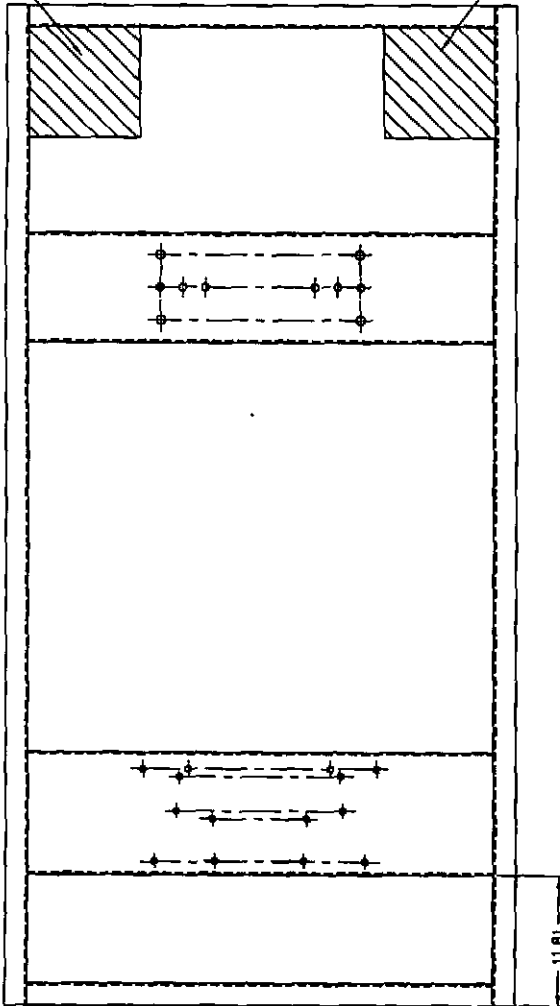
- REVISIONS:
1. CHANGED FUEL INLET TO 1 1/2" NPT 8-31-99 SKB
  2. REVISED TO SHOW ACTUAL RADIATOR FROM KEM, GMG 11/5/99



RECOMMENDED POWER  
STUB-UP AREA 10 x 10

RECOMMENDED FUEL  
STUB-UP AREA 10 x 10

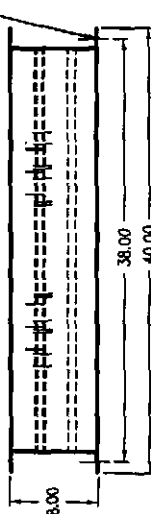
ORIGINAL



FRONT

LIFTING  
HOLES 4X

.684 BASE MTC HOLES



ENGINES: HERCULES JD FORD GM PERKINS HOUSINGS: HSG-103  
G3400 4038T 460 5.7L 1004,4TC 4045T 460T HSG-203  
HSG-303

- REVISIONS: 1. MADE 6" NARROWER, 3-24-97 MRL  
2. MADE ENGINE CHANNEL FLUSH WITH TOP  
OF BASE 12-17-97 LJS  
3. MOVED STUB-UPS TO THE INSIDE 7-28-00 JAK

- NOTES:  
1. FUEL STUB-UP AREA NOT REQUIRED  
WHEN USING SUB-BASE FUEL TANK

**KATOLIGHT**

MANKATO, MINNESOTA

ENGINE GENERATOR 360,430 RADIATOR STD W/ENG HOUSING

SIZE DATE 2-10-97 DWG NO 102-2007-A

SCALE 1/2"=1" PART NO DWN BY MRL SHEET 1 OF 1



7.4LT

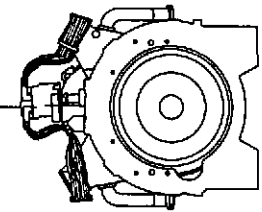
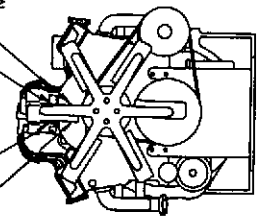
NL85F\*G4  
NL100F\*G4

OIL COOLER SUPPLY

WATER SHUTDOWN AND PRE-SHUTDOWN MTD IN INTAKE MANIFOLD

WATER TEMP SENDER MTD IN THERMOSTAT HSG

TO WATER HEATER

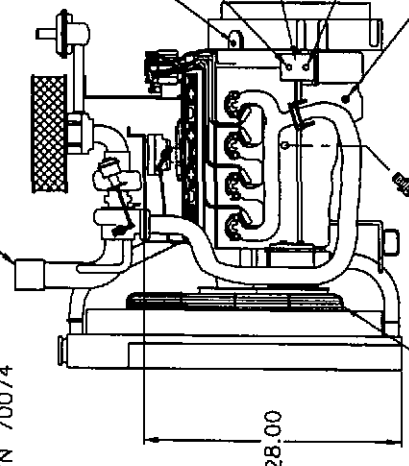
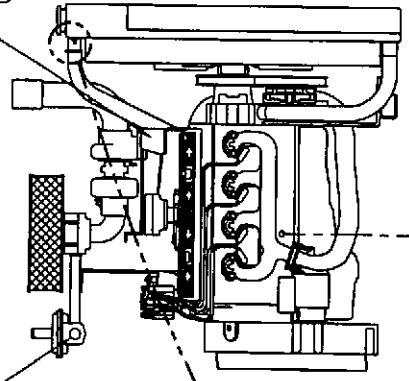


OIL PRESSURE SENDER, SHUTDOWN AND PRE-SHUTDOWN

FUEL INLET 1.50 NPT IMP VALVE P/N 41025

ACTUATOR P/N 70496 MTD ON BRACKET P/N 70074

Ø3.50 O.D. EXHAUST OUTLET



LOW WATER LEVEL PROBE

28.00

FAN GUARD P/N 71132

OIL HEATER (WHEN REQUIRED) 1" COUPLING WELDED IN PLACE (SPACE PERMITTING)

ORIGINAL

MAG PICK-UP 5/8-18 P/N 70501

OIL COOLER SUPPLY TO THERMOSTAT

OIL COOLER

TO OIL COOLER FROM ENGINE BLOCK

TO OIL COOLER

FROM WATER HEATER (HOT RETURN)

LOW WATER TEMP

TO WATER HEATER (COLD SUPPLY)

**KATOLIGHT**

MAKATO, MINNESOTA

7.4L TURBO GM 85-100 KW

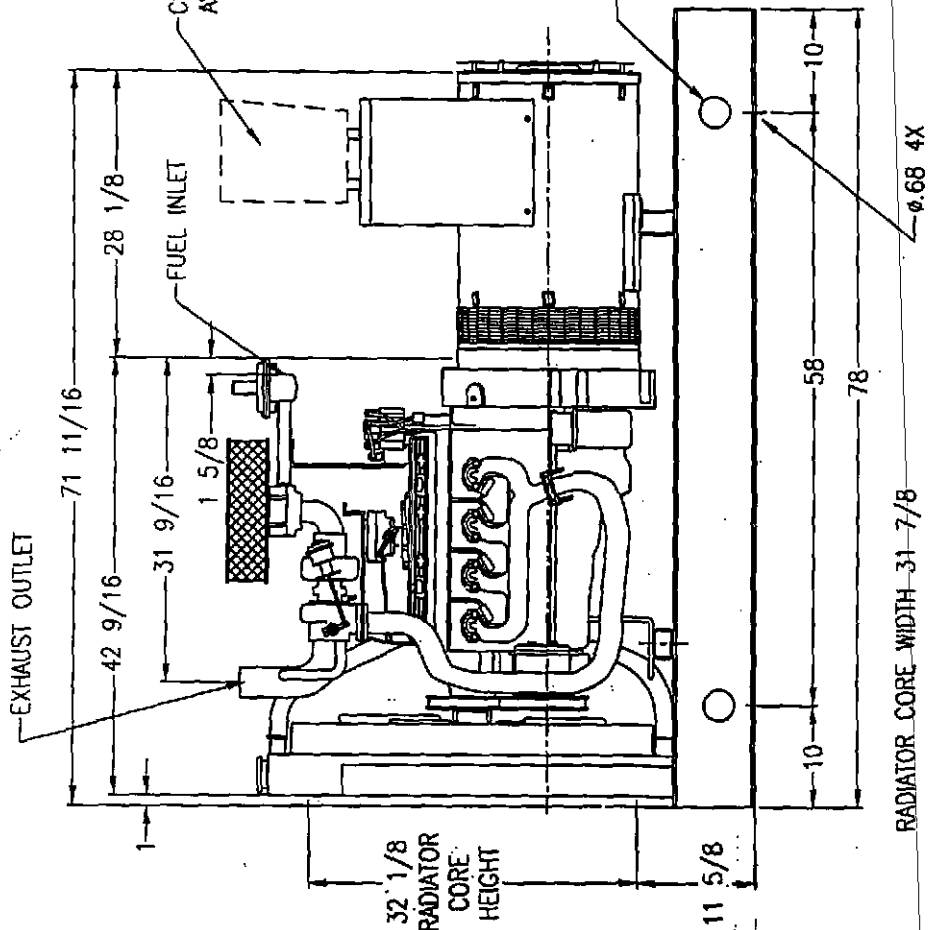
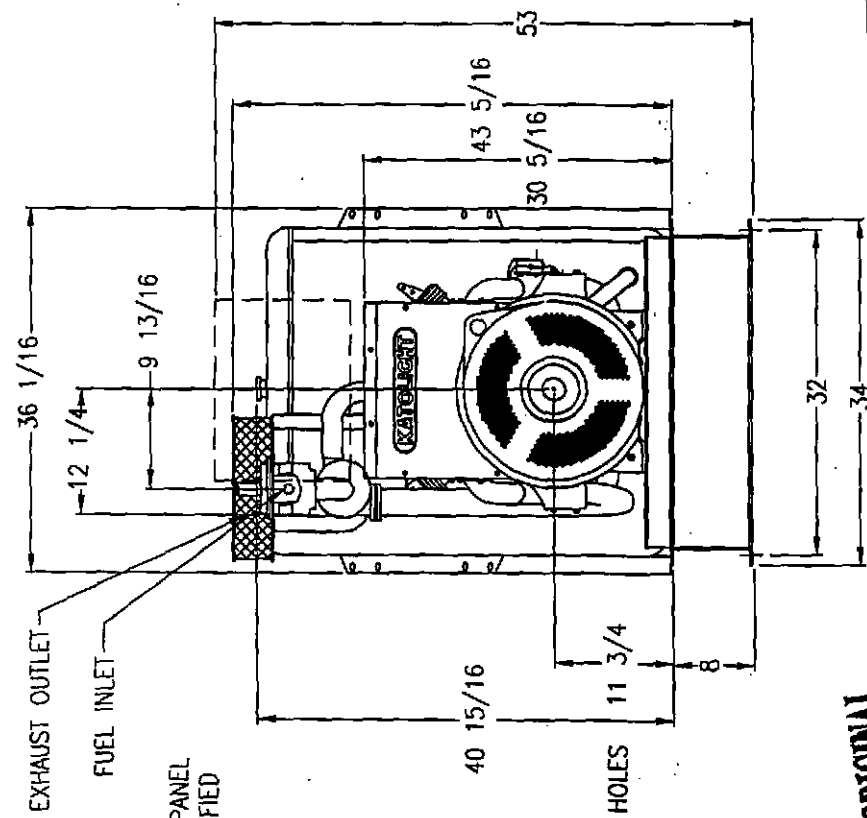
SIZE DATE TONG NO

B 12-27-00

SWITCHES & SENDERS

DO NOT SCALE PART NO

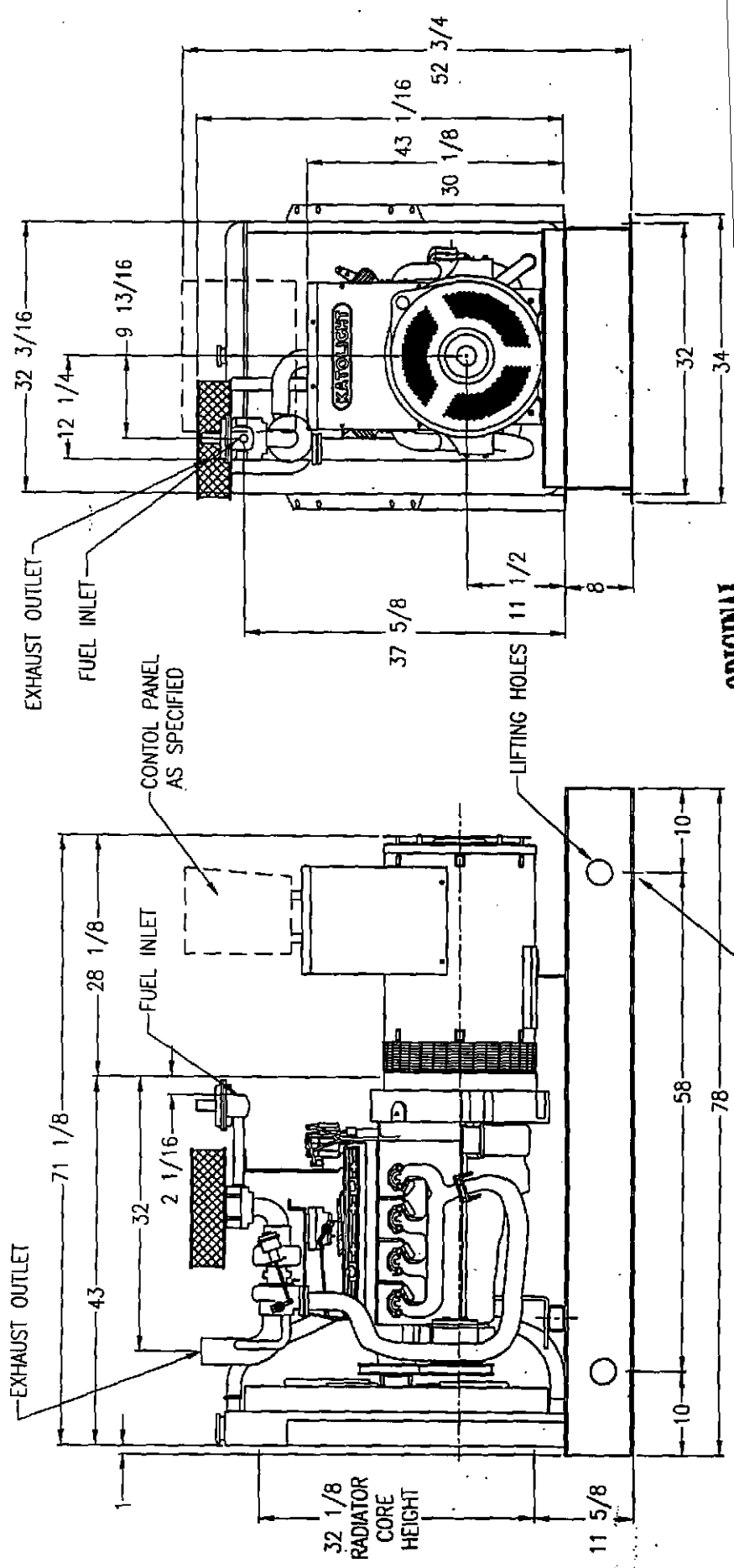
OWN BY JAK SHEET 1 OF 1



ORIGINAL

<b>KATOLIGHT</b>			
MARQUA, MINNESOTA			
ENGINE	GENERATOR	RADIATOR	INSULING
GM 7.4L KEM	362 PSL	STD. W/ENG	OPU
SIZE	DATE	DWG NO	
B	4-29-99	100-1177	
SCALE .09=1	PART NO	OWN BY LJS	SHEET 1 OF 1

REVISIONS:  
1. REVISED TO SHOW ACTUAL RADIATOR FROM KEM. GMC 11/3/99



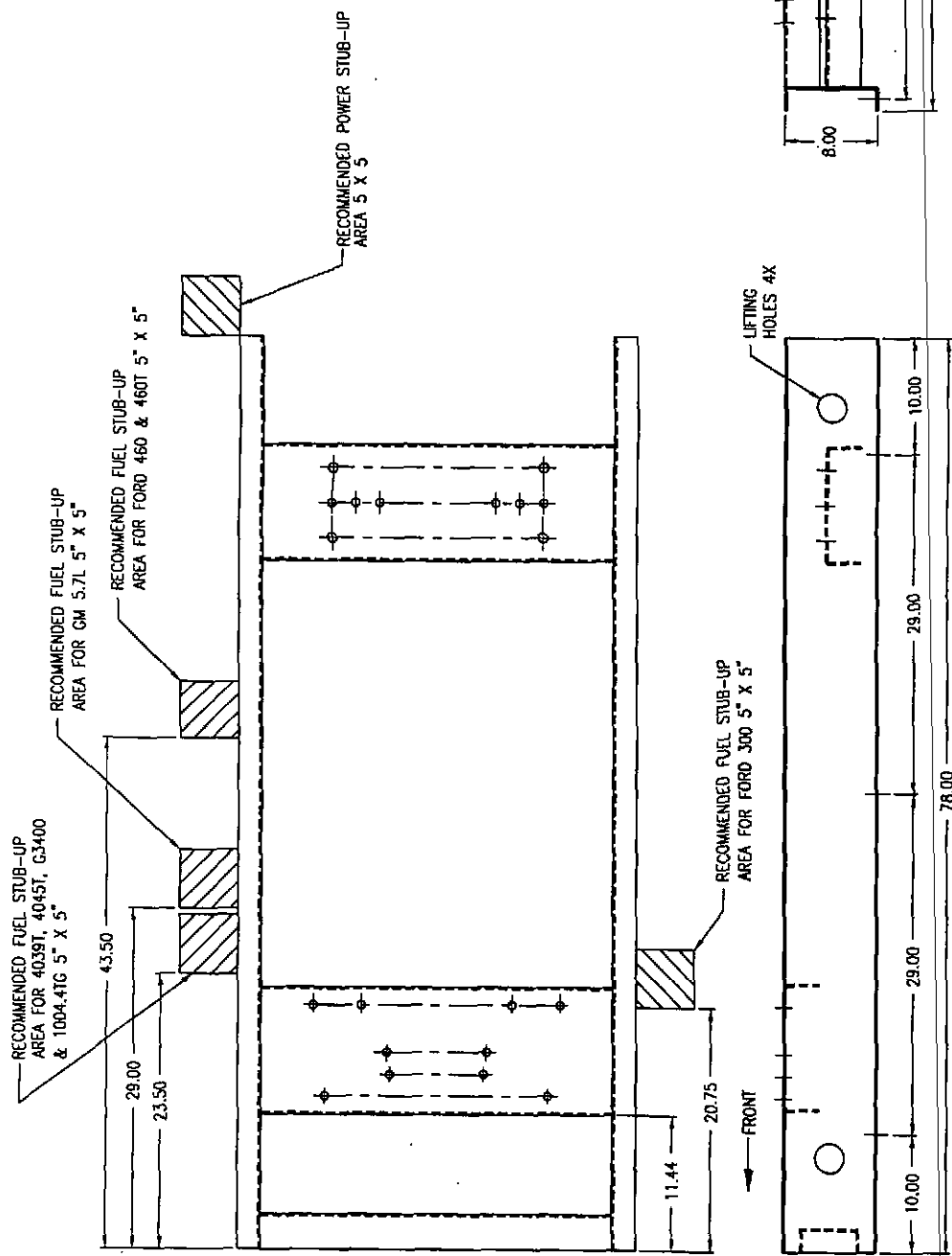
ORIGINAL

RADIATOR CORE WIDTH-31 7/8

**KATOLIGHT**  
MARSHAL, MINNESOTA

ENGINE	GENERATOR	RADIATOR	HOUSING
GM 7.4L KEM	362 PSL	STD W/ENG	OPU
SIZE	DATE	TOWS NO	
B	4-29-99	100-1179	
SCALE .09=1	PART NO	OWN BY	LJS SHEET 1 OF 1

REVISION:  
1. REVISED TO SHOW ACTUAL RADIATOR FROM KEM. GMC 11/5/99



ORIGINAL

REVISIONS: 1. ADDED FRONT CHL. 5-8-97 MRL  
2. CHANGED ENGINE HOLE PATTERN 3-17-99 SKB  
3. ADDED CENTER MTG HOLES 1-9-01 SMA

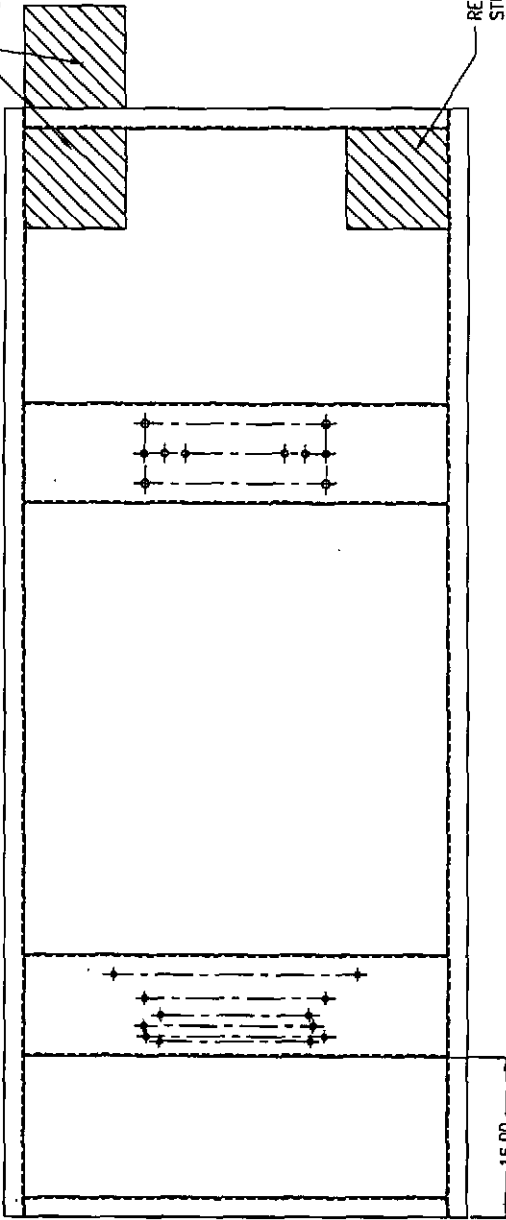
ENGINES: FORD GM PERKINS  
460 7.4L 1004-4TG  
460T 5.7L  
4.3L

NOTES:  
-1- FUEL STUB-UP AREA NOT REQUIRED  
WHEN USING SUB-BASE FUEL TANK

<b>KATOLIGHT</b> MANKATO, MINNESOTA		GENERATOR	RADIATOR	HOUSING
ENGINE	360,430	STD W/ENG	OPU	
SIZE	B	DWG NO	102-2006	
DATE	2-10-97	PART NO		DWG BY MRL SHEET 1 OF 1
SCALE	.12=1			

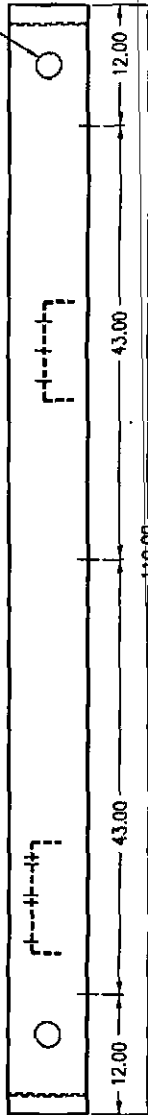
RECOMMENDED POWER  
STUB-UP AREA 10 x 10

RECOMMENDED FUEL  
STUB-UP AREA 10 x 10

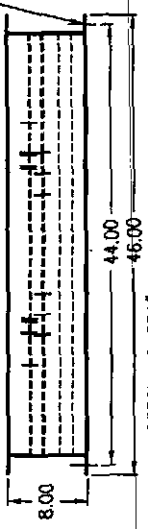


FRONT

LIFTING  
HOLES 4X



.688 BASE MTG HOLES



APPROX. WT. 284#

**KATOLIGHT**  
MANKATO, MINNESOTA

ENGINE	GENERATOR	RADIATOR	HOUSING
	360,430	STD W/ENG	
SIZE	DATE	DWG NO	
B	2-11-97	102-2011-A	
SCALE	1/2"=1'	PART NO	DWG BY MRL SHEET 1 OF 1

ENGINES: HERCULES JD CUMMINS PERKINS HOUSINGS: HSG-104  
GTA4800 6081A 68T5.9C 6081T 6059T 6081T 6059T 6081T 6059T  
6081T 6059T 6081T 6059T

REVISIONS:  
1. MOVED STUB-UPS TO THE INSIDE 7-28-00 JAK  
2. ADDED POWER STUB-UP TO OUTSIDE 9-6-00 JAK

NOTES:  
1. FUEL STUB-UP AREA NOT REQUIRED WHEN USING  
SUB-BASE FUEL TANK  
2. POWER STUB-UP MAYBE LOCATED INSIDE HOUSING  
ON GASEOUS UNITS ONLY. EXCEPTION FOR DIESEL UNITS  
WHEN USING SUB-BASE FUEL TANK W/ STUB-UP AREA  
THRU TANK. ANY OTHER APPLICATIONS, STUB-UP IS OUTSIDE  
OF HOUSING.