

4.3 L

INDUSTRIAL GASOLINE ENGINE

Owner/ Operators Manual

A GM Powertrain Product
by Great Lakes Power Center, Inc.
Wood Dale, IL

A Subsidiary of Power Great Lakes, Inc. TM



1234

UNIVERSITY OF CALIFORNIA

BERKELEY

Department of Chemistry
Berkeley, California

Received from the author

**Great Lakes Power Center, Inc.
Industrial Gasoline Engines**

Industrial gasoline engines are manufactured for Great Lakes Power Center, Inc. by GM Powertrain, a division of General Motors Corp. The engines are sold and supported throughout the United States and Canada by Power Great Lakes, Inc. (PGL, Inc.) and a Power Great Lakes, Inc. Distributor and Dealer organization.

For this reason all references in this manual to GM POWERTRAIN engines shall be read to mean Great Lakes Power Center, Inc. A subsidiary of Power Great Lakes, Inc., or Power Great Lakes, Inc.

Additional copies of this manual may be purchased from PGL, Inc. or any of its authorized Distributors or Dealers throughout North America.

For further information about all Great Lakes Power Center and Power Great Lakes, Inc. products please contact:

**Heidi Schaaf
Power Great Lakes, Inc.
655 Wheat Lane
Wood Dale, IL 60102
800-551-2938
708-350-9400**

To the Operator

Power - driven equipment is only as safe as the person operating the controls. You are urged as the operator of this diesel engine, to keep fingers and clothing away from the revolving belts, drive shafts, etc. on the engine installation.

This guide contains instructions on the safe operation and preventative maintenance of your GM Powertrain Industrial Engine. Maintenance instructions cover routine services such as lube oil and filter changes in enough detail to permit self-servicing, if desired.

The operator should become familiar with the contents of this manual before operating the engine or carrying out maintenance procedures.

Throughout this guide, cautions regarding personal safety will be marked by the symbol to the left. Notices regarding engine performance or service life will also appear marked by "Attention". To avoid personal injury and ensure long engine service life, always read these instructions.

Whenever possible, it will benefit you to rely on an authorized Great Lakes Power Center service outlet for all your service needs from maintenance to major parts replacement. Authorized service outlets worldwide stock factory original parts and have the specialized equipment and experienced, trained personnel to provide prompt preventive maintenance and skilled engine repairs.

The information and specifications in this publication are based on the information in effect at the time of approval from printing. Contact an authorized Great Lakes Power Center service outlet for information on the latest revision. The right is reserved to make changes at any time without obligation.

OPERATING INSTRUCTIONS

GM Powertrain

INDUSTRIAL ENGINES

The PGL, Inc. gasoline engine is equipped with an electronic governor for speed control and engine regulation. You will note the absence of a throttle cable. The engine speeds are preset at the factory and should require NO adjustment of the engine speeds in the field.

Engine Controls and Instruments:

The engine power unit is equipped with an instrument panel containing Murphy Safety Gauges. Located in this panel are the key switch, two (2) toggle switches, and the engine choke cable.

The panel also contains a shut down relay, volt meter, low oil pressure gauge, high water temperature gauge, and tach/hour meter.

Control Switches:

Looking at the instrument panel, there are two (2) toggle switches at the bottom of the panel. The switch on the left, is the governor On/Off switch. The switch on the right, is the governor speed control Hi/Lo switch.

Choke Cable:

Note the location of the engine Choke Cable. It will either be in the instrument panel near the toggle switches, or just below the instrument panel, mounted in the sheet metal.

Starting the Engine:

Pull the choke cable to the full on position.

With the On/Off toggle switch in the **On** position, and the Hi/Lo switch in the **Middle** position, turn the key switch to the start position and begin cranking the engine, pushing in the Murphy shut down relay button. After the engine starts and oil pressure increases, release the relay button, and gradually begin pushing in on the choke cable.

Note: On cold days it may be necessary to use the engine choke longer than it will be on warm days. Do Not over choke the engine as this will cause flooding, and difficulty in starting the engine.

Allow the engine to warm up a few minutes at this RPM.

Engaging the Clutch:

If your engine is equipped with a PTO type clutch, the following will be of interest to you.

Move the Hi/Lo switch to the Lo position. The engine speed will now increase to 1100 ± 50 RPM. At this RPM the engine clutch can now be engaged.

Preferred engagement of the clutch is with one single hand lever movement. However, a machine that has a sizable driven inertia load may require 'bumping in' the clutch. These types of machines generally have a resistance to start-up rotation and a tendency to stall the engine. It may take two, three or four seconds to bring the load up to the engine speed. 'Bumping in' involves several partial engagements with the hand lever. Each synchronized motion promotes rotation to the driven mass, progressively increasing speed. After two or three 'bumps' the hand lever is moved to the fully engaged position

NOTE:

The 'bumping in' procedure may be necessary, when the engine is first started in the morning, or in Winter weather.

Operator experience often dictates the number of 'bumps' required for a specific machine to allow the engine to accelerate the mass.

(If the engine stalls during engagement of the clutch, return the Hi/Lo switch to the middle position, push in on the Murphy relay button, and restart the engine.)

Move the Hi/Lo switch to the Lo position and engage the clutch. As the driven load increases in speed, you will note that the engine RPM may cycle ± 100 RPM for a few seconds before it again stabilizes. This results from the inertia of the driven load driving the engine RPM above and below the governed speed until the governor can control the speed.

Move the Hi/Lo switch to the HI position. The engine will begin to increase in speed to the preset max RPM specified by the OEM. Again you will note that the engine will cycle ± 200 to 300 RPM because of driven load inertia, but will become steady within a few minutes.

Commence Operation:

Work Cycle Complete:

When work cycle has been completed, return the Hi/Lo switch to the Middle position, and disengage the clutch.

The engine speed will now return to approximately 800 to 1000 RPM.

Engine Cool Down:

Allow the engine to run at this RPM for a few minutes, to cool the engine down

Move the On/Off switch to the Off position, and allow the engine to return to slow idle (500 to 600 RPM).

Then turn the Key Switch to the off position.

CAUTION:

THE GOVERNOR CONTROLLER IS PRESET AT THE FACTORY AND MUST NOT BE TAMPERED WITH. IF FOR ANY REASON YOU DO NOT FEEL THAT THE GOVERNOR IS FUNCTIONING PROPERLY PLEASE CALL POWER GREAT LAKES, INC. IMMEDIATELY, AT 800 551 2938, ASK FOR DICK BEIL OR BOB TRUMP.

UNDER NO CIRCUMSTANCES SHOULD ANY UNAUTHORIZED PERSON ATTEMPT TO MAKE ANY ADJUSTMENTS TO THE GOVERNOR CONTROLLER.

Great Lakes Power Center
655 Wheat Lane
Wood Dale, IL 60191

WARRANTY

WARRANTY ON NEW GENERAL MOTORS POWERTRAIN (GMPT) ENGINES IN ORIGINAL EQUIPMENT MANUFACTURERS (OEM) INDUSTRIAL POWER APPLICATIONS

GMPT warrants to the OEM only, each new engine manufactured or supplied by GMPT and sold to the OEM for installation in its industrial application, that for a period of 12 months or 1,500 hours, whichever first occurs, it will reimburse or credit OEM for necessary repairs or replacements of any defective or malfunctioning parts of such engine up to the original price of the engine and up to a maximum of four (4) hours labor.

The Warranty period shall begin on the date the OEM industrial equipment is delivered to the first retail purchaser or if the irrigation equipment is first placed in service prior to sale at retail, it will be the date the equipment is first placed in such service.

This Warranty covers only malfunctions resulting from defects in material or workmanship.

This Warranty does not cover malfunctions resulting from misuse, negligence, accident, alterations not approved by GMPT, lack of performance of normal maintenance services or improper installation: the replacement of maintenance items (such as spark plugs, ignition points, positive crankcase ventilator valve, and filters) made in connection with normal maintenance service: loss of time, inconvenience, loss of use of the equipment or other consequential damages: or labor for removal from or reinstallation of the component in the industrial equipment.

GMPT will reimburse or credit the OEM for the repair or replacement under this Warranty for any part found to be defective or the cause of a malfunction. Such reimbursement or credit will be at GMPT's current price of such part to the OEM and bench repair labor.

Defective or malfunctioning parts qualifying under this Warranty must be held at the OEM's place of business for examination by GMPT.

This Warranty is the only Warranty applicable to engines and is expressly in lieu of any other warranties, expressed or implied, including any implied Warranty of merchantability or fitness for a particular purpose, and or any other obligation or liability on the part of GMPT: and GMPT neither assumes nor authorizes any other person to assume for it any other liability in connection with such engines.

Safety Precautions

These safety precautions are important. You must refer also to the local regulations in the country of use. Some items only apply to specific applications.

- * Only use these engines in the type of application for which they have been designed.
- * Do not change the specification of the engine.
- * Do not smoke when you put fuel in the tank.
- * Clean away fuel which has been spilt. Material which has been contaminated by fuel must be moved to a safe place.
- * Do not put fuel in the tank while the engine runs (unless it is absolutely necessary).
- * Do not clean, add lubricating oil, or adjust the engine while it runs (unless you have had the correct training, even then extreme caution must be used to prevent injury).
- * Do not make adjustments that you do not understand.
- * Ensure that the engine does not run in a location where it can cause a concentration of toxic emissions.
- * Other persons must be kept at a safe distance while the engine or equipment is in operation.
- * Do not permit loose clothing or long hair near moving parts.
- * Keep away from moving part during engine operation. ATTENTION: The fan cannot be seen clearly while the engine runs.
- * Do not operate the engine if a safety guard has been removed.
- * Do not remove the filler cap of the cooling system while the engine is hot and while the coolant is under pressure, because dangerous hot coolant can be discharged.
- * Do not use salt water or any other coolant which can cause corrosion in the closed cooling circuit.
- * Do not allow sparks or fire near the batteries (especially when the batteries are on charge) because the gases from the electrolyte are highly flammable. The battery fluid is dangerous to the skin and especially to the eyes.
- * Disconnect the battery terminals before a repair is made to the electrical system.
- * If your skin comes into contact with high-pressure fuel, obtain medical assistance immediately.
- * Gasoline and lubricating oil (especially used lubricating oil) can damage the skin of certain persons. Protect your hands with gloves or a special solution to protect the skin.
- * Do not wear clothing which is contaminated by lubricating oil. Do not put material which is contaminated with oil into the pockets.
- * Discard used lubricating oil in a safe place to prevent contamination.
- * Do not move mobile equipment if the brakes are not in good condition.
- * Ensure that the control lever of the transmission drive is in the "out-of-drive" position before the engine is started.
- * The combustible material of some components of the engine (for example certain seals) can become extremely dangerous if it is burned. Never allow this burnt material to come into contact with the skin or with the eyes.
- * Fit only genuine GM Powertrain or Power Great Lakes Parts.

Gasoline Requirements

The ignition timing set by the factory requires the use of lead -free gasoline with the following minimum or higher octane rating:

Anti-Knock Index Number (AKI) - 87
Research Octane Number (RON) - 91

NOTE: Use of gasoline with a lower than 87 AKI (91 RON) octane will result in serious damage to your engine.

Engine damage resulting from the use of lower octane gasoline than 87 AKI (91 RON) is considered misuse of the engine and will void your engine warranty.

Detonation or spark knock in an engine is not necessarily audible. Overheating and continued running after the ignition switch is turned off are indications of detonation in the engine. If you suspect detonation or spark knock, contact your distributor/dealer.

SAFETY WARNING

GASOLINE IS EXTREMELY FLAMMABLE AND HIGHLY EXPOSIVE UNDER CERTAIN CONDITIONS. ALWAYS STOP THE ENGINE AND DO NOT SMOKE, OR ALLOW OTHERS TO SMOKE, OR ALLOW OPEN FLAMES OR SPARKS NEAR THE FUEL TANK OR ENGINE WHEN REFUELING.

GASOLINE CONTAINING ALCOHOL

Many gasolines being sold today contain alcohol. Two commonly used alcohol additives are Ethanol (ethyl alcohol) and Methanol (methyl alcohol).

Your gasoline engine may be operated using gasolines blended with no more than 10% Ethanol meeting the minimum octane

specifications. **DO NOT** use any gasoline which contains **METHANOL**.

SAFETY WARNING

FUEL LEAKAGE CAN CONTRIBUTE TO A FIRE AND/OR AN EXPLOSION.

MOTOR OIL

To obtain the best engine performance and life, use only motor oils with the recommended quality and viscosity. Motor oils are specified by API service, letter designations and SAE viscosity numbers.

Initial factory fill is a high quality oil for API Service SF/CC. During the initial break in period, frequently check the oil level. Somewhat higher than normal oil consumption may occur during the first 20 hours of use. If it is necessary to add any oil, use a premium quality single viscosity motor oil with API Service designation SF/CC.

When you add or change motor oil, use only oils with API Service SF and select from the following chart the SAE viscosity that matches the temperature range in which you expect to operate. If necessary to add oil, use a premium quality oil API Service SG/CD, SF/CC of the same viscosity.

Recommended SAE Viscosity Grades.

5W20	+20 to -25 Degrees 'F'
10W30	+104 to -15 Degrees 'F'
15W40	+122 to +14 Degrees 'F'
20W50	+122 to +25 Degrees 'F'
10W	+40 to -25 Degrees 'F'
20W	+75 to +32 Degrees 'F'
30W	+104 to +45 Degrees 'F'
40W	+122 to +60 Degrees 'F'

GENERAL INFORMATION

SAFETY

This manual contain certain information related to the personal safety of the operator and/or bystanders.

THE SAFETY SYMBOL , APPEARS NEXT TO IMPORTANT INFORMATION TO PREVENT YOU AND OTHERS FROM BEING HURT.

Please observe all safety warnings contained in this manual.

PRODUCT REFERENCES

When reference is made in this manual to a brand name, number, or product, and equivalent product may be used in place of the product referred to unless specifically stated otherwise.

SPECIFICATIONS

Great Lakes Power Center, Inc. and Power Great Lakes, Inc. reserves the right to make changes at any time, without notice, to specifications and models and also discontinue models. The right is also reserved to change specifications or parts at any time without incurring any obligation to equip same on models manufactured prior to the date of change.

ENGINE IDENTIFICATION

The initial gasoline engines provided by Great Lakes Power Center are of four cylinder in-line, V-six, and V-eight configuration. The engines are spark ignited, and can be provided in gasoline, liquid propane gas, natural gas, and compressed natural gas configuration.

SERIAL NUMBER

The engines are identified by stamping an engine serial number into the cylinder block, and with a metalized serial number tag affixed to the engine rocker cover.

On four cylinder engines, the serial number is stamped into the cylinder block on the right side of the engine, just in front of the flywheel housing. On 'V' configured engines the number is stamped into the cylinder block on the left side of the engine just in front of the flywheel housing.

The metalized tag contains the engine model number as well as the serialized number.

EXAMPLE:

3.OLA.....Engine Displacement in Liters.

'A'.....Year of Manufacture

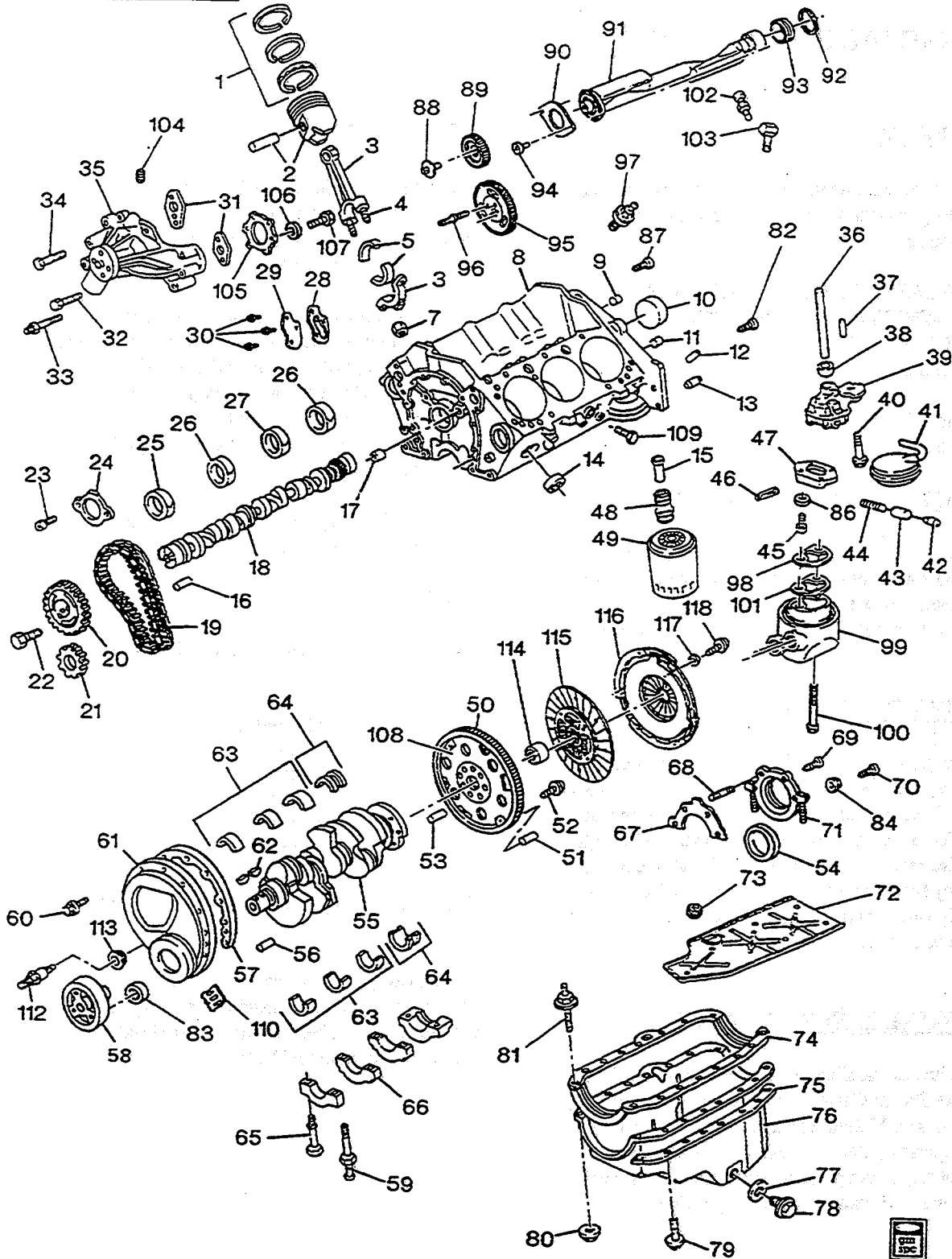
(I.E. 'A' 1996
 'B' 1997
 'C' 1998
 'D' 1999
 'E' 2000

The following digits being the engine serial number.

If you need parts, service, or information for your engine, you must provide the complete engine serial number to your Power Great Lakes, Inc. distributor/dealer.

ENGINE, PARTIAL

OM00-003 08/10/95



1985-1996 OEM ENGINE ASM-4.3L V6 PART 1

OM00-003D

1.	0.643	RING KIT, PSTN (.030 O.S.)	85-92	1 (LB4)	6	12507986
	0.643	RING KIT, PSTN (STD) (FOR PISTONS W/DEEP OIL GROOVE)	85-93	1 (LB4)	4	14089025
	0.643	RING KIT, PSTN (.030 O.S.)	85-93	1 (LB4)	6	14089026
	0.643	RING KIT, PSTN (.030" O.S.) (*17, 18, 24, 27)	94	1 (LB4)	6	12528819

0.643	RING KIT, PSTN (*17, 18, 24, 27) (STD) (LOW TENSION)	94 I (LB4)	6 10148018
0.643	RING KIT, PSTN (*17, 18, 24, 27) (STD)	95 I (LB4)	6 12522848
0.643	RING KIT, PSTN (*17, 18, 24, 27) (.5MM O.S.)	95 I (LB4)	6 12524205
0.643	RING KIT, PSTN (*17, 18, 24, 27) (.5MM O.S.)	96 I (L35)	6 12524205
0.643	RING KIT, PSTN (*17, 18, 24, 27) (.005 O.S.)	94 I (LB4)	6 12528818
0.643	RING KIT, PSTN (*21, 28, 31) (.030 O.S.)	94-95 I (LB4)	6 12507986
0.643	RING KIT, PSTN (*28, 31, 32) (.030 O.S.)	96 I (L35)	6 12507986
0.643	RING KIT, PSTN (*5) (.030 O.S.)	93 I (LB4)	6 12507986
0.643	RING KIT, PSTN (STD) (FOR PISTONS W/SHALLOW OIL GROOVE)	85-92 I (LB4)	6 12507985
0.643	RING KIT, PSTN (STD) (*21, 28, 31) (FOR PISTONS W/SHALLOW OIL GROOVE)	94-95 I (LB4)	6 12507985
0.643	RING KIT, PSTN (STD) (*28, 31, 32) (FOR PISTONS W/SHALLOW OIL GROOVE)	96 I (L35)	6 12507985
0.643	RING KIT, PSTN (STD) (*5) (FOR PISTONS W/SHALLOW OIL GROOVE)	93 I (LB4)	6 12507985
2.	0.629 PISTON KIT, ENG (W/PIN & RINGS) (STD)	85-92 I (LB4)	6 12514101
0.629	PISTON KIT, ENG (W/PIN & RINGS) (HI LIMIT)	85-92 I (LB4)	1 12514102
0.629	PISTON KIT, ENG (W/PIN & RINGS) (.030 O.S.)	85-92 I (LB4)	1 12520266
0.629	PISTON KIT, ENG (W/PIN & RINGS) (*21, 28, 31) (STD)	94-95 I (LB4)	6 12514101
0.629	PISTON KIT, ENG (W/PIN & RINGS) (*21, 28, 31) (HI LIMIT)	94-95 I (LB4)	6 12514102
0.629	PISTON KIT, ENG (W/PIN & RINGS) (*21, 28, 31) (.030 O.S.)	94-95 I (LB4)	6 12514103
0.629	PISTON KIT, ENG (W/PIN & RINGS) (*28, 31, 32) (STD)	96 I (L35)	6 12514101
0.629	PISTON KIT, ENG (W/PIN & RINGS) (*28, 31, 32) (HI LIMIT)	96 I (L35)	6 12514102
0.629	PISTON KIT, ENG (W/PIN & RINGS) (*28, 31, 32) (.030 O.S.)	96 I (L35)	6 12514103
0.629	PISTON KIT, ENG (W/PIN & RINGS) (*5) (STD)	93 I (LB4)	6 12514101
0.629	PISTON KIT, ENG (W/PIN & RINGS) (*5) (HI LIMIT)	93 I (LB4)	8 12514102
0.629	PISTON KIT, ENG (W/PIN & RINGS) (*5) (.030 O.S.)	93 I (LB4)	6 12520266
0.629	PISTON, (W/PIN) (.030 O.S.) (*2, 3, 8, 9, 10, 11, 12, 17, 18, 24, 27)	93-94 I (LB4)	6 12514100
0.629	PISTON, (W/PIN) (.030 O/S) (*13)	93 I (LB4)	6 12508704
0.629	PISTON, (W/PIN) (SERV HI LIMIT) (*13)	93 I (LB4)	6 12508703
0.629	PISTON, (W/PIN) (STD) (*13)	93 I (LB4)	6 12508702

	0.629	PISTON, (W/PIN) (STD) (*2, 3, 8, 9, 10, 11, 12, 17, 18, 24, 27)	93-94 I (LB4)	6	12514099
	0.629	PISTON KIT, ENG (W/PIN & RET) (*17, 18, 24, 27) (STD)	95 I (LB4)	1	12522850
	0.629	PISTON KIT, ENG (W/PIN & RET) (*17, 18, 24, 27) (0.5MM O.S.) ..	95 I (LB4)	1	12524224
	0.629	PISTON KIT, ENG (W/PIN & RET) (*17, 18, 24, 27) (STD)	96 I (L35)	1	12522850
	0.629	PISTON KIT, ENG (W/PIN & RET) (*17, 18, 24, 27) (0.5MM O.S.) ..	96 I (L35)	1	12524224
3.	0.603	ROD, CONN	85-95 I (LB4)	6	10201166
	0.603	ROD, CONN	96 I (L35)	6	10201166
4.	0.623	BOLT, CONN ROD (3/8-24 X 49.5MM)	85-95 I (LB4)	12	14077941
	0.623	BOLT, CONN ROD (3/8-24 X 49.5MM)	96 I (L35)	12	14077941
5.	0.616	BEARING KIT, CONN ROD (.014MM U.S.)	85-92 I (LB4)	6	18012482
	0.616	BEARING KIT, CONN ROD (.014MM U.S.) (*1, 6, 14, 15) ...	93 I (LB4)	6	18012482
	0.616	BEARING KIT, CONN ROD (STD)	85-95 I (LB4)	6	12522101
	0.616	BEARING KIT, CONN ROD (STD)	96 I (L35)	6	12522101
7.	0.626	NUT, CONN ROD (PART OF 3) (3/8-24, 301M ZC) (HEX) (*1, 2, 3, 4, 5, 6, 7, 8, 9, 10) (8.915)	85-95 I (LB4)	12	225854
	0.626	NUT, CONN ROD (PART OF 3) (3/8-24, 301M ZC) (HEX) (*11, 12, 13, 14, 15, 16, 17, 18, 19, 20) (8.915)	85-95 I (LB4)	12	225854
	0.626	NUT, CONN ROD (PART OF 3) (3/8-24, 301M ZC) (HEX) (*21, 22, 23, 24, 25, 26, 27, 28, 30) (8.915)	85-95 I (LB4)	12	225854
	0.626	NUT, CONN ROD (PART OF 3) (3/8-24, 301M ZC) (HEX) (*31, 32) (8.915)	85-95 I (LB4)	12	225854
	0.626	NUT, CONN ROD (PART OF 3) (3/8-24, 301M ZC) (HEX) (8.915)	96 I (L35)	12	225854
8.	0.033	ENGINE, SERV PARTIAL (*1, 2, 3, 4, 5, 6, 7, 8, 9, 10, 12) (INCL 10-15, 17, 25-27, 37, 56, 65) ..	90-91 I (LB4) (*MARINE 1-PIECE REAR SEAL)	1	10205294
	0.033	ENGINE, SERV PARTIAL (*11) (INCLS 10-15, 25-27, 37, 56, 65)	90-93 I (LB4)	1	12515797
	0.033	ENGINE, SERV PARTIAL (*15, 16, 20) (INCLS 10-15, 25-27, 37, 56, 65)	90 I (LB4)	1	12515797
	0.033	ENGINE, SERV PARTIAL (*17, 18, 19, 21, 22, 23, 24) (INCL 10-15, 17, 25-27, 37, 56, 65) ..	90 I (LB4) (*MARINE 1-PIECE REAR SEAL)	1	10205294
	0.033	ENGINE, SERV PARTIAL (*17, 18, 21, 24, 28, 31) (INCLS 1, 2, 3, 4, 5, 6, 7, 10, 12, 13, 15, 55, 63, 64, 66, 67.)	95 I (LB4)	1	12525527
	0.033	ENGINE, SERV PARTIAL (*17, 18, 24, 27) (INCLS 1, 2, 3, 4, 5, 6, 7, 15, 51, 54, 55, 59, 63, 64, 65, 68, 93)	93 I (LB4)	1	12521986

	0.033	ENGINE, SERV PARTIAL (*17, 18, 24, 27, 28) (INCLS 1, 2, 3, 4, 5, 6, 7, 15, 51, 54, 55, 59, 63, 64, 65, 68, 93)	94 I (LB4)	1	12521986
	DISCON	ENGINE, SERV PARTIAL (*2, 3, 8, 9, 10, 12)	93 I (LB4)	1	12512985
	0.033	ENGINE, SERV PARTIAL (*25) ..	85-86 I (LB4)	1	12515797
	0.033	ENGINE, SERV PARTIAL (*26) ..	85-91 I (LB4)	1	12515797
	0.033	ENGINE, SERV PARTIAL (INCLS 10-15, 25-27, 37, 56, 65) (*1, 4, 7)	92 I (LB4)	1	12515797
	0.033	ENGINE, SERV PARTIAL (INCLS 10-15, 25-27, 37, 56, 65) (*2, 3, 5, 6, 8, 9, 10, 12)	92-93 I (LB4)	1	12515797
	0.000	ENGINE, GOODWRENCH (ONLY FOR 4.3 OEM ENGINE W/MECHANICAL FUEL PUMP & LESS BALANCE SHAFT) (INCL:BLK, CR/SHF, CR/SHF BRGS, RR SEAL, CONN ROD & BRGS, PISTON & RINGS, CM/SHF & BRGS, CYL HD, TIMING CHAIN & GEARS, FRT CVR, OIL PAN, OIL PUMP, INST SH.)	85-92 I (LB4)	1	12517971
9.	1.531	PLUG, ENG BLK OIL GAL (RR) (1/4-18X0.56, STEEL) (8.971) (AC-DELCO #3889330)	85-95 I (LB4)	RH	3889330
	1.531	PLUG, ENG BLK OIL GAL (RR) (1/4-18X0.56, STEEL) (8.971) (AC-DELCO #3889330)	96 I (L35)	RH	3889330
	1.531	PLUG, ENG BLK OIL GAL (RR) (3/8-18, 27/64 DEEP) (PEOR, STL) (8.971)	85-95 I (LB4)	LH	14090911
	1.531	PLUG, ENG BLK OIL GAL (RR) (3/8-18, 27/64 DEEP) (PEOR, STL) (8.971)	96 I (L35)	LH	14090911
10.	0.553	PLUG, CM/SHF RR BRG HOLE (CUP W/CNTR INDENTATION, 53.48 O.D., 1010 STL, ZINC FLASH) (8.970)	85-92 I (LB4)	1	10241154
	0.553	PLUG, CM/SHF RR BRG HOLE (CUP W/CNTR INDENTATION, 53.48 O.D., 1010 STL, ZINC FLASH) (8.970)	94-95 I (LB4)	1	10241154
	0.553	PLUG, CM/SHF RR BRG HOLE (CUP W/CNTR INDENTATION, 53.48 O.D., 1010 STL, ZINC FLASH) (8.970)	96 I (L35)	1	10241154
	0.553	PLUG, CM/SHF RR BRG HOLE (*1, 6, 14, 15) (CUP W/CNTR INDENTATION, 53.48 O.D., 1010 STL, ZINC FLASH) (8.970)	93 I (LB4)	1	10241154
	0.553	PLUG, CM/SHF RR BRG HOLE (*2, 3, 5, 8, 9, 10, 11, 12, 13, 17, 18, 24, 27) (CUP W/CNTR INDENTATION, 53.48 O.D., 1010 STL, ZINC FLASH) (8.970)	93 I (LB4)	1	10241154

Item No.	Part No.	Description	Part No.	QTY	Part No.	Part No.
11.	0.137	PIN, CR/SHF RR OIL SEAL HSG LOC (8.940)	85-95 I (LB4)	1	9441003	OM00-003D
	0.137	PIN, CR/SHF RR OIL SEAL HSG LOC (8.940)	96 I (L35)	1	9441003	
12.	0.293	PIN, CYL HD LOC (5/16X9/16 STL) (8.939) (AC-DELCO #585927)	85-95 I (LB4)	6	585927	
	0.293	PIN, CYL HD LOC (5/16X9/16 STL) (8.939) (AC-DELCO #585927)	96 I (L35)	6	585927	
13.	0.685	PIN, TRANS LOC (5/8 DIA, 1 3/16 LG) (8.939)	85-95 I (LB4)	2	12338119	
	0.685	PIN, TRANS LOC (5/8 DIA, 1 3/16 LG) (8.939)	96 I (L35)	2	12338119	
14.	0.034	PLUG, ENG BLK CORE HOLE (BRASS) (AC-DELCO #3826504)	85-92 I (LB4)	6	3826504	
	0.034	PLUG, ENG BLK CORE HOLE (BRASS) (AC-DELCO #3826504)	94 I (LB4)	6	3826504	
	0.034	PLUG, ENG BLK CORE HOLE (BRASS) (AC-DELCO #3826504)	96 I (L35)	6	3826504	
	0.034	PLUG, ENG BLK CORE HOLE (*1, 2, 3, 6, 8, 9, 10, 11, 12, 14, 15, 17, 18, 24, 27) (BRASS) (AC-DELCO #3826504)	93 I (LB4)	6	3826504	
	0.034	PLUG, ENG BLK CORE HOLE (*13) (41.5MM DIA) (STEEL) (10.000)	91 I (LB4)	5	838538	
	0.034	PLUG, ENG BLK CORE HOLE (*13) (41.5MM DIA) (STEEL) (10.000)	93 I (LB4)	5	838538	
	0.034	PLUG, ENG BLK CORE HOLE (*5) (41.5MM DIA) (STEEL) (10.000)	91-93 I (LB4)	5	838538	
	15.	1.837	VALVE, OIL FLTR BYPASS (AC-DELCO #25014006)	85-91 I (LB4)	1	25014006
1.837		VALVE, OIL FLTR BYPASS (AC-DELCO #25014006)	93-95 I (LB4)	1	25014006	
1.837		VALVE, OIL FLTR BYPASS (AC-DELCO #25014006)	96 I (L35)	1	25014006	
1.837		VALVE, OIL FLTR BYPASS (*1, 4, 6, 7) (AC-DELCO #25014006)	92 I (LB4)	1	25014006	
16.	0.738	PIN, CM/SHF SPKT LOC (8.939)	94-95 I (LB4)	1	141201	
	0.738	PIN, CM/SHF SPKT LOC (8.939)	96 I (L35)	1	141201	
	0.738	PIN, CM/SHF SPKT LOC (*13) (8.939)	91 I (LB4)	1	12554553	
	0.738	PIN, CM/SHF SPKT LOC (*14, 15, 17, 18, 24, 27) (8.939)	93 I (LB4)	1	141201	
	0.738	PIN, CM/SHF SPKT LOC (*15, 16, 17, 18, 19, 20, 21, 22, 23, 24) (8.939)	90 I (LB4)	1	12554553	
	0.738	PIN, CM/SHF SPKT LOC (*4, 7) (8.939)	90-92 I (LB4)	1	12554553	
17.	1.531	PLUG, ENG BLK OIL GAL (FRT) (CUP 16.5, 9.7 LONG .89 THK SAE 1008-1010 STL) (AC-DELCO #461345)	93 I (LB4)	RH	461345	

	1.531	PLUG, ENG BLK OIL GAL (FRT) (CUP .476X.31)	93-95 I (LB4)	RH 14091563
	1.531	PLUG, ENG BLK OIL GAL (FRT) (CUP .626X.31) (*1, 2, 3, 5, 6, 8, 9, 10, 11, 12)	93 I (LB4)	LH 10105918
	1.531	PLUG, ENG BLK OIL GAL (FRT) (CUP .626X.31)	94-95 I (LB4)	LH 10105918
	1.531	PLUG, ENG BLK OIL GAL (FRT) (CUP .476X.31)	96 I (L35)	RH 14091563
	1.531	PLUG, ENG BLK OIL GAL (FRT) (CUP .626X.31)	96 I (L35)	LH 10105918
18.	0.519	CAMSHAFT, (*1, 2, 3, 4, 6, 7, 8, 9, 10, 11, 12) (INCL 16)	90-91 I (LB4)	1 14096233
	0.519	CAMSHAFT, (*1, 2, 3, 6, 8, 9, 10, 11, 12) (INCL 16)	92-93 I (LB4)	1 10214714
	0.519	CAMSHAFT, (*13) (INCL 16) ...	91 I (LB4)	1 10214713
	0.519	CAMSHAFT, (*13) (INCL 16) ...	93 I (LB4)	1 10172776
	0.519	CAMSHAFT, (*13) (INCL 16) ...	93 I (LB4)	1 10214713
	0.519	CAMSHAFT, (*14, 15, 17, 18, 24, 27) (INCL 16)	94-95 I (LB4)	1 14097324
	0.519	CAMSHAFT, (*14, 15, 17, 18, 24, 27) (INCL 16)	96 I (L35)	1 14097324
	0.519	CAMSHAFT, (*15, 16) (INCL 16)	90 I (LB4)	1 14096234
	0.519	CAMSHAFT, (*17, 18, 19, 20, 21, 22, 23, 24) (INCL 16)	90 I (LB4)	1 14096233
	0.519	CAMSHAFT, (*21, 28, 31) (INCL 16) (OEM/PRODUCTION)	94-95 I (LB4)	1 10144065
	0.519	CAMSHAFT, (*21, 28, 31) (INCL 16) (OEM/PRODUCTION)	96 I (L35)	1 10144065
	0.519	CAMSHAFT, (*4, 7) (INCL 16) ..	92 I (LB4)	1 10214714
	0.519	CAMSHAFT, (*5) (INCL 16)	90-91 I (LB4)	1 14096416
	0.519	CAMSHAFT, (*5) (INCL 16)	92 I (LB4)	1 10214713
19.	0.724	CHAIN, CM/SHF TMG (*1, 2, 3, 6, 8, 9, 10, 11, 12) (IS A ROLLER CHAIN) (.275/.285")	90-93 I (LB4)	1 14088783
	0.724	CHAIN, CM/SHF TMG (*13) (.40/.41"TOOTH WIDTH)	91 I (LB4)	1 14087014
	0.724	CHAIN, CM/SHF TMG (*13, 14, 15, 17, 18, 24, 27) (IS A ROLLER CHAIN) (.275/.285")	93 I (LB4)	1 14088783
	0.724	CHAIN, CM/SHF TMG (*17, 18, 19, 20, 21, 22, 23, 24) (IS A ROLLER CHAIN) (.275/.285") ...	90 I (LB4)	1 14088783
	0.724	CHAIN, CM/SHF TMG (*17, 18, 24, 27) (IS A ROLLER CHAIN) (.275/.285")	94-95 I (LB4)	1 14088783
	0.724	CHAIN, CM/SHF TMG (*17, 18, 24, 27) (IS A ROLLER CHAIN) (.275/.285")	96 I (L35)	1 14088783
	0.724	CHAIN, CM/SHF TMG (*21, 28, 31) (.40/.41"TOOTH WIDTH)	94-95 I (LB4)	1 14087014
	0.724	CHAIN, CM/SHF TMG (*21, 28, 31)	96 I (L35)	1 10128485
	0.724	CHAIN, CM/SHF TMG (*25) (IS A ROLLER CHAIN) (.275/.285") ...	85-86 I (LB4)	1 14088783
	0.724	CHAIN, CM/SHF TMG (*26) (IS A ROLLER CHAIN) (.275/.285") ...	85-91 I (LB4)	1 14088783
	0.724	CHAIN, CM/SHF TMG (*4, 7) (IS A ROLLER CHAIN) (.275/.285") .	90-92 I (LB4)	1 14088783

	0.724	CHAIN, CM/SHF TMG (*5) (.40/.41" TOOTH WIDTH)	90-93 I (LB4)	1	14087014
20.	0.736	SPROCKET, CM/SHF (*1, 2, 3, 6, 8, 9, 10, 11, 12, 13)	90-93 I (LB4)	1	12552129
	0.736	SPROCKET, CM/SHF (*13)	91 I (LB4)	1	12552128
	0.736	SPROCKET, CM/SHF (*13)	93 I (LB4)	1	12552128
	0.736	SPROCKET, CM/SHF (*14, 15, 17, 18, 24, 27)	93 I (LB4)	1	10144125
	0.736	SPROCKET, CM/SHF (*17, 18, 19, 20, 21, 22, 23, 24)	90 I (LB4)	1	12552129
	0.736	SPROCKET, CM/SHF (*17, 18, 24, 27)	94-95 I (LB4)	1	10144125
	0.736	SPROCKET, CM/SHF (*25)	85-86 I (LB4)	1	12552128
	0.736	SPROCKET, CM/SHF (*26)	85-91 I (LB4)	1	12552129
	0.736	SPROCKET, CM/SHF (*28, 31, 32)	94-95 I (LB4)	1	10144121
	0.736	SPROCKET, CM/SHF (*28, 31, 32)	96 I (L35)	1	10144121
	0.736	SPROCKET, CM/SHF (*4, 7)	90-92 I (LB4)	1	12552129
	0.736	SPROCKET, CM/SHF (*5)	90-93 I (LB4)	1	12552128
	N.S.	SPROCKET, CM/SHF (*15, 16, KIT2)	90 I (LB4)		
21.	0.728	SPROCKET, CR/SHF (*1, 2, 3, 6, 8, 9, 10, 11, 12) (IS A ROLLER CHAIN) (.275/.285" TOOTH WIDTH)	90-93 I (LB4)	1	14088784
	0.728	SPROCKET, CR/SHF (*13) (.40/.41" TOOTH WIDTH)	91 I (LB4)	1	464617
	0.728	SPROCKET, CR/SHF (*13, 14, 15, 17, 18, 24, 27) (IS A ROLLER CHAIN) (.275/.285" TOOTH WIDTH)	93 I (LB4)	1	14088784
	0.728	SPROCKET, CR/SHF (*17, 18, 19, 20, 21, 22, 23, 24) (IS A ROLLER CHAIN) (.275/.285" TOOTH WIDTH)	90 I (LB4)	1	14088784
	0.728	SPROCKET, CR/SHF (*17, 18, 24, 27) (.40/.41" TOOTH WIDTH)	94-95 I (LB4)	1	464617
	0.728	SPROCKET, CR/SHF (*17, 18, 24, 27) (IS A ROLLER CHAIN) (.275/.285" TOOTH WIDTH)	94-95 I (LB4)	1	14088784
	0.728	SPROCKET, CR/SHF (*17, 18, 24, 27) (.40/.41" TOOTH WIDTH)	96 I (L35)	1	464617
	0.728	SPROCKET, CR/SHF (*17, 18, 24, 27) (IS A ROLLER CHAIN) (.275/.285" TOOTH WIDTH)	96 I (L35)	1	14088784
	0.728	SPROCKET, CR/SHF (*25) (IS A ROLLER CHAIN) (.275/.285" TOOTH WIDTH)	85-86 I (LB4)	1	14088784
	0.728	SPROCKET, CR/SHF (*26) (IS A ROLLER CHAIN) (.275/.285" TOOTH WIDTH)	85-91 I (LB4)	1	14088784
	0.728	SPROCKET, CR/SHF (*4, 7) (IS A ROLLER CHAIN) (.275/.285" TOOTH WIDTH)	90-92 I (LB4)	1	14088784
	0.728	SPROCKET, CR/SHF (*5) (.40/.41" TOOTH WIDTH)	90-93 I (LB4)	1	464617
	N.S.	SPROCKET, CR/SHF (*15, 16, KIT2)	90 I (LB4)	1	

N.S.	SPROCKET, CR/SHF (*15, 16, KIT2)	90 I (LB4)	1	
0.728	SPROCKET, CR/SHF (*1, 2, 3, 6, 8, 9, 10, 11, 12) (IS A ROLLER CHAIN) (.275/.285"TOOTH WIDTH)	90-93 I (LB4)	1	14088784
0.728	SPROCKET, CR/SHF (*13) (.40/.41" TOOTH WIDTH)	91 I (LB4)	1	464617
0.728	SPROCKET, CR/SHF (*13, 14, 15, 17, 18, 24, 27) (IS A ROLLER CHAIN) (.275/.285"TOOTH WIDTH)	93 I (LB4)	1	14088784
0.728	SPROCKET, CR/SHF (*17, 18, 19, 20, 21, 22, 23, 24) (IS A ROLLER CHAIN) (.275/.285"TOOTH WIDTH)	90 I (LB4)	1	14088784
0.728	SPROCKET, CR/SHF (*17, 18, 24, 27) (.40/.41" TOOTH WIDTH)	94-95 I (LB4)	1	464617
0.728	SPROCKET, CR/SHF (*17, 18, 24, 27) (IS A ROLLER CHAIN) (.275/.285"TOOTH WIDTH)	94-95 I (LB4)	1	14088784
0.728	SPROCKET, CR/SHF (*17, 18, 24, 27) (.40/.41" TOOTH WIDTH)	96 I (L35)	1	464617
0.728	SPROCKET, CR/SHF (*17, 18, 24, 27) (IS A ROLLER CHAIN) (.275/.285"TOOTH WIDTH)	96 I (L35)	1	14088784
0.728	SPROCKET, CR/SHF (*25) (IS A ROLLER CHAIN) (.275/.285"TOOTH WIDTH)	85-86 I (LB4)	1	14088784
0.728	SPROCKET, CR/SHF (*26) (IS A ROLLER CHAIN) (.275/.285"TOOTH WIDTH)	85-91 I (LB4)	1	14088784
0.728	SPROCKET, CR/SHF (*4, 7) (IS A ROLLER CHAIN) (.275/.285"TOOTH WIDTH)	90-92 I (LB4)	1	14088784
0.728	SPROCKET, CR/SHF (*5) (.40/.41" TOOTH WIDTH)	90-93 I (LB4)	1	464617
22.	0.738 BOLT, CM/SHF SPKT (5/16-18 X 3/4, 300M) (HEX HD, STEEL) (8.900)	85-92 I (LB4)	3	9424877
	0.738 BOLT, CM/SHF SPKT (8.900)	94-95 I (LB4)	3	9419033
	0.738 BOLT, CM/SHF SPKT (8.900)	96 I (L35)	3	9419033
	0.738 BOLT, CM/SHF SPKT (*1, 2, 3, 5, 6, 8, 9, 10, 11, 12, 13) (5/16-18 X 3/4, 300M) (HEX HD, STEEL) (8.900)	93 I (LB4)	3	9424877
	0.738 BOLT, CM/SHF SPKT (*14, 15, 17, 18, 24, 27) (8.900)	93 I (LB4)	2	9419033
23.	0.529 BOLT, CM/SHF RET (HEX SOCKET TORQ DR 1/4-20X.5, .47 OD)	85-92 I (LB4)	2	14093637
	0.529 BOLT, CM/SHF RET (1/4-20X.625, .435THD)	94-95 I (LB4)	2	10105912
	0.529 BOLT, CM/SHF RET (1/4-20X.625, .435THD)	96 I (L35)	2	10105912
	0.529 BOLT, CM/SHF RET (*1, 2, 3, 5, 6, 8, 9, 10, 11, 12, 13) (HEX SOCKET TORQ DR 1/4-20X.5, .47 OD)	93 I (LB4)	2	14093637

	0.529	BOLT, CM/SHF RET (*14, 15, 17, 18, 24, 27) (1/4-20X.625, .435THD)	93 I (LB4)	2	10105912
24.	0.529	RETAINER, CM/SHF	85-91 I (LB4)	1	10088128
	0.529	RETAINER, CM/SHF	94-95 I (LB4)	1	10144059
	0.529	RETAINER, CM/SHF	96 I (L35)	1	10144059
	0.529	RETAINER, CM/SHF (*1, 2, 3, 5, 6, 8, 9, 10, 11, 12)	92-93 I (LB4)	1	10088128
	0.529	RETAINER, CM/SHF (*13)	93 I (LB4)	1	10088128
	0.529	RETAINER, CM/SHF (*14, 15, 17, 18, 24, 27)	93 I (LB4)	1	10144059
	0.529	RETAINER, CM/SHF (*4, 7)	92 I (LB4)	1	10088128
25.	0.539	BEARING, CM/SHF (#1 POS) ..	85-95 I (LB4)	1	474005
	0.539	BEARING, CM/SHF (#1 POS) ..	96 I (L35)	1	474005
26.	0.539	BEARING, CM/SHF (#2 & RR POS)	85-95 I (LB4)	AR	474006
	0.539	BEARING, CM/SHF (#2 & RR POS)	96 I (L35)	AR	474006
27.	0.539	BEARING, CM/SHF (#3 POS) ..	85-95 I (LB4)	1	474007
	0.539	BEARING, CM/SHF (#3 POS) ..	96 I (L35)	1	474007
28.	3.904	GASKET, F/PMP OPG CVR (*1, 2, 3, 4, 5, 6, 7, 8, 9, 10, 11, 12) ..	90-91 I (LB4)	1	14096609
	3.904	GASKET, F/PMP OPG CVR (*13)	91 I (LB4)	1	14096609
	3.904	GASKET, F/PMP OPG CVR (*15, 16, 17, 18, 19, 20, 21, 22, 23, 24) ..	90 I (LB4)	1	14096609
29.	3.901	COVER, F/PMP OPG (*1, 2, 3, 4, 5, 6, 7, 8, 9, 10, 11, 12)	90-91 I (LB4)	1	14094068
	3.901	COVER, F/PMP OPG (*13)	91 I (LB4)	1	14094068
	3.901	COVER, F/PMP OPG (*15, 16, 17, 18, 19, 20, 21, 22, 23, 24) ..	90 I (LB4)	1	14094068
30.	3.901	BOLT, F/PMP OPG CVR (*1, 2, 3, 4, 5, 6, 7, 8, 9, 10, 11, 12) (HFH 1/4-20X.56 280M PZOR) (8.900)	90-91 I (LB4)	6	9439930
	3.901	BOLT, F/PMP OPG CVR (*1, 2, 3, 4, 5, 6, 7, 8, 9, 10, 11, 12) (5/16-18X5/8, 280M) (8.900) (AC-DELCO #9440224)	90-91 I (LB4)	20	9440224
	3.901	BOLT, F/PMP OPG CVR (*13) (HFH 1/4-20X.56 280M PZOR) (8.900)	91 I (LB4)	6	9439930
	3.901	BOLT, F/PMP OPG CVR (*13) (5/16-18X5/8, 280M) (8.900) (AC-DELCO #9440224)	91 I (LB4)	20	9440224
	3.901	BOLT, F/PMP OPG CVR (*15, 16, 17, 18, 19, 20, 21, 22, 23, 24) (8.900)	90 I (LB4)	6	9439930
	3.901	BOLT, F/PMP OPG CVR (*15, 16, 17, 18, 19, 20, 21, 22, 23, 24) (8.900) (AC-DELCO #9440224)	90 I (LB4)	20	9440224
31.	1.079	GASKET, W/PMP (PART OF 35) ..	96 I (L35)	1	3754587
	1.079	GASKET, W/PMP (*1, 2, 3, 5, 6, 8, 9, 10, 11, 12) (PART OF 35) ..	90-93 I (LB4)	1	3754587
	1.079	GASKET, W/PMP (*13) (PART OF 35)	91 I (LB4)	1	3754587
	1.079	GASKET, W/PMP (*13, 14, 15, 17, 18, 24, 27) (PART OF 35) ..	93 I (LB4)	1	3754587

	1.079	GASKET, W/PMP (*15, 16, 17, 18, 19, 20, 21, 22, 23, 24) (PART OF 35)	90 (LB4)	1	3754587
	1.079	GASKET, W/PMP (*17, 18, 24, 27, 28, 31, 32) (PART OF 35) ...	94-95 (LB4)	1	3754587
	1.079	GASKET, W/PMP (*4, 7) (PART OF 35)	90-92 (LB4)	1	3754587
32.	1.079	BOLT, W/PMP (*1, 2, 3, 5, 6, 8, 9, 10, 11, 12, 14, 15, 17, 18, 24, 27.) (3/8-16 X 2 3/4, 300M) (HEX) (8.900)	93 (LB4)	1	9442250
	1.079	BOLT, W/PMP (*13) (3/8-16 X 2 3/4, 300M) (HEX) (8.900)	91 (LB4)	1	9442250
	1.079	BOLT, W/PMP (*13) (3/8-16X2 1/4) (8.900)	93 (LB4)	1	9442012
	1.079	BOLT, W/PMP (*15, 16, 17, 18, 19, 20, 21, 22, 23, 24) (8.900) ...	90 (LB4)	1	9442250
	1.079	BOLT, W/PMP (*17, 18, 24, 27) (3/8-16 X 1 3/4 CAD) (HEX) (8.900)	96 (L35)	2	9439637
	1.079	BOLT, W/PMP (*17, 18, 24, 27, 28) (3/8-16 X 2 3/4, 300M) (HEX) (8.900)	94-95 (LB4)	1	9442250
	1.079	BOLT, W/PMP (*17, 18, 27, 28) (3/8-16 X 2 3/4, 300M) (HEX) (8.900)	96 (L35)	1	9442250
	1.079	BOLT, W/PMP (*21, 28, 31.) (3/8-16X2.12)	96 (LB4)	1	12552096
	1.079	BOLT, W/PMP (*21, 28, 31, 32) (3/8-16X2 1/4) (8.900)	94-95 (LB4)	AR	9442012
	1.079	BOLT, W/PMP (*4, 7) (3/8-16 X 2 3/4, 300M) (HEX) (8.900)	90-92 (LB4)	1	9442250
33.	1.079	STUD, W/PMP (*1, 2, 3, 5, 6, 8, 9, 10, 11, 12) (5/16-24 X 3/8-16 X 2 9/16) (1.073)	90-93 (LB4)	RH	3759755
	1.079	STUD, W/PMP (*13) (5/16-24 X 3/8-16 X 2 9/16) (1.073)	91 (LB4)	RH	3759755
	1.079	STUD, W/PMP (*13) (3/8-16X2.25, 3/8-16X.75)	93 (LB4)	1	10088164
	1.079	STUD, W/PMP (*14, 15, 17, 18, 24, 27) (5/16-24 X 3/8-16 X 2 9/16) (1.073)	93 (LB4)	RH	3759755
	1.079	STUD, W/PMP (*15, 16, 17, 18, 19, 20, 21, 22, 23, 24) (1.073) ...	90 (LB4)	RH	3759755
	1.079	STUD, W/PMP (*17, 18, 24, 27) (5/16-24 X 3/8-16 X 2 9/16) (1.073)	96 (L35)	RH	3759755
	1.079	STUD, W/PMP (*17, 18, 24, 27, 28) (5/16-24 X 3/8-16 X 2 9/16) (1.073)	94-95 (LB4)	RH	3759755
	1.079	STUD, W/PMP (*4, 7) (5/16-24 X 3/8-16 X 2 9/16) (1.073)	90-92 (LB4)	RH	3759755
34.	1.079	BOLT, W/PMP (3/8-16 X 1 3/4 CAD) (HEX) (*1, 2, 3, 5, 6, 8, 9, 10, 11, 12) (8.900)	90-93 (LB4)	1	9439637
	1.079	BOLT, W/PMP (3/8-16 X 1 3/4 CAD) (HEX) (*4, 7) (8.900)	90-92 (LB4)	1	9439637

1.079	BOLT, W/PMP (*15, 16, 17, 18, 19, 20, 21, 22, 23, 24, 27) (3/8-16 X 1 3/4 CAD) (HEX) (8.900)	90 I (LB4)	1	9439637
1.079	BOLT, W/PMP (3/8-16X2 1/4) (*13) (8.900)	91 I (LB4)	1	9442012
1.079	BOLT, W/PMP (3/8-16 X 1 3/4 CAD) (HEX) (*14, 15, 17, 18, 24, 27) (8.900)	93 I (LB4)	1	9439637
1.079	BOLT, W/PMP (3/8-16X2 1/4) (*13) (8.900)	93 I (LB4)	1	9442012
1.079	BOLT, W/PMP (3/8-16 X 1 3/4 CAD) (HEX) (*17, 18, 24, 27, 28, 32) (8.900)	94-95 I (LB4)	1	9439637
1.079	BOLT, W/PMP (3/8-16X2 1/4) (*31) (8.900)	95 I (LB4)	1	9442012
1.079	BOLT, W/PMP (3/8-16 X 1 3/4 CAD) (HEX) (*17, 18, 24, 27) (8.900)	96 I (L35)	1	9439637
1.079	BOLT, W/PMP (3/8-16X2.12) (*21, 28, 31)	96 I (L35)	1	12552096
1.069	PUMP, WAT (*1, 2, 3, 6, 8, 10, 11, 12) (AC-DELCO #251-483) (INCL 31, 104, 105, 106, 107) ...	90-93 I (LB4)	1	10181386
1.069	PUMP, WAT (*1, 2, 3, 6, 8, 10, 11, 12)	90-93 I (LB4)	1	12529082
1.069	PUMP, WAT (*13) (AC-DELCO #12522031) (INCL 31, 105, 106, 107)	91 I (LB4)	1	12522031
1.069	PUMP, WAT (*13) (AC-DELCO #12522031) (INCL 31, 105, 106, 107)	93 I (LB4)	1	12522031
1.069	PUMP, WAT (*14, 15, 17, 18, 24, 27) (AC-DELCO #251-483) (INCL 31, 104, 105, 106, 107) ...	93 I (LB4)	1	10181386
1.069	PUMP, WAT (*15, 16, 17, 18, 19, 20, 21, 22, 23, 24) (AC-DELCO #251-483) (INCL 31, 104, 105, 106, 107)	90 I (LB4)	1	10181386
1.069	PUMP, WAT (*17, 18, 24, 27) (AC-DELCO #251-483) (INCL 31, 104, 105, 106, 107)	94-95 I (LB4)	1	10181386
1.069	PUMP, WAT (*17, 18, 24, 28) ...	95 I (LB4)	1	12529082
1.069	PUMP, WAT (*28) (AC-DELCO #251-501)	94 I (LB4)	1	12522037
1.069	PUMP, WAT (*4, 7) (AC-DELCO #251-483) (INCL 31, 104, 105, 106, 107)	90-92 I (LB4)	1	10181386
1.069	PUMP, WAT (*5) (AC-DELCO #251-501)	93 I (LB4)	1	12522037
1.069	PUMP, WAT (14, 15, 17, 18, 24, 27) (AC-DELCO #251-483) (INCL 31, 104, 105, 106, 107) ...	93 I (LB4)	1	10181386
1.069	PUMP KIT, WAT (*17, 18, 24, 27) (AC-DELCO #251-568)	96 I (L35)	1	12529508
1.069	PUMP KIT, WAT (*28, 31, 32) (W/GASKET) (AC-DELCO #251-566)	96 I (L35)	1	12528917

	1.069	PUMP KIT, WAT (*28, 32) (AC-DELCO #12522031)	95 (LB4)	1	12522031
	1.069	PUMP KIT, WAT (*31) (AC-DELCO #12524131)	94-95 (LB4)	1	12524131
	1.069	PUMP KIT, WAT (*32) (AC-DELCO #12522031)	94 (LB4)	1	12522031
	1.069	PUMP KIT, WAT (*5) (AC-DELCO #251-501) (INCLS 31, 105, 106, 107)	90-93 (LB4)	1	12522037
36.	1.639	SHAFT, DISTR TO O/PMP INTER	85-95 (LB4)	1	3998287
	1.639	SHAFT, DISTR TO O/PMP INTER	96 (L35)	1	3998287
37.	0.206	PIN, O/PMP LOC (8.939)	85-95 (LB4)	AR	12554553
	0.206	PIN, O/PMP LOC (8.939)	96 (L35)	AR	12554553
38.	1.639	RETAINER, O/PMP DRV SHF ...	85-95 (LB4)	1	3764554
	1.639	RETAINER, O/PMP DRV SHF ...	96 (L35)	1	3764554
39.	1.652	PUMP, OIL (.620 DIA TUBE) (INCL 42, 43, 44, 45, 46, 47)	85-92 (LB4)	1	10055849
	1.652	PUMP, OIL (.742 DIA. TUBE) (INCL 42, 43, 44, 45, 46, 47)	95 (LB4)	1	12552643
	1.652	PUMP, OIL (.742 DIA. TUBE) (INCL 42, 43, 44, 45, 46, 47)	96 (L35)	1	12555283
	1.652	PUMP, OIL (.742 DIA. TUBE) (*5) (INCL 42, 43, 44, 45, 46, 47)	93 (LB4)	1	12552643
	1.652	PUMP, OIL (*1, 2, 3, 6, 8, 9, 10, 11, 12, 13, 14, 15, 17, 18, 24, 27) (.620 DIA TUBE)	93 (LB4)	1	10055849
40.	1.652	BOLT, O/PMP (7/16-14X2 3/8) .	85-95 (LB4)	1	10046007
	1.652	BOLT, O/PMP (7/16-14X2 3/8) .	96 (L35)	1	10046007
41.	1.656	SCREEN, O/PMP	96 (L35)	1	12555116
	1.656	SCREEN, O/PMP (*1, 2, 3, 4, 5, 6, 7, 8, 9, 11, 12) (.620 DIA. TUBE)	90-92 (LB4)	1	3764113
	1.656	SCREEN, O/PMP (*1, 2, 3, 6, 8, 9, 11, 12, 14, 15, 17, 18, 24, 27) (.620 DIA. TUBE)	93 (LB4)	1	3764113
	1.656	SCREEN, O/PMP (*10)	90-93 (LB4)	1	3855152
	1.656	SCREEN, O/PMP (*13)	91 (LB4)	1	10054773
	1.656	SCREEN, O/PMP (*13)	93 (LB4)	1	10054773
	1.656	SCREEN, O/PMP (*15, 16, 17, 18, 20, 21, 22, 23, 24) (.620 DIA. TUBE)	90 (LB4)	1	3764113
	1.656	SCREEN, O/PMP (*17, 18, 21, 24, 27, 28, 31) (.742 DIA TUBE) .	95 (LB4)	1	10166159
	1.656	SCREEN, O/PMP (*19)	90 (LB4)	1	3855152
	1.656	SCREEN, O/PMP (*25) (.620 DIA. TUBE)	85-86 (LB4)	1	3764113
	1.656	SCREEN, O/PMP (*26) (.620 DIA. TUBE)	85-91 (LB4)	1	3764113
	1.656	SCREEN, O/PMP (*5) (.742 DIA TUBE)	93 (LB4)	1	10166159
42.	1.609	PLUG, OIL PRESS RLF VLV BORE (PART OF 39, 47) (CHAM ENDS, STL) (NON-THD 7/16 DIA, 13/32 LGTH)	85-93 (LB4)	1	3704871
	1.609	PLUG, OIL PRESS RLF VLV BORE (PART OF 39, 47) (CHAM ENDS, STL) (NON-THD 7/16 DIA, 13/32 LGTH)	95 (LB4)	1	3704871

	1.609	PLUG, OIL PRESS RLF VLV BORE (PART OF 39, 47) (CHAM ENDS, STL) (NON-THD 7/16 DIA, 13/32 LGTH)	96 I (L35)	1	3704871
43.	1.609	VALVE, OIL PRESS RLF (PART OF 39, 47)	85-93 I (LB4)	1	3702366
	1.609	VALVE, OIL PRESS RLF (PART OF 39, 47)	95 I (LB4)	1	3702366
	1.609	VALVE, OIL PRESS RLF (PART OF 39, 47)	96 I (L35)	1	3702366
44.	1.609	SPRING, OIL PRESS RLF VLV ..	85-93 I (LB4)	1	10044435
	1.609	SPRING, OIL PRESS RLF VLV ..	95 I (LB4)	1	10044435
	1.609	SPRING, OIL PRESS RLF VLV ..	96 I (L35)	1	10044435
45.	1.723	BOLT, O/PMP CVR (PART OF 39) (M6X1X20 9.8 PZOR) (8.900) (AC-DELCO #11508600)	85-93 I (LB4)	2	11508600
	1.723	BOLT, O/PMP CVR (PART OF 39) (M6X1X20 9.8 PZOR) (8.900) (AC-DELCO #11508600)	95 I (LB4)	2	11508600
	1.723	BOLT, O/PMP CVR (PART OF 39) (M6X1X20 9.8 PZOR) (8.900) (AC-DELCO #11508600)	96 I (L35)	2	11508600
46.	1.609	PIN, OIL PRESS RLF VLV SPR ST (PART OF 39, 47)	85-93 I (LB4)	1	838839
	1.609	PIN, OIL PRESS RLF VLV SPR ST (PART OF 39, 47)	95 I (LB4)	1	838839
	1.609	PIN, OIL PRESS RLF VLV SPR ST (PART OF 39, 47)	96 I (L35)	1	838839
47.	1.723	COVER, O/PMP (PART OF 39) (INCL 42, 43, 44, 46) (.620 DIA. TUBE)	85-92 I (LB4)	1	14046552
	1.723	COVER, O/PMP (PART OF 39) (INCL 42, 43, 44, 46) (INCLS PLUG, VALVE, SPRING & PIN) ..	95 I (LB4)	1	10168528
	1.723	COVER, O/PMP (PART OF 39) (INCL 42, 43, 44, 46) (INCLS PLUG, VALVE, SPRING & PIN) ..	96 I (L35)	1	10168528
	1.723	COVER, O/PMP (*1, 2, 3, 6, 8, 10, 11, 12, 13, 14, 15, 17, 18, 24, 27) (PART OF 39) (INCL 42, 43, 44, 46) (.620 DIA. TUBE)	93 I (LB4)	1	14046552
	1.723	COVER, O/PMP (*5) (PART OF 39) (INCL 42, 43, 44, 46) (INCLS PLUG, VALVE, SPRING & PIN) ..	93 I (LB4)	1	10168528
48.	1.855	FITTING, OIL FLTR	94-95 I (LB4)	1	14081300
	1.855	FITTING, OIL FLTR	96 I (L35)	1	14081300
	1.855	FITTING, OIL FLTR (*1, 2, 3, 5, 6, 8, 9, 10, 11, 12)	90-92 I (LB4)	1	14081300
	1.855	FITTING, OIL FLTR (*1, 2, 3, 5, 6, 8, 9, 10, 11, 12, 14, 15, 17, 18, 24, 27)	93 I (LB4)	1	14081300
	1.855	FITTING, OIL FLTR (*13)	91 I (LB4)	1	14081300
	1.855	FITTING, OIL FLTR (*15, 16, 17, 18, 19, 20, 21, 22, 23, 24)	90 I (LB4)	1	14081300
49.	1.855	FITTING, OIL FLTR (*4, 7)	90-92 I (LB4)	1	14081300
	1.836	FILTER, OIL (PF52) (INCORPORATES ANTI-DRAINBACK FEATURE) (*5) (AC-DELCO #PF52)	93 I (LB4)	1	25160560

	1.836	FILTER, OIL (PF52) (INCORPORATES ANTI-DRAINBACK FEATURE) (*5) (AC-DELCO #PF52)	93 (LB4)	1	25171377
	1.836	FILTER, OIL (PF52) (INCORPORATES ANTI-DRAINBACK FEATURE) (AC-DELCO #PF52)	94-95 (LB4)	1	25160560
	1.836	FILTER, OIL (PF52) (INCORPORATES ANTI-DRAINBACK FEATURE) (AC-DELCO #PF52)	94-95 (LB4)	1	25171377
	1.836	FILTER, OIL (PF52) (INCORPORATES ANTI-DRAINBACK FEATURE) (AC-DELCO #PF52)	96 (L35)	1	25171377
50.	0.673	GEAR, FLYWHL RING (PART OF 108)	94-95 (LB4)	1	460583
	0.673	GEAR, FLYWHL RING (PART OF 108)	96 (L35)	1	460583
	0.673	GEAR, FLYWHL RING (*1, 6) (PART OF 108)	90-93 (LB4)	1	3991407
	0.673	GEAR, FLYWHL RING (*13, 14, 15, 17, 18, 24, 27) (PART OF 108)	93 (LB4)	1	460583
	0.673	GEAR, FLYWHL RING (*15, 16, 17, 18, 19, 20, 23, 24) (PART OF 108)	90 (LB4)	1	460583
	0.673	GEAR, FLYWHL RING (*2, 3, 5, 8, 9, 10, 11, 12) (PART OF 108) ...	90-93 (LB4)	1	460583
	0.673	GEAR, FLYWHL RING (*21, 22) (PART OF 108)	90 (LB4)	1	3991407
	0.673	GEAR, FLYWHL RING (*4, 7) (PART OF 108)	90-92 (LB4)	1	460583
51.	0.669	WEIGHT, FLYWHL (PIN GROOVE) (8.940)	85-95 (LB4)	AR	274584
	0.669	WEIGHT, FLYWHL (PIN GROOVE) (8.940)	96 (L35)	AR	274584
52.	0.669	BOLT, FLYWHL (*1, 2, 3, 5, 6, 8, 9, 11, 12) (HWH, 7/16-20X.97, .75 THD, .745 OD, 300M.)	90-93 (LB4)	6	12337973
	0.669	BOLT, FLYWHL (*10) (7/16-20X.7) (0.685)	90-93 (LB4)	6	14088764
	0.669	BOLT, FLYWHL (*13) (7/16-20X.7) (0.685)	91 (LB4)	6	14088764
	0.669	BOLT, FLYWHL (*13) (7/16-20X.7) (0.685)	93 (LB4)	6	14088764
	0.669	BOLT, FLYWHL (*14, 15, 17, 18, 24, 27) (HWH, 7/16-20X.97, .75 THD, .745 OD, 300M.)	93 (LB4)	6	12337973
	0.669	BOLT, FLYWHL (*15, 16, 17, 18, 20, 21, 22, 23, 24)	90 (LB4)	6	12337973
	0.669	BOLT, FLYWHL (*17, 18, 21, 24, 27) (HWH, 7/16-20X.97, .75 THD, .745 OD, 300M.)	95 (LB4)	6	12337973
	0.669	BOLT, FLYWHL (*17, 18, 21, 24, 27, 28, 31) (HWH, 7/16-20X.97, .75 THD, .745 OD, 300M.)	94 (LB4)	6	12337973

				OM00-003D
	0.669	BOLT, FLYWHL (*18, 24, 27, 28, 32) (HWH, 7/16-20X.97, .75 THD, .745 OD, 300M.)	96 I (L35)	6 12337973
	0.669	BOLT, FLYWHL (*19) (0.685)	90 I (LB4)	6 14088764
	0.669	BOLT, FLYWHL (*28, 31) (7/16-20X.7) (0.685)	95 I (LB4)	6 14088764
	0.669	BOLT, FLYWHL (*4, 7) (HWH, 7/16-20X.97, .75 THD, .745 OD, 300M.)	90-92 I (LB4)	6 12337973
53.	0.669	PIN, FLYWHL LOC (7/16 DIA. X 7/8)	85-95 I (LB4)	1 3701679
	0.669	PIN, FLYWHL LOC (7/16 DIA. X 7/8)	96 I (L35)	1 3701679
54.	0.137	SEAL, CR/SHF RR OIL (PART OF 71)	93-95 I (LB4)	1 10088158
	0.137	SEAL, CR/SHF RR OIL (PART OF 71)	96 I (L35)	1 10088158
	0.137	SEAL, CR/SHF RR OIL (*1, 2, 3, 5, 6, 8, 9, 10, 11, 12) (PART OF 71)	90-92 I (LB4)	1 10088158
	0.137	SEAL, CR/SHF RR OIL (*13) (PART OF 71)	91 I (LB4)	1 10088158
	0.137	SEAL, CR/SHF RR OIL (*15, 16) (PART OF 71)	90 I (LB4)	1 14096051
	0.137	SEAL, CR/SHF RR OIL (*17, 18, 19, 20, 21, 22, 23, 24) (PART OF 71)	90 I (LB4)	1 10088158
	0.137	SEAL, CR/SHF RR OIL (*25) (PART OF 71)	85-86 I (LB4)	1 10088158
	0.137	SEAL, CR/SHF RR OIL (*26) (PART OF 71)	85-91 I (LB4)	1 10088158
	0.137	SEAL, CR/SHF RR OIL (*4, 7) (PART OF 71)	90-92 I (LB4)	1 10088158
55.	0.646	CRANKSHAFT, ENG (INCL 53) (USES SINGLE CRANKSHAFT KEY #14089209)	85-94 I (LB4)	1 10224877
	0.646	CRANKSHAFT, ENG (INCL 53)	95 I (LB4)	1 10224880
56.	0.646	CRANKSHAFT, ENG (INCL 53)	96 I (L35)	1 10224880
57.	0.206	PIN, ENG FRT CVR LOC (8.939)	85-94 I (LB4)	2 12554553
	0.207	GASKET, ENG FRT CVR (PART OF FRONT COVER ONLY NOT SERVICED SEPERATELY FOR 1995 & 1996 SEE ITEM #61)	95-96	
	0.207	GASKET, ENG FRT CVR	85-92 I (LB4)	1 10108435
	0.207	GASKET, ENG FRT CVR (*1, 2, 3, 5, 6, 8, 9, 10, 11, 12, 13)	93 I (LB4)	1 10108435
	0.207	GASKET, ENG FRT CVR (*14, 15, 17, 18, 24, 27)	93 I (LB4)	1 10077694
	0.207	GASKET, ENG FRT CVR (*17, 18, 21, 24, 27, 28, 31)	94 I (LB4)	1 10077694
58.	0.659	BALANCER, CR/SHF (*1, 2, 3, 5, 6, 7, 8, 10, 11, 15, 16, 17, 18, 19, 20, 21, 22)	90 I (LB4)	1 14097259
	0.659	BALANCER, CR/SHF (*1, 2, 3, 5, 6, 8, 10, 11)	92-93 I (LB4)	1 14097259
	0.659	BALANCER, CR/SHF (*13) (EXTERNAL)	91 I (LB4)	1 10172764
	0.659	BALANCER, CR/SHF (*13) (EXTERNAL)	93 I (LB4)	1 10172764

	0.659	BALANCER, CR/SHF (*14, 15, 17, 18, 24, 27) (ASM FOR ADDED INFORM) (MAY USE W/00274584 WEIGHT, CR/SHF BAL) (SEE ENGINE ASM MANUAL ASM FOR INFORMATION.)	93 I (LB4)	1	10222824
	0.659	BALANCER, CR/SHF (*17, 18, 21, 24, 27, 31)	95 I (LB4)	1	12553165
	0.659	BALANCER, CR/SHF (*17, 18, 24, 27, 28) (ASM FOR ADDED INFORM) (MAY USE W/00274584 WEIGHT, CR/SHF BAL) (SEE ENGINE ASM MANUAL ASM FOR INFORMATION.)	94 I (LB4)	1	10222824
	0.659	BALANCER, CR/SHF (*17, 18, 24, 27, 28, 31, 32)	96 I (L35)	1	12553165
	0.659	BALANCER, CR/SHF (*23, 24)	90 I (LB4)	1	12551537
	0.659	BALANCER, CR/SHF (*25)	85-86 I (LB4)	1	10172764
	0.659	BALANCER, CR/SHF (*26)	85-91 I (LB4)	1	14097259
	0.659	BALANCER, CR/SHF (*28) (EXTERNAL)	95 I (LB4)	1	10172764
	0.659	BALANCER, CR/SHF (*4)	90-92 I (LB4)	1	12551537
	0.659	BALANCER, CR/SHF (*7)	92 I (LB4)	1	14097259
	0.659	BALANCER, CR/SHF (*9, 12)	90-93 I (LB4)	1	12551537
59.	0.056	STUD, CR/SHF BRG CAP (3/8-16X7/16-14X5 5/8) (*15, 16, 20)	90 I (LB4)		14087508
	0.056	STUD, CR/SHF BRG CAP (REPLACE INTER LH & RH AND LH INTER MAIN BRG CAP BOLTS W/STUD) (SEE 8) (3/8-16X7/16-14X5 5/8) (*11)	90-93 I (LB4)		14087508
60.	0.206	BOLT, ENG FRT CVR (, 300M, PC) (1/4-20 X 1/2, 1/8 THD) (8.900)	94 I (LB4)	10	9442895
	0.206	BOLT, ENG FRT CVR (HWH 1/4-20 THD SHLD LEN .41)	95 I (LB4)	3	10213293
	0.206	BOLT, ENG FRT CVR (HWH 1/4-20 THD SHLD LEN .41)	96 I (L35)	3	10213293
	0.206	BOLT, ENG FRT CVR (*1, 6, 14, 15) (HFH 1/4-20X.56 280M PZOR) (8.900)	93 I (LB4)	1	9439930
	0.206	BOLT, ENG FRT CVR (*2, 3, 5, 8, 9, 10, 11, 12, 13, 17, 18, 24, 27) (, 300M, PC) (1/4-20 X 1/2, 1/8 THD) (8.900)	93 I (LB4)	10	9442895
	0.206	BOLT, ENG FRT CVR (CENTER OF COVER) (HWH 1/4-20 THD SHLD LEN .92)	95 I (LB4)	2	12551135
	0.206	BOLT, ENG FRT CVR (CENTER OF COVER) (HWH 1/4-20 THD SHLD LEN .92)	96 I (L35)	2	12551135
61.	0.206	COVER, ENG FRT (INCLS CVR, RET & SEAL)	94 I (LB4)	1	12550706
	0.206	COVER, ENG FRT (GASKET MOLDED TO COVER) (FRT GASKET IS MOLDED TO COVER)	95 I (LB4)	1	12550014

0.206	COVER, ENG FRT (*1, 2, 3, 4, 5, 6, 7, 8, 9, 10, 11, 12) (LESS POINTER)	90-91 (LB4)	1	10243967	
0.206	COVER, ENG FRT (*1, 2, 3, 5, 6, 8, 9, 10, 11, 12) (W/WELDER POINTER)	92 (LB4)	1	12513961	
0.206	COVER, ENG FRT (*1, 2, 3, 5, 6, 8, 9, 10, 11, 12) (EXC SEAL, SEALER, RETAINER)	93 (LB4)	1	10046160	
0.206	COVER, ENG FRT (*1, 6) (W/WELDED POINTER)	93 (LB4)	1	12513961	
0.206	COVER, ENG FRT (*13, 17, 18, 19, 20, 21, 22, 23, 24)	90 (LB4)	1	10243967	
0.206	COVER, ENG FRT (*14, 15) (INCLS CVR & INDICATOR)	93 (LB4)	1	12523080	
0.206	COVER, ENG FRT (*14, 17, 18, 24, 27) (INCLS CVR, RET & SEAL)	93 (LB4)	1	12550706	
0.206	COVER, ENG FRT (*15, 16)	90 (LB4)	1	12513955	
0.206	COVER, ENG FRT (*2, 3, 5, 8, 9, 10, 11, 12) (LESS POINTER) (INCL CVR, SEAL, SEALER, RETAINER)	93 (LB4)	1	10243967	
0.206	COVER, ENG FRT (*25) (W/WELDER POINTER)	85-86 (LB4)	1	12513961	
0.206	COVER, ENG FRT (*26) (W/WELDED POINTER)	85-91 (LB4)	1	12513961	
0.206	COVER, ENG FRT (*4, 7) (W/WELDER POINTER)	92 (LB4)	1	12513961	
0.206	COVER, ENG FRT (USE W/12551788 STUD QTY 01, 10213294 GROMMET QTY 06, 12551135 BOLT QTY 02, 10213293 BOLT QTY 03.) (FRT GASKET IS MOLDED TO COVER)	96 (L35)	1	12554557	
62.	0.662	KEY, CR/SHF BAL (LENGTH, 36.7 MM) (WIDTH 4.77MM) (8.960)	93-95 (LB4)	1	14089209
	0.662	KEY, CR/SHF BAL (LENGTH, 36.7 MM) (WIDTH 4.77MM) (8.960)	96 (L35)	1	14089209
	0.662	KEY, CR/SHF BAL (*1, 2, 3, 4, 5, 6, 7, 8, 9, 10, 11, 12) (LENGTH, 36.7 MM) (WIDTH 4.77MM) (8.960)	90-92 (LB4)	1	14089209
	0.662	KEY, CR/SHF BAL (*25) (8.960)	85-86 (LB4)	2	106751
	0.662	KEY, CR/SHF BAL (*26) (#9 .187X.750 PL) (8.960)	85-91 (LB4)	2	106751
63.	0.096	BEARING KIT, CR/SHF (#1, 2, 3) (.0006 US)	85-93 (LB4)	3	12513950
	0.096	BEARING KIT, CR/SHF (#1, 2, 3) (.001 U.S)	85-95 (LB4)	3	10120992
	0.096	BEARING KIT, CR/SHF (#1, 2, 3) (.001 U.S)	85-93 (LB4)	3	10120992
	0.096	BEARING KIT, CR/SHF (#1, 2, 3) (STD)	85-95 (LB4)	3	10120990
	0.096	BEARING KIT, CR/SHF (#1, 2, 3) (.010 U.S.)	85-95 (LB4)	3	12329428
	0.096	BEARING KIT, CR/SHF (#1, 2, 3) (.0006 US)	85-95 (LB4)	3	12513950

	0.096	BEARING KIT, CR/SHF (#1, 2, 3) (STD) (.001 U.S.)	96 I (L35)	3	10120992
	0.096	BEARING KIT, CR/SHF (#1, 2, 3)	96 I (L35)	3	10120990
	0.096	BEARING KIT, CR/SHF (#1, 2, 3) (.010 U.S.)	96 I (L35)	3	12329428
	0.096	BEARING KIT, CR/SHF (#1, 2, 3) (.0006 US)	96 I (L35)	3	12513950
64.	0.096	BEARING KIT, CR/SHF (RR #5) (STD)	85-95 I (LB4)	1	10120993
	0.096	BEARING KIT, CR/SHF (RR #5) (STD)	96 I (L35)	1	10120993
	0.096	BEARING KIT, CR/SHF (RR #5) (.001 U.S./STD FLG) (RR #5)	85-95 I (LB4)	1	12528826
	0.096	BEARING KIT, CR/SHF (RR #5) (.001 U.S./STD FLG) (RR #5)	96 I (L35)	1	12528826
	0.096	BEARING KIT, CR/SHF (RR #5) (.010 U.S./STD FLG) (RR #5)	85-95 I (LB4)	1	12329793
	0.096	BEARING KIT, CR/SHF (RR #5) (.010 U.S./STD FLG) (RR #5)	96 I (L35)	1	12329793
	0.096	BEARING KIT, CR/SHF (RR #5) (.020" U.S./STD FLG)	85-95 I (LB4)	1	12329794
	0.096	BEARING KIT, CR/SHF (RR #5) (.020" U.S./STD FLG)	96 I (L35)	1	12329794
	0.096	BEARING KIT, CR/SHF (RR #5) (.002 U.S./STD FLG) (.002 U.S.)	85-95 I (LB4)	1	12329792
	0.096	BEARING KIT, CR/SHF (RR #5) (.002 U.S./STD FLG) (.002 U.S.)	96 I (L35)	1	12329792
65.	0.056	BOLT, CR/SHF BRG CAP (7/16-14X3 11/32)	85-95 I (LB4)	10	3932480
	0.056	BOLT, CR/SHF BRG CAP (7/16-14X3 11/32)	96 I (L35)	10	3932480
66.	N.S.	CAP, CR/SHF BRG	85-96 I (LB4, L35)		
	N.S.	CAP, CR/SHF BRG	85-96 I (LB4, L35)		
67.	0.137	GASKET, CR/SHF RR OIL SEAL HSG	85-95 I (LB4)	1	12337823
68.	0.137	STUD, CR/SHF RR OIL SEAL RET (5/16X18X1 43/64, 280M) (1.428)	85-95 I (LB4)	2	14080362
	0.137	STUD, CR/SHF RR OIL SEAL RET (1/4-20 X 2.18)	85-95 I (LB4)	1	14101058
	0.137	STUD, CR/SHF RR OIL SEAL RET (5/16-18X.60, 5/16-18, 2.48-OAL, 280M, POR)	96 I (L35)	2	10218027
	0.137	STUD, CR/SHF RR OIL SEAL RET (1/4-20 X 2.18)	96 I (L35)	1	14101058
69.	0.137	BOLT, CR/SHF RR OIL SEAL HSG (1/4-20 X 7/8)	85-95 I (LB4)	2	14088561
	0.137	BOLT, CR/SHF RR OIL SEAL HSG (1/4-20 X 7/8)	96 I (L35)	2	14088561
70.	0.137	BOLT, CR/SHF RR OIL SEAL HSG (TORQ, 1/4-20 X 1.75)	85-95 I (LB4)	1	14088562
	0.137	BOLT, CR/SHF RR OIL SEAL HSG (TORQ, 1/4-20 X 1.75)	96 I (L35)	1	14088562
71.	0.137	HOUSING, CR/SHF RR OIL SEAL (INCL 54, 68)	93-95 I (LB4)	1	10108477
	0.137	HOUSING, CR/SHF RR OIL SEAL (INCL 54, 68)	96 I (L35)	1	12552218
	0.137	HOUSING, CR/SHF RR OIL SEAL (*12, 3, 4, 5, 6, 7, 8, 9, 10, 11, 12) (INCL 54, 68)	90-92 I (LB4)	1	10108477

	0.137	HOUSING, CR/SHF RR OIL SEAL (*13) (INCL 54, 68)	91 I (LB4)	1	10108477
	0.137	HOUSING, CR/SHF RR OIL SEAL (*15, 16) (INCL 54, 68)	90 I (LB4)	1	14096052
	0.137	HOUSING, CR/SHF RR OIL SEAL (*17, 18, 19, 20, 21, 22, 23, 24) (INCL 54, 68)	90 I (LB4)	1	10108477
	0.137	HOUSING, CR/SHF RR OIL SEAL (*25) (INCL 54, 68)	85-86 I (LB4)	1	10108477
	0.137	HOUSING, CR/SHF RR OIL SEAL (*26) (INCL 54, 68)	85-91 I (LB4)	1	10108477
72.	1.430	DEFLECTOR, CR/SHF OIL (*11)	90-93 I (LB4)	1	10166191
	1.430	DEFLECTOR, CR/SHF OIL (*15, 16, 20)	90 I (LB4)	1	10166191
73.	0.648	NUT, CR/SHF OIL DFL (*11) (3/8-16, 301M) (HEX LK/TORQ-TENS) (8.917)	90-93 I (LB4)	5	9422297
	0.648	NUT, CR/SHF OIL DFL (*15, 16, 20) (8.917)	90 I (LB4)	5	9422297
74.	1.429	GASKET, OIL PAN	85-95 I (LB4)	1	14088514
	1.429	GASKET, OIL PAN	96 I (L35)	1	10220906
75.	1.426	REINFORCEMENT, OIL PAN	85-95 I (LB4)	LH	10172765
	1.426	REINFORCEMENT, OIL PAN	85-95 I (LB4)	RH	10172766
76.	1.426	PAN, OIL (INCL 77, 78)	94-95 I (LB4)	1	10054809
	1.426	PAN, OIL (*1, 2, 3, 5, 6, 8, 9, 12) (INCL 77, 78)	90-92 I (LB4)	1	10054809
	1.426	PAN, OIL (*10) (INCL 77, 78)	90-93 I (LB4)	1	10055755
	1.426	PAN, OIL (*11) (INCL 77, 78)	90-93 I (LB4)	1	10054809
	1.426	PAN, OIL (*13) (INCL 77, 78)	91 I (LB4)	1	14097275
	1.426	PAN, OIL (*13) (INCL 77, 78)	93 I (LB4)	1	14097275
	1.426	PAN, OIL (*15, 16, 17, 18, 20, 21, 22, 23, 24) (INCL 77, 78)	90 I (LB4)	1	10054809
	1.426	PAN, OIL (*17, 18, 24, 27) (INCL 77, 78)	96 I (L35)	1	12554868
	1.426	PAN, OIL (*19) (INCL 77, 78)	90 I (LB4)	1	10055755
	1.426	PAN, OIL (*23, 31, 32) (INCL 77, 78)	96 I (L35)	1	12554508
	1.426	PAN, OIL (*25) (INCL 77, 78)	85-86 I (LB4)	1	14097275
	1.426	PAN, OIL (*26) (INCL 77, 78)	85-91 I (LB4)	1	14097275
	1.426	PAN, OIL (*4, 7) (INCL 77, 78) ..	90-92 I (LB4)	1	10054809
77.	1.456	GASKET, OIL PAN DRN PLUG (PART OF 76)	85-95 I (LB4)	1	14090908
78.	1.453	PLUG, OIL PAN DRN (1/2-20, .81LG, .44 THD LGTH, .88 FL H D DIA)	85-95 I (LB4)	1	3921988
	1.453	PLUG, OIL PAN DRN (M12X1.75X25, 26.60D,) (5.8, P.E.) (INCL SEAL, N.S.S.)	96 I (L35)	1	3536964
79.	1.428	BOLT, OIL PAN (HFH 1/4-20X.62 280M POR) (8.900)	93-95 I (LB4)	AR	9440033
	1.428	BOLT, OIL PAN	96 I (L35)	10	9442908
	1.428	BOLT, OIL PAN (*1, 2, 3, 4, 5, 6, 7, 8, 9, 10, 11, 12) (1/4-20X5/8 HH 280-ZP) (8.900) (AC-DELCO #180018)	90-92 I (LB4)	AR	180018

1.428	BOLT, OIL PAN (*1, 2, 3, 6, 8, 9, 10, 11, 13, 14, 15, 17, 18, 24, 27) (1/4-20X5/8 HH 280-ZP) (8.900) (AC-DELCO #180018)	93 (LB4)	AR	180018	
1.428	BOLT, OIL PAN (*13) (1/4-20X5/8 HH 280-ZP) (8.900) (AC-DELCO #180018)	91 (LB4)	AR	180018	
1.428	BOLT, OIL PAN (*13) (USED AT #1 LH & RH) (5/16-18 X 3/4, 300M) (HEX HD, STEEL) (8.900)	91 (LB4)	3	9424877	
1.428	BOLT, OIL PAN (*13) (USED AT #1 LH & RH) (5/16-18 X 3/4, 300M) (HEX HD, STEEL) (8.900)	93 (LB4)	3	9424877	
1.428	BOLT, OIL PAN (*13, 14, 15, 17, 18, 24, 27, 28) (1/4-20X5/8 HH 280-ZP) (8.900) (AC-DELCO #180018)	93-95 (LB4)	AR	180018	
1.428	BOLT, OIL PAN (*15, 16, 17, 18, 19, 20, 21, 22, 23, 24) (8.900) (AC-DELCO #180018)	90 (LB4)	AR	180018	
1.428	BOLT, OIL PAN (*25) (8.900)	85-86 (LB4)	10	9440033	
1.428	BOLT, OIL PAN (*26) (HFH 1/4-20X.62 280M POR) (8.900)	85-91 (LB4)	10	9440033	
80.	1.428	NUT, OIL PAN (5/16-18X20, 286M) (PC) (8.917)	93-95 (LB4)	2	1359887
	1.428	NUT, OIL PAN (5/16-18 X 1/4, 286M) (POR) (8.915)	93-95 (LB4)	2	12338130
	1.428	NUT, OIL PAN (5/16-18X20, 286M) (PC) (8.917)	96 (L35)	2	1359887
	1.428	NUT, OIL PAN (*1, 2, 3, 4, 5, 6, 7, 8, 9, 10, 11, 12) (5/16-18 X 1/4, 286M) (POR) (8.915)	90-92 (LB4)	2	12338130
	1.428	NUT, OIL PAN (*13) (5/16-18 X 1/4, 286M) (POR) (8.915)	91 (LB4)	2	12338130
	1.428	NUT, OIL PAN (*15, 16, 17, 18, 19, 20, 21, 22, 23, 24) (8.915) ...	90 (LB4)	2	12338130
	1.428	NUT, OIL PAN (*25) (8.917)	85-86 (LB4)	2	1359887
	1.428	NUT, OIL PAN (*26) (5/16-18X20, 286M) (PC) (8.917)	85-91 (LB4)	2	1359887
81.	1.428	STUD, OIL PAN (5/16X18X1 43/64, 280M)	94-95 (LB4)	2	14080362
	1.428	STUD, OIL PAN (*1, 2, 3, 4, 5, 6, 7, 8, 9, 10, 11, 12) (5/16X18X1 43/64, 280M)	90-92 (LB4)	2	14080362
	1.428	STUD, OIL PAN (*1, 2, 3, 5, 6, 8, 9, 10, 11, 12, 14, 15, 17, 18, 24, 27) (5/16X18X1 43/64, 280M) ...	93 (LB4)	2	14080362
	1.428	STUD, OIL PAN (*13) (5/16X18X1 43/64, 280M)	91 (LB4)	2	14080362
	1.428	STUD, OIL PAN (*13) (14X20X.56-1/4X20X.50)	91 (LB4)	4	14101092
	1.428	STUD, OIL PAN (*13) (14X20X.56-1/4X20X.50)	93 (LB4)	4	14101092
	1.428	STUD, OIL PAN (*15, 16, 17, 18, 19, 20, 21, 22, 23, 24)	90 (LB4)	2	14080362
	1.428	STUD, OIL PAN (*25)	85-86 (LB4)	4	14101092
	1.428	STUD, OIL PAN (*26) (14X20X.56-1/4X20X.50)	85-91 (LB4)	4	14101092

				OM00-003D
82.	1.531	PLUG, ENG BLK OIL PRESS C/OVR HOLE (CUP .476X.31) ...	92 I (LB4)	1 14091563
	1.531	PLUG, ENG BLK OIL PRESS C/OVR HOLE (*1, 2, 3, 4, 5, 6, 7, 8, 9, 10, 11, 12, 15, 16, 17, 18, 19, 20, 21, 22, 23, 24.)	90 I (LB4)	1 14091563
	1.531	PLUG, ENG BLK OIL PRESS C/OVR HOLE (*13) (CUP .476X.31)	91 I (LB4)	1 14091563
	1.531	PLUG, ENG BLK OIL PRESS C/OVR HOLE (*25)	85-86 I (LB4)	1 14091563
	1.531	PLUG, ENG BLK OIL PRESS C/OVR HOLE (*26) (CUP .476X.31)	85-91 I (LB4)	1 14091563
	1.531	PLUG, ENG BLK OIL GAL (1/4-18X0.56, STEEL) (8.971) (AC-DELCO #3889330)	85-95 I (LB4)	2 3889330
	1.531	PLUG, ENG BLK OIL GAL (3/8-18, 27/64 DEEP) (PEOR, STL) (8.971)	85-95 I (LB4)	1 14090911
	1.531	PLUG, ENG BLK OIL GAL (1/4-18X0.56, STEEL) (8.971) (AC-DELCO #3889330)	96 I (L35)	2 3889330
	1.531	PLUG, ENG BLK OIL GAL (3/8-18, 27/64 DEEP) (PEOR, STL) (8.971)	96 I (L35)	1 14090911
	1.531	PLUG, ENG BLK OIL GAL (*1, 6, 17, 18, 24, 27) (CUP .476X.31) ..	93 I (LB4)	1 14091563
	1.531	PLUG, ENG BLK OIL GAL (*17, 18, 24, 27, 28, 31, 32) (CUP .476X.31)	94-95 I (LB4)	1 14091563
	1.531	PLUG, ENG BLK OIL GAL (*17, 18, 24, 27, 28, 31, 32) (CUP .476X.31)	96 I (L35)	1 14091563
83.	0.213	SEAL, CR/SHF FRT OIL	93-94 I (LB4)	1 10243247
	0.213	SEAL, CR/SHF FRT OIL	95 I (LB4)	1 10128316
	0.213	SEAL, CR/SHF FRT OIL	96 I (L35)	1 10128316
	0.213	SEAL, CR/SHF FRT OIL (*1, 2, 3, 5, 6, 8, 9, 10, 11, 12)	90-92 I (LB4)	1 10243247
	0.213	SEAL, CR/SHF FRT OIL (*13) ..	91 I (LB4)	1 10243247
	0.213	SEAL, CR/SHF FRT OIL (*15) ..	90 I (LB4)	1 10243247
	0.213	SEAL, CR/SHF FRT OIL (*15) ..	90 I (LB4)	1 10244151
	0.213	SEAL, CR/SHF FRT OIL (*17, 18, 19, 20, 21, 22, 23, 24)	90 I (LB4)	1 10243247
	0.213	SEAL, CR/SHF FRT OIL (*25) ..	85-86 I (LB4)	1 10243247
	0.213	SEAL, CR/SHF FRT OIL (*26) ..	85-91 I (LB4)	1 10243247
	0.213	SEAL, CR/SHF FRT OIL (*4, 7) ..	90-92 I (LB4)	1 10243247
84.	0.137	NUT, CR/SHF RR OIL SEAL RET (HFH, 1/4-20X.234, 284M, 69K, POR, 240) (8.917)	85-95 I (LB4)	1 12337984
	0.137	NUT, CR/SHF RR OIL SEAL RET (HFH, 1/4-20X.234, 284M, 69K, POR, 240) (8.917)	96 I (L35)	1 12337984
86.	1.723	WASHER, O/PMP CVR (PART OF #39) (PART OF 39) (.263X.48X.072) (8.931) (AC-DELCO #9439510)	85-93 I (LB4)	3 9439510

	1.723	WASHER, O/PMP CVR (PART OF #39) (PART OF 39) (.263X.48X.072) (8.931) (AC-DELCO #9439510)	85-93 I (LB4)		
87.	2.383	PLUG, KNOCK SEN HOLE (1/4-18X0.56, STEEL) (8.971) (AC-DELCO #3889330)	93-95 I (LB4)	2	3889330
	2.383	PLUG, KNOCK SEN HOLE (1/4-18X0.56, STEEL) (8.971) (AC-DELCO #3889330)	96 I (L35)	2	3889330
	2.383	PLUG, KNOCK SEN HOLE (*1, 2, 3, 4, 6, 7, 8, 9, 10, 11, 12) (8.921)	90-91 I (LB4)	1	444777
	2.383	PLUG, KNOCK SEN HOLE (*1, 2, 3, 4, 6, 7, 8, 9, 10, 11, 12)	92 I (LB4)	1	10105889
	2.383	PLUG, KNOCK SEN HOLE (*13) (8.921)	91 I (LB4)	1	444777
	2.383	PLUG, KNOCK SEN HOLE (*15, 16, 17, 18, 19, 20, 21, 22, 23, 24) (8.921)	90 I (LB4)	1	444777
	2.383	PLUG, KNOCK SEN HOLE (*25) (8.971) (AC-DELCO #3889330)	85-86 I (LB4)	2	3889330
	2.383	PLUG, KNOCK SEN HOLE (*26) (1/4-18X0.56, STEEL) (8.971) (AC-DELCO #3889330)	85-91 I (LB4)	2	3889330
	2.383	PLUG, KNOCK SEN HOLE (*5) (8.921)	90-92 I (LB4)	1	444777
88.	0.659	BOLT, BAL SHF GR	94-95 I (LB4)	6	10105920
	0.659	BOLT, BAL SHF GR	96 I (L35)	6	10105920
	0.659	BOLT, BAL SHF GR (*14, 15, 17, 18, 24, 27)	93 I (LB4)	6	10105920
89.	0.659	GEAR, BAL SHF DRVN (INCLS DRIVE & DRIVEN GRS) (*14, 15, 17, 18, 24, 27, KIT1)	93 I (LB4)		12513234
	N.S.	GEAR, BAL SHF DRVN (*17, 18, 24, 27, 28, 31, 32, KIT1)	94-95 I (LB4)		
	N.S.	GEAR, BAL SHF DRVN (*17, 18, 24, 27, 28, 31, 32, KIT1)	96 I (L35)		
90.	0.659	RETAINER, BAL SHF	94-95 I (LB4)	1	10105915
	0.659	RETAINER, BAL SHF	96 I (L35)	1	10105915
	0.659	RETAINER, BAL SHF (*14, 15, 17, 18, 24, 27)	93 I (LB4)	1	10105915
91.	N.S.	BALANCER, (*14, 15)	93 I (LB4)	1	
	0.659	BALANCER, (INTERNAL)	94 I (LB4)	1	10224537
	0.659	BALANCER, (INTERNAL)	95 I (LB4)	1	10224538
	0.659	BALANCER, (INTERNAL)	96 I (L35)	1	10224538
	0.659	BALANCER, (*17, 18, 24, 27) (INTERNAL)	93 I (LB4)	1	10224537
92.	0.553	PLUG, BAL SHF RR BRG HOLE (CUP PLUG) (CUP W/CNTR INDENTATION, 53.48 O.D., 1010 STL, ZINC FLASH) (8.970)	94-95 I (LB4)	1	10241154
	0.553	PLUG, BAL SHF RR BRG HOLE (CUP PLUG) (CUP W/CNTR INDENTATION, 53.48 O.D., 1010 STL, ZINC FLASH) (8.970)	96 I (L35)	1	10241154

	0.553	PLUG, BAL SHF RR BRG HOLE (CUP PLUG) (*14, 15, 17, 18, 24, 27) (CUP W/CNTR INDENTATION, 53.48 O.D., 1010 STL, ZINC FLASH) (8.970)	93 I (LB4)	1	10241154
93.	N.S.	BEARING, BAL SHF RR (*14, 15)	93 I (LB4)	1	
	0.539	BEARING, BAL SHF RR	85-96		
94.	0.659	BOLT, BAL SHF RET (HEX SOCKET TORQ DR 1/4-20X.5, .47 OD) (0.529)	94-95 I (LB4)	2	14093637
	0.659	BOLT, BAL SHF RET (HEX SOCKET TORQ DR 1/4-20X.5, .47 OD) (0.529)	96 I (L35)	2	14093637
	0.659	BOLT, BAL SHF RET (*14, 15, 17, 18, 24, 27) (HEX SOCKET TORQ DR 1/4-20X.5, .47 OD) (0.529)	93 I (LB4)	2	14093637
95.	N.S.	GEAR, BAL SHF DRV (*14, 15, 17, 18, 24, 27, KIT1)	93 I (LB4)		12513234
	N.S.	GEAR, BAL SHF DRV (SERVICED IN PAIRS) (*17, 18, 24, 27, 28, 31, 32, KIT1)	94-95 I (LB4)		
	N.S.	GEAR, BAL SHF DRV (SERVICED IN PAIRS) (*17, 18, 24, 27, 28, 31, 32, KIT1)	96 I (L35)		
96.	0.738	STUD, CM/SHF SPKT (*14, 15, 17, 18, 24, 27)	93 I (LB4)	1	14099045
97.	2.383	SENSOR, KNOCK (*13) (AC-DELCO #213-92)	91 I (LB4)	1	10456031
	2.383	SENSOR, KNOCK (*13) (AC-DELCO #213-92)	93 I (LB4)	1	10456031
98.	1.840	GASKET, OIL FLTR PIPE ADAP (*13) (ROUND WITH ONE FLAT SIDE, BELL SHAPED CUTOUT)	91 I (LB4)	1	10172754
	1.840	GASKET, OIL FLTR PIPE ADAP (*13) (ROUND WITH ONE FLAT SIDE, BELL SHAPED CUTOUT)	93 I (LB4)	1	10172754
99.	1.840	ADAPTER, OIL FLTR PIPE (*13)	85-93 I (LB4)	1	12550116
100.	1.840	BOLT, OIL FLTR ADAP (*13) (HFH, 5/16-18X3.25, .94 THD, 280M, PZOR) (8.913)	91-93 I (LB4)	2	9441916
101.	1.844	SEAL, OIL FLTR ADAP (O RING) (*13)	91 I (LB4)	1	10244496
	1.844	SEAL, OIL FLTR ADAP (O RING) (*13)	93 I (LB4)	1	10244496
102.	1.800	SENSOR, F/PMP SW & ENG OIL PRESS GA (*13) (1/4-18 DRYSEAL THD) (3 TERM M/W 12048390 CONN) (AC-DELCO #10243574)	93 I (LB4)	1	10243574
103.	1.800	FITTING, F/PMP SW & ENG OIL PRESS GA SEN (*13) (SINGLE PORT 1/8-27 THD TO 1/4-18 THD 90 DEG (ZINC))	91 I (LB4)	1	12550760
	1.800	FITTING, F/PMP SW & ENG OIL PRESS GA SEN (*13) (SINGLE PORT 1/8-27 THD TO 1/4-18 THD 90 DEG (ZINC))	93 I (LB4)	1	12550760

				OM00-003D	
104.	1.073	PLUG, W/PMP (*1, 2, 3, 4, 6, 7, 8, 9, 10, 11, 12) (PLAIN) (SQ HD FILL & DRN 1/2-14X0.610.) (8.971)	90-93 I (LB4)	1	444746
	1.073	PLUG, W/PMP (*1, 2, 3, 4, 6, 8, 9, 10, 11, 12) (8.971)	90-92 I (LB4)	AR	143936
	1.073	PLUG, W/PMP (*1, 2, 3, 6, 8, 9, 10, 11, 12, 14, 15, 17, 18, 24, 27) (8.971)	93 I (LB4)	AR	143936
	1.073	PLUG, W/PMP (*1, 2, 3, 6, 8, 9, 10, 11, 12, 14, 15, 17, 18, 24, 27) (PLAIN) (SQ HD FILL & DRN 1/2-14X0.610.) (8.971)	93 I (LB4)	1	444746
	1.073	PLUG, W/PMP (*15, 17, 18, 19, 20, 21, 22, 23, 24) (8.971)	90 I (LB4)	AR	143936
	1.073	PLUG, W/PMP (*15, 17, 18, 19, 20, 21, 22, 23, 24) (8.971)	90 I (LB4)	1	444746
	1.073	PLUG, W/PMP (*17, 18, 24, 27) (PLAIN) (SQ HD FILL & DRN 1/2-14X0.610.) (8.971)	94-95 I (LB4)	1	444746
	1.073	PLUG, W/PMP (*17, 18, 24, 27) (PLAIN) (SQ HD FILL & DRN 1/2-14X0.610.) (8.971)	96 I (L35)	1	444746
	1.073	PLUG, W/PMP (*17, 18, 27, 28) (8.971)	94 I (LB4)	AR	143936
	1.073	PLUG, W/PMP (*4, 7) (8.971)	90-92 I (LB4)	AR	143936
	1.073	PLUG, W/PMP (*4, 7) (PLAIN) (SQ HD FILL & DRN 1/2-14X0.610.) (8.971)	90-92 I (LB4)	1	444746
105.	1.079	GASKET, W/PMP CVR (1.114)	93-95 I (LB4)	1	3782611
	1.079	GASKET, W/PMP CVR (1.114)	96 I (L35)	1	3782611
	1.079	GASKET, W/PMP CVR (*1, 2, 3, 4, 5, 6, 7, 8, 9, 10, 11, 12) (1.114)	90-93 I (LB4)	1	3782611
	1.079	GASKET, W/PMP CVR (*13) (1.114)	91 I (LB4)	1	3782611
	1.079	GASKET, W/PMP CVR (*15, 16, 17, 18, 19, 20, 21, 22, 23, 24) (1.114)	90 I (LB4)	1	3782611
	1.079	GASKET, W/PMP CVR (*4, 7) (1.114)	90-92 I (LB4)	1	3782611
106.	8.932	WASHER, INT-EXT TOOTH LK6.5IDX22.80DX 1.42 THK ZC (W/PMP CVR) (PART OF 35) (*1, 2, 3, 5, 6, 8, 9, 10, 11, 12) (AC-DELCO #11501045)	90-93 I (LB4)	AR	11501045
	8.932	WASHER, INT-EXT TOOTH LK6.5IDX22.80DX 1.42 THK ZC (W/PMP CVR) (PART OF 35) (*4, 7) (AC-DELCO #11501045)	90-92 I (LB4)	AR	11501045
	8.932	WASHER, INT-EXT TOOTH LK6.5IDX22.80DX 1.42 THK ZC (W/PMP CVR) (PART OF 35) (*15, 16) (AC-DELCO #11501045)	90 I (LB4)	AR	11501045
	8.932	WASHER, LK I .S. TOOTH (W/PMP CVR) (PART OF 35) (*17, 18, 19, 20, 21, 22, 23, 24)	90 I (LB4)	AR	120423

	8.932	WASHER, INT-EXT TOOTH LK6.5IDX22.80DX 1.42 THK ZC (W/PMP CVR) (PART OF 35) (*13) (AC-DELCO #11501045)	91 I (LB4)		
	8.932	WASHER, INT-EXT TOOTH LK6.5IDX22.80DX 1.42 THK ZC (W/PMP CVR) (PART OF 35) (*13, 14, 15, 17, 18, 24, 27, 28, 31, 32) (AC-DELCO #11501045)	93-95 I (LB4)		AR 11501045
	8.932	WASHER, INT-EXT TOOTH LK6.5IDX22.80DX 1.42 THK ZC (W/PMP CVR) (PART OF 35) (*17, 18, 24, 27, 28, 31, 32) (AC-DELCO #11501045)	96 I (L35)		AR 11501045
107.	1.073	BOLT, W/PMP CVR (*1, 2, 3, 5, 6, 8, 9, 10, 11, 12.) (1/4-20X1/2) (HEX HD) (8.900) (AC-DELCO #9442008) (PART OF 35)	90-93 I (LB4)	2	9442008
	1.073	BOLT, W/PMP CVR (*1, 2, 3, 6, 8, 9, 10, 11, 12, 13, 14, 15, 17, 18, 24, 27) (, 300M, PC) (1/4-20 X 1/2, 1/8 THD) (8.900)	93 I (LB4)	10	9442895
	1.073	BOLT, W/PMP CVR (*13) (1/4-20X1/2) (HEX HD) (8.900) (AC-DELCO #9442008) (PART OF 35)	91 I (LB4)	2	9442008
	1.073	BOLT, W/PMP CVR (*13, 14, 15, 17, 18, 24, 27, 28) (1/4-20X1/2) (HEX HD) (8.900) (AC-DELCO #9442008) (PART OF 35)	93-94 I (LB4)	2	9442008
	1.073	BOLT, W/PMP CVR (*15, 16) (8.900) (AC-DELCO #9442008) (PART OF 35)	90 I (LB4)	2	9442008
	1.073	BOLT, W/PMP CVR (*17, 18, 19, 20, 21, 22, 23, 24) (8.900)	90 I (LB4)	3	9440325
	1.073	BOLT, W/PMP CVR (*17, 18, 19, 20, 21, 22, 23, 24) (8.900) (AC-DELCO #9442008) (PART OF 35)	90 I (LB4)	2	9442008
	1.073	BOLT, W/PMP CVR (*17, 18, 24, 27, 28, 31, 32) (HFH 1/4-20X.56 280M PZOR) (8.900)	94-95 I (LB4)	6	9439930
	1.073	BOLT, W/PMP CVR (*17, 18, 24, 27, 31, 32) (, 300M, PC) (1/4-20 X 1/2, 1/8 THD) (8.900)	94 I (LB4)	10	9442895
	1.073	BOLT, W/PMP CVR (*28, 31, 32) (, 300M, PC) (1/4-20 X 1/2, 1/8 THD) (8.900)	95 I (LB4)	10	9442895
	1.073	BOLT, W/PMP CVR (*28, 31, 32) (, 300M, PC) (1/4-20 X 1/2, 1/8 THD) (8.900)	96 I (L35)	10	9442895
	1.073	BOLT, W/PMP CVR (*4, 7) (1/4-20X1/2) (HEX HD) (8.900) (AC-DELCO #9442008) (PART OF 35)	90-92 I (LB4)	2	9442008
108.	0.666	FLYWHEEL, ENG	94 I (LB4)	1	10222825
	0.666	FLYWHEEL, ENG (*1, 6)	90-93 I (LB4)	1	14096160
	0.666	FLYWHEEL, ENG (*10)	90-93 I (LB4)	1	14096047
	0.666	FLYWHEEL, ENG (*11)	90-93 I (LB4)	1	14096046

	0.666	FLYWHEEL, ENG (*13) (STEEL)	91 (LB4)	1	14088761
	0.666	FLYWHEEL, ENG (*13) (STEEL)	93 (LB4)	1	14088761
	0.666	FLYWHEEL, ENG (*14, 15, 17, 18, 24, 27)	93 (LB4)	1	10222825
	0.666	FLYWHEEL, ENG (*15, 16, 20)	90 (LB4)	1	14096046
	0.666	FLYWHEEL, ENG (*17, 18)	90 (LB4)	1	14096021
	0.666	FLYWHEEL, ENG (*17, 18, 24, 27)	95 (LB4)	1	14103282
	0.666	FLYWHEEL, ENG (*17, 18, 24, 27, 31)	96 (L35)	1	14103282
	0.666	FLYWHEEL, ENG (*19)	90 (LB4)	1	14096047
	0.666	FLYWHEEL, ENG (*2, 3, 5, 8)	90-93 (LB4)	1	14096021
	0.666	FLYWHEEL, ENG (*21, 22)	90 (LB4)	1	14096160
	0.666	FLYWHEEL, ENG (*23, 24)	90 (LB4)	1	14103282
	0.666	FLYWHEEL, ENG (*28, 32) (STEEL)	95 (LB4)	1	14088761
	0.666	FLYWHEEL, ENG (*28, 32) (STEEL)	96 (L35)	1	14088761
	0.666	FLYWHEEL, ENG (*31)	95 (LB4)	1	10105832
	0.666	FLYWHEEL, ENG (*4)	90-92 (LB4)	1	14103282
	0.666	FLYWHEEL, ENG (*7)	90-92 (LB4)	1	14096021
	0.666	FLYWHEEL, ENG (*9, 12)	90-93 (LB4)	1	14103282
109.	0.034	PLUG, ENG BLK COOL DRN HOLE (1/4-18X0.56, STEEL) (8.971) (AC-DELCO #3889330)	96 (L35)	2	3889330
	0.034	PLUG, ENG BLK COOL DRN HOLE (USED T/W 12346004 SEALANT) (1/4-18X0.56, STEEL) (8.971) (AC-DELCO #3889330)	85-95 (LB4)	2	3889330
	0.034	PLUG, ENG BLK COOL DRN HOLE (USED T/W 12346004 SEALANT) (1/4-18X0.56, STEEL) (8.971) (AC-DELCO #3889330)	96 (L35)	2	3889330
110.	0.219	INDICATOR, TMG	94 (LB4)	1	3991435
	0.219	INDICATOR, TMG (*1, 2, 3, 4, 5, 6, 7, 8, 9, 10, 11, 12)	90-92 (LB4)	1	3991435
	0.219	INDICATOR, TMG (*1, 2, 3, 5, 6, 8, 9, 10, 11, 12)	90-93 (LB4)	1	3991435
	0.219	INDICATOR, TMG (*13)	91 (LB4)	1	3991435
	0.219	INDICATOR, TMG (*14, 15, 17, 18, 24, 27, 28)	93-94 (LB4)	1	3991435
	0.219	INDICATOR, TMG (*17, 18, 19, 20, 21, 22, 23, 24)	90 (LB4)	1	3991435
	0.219	INDICATOR, TMG (*25)	85-86 (LB4)	1	3991435
	0.219	INDICATOR, TMG (*26)	85-91 (LB4)	1	3991435
112.	0.206	STUD, ENG FRT CVR	96 (L35)	1	12551788
113.	0.206	GROMMET, ENG FRT CVR	96 (L35)	6	10213294
114.	0.649	BEARING, CLU PILOT (*31) (NEEDLE BEARING 19/32 I.D. 3/32 O.D.X 3/4)	96 (L35)	1	14061685
115.	0.886	PLATE, CLU DRVN (*31)	96 (L35)	1	15968246
116.	0.859	CLUTCH KIT, ENG (W/CVR) (*31) (INCL #115) (10 SPLINES) (KIT INCL 1-15979229 PRESS PLT & 1-15708441 DRIVEN PLT) (W/DRVN PLATE)	96 (L35)	1	12381934

117.	0.862	WASHER, CLU PRESS PLT (*31) (#10X18.30) (LK) (8.931) (WASHER, BOLT *M10 HOLE SIZE X 18.30 OD X .117 THK) ...	96 I (L35)	OM00-003D AR 11500046
118.	0.862	BOLT, CLU PRESS PLT & CVR (*31) (3/8-16X1)	96 I (L35)	6 838653

SERVICE KITS

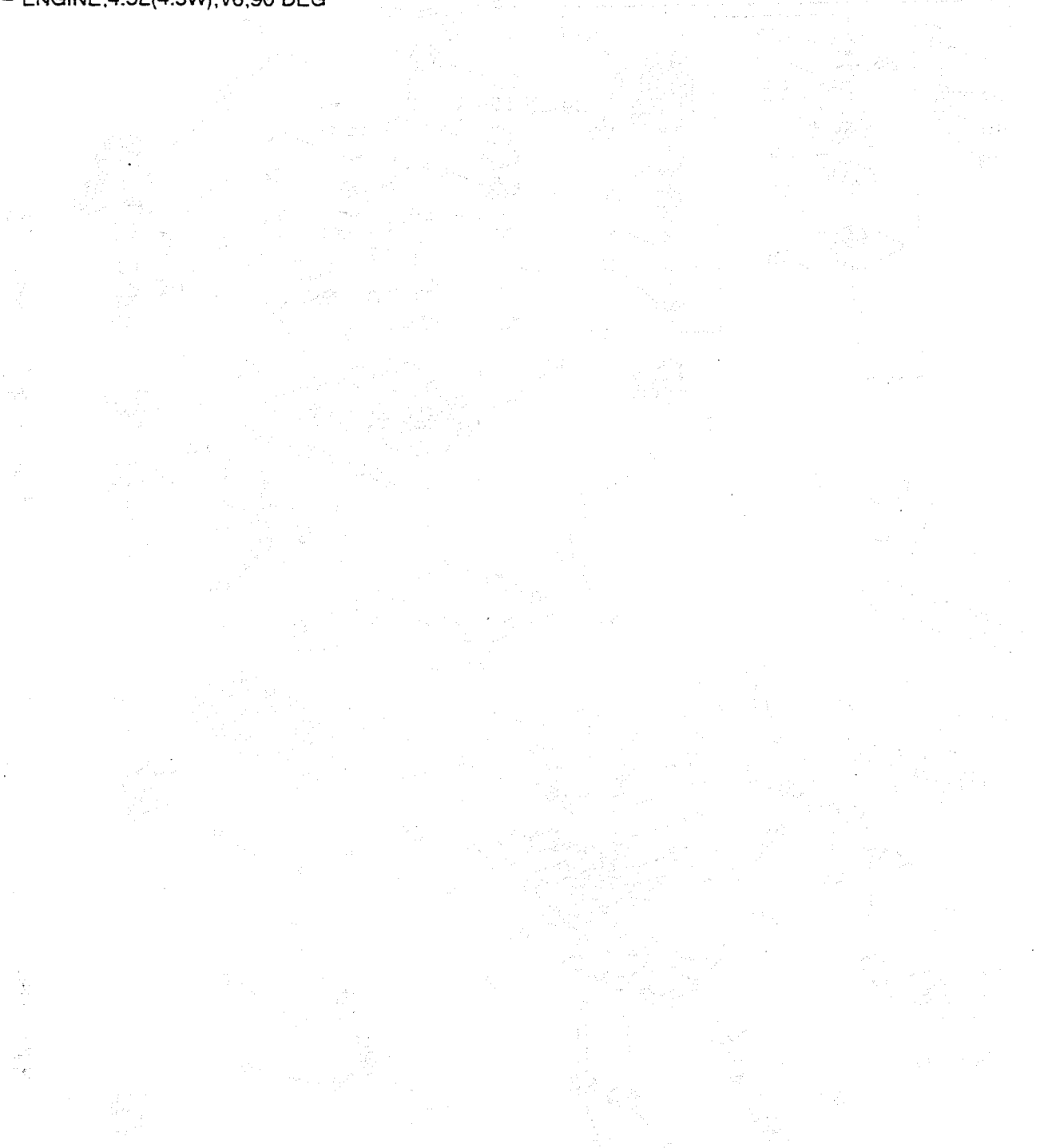
1.	0.659	GEAR KIT, BAL SHF (INCLS DRIVE & DRIVEN GRS) (INCL 89, 91)	94-96 I (LB4)	1 12513234
	0.659	GEAR KIT, BAL SHF (*14, 15, 17, 18, 24, 27) (INCLS DRIVE & DRIVEN GRS) (INCL 89, 91)	93 I (LB4)	1 12513234
2.	0.736	GEAR KIT, CM/SHF & CR/SHF (*15, 16) (OPP ROT) (0.728) (INCL 20, 21)	90 I (LB4) (4.3L OPP ROT MARINE ENG)	1 10174804

- NOTE 1: 4.3L 262 CID MARINE ENG. 1990 14096747 (OKS); 1991 14097161 (1KS); 1992 14097211 (2KS);
1993 14097301 (3KS).
- NOTE 2: 4.3L 262 CID MARINE ENG. 1990 14096745 (OKB); 1991 14097163 (1KB); 1992 14097212 (2KB);
1993 14097302 (3KB).
- NOTE 3: 4.3L 262 CID MARINE ENG. 1990 14096746 (OKP); 1991 14097165 (1KP); 1992 14097213 (2KP);
1993 14097303 (3KP).
- NOTE 4: 4.3L 262 CID MARINE ENG. 1990 14096976 (OKC); 1991 14097166 (1KC); 1992 14097216 (2KC).
- NOTE 5: 4.3L 262 CID INDUSTRIAL ENG. 1990 14096749 (OKM); 1991 14097168 (1KM); 1992 14097218
(2KM); 1993 14097306 (3KM).
- NOTE 6: 4.3L 262 CID MARINE ENG. 1990 14096748 (OKT); 1991 14097169 (1KT); 1992 14097219 (2KT);
1993 14097307 (3KT).
- NOTE 7: 4.3L 262 CID MARINE ENG. 1990 14096750 (OKJ); 1991 14097171 (1KJ); 1992 14097220 (2KJ).
- NOTE 8: 4.3L 262 CID MARINE ENG. 1990 14096752 (OKR); 1991 14097173 (1KR); 1992 14097221 (2KR);
1993 14097309 (3KR).
- NOTE 9: 4.3L 262 CID MARINE ENG. 1990 14096975 (OKA); 1991 14097174 (1KA); 1992 14097222 (2KA);
1993 14097310 (3KA).
- NOTE 10: 4.3L 262 CID MARINE ENG. 1990 14096751 (OKL); 1991 14097176 (1KL); 1992 14097223 (2KL);
1993 14097311 (3KL).
- NOTE 11: 4.3L 262 CID MARINE ENG. 1990 14096753 (OKF); 1991 14097178 (1KF); 1992 14097228 (2KF);
1993 14097312 (3KF).
- NOTE 12: 4.3L 262 CID MARINE ENG. 1990 14097265 (OKD); 1991 14097266 (1KD); 1992 14097217 (2KD);
1993 14097305 (3KD).
- NOTE 13: 4.3L 262 CID MARINE ENG. 1991 14097271 (1LD); 1993 14097442
(3LD), 1997 12555442 (7LD).
- NOTE 14: 4.3L 262 CID MARINE ENG. 1993 14097473 (3LG).
- NOTE 15: 4.3L 262 CID MARINE ENG. 1990 14096959 (0LH); 1993 14097474
(3LH).
- NOTE 16: 4.3L 262 CID MARINE ENG. 1990 14096754 (OKH).
- NOTE 17: 4.3L 262 CID MARINE ENG. 1990 14096953 (0LB); 1993 10228377 (3LB), 1994 10223771
(4LB), 1995 12550043 (5LB), 1996 12551081 (6LB), 1997 12556152 (
- NOTE 18: 4.3L 262 CID MARINE ENG. 1990 14096954 (0LJ); 1993 10224523 (3LJ), 1994 10223774
(4LJ), 1995 12550044 (5LJ), 1996 12552316 (6LJ), 1997 12556153 (7
- NOTE 19: 4.3L 262 CID MARINE ENG. 1990 14096955 (0LL).
- NOTE 20: 4.3L 262 CID MARINE ENG. 1990 14096958 (0LF).
- NOTE 21: 4.3L 262 CID MARINE ENG. 1990 14096960 (0LS).
- NOTE 22: 4.3L 262 CID MARINE ENG. 1990 14096961 (0LT).
- NOTE 23: 4.3L 262 CID MARINE ENG. 1990 14096978 (0LA), 1996 12552441 (7LA).
- NOTE 24: 4.3L 262 CID MARINE ENG. 1990 14096980 (0LC); 1993 10228378
(3LC), 1994 10235339 (4LC), 1995 12550048 (5LC), 1996 12552318 (6
- NOTE 25: 4.3L 262 CID MARINE ENG. 1985-86 12517970.
- NOTE 26: 4.3L 262 CID MARINE ENG. 1985-91 12517971.
- NOTE 27: 4.3L 262 CID MARINE ENG. 1993 10224525 (3LK), 1994 10223779
(4LK), 1995 12550047 (5LK), 1996 12552317 (6LK), 1997 12556154
- NOTE 28: 4.3L 262 CID INDUSTRIAL 1994 10223780
(4LM), 1995 12550049 (5LM), 1996 12552319 (6LM).
- NOTE 31: 4.3L 262 CID INDUSTRIAL 1994 12551717 (4LS), 1995
12551718 (5LS), 1996 12552320 (6LS).
- NOTE 32: 4.3L 262 CID INDUSTRIAL 1994 12552399 (4LX), 1995 12552400
(5LX), 1996 12552401 (6LX), 1997 12556158 (7LX).

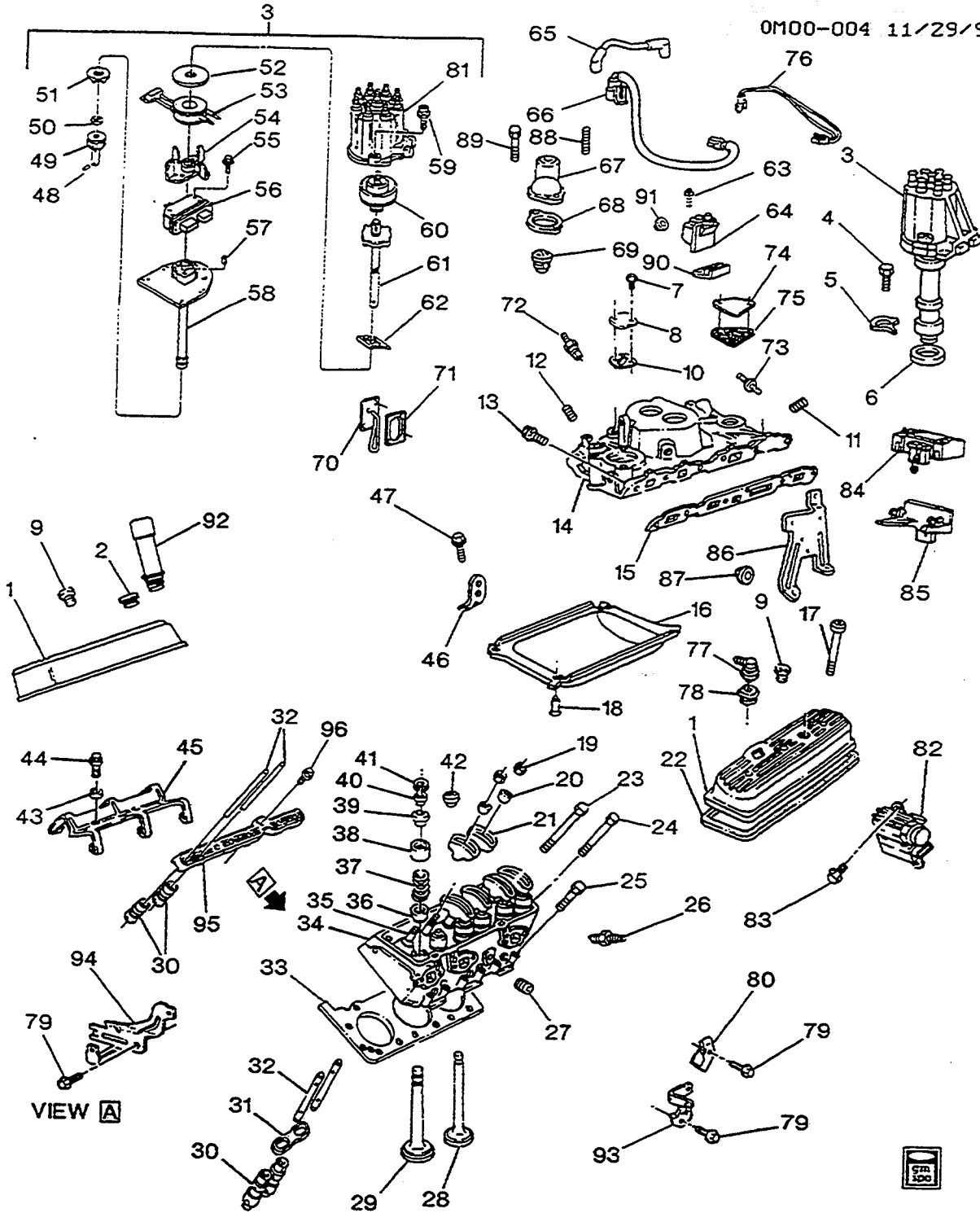
RPO DEFINITIONS

LB4 - ENGINE,(4.3L),V6 90 DEG GAS

L35 - ENGINE,4.3L(4.3W),V6,90 DEG



Faint, illegible text and table structure, likely a parts list or index, with columns and rows of text that cannot be read.



1985-1996 OEM ENGINE ASM-4.3L V6 PART 2

OM00-004D

1.

0.386	COVER, VLV RKR ARM	85-93 (LB4)	RH 14091554
0.386	COVER, VLV RKR ARM	94-95 (LB4)	RH 12554257
0.386	COVER, VLV RKR ARM	96 (L35)	RH 12554257
0.386	COVER, VLV RKR ARM (*1, 2, 3, 5, 6, 8, 9, 10, 11, 12)	90-93 (LB4)	LH 10046193
0.386	COVER, VLV RKR ARM (*13) ...	91 (LB4)	LH 10046193
0.386	COVER, VLV RKR ARM (*13, 14, 15, 17, 18, 24, 27)	93 (LB4)	LH 10046193
0.386	COVER, VLV RKR ARM (*15, 16, 17, 18, 19, 20, 21, 22, 23, 24) ...	90 (LB4)	LH 10046193

	0.386	COVER, VLV RKR ARM (*17, 18, 24, 27, 28)	94-95 (LB4)	LH	10201390
	0.386	COVER, VLV RKR ARM (*25) ...	85-86 (LB4)	LH	14091560
	0.386	COVER, VLV RKR ARM (*26) ...	85-91 (LB4)	LH	14091560
2.	0.386	COVER, VLV RKR ARM (*4, 7) ..	90-92 (LB4)	LH	10046193
	1.758	CAP, OIL FIL (AC-DELCO #FC162)	96 (L35)	1	10108694
	1.758	CAP, OIL FIL (*1, 2, 3, 5, 6, 8, 9, 10, 11, 12) (AC-DELCO #FC158)	90-93 (LB4)	1	10108650
	1.758	CAP, OIL FIL (*13) (AC-DELCO #FC158)	90 (LB4)	1	10108650
	1.758	CAP, OIL FIL (*13) (AC-DELCO #FC161)	93 (LB4)	1	1647547
	1.758	CAP, OIL FIL (*14, 15, 17, 18, 24, 27) (AC-DELCO #FC158)	93 (LB4)	1	10108650
	1.758	CAP, OIL FIL (*15, 16, 17, 18, 19, 20, 21, 22, 23, 24) (AC-DELCO #FC158)	90 (LB4)	1	10108650
	1.758	CAP, OIL FIL (*17, 18, 24, 27, 28, 31, 32) (AC-DELCO #FC162) ..	94-95 (LB4)	1	10108694
	1.758	CAP, OIL FIL (*25) (AC-DELCO #FC124)	85-86 (LB4)	1	10110858
	1.758	CAP, OIL FIL (*26) (AC-DELCO #FC180)	85-91 (LB4)	1	12551757
	1.758	CAP, OIL FIL (*4, 7) (AC-DELCO #FC158)	90-92 (LB4)	1	10108650
3.	2.361	DISTRIBUTOR, (*4, 7)	90-92 (LB4)	1	14095800
	2.361	DISTRIBUTOR, (*2, 10)	90-91 (LB4)	1	14095800
	2.361	DISTRIBUTOR, (INCL 48, 49, 50, 51, 52, 53, 54, 55, 56, 57, 58, 59, 60, 61, 62, 81) (*15, 17, 18, 19, 20, 21, 22, 24)	90 (LB4)		1103798
	N.S.	DISTRIBUTOR, (*5)	90-91 (LB4)		
	N.S.	DISTRIBUTOR, (INCL 48, 49, 50, 51, 52, 53, 54, 55, 56, 57, 58, 59, 60, 61, 62, 81) (*2, 10)	92-93 (LB4)		
	N.S.	DISTRIBUTOR, (*5)	92 (LB4)		
	N.S.	DISTRIBUTOR, (INCL 48, 49, 50, 51, 52, 53, 54, 55, 56, 57, 58, 59, 60, 61, 62, 81) (*17, 24)	93 (LB4)		
	N.S.	DISTRIBUTOR, (INCL 48, 49, 50, 51, 52, 53, 54, 55, 56, 57, 58, 59, 60, 61, 62, 81) (*17, 24)	94 (LB4)		
	N.S.	DISTRIBUTOR, (INCL 48, 49, 50, 51, 52, 53, 54, 55, 56, 57, 58, 59, 60, 61, 62, 81) (*28, 31, 32)	94-95 (LB4)		
	N.S.	DISTRIBUTOR, (INCL 48, 49, 50, 51, 52, 53, 54, 55, 56, 57, 58, 59, 60, 61, 62, 81) (*17, 24)	95 (LB4)		
	DISCON	DISTRIBUTOR, (*15, 17, 18, 19, 20, 21, 22, 24) (INCL 48, 49, 50, 51, 52, 53, 54, 55, 56, 57, 58, 59, 60, 61, 81)	90 (LB4)	1	1103798
	DISCON	DISTRIBUTOR, (*17, 24) (INCL 48, 49, 50, 51, 52, 53, 54, 55, 56, 57, 58, 59, 60, 61, 62, 81)	93 (LB4)	1	1103798

			OM00-004D	
	DISCON	DISTRIBUTOR, (*17, 24) (INCL 48, 49, 50, 51, 52, 53, 54, 55, 56, 57, 58, 59, 60, 61, 62, 81)	95 I (LB4)	1 1103798
	2.361	DISTRIBUTOR, (*2, 10)	90-91 I (LB4)	1 14095800
	DISCON	DISTRIBUTOR, (*2, 10) (INCL 48, 49, 50, 51, 52, 53, 54, 55, 56, 57, 58, 59, 60, 61, 62, 81)	92-93 I (LB4)	1 1103798
	2.361	DISTRIBUTOR, (*4, 7)	90-92 I (LB4)	1 14095800
	DISCON	DISTRIBUTOR, (*5)	90-91 I (LB4)	1 1103665
	DISCON	DISTRIBUTOR, (*5)	92 I (LB4)	1 1103837
4.	2.363	BOLT, DISTR CLA (*1, 2, 3, 5, 6, 8, 9, 10, 11, 12) (3/8-16X1-1/8) (8.900)	90-93 I (LB4)	1 14091544
	2.363	BOLT, DISTR CLA (*13, 14, 15, 17, 18, 24, 27) (3/8-16X1-1/8) (8.900)	93 I (LB4)	1 14091544
	2.363	BOLT, DISTR CLA (*15, 16, 17, 18, 19, 20, 21, 22, 23, 24) (8.900) (AC-DELCO #9424320)	90 I (LB4)	1 9424320
	2.363	BOLT, DISTR CLA (*17, 18, 24, 27, 28, 31, 32) (3/8-16X1-1/8) (8.900)	94-95 I (LB4)	1 14091544
	2.363	BOLT, DISTR CLA (*17, 24, 27, 28, 31, 32) (3/8-16X1-1/8) (8.900)	96 I (L35)	1 14091544
	2.363	BOLT, DISTR CLA (*4, 7) (3/8-16X1-1/8) (8.900)	90-92 I (LB4)	1 14091544
5.	2.363	CLAMP, DISTR IGN	90-95 I (LB4)	1 10096197
	2.363	CLAMP, DISTR IGN (*17, 24, 28, 31, 32)	96 I (L35)	1 10096197
6.	2.363	GASKET, DISTR (*13 KIT1, KIT2) (AC-DELCO #10108445)	93 I (LB4)	1 10108445
	2.363	GASKET, DISTR (*15, 17, 18, 19, 20, 21 KIT1, KIT2) (AC-DELCO #10108445)	90 I (LB4)	1 10108445
	2.363	GASKET, DISTR (*17, 24, 28, 31, 32 KIT1, KIT2) (AC-DELCO #10108445)	94-95 I (LB4)	1 10108445
	2.363	GASKET, DISTR (*17, 24, 28, 31, 32 KIT1, KIT2) (AC-DELCO #10108445)	96 I (L35)	1 10108445
	2.363	GASKET, DISTR (*2, 5, 10 KIT1, KIT2) (AC-DELCO #10108445)	90-93 I (LB4)	1 10108445
	2.363	GASKET, DISTR (*4, 7 KIT1, KIT2) (AC-DELCO #10108445)	90-92 I (LB4)	1 10108445
7.	8.900	BOLT, HEX, 5/16-18X.88, 3/4 THD, 300M, PX (CARB CHOKE CVR) (*1, 2, 3, 12)	91-93 I (LB4)	2 9442184
	8.900	BOLT, HEX, 5/16-18X.88, 3/4 THD, 300M, PX (CARB CHOKE CVR) (*4)	91-92 I (LB4)	2 9442184
	8.900	BOLT, HEX, 5/16-18X.88, 3/4 THD, 300M, PX (CARB CHOKE CVR) (*14)	93 I (LB4)	2 9442184
	8.900	BOLT, HEX, 5/16-18X.88, 3/4 THD, 300M, PX (CARB CHOKE CVR) (*17, 18, 32)	94-95 I (LB4)	2 9442184

8.	3.750	COVER, CARB CHOKE (*1, 2, 3, 12)	91-93 I (LB4)	1	14097256
	3.750	COVER, CARB CHOKE (*14, 17, 24, 27)	93 I (LB4)	1	14097256
	3.750	COVER, CARB CHOKE (*17, 18, 32)	94-95 I (LB4)	1	14097256
9.	3.750	COVER, CARB CHOKE (*4)	91-92 I (LB4)	1	14097256
	0.413	GROMMET, VLV RKR ARM CVR BOLT	94-95 I (LB4)	6	10201395
	0.413	GROMMET, VLV RKR ARM CVR BOLT	96 I (L35)	3	10201395
10.	3.750	GASKET, CARB CHOKE CVR (*1, 2, 3, 12)	91-93 I (LB4)	1	14097286
	3.750	GASKET, CARB CHOKE CVR (*14, 17, 18, 24, 27)	93 I (LB4)	1	14097286
	3.750	GASKET, CARB CHOKE CVR (*17, 18, 32)	94-95 I (LB4)	1	14097286
	3.750	GASKET, CARB CHOKE CVR (*4)	91-92 I (LB4)	1	14097286
11.	8.971	PLUG, SQ SOCKET 3/8-18 NPTF X .47 BRASS (INT MANIF VAC HOLE) (*1, 2, 3, 6, 8, 9, 10, 11, 12) (AC-DELCO #444662)	90-93 I (LB4)	AR	444662
	8.971	PLUG, SQ SOCKET 3/8-18 NPTF X .47 BRASS (INT MANIF VAC HOLE) (*4, 7) (AC-DELCO #444662)	90-92 I (LB4)	AR	444662
	8.971	PLUG, SQ SOCKET 3/8-18 NPTF X .47 BRASS (INT MANIF VAC HOLE) (*15, 16, 17, 18, 19, 20, 21, 22, 23, 24) (AC-DELCO #444662)	90 I (LB4)	AR	444662
	8.971	PLUG, SQ SOCKET 3/8-18 NPTF X .47 BRASS (INT MANIF VAC HOLE) (*14, 15, 17, 18, 24, 27) (AC-DELCO #444662)	93 I (LB4)	AR	444662
	8.971	PLUG, SQ SOCKET 3/8-18 NPTF X .47 BRASS (INT MANIF VAC HOLE) (*17, 18, 24, 27, 28) (AC-DELCO #444662)	94-95 I (LB4)	AR	444662
	3.265	PLUG, INT MANIF VAC HOLE (INT MANIF VAC HOLE) (3/8-18, 27/64 DEEP) (PEOR, STL) (*17, 18, 24, 27, 28, 31, 32) (8.971)	94-95 I (LB4)	AR	14090911
	3.265	PLUG, INT MANIF VAC HOLE (INT MANIF VAC HOLE) (3/8-18, 27/64 DEEP) (PEOR, STL) (*28, 31, 32) (8.971)	96 I (L35)	AR	14090911
	12.	8.971	PLUG, HEADLESS SQ SOC (1/2-14X39/64 (HTR HOSE NIP HOLE) (*1, 2, 3, 6, 8, 9, 10, 11, 12)	90-93 I (LB4)	AR
8.971		PLUG, SQ HD FILL & DRN .500-14 PL (HTR HOSE NIP HOLE) (*1, 2, 3, 6, 8, 9, 10, 11, 12)	90-93 I (LB4)	AR	444746
8.971		PLUG, HEADLESS SQ SOC (1/2-14X39/64 (HTR HOSE NIP HOLE) (*4, 5, 7)	90-92 I (LB4)	AR	25522466

			OM00-004D
8.971	PLUG, SQ HD FILL & DRN .500-14 PL (HTR HOSE NIP HOLE) (*4, 7)	90-92 I (LB4)	AR 444746
8.971	PLUG, HEADLESS SQ SOC (1/2-14X39/64 (HTR HOSE NIP HOLE) (*15, 16, 17, 18, 19, 20, 21, 22, 23, 24)	90 I (LB4)	AR 25522466
8.971	PLUG, HEADLESS SQ SOC (1/2-14X39/64 (HTR HOSE NIP HOLE) (PART OF 14) (*13)	91 I (LB4)	AR 25522466
1.073	PLUG, HTR HOSE NIP HOLE (PART OF 14) (3/8-18, 27/64 DEEP) (PEOR, STL) (*13) (8.971)	91 I (LB4)	AR 14090911
8.971	PLUG, HEADLESS SQ SOC (1/2-14X39/64 (HTR HOSE NIP HOLE) (*5, 13, 14, 15, 17, 18, 24, 27)	93 I (LB4)	AR 25522466
8.971	PLUG, SQ HD FILL & DRN .500-14 PL (HTR HOSE NIP HOLE) (*14, 15, 17, 18, 24, 27)	93 I (LB4)	AR 444746
1.073	PLUG, HTR HOSE NIP HOLE (HTR HOSE NIP HOLE) (1/2-14 X 39/64) (HEADLESS SQ SOC) (*17, 18, 24, 27, 31) (8.971)	94-95 I (LB4)	AR 25522466
1.073	PLUG, HTR HOSE NIP HOLE (HTR HOSE NIP HOLE) (1/2-14 X 39/64) (HEADLESS SQ SOC) (*17, 18, 24, 27, 31) (8.971)	96 I (L35)	AR 25522466
13.	3.275 BOLT, INT MANIF (HEX 3/8-16X1.25 280M PZOR .75 OD 1.09 THD LEN) (*1, 2, 3, 4, 5, 6, 7, 8, 9, 10)	90-95 I (LB4)	AR 10198997
	3.275 BOLT, INT MANIF (HEX 3/8-16X1.25 280M PZOR .75 OD 1.09 THD LEN) (*11, 12, 13, 14, 15, 16, 17, 18, 19, 20)	90-95 I (LB4)	AR 10198997
	3.275 BOLT, INT MANIF (HEX 3/8-16X1.25 280M PZOR .75 OD 1.09 THD LEN) (*21, 22, 23, 24, 25, 26, 27, 28, 31, 32)	90-95 I (LB4)	AR 10198997
	3.275 BOLT, INT MANIF (3/8-16X1-1/8) (8.900)	90-95 I (LB4)	8 14091544
	3.275 BOLT, INT MANIF (5/16-18X1.75 GM280M)	96 I (L35)	8 12550027
14.	3.265 MANIFOLD, INT (*1, 2, 3, 12, 14, 17, 18) (INCL 16, 18)	93 I (LB4)	1 14097288
	3.265 MANIFOLD, INT (*1, 2, 3, 4, 12) (INCL 16, 18)	90-92 I (LB4)	1 14097282
	3.265 MANIFOLD, INT (*13) (INCL 12)	91 I (LB4)	1 14097273
	3.265 MANIFOLD, INT (*13)	93 I (LB4)	1 14097273
	3.265 MANIFOLD, INT (*15, 16, 18, 19, 20, 22, 23) (INCL 16, 18)	90 I (LB4)	1 14097284
	3.265 MANIFOLD, INT (*17, 18, 32) (INCL 16, 18)	94-95 I (LB4)	1 14097288
	3.265 MANIFOLD, INT (*17, 18, 32)	96 I (L35)	1 12552422
	3.265 MANIFOLD, INT (*17, 21, 24) (INCL 16, 18)	90 I (LB4)	1 14097282
	3.265 MANIFOLD, INT (*24, 27, 28, 31) (4BBL)	96 I (L35)	1 12550460

	3.265	MANIFOLD, INT (*24, 27, 31) (INCL 16, 18)	94-95 I (LB4)	1	14097292
	3.265	MANIFOLD, INT (*28)	94-95 I (LB4)	1	10172785
	3.265	MANIFOLD, INT (*5) (INCL 16, 18)	90-91 I (LB4)	1	14096009
	3.265	MANIFOLD, INT (*5)	92 I (LB4)	1	12552430
	3.265	MANIFOLD, INT (*5)	93 I (LB4)	1	10172785
	3.265	MANIFOLD, INT (*6, 7, 8, 9, 10, 11, 15, 16, 18, 19, 20, 22, 23) (INCL 16, 18)	90-92 I (LB4)	1	14097284
	3.265	MANIFOLD, INT (*6, 8, 9, 10, 11, 15, 24, 27) (INCL 16, 18)	93 I (LB4)	1	14097292
15.	3.270	GASKET, INT MANIF	85-96		
	3.270	GASKET KIT, INT MANIF (INCLS (2) GSKTS)	96 I (L35)	1	12529196
	3.270	GASKET KIT, INT MANIF (*1) ..	93 I (LB4)	1	12520113
	3.270	GASKET KIT, INT MANIF (*1, 2, 3, 4, 5, 8, 12)	90-91 I (LB4)	1	10159422
	3.270	GASKET KIT, INT MANIF (*1, 2, 3, 4, 6, 8, 12)	92 I (LB4)	1	10159422
	3.270	GASKET KIT, INT MANIF (*13) ..	91 I (LB4)	1	12509697
	3.270	GASKET KIT, INT MANIF (*13) ..	93 I (LB4)	1	12509697
	3.270	GASKET KIT, INT MANIF (*15, 16, 18, 19, 20, 22, 23)	90 I (LB4)	1	10159491
	3.270	GASKET KIT, INT MANIF (*17, 18, 24, 27, 31, 32)	94-95 I (LB4)	1	12510908
	3.270	GASKET KIT, INT MANIF (*2, 3, 8, 9, 10, 11, 12, 14, 15, 17, 18, 24, 27)	93 I (LB4)	1	12510908
	3.270	GASKET KIT, INT MANIF (*5) (0.289)	92 I (LB4)	1	12507990
	3.270	GASKET KIT, INT MANIF (*6) ..	93 I (LB4)	1	12520114
	3.270	GASKET KIT, INT MANIF (*6, 7, 9, 10, 11)	90-91 I (LB4)	1	10159491
	3.270	GASKET KIT, INT MANIF (*7, 9, 10, 11)	92 I (LB4)	1	10159490
16.	3.265	SHIELD, INT MANIF OIL SPH (PART OF 14)	90-91 I (LB4)	1	461386
	3.265	SHIELD, INT MANIF OIL SPH (*1, 2, 3, 4, 6, 7, 8, 9, 10, 11, 12) (PART OF 14)	92 I (LB4)	1	461386
	3.265	SHIELD, INT MANIF OIL SPH (*1, 2, 3, 6, 8, 9, 10, 11, 12, 14, 15, 17, 18, 24, 27) (PART OF 14) ...	93 I (LB4)	1	14097443
	3.265	SHIELD, INT MANIF OIL SPH (*17, 18, 24, 27, 31, 32) (PART OF 14)	94-95 I (LB4)	1	14097443
17.	0.413	BOLT, VLV RKR ARM CVR (/FLAT WAS) (HEX WASHER HEAD 1/4-20X3.42, .8 THD .5 OD, 280 MAT, 7111M, MACH W)	92-93 I (LB4)	12	10172743
	0.413	BOLT, VLV RKR ARM CVR	94-95 I (LB4)	12	10201396
	0.413	BOLT, VLV RKR ARM CVR	96 I (L35)	12	10201396
	0.413	BOLT, VLV RKR ARM CVR (*1, 2, 3, 4, 5, 6, 7, 8, 9, 10, 11, 12)	90-91 I (LB4)	12	12338092
	0.413	BOLT, VLV RKR ARM CVR (*13) ..	91 I (LB4)	12	12338092
	0.413	BOLT, VLV RKR ARM CVR (*15, 16, 17, 18, 19, 20, 21, 22, 23, 24)	90 I (LB4)	12	12338092

	0.413	BOLT, VLV RKR ARM CVR (*25)	85-86	I (LB4)	12	10172743
	0.413	BOLT, VLV RKR ARM CVR (*26) (/FLAT WAS) (HEX WASHER HEAD 1/4-20X3.42, .8 THD .5 OD, 280 MAT, 7111M, MACH W)	85-91	I (LB4)	12	10172743
18.	3.265	STUD, INT MANIF OIL SPH SHLD (*1, 2, 3, 6, 8, 9, 10, 11, 12) (PART OF 14) (3.601)	90-93	I (LB4)	4	10229247
	3.265	STUD, INT MANIF OIL SPH SHLD (*13) (PART OF 14) (3.601)	91	I (LB4)	4	10229247
	3.265	STUD, INT MANIF OIL SPH SHLD (*14, 15, 17, 18, 24, 27) (PART OF 14) (3.601)	93	I (LB4)	4	10229247
	3.265	STUD, INT MANIF OIL SPH SHLD (*15, 16, 17, 18, 19, 20, 21, 22, 23, 24) (PART OF 14) (3.601)	90	I (LB4)	4	10229247
	3.265	STUD, INT MANIF OIL SPH SHLD (*17, 18, 24, 27, 31, 32) (PART OF 14) (3.601)	94-95	I (LB4)	4	10229247
	3.265	STUD, INT MANIF OIL SPH SHLD (*28) (PART OF 14) (3/8-16X.78 BOTH ENDS) (3.275)	94-95	I (LB4)	4	14091545
	3.265	STUD, INT MANIF OIL SPH SHLD (*28) (PART OF 14) (3/8-16X.78 BOTH ENDS) (3.275)	96	I (L35)	4	14091545
	3.265	STUD, INT MANIF OIL SPH SHLD (*4, 7) (PART OF 14) (3.601)	90-92	I (LB4)	4	10229247
	3.265	STUD, INT MANIF OIL SPH SHLD (*5) (PART OF 14) (3/8-16X.78 BOTH ENDS) (3.275)	93	I (LB4)	4	14091545
19.	0.429	NUT, VLV RKR ARM (PART OF 21, 34) (FLANGED HEAD, 13MM HEX, M8X1.0-6H THREAD) (NON-ADJUSTABLE) (PART OF 21, 34)	94-95	I (LB4)	12	14102542
	0.429	NUT, VLV RKR ARM (PART OF 21, 34) (FLANGED HEAD, 13MM HEX, M8X1.0-6H THREAD) (NON-ADJUSTABLE) (PART OF 21, 34)	96	I (L35)	12	14102542
	0.429	NUT, VLV RKR ARM (*1, 2, 3, 4, 5, 6, 7, 8, 9, 10, 11, 12) (PART OF 21, 34) (3/8-24X.0495, 301M, CD) (ADJUSTABLE) (PART OF 21, 34)	90-91	I (LB4)	16	3744341
	0.429	NUT, VLV RKR ARM (*1, 2, 3, 5, 6, 8, 9, 10, 11, 12) (ADJUSTABLE) (PART OF 21, 34) (HEX PREV TORQ, ALL METAL, 10X1.0X11.2, 301M, CD) (PART OF 21, 34)	92-93	I (LB4)	16	477212
	0.429	NUT, VLV RKR ARM (*1, 2, 3, 5, 6, 8, 9, 10, 11, 12) (PART OF 21, 34) (FLANGED HEAD, 13MM HEX, M8X1.0-6H THREAD) (NON-ADJUSTABLE) (PART OF 21, 34)	92-93	I (LB4)	12	14102542

0.429	NUT, VLV RKR ARM (*13) (PART OF 21, 34) (3/8-24X.0495, 301M, CD) (ADJUSTABLE) (PART OF 21, 34)	91 I (LB4)	16	3744341
0.429	NUT, VLV RKR ARM (*13) (PART OF 21, 34) (3/8-24X.0495, 301M, CD) (ADJUSTABLE) (PART OF 21, 34)	93 I (LB4)	16	3744341
0.429	NUT, VLV RKR ARM (*14, 15, 17, 18, 24, 27) (PART OF 21, 34) (FLANGED HEAD, 13MM HEX, M8X1.0-6H THREAD) (NON-ADJUSTABLE) (PART OF 21, 34)	93 I (LB4)	12	14102542
0.429	NUT, VLV RKR ARM (*14, 15, 17, 18, 24, 27) (ADJUSTABLE) (PART OF 21, 34) (HEX PREV TORQ, ALL METAL, 10X1.0X11.2, 301M, CD) (PART OF 21, 34)	93 I (LB4)	16	477212
0.429	NUT, VLV RKR ARM (*15, 16, 17, 18, 19, 20, 21, 22, 23, 24) (PART OF 21, 34) (PART OF 21, 34)	90 I (LB4)	16	3744341
0.429	NUT, VLV RKR ARM (*25) (PART OF 21, 34) (NON-ADJUSTABLE) (PART OF 21, 34)	85-86 I (LB4)	12	14102542
0.429	NUT, VLV RKR ARM (*26) (PART OF 21, 34) (FLANGED HEAD, 13MM HEX, M8X1.0-6H THREAD) (NON-ADJUSTABLE) (PART OF 21, 34)	85-91 I (LB4)	12	14102542
0.429	NUT, VLV RKR ARM (*4, 7) (PART OF 21, 34) (FLANGED HEAD, 13MM HEX, M8X1.0-6H THREAD) (NON-ADJUSTABLE) (PART OF 21, 34)	92 I (LB4)	12	14102542
0.429	NUT, VLV RKR ARM (*4, 7) (ADJUSTABLE) (PART OF 21, 34) (HEX PREV TORQ, ALL METAL, 10X1.0X11.2, 301M, CD) (PART OF 21, 34)	92 I (LB4)	16	477212
N.S.	BALL, VLV RKR ARM (PART OF 21, 34)	85-95 I (LB4)		
N.S.	ARM KIT, VLV RKR (W/BALL) (INCL 19, 20) (USED FOR CYL HEAD WITH PRESSED IN ROCKER ARM STUD (ADJUSTABLE) LASH) (ARM, BALL, NUT)	85-95 I (LB4)	AR	10089648
0.333	ARM KIT, VLV RKR (W/BALL) (INCL 19, 20) (USED FOR CYL HEAD WITH NET LASH (NON-ADJUSTABLE) (ARM, BALL, NUT)) (*17, 18, 24, 27, 28, 31, 32)	93-95 I (LB4)	AR	12522105
0.333	ARM KIT, VLV RKR (W/BALL) (INCL 19, 20) (USED FOR CYL HEAD WITH NET LASH (NON-ADJUSTABLE) (ARM, BALL, NUT))	96 I (L35)	AR	12522105

					OM00-004D
22.	0.423	GASKET, VLV RKR ARM CVR ...	94-95	I (LB4)	2 10201397
	0.423	GASKET, VLV RKR ARM CVR ...	96	I (L35)	2 10201397
	0.423	GASKET, VLV RKR ARM CVR (KIT1)	85-93	I (LB4)	2 14081257
23.	0.293	BOLT, CYL HD (LONG) (7/16-14X3 3/4 PL)	85-94	I (LB4)	10 14082317
	0.293	BOLT, CYL HD (LONG) (7/16-14 X3 51/64) (AC-DELCO #10168525)	95	I (LB4)	10 10168525
	0.293	BOLT, CYL HD (LONG) (7/16-14 X3 51/64) (AC-DELCO #10168525)	96	I (L35)	10 10168525
24.	0.293	BOLT, CYL HD (MEDIUM) (7/16-14 X 3 1/16) (AC-DELCO #10168526)	85-94	I (LB4)	4 10168526
	0.293	BOLT, CYL HD (MEDIUM) (7/16-14 X 3 1/16) (AC-DELCO #10168526)	95	I (LB4)	4 10168526
	0.293	BOLT, CYL HD (MEDIUM) (7/16-14 X 3 1/16) (AC-DELCO #10168526)	96	I (L35)	4 10168526
25.	0.293	BOLT, CYL HD (SHORT) (7/16-14X1 3/4 PL)	85-94	I (LB4)	10 14082315
	0.293	BOLT, CYL HD (SHORT) (7/16X1 3/4, PZOR, .78 O.D.) (AC-DELCO #10168527)	95	I (LB4)	10 10168527
	0.293	BOLT, CYL HD (SHORT) (7/16X1 3/4, PZOR, .78 O.D.) (AC-DELCO #10168527)	96	I (L35)	10 10168527
26.	2.270	SPARKPLUG, (*1, 2, 3, 6, 8, 9, 10, 11, 12) (AC-DELCO #MR43T)	90-93	I (LB4)	6 5613438
	2.270	SPARKPLUG, (*13) (AC-DELCO #CR42TS)	91	I (LB4)	6 5614226
	2.270	SPARKPLUG, (*13) (AC-DELCO #CR42TS)	93	I (LB4)	6 5614226
	2.270	SPARKPLUG, (*14, 15, 17, 18, 24, 27) (AC-DELCO #MR43T)	93	I (LB4)	6 5613438
	2.270	SPARKPLUG, (*15, 16, 17, 18, 19, 20, 21, 22, 23, 24) (AC-DELCO #MR43T)	90	I (LB4)	6 5613438
	2.270	SPARKPLUG, (*17, 18, 24, 27) (AC-DELCO #MR43T)	94-95	I (LB4)	6 5613438
	2.270	SPARKPLUG, (*17, 18, 24, 27) (AC-DELCO #MR43LTS)	96	I (L35)	6 5614210
	2.270	SPARKPLUG, (*28, 31, 32) (AC-DELCO #CR43TSM)	94-95	I (LB4)	6 5614288
	2.270	SPARKPLUG, (*28, 31, 32) (AC-DELCO #CR43TSM)	96	I (L35)	6 5614288
	2.270	SPARKPLUG, (*4, 7) (AC-DELCO #MR43T)	90-92	I (LB4)	6 5613438
	2.270	SPARKPLUG, (*5) (AC-DELCO #CR43TS)	90-92	I (LB4)	6 5614029
	2.270	SPARKPLUG, (*5)	93	I (LB4)	6 5614258
27.	0.293	PLUG, ENG COOL TEMP IND SW HOLE (*1, 2, 3, 6, 8, 9, 10, 11, 11, 12) (3/8-18 NPTFX.47) (BRASS) (8.971) (AC-DELCO #444662) .	90-93	I (LB4)	1 444662

	0.293	PLUG, ENG COOL TEMP IND SW HOLE (*13) (3/8-18, 27/64 DEEP) (PEOR, STL) (8.971)	91 I (LB4)	1	14090911
	0.293	PLUG, ENG COOL TEMP IND SW HOLE (*13) (3/8-18, 27/64 DEEP) (PEOR, STL) (8.971)	93 I (LB4)	1	14090911
	0.293	PLUG, ENG COOL TEMP IND SW HOLE (*15, 16, 17, 18, 19, 20, 21, 22, 23, 24) (8.971) (AC-DELCO #444662)	90 I (LB4)	1	444662
	0.293	PLUG, ENG COOL TEMP IND SW HOLE (*15, 17, 18, 24, 27) (3/8-18 NPTFX.47) (BRASS) (8.971) (AC-DELCO #444662) .	93-95 I (LB4)	1	444662
	0.293	PLUG, ENG COOL TEMP IND SW HOLE (*17, 18, 24, 27) (3/8-18 NPTFX.47) (BRASS) (8.971) (AC-DELCO #444662)	96 I (L35)	1	444662
	0.293	PLUG, ENG COOL TEMP IND SW HOLE (*25) (8.971)	85-86 I (LB4)	1	14090911
	0.293	PLUG, ENG COOL TEMP IND SW HOLE (*26) (3/8-18, 27/64 DEEP) (PEOR, STL) (8.971)	85-91 I (LB4)	1	14090911
	0.293	PLUG, ENG COOL TEMP IND SW HOLE (*4, 7) (3/8-18 NPTFX.47) (BRASS) (8.971) (AC-DELCO #444662)	90-92 I (LB4)	1	444662
	0.293	PLUG, ENG COOL TEMP IND SW HOLE (*5) (3/8-18, 27/64 DEEP) (PEOR, STL) (8.971)	90-93 I (LB4)	1	14090911
28.	0.297	VALVE, EXH (.0305" O.S.)	85-92 I (LB4)	6	14033160
	0.297	VALVE, EXH	85-92 I (LB4)	6	14088641
	0.297	VALVE, EXH (.0035 O.S.)	85-92 I (LB4)	6	14095459
	0.297	VALVE, EXH (.0155" O.S.)	85-92 I (LB4)	6	14095460
	0.297	VALVE, EXH (STD)	96 I (L35)	6	12550909
	0.297	VALVE, EXH (.0305 O/S)	96 I (L35)	6	12550913
	0.297	VALVE, EXH (*1, 2, 3, 5, 6, 8, 9, 10, 11, 12, 14, 15, 17, 18, 24, 27) (STD)	93 I (LB4)	6	10144183
	0.297	VALVE, EXH (*13) (.0305" O.S.) .	93 I (LB4)	6	14033160
	0.297	VALVE, EXH (*13)	93 I (LB4)	6	14088641
	0.297	VALVE, EXH (*13) (.0035 O.S.) .	93 I (LB4)	6	14095459
	0.297	VALVE, EXH (*13) (.0155" O.S.) .	93 I (LB4)	6	14095460
	0.297	VALVE, EXH (*17, 18, 24, 27, 28, 31, 32) (.0155 O.S.)	94-95 I (LB4)	6	10201145
	0.297	VALVE, EXH (*17, 18, 24, 27, 28, 31, 32) (.0035 O.S.)	94-95 I (LB4)	6	10201146
	0.297	VALVE, EXH (*17, 18, 24, 27, 28, 32) (STD)	94-95 I (LB4)	6	10144183
29.	0.296	VALVE, INT (STD)	96 I (L35)	6	10241743
	0.296	VALVE, INT (.0155 O.S.) (*25) ..	85-86 I (LB4)	4	14075643
	0.296	VALVE, INT (*1, 2, 3, 6, 8, 9, 10, 11, 12) (STD)	90-93 I (LB4)	6	10093027
	0.296	VALVE, INT (*1, 2, 3, 6, 8, 9, 10, 11, 12) (.0035" O.S.)	90-93 I (LB4)	6	10166151
	0.296	VALVE, INT (*1, 2, 3, 6, 8, 9, 10, 11, 12) (.0155" O.S.)	90-93 I (LB4)	6	10166152

		OM00-004D	
0.296	VALVE, INT (*1, 2, 3, 6, 8, 9, 10, 11, 12) (.0305" O.S.)	90-93 (LB4)	6 14034080
0.296	VALVE, INT (*13) (STD)	91 (LB4)	6 14075641
0.296	VALVE, INT (*13) (.0035 O.S.)	91 (LB4)	6 14075642
0.296	VALVE, INT (*13) (.0155 O.S.)	91 (LB4)	6 14075643
0.296	VALVE, INT (*13) (.0305 O.S.)	91 (LB4)	6 14075644
0.296	VALVE, INT (*13) (STD)	93 (LB4)	6 14075641
0.296	VALVE, INT (*13) (.0035 O.S.)	93 (LB4)	6 14075642
0.296	VALVE, INT (*13) (.0155 O.S.)	93 (LB4)	6 14075643
0.296	VALVE, INT (*13) (.0305 O.S.)	93 (LB4)	6 14075644
0.296	VALVE, INT (*13, 15)	93 (LB4)	6 14034078
0.296	VALVE, INT (*14, 15, 17, 18, 24, 27) (STD)	93 (LB4)	6 10093027
0.296	VALVE, INT (*14, 15, 17, 18, 24, 27) (.0035" O.S.)	93 (LB4)	6 10166151
0.296	VALVE, INT (*14, 15, 17, 18, 24, 27) (.0155" O.S.)	93 (LB4)	6 10166152
0.296	VALVE, INT (*14, 15, 17, 18, 24, 27) (.0305" O.S.)	93 (LB4)	6 14034080
0.296	VALVE, INT (*15, 16)	90 (LB4)	6 14075641
0.296	VALVE, INT (*15, 16)	90 (LB4)	6 14075642
0.296	VALVE, INT (*15, 16)	90 (LB4)	6 14075643
0.296	VALVE, INT (*15, 16)	90 (LB4)	6 14075644
0.296	VALVE, INT (*15, 17, 18, 19, 20, 21, 22, 23, 24)	90 (LB4)	6 10093027
0.296	VALVE, INT (*15, 17, 18, 19, 20, 21, 22, 23, 24)	90 (LB4)	6 10166151
0.296	VALVE, INT (*15, 17, 18, 19, 20, 21, 22, 23, 24)	90 (LB4)	6 10166152
0.296	VALVE, INT (*15, 17, 18, 19, 20, 21, 22, 23, 24)	90 (LB4)	6 14034080
0.296	VALVE, INT (*17, 18, 24, 27) (STD)	94-95 (LB4)	6 10093027
0.296	VALVE, INT (*17, 18, 24, 27) (.0035" O.S.)	94-95 (LB4)	6 10166151
0.296	VALVE, INT (*17, 18, 24, 27) (.0155" O.S.)	94-95 (LB4)	6 10166152
0.296	VALVE, INT (*17, 18, 24, 27)	94-95 (LB4)	6 10166153
0.296	VALVE, INT (*25)	85-86 (LB4)	4 14075642
0.296	VALVE, INT (*25)	85-86 (LB4)	6 14075644
0.296	VALVE, INT (*26) (STD)	85-91 (LB4)	6 10093027
0.296	VALVE, INT (*26) (.0035" O.S.)	85-91 (LB4)	6 10166151
0.296	VALVE, INT (*26) (.0155" O.S.)	85-91 (LB4)	6 10166152
0.296	VALVE, INT (*26) (.0305" O.S.)	85-91 (LB4)	6 14034080
0.296	VALVE, INT (*28, 31, 32) (STD)	94-95 (LB4)	6 14075641
0.296	VALVE, INT (*28, 31, 32) (.0035 O.S.)	94-95 (LB4)	6 14075642
0.296	VALVE, INT (*28, 31, 32) (.0155 O.S.)	94-95 (LB4)	6 14075643
0.296	VALVE, INT (*28, 31, 32) (.0305 O.S.)	94-95 (LB4)	6 14075644
0.296	VALVE, INT (*4, 7) (STD)	90-92 (LB4)	6 10093027
0.296	VALVE, INT (*4, 7) (.0035" O.S.)	90-92 (LB4)	6 10166151
0.296	VALVE, INT (*4, 7) (.0155" O.S.)	90-92 (LB4)	6 10166152
0.296	VALVE, INT (*4, 7) (.0305" O.S.)	90-92 (LB4)	6 14034080
0.296	VALVE, INT (*5) (STD)	90-93 (LB4)	6 14075641
0.296	VALVE, INT (*5) (.0035 O.S.)	90-93 (LB4)	6 14075642
0.296	VALVE, INT (*5) (.0155 O.S.)	90-93 (LB4)	6 14075643

	0.296	VALVE, INT (*5) (.0305 O.S.) ...	90-93	I (LB4)	6	14075644
30.	0.459	LIFTER, VLV (AC-DELCO #HL105)	92-93	I (LB4)	12	5234670
	0.459	LIFTER, VLV (AC-DELCO #HL120)	96	I (L35)	12	17120090
	0.459	LIFTER, VLV (*1, 2, 3, 4, 5, 6, 7, 8, 9, 10, 11, 12) (AC-DELCO #HL112)	90-91	I (LB4)	12	5234890
	0.459	LIFTER, VLV (*13) (AC-DELCO #HL112)	91	I (LB4)	12	5234890
	0.459	LIFTER, VLV (*15, 16, 17, 18, 19, 20, 21, 22, 23, 24) (AC-DELCO #HL112)	90	I (LB4)	12	5234890
	0.459	LIFTER, VLV (*17, 18, 24, 27, 28, 31, 32) (AC-DELCO #HL105) ..	94-95	I (LB4)	12	5234670
	0.459	LIFTER, VLV (*25) (AC-DELCO #HL105) (ROLLER)	85-86	I (LB4)	12	5234670
	0.459	LIFTER, VLV (*26) (AC-DELCO #HL105) (ROLLER)	85-91	I (LB4)	12	5234670
31.	0.439	GUIDE, VLV LFTR	85-92	I (LB4)	8	14093634
	0.439	GUIDE, VLV LFTR (*1, 6, 13) ...	93	I (LB4)	8	14093634
32.	0.426	ROD, VLV PUSH	93-95	I (LB4)	12	10046173
	0.426	ROD, VLV PUSH	96	I (L35)	16	10241740
33.	0.289	GASKET, CYL HD (*13 KIT1) ..	91	I (LB4)	1	14097272
	0.289	GASKET, CYL HD (*13 KIT1) ..	93	I (LB4)	1	14097272
	0.289	GASKET, CYL HD (*14, 15, 17, 18, 24, 27 KIT1)	93	I (LB4)	1	12552362
	0.289	GASKET, CYL HD (*15, 16, 17, 18, 19, 20, 21, 22, 23, 24 KIT1) ..	90	I (LB4) (OEM-OMC)	1	12552362
	0.289	GASKET, CYL HD (*17, 18, 27, 28, 31, 32)	96	I (L35)	2	12552362
	0.289	GASKET, CYL HD (*25 KIT1) ...	85-86	I (LB4) (OEM-OMC)	1	14097272
	0.289	GASKET, CYL HD (*26 KIT1) ...	85-91	I (LB4) (OEM-OMC)	1	12552362
	0.289	GASKET, CYL HD (*28, 31, 32 KIT1)	94-95	I (LB4)	1	10105110
	0.289	GASKET, CYL HD (*28, 31, 32 KIT1)	94-95	I (LB4)	1	12552362
	0.289	GASKET, CYL HD (*4, 7 KIT1) ..	90-92	I (LB4) (OEM-OMC)	1	12552362
	0.289	GASKET, CYL HD (*5 KIT1)	90-93	I (LB4)	1	10105110
	0.289	GASKET, CYL HD (*5 KIT1)	90-93	I (LB4)	1	12552362
34.	0.269	HEAD, CYL (*17, 18, 24, 27, 28, 32)	96	I (L35)	2	10235770
	0.269	HEAD, CYL (*31) (INCL EXH SEAT INSERT)	96	I (L35)	1	10235769
	0.269	HEAD, CYL (W/STUDS) (INCL 19, 20)	85-92	I (LB4)	2	12520274
	0.269	HEAD, CYL (W/STUDS) (INCL 19, 20) (*1, 2, 3, 4, 5, 6, 7, 8, 9, 10, 11, 12, 14, 15, 17, 18, 24, 27) ...	93	I (LB4)	2	12518291
	0.269	HEAD, CYL (W/STUDS) (INCL 19, 20) (*13)	93	I (LB4)	2	12520274
	0.269	HEAD, CYL (W/STUDS) (INCL 19, 20) (*17, 18, 24, 27, 28, 32)	94-95	I (LB4)	2	12522751
35.	0.429	STUD, VLV RKR ARM BALL (NON-ADJUSTABLE) (M10X1.5X22, M8X1.0X32, B:21 SHLD AND 9.3 THD)	96	I (L35)	12	10044997

		OM00-004D	
0.429	STUD, VLV RKR ARM BALL (.003" O.S.) (*1, 2, 3, 4, 5, 6, 7, 8, 9, 10, 11, 12)	90-91 I (LB4)	16 3814692
0.429	STUD, VLV RKR ARM BALL (.003" O.S.) (*13)	91 I (LB4)	16 3814692
0.429	STUD, VLV RKR ARM BALL (.003" O.S.) (*13)	93 I (LB4)	16 3814692
0.429	STUD, VLV RKR ARM BALL (.003" O.S.) (*15, 16, 17, 18, 19, 20, 21, 22, 23, 24)	90 I (LB4)	16 3814692
0.429	STUD, VLV RKR ARM BALL (.013" O.S.) (*1, 2, 3, 4, 5, 6, 7, 8, 9, 10, 11, 12)	90-91 I (LB4)	16 3815892
0.429	STUD, VLV RKR ARM BALL (.013" O.S.) (*13)	91 I (LB4)	16 3815892
0.429	STUD, VLV RKR ARM BALL (.013" O.S.) (*13)	93 I (LB4)	16 3815892
0.429	STUD, VLV RKR ARM BALL (.013" O.S.) (*15, 16, 17, 18, 19, 20, 21, 22, 23, 24)	90 I (LB4)	16 3815892
0.429	STUD, VLV RKR ARM BALL (*1, 2, 3, 5, 6, 8, 9, 10, 11, 12) (NON-ADJUSTABLE) (M10X1.5X22, M8X1.0X32, B:21 SHLD AND 9.3 THD)	92-93 I (LB4)	12 10044997
0.429	STUD, VLV RKR ARM BALL (*14, 15, 17, 18, 24, 27) (NON-ADJUSTABLE) (M10X1.5X22, M8X1.0X32, B:21 SHLD AND 9.3 THD)	93 I (LB4)	12 10044997
0.429	STUD, VLV RKR ARM BALL (*17, 18, 24, 27, 31, 32) (NON-ADJUSTABLE) (M10X1.5X22, M8X1.0X32, B:21 SHLD AND 9.3 THD)	94-95 I (LB4)	12 10044997
0.429	STUD, VLV RKR ARM BALL (ADJUSTABLE) (M10X1.5X9.9/M10X1X18) (*25, 33, 34, 35)	85-86 I (LB4)	12 476530
0.429	STUD, VLV RKR ARM BALL (ADJUSTABLE) (M10X1.5X9.9/M10X1X18) (*26, 33, 34, 35)	85-86 I (LB4)	12 476530
0.429	STUD, VLV RKR ARM BALL (ADJUSTABLE) (M10X1.5X9.9/M10X1X18) (*1, 2, 3, 5, 6, 8, 9, 10, 11, 12, 33, 34, 35)	92-93 I (LB4)	12 476530
0.429	STUD, VLV RKR ARM BALL (ADJUSTABLE) (M10X1.5X9.9/M10X1X18) (*4, 7, 33, 34, 35)	92 I (LB4)	12 476530
0.429	STUD, VLV RKR ARM BALL (ADJUSTABLE) (M10X1.5X9.9/M10X1X18) (*14, 15, 17, 18, 24, 27, 33, 34, 35) ...	93 I (LB4)	12 476530

	0.429	STUD, VLV RKR ARM BALL (NON-ADJUSTABLE) (*26, 33, 34, 35) (NON-ADJUSTABLE) (M10X1.5X22, M8X1.0X32, B:21 SHLD AND 9.3 THD)	85-91 I (LB4)	12	10044997
	0.429	STUD, VLV RKR ARM BALL (NON-ADJUSTABLE) (*4, 7) (NON-ADJUSTABLE) (M10X1.5X22, M8X1.0X32, B:21 SHLD AND 9.3 THD)	92 I (LB4)	12	10044997
	0.429	STUD, VLV RKR ARM BALL (NON-ADJUSTABLE) (M10X1.5X22, M8X1.0X32, B:21 SHLD AND 9.3 THD) (*25, 33, 34, 35)	85-86 I (LB4)	12	10044997
36.	0.308	SEAL, INT VLV STEM OIL	96 I (L35)	16	10212810
	0.308	SEAL, INT VLV STEM OIL (W/RET) (*KIT1) (.015 O.S.)	85-95 I (LB4)	AR	14037715
	0.308	SEAL, INT VLV STEM OIL (W/RET) (*KIT1) (.030 O.S.)	85-95 I (LB4)	AR	14037716
	0.308	SEAL, INT VLV STEM OIL (W/RET) (STD & .003MM O.S.) (*KIT1)	85-95 I (LB4)	AR	460483
37.	0.303	SPRING, VLV	85-95 I (LB4)	12	3911068
	0.303	SPRING, VLV	96 I (L35)	6	10212811
38.	0.308	SHIELD, VLV STEM OIL	85-95 I (LB4)	12	10007818
39.	0.308	SEAL, VLV STEM OIL (*KIT1) (O-RING TYPE) (EXH & INTAKE)	85-95 I (LB4)	6	10214034
40.	0.309	ROTATOR, VLV	85-95 I (LB4)	4	14042575
41.	0.310	KEY, VLV STEM	85-95 I (LB4)	12	24503856
	0.310	KEY, VLV STEM	96 I (L35)	12	24503856
42.	0.309	CAP, VLV SPR	85-95 I (LB4)	AR	14003974
	0.309	CAP, VLV SPR	96 I (L35)	8	10241744
43.	0.459	WASHER, VLV LFTR GDE RET (PART OF 45) (5/16X47/64X1/16) (ZC) (8.929)	85-95 I (LB4)	AR	120386
	0.459	WASHER, VLV LFTR GDE RET (PART OF 45) (5/16X47/64X1/16) (ZC) (8.929)	96 I (L35)	AR	120386
44.	0.459	BOLT, VLV LFTR GDE (1.840) ...	94-95 I (LB4)	4	3933126
	0.459	BOLT, VLV LFTR GDE (.10 THICK) (HFH, 5/16-18X.63, .41 THD, .75 OD, 300M, PC, MACH, W/SHLD .50 OD X)	96 I (L35)	4	24501042
	0.459	BOLT, VLV LFTR GDE (*2, 3, 5, 8, 9, 10, 11, 14, 15, 17, 18, 24, 27) (1.840)	93 I (LB4)	4	3933126
	0.459	BOLT, VLV LFTR GDE RET (HFH 5/16-18X.56 280M POR) (8.900)	92 I (LB4)	4	9440035
	0.459	BOLT, VLV LFTR GDE RET (*1, 6, 13) (HFH 5/16-18X.56 280M POR) (8.900)	93 I (LB4)	4	9440035
	0.459	BOLT, VLV LFTR GDE RET (*25, 26) (HFH 5/16-18X.56 280M POR) (8.900)	85-91 I (LB4)	4	9440035

				OM00-004D
	0.459	BOLT, VLV LFTR GDE RET (PART OF 45) (VLV LFTR GRE RET) (HEX 5/16-18X5/8 Z 28OM) (8.900) (USED W/120386 WASHER)	85-93 (LB4)	AR 180075
45.	0.480	RETAINER, VLV LFTR GDE (*1, 6) (0.459)	90-93 (LB4)	4 10046165
	0.480	RETAINER, VLV LFTR GDE (*13) (0.459)	91 (LB4)	4 10046165
	0.480	RETAINER, VLV LFTR GDE (*13) (0.459)	93 (LB4)	4 10105916
	0.480	RETAINER, VLV LFTR GDE (*2, 3, 4, 5, 7, 8, 9, 10, 11, 12) (0.459)	90-92 (LB4)	4 10046165
	0.480	RETAINER, VLV LFTR GDE (*25) (0.459)	85-86 (LB4)	4 10046165
	0.480	RETAINER, VLV LFTR GDE (*26) (0.459)	85-91 (LB4)	4 10046165
46.	0.004	BRACKET, ENG LIFT RR (*1, 2, 3, 4, 5, 6, 7, 8, 9, 10, 11, 12)	90-91 (LB4)	1 3923243
	0.004	BRACKET, ENG LIFT RR (*15, 16, 17, 18, 19, 20, 21, 22, 23, 24)	90 (LB4)	1 3923243
47.	8.900	BOLT, HEX 3/8-16X1.12 280M PEOR FULL THD (ENG LIFT) (2.042)	85-92 (LB4)	AR 9442339
48.	2.379	PIN, DISTR GR (*15, 17, 18, 19, 20, 21, 22, 24) (PART OF 3) (8.939) (AC-DELCO #456652)	90 (LB4)	1 456652
	2.379	PIN, DISTR GR (*17, 24) (PART OF 3) (8.939) (AC-DELCO #456652)	93-95 (LB4)	1 456652
	2.379	PIN, DISTR GR (*2, 10) (PART OF 3) (8.939) (AC-DELCO #456652)	92-93 (LB4)	1 456652
	2.379	PIN, DISTR GR (*5) (PART OF 3) (8.939) (AC-DELCO #456652)	92 (LB4)	1 456652
49.	2.374	GEAR, DISTR SHF (*15, 17, 18, 19, 20, 21, 22, 24) (PART OF 3) (AC-DELCO #10495062)	90 (LB4)	1 10495062
	2.374	GEAR, DISTR SHF (*17, 24) (PART OF 3) (AC-DELCO #10495062)	93 (LB4)	1 10495062
	2.374	GEAR, DISTR SHF (*17, 24) (PART OF 3) (AC-DELCO #10469459)	94-95 (LB4)	1 10469459
	2.374	GEAR, DISTR SHF (*17, 24) (PART OF 3) (AC-DELCO #10469459)	96 (L35)	1 10469459
	2.374	GEAR, DISTR SHF (*2, 10) (PART OF 3) (AC-DELCO #10469459)	92-93 (LB4)	1 10469459
	2.374	GEAR, DISTR SHF (*28, 31, 32) (PART OF 3) (AC-DELCO #10495062)	94-95 (LB4)	1 10495062
	2.374	GEAR, DISTR SHF (*28, 31, 32) (PART OF 3) (AC-DELCO #10495062)	96 (L35)	1 10495062
	2.374	GEAR, DISTR SHF (*5) (PART OF 3) (AC-DELCO #10495062)	92 (LB4)	1 10495062
50.	2.379	WASHER, DISTR SHF (*15, 17, 18, 19, 20, 21, 22, 24) (PART OF 3) (AC-DELCO #1977937)	90 (LB4)	1 1977937

	2.379	WASHER, DISTR SHF (*17, 24) (PART OF 3) (AC-DELCO #1977937)	93-95 I (LB4)	1	1977937
	2.379	WASHER, DISTR SHF (*17, 24, 28, 31, 32) (PART OF 3) (AC-DELCO #1977937)	96 I (L35)	1	1977937
	2.379	WASHER, DISTR SHF (*2, 10) (PART OF 3) (AC-DELCO #1977937)	92-93 I (LB4)	1	1977937
	2.379	WASHER, DISTR SHF (*28, 31, 32) (PART OF 3) (AC-DELCO #1977937)	94-95 I (LB4)	1	1977937
	2.379	WASHER, DISTR SHF (*5) (PART OF 3) (AC-DELCO #1977937) .	92 I (LB4)	1	1977937
51.	2.379	WASHER, DISTR SHF THR (*15, 17, 18, 19, 20, 21, 22, 24) (PART OF 3) (AC-DELCO #1965864) .	90 I (LB4)	1	1965864
	2.379	WASHER, DISTR SHF THR (*17, 24) (PART OF 3) (AC-DELCO #1965864)	93-95 I (LB4)	1	1965864
	2.379	WASHER, DISTR SHF THR (*17, 24, 28, 31, 32) (PART OF 3) (AC-DELCO #1965864)	96 I (L35)	1	1965864
	2.379	WASHER, DISTR SHF THR (*2, 10) (PART OF 3) (AC-DELCO #1965864)	92-93 I (LB4)	1	1965864
	2.379	WASHER, DISTR SHF THR (*28, 31, 32) (PART OF 3) (AC-DELCO #1965864)	94-95 I (LB4)	1	1965864
	2.379	WASHER, DISTR SHF THR (*5) (PART OF 3) (AC-DELCO #1965864)	92 I (LB4)	1	1965864
52.	2.372	SHIELD, DISTR IGN PICK UP COIL (*15, 17, 18, 19, 20, 21, 22, 24) (PART OF 3) (AC-DELCO #10496783)	90 I (LB4)	1	10496783
	2.372	SHIELD, DISTR IGN PICK UP COIL (*17, 24) (PART OF 3) (AC-DELCO #10496783)	93-94 I (LB4)	1	10496783
	2.372	SHIELD, DISTR IGN PICK UP COIL (*17, 24, 28, 31, 32) (PART OF 3) (AC-DELCO #10496783)	96 I (L35)	1	10496783
	2.372	SHIELD, DISTR IGN PICK UP COIL (*2, 10) (PART OF 3) (AC-DELCO #10496783)	92-93 I (LB4)	1	10496783
	2.372	SHIELD, DISTR IGN PICK UP COIL (*28) (PART OF 3) (AC-DELCO #10496783)	94-95 I (LB4)	1	10496783
	2.372	SHIELD, DISTR IGN PICK UP COIL (*5) (PART OF 3) (AC-DELCO #10496783)	92 I (LB4)	1	10496783
53.	2.372	COIL, DISTR PICK UP (*15, 17, 18, 19, 20, 21, 22, 24) (PART OF 3) (AC-DELCO #D1944A)	90 I (LB4)	1	10470794
	2.372	COIL, DISTR PICK UP (*17, 24) (PART OF 3) (AC-DELCO #D1944A)	93-95 I (LB4)	1	10470794

	2.372	COIL, DISTR PICK UP (*17, 24) (PART OF 3) (AC-DELCO #D1944A)	96 I (L35)	1	10470794
	2.372	COIL, DISTR PICK UP (*2, 10) (PART OF 3) (AC-DELCO #D1944A)	92-93 I (LB4)	1	10470794
	2.372	COIL, DISTR PICK UP (*28, 31, 32) (PART OF 3) (AC-DELCO #D1987)	94-95 I (LB4)	1	10495089
	2.372	COIL, DISTR PICK UP (*28, 31, 32) (PART OF 3) (AC-DELCO #D1987)	96 I (L35)	1	10495089
	2.372	COIL, DISTR PICK UP (*5) (PART OF 3) (AC-DELCO #D1987) ...	92 I (LB4)	1	10495089
54.	2.372	POLE PIECE & PLATE, DISTR (*15, 17, 18, 19, 20, 21, 22, 24) (PART OF 3) (AC-DELCO #D1945A)	90 I (LB4)	1	10470795
	2.372	POLE PIECE & PLATE, DISTR (*17, 24) (PART OF 3) (AC-DELCO #D1945A)	93-95 I (LB4)	1	10470795
	2.372	POLE PIECE & PLATE, DISTR (*17, 24) (PART OF 3) (AC-DELCO #D1945A)	96 I (L35)	1	10470795
	2.372	POLE PIECE & PLATE, DISTR (*2, 10) (PART OF 3) (AC-DELCO #D1945A)	92-93 I (LB4)	1	10470795
	2.372	POLE PIECE & PLATE, DISTR (*28, 31, 32) (PART OF 3) (AC-DELCO #10495802)	94-95 I (LB4)	1	10495802
	2.372	POLE PIECE & PLATE, DISTR (*28, 31, 32) (PART OF 3) (AC-DELCO #10495802)	96 I (L35)	1	10495802
	2.372	POLE PIECE & PLATE, DISTR (*5) (PART OF 3) (AC-DELCO #10495802)	92 I (LB4)	1	10495802
55.	2.383	BOLT, DISTR ICM (*15, 17, 18, 19, 20, 21, 22, 24) (PART OF 3) (AC-DELCO #10469668)	90 I (LB4)	2	10469668
	2.383	BOLT, DISTR ICM (*17, 24) (PART OF 3) (AC-DELCO #10469668)	93-95 I (LB4)	2	10469668
	2.383	BOLT, DISTR ICM (*17, 24, 28, 31, 32) (PART OF 3) (AC-DELCO #10469668)	96 I (L35)	2	10469668
	2.383	BOLT, DISTR ICM (*2, 10) (PART OF 3) (AC-DELCO #10469668)	92-93 I (LB4)	2	10469668
	2.383	BOLT, DISTR ICM (*28, 31, 32) (PART OF 3) (AC-DELCO #1987972)	94-95 I (LB4)	2	1987972
	2.383	BOLT, DISTR ICM (*28, 31, 32) (PART OF 3) (AC-DELCO #1987972)	96 I (L35)	2	1987972
	2.383	BOLT, DISTR ICM (*5) (PART OF 3) (AC-DELCO #1987972)	92 I (LB4)	2	1987972
56.	2.383	MODULE, DISTR IGN CONT (*15, 18, 19, 20, 21, 22, 24) (PART OF 3) (AC-DELCO #D1965A)	90 I (LB4)	1	16139399

	2.383	MODULE, DISTR IGN CONT (*17, 24) (PART OF 3) (AC-DELCO #D1965A)	93-95 (LB4)	1	16139399
	2.383	MODULE, DISTR IGN CONT (*17, 24) (PART OF 3) (AC-DELCO #D1965A)	96 (L35)	1	16139399
	2.383	MODULE, DISTR IGN CONT (*2, 10) (PART OF 3) (AC-DELCO #D1965A)	92-93 (LB4)	1	16139399
	2.383	MODULE, DISTR IGN CONT (*28, 31, 32.) (PART OF 3) (AC-DELCO #D1943A)	94-95 (LB4)	1	16139369
	2.383	MODULE, DISTR IGN CONT (*28, 31, 32.) (PART OF 3) (AC-DELCO #D1943A)	96 (L35)	1	16139369
	2.383	MODULE, DISTR IGN CONT (*5) (PART OF 3) (AC-DELCO #D1943A)	92-93 (LB4)	1	16139369
57.	2.372	PIN, DISTR IGN PICK UP POLE PIECE LOC (PART OF 3) (1/8 X 1/2 ZN) (CHAMFERED ENDS, ZINC PLT) (*15, 17, 18, 19, 20, 21, 22, 24) (3.459)	90 (LB4)	1	454666
	2.372	PIN, DISTR IGN PICK UP POLE PIECE LOC (PART OF 3) (1/8 X 1/2 ZN) (CHAMFERED ENDS, ZINC PLT) (*5) (3.459)	92 (LB4)	1	454666
	2.372	PIN, DISTR IGN PICK UP POLE PIECE LOC (PART OF 3) (1/8 X 1/2 ZN) (CHAMFERED ENDS, ZINC PLT) (*2, 10) (3.459)	92-93 (LB4)	1	454666
	2.372	PIN, DISTR IGN PICK UP POLE PIECE LOC (PART OF 3) (1/8 X 1/2 ZN) (CHAMFERED ENDS, ZINC PLT) (*17, 24) (3.459)	93-95 (LB4)	1	454666
	2.372	PIN, DISTR IGN PICK UP POLE PIECE LOC (PART OF 3) (1/8 X 1/2 ZN) (CHAMFERED ENDS, ZINC PLT) (*28, 31, 32) (3.459)	94-95 (LB4)	1	454666
	2.372	PIN, DISTR IGN PICK UP POLE PIECE LOC (PART OF 3) (1/8 X 1/2 ZN) (CHAMFERED ENDS, ZINC PLT) (*17, 24, 28, 31, 32) (3.459)	96 (L35)	1	454666
58.	2.362	HOUSING, DISTR (*15, 17, 18, 19, 20, 21, 22, 24) (PART OF 3) (AC-DELCO #10470793)	90 (LB4)	1	10470793
	2.362	HOUSING, DISTR (*17, 24) (PART OF 3) (AC-DELCO #10470793)	93-95 (LB4)	1	10470793
	2.362	HOUSING, DISTR (*17, 24) (PART OF 3) (AC-DELCO #10470793)	96 (L35)	1	10470793
	2.362	HOUSING, DISTR (*2, 10) (PART OF 3) (AC-DELCO #10470793)	92-93 (LB4)	1	10470793
	2.362	HOUSING, DISTR (*28, 31, 32) (PART OF 3) (AC-DELCO #10472052)	94-95 (LB4)	1	10472052

	2.362	HOUSING, DISTR (*28, 31, 32) (PART OF 3) (AC-DELCO #10472052)	96 I (L35)	1	10472052
	2.362	HOUSING, DISTR (*5) (PART OF 3) (AC-DELCO #10472052) ...	92 I (LB4)	1	10472052
59.	2.368	BOLT, DISTR CAP (*15, 17, 18, 19, 20, 21, 22, 24) (PART OF 3) (AC-DELCO #10469669)	90 I (LB4)	2	10469669
	2.368	BOLT, DISTR CAP (*17, 24) (PART OF 3) (AC-DELCO #10469669)	93-95 I (LB4)	2	10469669
	2.368	BOLT, DISTR CAP (*17, 24, 28, 31, 32) (PART OF 3) (AC-DELCO #10469669)	96 I (L35)	2	10469669
	2.368	BOLT, DISTR CAP (*2, 10) (PART OF 3) (AC-DELCO #10469669)	92-93 I (LB4)	2	10469669
	2.368	BOLT, DISTR CAP (*28, 31, 32) (PART OF 3) (AC-DELCO #10469669)	94-95 I (LB4)	2	10469669
	2.368	BOLT, DISTR CAP (*5) (PART OF 3) (AC-DELCO #10469669) ...	92 I (LB4)	2	10469669
60.	2.382	ROTOR, DISTR (*15, 17, 18, 19, 20, 21, 22, 24) (PART OF 3) (AC-DELCO #D451)	90 I (LB4)	1	10470597
	2.382	ROTOR, DISTR (*17, 24) (PART OF 3) (AC-DELCO #D451)	93-95 I (LB4)	1	10470597
	2.382	ROTOR, DISTR (*17, 24) (PART OF 3) (AC-DELCO #D451)	96 I (L35)	1	10470597
	2.382	ROTOR, DISTR (*2, 10) (PART OF 3) (AC-DELCO #D451)	92-93 I (LB4)	1	10470597
	2.382	ROTOR, DISTR (*28, 31, 32) (PART OF 3) (AC-DELCO #D446)	94-95 I (LB4)	1	10497452
	2.382	ROTOR, DISTR (*28, 31, 32) (PART OF 3) (AC-DELCO #D446)	96 I (L35)	1	10497452
	2.382	ROTOR, DISTR (*5) (PART OF 3) (AC-DELCO #D446)	92 I (LB4)	1	10497452
61.	2.372	SHAFT, DISTR (*15, 17, 18, 19, 20, 21, 22, 24) (PART OF 3) (AC-DELCO #10470791)	90 I (LB4)	1	10470791
	2.372	SHAFT, DISTR (*17, 24) (PART OF 3) (AC-DELCO #10470791)	93-95 I (LB4)	1	10470791
	2.372	SHAFT, DISTR (*17, 24) (PART OF 3) (AC-DELCO #10470791)	96 I (L35)	1	10470791
	2.372	SHAFT, DISTR (*2, 10) (PART OF 3) (AC-DELCO #10470791) ...	92-93 I (LB4)	1	10470791
	2.372	SHAFT, DISTR (*28, 31, 32) (PART OF 3) (AC-DELCO #10495798)	94-95 I (LB4)	1	10495798
	2.372	SHAFT, DISTR (*28, 31, 32) (PART OF 3) (AC-DELCO #10495798)	96 I (L35)	1	10495798
	2.372	SHAFT, DISTR (*5) (PART OF 3) (AC-DELCO #10495798)	92 I (LB4)	1	10495798
62.	2.372	RETAINER, DISTR IGN PICK UP COIL (*15, 17, 18, 19, 20, 21, 22, 24) (AC-DELCO #10474792) ..	90 I (LB4)	1	10474792

	2.372	RETAINER, DISTR IGN PICK UP COIL (*17, 24) (AC-DELCO #10474792)	93-95 (LB4)	1	10474792
	2.372	RETAINER, DISTR IGN PICK UP COIL (*17, 24) (AC-DELCO #10474792)	96 (L35)	1	10474792
	2.372	RETAINER, DISTR IGN PICK UP COIL (*2, 10) (AC-DELCO #10474792)	92-93 (LB4)	1	10474792
	2.372	RETAINER, DISTR IGN PICK UP COIL (*28, 31, 32) (AC-DELCO #10470820)	94-95 (LB4)	1	10470820
	2.372	RETAINER, DISTR IGN PICK UP COIL (*5) (AC-DELCO #10470820)	92 (LB4)	1	10470820
63.	2.183	BOLT, IGN COIL BRKT (*13, 17, 24) (8.900)	93 (LB4)	AR	11507041
	2.183	BOLT, IGN COIL BRKT (*15, 17, 18, 19, 20, 21, 22, 24) (8.900) ...	90 (LB4)	AR	11507041
	2.183	BOLT, IGN COIL BRKT (*17, 24, 28, 31, 32) (8.900)	94-95 (LB4)	AR	11507041
	2.183	BOLT, IGN COIL BRKT (*17, 24, 28, 31, 32) (8.900)	96 (L35)	AR	11507041
	2.183	BOLT, IGN COIL BRKT (*2, 5, 10) (8.900)	92-93 (LB4)	AR	11507041
64.	2.170	COIL, IGN (*13, 17, 24) (AC-DELCO #D535)	93 (LB4)	1	1115315
	2.170	COIL, IGN (*15, 17, 19, 20, 21, 22, 24) (AC-DELCO #D535) ...	90 (LB4)	1	1115315
	2.170	COIL, IGN (*17, 24) (AC-DELCO #D535)	96 (L35)	1	1115315
	2.170	COIL, IGN (*17, 24, 31, 32) (AC-DELCO #D535)	94-95 (LB4)	1	1115315
	2.170	COIL, IGN (*2, 5, 10) (AC-DELCO #D535)	92-93 (LB4)	1	1115315
	2.170	COIL, IGN (*28, 31, 32) (AC-DELCO #D561)	96 (L35)	1	1115498
65.	2.240	HARNESS, IGN COIL WRG (*13) (AC-DELCO #330C)	93 (LB4)	1	12053452
	2.240	HARNESS, IGN COIL WRG (*28, 31, 32) (12 IN LONG) (AC-DELCO #326V)	94-95 (LB4)	1	12074074
	2.240	HARNESS, IGN COIL WRG (*5) (12 IN LONG) (AC-DELCO #326V)	92-93 (LB4)	1	12074074
66.	2.240	WIRE, IGN COIL (*13) (PRIMARY) (15")	93 (LB4)	1	12039177
	2.240	WIRE, IGN COIL (*15, 17, 18, 19, 20, 21, 22, 24) (AC-DELCO #12097982)	90 (LB4)	1	12097982
	2.240	WIRE, IGN COIL (*17, 24) (AC-DELCO #12097982)	93 (LB4)	1	12097982
	2.240	WIRE, IGN COIL (*17, 24) (AC-DELCO #12097982)	96 (L35)	1	12097982
	2.240	WIRE, IGN COIL (*17, 24, 31, 32) (7.068)	94-95 (LB4)	1	12037982
	2.240	WIRE, IGN COIL (*17, 24, 31, 32) (AC-DELCO #12097982)	94-95 (LB4)	1	12097982

	2.240	WIRE, IGN COIL (*2, 10) (AC-DELCO #12097982)	92-93 (LB4)	1	12097982
	2.240	WIRE, IGN COIL (*28) (PRIMARY) (15")	94-95 (LB4)	1	12039177
	2.240	WIRE, IGN COIL (*28) (PRIMARY) (15")	96 (L35)	1	12039177
	2.240	WIRE, IGN COIL (*5) (PRIMARY) (15")	92-93 (LB4)	1	12039177
67.	1.153	OUTLET, WAT (*13) (AC-DELCO #15-1581)	91 (LB4)	1	10172831
	1.153	OUTLET, WAT (*13) (AC-DELCO #15-1581)	93 (LB4)	1	10172831
	1.153	OUTLET, WAT (*28) (AC-DELCO #15-1567)	94-95 (LB4)	1	10147884
	DISCON	OUTLET, WAT (*5)	90-91 (LB4)	1	329223
	1.153	OUTLET, WAT (*5) (AC-DELCO #15-1483)	92 (LB4)	1	10110827
	1.153	OUTLET, WAT (*5) (AC-DELCO #15-1567)	93 (LB4)	1	10147884
68.	1.154	GASKET, WAT OTLT (*13 KIT1) (PART OF 69)	91 (LB4)	1	10105135
	1.154	GASKET, WAT OTLT (*13 KIT1) (PART OF 69)	93 (LB4)	1	10105135
	1.154	GASKET, WAT OTLT (*27, 28) (PART OF 69) (1.252)	94 (LB4)	1	10209045
	1.154	GASKET, WAT OTLT (*28) (PART OF 69) (1.252) (AC-DELCO #12553106)	95 (LB4)	1	12553106
	1.154	GASKET, WAT OTLT (*5) (PART OF 69) (1.252)	93 (LB4)	1	10209045
	1.154	GASKET, WAT OTLT (*5 KIT 1) (PART OF 69)	90-92 (LB4)	1	10105135
69.	1.246	THERMOSTAT, ENG COOL (*13) (INCL 68) (AC-DELCO #131-73)	91 (LB4)	1	10207373
	1.246	THERMOSTAT, ENG COOL (*13) (INCL 68) (AC-DELCO #131-73)	93 (LB4)	1	10207373
	1.246	THERMOSTAT, ENG COOL (*28) (INCL 68)	94-95 (LB4)	1	10207695
	1.246	THERMOSTAT, ENG COOL (*5) (INCL 68) (AC-DELCO #131-75)	90-92 (LB4)	1	10207381
	1.246	THERMOSTAT, ENG COOL (*5) (INCL 68)	93 (LB4)	1	10207695
70.	N.S.	PIPE, CHOKE HT (*5)	90-91 (LB4)		
71.	3.603	GASKET, CHOKE HT PIPE (*1, 2, 3, 4, 5, 12, 17, 21, 24) (3.750) ...	90-91 (LB4)	1	14097286
72.	1.150	SENSOR, ENG COOL TEMP (*13) (3/8-18 THD) (2 BLADE TERM) (AC-DELCO #213-72) .	91 (LB4)	1	25036979
	1.150	SENSOR, ENG COOL TEMP (*13) (3/8-18 THD) (2 BLADE TERM) (AC-DELCO #213-72) .	93 (LB4)	1	25036979
	1.150	SENSOR, ENG COOL TEMP (*28) (3/8-18 THD) (2 BLADE TERM) (AC-DELCO #213-72) .	94-95 (LB4)	1	25036979

	1.150	SENSOR, ENG COOL TEMP (*5) (3/8-18 THD) (2 BLADE TERM) (AC-DELCO #213-72)	91-93 (LB4)	1	25036979
	1.150	SENSOR, ENG COOL T/GA (*13) (2 BLADE TERM) (3/8-18 THD) (CAN BE USED AS 1 TERM CONN) (AC-DELCO #213-77)	93 (LB4)	1	25037332
73.	3.275	STUD, INT MANIF (*13) (3/8-16X.78 BOTH ENDS)	91 (LB4)	4	14091545
	3.275	STUD, INT MANIF (*13) (3/8-16X.78 BOTH ENDS)	93 (LB4)	4	14091545
	3.275	STUD, INT MANIF (*28) (3/8-16X.78 BOTH ENDS)	94-95 (LB4)	4	14091545
	3.275	STUD, INT MANIF (*5) (3/8-16X.78 BOTH ENDS)	91-93 (LB4)	4	14091545
74.	3.671	COVER, EGR VLV OPG (*28)	94-95 (LB4)	1	10054880
	3.671	COVER, EGR VLV OPG (*5)	92-93 (LB4)	1	10054880
75.	3.671	GASKET, EGR VLV OPG CVR (*28) (3.680) (AC-DELCO #219-21)	94-95 (LB4)	1	12337972
	3.671	GASKET, EGR VLV OPG CVR (*5) (3.680) (AC-DELCO #219-21)	92-93 (LB4)	1	12337972
76.	2.240	WIRE, IGN COIL (*13) (PRIMARY) (15")	93 (LB4)	1	12039177
	2.240	WIRE, IGN COIL (*15, 17, 18, 19, 20, 21, 22, 24) (AC-DELCO #12097982)	90 (LB4)	1	12097982
	2.240	WIRE, IGN COIL (*17, 24) (AC-DELCO #12097982)	93 (LB4)	1	12097982
	2.240	WIRE, IGN COIL (*17, 24) (AC-DELCO #12097982)	96 (L35)	1	12097982
	2.240	WIRE, IGN COIL (*17, 24, 31, 32) (7.068)	94-95 (LB4)	1	12037982
	2.240	WIRE, IGN COIL (*17, 24, 31, 32) (AC-DELCO #12097982)	94-95 (LB4)	1	12097982
	2.240	WIRE, IGN COIL (*2, 10) (AC-DELCO #12097982)	92-93 (LB4)	1	12097982
	2.240	WIRE, IGN COIL (*28) (PRIMARY) (15")	94-95 (LB4)	1	12039177
	2.240	WIRE, IGN COIL (*28) (PRIMARY) (15")	96 (L35)	1	12039177
	2.240	WIRE, IGN COIL (*5) (PRIMARY) (15")	92-93 (LB4)	1	12039177
77.	1.745	VALVE, C/CASE VENT (*13) (AC-DELCO #CV799C)	91 (LB4)	1	8995910
	1.745	VALVE, C/CASE VENT (*13) (AC-DELCO #CV799C)	93 (LB4)	1	8995910
	1.745	VALVE, C/CASE VENT (*28, 31, 32) (AC-DELCO #CV789C)	94-95 (LB4)	1	8995284
	1.745	VALVE, C/CASE VENT (*5) (AC-DELCO #CV789C)	92-93 (LB4)	1	8995284
78.	1.745	GROMMET, C/CASE VENT VLV (1.762)	96 (L35)	AR	10240678
	1.745	GROMMET, C/CASE VENT VLV (*13) (23/32 ID-1 3/16 OD)	93 (LB4)	AR	3989350
	1.745	GROMMET, C/CASE VENT VLV (*17, 18, 24, 27, 28, 31, 32) (1.762)	94-95 (LB4)	AR	10240678

				OM00-004D
	1.745	GROMMET, C/CASE VENT VLV (*5) (23/32 ID-1 3/16 OD)	92-93 (LB4)	AR 3989350
79.	2.251	BOLT, SPLG WIRE RET BRKT (*13) (HFH 1/4-20X.56 280M PZOR) (8.900)	93 (LB4)	AR 9439930
	2.251	BOLT, SPLG WIRE RET BRKT (*28, 31, 32) (HFH 1/4-20X.56 280M PZOR) (8.900)	94-95 (LB4)	AR 9439930
	2.251	BOLT, SPLG WIRE RET BRKT (*5) (HFH 1/4-20X.56 280M PZOR) (8.900)	92-93 (LB4)	AR 9439930
80.	2.251	SUPPORT, SPLG WIRE (*13)	91 (LB4)	LH 10137607
	2.251	SUPPORT, SPLG WIRE (*13)	91 (LB4)	LH 10137613
	2.251	SUPPORT, SPLG WIRE (*13)	93 (LB4)	LH 10137607
	2.251	SUPPORT, SPLG WIRE (*13)	93 (LB4)	LH 10137613
	2.251	SUPPORT, SPLG WIRE (*28, 31, 32)	94-95 (LB4)	LH 10137607
	2.251	SUPPORT, SPLG WIRE (*28, 31, 32) (LH FRT & RH RR)	94-95 (LB4)	1 10221633
	2.251	SUPPORT, SPLG WIRE (*5)	92-93 (LB4)	LH 10137607
	2.251	SUPPORT, SPLG WIRE (*5)	92-93 (LB4)	LH 10137613
81.	2.367	CAP, DISTR (*15, 17, 18, 19, 20, 21, 22, 24) (PART OF 3) (AC-DELCO #D310A)	90 (LB4)	1 10476273
	2.367	CAP, DISTR (*17, 24) (PART OF 3) (AC-DELCO #D310A)	93 (LB4)	1 10476273
	2.367	CAP, DISTR (*17, 24) (PART OF 3) (AC-DELCO #D314A)	94-95 (LB4)	1 10477182
	2.367	CAP, DISTR (*17, 24) (PART OF 3) (AC-DELCO #D314A)	96 (L35)	1 10477182
	2.367	CAP, DISTR (*2, 10) (PART OF 3) (AC-DELCO #D310A)	92-93 (LB4)	1 10476273
	2.367	CAP, DISTR (*28, 31, 32) (PART OF 3) (AC-DELCO #D310A)	94-95 (LB4)	1 10476273
	2.367	CAP, DISTR (*28, 31, 32) (PART OF 3) (AC-DELCO #D310A)	96 (L35)	1 10476273
	2.367	CAP, DISTR (*5) (PART OF 3) (AC-DELCO #D310A)	92-93 (LB4)	1 10476273
82.	3.670	VALVE, EGR VLV & EXH PRESS REG SOL (*13) (INCLS FLTR) (AC-DELCO #214-365)	91 (LB4)	1 10137639
	3.670	VALVE, EGR VLV & EXH PRESS REG SOL (*13) (INCLS FLTR) (AC-DELCO #214-365)	93 (LB4)	1 10137639
83.	3.670	BOLT, EGR VLV & EXH PRESS REG SOL VLV (*13) (M6.3X1.81X13) (8.977)	91 (LB4)	2 11509745
	3.670	BOLT, EGR VLV & EXH PRESS REG SOL VLV (*13) (M6.3X1.81X13) (8.977)	93 (LB4)	2 11509745
84.	3.682	SENSOR, MAP (*13) (AC-DELCO #213-183)	91 (LB4)	1 16009886
	3.682	SENSOR, MAP (*13) (AC-DELCO #213-183)	93 (LB4)	1 16009886
85.	3.682	BRACKET, MAP SEN (*13)	91 (LB4)	1 10068571
	3.682	BRACKET, MAP SEN (*13)	93 (LB4)	1 10068571
86.	2.483	BRACKET, MULTIUSE RLY (*13)	91 (LB4)	1 10137673
	2.483	BRACKET, MULTIUSE RLY (*13)	93 (LB4)	1 10137673

87.	2.483	NUT, MULTIUSE RLY BRKT (*13) (FLANGE DIA .069) (8.917)	91 I (LB4)	1	9442958
	2.483	NUT, MULTIUSE RLY BRKT (*13) (FLANGE DIA .069) (8.917)	93 I (LB4)	1	9442958
88.	1.153	STUD, WAT OTLT (*13) (3/8-16X.78 BOTH ENDS) (3.275)	91 I (LB4)	4	14091545
	1.153	STUD, WAT OTLT (*13) (3/8-16X.78 BOTH ENDS) (3.275)	93 I (LB4)	4	14091545
89.	1.153	BOLT, WAT OTLT (3/8-16X1-1/8) (*13) (8.900) ..	91 I (LB4)	1	14091544
	1.153	BOLT, WAT OTLT (3/8-16X1-1/8) (*5) (8.900) ..	92-93 I (LB4)	1	14091544
	1.153	BOLT, WAT OTLT (3/8-16X1-1/8) (*13) (8.900) ..	93 I (LB4)	1	14091544
	1.153	BOLT, WAT OTLT (3/8-16X1-1/8) (*28) (8.900) ..	94-95 I (LB4)	1	14091544
90.	2.183	BRACKET, IGN COIL (AC-DELCO #10489420)	96 I (L35)	1	10489420
	2.183	BRACKET, IGN COIL (*13) (AC-DELCO #1987910) (BOTTOM)	93 I (LB4)	1	1987910
	2.183	BRACKET, IGN COIL (*13) (TOP)	93 I (LB4)	1	1988372
	2.183	BRACKET, IGN COIL (*15, 17, 18, 19, 20, 21, 22, 24) (2.170) (TOP)	90 I (LB4)	1	10470094
	2.183	BRACKET, IGN COIL (*15, 17, 18, 19, 20, 21, 22, 24) (2.170) (BOTTOM)	90 I (LB4)	1	10470624
	2.183	BRACKET, IGN COIL (*17, 24) (2.170) (TOP)	93 I (LB4)	1	10470094
	2.183	BRACKET, IGN COIL (*17, 24) (2.170) (BOTTOM)	93 I (LB4)	1	10470624
	2.183	BRACKET, IGN COIL (*17, 24) (2.170) (TOP)	96 I (L35)	1	10470094
	2.183	BRACKET, IGN COIL (*17, 24) (2.170) (BOTTOM)	96 I (L35)	1	10470624
	2.183	BRACKET, IGN COIL (*17, 24, 31, 32) (2.170) (TOP)	94-95 I (LB4)	1	10470094
	2.183	BRACKET, IGN COIL (*17, 24, 31, 32) (2.170) (BOTTOM)	94-95 I (LB4)	1	10470624
	2.183	BRACKET, IGN COIL (*2, 10) (2.170) (TOP)	92-93 I (LB4)	1	10470094
	2.183	BRACKET, IGN COIL (*2, 10) (2.170) (BOTTOM)	92-93 I (LB4)	1	10470624
	2.183	BRACKET, IGN COIL (*28) (AC-DELCO #1987910) (BOTTOM)	94-95 I (LB4)	1	1987910
	2.183	BRACKET, IGN COIL (*28) (TOP)	94-95 I (LB4)	1	1988372
	2.183	BRACKET, IGN COIL (*28, 31, 32) (2.170) (TOP)	96 I (L35)	1	10470094
	2.183	BRACKET, IGN COIL (*28, 31, 32) (2.170) (BOTTOM)	96 I (L35)	1	10470624
	2.183	BRACKET, IGN COIL (*5) (AC-DELCO #1987910) (BOTTOM)	92-93 I (LB4)	1	1987910
	2.183	BRACKET, IGN COIL (*5) (TOP)	92-93 I (LB4)	1	1988372

91.	2.183	NUT, IGN COIL BRKT (*13, 17, 24) (8.915)	93 (LB4)	2	10180301
	2.183	NUT, IGN COIL BRKT (*15, 17, 18, 19, 20, 31, 22, 24) (8.915) ...	90 (LB4)	2	10180301
	2.183	NUT, IGN COIL BRKT (*17, 24, 28, 31, 32) (8.915) (M4X.7X4.5, 5, NO)	94-95 (LB4)	2	10180301
	2.183	NUT, IGN COIL BRKT (*17, 28, 31, 32) (8.915) (M4X.7X4.5, 5, NO)	96 (L35)	2	10180301
	2.183	NUT, IGN COIL BRKT (*2, 5, 10) (8.915)	92-93 (LB4)	2	10180301
92.	1.745	TUBE, OIL FIL (*13) (INCL O-RING) (PUSH IN OIL CAP) ..	91-92 (LB4) (1ST DES)	1	10055537
	1.745	TUBE, OIL FIL (*13) (INCL O-RING) (SCREW IN OIL CAP) .	92-93 (LB4) (2ND DES)	1	10203474
93.	2.251	SUPPORT, SPLG WIRE (*13) ...	91 (LB4)	LH	10137607
	2.251	SUPPORT, SPLG WIRE (*13) ...	91 (LB4)	LH	10137613
	2.251	SUPPORT, SPLG WIRE (*13) ...	93 (LB4)	LH	10137607
	2.251	SUPPORT, SPLG WIRE (*13) ...	93 (LB4)	LH	10137613
	2.251	SUPPORT, SPLG WIRE (*28, 31, 32)	94-95 (LB4)	LH	10137607
	2.251	SUPPORT, SPLG WIRE (*28, 31, 32) (LH FRT & RH RR)	94-95 (LB4)	1	10221633
	2.251	SUPPORT, SPLG WIRE (*5)	92-93 (LB4)	LH	10137607
	2.251	SUPPORT, SPLG WIRE (*5)	92-93 (LB4)	LH	10137613
94.	2.251	SUPPORT, SPLG WIRE (*13) ...	91 (LB4)	RH	10137610
	2.251	SUPPORT, SPLG WIRE (*5)	92-93 (LB4)	RH	10137610
	2.251	SUPPORT, SPLG WIRE (LH FRT & RH RR) (*28, 31, 32)	94-95 (LB4)	AR	10221633
95.	0.439	GUIDE, VLV LFTR PUSH ROD (0.480)	94-95 (LB4)	2	10207705
	0.439	GUIDE, VLV LFTR PUSH ROD (0.480)	96 (L35)	2	12551431
	0.439	GUIDE, VLV LFTR PUSH ROD (*2, 3, 5, 8, 9, 10, 11, 12, 14, 15, 17, 18, 24, 27) (0.480)	93 (LB4)	2	10207705
96.	0.459	BOLT, VLV LFTR GDE (1.840) ...	94-95 (LB4)	4	3933126
	0.459	BOLT, VLV LFTR GDE (.10 THICK) (HFH, 5/16-18X.63, .41 THD, .75 OD, 300M, PC, MACH, W/SHLD .50 OD X)	96 (L35)	4	24501042
	0.459	BOLT, VLV LFTR GDE (*2, 3, 5, 8, 9, 10, 11, 14, 15, 17, 18, 24, 27) (1.840)	93 (LB4)	4	3933126

SERVICE KITS

1.	0.289	GASKET KIT, CYL HD (*1, 2, 3, 4, 5, 8, 12) (INCL 6, 15, 22, 23, 33, 36, 39, 68)	90-91 (LB4)	1	10159421
	0.289	GASKET KIT, CYL HD (*17, 21, 24) (INCL 6, 15, 22, 23, 33, 36, 39, 68)	90 (LB4)	1	10159421
	0.289	GASKET KIT, CYL HD (*2, 3, 8, 9, 10, 11, 12, 14, 15, 17, 18, 24, 27) (INCL 6, 15, 22, 33, 36, 39, 68)	93 (LB4)	1	12525460

	0.289	GASKET KIT, CYL HD (*28, 31, 32) (INCL 6, 15, 22, 33, 36, 39, 68)	94-95 (LB4)	1	12525460
	0.289	GASKET KIT, CYL HD (*5) (INCL 6, 15, 22, 33, 36, 39, 68)	92 (LB4)	1	12507990
2.	3.270	GASKET KIT, INT MANIF (INCLS (2) GSKTS)	96 (L35)	1	12529196
	3.270	GASKET KIT, INT MANIF (*1) ..	93 (LB4)	1	12520113
	3.270	GASKET KIT, INT MANIF (*1, 2, 3, 4, 5, 8, 12)	90-91 (LB4)	1	10159422
	3.270	GASKET KIT, INT MANIF (*1, 2, 3, 4, 6, 8, 12)	92 (LB4)	1	10159422
	3.270	GASKET KIT, INT MANIF (*13) ..	91 (LB4)	1	12509697
	3.270	GASKET KIT, INT MANIF (*13) ..	93 (LB4)	1	12509697
	3.270	GASKET KIT, INT MANIF (*15, 16, 18, 19, 20, 22, 23)	90 (LB4)	1	10159491
	3.270	GASKET KIT, INT MANIF (*17, 18, 24, 27, 31, 32)	94-95 (LB4)	1	12510908
	3.270	GASKET KIT, INT MANIF (*2, 3, 8, 9, 10, 11, 12, 14, 15, 17, 18, 24, 27)	93 (LB4)	1	12510908
	3.270	GASKET KIT, INT MANIF (*5) (0.289)	92 (LB4)	1	12507990
	3.270	GASKET KIT, INT MANIF (*6) ..	93 (LB4)	1	12520114
	3.270	GASKET KIT, INT MANIF (*6, 7, 9, 10, 11)	90-91 (LB4)	1	10159491
	3.270	GASKET KIT, INT MANIF (*7, 9, 10, 11)	92 (LB4)	1	10159490
3.	2.239	WIRE KIT, SPLG (*13) (INCL 76)	91 (LB4)	1	12074091
	2.239	WIRE KIT, SPLG (*13) (INCL 76)	93 (LB4)	1	12074091
NOTE 1:	4.3L 262 CID MARINE ENG. 1993 14097301 (3KS).	1990 14096747 (0KS); 1991 14097161 (1KS); 1992 14097211 (2K3);			
NOTE 2:	4.3L 262 CID MARINE ENG. 1993 14097302 (3KB).	1990 14096745 (0KB); 1991 14097163 (1KB); 1992 14097212 (2KB);			
NOTE 3:	4.3L 262 CID MARINE ENG. 1993 14097303 (3KP).	1990 14096746 (0KP); 1991 14097165 (1KP); 1992 14097213 (2KP);			
NOTE 4:	4.3L 262 CID MARINE ENG.	1990 14096976 (0KC); 1991 14097166 (1KC); 1992 14097216 (2KC).			
NOTE 5:	4.3L 262 CID INDUSTRIAL ENG. (2KM); 1993 14097306 (3KM).	1990 14096749 (0KM); 1991 14097168 (1KM); 1992 14097218			
NOTE 6:	4.3L 262 CID MARINE ENG. 1993 14097307 (3KT).	1990 14096748 (0KT); 1991 14097169 (1KT); 1992 14097219 (2KT);			
NOTE 7:	4.3L 262 CID MARINE ENG.	1990 14096750 (0KJ); 1991 14097171 (1KJ); 1992 14097220 (2KJ).			
NOTE 8:	4.3L 262 CID MARINE ENG. 1993 14097309 (3KR).	1990 14096752 (0KR); 1991 14097173 (1KR); 1992 14097221 (2KR);			
NOTE 9:	4.3L 262 CID MARINE ENG. 1993 14097310 (3KA).	1990 14096975 (0KA); 1991 14097174 (1KA); 1992 14097222 (2KA);			
NOTE 10:	4.3L 262 CID MARINE ENG. 1993 14097311 (3KL).	1990 14096751 (0KL); 1991 14097176 (1KL); 1992 14097223 (2KL);			
NOTE 11:	4.3L 262 CID MARINE ENG. 1993 14097312 (3KF).	1990 14096753 (0KF); 1991 14097178 (1KF); 1992 14097228 (2KF);			
NOTE 12:	4.3L 262 CID MARINE ENG. 1993 14097305 (3KD).	1990 14097265 (0KD); 1991 14097266 (1KD); 1992 14097217 (2KD);			
NOTE 13:	4.3L 262 CID MARINE ENG. (3LD), 1997 1255442 (7LD).	1991 14097271 (1LD);	1993 14097442		
NOTE 14:	4.3L 262 CID MARINE ENG.		1993 14097473 (3LG).		
NOTE 15:	4.3L 262 CID MARINE ENG. (3LH).	1990 14096959 (0LH);	1993 14097474		
NOTE 16:	4.3L 262 CID MARINE ENG.	1990 14096754 (0KH).			
NOTE 17:	4.3L 262 CID MARINE ENG. 10223771 (4LB), 1995 12550043 (5LB), 1996 12551081 (6LB), 1997 12556152	1990 14096953 (0LB);	1993 10228377 (3LB), 1994		
NOTE 18:	4.3L 262 CID MARINE ENG. 10223774 (4LJ), 1995 12550044 (5LJ), 1996 12552316 (6LJ), 1997 12556153	1990 14096954 (0LJ);	1993 10224523 (3LJ), 1994		
NOTE 19:	4.3L 262 CID MARINE ENG.	1990 14096955 (0LL).			
NOTE 20:	4.3L 262 CID MARINE ENG.	1990 14096958 (0LF).			
NOTE 21:	4.3L 262 CID MARINE ENG.	1990 14096960 (0LS).			
NOTE 22:	4.3L 262 CID MARINE ENG.	1990 14096961 (0LT).			

NOTE 23: 4.3L 262 CID MARINE ENG. 1990 14096978 (OLA), 1997 12555441 (7LA).
 NOTE 24: 4.3L 262 CID MARINE ENG. 1990 14096980 (OLC); 1993 10228378
 (3LC), 1994 10235339 (4LC), 1995 12550048 (5LC), 1996 12552318 (6LC)
 NOTE 25: 4.3L 262 CID MARINE ENG. 1985-86 12517970.
 NOTE 26: 4.3L 262 CID MARINE ENG. 1985-91 12517971.
 NOTE 27: 4.3L 262 CID MARINE ENG. 1993 10224525 (3LK), 1994 10223779
 (4LK), 1995 12550047 (5LK), 1996 12552317 (6LK), 1997 12556164
 NOTE 28: 4.3L 262 CID INDUSTRIAL ENG 1994 10223780
 (4LM), 1995 12550049 (5LM), 1996 12552319 (6LM).
 NOTE 31: 4.3L 262 CID INDUSTRIAL ENG 1994 12551717
 (4LS), 1995 12551718 (5LS), 1996 12552320 (6LS)
 NOTE 32: 4.3L 262 CID INDUSTRIAL ENG 1994 12552399 (4LX), 1995
 12552400 (5LX), 1996 12552401 (6LX), 1997 12556158 (7LX).

RPO DEFINITIONS

LB4 - ENGINE, (4.3L), V6 90 DEG GAS
 L35 - ENGINE, 4.3L (4.3W), V6, 90 DEG