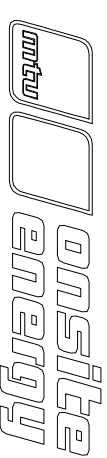


- LEGEND
- ACT ACTUATOR
 - ALT ALTERNATOR
 - BATT BATTERY
 - DGC DGC-2020 CONTROLLER
 - ESP EMERGENCY STOP PUSHBUTTON
 - F1 FUSE 5 AMP
 - F2 FUEL PRESSURE SWITCH
 - F3 FUEL SOLENOID
 - GEN GENERATOR
 - GND GROUND
 - GOV GOVERNOR
 - HTS HIGH ENGINE TEMPERATURE SWITCH
 - LWL LOW WATER LEVEL PROBE
 - MPU MAGNETIC PICK-UP
 - MSV STARTER MOTOR
 - SMS STARTER MOTOR COIL PILOT RELAY
 - SMT STARTER MOTOR SOLENOID
 - TB1 TERMINAL BOARD 1 (PANEL)
 - TB3 TERMINAL BOARD 3 (GENERATOR OUTLET BOX)
 - TB4 TERMINAL BOARD 4 (DRY CONTACT BOX)

- NOTE:
1. WIRE NUMBERS ARE IN PARENTHESIS.
 2. ENGINE WIRING IS #16 GA UNLESS OTHERWISE SPECIFIED.
 3. CONTROL PANEL WIRING IS #20 GA UNLESS OTHERWISE SPECIFIED.
 4. SHORT DASHED LINES (-----) INDICATE CUSTOMER CONNECTION OR OPTIONAL EQUIPMENT.
 5. FUEL SENDER REQUIREMENTS: EMPTY=240 OHMS, FULL=33 OHMS
 6. BATTERY CHARGER FUSE ONLY WHEN SUPPLIED OR REQUIRED BY CHARGER MANUFACTURER.
 7. TBI 51 FOR TEST PURPOSES ONLY. JUMPER TBI 51 TO 9 FOR ENGINE DLE MODE.
 8. REMOTE ANNUNCIATOR IS OPTIONAL. CHECK BILL OF MATERIAL.
 9. GROUND WIRE IF UNIT IS LPL OR LPLV FUEL. REMOVE WIRE IF UNIT IS NATURAL GAS.

REV	REVISION DESCRIPTION	DATE	BY
5	REMOVED JUMPER #104 ON DGC2020	4-1-09	JLG
4	FUEL SOLENOIDS ARE GROUNDED AND FFS WAS CORRECTED	03-18-08	JLG
3	ADDED THE DUEL FUEL OPTION	03-12-08	JLG
2	UPDATED THE HARNESS CONNECTOR AND DGC-2020	01-09-08	JLG
1	SWITCHED THE ENGINE HARNESS CONNECTOR TO THE 16 PIN ONE	12-17-08	JLG
REV	REVISION DESCRIPTION	DATE	BY



****SPECIAL NOTE****

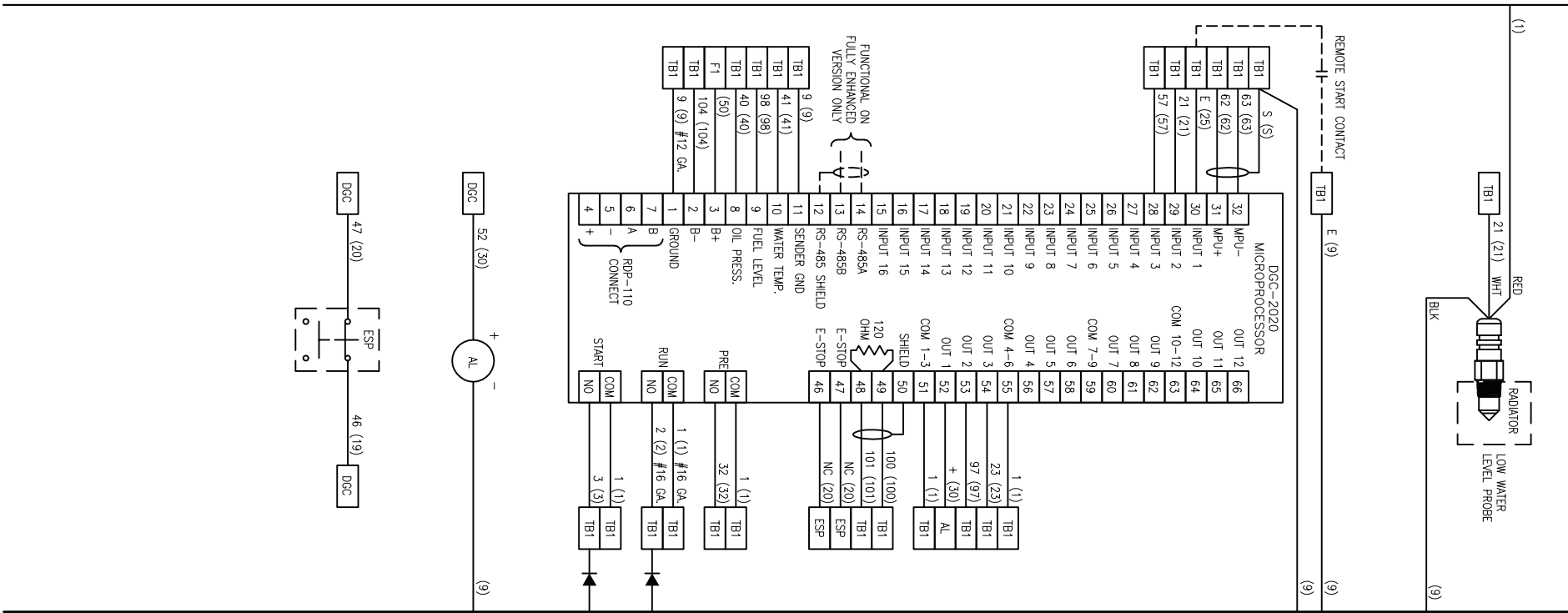
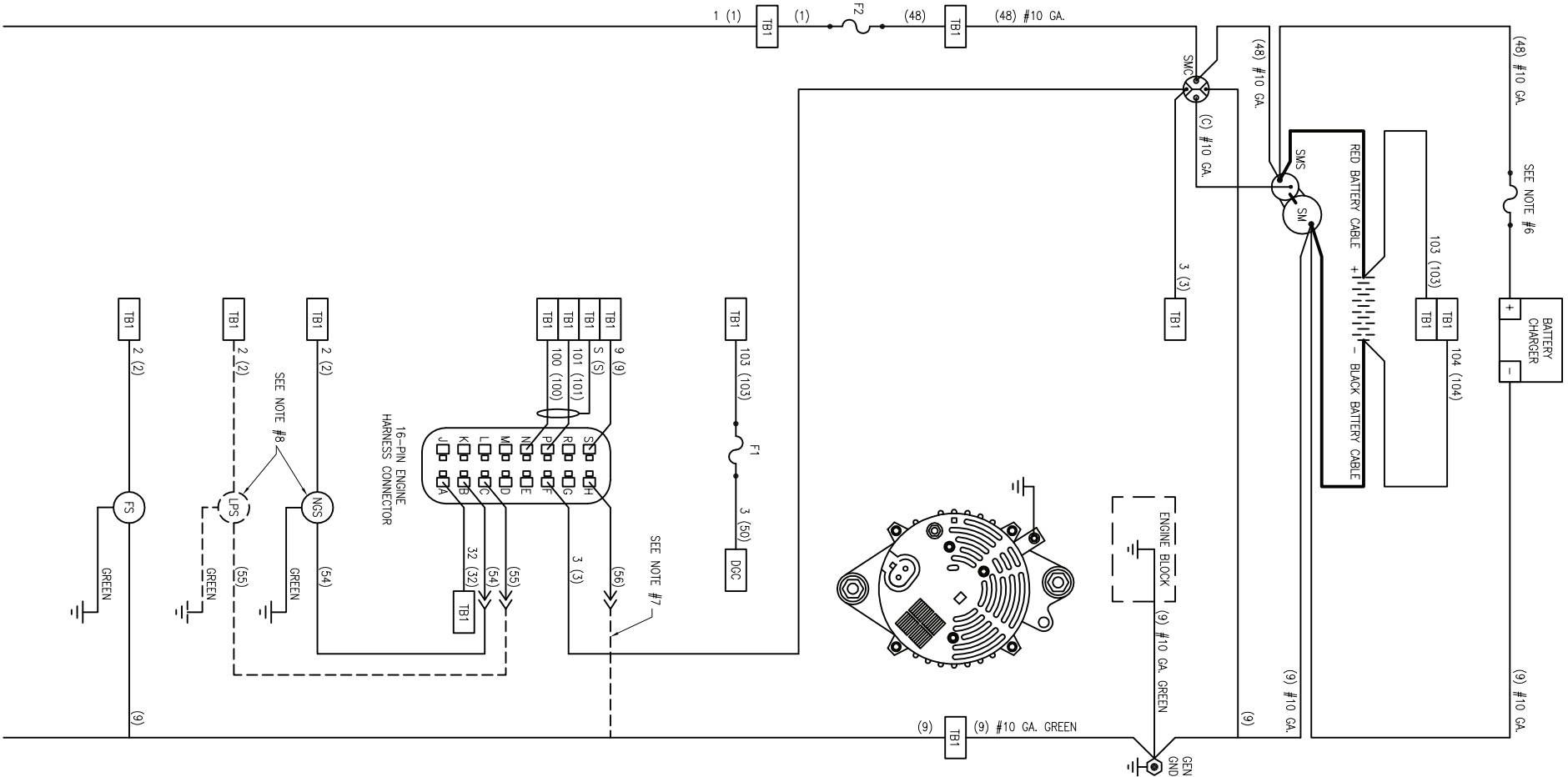
TO MINIMIZE ANY ELECTRICAL NOISE BEING INTRODUCED INTO THE ENGINE CONTROLLER, CONTROL WIRING AND AC POWER LINES NEED TO BE RUN IN SEPARATE CONDUITS.

ENGINE: GM 3.0L, 4.3L, 5.0L, 5.7L
 GENERATOR: N/A
 REGULATOR: N/A
 CONTROL PANEL: DGC-2020
 VOLTAGE: 12VDC
 GOVERNOR: BOSCH

DC DIAGRAM

DATE: 12-02-08 DRAWING SIZE: B-SIZE
 DRAWN BY: JLG SHEET: 1 OF 1

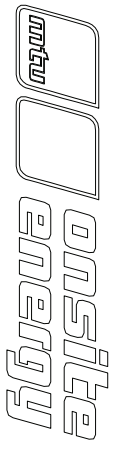
819-M-16126



- LEGEND
- ACT ACTUATOR
 - ALT ALTERNATOR
 - BATT BATTERY
 - BATT BATTERY
 - DGC DGC-2020 CONTROLLER
 - ESP EMERGENCY STOP PUSHBUTTON
 - F1 F1 CONTROL FUSE ABC 5 AMP
 - F2 PANEL FUSE ABC 15 AMP
 - PPS FUEL PRESSURE SWITCH
 - FS FUEL PRESSURE SWITCH
 - GEN GENERATOR
 - GND GROUND
 - LP LP SOLENOID
 - LWL LOW WATER LEVEL PROBE
 - NSG NATURAL GAS SOLENOID
 - NSM STARTER MOTOR
 - NSM STARTER MOTOR COIL PILOT RELAY
 - SMS STARTER MOTOR SOLENOID
 - TB1 TERMINAL BOARD 1 (PANEL)
 - TB3 TERMINAL BOARD 3 (GENERATOR OUTLET BOX)
 - TB4 TERMINAL BOARD 4 (DRY CONTACT BOX)

- NOTE:
1. WIRE NUMBERS ARE IN PARENTHESIS.
 2. ENGINE WIRING IS #16 GA UNLESS OTHERWISE SPECIFIED.
 3. CONTROL PANEL WIRING IS #20 GA UNLESS OTHERWISE SPECIFIED.
 4. SHORT DASHED LINES (-----) INDICATE CUSTOMER CONNECTION OR OPTIONAL EQUIPMENT.
 5. FUEL SENSOR REQUIREMENTS: EMPTY=240 OHMS, FULL=33 OHMS
 6. BATTERY CHARGER FUSE ONLY WHEN SUPPLIED OR REQUIRED BY CHARGER MANUFACTURER.
 7. WINDUP GROUND IF UNIT IS LP LIQUID OR VAPOR. UNWIRED IF UNIT IS NATURAL GAS.
 8. ONLP FUEL TESTING FUEL SOLENOIDS IS FACTORY INSTALLED ON SINGLE FUEL APPLICATIONS.
 - A.) NATURAL GAS FUEL SOLENOID NOT REQUIRED ON LP FUEL UNITS.
 - B.) LP FUEL SOLENOID NOT REQUIRED ON NATURAL GAS FUEL UNITS.

REV	REVISION DESCRIPTION	DATE	BY



THIS DRAWING IS PROPERTY OF ONSITE ENERGY. ANY REVISIONS TO THIS DRAWING SHALL BE MADE BY ONSITE ENERGY. ANY OTHER REVISIONS SHALL BE MADE BY THE CUSTOMER.

****SPECIAL NOTE****
 TO MINIMIZE ANY ELECTRICAL NOISE BEING INTRODUCED INTO THE ENGINE CONTROLLER, CONTROL WIRING AND AC POWER LINES NEED TO BE RUN IN SEPARATE CONDUITS.

DC DIAGRAM

DATE: 02-05-10
 DRAWING SIZE: B-SIZE
 DRAWN BY: JLG
 SHEET: 1 OF 1

819-M-20215