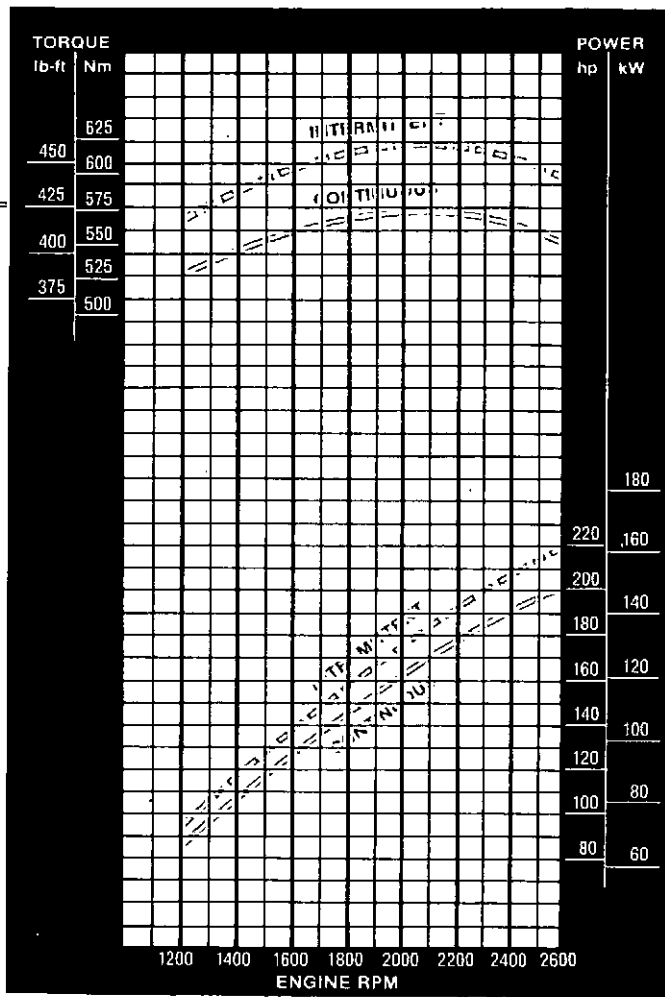
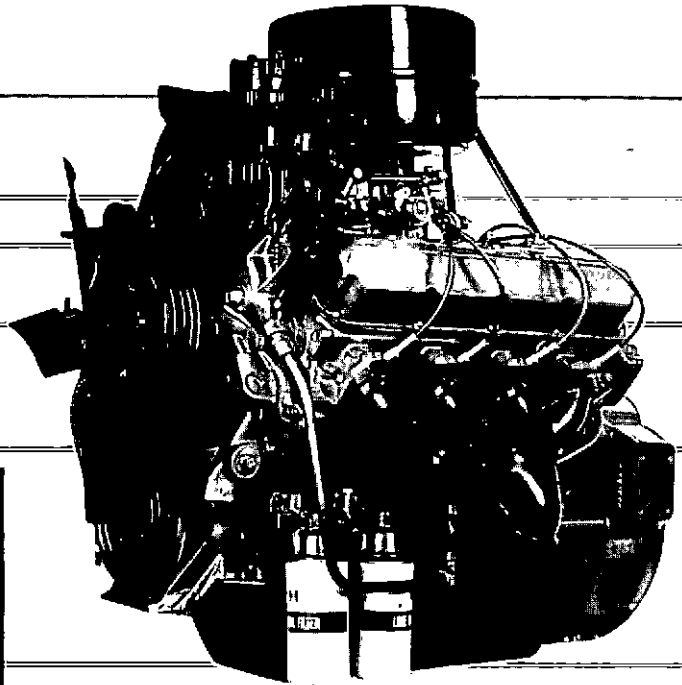


# INTERNATIONAL<sup>®</sup> INDUSTRIAL C-605 220 HP @ 2600 RPM



Performance curve for engine less fan and air cleaner, alternator not charging, rated at SAE J245 conditions of 500 ft. (152.4m) altitude (29.4°C) air temperature. Thereafter, derate 3.5% per 1000-ft. (304.8m) increase in altitude and 1% per each 10°F (5.6°C) increase in temperature.

## Features

- Aluminum alloy pistons with Ni-Resist top ring insert
- Replaceable intake and exhaust valve seats
- Positive valve rotators
- Stellite-faced exhaust valves
- "Direct-flow" cylinder-head design with positive coolant circulation around valve seats
- Forged steel crankshaft with induction-hardened journals
- Gear-driven oil pump and camshaft

## Specifications

Engine type	Natural gas, 4-cycle
Configuration	OHV V8
Displacement	604.5 cu. in. (9.9 liters)
Bore and stroke	4.625 x 4.5 in. (117.5 x 114.3 mm)
Compression ratio	9.5:1
Aspiration	Natural
Intermittent power @ rpm	220 hp (164 kW) @ 2600
Continuous power @ rpm	201 hp (150 kW) @ 2600
Peak torque @ rpm	462 lb-ft (627 Nm) @ 2000
Rotation, facing flywheel	Counterclockwise
Engine weight (approx.)	1100 lb. (499 kg)

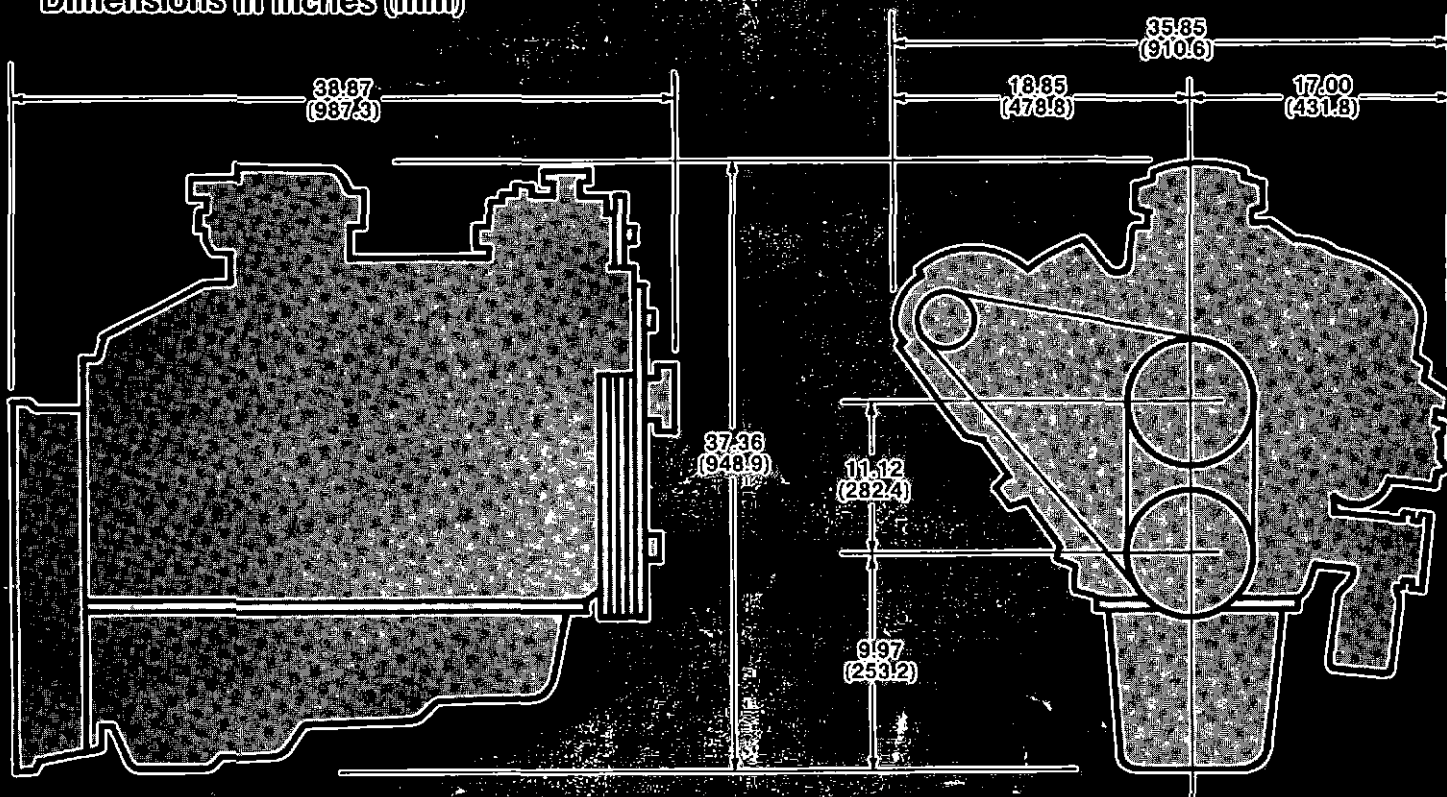
## Standard Equipment

- Electronic distributor ignition (12-volt), spark plugs and cables
- Full pressure lubrication
- Fuel pump and filter
- Centrifugal water pump with drive belt and pulleys
- Flywheel
- Flywheel housing, industrial, SAE #2
- Cranking motor, 12-volt
- Alternator with integral regulator, 12-volt/37-amp.
- Spin-on, throwaway-type, full-flow lube-oil filter
- Positive crankcase ventilation

## Engineering Data

Water flow @ 2600 rpm	90 gpm
Fan-to-crank ratio	1:1
Heat rejection @ 2600 rpm (full load)	37 btu/hp-min.
Air flow @ 2600 rpm	348 cfm
Exhaust gas flow @ 2600 rpm	1328 cfm
Maximum restrictions	
Intake system	8" H <sub>2</sub> O initial 20" H <sub>2</sub> O final
Exhaust system	20" H <sub>2</sub> O
Cooling-system capacity (engine only)	18.5 U.S. quarts
Lubricating-system capacity (including filter)	14 U.S. quarts

### Dimensions in Inches (mm)



International Harvester Company  
 Engine Division  
 401 N. Michigan Ave.  
 Chicago, IL 60611

Version shown in photograph  
 may include non-standard accessories.  
 Specifications subject to change without notice.  
 Lithographed in United States of America