

Document number: pe07.15-w-2002-99ra  
Document title: Wiring diagram for engine control (MR)

Code:	Designation:	Position:
A3	Drive control (FR) control unit	6 L
A3	Drive control (FR) control unit	8 L
A4	Flame starting system control unit (FLA)	2 L
A42	Immobilizer read-out electronics	10 L
A6	Engine control (MR) control unit	6 A
A6	Engine control (MR) control unit	12 A
A6	Engine control (MR) control unit	20 A
A6	Engine control (MR) control unit	29 A
A6	Engine control (MR) control unit	36 A
A6	Engine control (MR) control unit	44 A
A6	Engine control (MR) control unit	52 A
A6	Engine control (MR) control unit	60 A
A7	Base module (GM)	21 L
B10	Fuel temperature sensor	50 L
B104	Turbine speed sensor	47 L
B110	Oil pressure and oil temperature combination sensor	42 L
B111	Charge air temperature and boost pressure combination sensor	45 L
B14	Oil level sensor	40 L
B15	Crankshaft position sensor	51 L
B16	Camshaft position sensor	53 L
B65	Coolant temperature sensor	49 L
CAN 12	SCR CAN	24 G
CAN 4	Engine CAN	2 G
CAN 4	Engine CAN	6 G
F30-A7	Engine control (MR) fuse, tml. 15	21 K
M1	Starter	15 L
R21	Intake air preheating system heating element	30 L
S10	Start engine button	27 L
S11	Stop engine button	28 L
X1.4	Cab-chassis connector	22 G
X13	Diagnostic socket	19 L
X2.2	Cab-chassis connector	4 G
X2.2	Cab-chassis connector	18 G
XM.30.1	Tml. 30 weld	13 L
XM.31.1	Tml. 31 weld	17 L
Y10	Cylinder 5 unit pump	61 L
Y11	Cylinder 6 unit pump	62 L
Y49	Hydraulic constant throttle solenoid valve	34 L
Y6	Cylinder 1 unit pump	55 L
Y7	Cylinder 2 unit pump	56 L
Y70	Fan stage 1 solenoid valve	35 L
Y71	Fan stage 2 solenoid valve	36 L
Y8	Cylinder 3 unit pump	58 L
Y87	Electric-pneumatic converter (EPW)	32 L
Y9	Cylinder 4 unit pump	59 L
Z3	Additional CAN star point	24 L



9

10

11

12

13

14

15

16

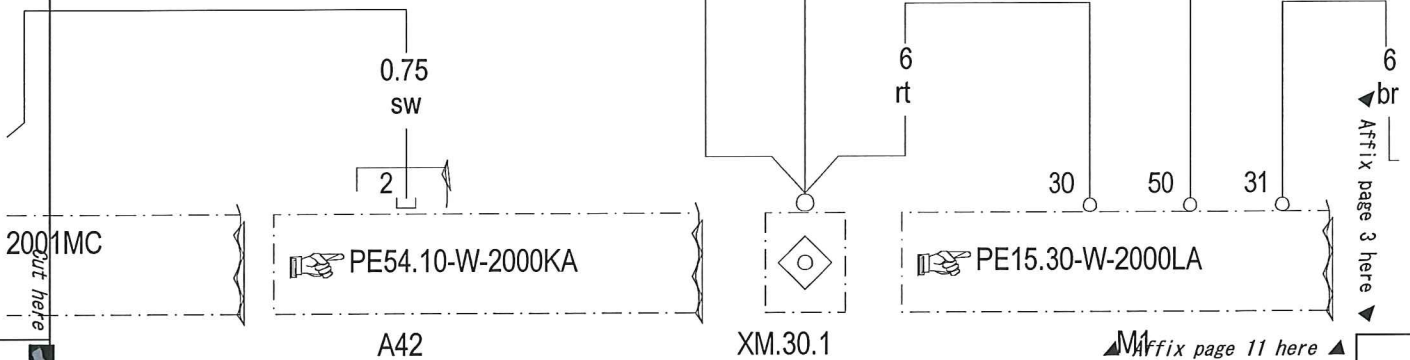


A6



30 30 50 31 31 50  
 16/5 16/6 16/7 16/8 16/9 16/10 16/11 16/12

2.5 2.5 2.5 2.5 1  
 rt rt br br sw  
 gr



17

18

19

20

21

22

23

24

A6



15

16/13

16/14

16/15

16

1  
li  
ge

1  
sw  
bl  
li

1  
gr  
ws

1  
gr  
gn

1  
gr  
br

18/6  
X2.2

18/7

18/16  
X1.4

18/15

18/14

CAN 12

0.75  
li  
ge

0.75  
sw  
bl  
li

1  
gr  
ws

1  
gr  
gn

1  
gr  
br

6  
br

X14

18/2

15

F30  
10A

A7

X1

18/10

18/12

18/11

PE54.18-W-2000F

Affix page 4 here

Affix page 12 here



XM.31.1

X13

PE54.22-W-2000J

25

26

27

28

29

30

31

32



A6



50

PV6

PV1

31

16/16

55/18

55/25

55/30

55/35

55/42

55/40

55/51

55/11

X2

1

gr  
bl

1

gr  
br

/14

12

1

gr  
br

1

gr  
br

/11

18/8

Cut here

0.5  
rt  
sw

0.5  
bl  
ws

0.5  
rt  
ws

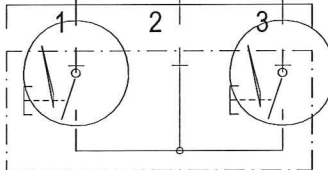
0.5  
rt  
br

0.5  
br  
ws

0.5  
bl  
rt

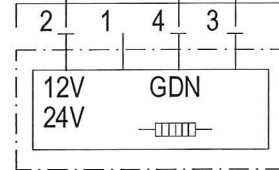
0.5  
ws  
rt

0.5  
br  
ws

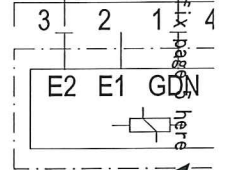


S10

S11



R21

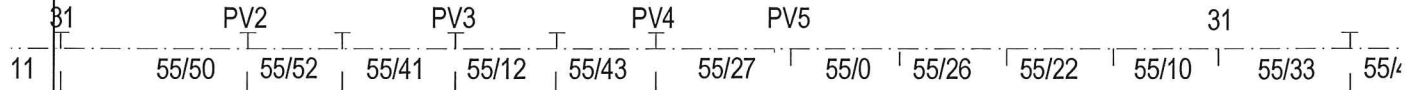


Y87

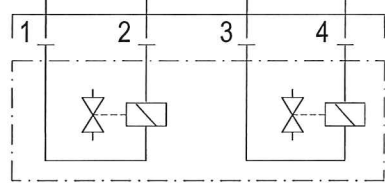
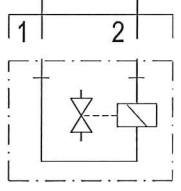
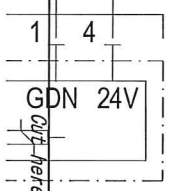
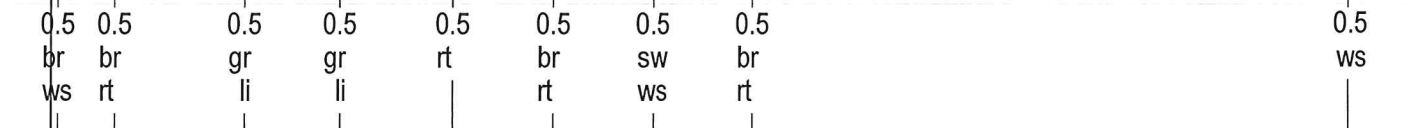
▲ Affix page 13 here ▼



A6



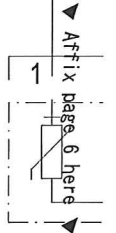
1  
br  
rt



Y49

Y70

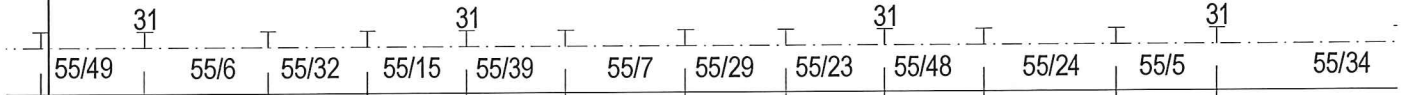
Y71



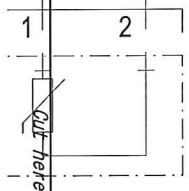
▲ Affix page 14 here ▲ B1



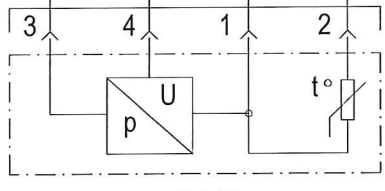
A6



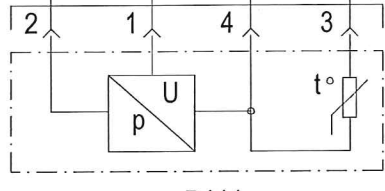
0.5 ws    0.5 ge    0.5 ws sw    0.5 br gr    0.5 gr ge    0.5 gr br    0.5 gn    0.5 li    0.5 bl    0.5 br    0.5 gn li    0.5 gn ws    C r i g



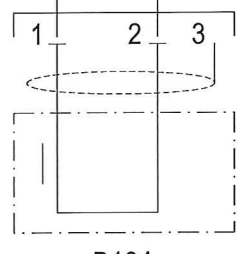
B14



B110



B111



B104

▼ Affix page 2 here ▼



A6



55/34 | 55/3 | 31 | 55/36 | 55/4 | 55/2 | 55/19 | 55/1 | 55/20 | 55/54 | 55/16 | 55

0.5  
rt  
ge

0.5  
ws  
ge

0.5  
br  
bl

0.5  
br  
gn

0.5  
sw  
li

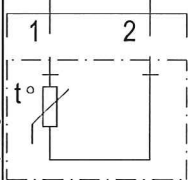
0.5  
br  
li

0.5  
sw  
ge

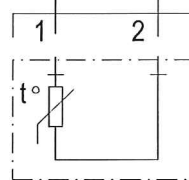
0.5  
br  
ge

1.5  
gr  
sw

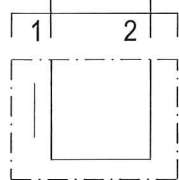
Cut here



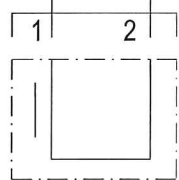
B65



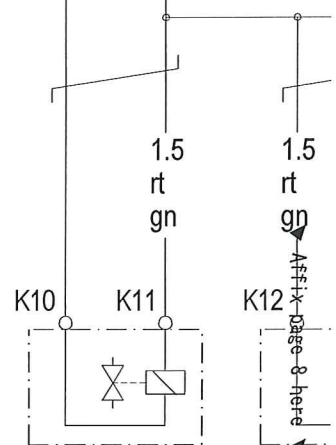
B10



B15



B16



▲ Affix page 16 here ▲



A6



55/47    55/53    55/9    55/38    55/45    55/44

1.5  
gr  
li

1.5  
gr  
bl

1.5  
gr  
ge

1.5  
gr  
gn

1.5  
ws  
bl

1.5  
rt  
gn

1.5  
rt  
gn

1.5  
rt  
bl

1.5  
rt  
bl

1.5  
rt  
bl

K12    K13

K14    K15

K16    K17

K18    K19

K20    K21

Y7

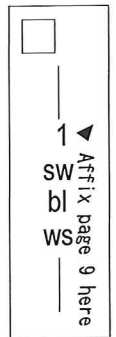
Y8

Y9

Y10

Y11

i

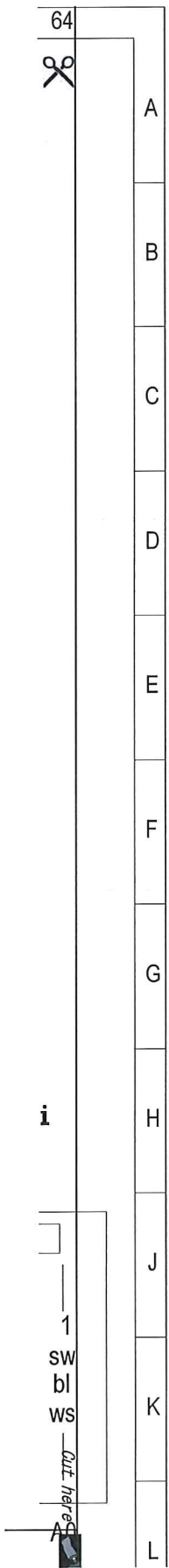


1  
SW  
bl  
WS

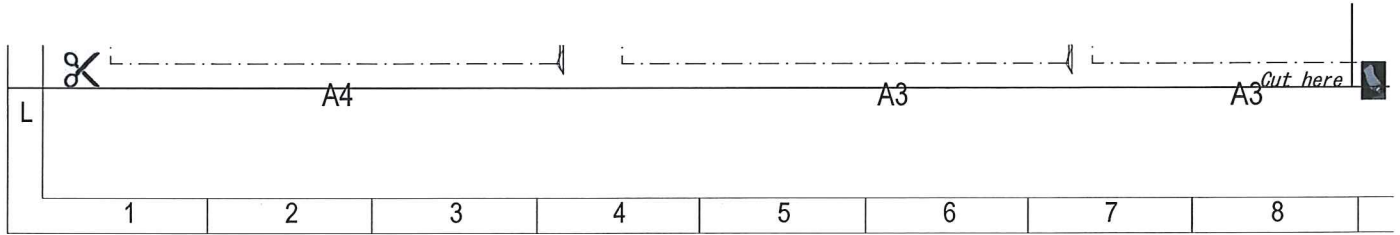
▲ Affix page 9 here

▲ Affix page 17 here

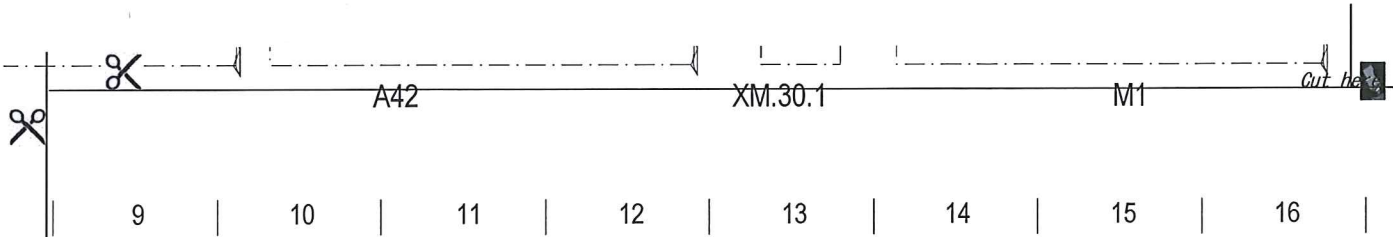
A0



▲ Affix page 18 here ▲

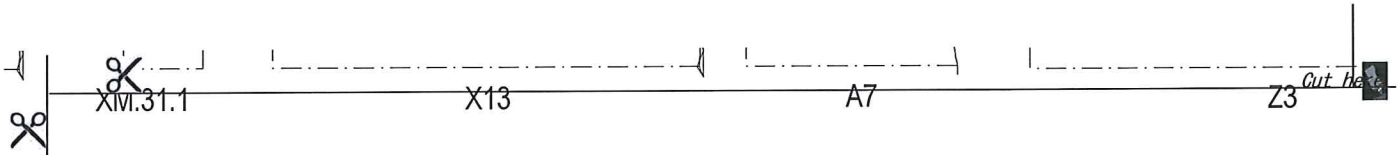


▼ Affix page 11 here ▼



Cut here

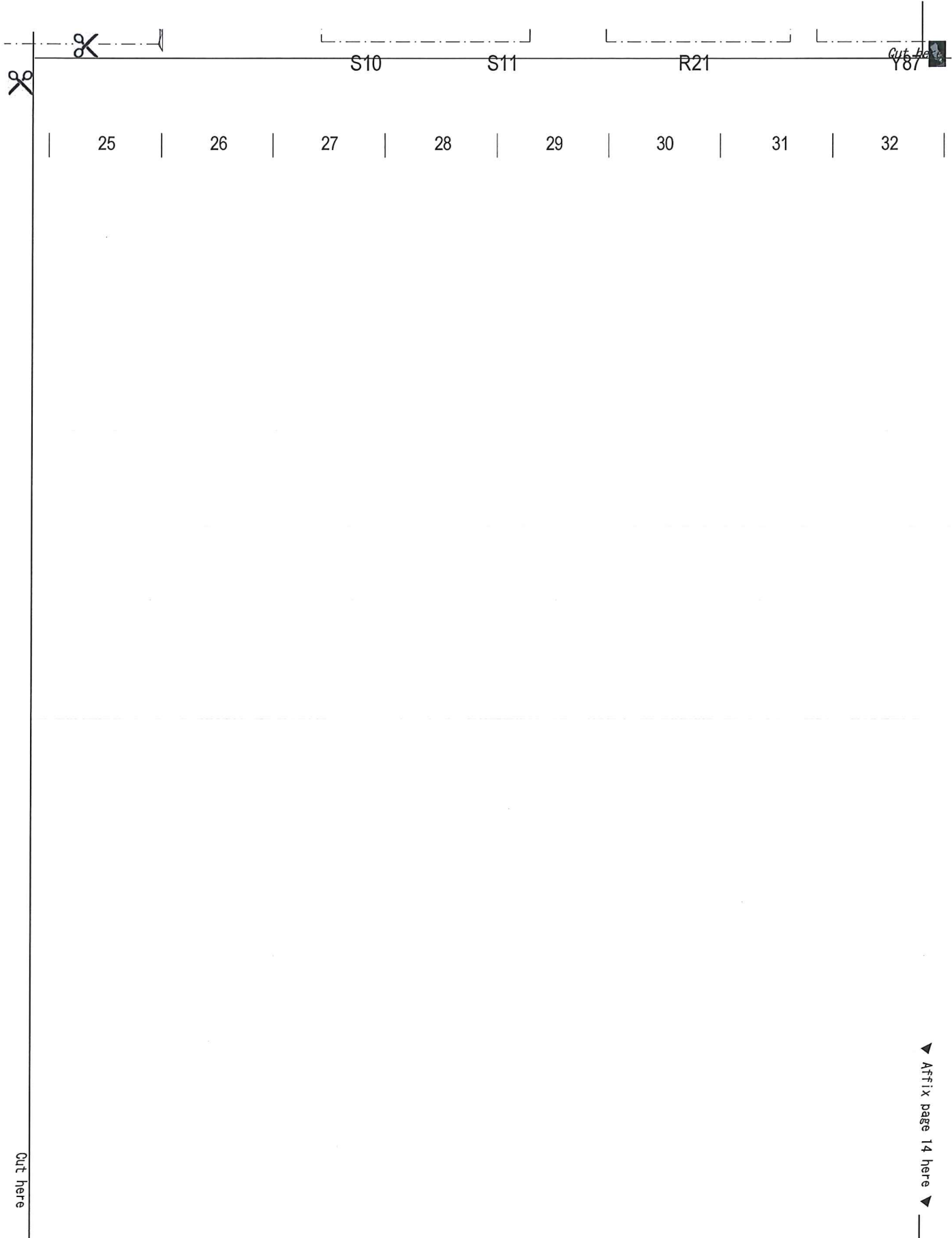
▶ Affix page 12 here ▶

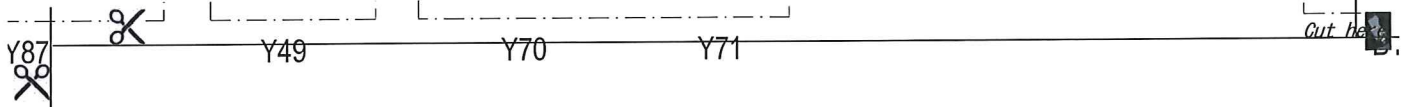


17 | 18 | 19 | 20 | 21 | 22 | 23 | 24

Cut here

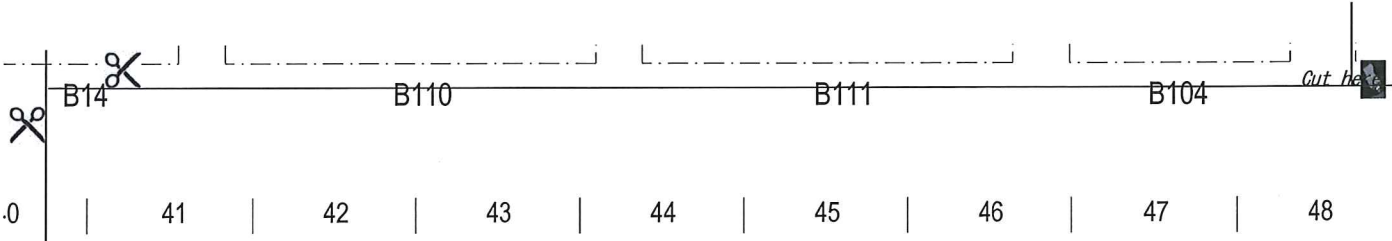
▼ Affix page 13 here ▼





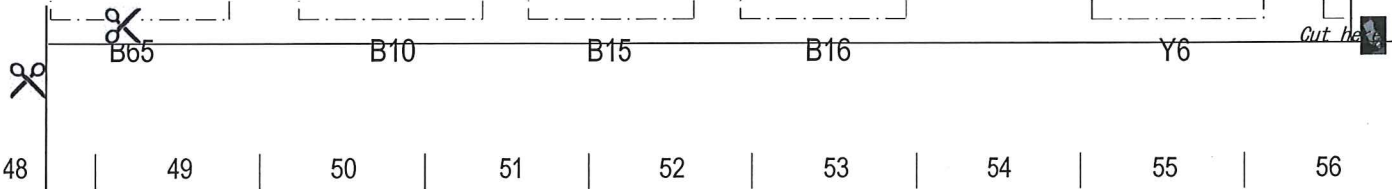
Cut here

▶ Affix page 15 here ▶



Cut here

▼ Affix page 16 here ▼



Cut here

▼ Affix page 17 here ▼

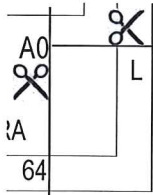


PE07.15-W-2002-99RA



Cut here

▼ Affix page 18 here ▼



*Cut here*

*Cut here*