

DAIMLER

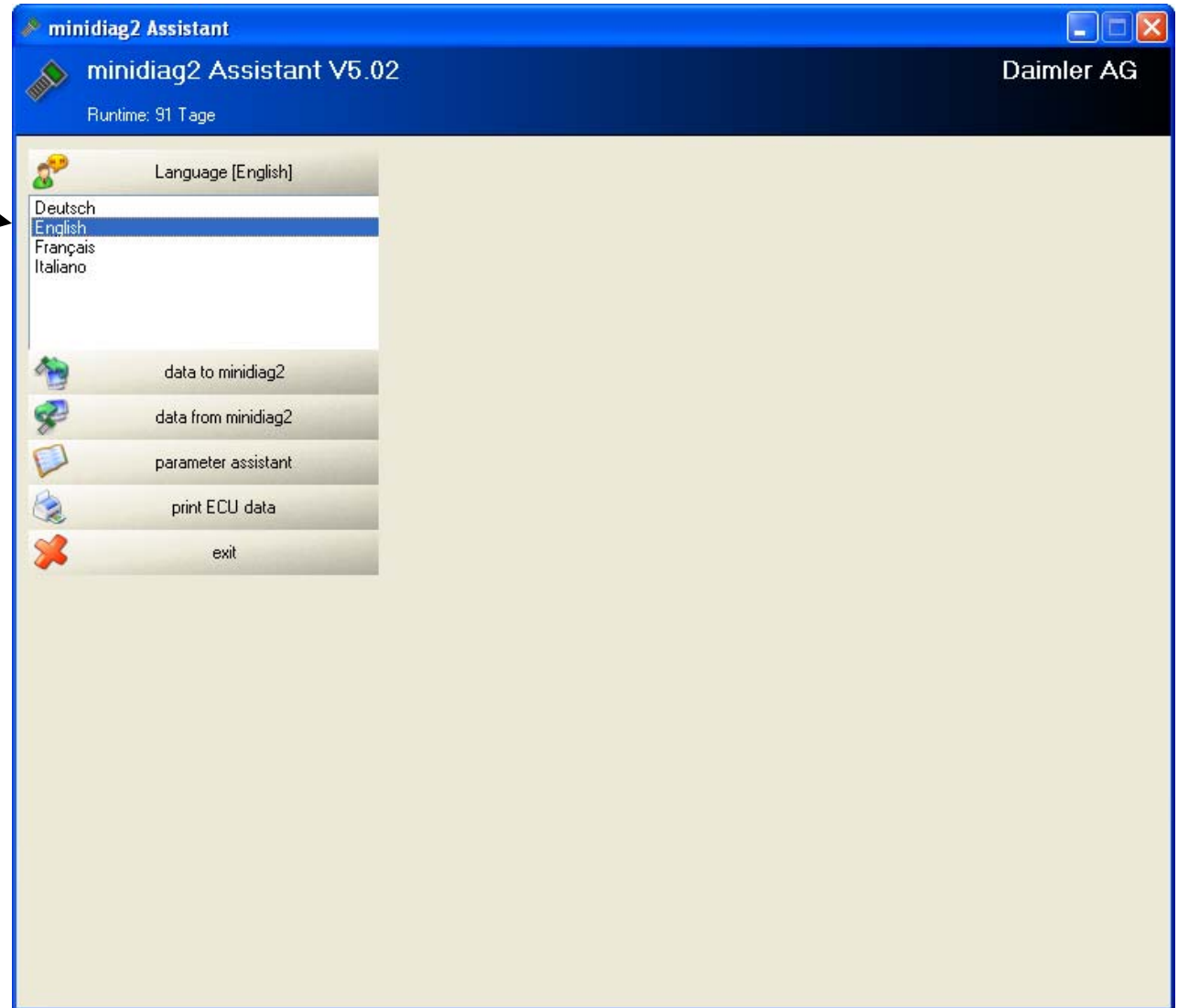
minidiag2 Assistant V5.02.60

features

- Supports hardware C6
- PC communication with USB/Peak (CAN, 1 MBit/s, incl. 64-Bit OS support)
- Security for password routines, parameter and software
- Print-/log functions with F3 button (e.g. menue “diagnosis” or “system info”)
- Update of ECU data (e.g. ADM3 SW901, MR2-A/B SW21/22)
- Compare function for parameter sets
- New routines (e.g. read/write VIN , read CAL-ID (software calibration number) for MR2-B)
- SCR commissioning and VIN writing routine without password protection

language

Select language
e.g. English



data to minidiag2 (automatic) with new hardware C6 (4MB flash)

Data to minidiag2
(parameter files and ECU
data from minidiag2 to PC)

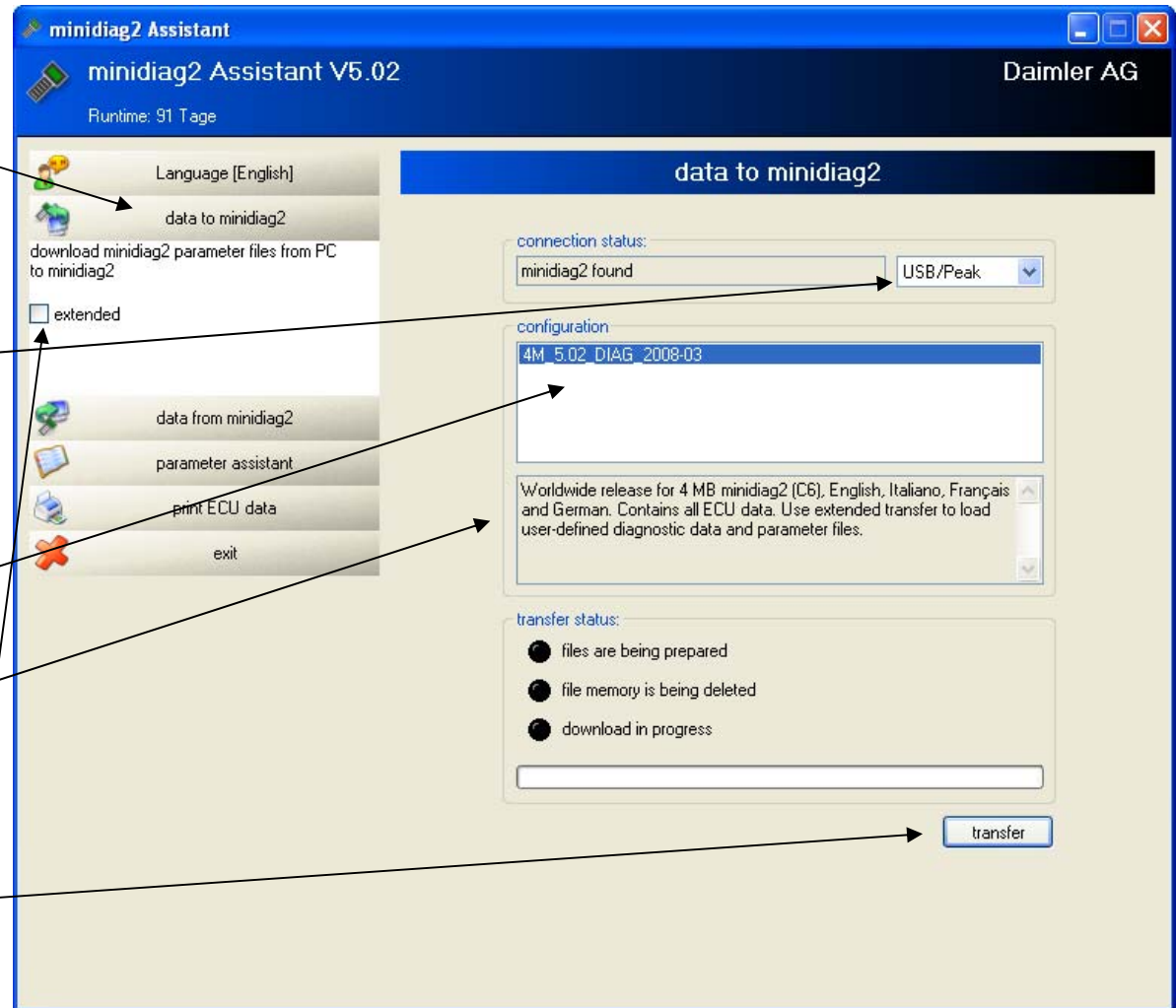
Communication settings
e.g. COM1 **or** USB/Peak
(CAN communication at
1MBit/s)

Name of configuration for
4MB flash minidiag2 (C6)

Description of configuration

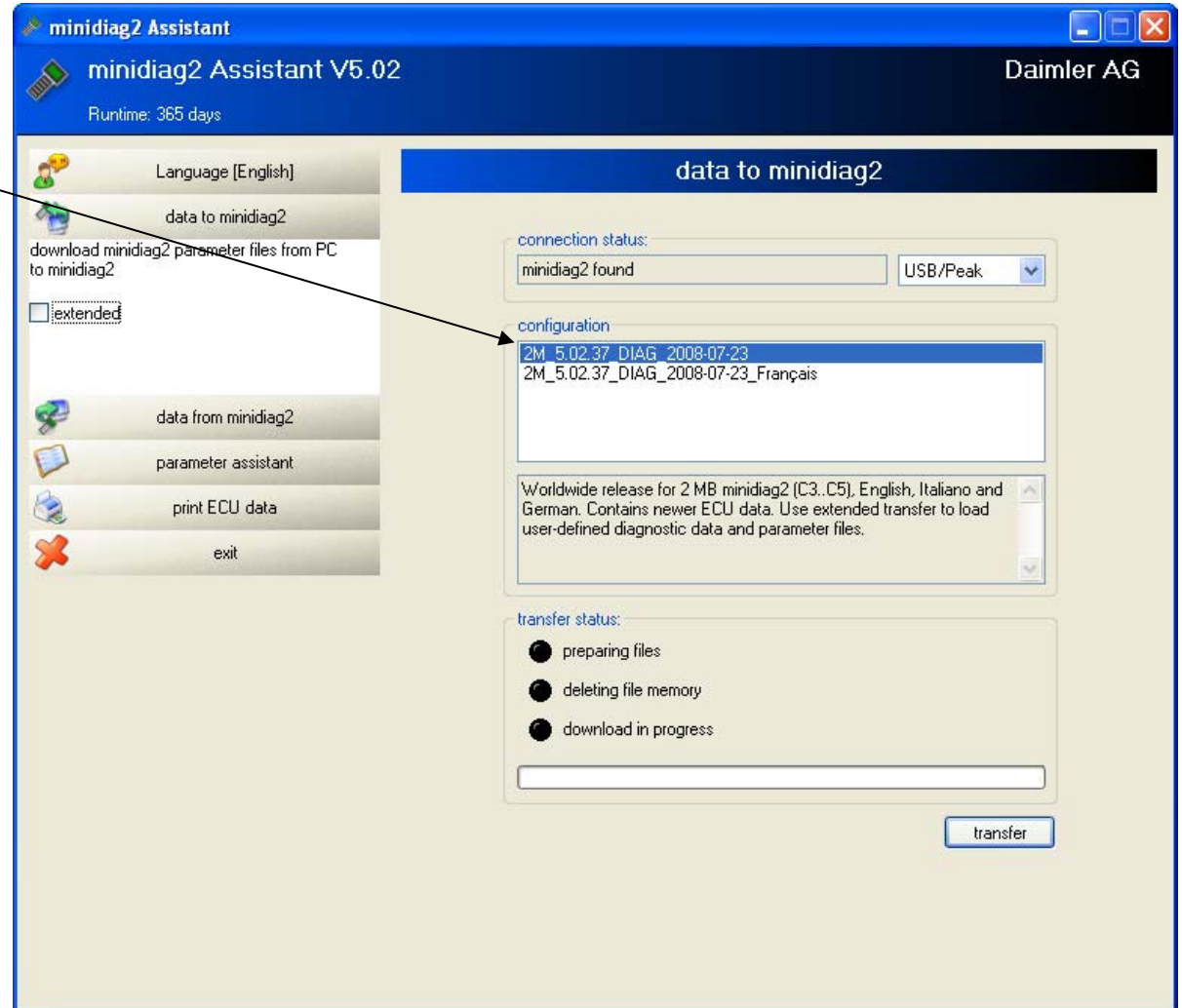
Usage of extended transfer
(page 5 and 6)

Transfer



data to minidiag2 (automatic) with old hardware C3..C5 (2MB flash)

Name of configuration for
2MB flash minidiag2
(C3..C5)



data to minidiag2 (extended)

1. page, 4 MB flash, C6

Make your own configuration for ECU data and parameter files

Save user-defined configuration

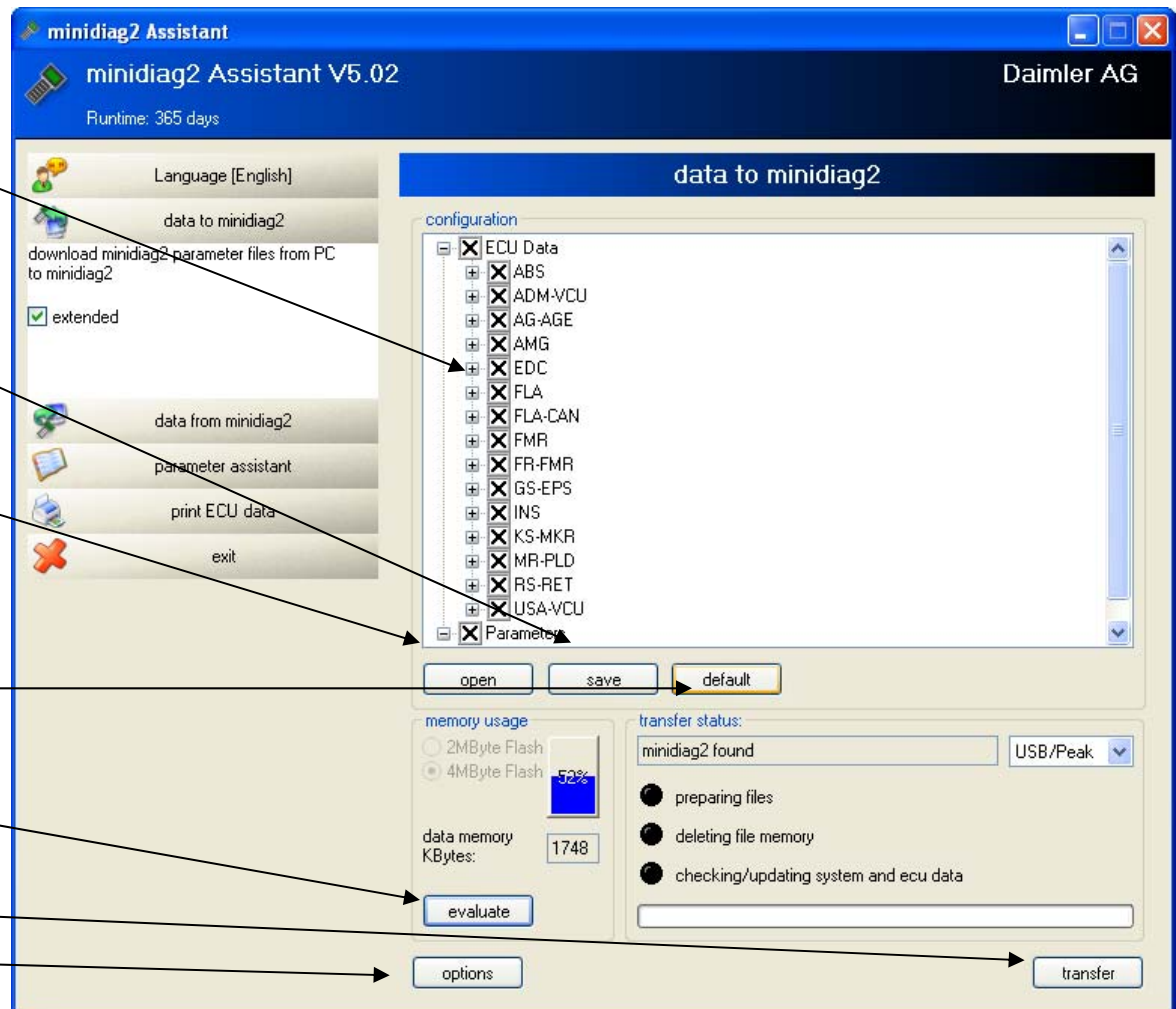
Open user-defined configuration

DEFAULT button loads the configuration selected in the data to minidiag2 (automatic) menu

Evaluate memory usage

Transfer

Options (see page 7)



data to minidiag2 (extended) 2. page, 2MB flash, C3..C5

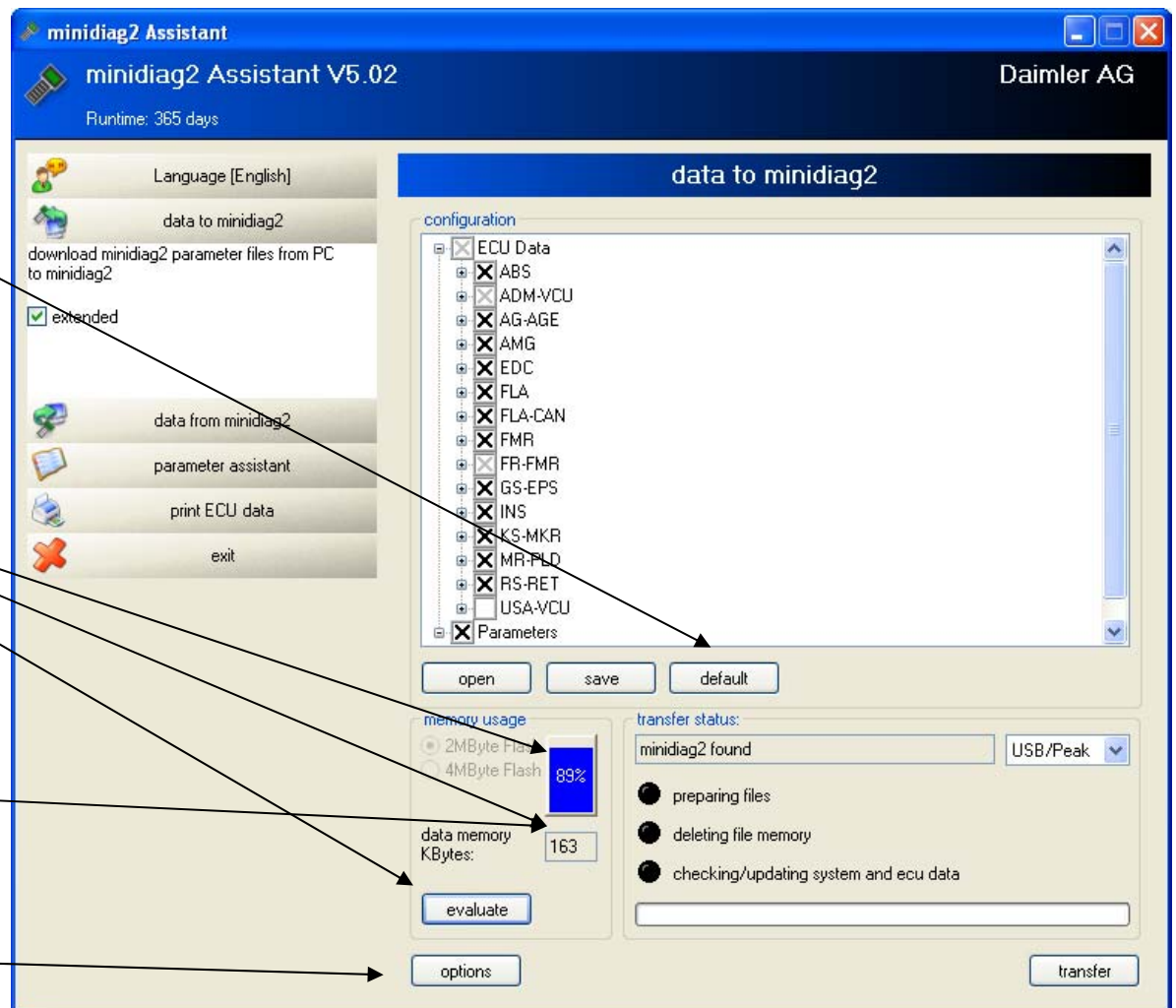
DEFAULT button loads the configuration selected in the data to minidiag2 (automatic) menu

Evaluate memory usage (clicked)

Free memory for parameter files and print data (F3)

“data memory KBytes”

Options (see page 7)

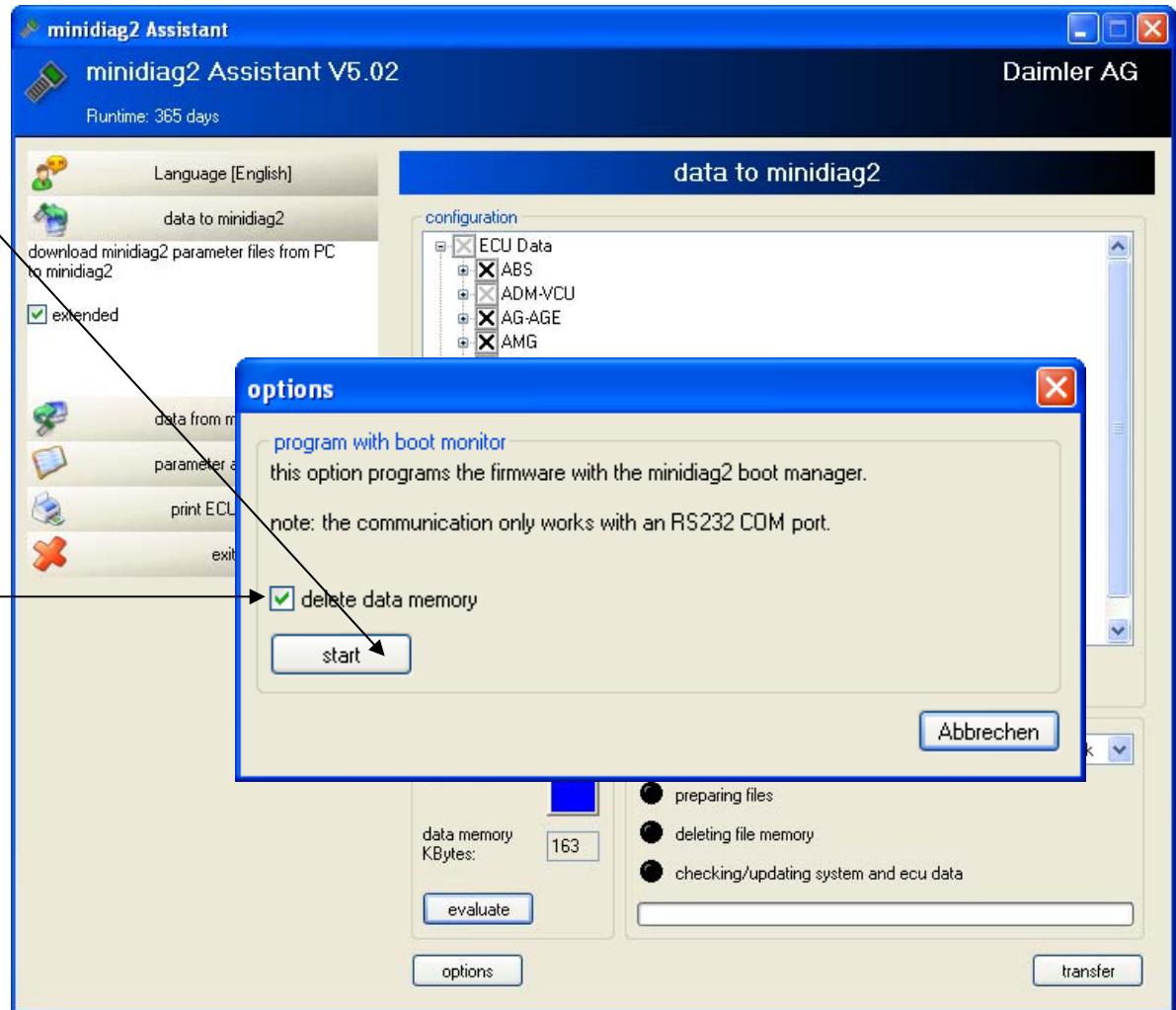


data to minidiag2 (extended) 3. page, 2MB and 4MB flash, C3..C6

options button:

“program with boot monitor” is a fallback option to restore firmware to minidiag2. Use this option only if a firmware update via the transfer button fails.

If “delete data memory” is checked, parameter sets are deleted when the firmware is being restored. (If not checked, parameter sets are not deleted.)

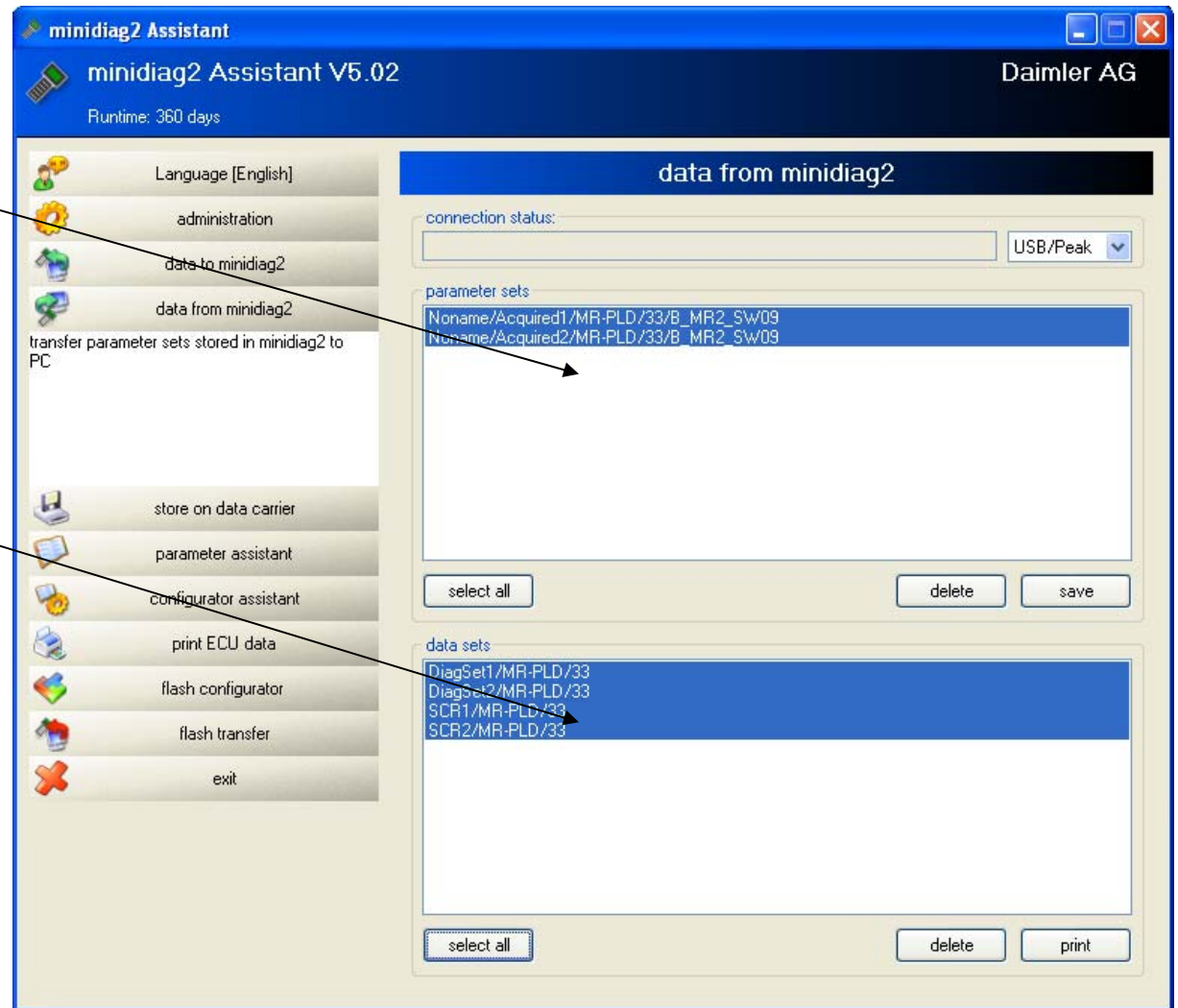


data from minidiag2

Acquired parameter sets stored in minidiag2 flash will be displayed here. Click accept to store on drive

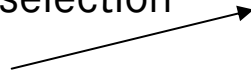
Acquired ECU data stored in minidiag2 flash (analog and binary data, error codes, system data, EHM data, minidiag2 data) will be displayed here. Click print...

Note: F3 print function is available at 6 menu locations in minidiag2 (system info, diagnosis, EHM (2x) and Flash (2x) menu of ECU)



minidiag2 Parameter Assistant

Language selection



minidiag2 Parameter Assistant [test bed/test bed release A, ADM-VCU/25/A_FR_PRUEF_25] - [parameter d...]

parameter display ?

Deutsch **English** Français Italiano

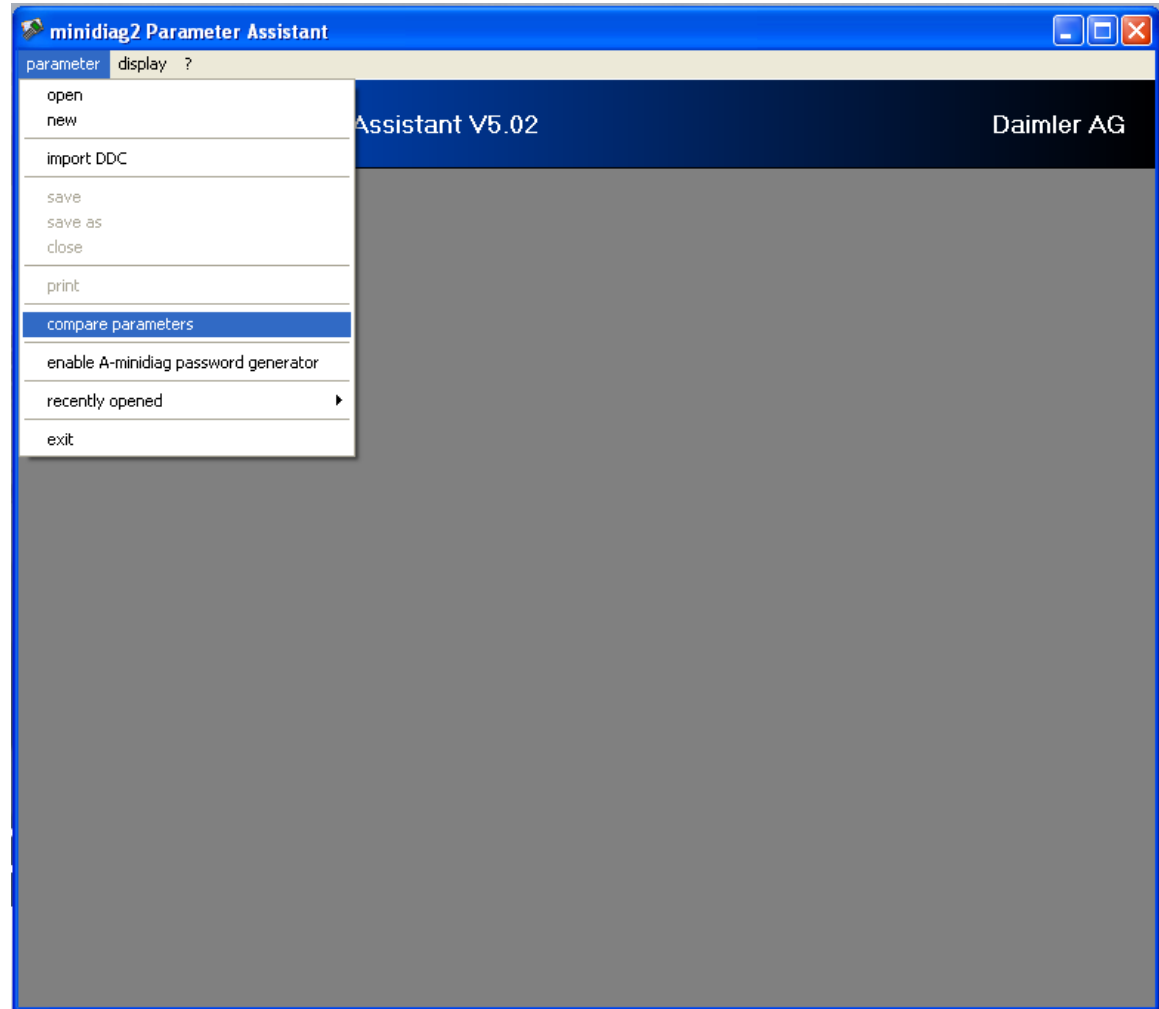
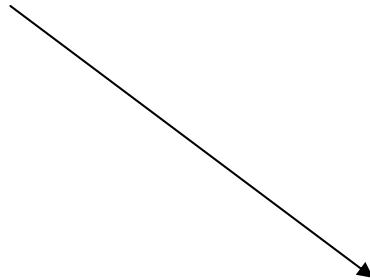
minidiag2 Parameter Assistant V5.02 Daimler AG

group: 3 limiters

nr.:	name:	actual	default:	min:	max:	dimension:
1	engine speed limitation while vehicle stop	4000	4000	0	4000	1/min
description:						
2	minimum engine speed	48	48	0	4000	1/min
description:						
3	maximum idle value	896	896	0	4000	1/min
description:						
4	maximum engine speed	4000	4000	0	4000	1/min
description:						
5	maximum vehicle speed	85	85	0	90	km/h
description:						

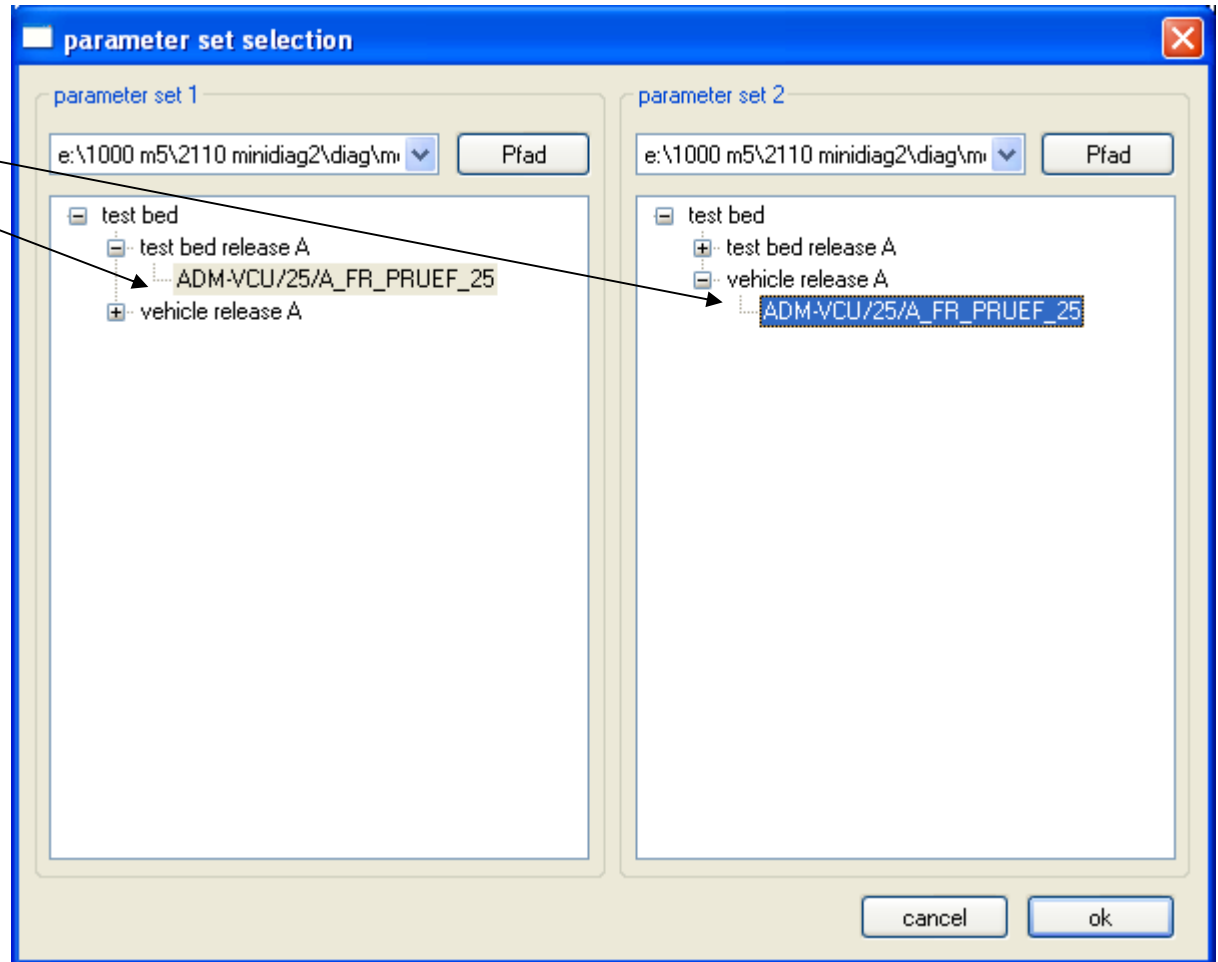
minidiag2 Parameter Assistant

Compare parameter sets



minidiag2 Parameter Assistant Compare parameter sets

Select parameter sets



minidiag2 Parameter Assistant Compare parameter sets

compare parameters

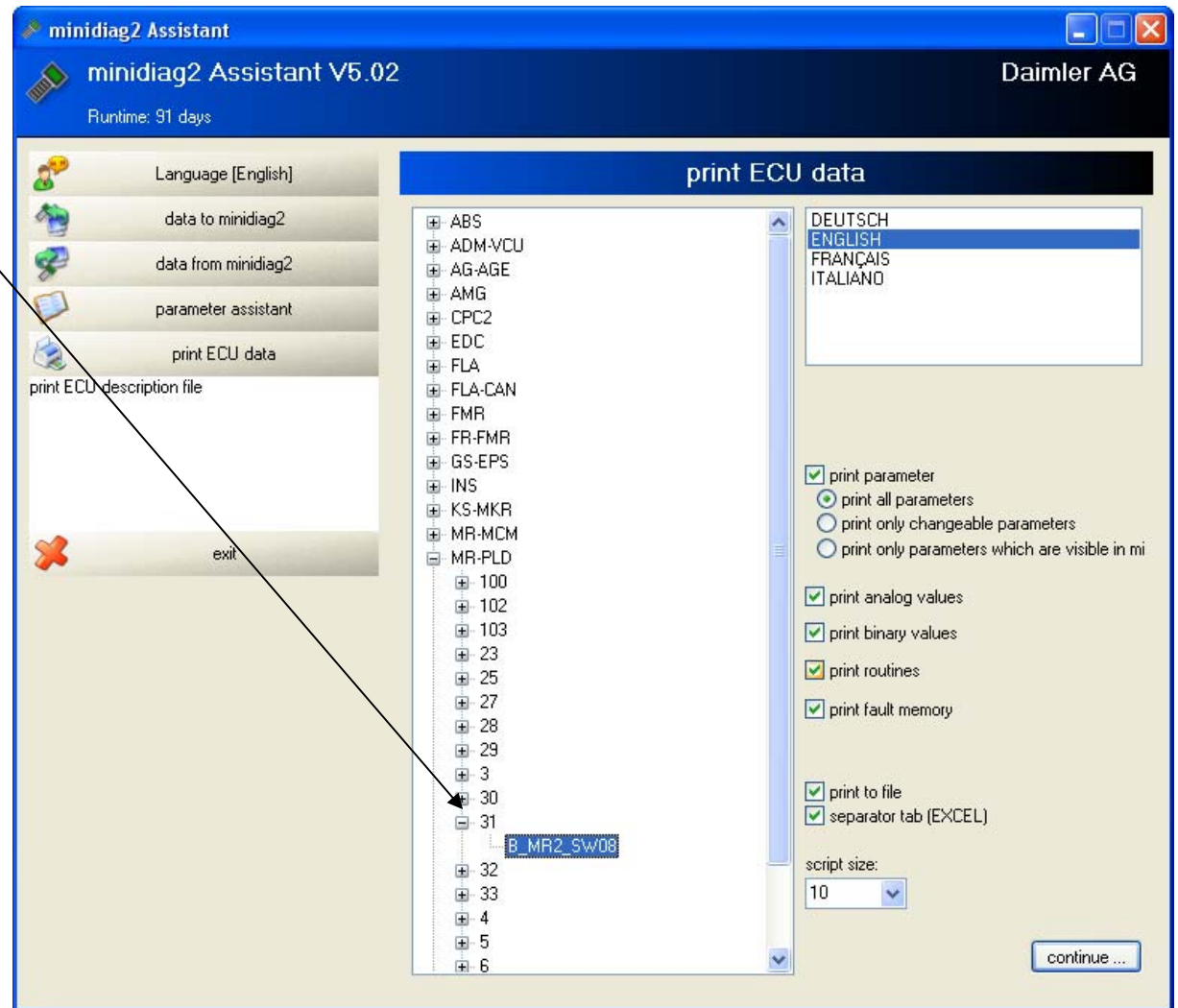
parameter set 1: test bed/test bed release A (ADM-VCU/25/A_FR_PRUEF_25) (e:\1000 m5\2110 minidiag2\diag\md2_5.02.60\md2_5.02.60_diagnostic_2010-08-12\
parameter set 2: test bed/vehicle release A (ADM-VCU/25/A_FR_PRUEF_25) (e:\1000 m5\2110 minidiag2\diag\md2_5.02.60\md2_5.02.60_diagnostic_2010-08-12\

parameter name 1	parameter data 1	parameter data 2	parameter name 2
Parameter 1/1 CAN configuration/ one wire capability engine CAN	Actual=1 Min=0 Max=1 Default=1	Actual=0 Min=0 Max=1 Default=1	Parameter 1/1 CAN configuration/ one wire capability engine CAN
Parameter 2/1 configuration driving/ engine retarder	Actual=4 Min=0 Max=4 Default=4	Actual=1 Min=0 Max=4 Default=4	Parameter 2/1 configuration driving/ engine retarder
Parameter 2/2 configuration driving/ transmission retarder	Actual=0 Min=0 Max=1 Default=0	Actual=0 Min=0 Max=1 Default=0	Parameter 2/2 configuration driving/ transmission retarder
Parameter 2/3 configuration driving/ automatic transmission	Actual=0 Min=0 Max=1 Default=0	Actual=0 Min=0 Max=1 Default=0	Parameter 2/3 configuration driving/ automatic transmission
Parameter 2/4 configuration driving/ activate tip inputs ADR +/-	Actual=1 Min=0 Max=1 Default=1	Actual=1 Min=0 Max=1 Default=1	Parameter 2/4 configuration driving/ activate tip inputs ADR +/-
Parameter 2/5 configuration driving/ accelerator pedal mounted	Actual=1 Min=0 Max=1 Default=1	Actual=1 Min=0 Max=1 Default=1	Parameter 2/5 configuration driving/ accelerator pedal mounted
Parameter 2/6	Actual=0	Actual=0	Parameter 2/6

show all parameters
 show changeable parameters
 show parameters which are visible in minidiag2

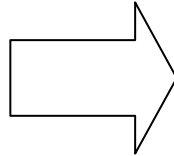
print ECU data

Select ECU, print to file or printer



useful things ...

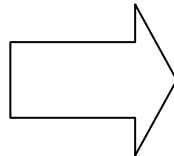
Connection to minidiag2



If **RS232/COM1** and **USB/Peak** are both connected, minidiag2 is switched automatically to CAN transfer. If only USB/Peak is connected, enter "**3 CAN connection**" for CAN transfer

New search list, press e.g.

02 for PLD/MR2

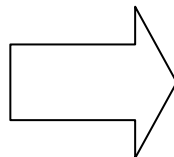


01 KWP2000
02 K-Line: PLD/MR2
03 K-Line: ADMx
04 J1939:
 ADM3+PLD/MR2

...

11 Free running

Check amount of **free memory** before use of the print function for data (F3) and parameter sets



1 minidiag2 info OK
2 sw/hw version OK
 scroll down - **free memory** in KBytes

equipment

New standard equipment delivered with C6 package
(Nr. 3490. 2200. 01)



Nr. 3490. 2100. 00	Main power unit	EUR 25	(plus 19% VAT.)
Nr. 3490. 2200. 00	PC connecting cables (RS232)	EUR 20	(plus 19% VAT.)
<u>Nr. 3490. 2200. 01</u>	<u>PC connecting cables (USB-CAN + RS232)</u>	<u>EUR 245</u>	<u>(plus 19% VAT.)</u>
Nr. 3490. 2300. 00	Diagnosis cable (14-pin)	EUR 25	(plus 19% VAT.)
Nr. 3490. 2700. 00	Diagnosis cable (OBD II, 16-pin)	EUR 176	(plus 19% VAT.)
Nr. 3490. 3200. 00	Operating Manual German	EUR 10	(plus 19% VAT.)
Nr. 3490. 3200. 02	Operating Manual English	EUR 10	(plus 19% VAT.)
Nr. 3490. 3200. 03	Operating Manual French	EUR 10	(plus 19% VAT.)
Nr. 3490. 3200. 04	Operating Manual Spanish	EUR 10	(plus 19% VAT.)
Nr. 3490. 3200. 06	Operating Manual Italian	EUR 10	(plus 19% VAT.)
Nr. 3490. 2600. 00	USB-RS232 interface converter	EUR 68	(plus 19% VAT.)