



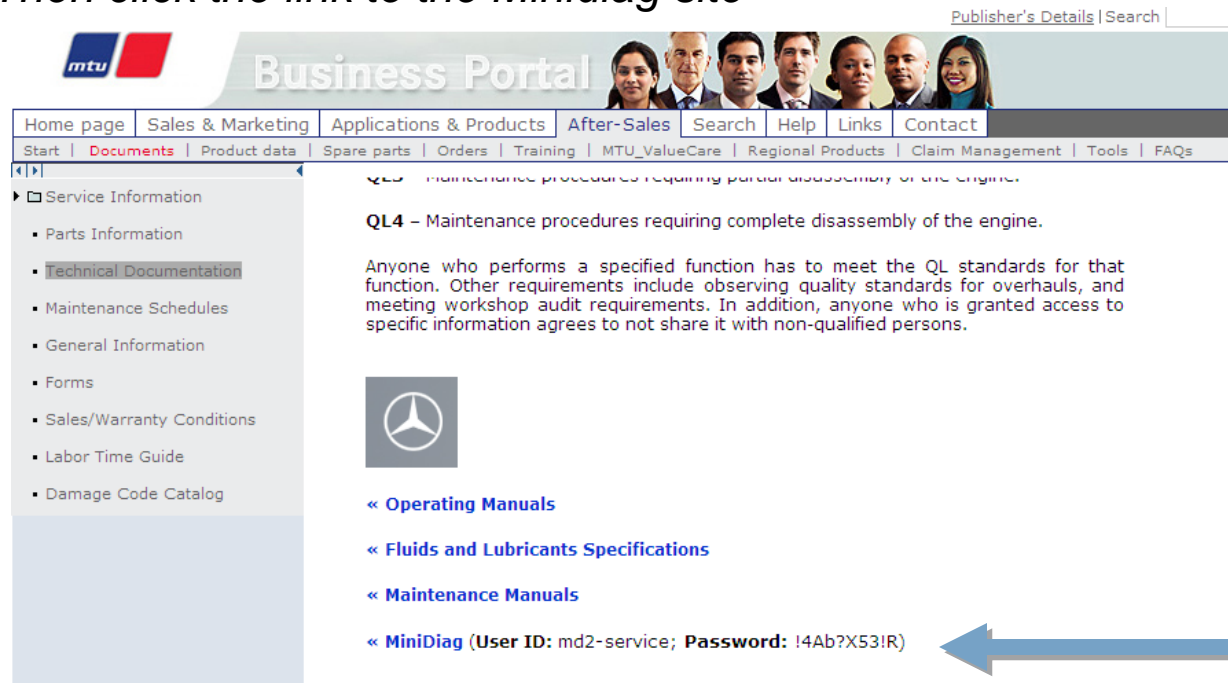
Updating the minidiag 2

December 22, 2010



Downloading Software

- Go to the Business Portal to the following section to retrieve the software
 - *Home – After-Sales – Documents – Technical Documentation – Minidiag.*
Then click the link to the Minidiag site



The screenshot shows the MTU Business Portal website. The MTU logo is in the top left. The main header features the text "Business Portal" and a row of seven diverse people. Below the header is a navigation bar with links: Home page, Sales & Marketing, Applications & Products, After-Sales, Search, Help, Links, and Contact. A secondary navigation bar includes: Start, Documents, Product data, Spare parts, Orders, Training, MTU_ValueCare, Regional Products, Claim Management, Tools, and FAQs. A left sidebar menu is expanded to show "Technical Documentation" under "Service Information". The main content area displays "QL4 – Maintenance procedures requiring complete disassembly of the engine." Below this is a Mercedes-Benz logo and a list of links: « Operating Manuals, « Fluids and Lubricants Specifications, « Maintenance Manuals, and « MiniDiag (User ID: md2-service; Password: !4Ab?X53!R). A large blue arrow points to the MiniDiag link.

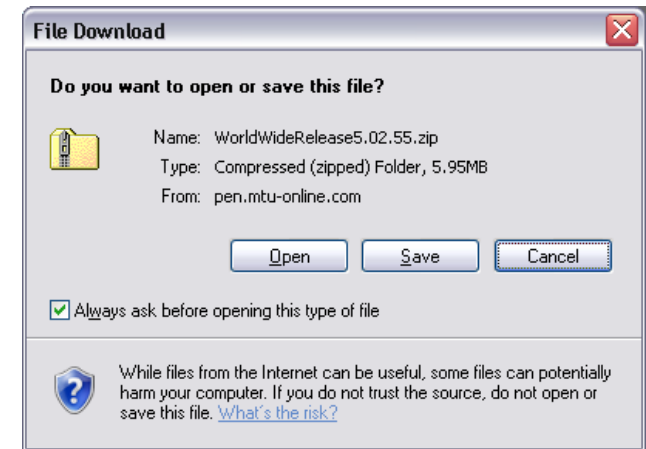
Downloading Software

- Log into the minidiag site using the ID and password provided.
 - Click “World Wide Release”
 - Save the file that pops up and extract once saved to the PC




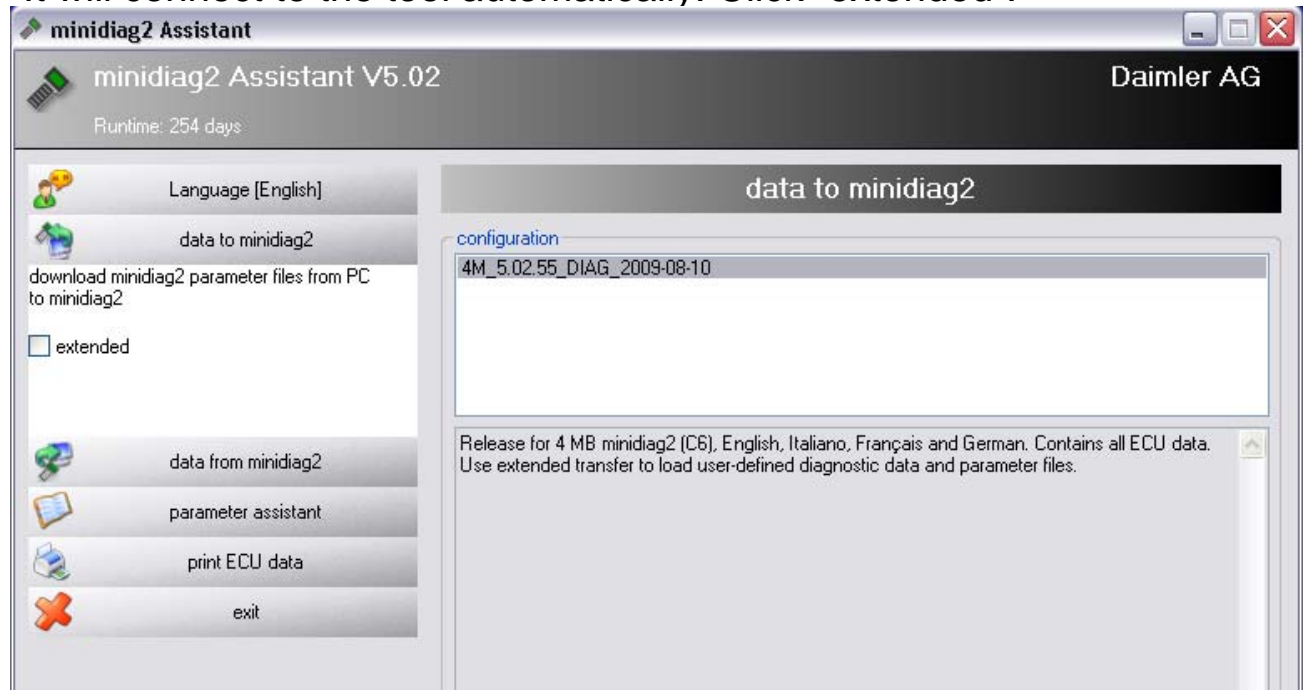
Download

World Wide Release	(Zip-File) New, July 2009
Bedienungsanleitung	(deutsch, PDF-File)
User manual	(english, PDF-File)
Manual de instrucciones	(spanish, PDF-File)
Mode d'emploi	(france, PDF-File)
Istruzione d'uso	(italic, PDF-File)
Manual Software functions	(english, PDF-File)
Flyer	(deutsch/english, PDF-File)



Connecting minidiag

- Once the software is installed, connect your minidiag to your computer using the cables provided with the tool. Open the  icon.
- Select “Data to Minidiag” It will connect to the tool automatically. Click “extended”.

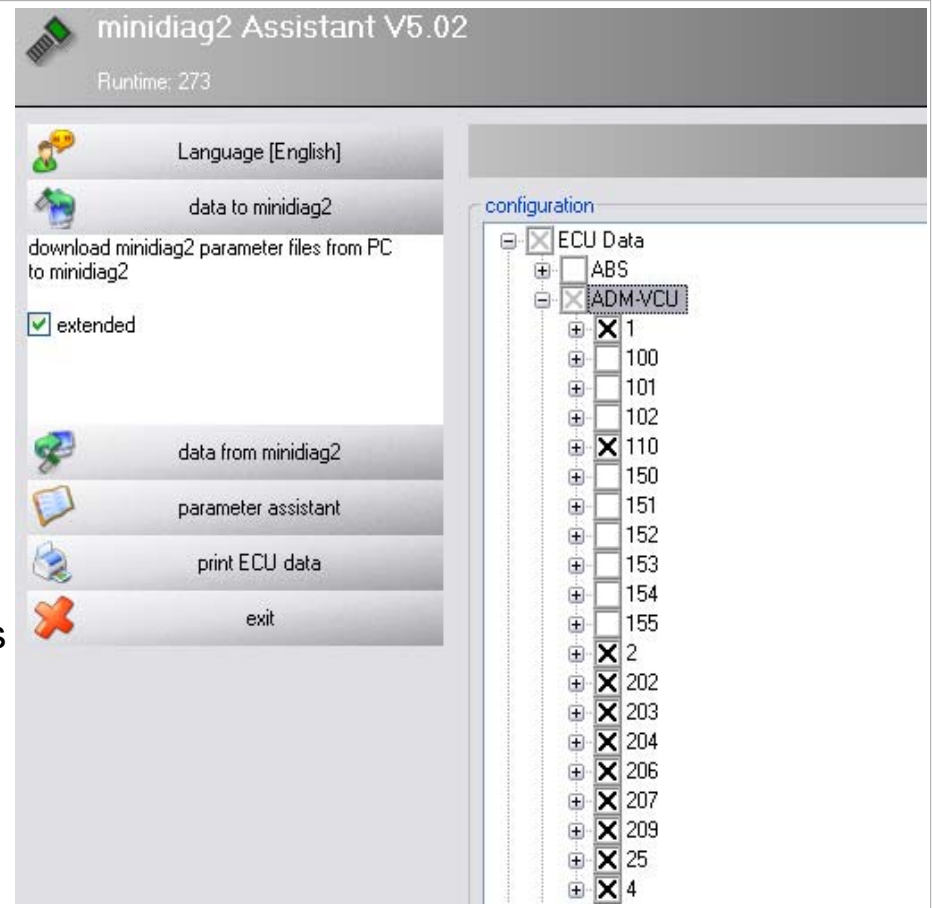


CAN Connection

- If you have the latest (C6) version tool, you can connect using the USB/Peak connecton. If you do use this, the process is the same but you must change your Com setting to USB/Peak and then select “CAN communication” on the minidiag screen.

Selecting Modules

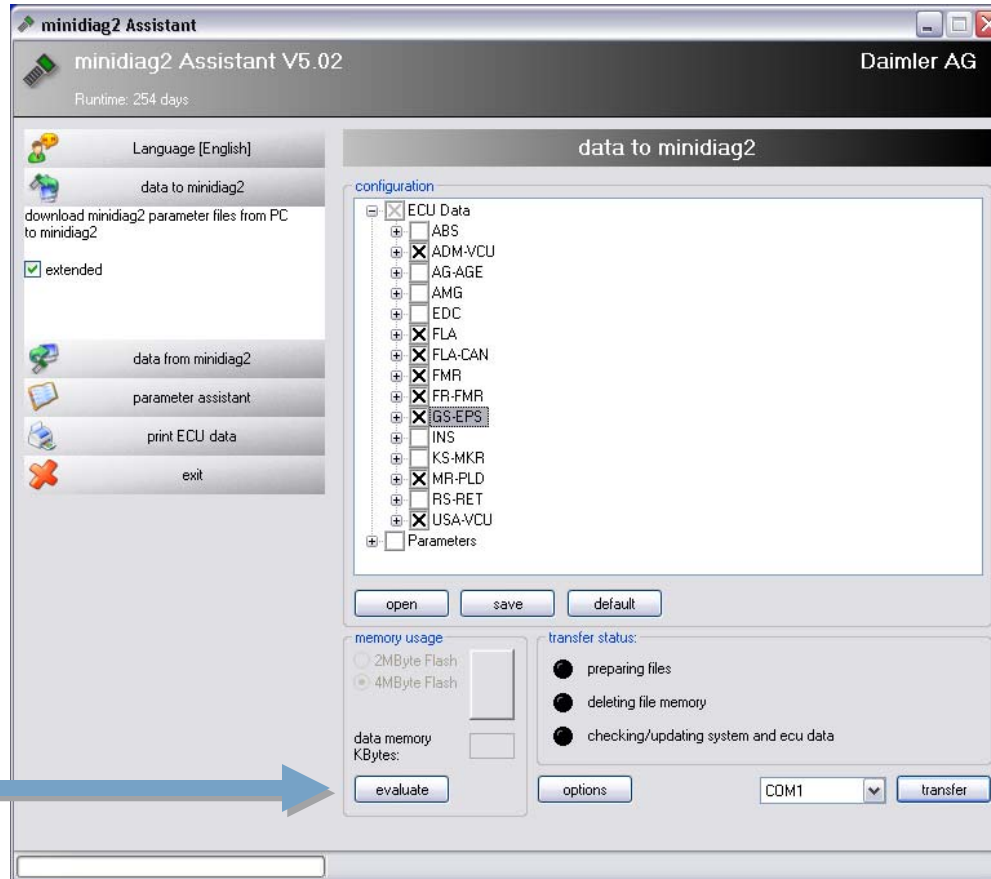
- In this screen, you will select the types of control modules you will communicate with. If you do not have the latest 4MB tool (C6 identified on the back of the minidiag) you will not be able to fit the programming for all of the modules on your tool.
- If you have a 2MB tool (C3, C4, C5), you will want to select the most common boxes you communicate with (generally MR-PLD, ADM-VCU, FLA). With this latest version software, you will not be able to fit all diagnosis versions of the ADM/VCU on with the MR-PLD. In this case, you will need to expand the ADM/VCU tab (see right) and de-select diagnosis versions 100,101,102, and 150-155 as these are all VCU modules not used off highway.
- Press “Evaluate” after selecting to verify this will fit.



Selecting Modules

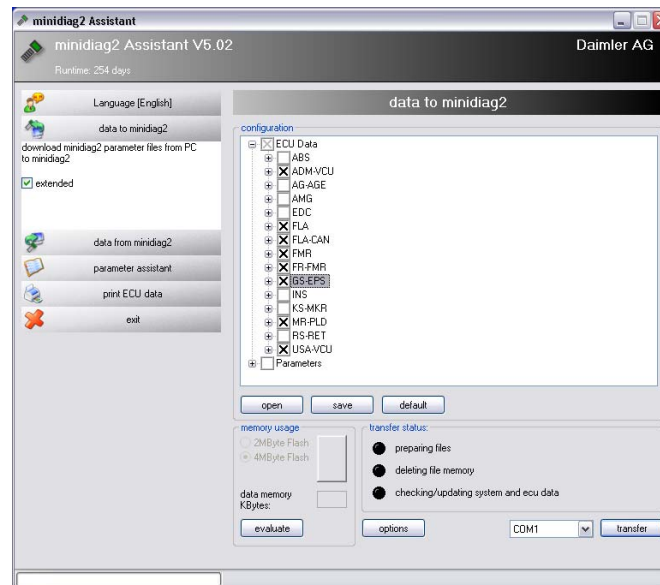
- ADM-VCU is used to communicate with ADM modules
- MR-PLD is used to communicate with MR2 and PLD modules
- FLA and FLA-CAN is used to communicate with Flame Start modules
- FMR and FR-FMR are used to communicate with FR and FMR modules (boxes previous to ADMs, commonly found on older units and Grove Cranes).
- GS-EPS is used for Mercedes gear boxes

Selecting Modules



Sending to minidiag

- Once all of the modules are selected, you will press “transfer”. Once complete, it will tell you that data was transferred successfully. NOTE: When you update the tool, you will lose all saved data on the minidiag including parameter sets. You must save them to the computer before updating.





If you have questions, you can contact Scott Hanson at [scott.hanson @mtu-online.com](mailto:scott.hanson@mtu-online.com)

