

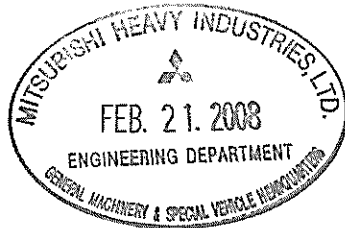
SPECIFICATIONS

MITSUBISHI HIGH SPEED DIESEL ENGINE
MODEL MITSUBISHI S4S-Y365DG

EPA EMISSION CONTROL ENGINE (INTERIM TIER4)

(MENA: For Generator)

APPLICATION
FOR APPROVAL



DATE July.10.2007

MITSUBISHI HEAVY INDUSTRIES, LTD.

P	搭産E
P	E保
P	小E作
P	MENA
1	控
1	計

CHG	DATE	APPROVED	CHECKED	DRAWN
△	Feb.18.2008	<i>S. Kurokawa</i>	<i>G. Matsumaru</i> <i>S. Serawaki</i>	A.Kurosawa
△	Aug.23.2007		<i>T. Fujisawa</i>	

1. Principal Particulars of Diesel Engine

Standard	All items, unless otherwise specified, are in accordance with JIS and maker's standards
Model	Mitsubishi S4S (MHI No. 32A00-13420)
Type	4 cycle water-cooled, vertical overhead valve, cylinder in line, swirl chamber type
Number of cylinders	4
Bore × Stroke	94mm × 120mm
Piston displacement	3.331 liters
Compression ratio	22:1
Rotation	Anti-Clockwise rotation as viewed from flywheel side
Firing order	1-3-4-2
Output(SAE J1349, With Out Fan) △	St-by ; 46.4 HP / 1800 rpm Prime ; 44.0 HP / 1800 rpm
Engine weight(Dry)	Approx. 245kgf
Dimensions(Length)	Approx. 781mm
(Width)	Approx. 593mm
(Height)	Approx. 710mm
Fuel	ASTM diesel fuel oil No.2-D(JIS K2204 gas oil specification No.2 or 3)
Lubricating oil	API classification service CD,CF-4 class

Fuel consumption	Approx. 195g/HP-h at standard air conditions
Oil consumption	Within 2.0g/HP-h
Fuel injection timing	19°BTDC
Idling engine speed	850±20rpm
Speed regulation	Steady state speed regulation at rated speed, within 5.5%
Mean effective pressure	0.69MPa(7.1kgf/cm ²)
Piston speed	7.2m/s at 1800rpm
Fuel injection pump	In-Line type
Fuel injection nozzle	Throttle type
Fuel filter	Filtering paper type
Lubricating system	Forced lubrication by trochoid gear pump
Lubricating oil filter	Filtering paper type, full flow
Oil pressure	0.19-0.39MPa(2-4kgf/cm ²) at duty run 0.1MPa(1.0kgf/cm ²) min. at low idling
Oil capacity	10 liters (Oil pan 9 liters, high level, Oil filter etc. 1 liter)
Cooling system	Forced circulation of fresh water by centrifugal pump with thermostat
Engine water capacity	Approx. 5.5 liters

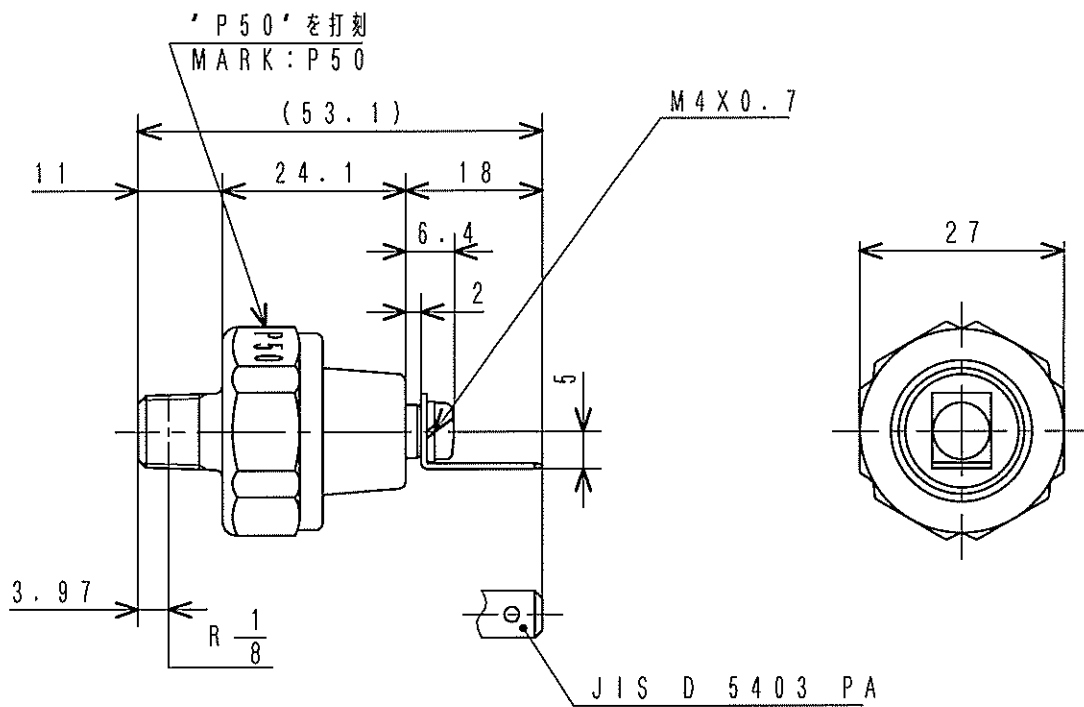
Alternator		12V - 50A
Voltage regulator		IC type (Built in alternator)
Starting system		Electric starting, Starting moter 12V-2.2kW, With heater plugs 10.5V-9.7AX4
Allowable Exhaust Pressure	Back	Max.6.7kPa(50mm mercury)
Allowable Resistance	Air Intake	Max 1.96kPa(Max.200mm water) (Initial stage)
Engine color		Clear lacquer

<Remarks>

- ①with Fan (φ440 Pusher, pulley ratio 1.3)
- ②with Switch,Thermo (MC880-900 ... 1)
- ③with Switch,Oil Press. (31A90-00700 ... 1)

2. Accessories (Loose Supply)

	Parts Name	Parts No.	Q'ty	Remarks
1	SWITCH,OIL PRESSURE	31A90-00700	1	Attached To Engine
2	SWITCH,THERMO	MC880-900	1	
3	STOP SOLENOID(ETR)	32A87-06060	1	



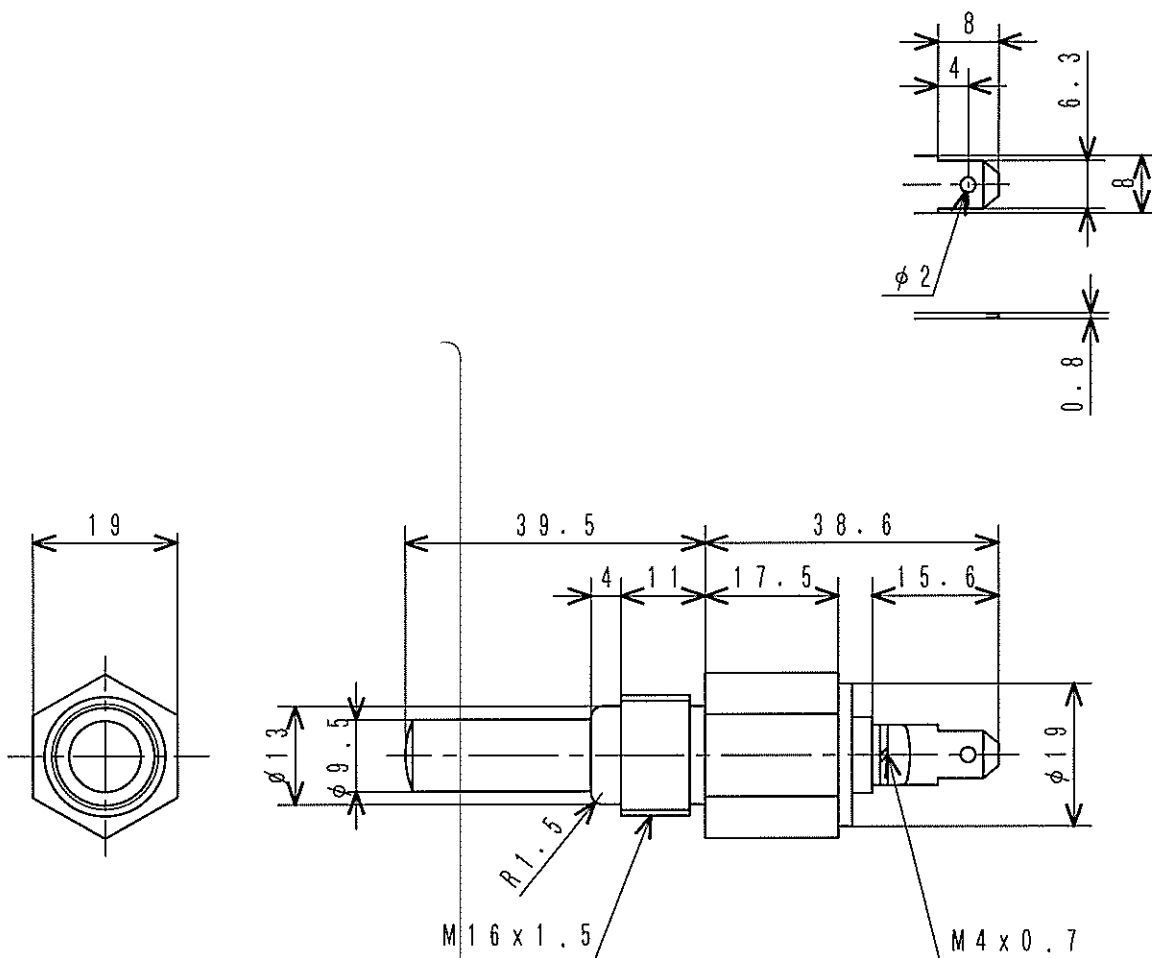
仕 様
SPECIFICATIONS

作 動 圧 力 OPERATING PRESS.	49 kPa { 0.5 kgf/cm ² }
作 動 電 圧 OPERATING VOLT.	12 V - 5 W 24 V - 3 W
結 線 様 式 CONNECTION	b (— ○ —)

油圧スイッチ

SWITCH, OIL PRESSURE

31A90-00700



部品番号 PART No.	作動温度 OPERATING TEMP.		
MC880-900	温度下降時 DECREASE	$\leq 100^{\circ}\text{C} \pm 4^{\circ}\text{C}$	で接点開 OPEN
	温度上昇時 RISE	$\geq 100^{\circ}\text{C} \pm 2^{\circ}\text{C}$	で接点閉 CLOSE
MC880-901	温度下降時 DECREASE	$\leq 105^{\circ}\text{C} \pm 4^{\circ}\text{C}$	で接点開 OPEN
	温度上昇時 RISE	$\geq 105^{\circ}\text{C} \pm 2^{\circ}\text{C}$	で接点閉 CLOSE

定格負荷 RATED LOADED	1A以上 MIN.	0.5A以上 MIN.
定格電圧 RATED VOLT.	12V	24V

サーモスイッチ
SWITCH, THERMO

MC880-900
MC880-901

