



# Illustrated Parts List

**MODEL**  
**040315-0**

Not for  
Reproduction

**7000 Watt**  
**Home Generator System**

Not for  
Reproduction

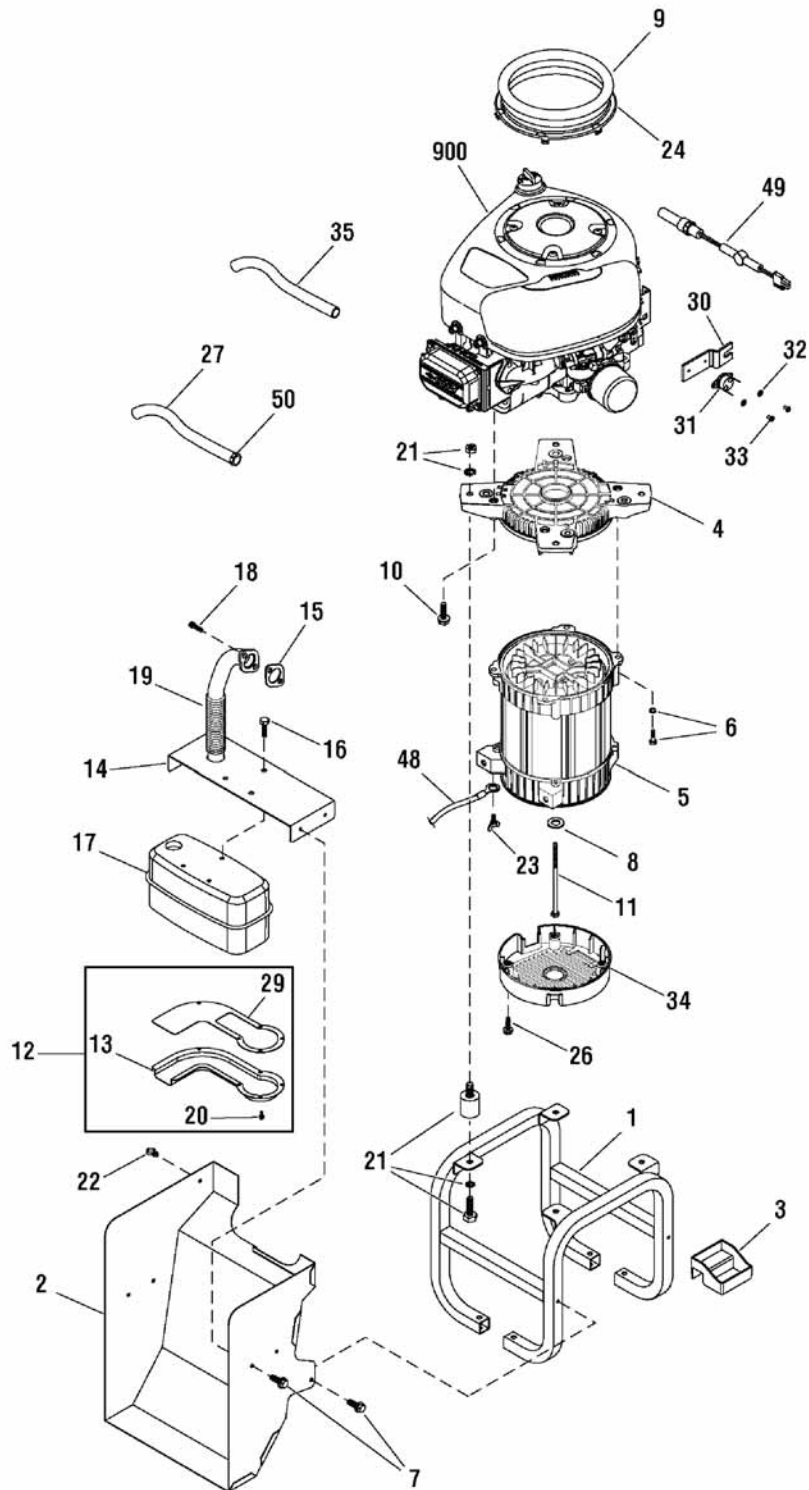
<b>PRODUCT COMPONENTS</b>	<b>PAGES</b>
Main Unit .....	4
Alternator .....	6
Control Panel .....	7
Enclosure .....	9
Torque Specification Chart .....	Inside Back Cover

Not for  
Reproduction

## Exploded View - Main Unit

NOTE: Unless noted otherwise, use the standard hardware torque specification chart.

0002.t



The above parts group applies to the following Mfg. Nos.:

040315-0 - 7,000 Watt Home Generator System

## Parts List - Main Unit

Ref.	Part No.	Description	Ref.	Part No.	Description
1	B191860GS	CRADLE			
2	194568GS	DUCT			
3	193536GS	TRAY, Oil Drain			
4	191793GS	ADAPTER, Engine			
5	-----	ALTERNATOR ASSEMBLY			
6	194728GS	KIT, Hardware Adapter			
7	B4300GS	BOLT			
8	96796GS	WASHER			
9	208103GS	SEAL			
10	2830598SM	TAPTITE			
11	187365HGS	CAPSCREW, Hex head, 5/16-24 x 9.84			
12	207270GS	DEFLECTOR, Muffler			
13	193475GS	DEFLECTOR			
14	206856GS	BRACKET, Muffler			
15	692236	GASKET			
16	83512GS	TAPTITE			
17	207059GS	MUFFLER			
18	698941	SCREW			
19	194159GS	PIPE, Exhaust			
20	195008GS	KIT, Hardware Deflector			
21	194209GS	KIT, Vibration Mount			
22	192940GS	CLIP			
23	86494GS	SCREW			
24	192853GS	COLLAR, Air Inlet			
26	74908GS	TAPTITE			
27	206817GS	HOSE, Fuel			
29	194221GS	ARRESTOR, Spark			
30	206047GS	PLATE, Temp Switch			
31	206045GS	SWITCH			
32	27772GS	WASHER			
33	-----	* SCREW, Phillips Head, 4-40 x 1/4			

### Footnotes:

\* - Items without part numbers are common fasteners and are available at your local hardware store.

\*\* Contact Engine Manufacturer

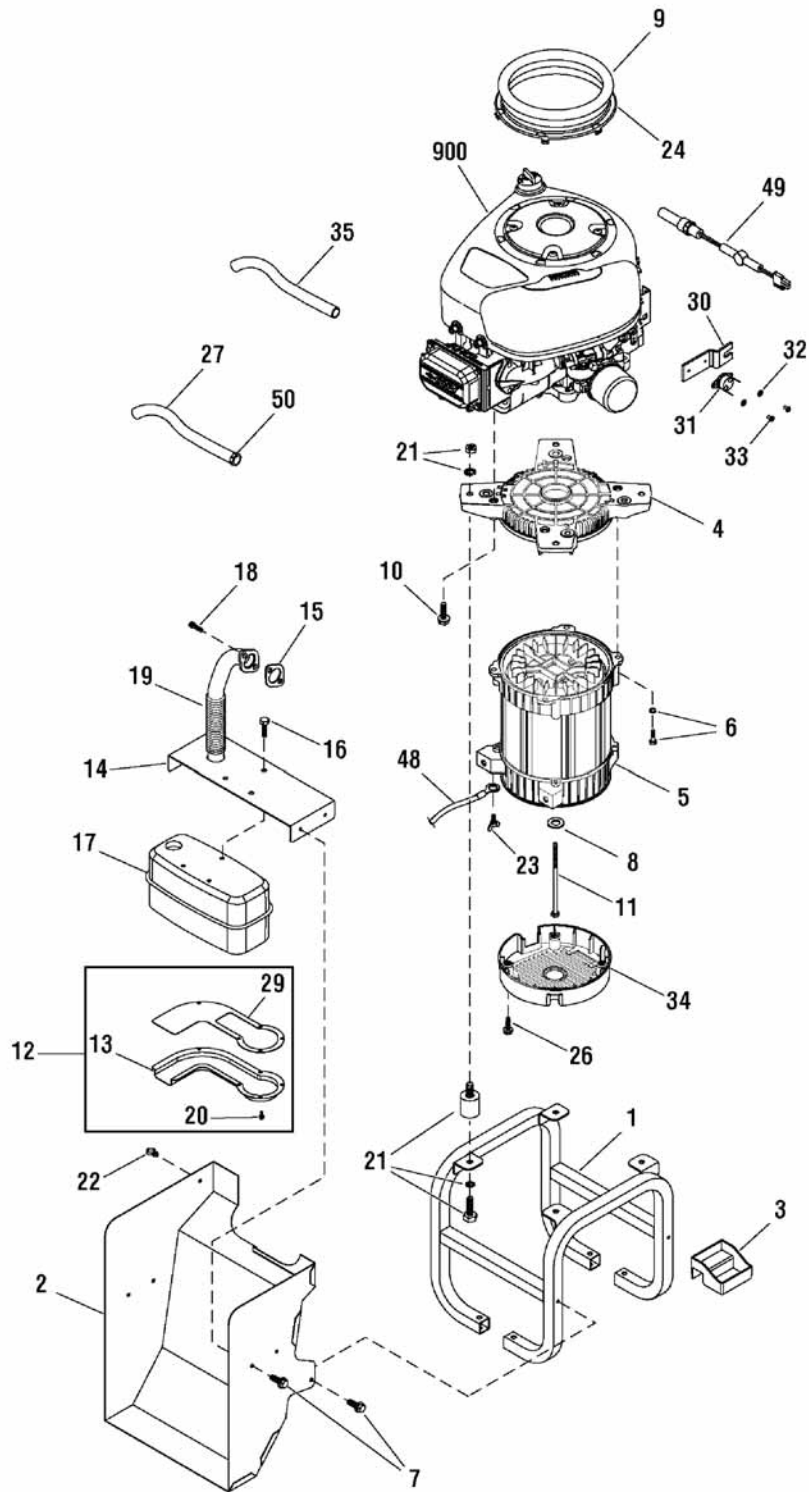
**The above parts group applies to the following Mfg. Nos.:**

040315-0 - 7,000 Watt Home Generator System

## Exploded View - Main Unit

NOTE: Unless noted otherwise, use the standard hardware torque specification chart.

0002.t



The above parts group applies to the following Mfg. Nos.:

040315-0 - 7,000 Watt Home Generator System

## Parts List - Main Unit

Ref.	Part No.	Description	Ref.	Part No.	Description
34	192906GS	COVER, Rear Bearing			
35	1723165SM	HOSE, Oil Drain			
48	15253621GS	WIRE			
49	01916	WARMER, Oil			
50	57822GS	CLAMP			
900	-----	** ENGINE			
--	207985GS	MANUAL, Operator's (Not Illustrated)			
--	209431GS	MANUAL, Install (Not Illustrated)			
--	277766TRI	MANUAL, Engine (Not Illustrated)			
--	208193GS	KIT, Manual ACC (Not Illustrated)			
--	202295GS	FLEX HOSE (Not Illustrated)			
--	198811GS	PAINT, Touch-Up, Silver (Not Illustrated)			
--	207337GS	KIT, LED Remote (Not Illustrated)			
--	790263	FILTER, Cartridge (Not Illustrated)			
--	492392B	FILTER, Oil (Not Illustrated)			
--	195069GS	KIT, LP Conversion (Not Illustrated)			
--	196731BGS	BIT, Screw (Not Illustrated)			
--	01915	WARMER, Battery (Optional Accessory)			
--	6034	KIT, Maintenance (Optional Accessory)			
--	199475GS	PAINT, Spray Silver (Optional Accessory)			

Not for  
Reproduction

### Footnotes:

\* - Items without part numbers are common fasteners and are available at your local hardware store.

\*\* Contact Engine Manufacturer

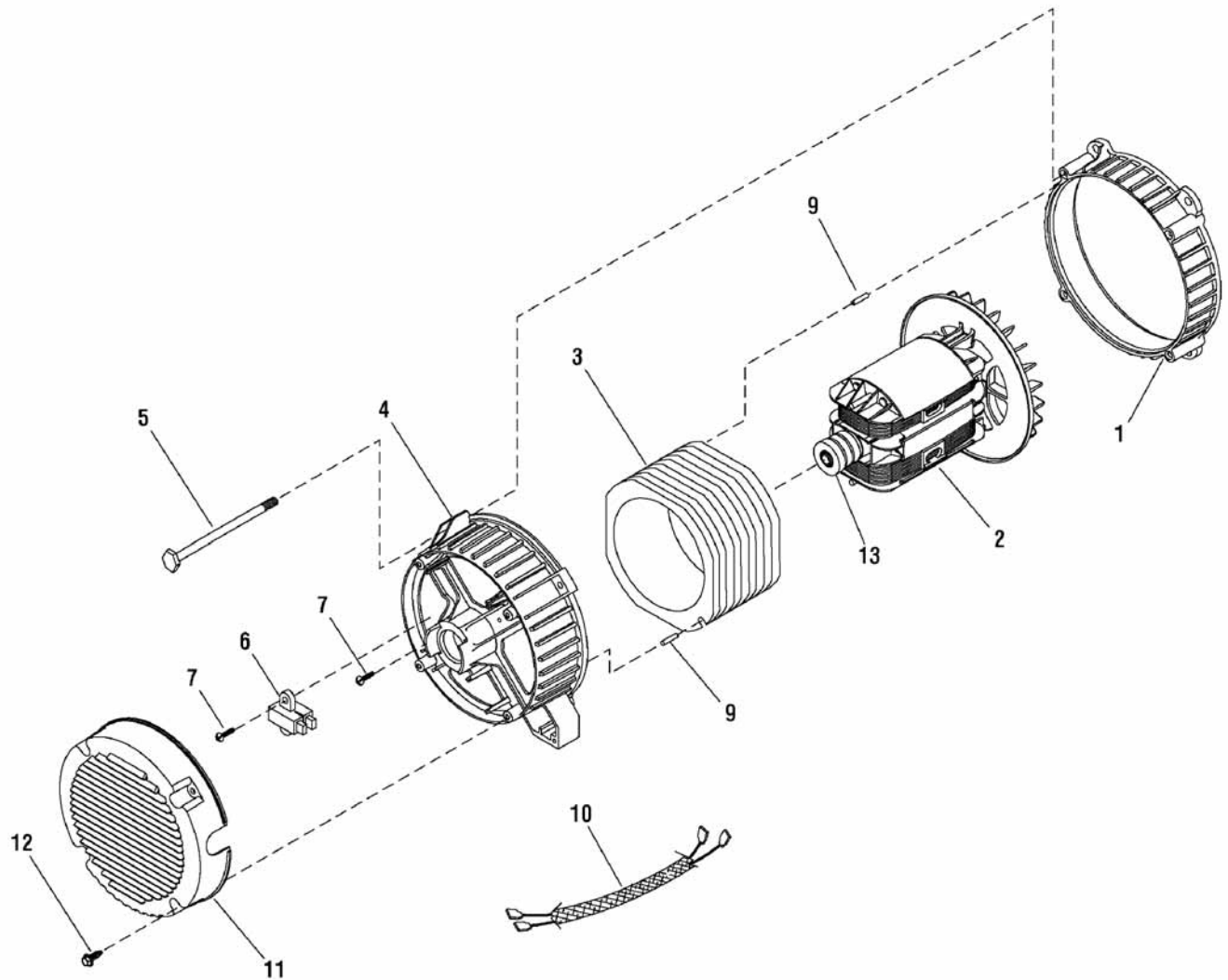
### The above parts group applies to the following Mfg. Nos.:

040315-0 - 7,000 Watt Home Generator System

## Exploded View - Alternator

NOTE: Unless noted otherwise, use the standard hardware torque specification chart.

206480



The above parts group applies to the following Mfg. Nos.:

040315-0 - 7,000 Watt Home Generator System

## Parts List - Alternator

Ref.	Part No.	Description	Ref.	Part No.	Description
1	209599GS	ADAPTER, Alternator			
2	195430GS	ROTOR			
3	206542GS	STATOR			
4	193336GS	RBC (with O-Ring p/n 189197GS)			
5	86308BGS	BOLT			
6	66386GS	BRUSH ASSEMBLY			
7	66849GS	TAPTITE			
9	81917GS	PIN			
10	193472GS	HARNESS, Wiring			
11	192906GS	COVER, Rear Bearing			
12	74908GS	TAPTITE			
13	65791GS	BEARING			

Not for  
Reproduction

### Footnotes:

---

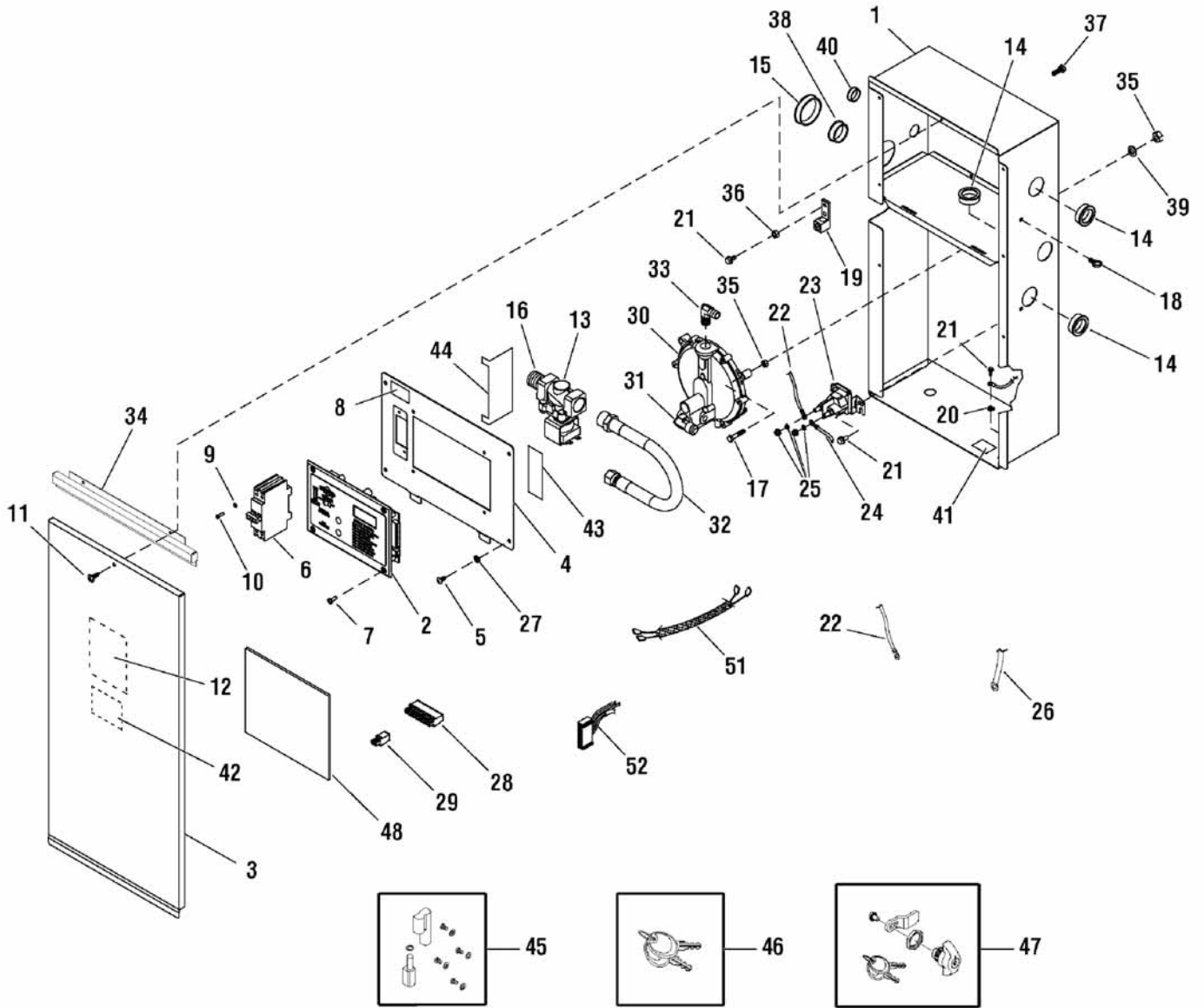
The above parts group applies to the following Mfg. Nos.:

040315-0 - 7,000 Watt Home Generator System

# Exploded View - Control Panel

NOTE: Unless noted otherwise, use the standard hardware torque specification chart.

208189



The above parts group applies to the following Mfg. Nos.:

040315-0 - 7,000 Watt Home Generator System

## Parts List - Control Panel

Ref.	Part No.	Description	Ref.	Part No.	Description
1	207903GS	BOX, Control Panel			
2	207176GS	BOARD, Circuit			
3	T207012GS	PANEL, Access			
4	T201825GS	PANEL, Control			
5	192445GS	SCREW			
6	208789GS	BREAKER, Circuit, 30A			
7	205947GS	SCREW			
8	205394GS	DECAL			
9	----	* WASHER, Shakeproof, #6			
10	----	* SCREW, Phillips Head, #6-32 x 3/8			
11	----	* SCREW, #10 x 5/8			
12	205397GS	DECAL			
13	194683GS	SOLENOID, Gas Fuel			
14	186173GS	BUSHING, Snap			
15	203015GS	BUSHING, Snap			
16	192449GS	FITTING			
17	* (38750)	HHCS-M6-1.0 x 30			
18	192940GS	CLIP			
19	199011GS	LUG			
20	----	* WASHER, Shakeproof, EXT, M6-1/4			
21	B4300GS	BOLT			
22	193171GS	CABLE, Battery, Red			
--	206609GS	DECAL			
23	691656	CONTACTOR, Starter			
24	194659GS	WIRE			
25	194251GS	KIT, Hardware			
26	188573AGS	CABLE, Battery, Black			
--	206609GS	DECAL			
27	----	* WASHER, Shakeproof, EXT #10			
28	205992GS	CONNECTOR, 10 Pin			
29	205991GS	CONNECTOR, 2 Pin			

### Footnotes:

\* Items without part numbers are common fasteners and are available at your local hardware store.

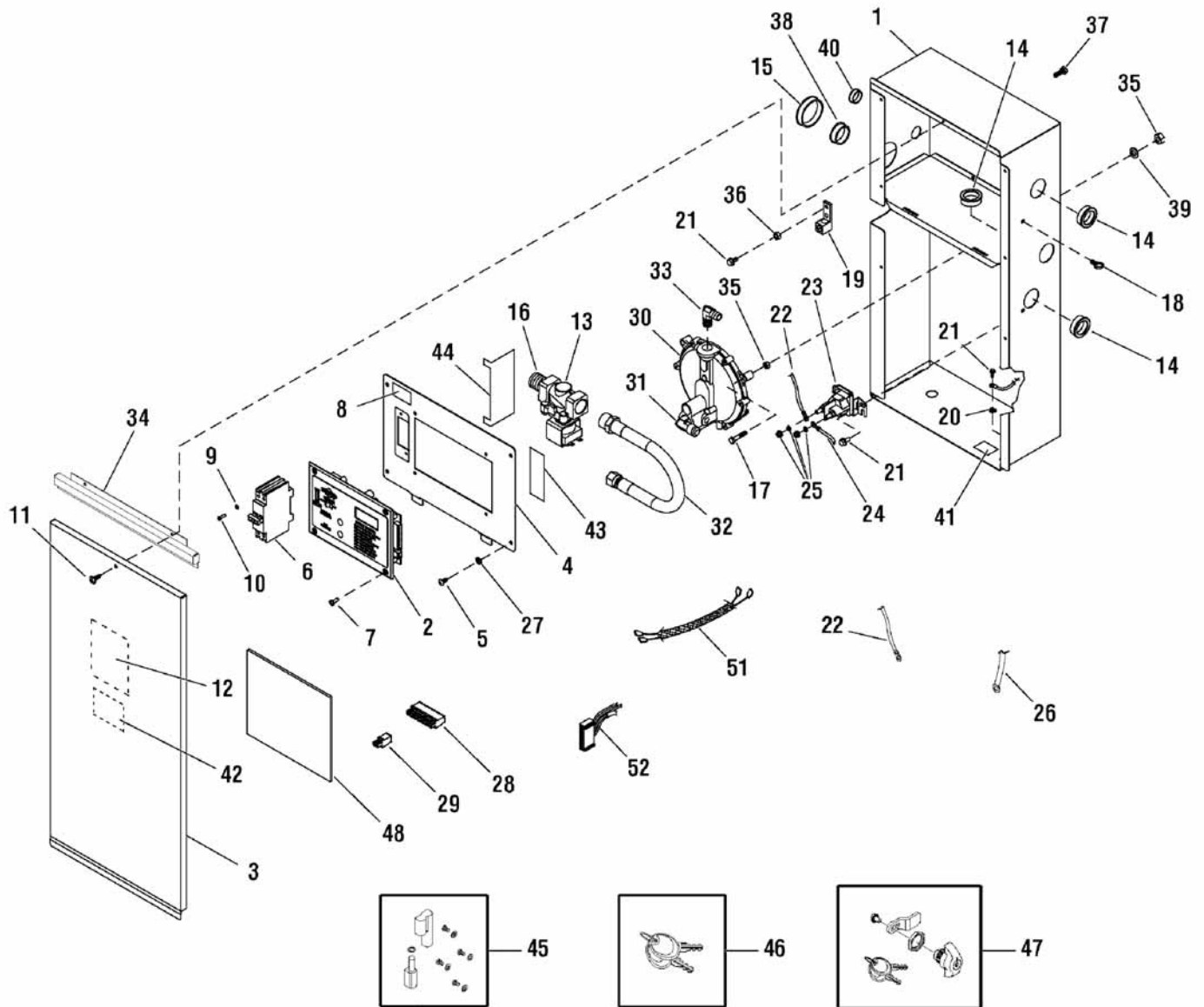
The above parts group applies to the following Mfg. Nos.:

040315-0 - 7,000 Watt Home Generator System

# Exploded View - Control Panel

NOTE: Unless noted otherwise, use the standard hardware torque specification chart.

208189



The above parts group applies to the following Mfg. Nos.:

040315-0 - 7,000 Watt Home Generator System

## Parts List - Control Panel

Ref.	Part No.	Description	Ref.	Part No.	Description
30	193291GS	REGULATOR, NG/LPG			
31	186151GS	FITTING			
32	186148GS	HOSE, Flex, NG/LPG			
33	205955GS	FITTING			
34	T207901GS	SUPPORT RAIL			
35	-----	* NUT, M6 - 1.0			
36	-----	* NUT, 1/4-20			
37	-----	* CAPSCREW, Hex Head, 1/4 - 20 x 3/4			
38	197493GS	BUSHING, Snap			
39	-----	* LOCKWASHER, 1/4			
40	186582GS	BUSHING, Snap			
41	B4986GS	DECAL			
42	193297GS	DECAL			
43	196699GS	DECAL			
44	207040GS	INSULATION			
45	198890GS	HINGE			
46	207652GS	KEY, Latch			
47	209538GS	LATCH			
48	193664GS	INSULATION			
51	206318GS	HARNESS, Wiring			
52	198894GS	HARNESS, Wiring			
--	198573GS	FUSE (Not Illustrated)			

Not for  
Reproduction

### Footnotes:

\* Items without part numbers are common fasteners and are available at your local hardware store.

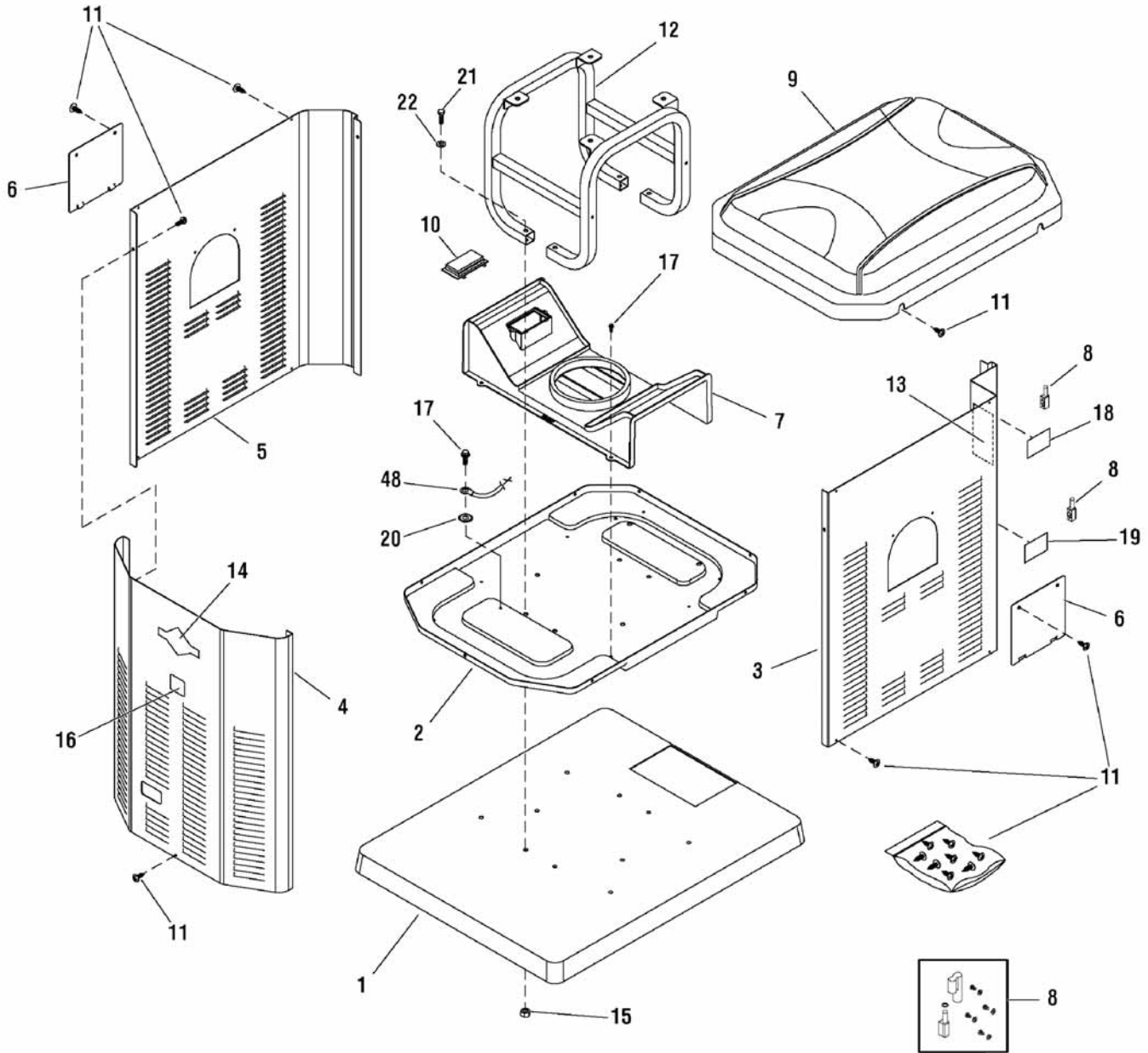
**The above parts group applies to the following Mfg. Nos.:**

040315-0 - 7,000 Watt Home Generator System

# Exploded View - Enclosure

NOTE: Unless noted otherwise, use the standard hardware torque specification chart.

208191



The above parts group applies to the following Mfg. Nos.:

040315-0 - 7,000 Watt Home Generator System

## Parts List - Enclosure

Ref.	Part No.	Description	Ref.	Part No.	Description
1	192441AGS	PAD, Mounting			
2	T191852GS	BASE, Plate			
3	208198GS	ASSEMBLY, Panel, Right			
4	208197GS	ASSEMBLY, Panel, Front			
5	208199GS	ASSEMBLY, Panel, Left Side			
6	T208787GS	COVER, Oil Filter Drain			
7	195228GS	DUCT			
8	198890GS	HINGE			
9	207586GS	ASSEMBLY, Roof			
10	196070GS	REGULATOR, Voltage			
11	206387GS	KIT, Enclosure Hardware Bag			
12	B191860GS	CRADLE			
13	206824GS	DECAL, Warning, Auto Start/Shock			
14	207095GS	DECAL, Logo			
15	----	*NUT, Flange Serrated, 5/16-18			
16	200409GS	DECAL, Warning Hot			
17	B4300GS	BOLT			
18	195642GS	DECAL, Rainproof			
19	186643GS	DECAL, Fuel Inlet			
20	----	*WASHER, Shakeproof, Ext M6 - 1/4			
21	----	*CAPSCREW, Hex Head, 5/16-18 x 2			
22	----	*WASHER, Flat, 5/16 - M8			
48	15253621GS	WIRE, Ground			

Not for  
Reproduction

### Footnotes:

\* Items without part numbers are common fasteners and are available at your local hardware store.

**The above parts group applies to the following Mfg. Nos.:**

040315-0 - 7,000 Watt Home Generator System

Not for  
Reproduction

Not for  
Reproduction

Not for  
Reproduction

# Hardware Identification & Torque Specifications

Torque Specification Chart FOR STANDARD METRIC MACHINE HARDWARE (Tolerance ± 20%)								
Property Class	5.6 Class 5.6		8.8 Class 8.8		10.9 Class 10.9		12.9 Class 12.9	
Size Of Hardware	in/lbs ft/lbs	Nm.	in/lbs ft/lbs	Nm.	in/lbs ft/lbs	Nm.	in/lbs ft/lbs	Nm.
M3	5.88	.56	13.44	1.28	19.2	1.80	22.92	2.15
M4	13.44	1.28	30.72	2.90	43.44	4.10	52.56	4.95
M5	26.4	2.50	60.96	5.75	5.97	8.10	7.15	9.7
M6	44.64	4.3	7.3	9.9	10.3	14	12.1	16.5
M7	5.2	7.1	12.1	16.5	16.9	23	19.9	27
M8	7.7	10.5	17.7	24	25	34	29	40
M10	15	21	35	48	50	67	59	81
M12	26	36	61	83	86.2	117	103	140
M14	42	58	101	132	136	185	162	220
M16	64	88	147	200	210	285	250	340
M18	89	121	202	275	287	390	346	470
M20	126	171	290	390	405	550	486	660
M22	169	230	390	530	559	745	656	890
M24	217	295	497	375	708	960	840	1140
M27	320	435	733	995	1032	1400	1239	1680
M30	435	590	995	1350	1401	1900	1681	2280
M33	590	800	1349	1830	1902	2580	2278	3090
M36	759	1030	1740	2360	2441	3310	2935	3980
M39	988	1340	2249	3050	3163	4290	3798	5150

Torque Specification Chart FOR STANDARD MACHINE HARDWARE (Tolerance ± 20%)						
Hardware Grade	No Marks SAE Grade 2		SAE Grade 5		SAE Grade 8	
Size Of Hardware	in/lbs ft/lbs	Nm.	in/lbs ft/lbs	Nm.	in/lbs ft/lbs	Nm.
8-32	19	2.1	30	3.4	41	4.6
8-36	20	2.3	31	3.5	43	4.9
10-24	27	3.1	43	4.9	60	6.8
10-32	31	3.5	49	5.5	68	7.7
1/4-20	66	7.6	8	10.9	12	16.3
1/4-28	76	8.6	10	13.6	14	19.0
5/16-18	11	15.0	17	23.1	25	34.0
5/16-24	12	16.3	19	25.8	29	34.0
3/8-16	20	27.2	30	40.8	45	61.2
3/8-24	23	31.3	35	47.6	50	68.0
7/16-14	30	40.8	50	68.0	70	95.2
7/16-20	35	47.6	55	74.8	80	108.8
1/2-13	50	68.0	75	102.0	110	149.6
1/2-20	55	74.8	90	122.4	120	163.2
9/16-12	65	88.4	110	149.6	150	204.0
9/16-18	75	102.0	120	163.2	170	231.2
5/8-11	90	122.4	150	204.0	220	299.2
5/8-18	100	136	180	244.8	240	326.4
3/4-10	160	217.6	260	353.6	386	525.0
3/4-16	180	244.8	300	408.0	420	571.2
7/8-9	140	190.4	400	544.0	600	816.0
7/8-14	155	210.8	440	598.4	660	897.6
1-8	220	299.2	580	788.8	900	1,244.0
1-12	240	326.4	640	870.4	1,000	1,360.0

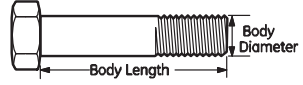
The guides and ruler furnished below are designed to help you select the appropriate hardware.



**Nut, M8**

Thread Diameter (mm)  
Inside Diameter (in)  
Threads per inch

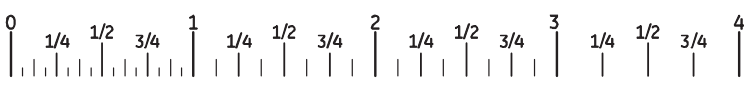
**Nut, 1/2-16**



**Screw, M8- 1.25 x 25**

Thread Diameter (mm)  
Body Diameter  
Distance between threads (mm)  
Threads per inch  
Body Length (mm)  
Body Length (in)

**Screw, 1/2- 16 x 2**



## Standard Hardware Sizing

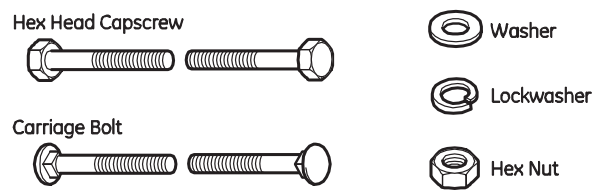
When a washer or nut is identified as **1/2" (M8)**, this is the *Nominal size*, meaning the *inside diameter* is 1/2 inch (8mm metric thread diameter); if a second number is present it represents the *threads per inch* (distance between threads),

When bolt or capscrew is identified as **1/2-16 x 2"** (M8 - 1.25 x 50), this means the *Nominal size*, or body diameter is 1/2 inch (8mm metric thread diameter), the second number, 16, represents the *threads per inch*, (1.25 thread diameter). The final number is the body length of the bolt or screw, 2 inches (50mm).

## NOTES

- These torque values are to be used for all hardware excluding: locknuts, self-tapping screws, thread forming screws, sheet metal screws and socket head setscrews.
- Recommended seating torque values for locknuts:
  - for prevailing torque locknuts - use 65% of grade 5 torques.
  - for flange whizlock nuts and screws - use 135% of grade 5 torques.
- Unless otherwise noted on assembly drawings, all torque values must meet this specification.

## Common Hardware Types



## Wrench & Fastener Size Guide

1/4" Bolt or Nut Wrench—7/16"	5/16" Bolt or Nut Wrench—1/2"	3/8" Bolt or Nut Wrench—9/16"	7/16" Bolt or Nut Wrench (Bolt)—5/8" Wrench (Nut)— 11/16"	1/2" Bolt or Nut Wrench—3/4"
M6 Bolt or Nut Wrench—10mm	M8 Bolt or Nut Wrench—13mm	M10 Bolt or Nut Wrench—17mm	M12 Bolt or Nut Wrench—19mm	M14 Bolt or Nut Wrench—22 mm



Not for  
Reproduction



is a trademark of General Electric company  
and is under licensed by Briggs & Stratton  
Power Products Group, LLC.

Copyright © 2010. All Rights reserved. No part of this material may  
be reproduced or transmitted in any form without the express  
written permission of Briggs & Stratton Power Products Group, LLC.