



# Illustrated Parts List

**MODEL**  
**040315-0**

Not for  
Reproduction

**7,000 Watt**  
**Home Generator System**

Not for  
Reproduction

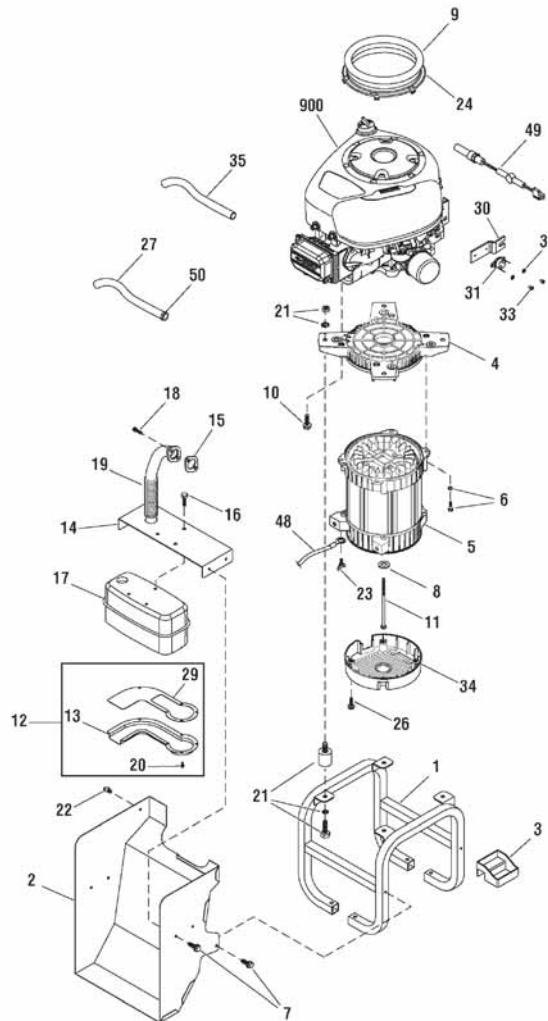
<b>PRODUCT COMPONENTS</b>	<b>PAGES</b>
Main Unit .....	4
Alternator .....	6
Control Panel .....	7
Enclosure .....	9
Torque Specification Chart .....	Inside Back Cover

Not for  
Reproduction

## Exploded View - Main Unit

NOTE: Unless noted otherwise, use the standard hardware torque specification chart.

0002.t



Ref.	Part No.	Description	Ref.	Part No.	Description
1	B191860GS	CRADLE	18	698941	SCREW
2	194568GS	DUCT	19	194159GS	PIPE, Exhaust
3	193536GS	TRAY, Oil Drain	20	195008GS	KIT, Hardware Deflector
4	191793GS	ADAPTER, Engine	21	194209GS	KIT, Vibration Mount
5	-----	ALTERNATOR ASSEMBLY	22	192940GS	CLIP
6	194728GS	KIT, Hardware Adapter	23	86494GS	SCREW
7	B4300GS	BOLT	24	192853GS	COLLAR, Air Inlet
8	96796GS	WASHER	26	74908GS	TAPTITE
9	208103GS	SEAL	27	206817GS	HOSE, Fuel
10	2830598SM	TAPTITE	29	194221GS	ARRESTOR, Spark
11	187365HGS	CAPSCREW, Hex head, 5/16-24 x 9.84	30	206047GS	PLATE, Temp Switch
12	207270GS	DEFLECTOR, Muffler	31	206045GS	SWITCH
13	193475GS	DEFLECTOR	32	27772GS	WASHER
14	206856GS	BRACKET, Muffler	33	-----	* SCREW, Phillips Head, 4-40 x 1/4
15	692236	GASKET	34	192906GS	COVER, Rear Bearing
16	83512GS	TAPTITE	35	1723165SM	HOSE, Oil Drain
17	207059GS	MUFFLER			

### Footnotes:

\* - Items without part numbers are common fasteners and are available at your local hardware store.

\*\* Contact Engine Manufacturer

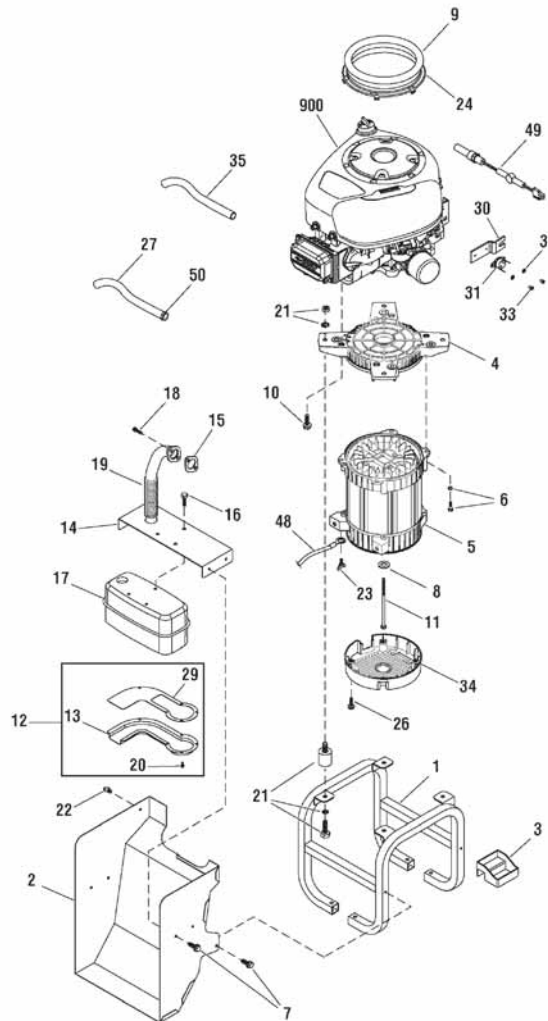
The above parts group applies to the following Mfg. Nos.:

040315-0 - 7,000 Watt Home Generator System

## Exploded View - Main Unit

NOTE: Unless noted otherwise, use the standard hardware torque specification chart.

0002.t



Ref.	Part No.	Description	Ref.	Part No.	Description
48	15253621GS	WIRE	--	199475GS	PAINT, Spray Silver (Optional Accessory)
49	01916	WARMER, Oil			
50	57822GS	CLAMP			
900	----	** ENGINE			
--	207985GS	MANUAL, Operator's (Not Illustrated)			
--	209431GS	MANUAL, Install (Not Illustrated)			
--	277766TRI	MANUAL, Engine (Not Illustrated)			
--	208193GS	KIT, Manual ACC (Not Illustrated)			
--	202295GS	FLEX HOSE (Not Illustrated)			
--	198811GS	PAINT, Touch-Up, Silver (Not Illustrated)			
--	207337GS	KIT, LED Remote (Not Illustrated)			
--	790263	FILTER, Cartridge (Not Illustrated)			
--	492392B	FILTER, Oil (Not Illustrated)			
--	195069GS	KIT, LP Conversion (Not Illustrated)			
--	196731BGS	BIT, Screw (Not Illustrated)			
--	01915	WARMER, Battery (Optional Accessory)			
--	6034	KIT, Maintenance (Optional Accessory)			

### Footnotes:

\* - Items without part numbers are common fasteners and are available at your local hardware store.

\*\* Contact Engine Manufacturer

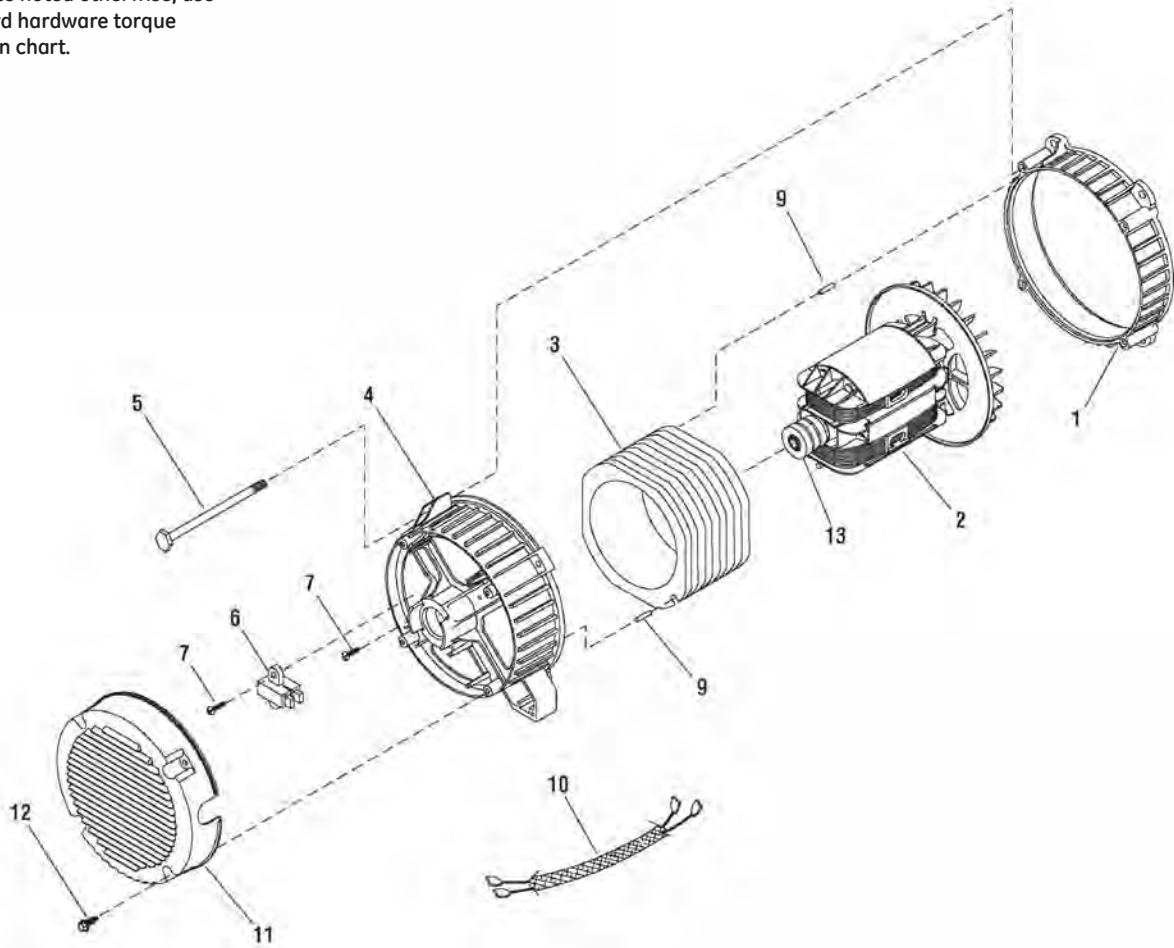
The above parts group applies to the following Mfg. Nos.:

040315-0 - 7,000 Watt Home Generator System

## Exploded View - Alternator

NOTE: Unless noted otherwise, use the standard hardware torque specification chart.

206480



Ref.	Part No.	Description	Ref.	Part No.	Description
1	209599GS	ADAPTER, Alternator			
2	195430GS	ROTOR			
3	206542GS	STATOR			
4	193336GS	RBC (with O-Ring p/n 189197GS)			
5	86308BGS	BOLT			
6	66386GS	BRUSH ASSEMBLY			
7	66849GS	TAPTITE			
9	81917GS	PIN			
10	193472GS	HARNESS, Wiring			
11	192906GS	COVER, Rear Bearing			
12	74908GS	TAPTITE			
13	65791GS	BEARING			

### Footnotes:

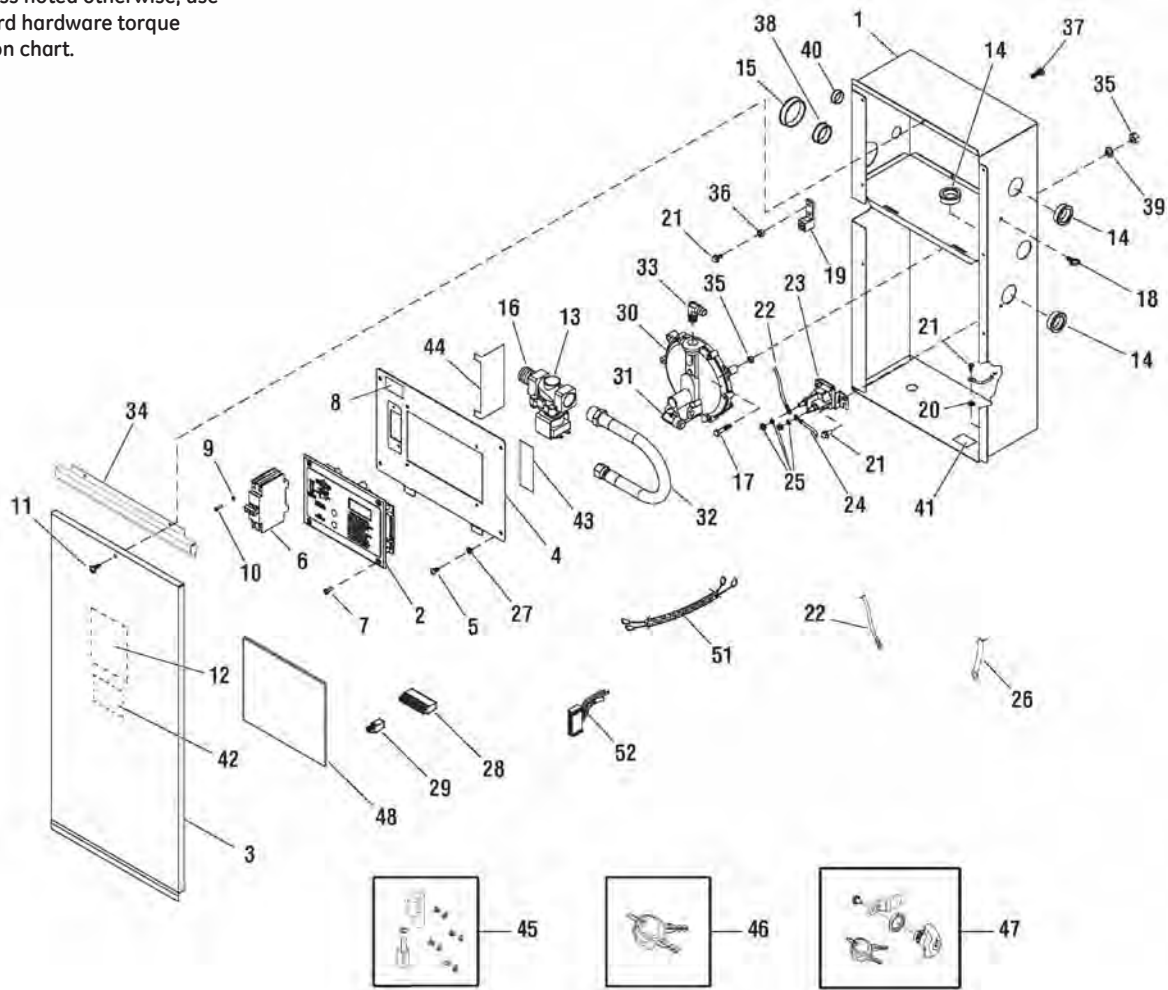
The above parts group applies to the following Mfg. Nos.:

040315-0 - 7,000 Watt Home Generator System

## Exploded View - Control Panel

208189

NOTE: Unless noted otherwise, use the standard hardware torque specification chart.



Ref.	Part No.	Description	Ref.	Part No.	Description
1	207903GS	BOX, Control Panel	18	192940GS	CLIP
2	311351GS	BOARD, Circuit	19	199011GS	LUG
3	T207012GS	PANEL, Access	20	-----	* WASHER, Shakeproof, EXT, M6-1/4
4	T201825GS	PANEL, Control	21	B4300GS	BOLT
5	192445GS	SCREW	22	193171GS	CABLE, Battery, Red
6	208789GS	BREAKER, Circuit, 30A	--	206609GS	DECAL
7	205947GS	SCREW	23	691656	CONTACTOR, Starter
8	205394GS	DECAL	24	194659GS	WIRE
9	-----	* WASHER, Shakeproof, #6	25	194251GS	KIT, Hardware
10	-----	* SCREW, Phillips Head, #6-32 x 3/8	26	188573AGS	CABLE, Battery, Black
11	-----	* SCREW, #10 x 5/8	--	206609GS	DECAL
12	205397GS	DECAL	27	-----	* WASHER, Shakeproof, EXT #10
13	194683GS	SOLENOID, Gas Fuel	28	205992GS	CONNECTOR, 10 Pin
14	186173GS	BUSHING, Snap	29	205991GS	CONNECTOR, 2 Pin
15	203015GS	BUSHING, Snap	30	193291GS	REGULATOR, NG/LPG
16	192449GS	FITTING	31	186151GS	FITTING
17	-----	* CAPSCREW, Hex Head, M6-1 x 30			

### Footnotes:

\* Items without part numbers are common fasteners and are available at your local hardware store.

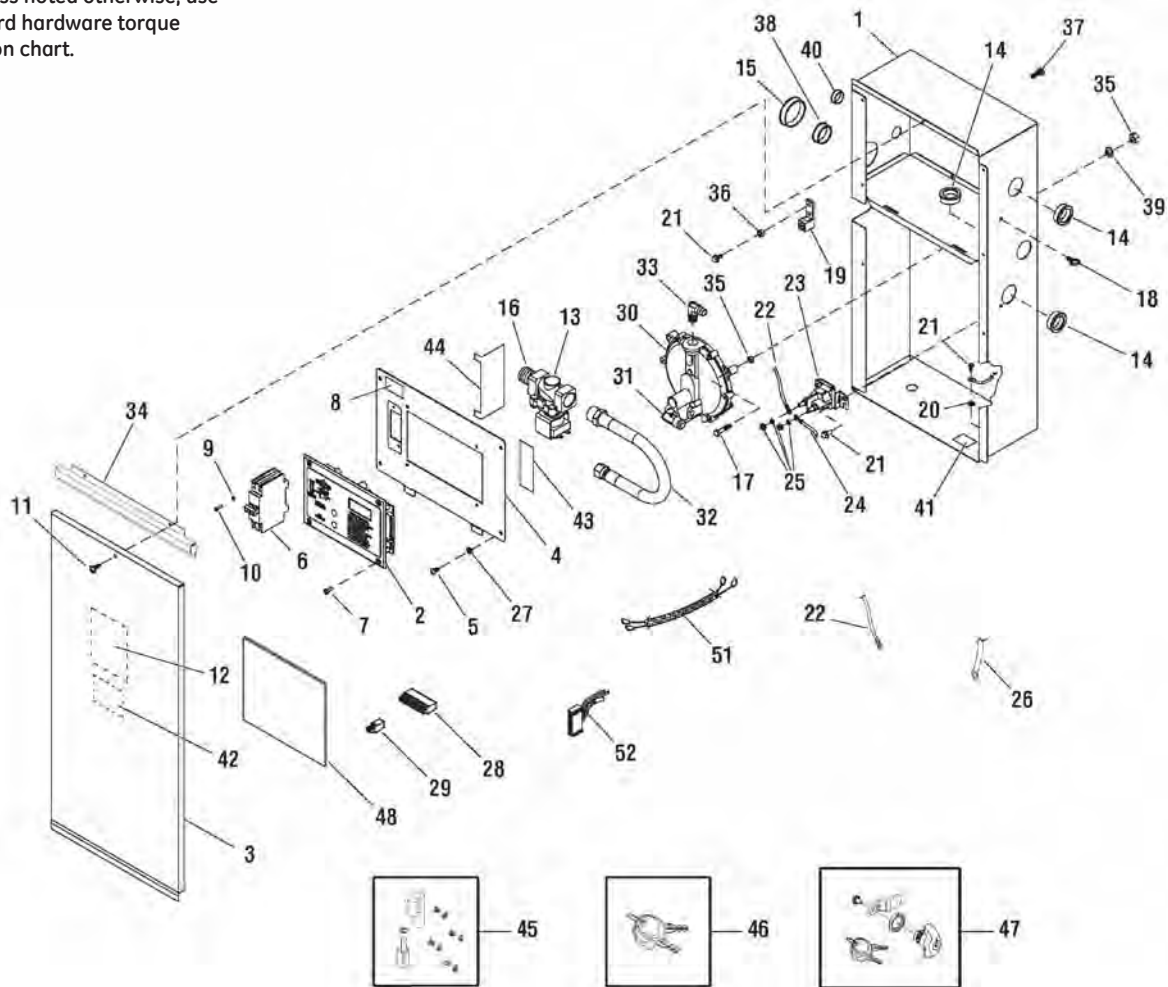
The above parts group applies to the following Mfg. Nos.:

040315-0 - 7,000 Watt Home Generator System

## Exploded View - Control Panel

208189

NOTE: Unless noted otherwise, use the standard hardware torque specification chart.



Ref.	Part No.	Description	Ref.	Part No.	Description
32	186148GS	HOSE, Flex, NG/LPG	51	206318GS	HARNES, Wiring
33	205955GS	FITTING	52	198894GS	HARNES, Wiring
34	T207901GS	SUPPORT RAIL	--	198573GS	FUSE (Not Illustrated)
35	-----	* NUT, M6 - 1.0			
36	-----	* NUT, 1/4-20			
37	-----	* CAPSCREW, Hex Head, 1/4 - 20 x 3/4			
38	197493GS	BUSHING, Snap			
39	-----	* LOCKWASHER, 1/4			
40	186582GS	BUSHING, Snap			
41	B4986GS	DECAL			
42	193297GS	DECAL			
43	196699GS	DECAL			
44	207040GS	INSULATION			
45	198890GS	HINGE			
46	207652GS	KEY, Latch			
47	209538GS	LATCH			
48	193664GS	INSULATION			

### Footnotes:

\* Items without part numbers are common fasteners and are available at your local hardware store.

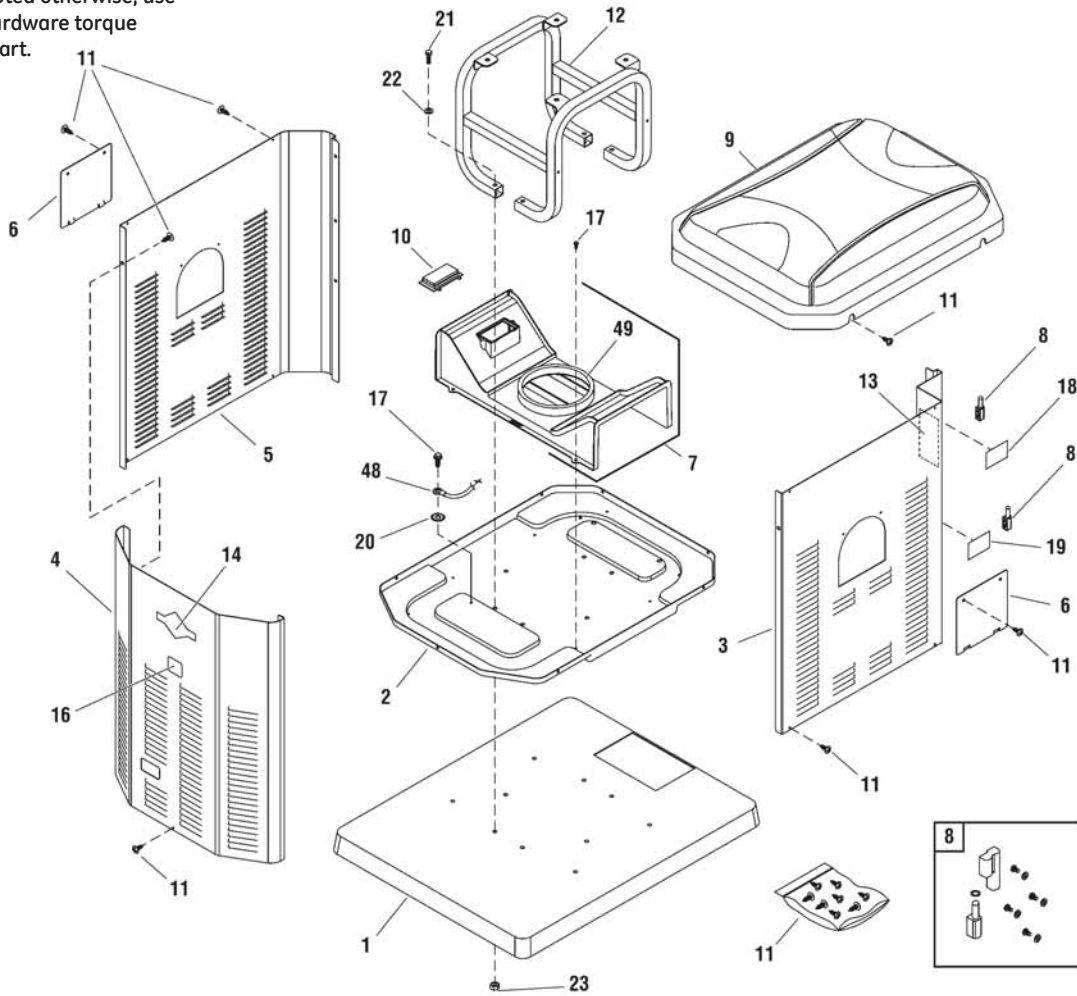
The above parts group applies to the following Mfg. Nos.:

040315-0 - 7,000 Watt Home Generator System

# Exploded View - Enclosure

310902

NOTE: Unless noted otherwise, use the standard hardware torque specification chart.



Ref.	Part No.	Description	Ref.	Part No.	Description
1	192441AGS	PAD, Mounting	18	195642GS	DECAL, Rainproof
2	T191852GS	BASE, Plate	19	186643GS	DECAL, Fuel Inlet
3	208198GS	ASSEMBLY, Panel, Right	20	-----	*WASHER, Shakeproof, Ext M6 - 1/4
4	208197GS	ASSEMBLY, Panel, Front	21	-----	*CAPSCREW, Hex Head, 5/16-18 x 2
5	208199GS	ASSEMBLY, Panel, Left Side	22	-----	*WASHER, Flat, 5/16 - M8
6	T208787GS	COVER, Oil Filter Drain	23	-----	*NUT, Flange Serrated, 5/16-18
7	195228GS	KIT, Baffle, Air In-take w/Seals (Includes Ref. No. 49)	48	15253621GS	WIRE, Ground
8	198890GS	HINGE	49	193061GS	SEAL, Foam
9	207586GS	ASSEMBLY, Roof			
10	196070GS	REGULATOR, Voltage			
11	206387GS	KIT, Enclosure Hardware Bag			
12	B191860GS	CRADLE			
13	206824GS	DECAL, Warning, Auto Start/Shock			
14	207095GS	DECAL, Logo			
16	200409GS	DECAL, Warning Hot			
17	B4300GS	BOLT			

**Footnotes:**

\* Items without part numbers are common fasteners and are available at your local hardware store.

The above parts group applies to the following Mfg. Nos.:

040315-0 - 7,000 Watt Home Generator System

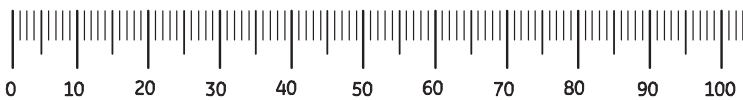
Not for  
Reproduction

# Hardware Identification & Torque Specifications

Torque Specification Chart FOR STANDARD METRIC MACHINE HARDWARE (Tolerance ± 20%)								
Property Class	5.6		8.8		10.9		12.9	
	Class 5.6		Class 8.8		Class 10.9		Class 12.9	
Size Of Hardware	in/lbs ft/lbs	Nm.	in/lbs ft/lbs	Nm.	in/lbs ft/lbs	Nm.	in/lbs ft/lbs	Nm.
M3	5.88	.56	13.44	1.28	19.2	1.80	22.92	2.15
M4	13.44	1.28	30.72	2.90	43.44	4.10	52.56	4.95
M5	26.4	2.50	60.96	5.75	<b>5.97</b>	8.10	<b>7.15</b>	9.7
M6	44.64	4.3	<b>7.3</b>	9.9	<b>10.3</b>	14	<b>12.1</b>	16.5
M7	<b>5.2</b>	7.1	<b>12.1</b>	16.5	<b>16.9</b>	23	<b>19.9</b>	27
M8	<b>7.7</b>	10.5	<b>17.7</b>	24	<b>25</b>	34	<b>29</b>	40
M10	<b>15</b>	21	<b>35</b>	48	<b>50</b>	67	<b>59</b>	81
M12	<b>26</b>	36	<b>61</b>	83	<b>86.2</b>	117	<b>103</b>	140
M14	<b>42</b>	58	<b>101</b>	132	<b>136</b>	185	<b>162</b>	220
M16	<b>64</b>	88	<b>147</b>	200	<b>210</b>	285	<b>250</b>	340
M18	<b>89</b>	121	<b>202</b>	275	<b>287</b>	390	<b>346</b>	470
M20	<b>126</b>	171	<b>290</b>	390	<b>405</b>	550	<b>486</b>	660
M22	<b>169</b>	230	<b>390</b>	530	<b>559</b>	745	<b>656</b>	890
M24	<b>217</b>	295	<b>497</b>	375	<b>708</b>	960	<b>840</b>	1140
M27	<b>320</b>	435	<b>733</b>	995	<b>1032</b>	1400	<b>1239</b>	1680
M30	<b>435</b>	590	<b>995</b>	1350	<b>1401</b>	1900	<b>1681</b>	2280
M33	<b>590</b>	800	<b>1349</b>	1830	<b>1902</b>	2580	<b>2278</b>	3090
M36	<b>759</b>	1030	<b>1740</b>	2360	<b>2441</b>	3310	<b>2935</b>	3980
M39	<b>988</b>	1340	<b>2249</b>	3050	<b>3163</b>	4290	<b>3798</b>	5150

Torque Specification Chart FOR STANDARD MACHINE HARDWARE (Tolerance ± 20%)						
Hardware Grade	No Marks		SAE Grade 5		SAE Grade 8	
	SAE Grade 2		SAE Grade 5		SAE Grade 8	
Size Of Hardware	in/lbs ft/lbs	Nm.	in/lbs ft/lbs	Nm.	in/lbs ft/lbs	Nm.
8-32	19	2.1	30	3.4	41	4.6
8-36	20	2.3	31	3.5	43	4.9
10-24	27	3.1	43	4.9	60	6.8
10-32	31	3.5	49	5.5	68	7.7
1/4-20	66	7.6	<b>8</b>	10.9	<b>12</b>	16.3
1/4-28	76	8.6	<b>10</b>	13.6	<b>14</b>	19.0
5/16-18	<b>11</b>	15.0	<b>17</b>	23.1	<b>25</b>	34.0
5/16-24	<b>12</b>	16.3	<b>19</b>	25.8	<b>29</b>	34.0
3/8-16	<b>20</b>	27.2	<b>30</b>	40.8	<b>45</b>	61.2
3/8-24	<b>23</b>	31.3	<b>35</b>	47.6	<b>50</b>	68.0
7/16-14	<b>30</b>	40.8	<b>50</b>	68.0	<b>70</b>	95.2
7/16-20	<b>35</b>	47.6	<b>55</b>	74.8	<b>80</b>	108.8
1/2-13	<b>50</b>	68.0	<b>75</b>	102.0	<b>110</b>	149.6
1/2-20	<b>55</b>	74.8	<b>90</b>	122.4	<b>120</b>	163.2
9/16-12	<b>65</b>	88.4	<b>110</b>	149.6	<b>150</b>	204.0
9/16-18	<b>75</b>	102.0	<b>120</b>	163.2	<b>170</b>	231.2
5/8-11	<b>90</b>	122.4	<b>150</b>	204.0	<b>220</b>	299.2
5/8-18	<b>100</b>	136	<b>180</b>	244.8	<b>240</b>	326.4
3/4-10	<b>160</b>	217.6	<b>260</b>	353.6	<b>386</b>	525.0
3/4-16	<b>180</b>	244.8	<b>300</b>	408.0	<b>420</b>	571.2
7/8-9	<b>140</b>	190.4	<b>400</b>	544.0	<b>600</b>	816.0
7/8-14	<b>155</b>	210.8	<b>440</b>	598.4	<b>660</b>	897.6
1-8	<b>220</b>	299.2	<b>580</b>	788.8	<b>900</b>	1,244.0
1-12	<b>240</b>	326.4	<b>640</b>	870.4	<b>1,000</b>	1,360.0

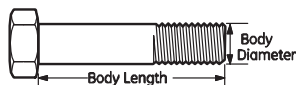
The guides and ruler furnished below are designed to help you select the appropriate hardware.



**Nut, M8**

Thread Diameter (mm)  
Inside Diameter (in)  
Threads per inch

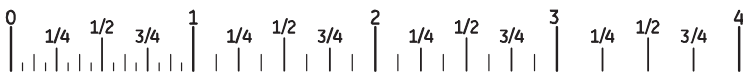
**Nut, 1/2-16**



**Screw, M8- 1.25 x 25**

Thread Diameter (mm)  
Body Diameter  
Distance between threads (mm)  
Threads per inch  
Body Length (mm)  
Body Length (in)

**Screw, 1/2- 16 x 2**



## Standard Hardware Sizing

When a washer or nut is identified as **1/2"** (M8), this is the *Nominal size*, meaning the *inside diameter* is 1/2 inch (8mm metric thread diameter); if a second number is present it represents the *threads per inch* (distance between threads),

When bolt or capscrew is identified as **1/2-16 x 2"** (M8 - 1.25 x 50), this means the *Nominal size*, or body diameter is 1/2 inch (8mm metric thread diameter), the second number, 16, represents the *threads per inch*, (1.25 thread diameter). The final number is the body length of the bolt or screw, 2 inches (50mm).

## NOTES

- These torque values are to be used for all hardware excluding: locknuts, self-tapping screws, thread forming screws, sheet metal screws and socket head setscrews.
- Recommended seating torque values for locknuts:
  - for prevailing torque locknuts - use 65% of grade 5 torques.
  - for flange whizlock nuts and screws - use 135% of grade 5 torques.
- Unless otherwise noted on assembly drawings, all torque values must meet this specification.

## Common Hardware Types

Hex Head Capscrew



Washer



Carriage Bolt



Hex Nut

## Wrench & Fastener Size Guide

1/4" Bolt or Nut Wrench—7/16"	5/16" Bolt or Nut Wrench—1/2"	3/8" Bolt or Nut Wrench—9/16"	7/16" Bolt or Nut Wrench (Bolt)—5/8" Wrench (Nut)— 11/16"	1/2" Bolt or Nut Wrench—3/4"
M6 Bolt or Nut Wrench—10mm	M8 Bolt or Nut Wrench—13mm	M10 Bolt or Nut Wrench—17mm	M12 Bolt or Nut Wrench—19mm	M14 Bolt or Nut Wrench—22 mm



Not for  
Reproduction



is a trademark of General Electric company  
and is under licensed by Briggs & Stratton  
Power Products Group, LLC.

Copyright © 2012. All Rights reserved. No part of this material may  
be reproduced or transmitted in any form without the express  
written permission of Briggs & Stratton Power Products Group, LLC.