



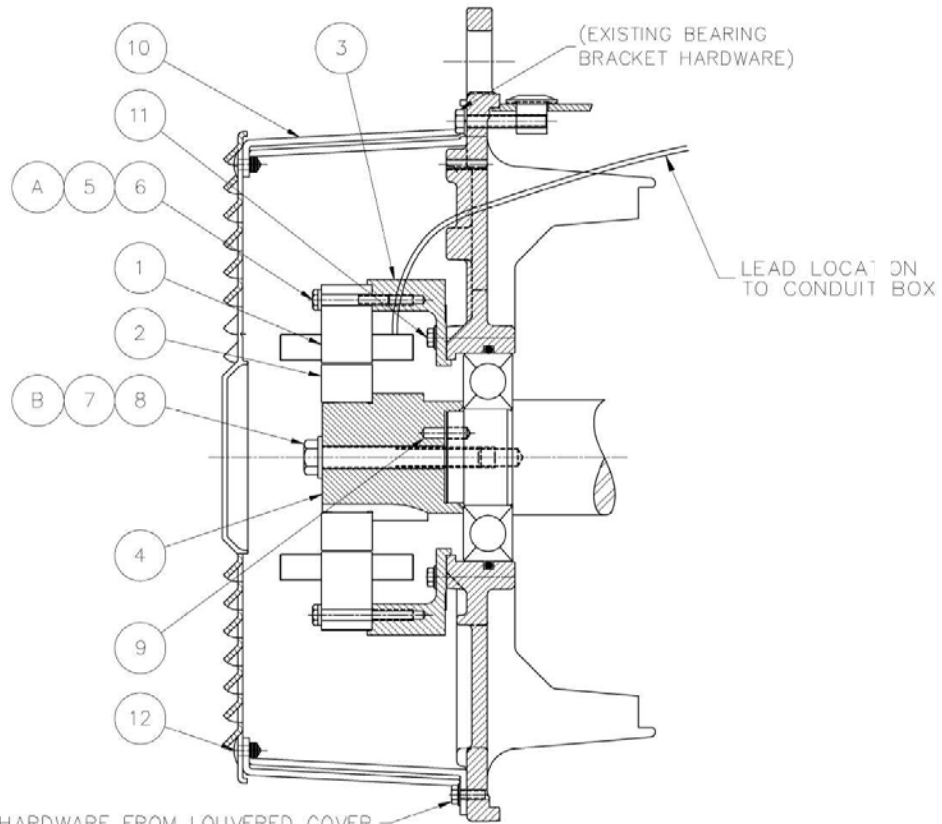
INSTALLATION INSTRUCTIONS FOR ADD-ON PMG KITS MAGNAPLUS® GENERATORS FRAMES 361, 362 & 363

Note: For single bearing generators, this procedure should be done after the generator has been assembled to the engine to prevent the PMG rotor from binding in the PMG stator.

- 1) Remove louvered drip cover p/n 720526-03 from opposite drive end bearing carrier and set aside. This cover will be re-installed on the exciter drip cover p/n 720657-01 during the final operation (see *Step 8*).
- 2) Inspect PMG stator adaptor and opposite drive end-bearing carrier to assure the mating surfaces are free of foreign material. Clean these surfaces as necessary.
- 3) Install PMG stator adaptor p/n 712510-01 on opposite drive end bearing carrier and secure with four (4) Hex Head, flange lock cap screws p/n 801125-04.
- 4) Position PMG rotor assembly p/n A-526816 consisting of PMG rotor, shaft p/n 701991-01 and roll pin p/n 811807-01 on the generator shaft, inserting the roll pin into the pre-drilled hole in the generator shaft.
- 5) Secure PMG rotor assembly to shaft with Hex Head ½ - 13 x 4" bolt p/n 801112-15. Torque bolt to 84 Ft-Lbs (114 N-m).
- 6) Install PMG stator assembly p/n A-525548-1 on stator adaptor. Secure with 4, ¼ - 20 x 1.75" cap screws p/n 801000-08. Torque screws to 6 Ft-Lbs (8 N-m). Pass the PMG stator leads through upper opening in the opposite drive end bearing carrier and into the generator connection box. Inspect air gap between the PMG stator and the PMG rotor. You may have to loosen the PMG stator and stator adapter bolts to adjust the position of both the stator and adaptor to achieve a uniform air gap all around the exciter rotor. Nominal air gap is 0.040". A piece of cardboard, paper or other non-metallic material approximately 1/32" thick could be used as a feeler gauge in the process of alignment.
- 7) Loosen the opposite drive end bearing carrier retaining screws, install drip cover slotted holes over the bolt heads and rotate the drip cover until it is in the proper position. Tighten the retaining bolts.
- 8) Install louvered drip cover on end of exciter cover with 4, ¼ Push Pins (Christmas Tree Type) part number 801203-01.
- 9) Install the automatic voltage regulator and capacitor in the generator connection box as shown in DVR2000E/EC drawing B-779885-0A or PM300 drawing B-779835-0A.

TYPE MAGNAPLUS FRAMES 361, 2, & 3 ADD-ON PMG PARTS LIST
Reference Assembly Drawing: 779631-0A, Rev. 9

ITEM #	PART DESCRIPTION	QTY.	PART NUMBER
1	PMG Stator Assembly	1	A-525548-1
2	PMG Rotor Assembly 430 PLS	1	A-526816
3	Stator Adaptor Machined 360 PMG	1	712510-01
4	SHAFT 360 PLS PMG Adaptor	1	701991-01
5	Hex Hd Cap ¼-20 – GR 5	4	801000-08
6	Washer, Belleville ¼	4	A-9682-2CC
7	Bolt Hex Hd ½-13 – GR 8	1	801112-15
8	Washer, Belleville ½	4	A-9682-1CC
9	Roll Pin .25 x .88	1	811807-01
10	Drip Cover PMG Add-on 360PLS	1	720657-01
11	Screw HX FLG Lock M6 X 1	4	801125-04
12	Snap In Clip “Christmas Tree”	4	801203-021
A	PMG stator mounting bolts to be torqued to 6 ft-Lbs (8 N-m)		
B	PMG rotor mounting bolt to be torqued to 25 ft-Lbs (114 N-m)		



USE EXISTING HARDWARE FROM LOUVERED COVER TO MOUNT PMG COVER; INSTALL PMG COVER ITEM #10 WITH SLOTS TOWARD THE BOTTOM OF THE GENERATOR.