

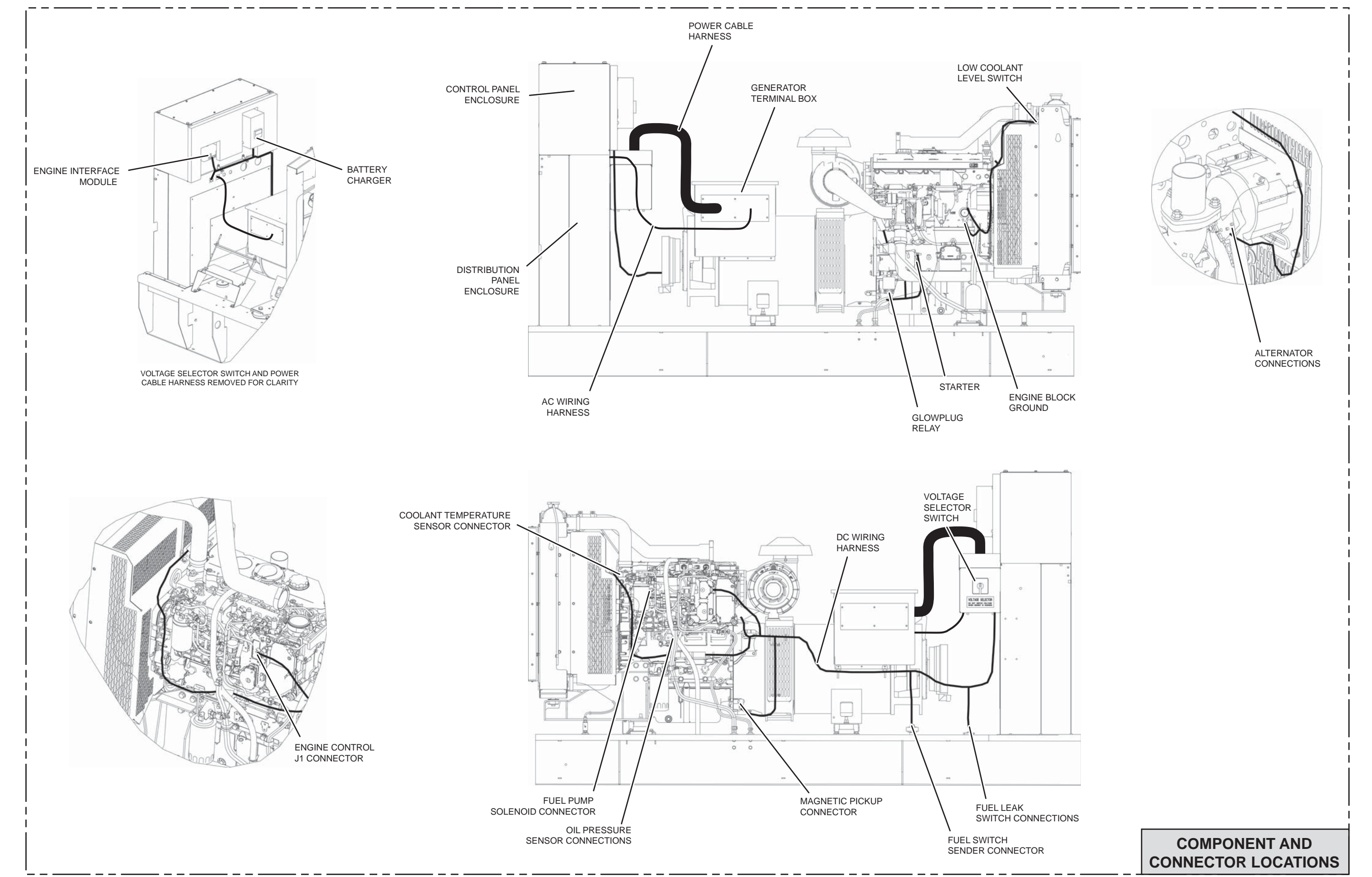
# Schematic

## C4.4 XQ45 and XQ60 Generator Set Electrical System

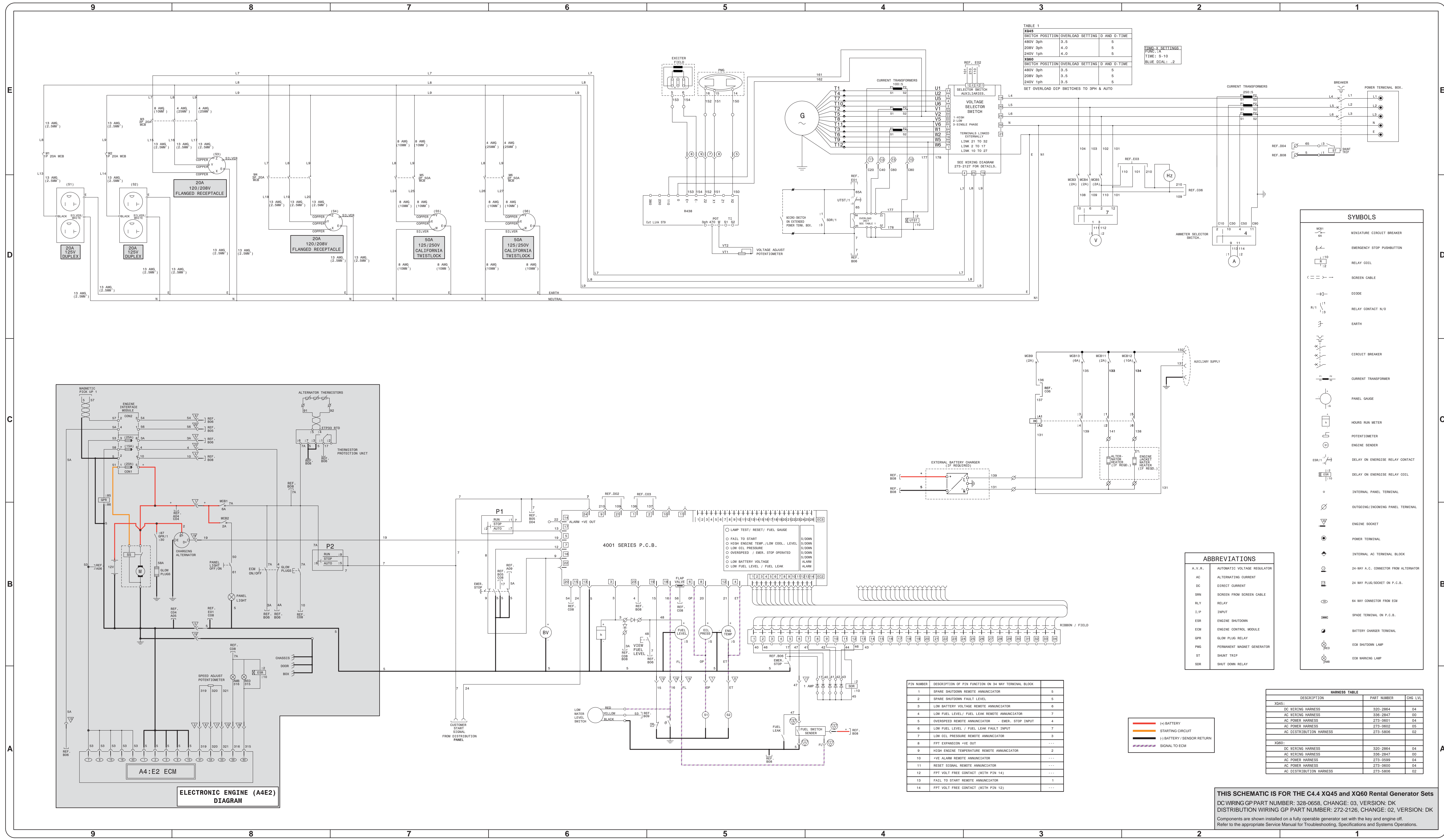
GLE1-UP

©2009 Caterpillar  
All Rights Reserved

Printed in U.S.A.



**KENR9562**  
20 Page, (Dimensions: 39 inches x 24 inches)



**TABLE 1**

**XQ45**

SWITCH POSITION	OVERLOAD SETTING	D AND O-TIME
480V 3ph	3.5	5
208V 3ph	4.0	5
240V 1ph	4.0	5

**XQ60**

SWITCH POSITION	OVERLOAD SETTING	D AND O-TIME
480V 3ph	3.5	5
208V 3ph	3.5	5
240V 1ph	3.5	5

SET OVERLOAD DIP SWITCHES TO 3PH & AUTO

GEN. SETTINGS  
TIME: 9-10  
BLUE DIAL: .2

**SYMBOLS**

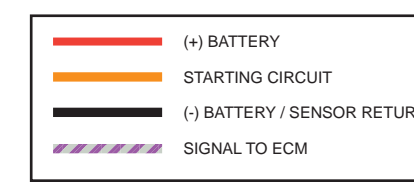
- MINIATURE CIRCUIT BREAKER
- EMERGENCY STOP PUSHBUTTON
- RELAY COIL
- SCREEN CABLE
- DIODE
- RELAY CONTACT N/O
- EARTH
- CIRCUIT BREAKER
- CURRENT TRANSFORMER
- PANEL GAUGE
- HOURS RUN METER
- POTENTIOMETER
- ENGINE SENDER
- DELAY ON ENERGISE RELAY CONTACT
- DELAY ON ENERGISE RELAY COIL
- INTERNAL PANEL TERMINAL
- OUTGOING/INCOMING PANEL TERMINAL
- ENGINE SOCKET
- POWER TERMINAL
- INTERNAL AC TERMINAL BLOCK
- 24-WAY A.C. CONNECTOR FROM ALTERNATOR
- 24-WAY PLUG/SOCKET ON P.C.B.
- 64-WAY CONNECTOR FROM ECM
- SPACE TERMINAL ON P.C.B.
- BATTERY CHARGER TERMINAL
- ECM SHUTDOWN LAMP
- ECM WARNING LAMP

**ABBREVIATIONS**

A.V.R.	DESCRIPTION
AC	ALTERNATING CURRENT
DC	DIRECT CURRENT
SRN	SCREEN FROM SCREEN CABLE
RLY	RELAY
I/P	INPUT
ESR	ENGINE SHUTDOWN
ECM	ENGINE CONTROL MODULE
GRB	GROUND PLUG RELAY
PMG	PERMANENT MAGNET GENERATOR
ST	SHUNT TRIP
SDR	SHUT DOWN RELAY

**PIN NUMBER**      **DESCRIPTION OF PIN FUNCTION ON 34-WAY TERMINAL BLOCK**

1	SPARE SHUTDOWN REMOTE ANNUNCIATOR	5
2	SPARE SHUTDOWN FAULT LEVEL	5
3	LOW BATTERY VOLTAGE REMOTE ANNUNCIATOR	6
4	LOW FUEL LEVEL / FUEL LEAK REMOTE ANNUNCIATOR	7
5	OVERSPEED REMOTE ANNUNCIATOR - EMER. STOP INPUT	4
6	LOW FUEL LEVEL / FUEL LEAK FAULT INPUT	7
7	LOW OIL PRESSURE REMOTE ANNUNCIATOR	3
8	PPT EXPANSION +VE OUT	---
9	HIGH ENGINE TEMPERATURE REMOTE ANNUNCIATOR	2
10	+VE ALARM REMOTE ANNUNCIATOR	---
11	RESET SIGNAL REMOTE ANNUNCIATOR	---
12	PPT VOLT FREE CONTACT (WITH PIN 14)	---
13	FAIL TO START REMOTE ANNUNCIATOR	1
14	PPT VOLT FREE CONTACT (WITH PIN 12)	---



**HARNESS TABLE**

DESCRIPTION	PART NUMBER	CHD. LVL.
XQ45:		
DC WIRING HARNESS	320-2864	04
AC WIRING HARNESS	336-2847	00
AP POWER HARNESS	273-0601	04
AD POWER HARNESS	273-0603	05
AC DISTRIBUTION HARNESS	273-5806	02
XQ60:		
DC WIRING HARNESS	320-2864	04
AC WIRING HARNESS	336-2847	00
AP POWER HARNESS	273-0599	04
AD POWER HARNESS	273-0603	04
AC DISTRIBUTION HARNESS	273-5806	02

**THIS SCHEMATIC IS FOR THE C4.4 XQ45 and XQ60 Rental Generator Sets**  
 DC WIRING GP PART NUMBER: 328-0658, CHANGE: 03, VERSION: DK  
 DISTRIBUTION WIRING GP PART NUMBER: 272-2126, CHANGE: 02, VERSION: DK  
 Components are shown installed on a fully operable generator set with the key and engine off.  
 Refer to the appropriate Service Manual for Troubleshooting, Specifications and Systems Operations.