



No.: 07 CSA-08  
May 23, 2007

TO: Service Locations

FROM: Technical Support Development

SUBJECT: **Detroit Diesel Diagnostic Link Web Page**

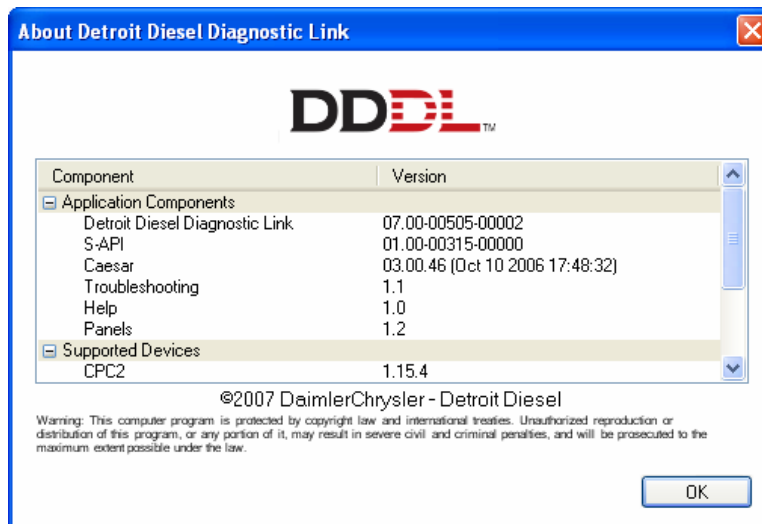
## GENERAL INFORMATION

Detroit Diesel announces the new Diagnostic Link Web Page. This new page is located on the **Detroit Diesel Customer Support Network (DDCSN)** website and will be used to post periodic software updates for DDDL 6.X and DDDL 7.X, Troubleshooting Guides and a glossary of terms.

The latest DDDL 7.0 update is now available and can be downloaded to your computer using the following instructions.

## **Detroit Diesel Diagnostic Link 7.0 and DDEC Reports Software Upgrade**

NOTE: In order to ensure a successful upgrade, you **must** have DDDL 7.0 Service Pack 2 already loaded on your PC. To check this, open up DDDL 7.0 and select **About...** from the Help menu. The first version listed will read **07.00-00505-00002**.



**IMPORTANT NOTE:** There are two parts to the DDDL upgrade. Please follow the instructions carefully to ensure a successful and complete update to your DDDL 7.0 software.

### Part I – Web Download

1. Go to the following Website – **DDCSN.com**
2. On the main window, click “**Continue to Public Page**”



To login, please enter your Member Login and Password, Then click "GO"

Member ID

Password

GO 

**Continue to Public Page**

New Member / Forgot password ?

3. On the following page, select **Tools** from the top menu.



DDCSN  
Detroit Diesel Customer Support Network

PSL Subscription | Service Information Bulletins | 18 Special Publications | **Tools** | Training | Welcome to www.DDCSN.com

Your browser does not support Flash 8.0 or greater, please download the latest version below.

[Terms of Use](#) / [Privacy Policy](#) / [Webmaster](#) / [Contact Us](#) / Copyright © 2007 Detroit Diesel. All Rights Reserved.

**TECHNICAL SUPPORT DEVELOPMENT**  
Customer Support Division  
FRESCHILLNER  
A Cummins/Isuzu Company

4. From the left panel, click on the following: Electronics, Electronic Tools Updates, Diagnostic Link 7.X. Example of this webpage follows.

The screenshot shows the DDCSN (Detroit Diesel Customer Support Network) website. The navigation bar includes links for PSL Subscription, Service Information Bulletins, 18 Special Publications, Tools, and Training. The breadcrumb trail is: Home >> Tools >> Electronics >> Electronic Tools Updates >> Diagnostic Link 7.X. The left sidebar shows a tree view under Electronics, with Diagnostic Link 7.X selected. The main content area is titled 'Diagnostic Link 7.X' and contains the following text:

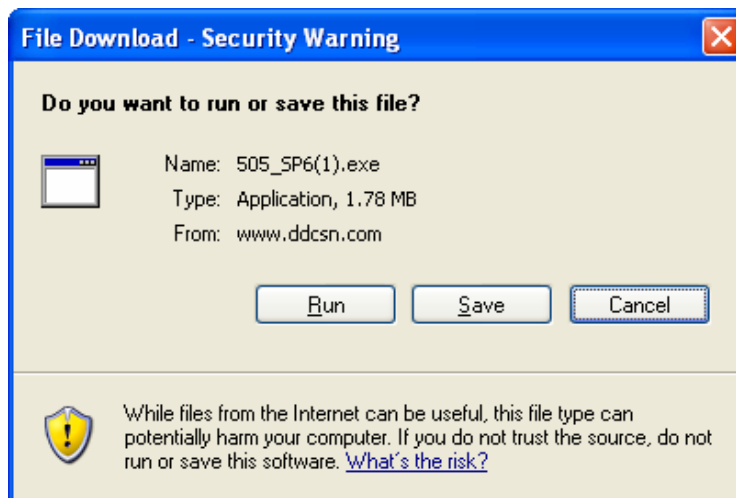
**2007 Electronic Tools Information**  
This screen will be your source for the latest file and information updates to your Detroit Diesel Diagnostic Link 7.0 software.

**New Software Update Information**  
An update to DDDL 7.0 is required to support the new version of MCM (V8.3 and 60.X) and CPC (2.0) software. To download the executable update file click on this link: [DDDL 7.0 \(SP6\) software update](#). In addition, you will need the latest version of DDEC Reports to read this new software. Click on the following link to download [DDEC Reports](#). For a more complete details on what is included in this update, please click on the following link: [DDDL 7.0 update readme](#).

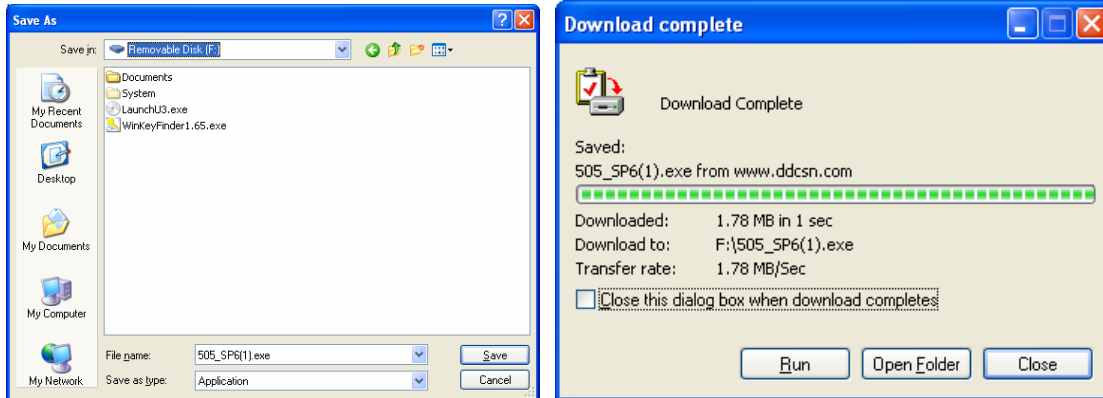
**Documentation for DDDL 7.0 / DDRS 7.0 / DDEC VI - There are 2 types of documents in this section:**  
1) Documents that appear on the DDDL 7.0 or DDRS 7.0 CDs  
2) Documents that have been created or updated since the release of the DDDL 7.0 or DDRS 7.0 CDs.

Please click on the links below to view or download the documents in this section. The S-60 Troubleshooting Guide and Aftertreatment Technician's Guide are fully integrated into the DDDL 7.0 application. The troubleshooting guides for the 2007 MBE 4000 and MBE 900 have not yet been

5. Under New Software Update Information, you will find three links:
- DDDL 7.0 (SP6) software – a self-extracting file containing the updated software and .cbf files.
  - DDEC Reports – the latest version of DDEC Reports which includes the capability to read CPC software version 2.00.
  - DDDL 7.0 Update readme – readme file for this version of DDDL.
6. As always, you are encouraged to browse the **readme** file before downloading any software.
7. To download the update, click on the **DDDL 7.0 (SP6) software** link to display the following Security Warning Screen.
8. Follow step a or b depending on the device to be updated.
- REMOTE COMPUTER:** If you have a computer that does not have access to the internet and requires this update, select save. Go to Step 9.
  - COMPUTER CONNECTED TO WEB:** If the computer connected to the internet is the device that requires the update, select run or open. Go to step 11.

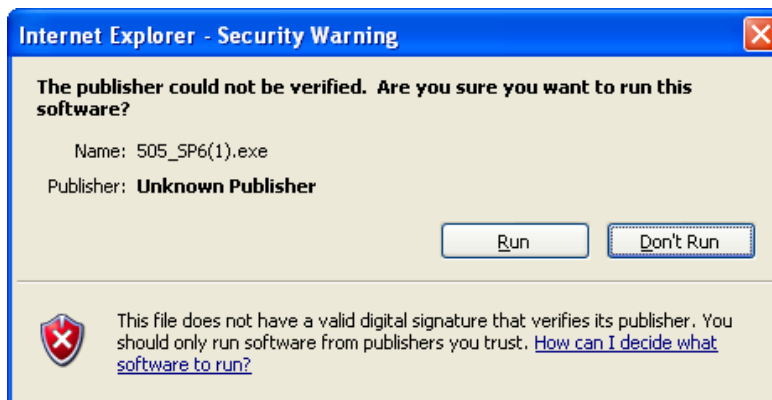


9. Save the file, **505\_SP6(1).exe** to your flash drive by selecting removable disk from the **Save In** drop down menu or save the file to your harddrive first and then use a program such as Roxy CD Writer to copy this onto a CD.
10. Select Save and close this dialog box when complete.

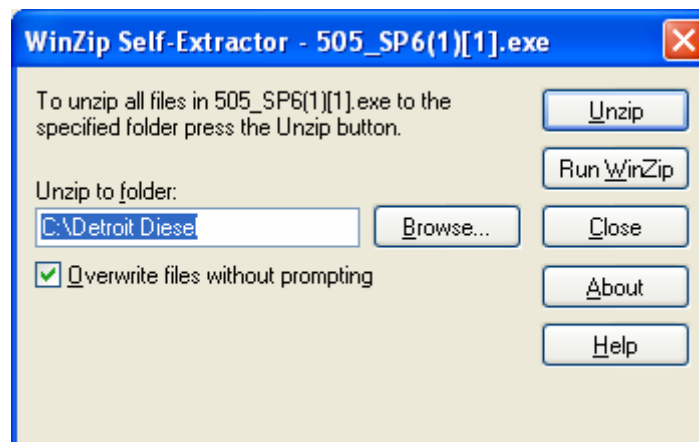


After this file is copied to the computer being updated, open saved file and proceed to steps 11-13.

11. Select **Run or Open** again from the next install screen.



12. Click on the **Unzip** button to run the extraction script.  
**NOTE:** Make sure the box labeled **Overwrite files without prompting** is checked.



13. The extraction script is complete when the **Self-Extractor** screen is displayed. Close the Winzip Self-Extractor.

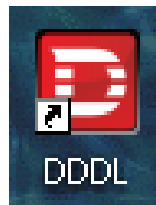


14. Proceed to **Part II – Software Installation.**

### **Part II – Software Installation**

The second part of this upgrade will step you through the installation of the DDDL 7.0 software. Please read and follow the instructions carefully.

1. To begin the installation, open DDDL 7.0 either by double-clicking on your desktop icon (shown here) or through your Start menu. **(Start, Programs, Detroit Diesel, Diagnostic Link, DDDL)**



2. You will notice a number of update scripts flashing across the top of this splash page. When the update is complete, the splash screen will display the following message, **Software updated successfully.**

Detroit Diesel Diagnostic Link

07.00-00505-00002

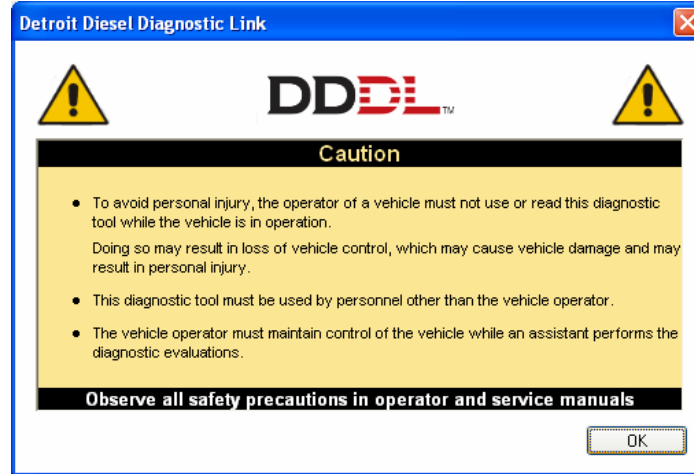
Software updated successfully

**DDDL**™

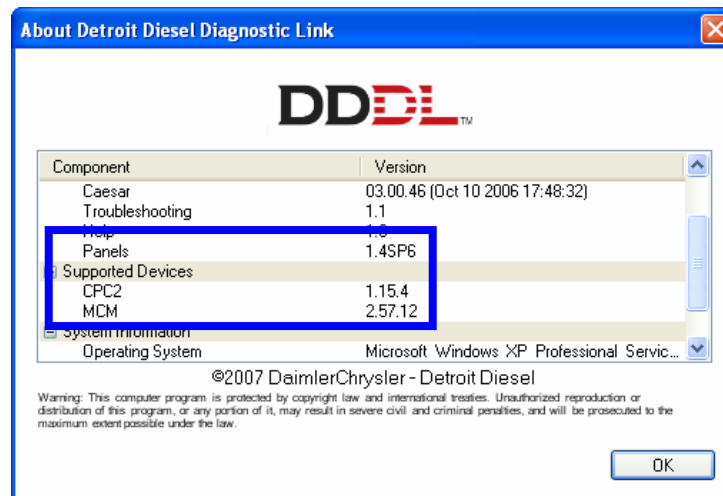
©2007 DaimlerChrysler - Detroit Diesel

Warning: This computer program is protected by copyright law and international treaties. Unauthorized reproduction or distribution of this program, or any portion of it, may result in severe civil and criminal penalties, and will be prosecuted to the maximum extent possible under the law.

3. The standard Caution screen will be displayed.

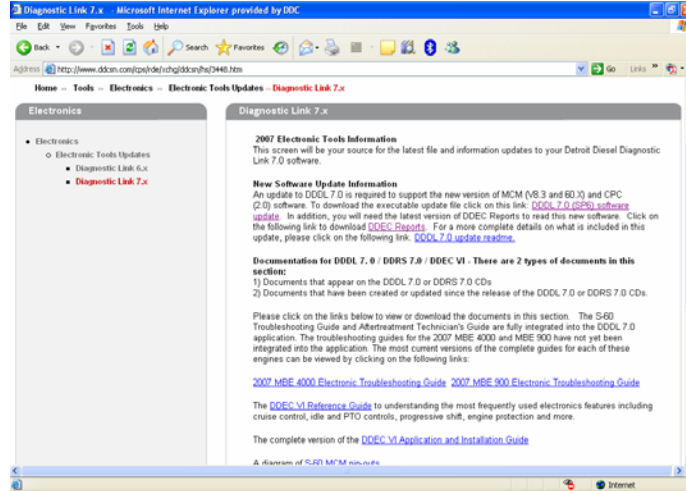


4. Close this and recheck your **About...** screen for updated .CBF files. You should have the following:
- |        |         |
|--------|---------|
| Panels | 1.4SP6  |
| CPC2   | 1.15.4  |
| MCM    | 2.57.12 |

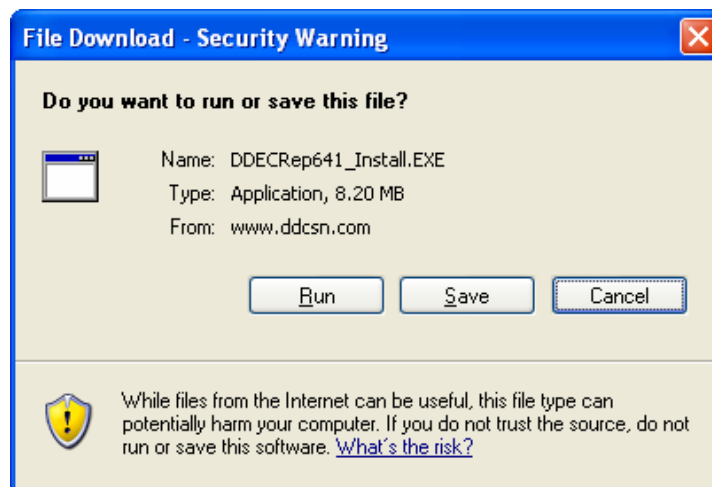


Continue to download and update your DDEC Reports software.

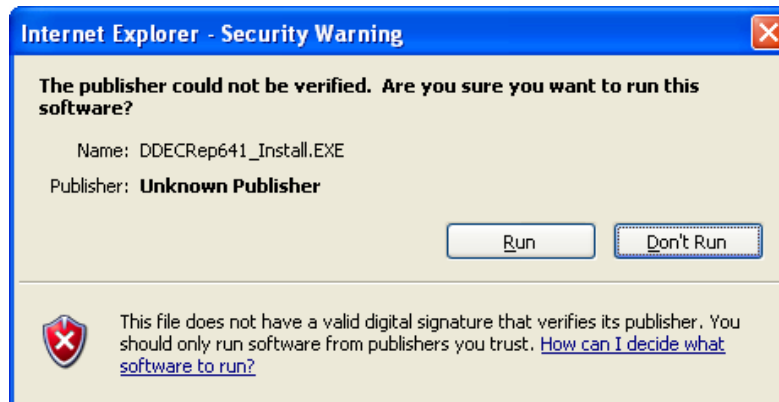
1. From the DDCSN Website, select the link that reads, **DDEC Reports**.



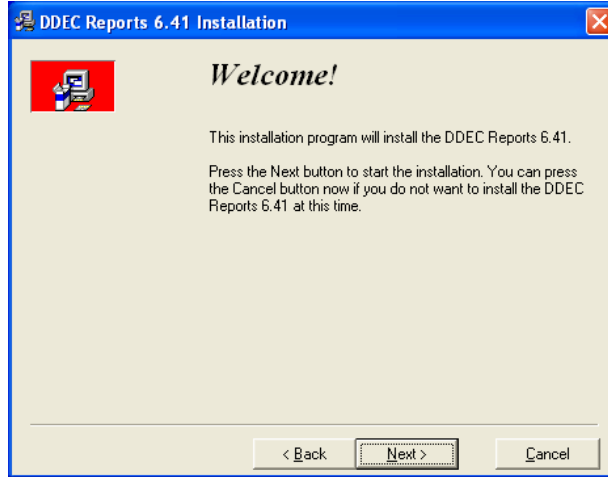
2. When the **Security Warning** screen is displayed, select **Run**.



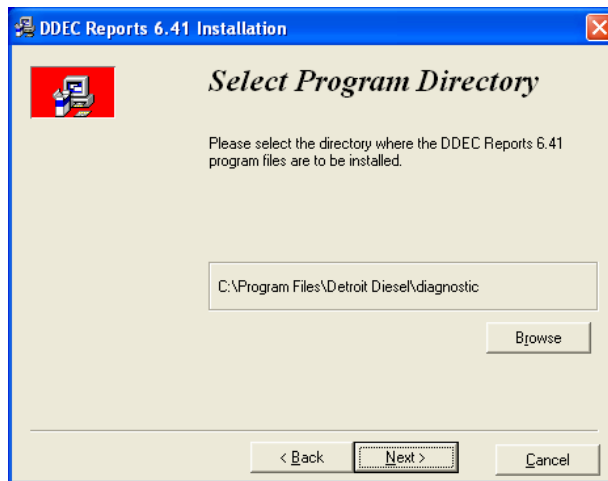
3. Select **Run** again from the next install screen.



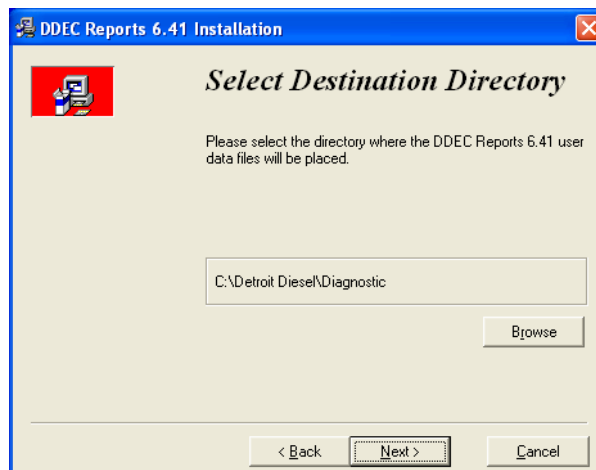
- At the Welcome screen, select **Next** to begin the installation.



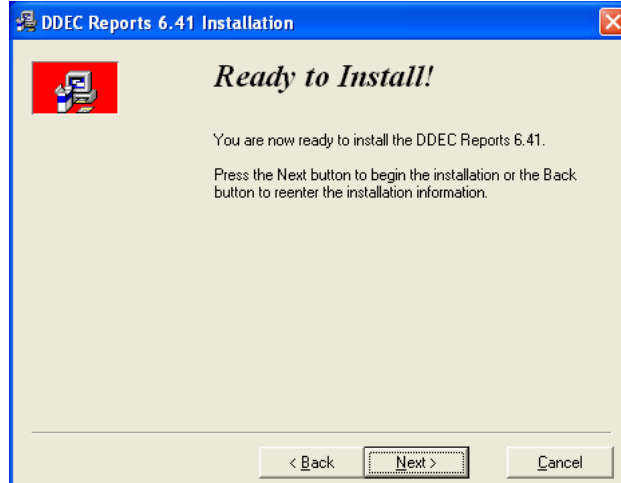
- Select **Next** to continue.



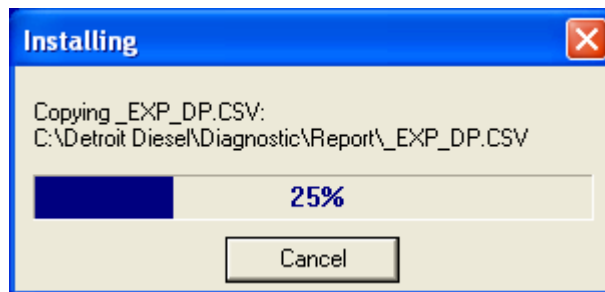
- Select **Next** to continue.



7. Select **Next** to continue.



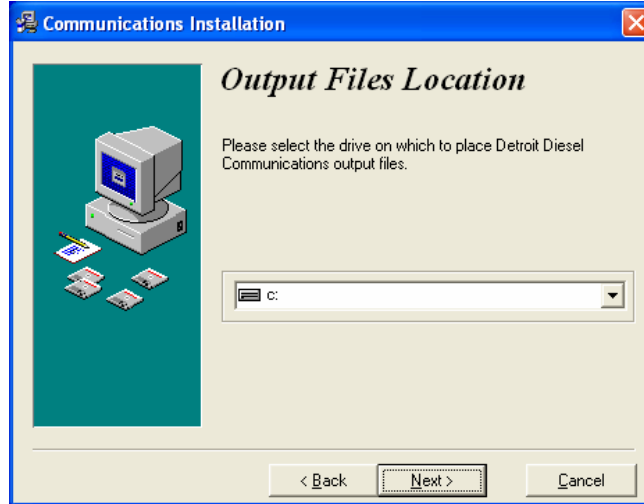
8. The install script is now copying program files to your harddrive.



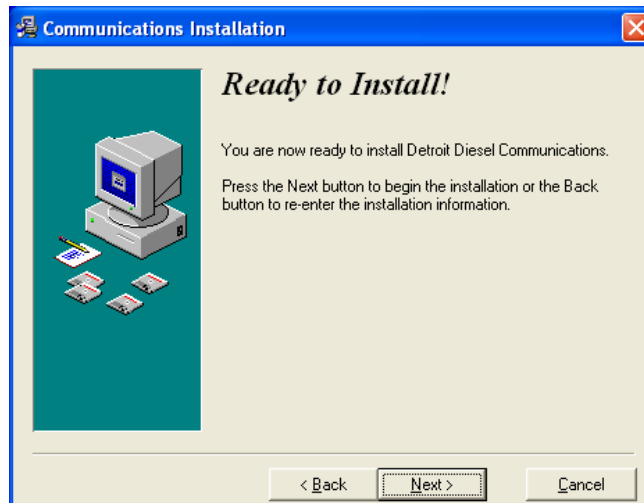
9. Select **Next** at the **Program Directory** screen.



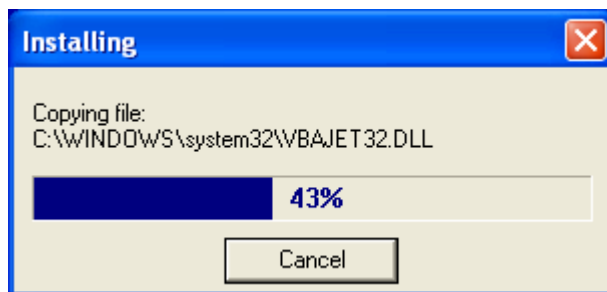
10. Select **Next** to continue.



11. Select **Next** to continue.



12. The install script is now copying program files to your hard drive.



13. You are now prompted to complete the Fleet Information screen. Although you are encouraged to complete this screen in total, the only field that is required to continue with the installation is the **Computer Identifier**.

Fleet Info.

Fleet Information:

Company Name: Detroit Diesel

Address: 13400 Outer Drive W.

City: Detroit State: MI

Zip Code: 48170

Phone Number: (313) 592-5000

Computer Identifier:

Identifier: 1

Fleet Time Zone:

Time Zone: (GMT-05:00) Eastern Standard Time

< Back Next > Cancel Help

14. Select your Interface on the next screen.

Interface

Local Communications Interface:

USB-Link J1708

< Back Next > Cancel Help

15. Select **Next** to continue. (Do not check the Enable box)

HighwayMaster

These settings apply to HighwayMaster Remote Extraction Configuration. They should only be changed if you have HighwayMaster installed and properly setup to perform DDC data extractions.

HighwayMaster:

Enable

Import (Data from WinHost):

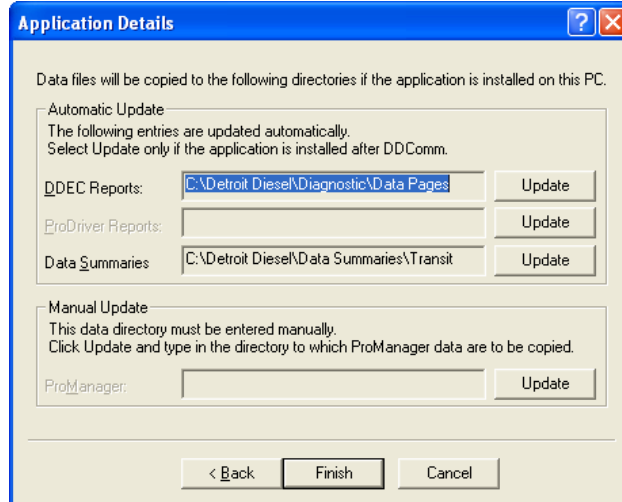
WinHost Export Directory:

Export (Requests to WinHost):

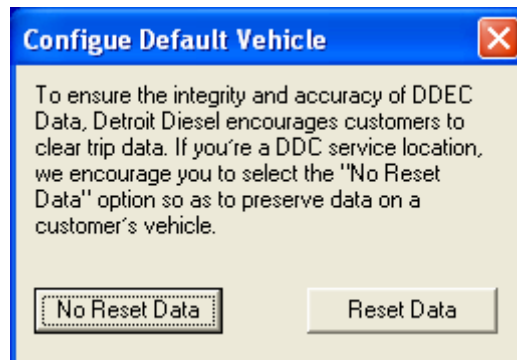
WinHost Import Directory:

< Back Next > Cancel

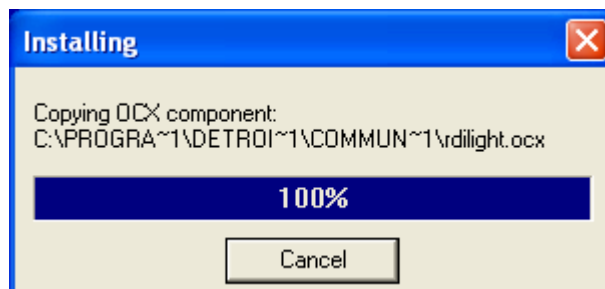
16. Select **Finish** to continue.



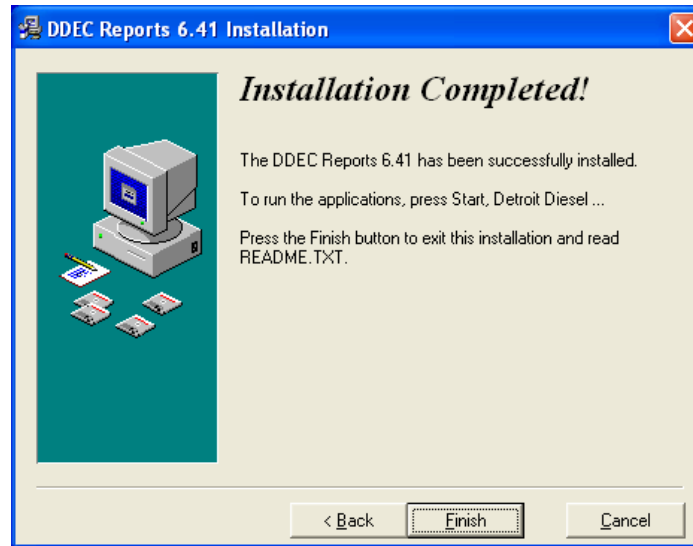
17. The **Configure Default Vehicle Screen** is a newer screen to this installation script. By selecting **Reset Data**, each time you extract from a vehicle, the Trip information will be stored in a data file and cleared from the ECU.



18. The installation will continue.



19. This screen will be displayed when the DDEC Reports installation is complete.



Your DDDL 7.0 software and DDEC Reports is now updated with the latest production software.

#### **CONTACT INFORMATION**

Please contact the Detroit Diesel Customer Support Center at 313-592-5800 if you have any questions.