

DETROIT DIESEL



DDEC® VI Troubleshooting

NUMBER: 08 DDEC VI-40 S.M. REF.: 13.2 ENGINE: DD15 DATE: August 2008

SUBJECT: BELT NOISE

PUBLICATION: DDC-SVC-MAN-0029

A new section has been added to Chapter 13 "Excessive Noise."

13.2 BELT NOISE

Excessive belt noise can be caused by damaged or worn belts, pulleys or a failed accessory. First inspect the belt drive tensioner system for wear and tear.

INSPECTION OF THE BELT DRIVE TENSIONER SYSTEM

Check as follows:

1. Inspect the belt contact surface for chips, flaking, cracks and discoloration.

ABRASION



d130019

CHUNK-OUT



d130020

IMPROPER INSTALL



d130021

CRACKING



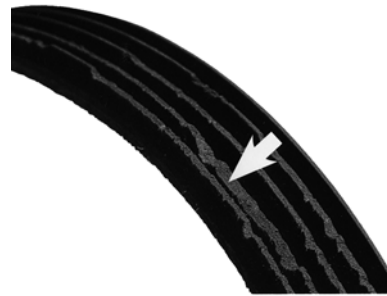
d130022

PILLING



d130023

UNEVEN RIB WEAR



d130024

MISALIGNMENT



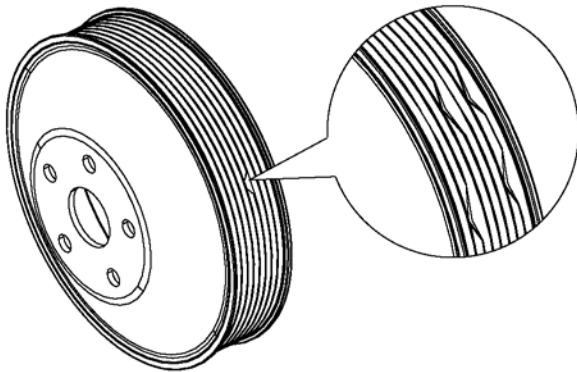
d130025

GRAVEL PENETRATION



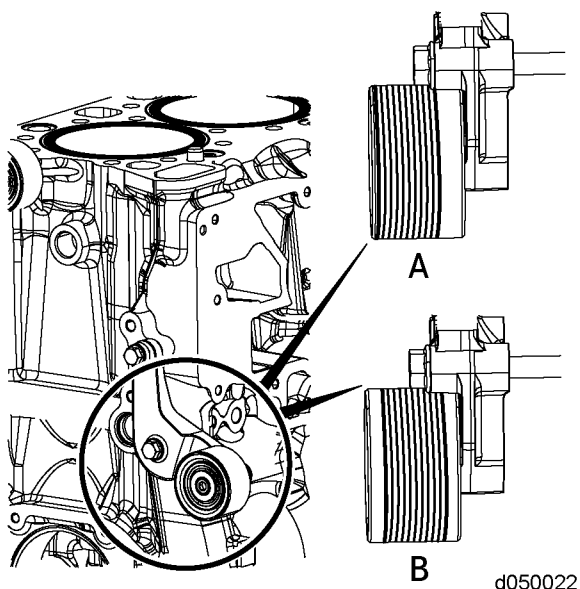
d130026

2. Inspect the bearings in the idler pulleys and accessories by rotating the pulleys to look for bearing slop or choppy feeling bearings.
3. Inspect the springs on the tensioner. If the rubber is damaged or if the spring is damaged, change the assembly.
4. Inspect the pulleys for damage and excessive wear. If pulleys or the belts are damaged, change the damaged pulley and the belt.



d130027

5. Check the belt wear pattern on all idler pulleys.
 - [a] If the belt wear pattern is incorrect (A), change the pulley and bracket assembly.
 - [b] If the belt wear pattern is correct (B), the idler and bracket can be reused.



ADDITIONAL SERVICE INFORMATION

Additional service information is available in the *DD15 Troubleshooting Guide* (DDC-SVC-MAN-0029).

DETROIT DIESEL
CORPORATION



13400 Outer Drive, West / Detroit, Michigan 48239-4001
Telephone: 313-592-5000
www.detroitdiesel.com