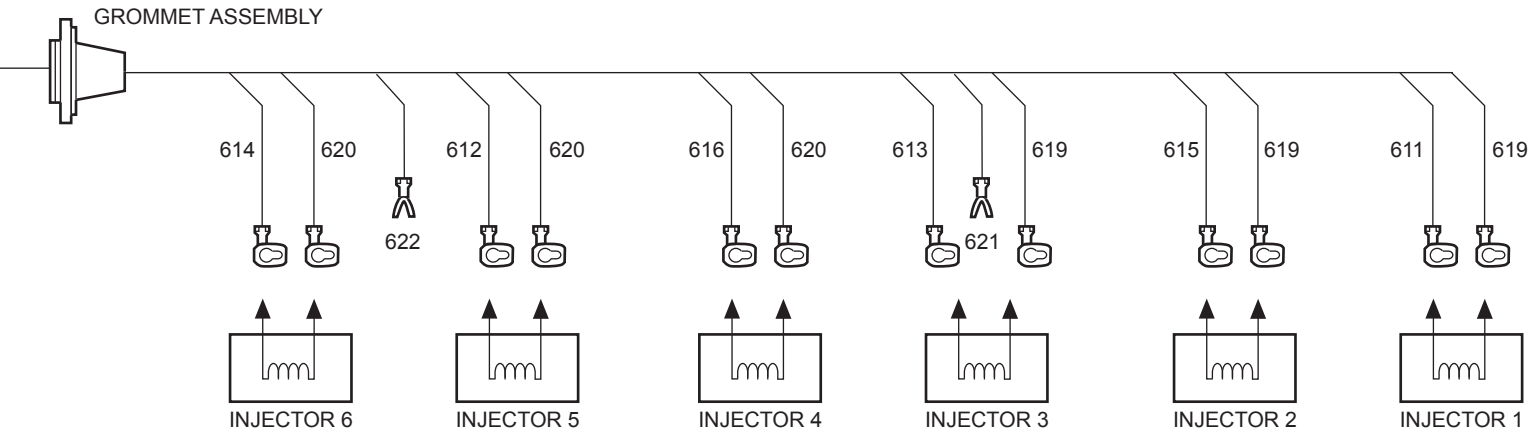
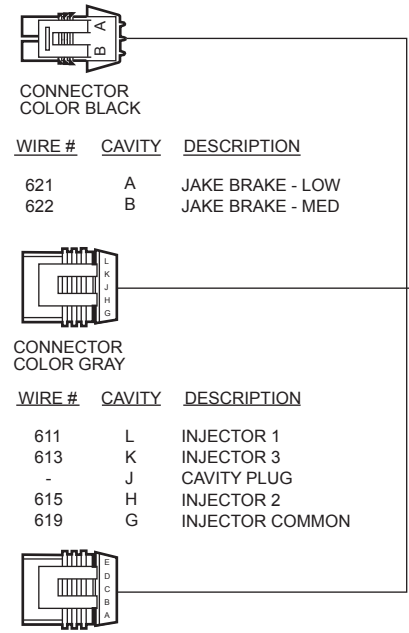


DDEC IV WIRING DIAGRAM



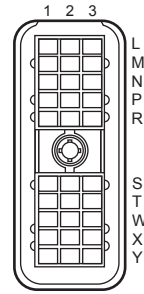
DDC RESPONSIBILITY



INJECTOR HARNESS SCHEMATIC (SERIES 60 WITH JAKE BRAKES SHOWN)

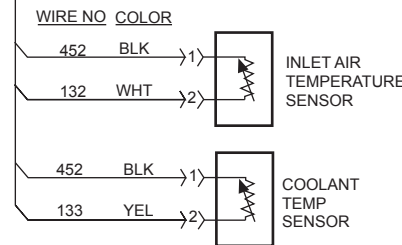
WIRE #	CAVITY	DESCRIPTION
612	A	INJECTOR 5
614	B	INJECTOR 6
-	C	CAVITY PLUG
616	D	INJECTOR 4
620	E	INJECTOR COMMON

LABEL	WIRE NO	CAVITY	COLOR
TRS (-)	109	T-1	PPL
TRS (+)	110	T-2	DK GRN
SRS (+)	111	S-2	LT BLU
SRS (-)	112	S-1	WHT
OIL TEMPERATURE	120	R-2	TAN
INLET AIR TEMPERATURE	132	N-2	WHT
COOLANT TEMPERATURE	133	P-3	YEL
SENSOR SUPPLY (5VDC)	416	W-1	GRA
TURBO BOOST	432	P-1	LT GRN
SENSOR RETURN (ENGINE)	452	Y-2	BLACK
FUEL TEMPERATURE	472	R-3	ORN
OIL PRESSURE	530	P-2	BRN
ENGINE BRAKE MED	561	S-3	RED
ENGINE BRAKE LO	562	T-3	ORN
DIGITAL OUTPUT W-3	563	W-3	YEL
DIGITAL OUTPUT X-3	564	X-3	TAN/BLK
DIGITAL OUTPUT Y-3	565	Y-3	RED
TURBO SPEED	573	X-1	BRN
BAROMETRIC PRESSURE	904	L-1	PNK
TURBO COMPRESSOR INLET TEMP	905	M-1	YEL
TURBO COMPRESSOR OUT TEMPERATURE	906	N-1	DK BLU
EGR TEMPERATURE	907	R-1	DK GRN
EGR CONTROL	909	Y-1	WHT
OI STARTER	910	W-2	ORN
VGT CONTROL	911	X-2	WHT
EGR DELTA PRESSURE	958	M-2	DK BLU
RELATIVE HUMIDITY	976	L-2	WHT
UNUSED	925	L-3	-
UNUSED	926	M-3	-
UNUSED	927	N-3	-

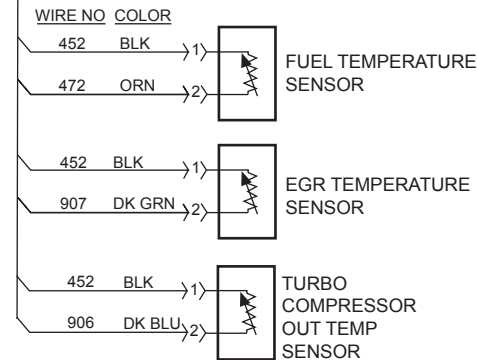


30 WAY CONNECTOR
DDC P/N: 12034400
TERMINAL
DDC P/N: 12103881

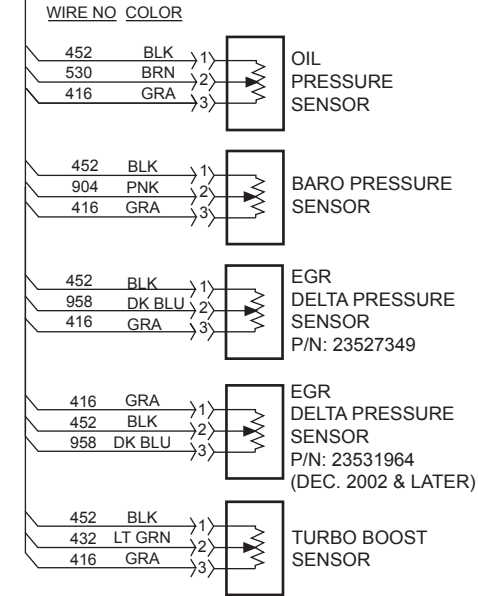
TEMPERATURE SENSORS



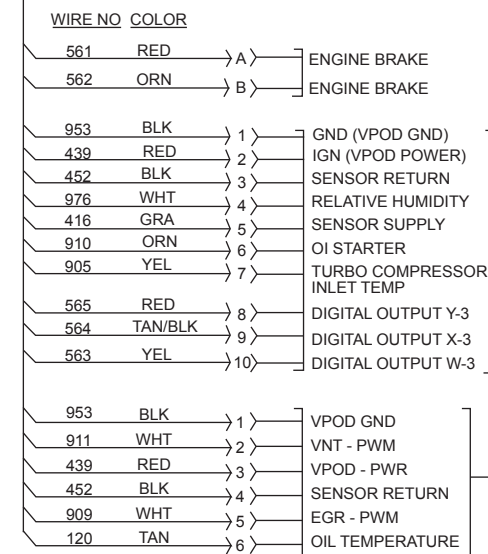
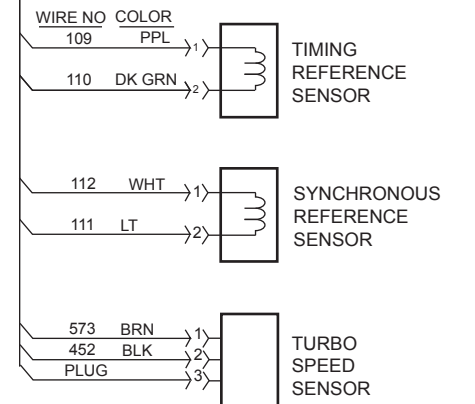
TEMPERATURE SENSORS



PRESSURE SENSORS



SPEED SENSORS

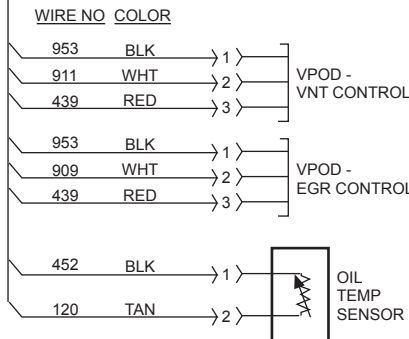


TO 10-PIN CONNECTOR ON VEHICLE INTERFACE HARNESS

CONNECTS TO VPOD/JUMPER HARNESS

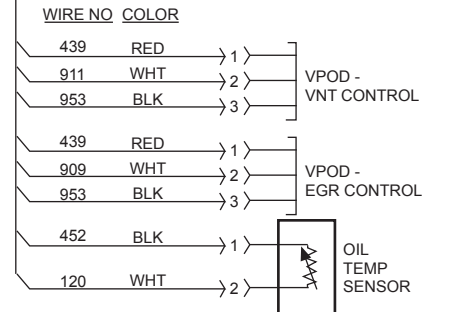
6-PIN CONNECTOR

VPOD JUMPER HARNESS - 24V VPOD



6-PIN CONNECTOR

VPOD JUMPER HARNESS - 12V VPOD



SERIES 60 DDEC IV MY2003 EGR ENGINE SENSOR HARNESS