



## DD15™ Fuel System Technician's Guide

NUMBER: 08 FSTG-4 S.M. REF.: 34.10.15 ENGINE: DD15 DATE: June 2008

**SUBJECT: REMOVING AND INSTALLING THE FUEL BOWL**

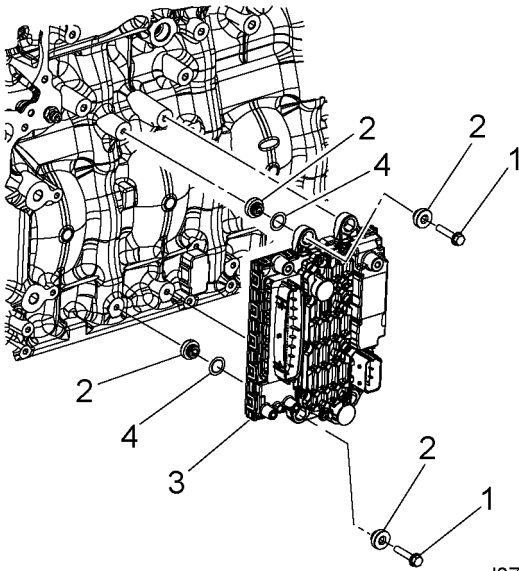
**PUBLICATION: DDC-SVC-MAN-0037**

The procedures for removing and installing the fuel bowl have been added.

### 34.10.15 REMOVAL OF THE FUEL BOWL/FILTER COVER

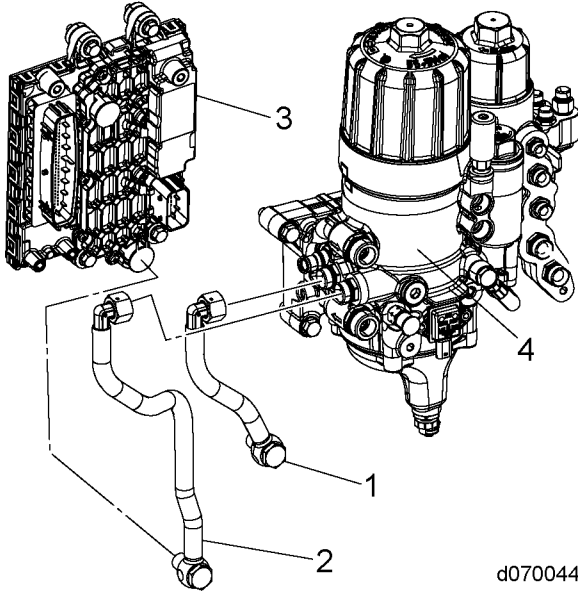
Remove as follows:

1. Drain the fuel module with the water drain.
2. Disconnect the Fuel Temperature Sensor connector and the WIF Sensor connector.
3. Remove the four bolts (1), spacers (2) and O-rings (4) retaining the MCM (3) to the block.

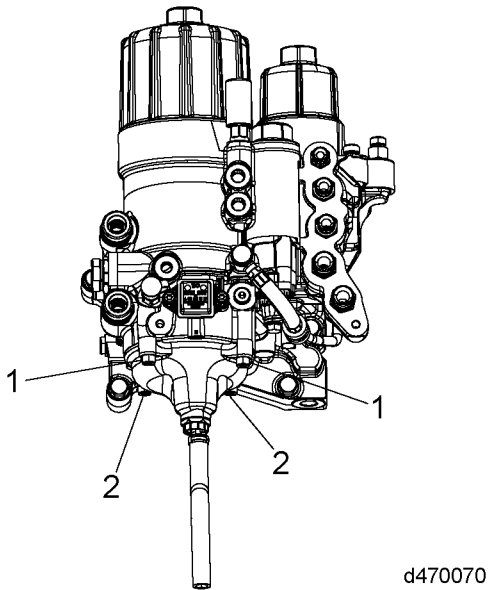


d070043

4. Remove the fuel lines (1, 2) for the MCM (3) cooler at the fuel module (4).



5. Remove the outer two fuel bowl retaining bolts (1).
6. From the bottom with a long extension, remove the inside two fuel bowl bolts (2).

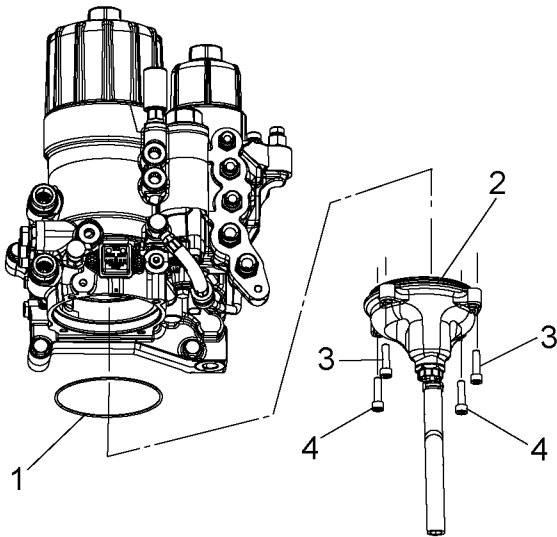


7. Pull down and push side-to-side to remove the bowl from the module.
8. Rotate the bowl 180 degrees and push it forward and pull it out from under the module.

### 34.10.16 INSTALLATION OF THE FUEL BOWL/FILTER COVER

Install as follows:

1. Install a new O-ring (1) onto the bowl (2) and lubricate it with lithium grease.



d470071

2. Install the bowl (2) onto the module and start the outer two bolts (3).
3. Push firmly upward on the bowl until it seats against the module flush all the way around.
4. Install the inner two bolts (4) and torque them. The torque is 20 N·m (15 lb·ft).
5. Torque the two outer bolts. The torque is 20 N·m (15 lb·ft).
6. Install the MCM bolts and torque them. The torque is 34 N·m (25 lb·ft).
7. Install the fuel lines to the MCM cooler.
8. Prime the fuel system.
9. Start and check for leaks.

## ADDITIONAL SERVICE INFORMATION

Additional service information is available in the Detroit Diesel *DD15 Fuel System Technician's Guide*, (DDC-SVC-MAN-0037). The next revision to this manual will include the revised information.

**DETROIT DIESEL**  
CORPORATION



13400 Outer Drive, West / Detroit, Michigan 48239-4001  
Telephone: 313-592-5000  
[www.detroitdiesel.com](http://www.detroitdiesel.com)