



DD15™ Fuel System Technician's Guide

NUMBER: 08 FSTG-6 **S.M. REF.:** 34.9.1 **ENGINE:** DD15 **DATE:** August 2008

SUBJECT: CHANGED TOOL NUMBER

PUBLICATION: DDC-SVC-MAN-0037

The tool number for the tool to remove and install the injector feed tubes has changed to J-48770 in step 5 of the removal procedure and in step 4 of the installation procedure.

34.9.1 REMOVAL OF THE FUEL RAIL

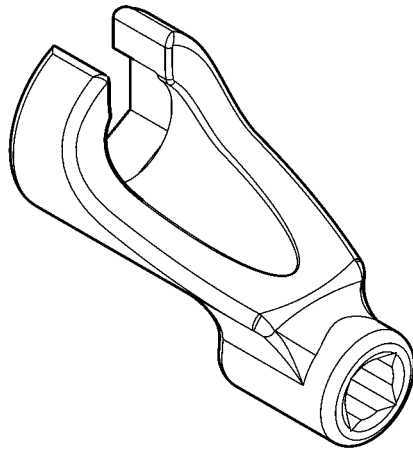
Remove as follows:

1. Steam clean the engine.
2. Disconnect the batteries.
3. Drain the fuel system.
4. Disconnect the Fuel Rail Pressure Sensor connector.

NOTE:

When removing the fuel rail feed tubes, cover the ends to ensure debris does not enter the tubes.

5. Remove injector feed tubes with tool J-48770.



d580024

**⚠ WARNING:
PERSONAL INJURY**

To prevent the escape of high pressure fuel that can penetrate skin, ensure the engine has been shut down for a minimum of 10 minutes before servicing any component within the high pressure circuit. Residual high fuel pressure may be present within the circuit.

6. Remove high pressure fuel lines from the high pressure pump and fuel rail.
7. Remove injector feed tube bracket.
8. Remove bolts and clamps connecting the fuel rail to the camshaft frame and remove fuel rail.

9. Inspect the bolts for damage and wear; replace as necessary.
10. Inspect the fuel rail for damage and wear; replace as necessary.
11. Inspect the fuel feed tubes for damage and wear; replace as necessary.
12. Inspect the rocker arm frame sealing for damage; replace as necessary.

34.9.2 INSTALLATION OF THE FUEL RAIL

Install as follows:

1. Install fuel rail to camshaft frame with three clamps and six bolts. Torque bolts to 10 N·m (7.376 lb·ft).
2. Remove covers from injector feed tubes.
3. Using tool J-48770, install injector feed tubes to fuel rail and the injectors. Torque to 40 N·m (29.5 lb·ft).
4. Install high pressure fuel lines to the fuel rail and high pressure pump with tool J-48770. Torque lines to 40 N·m (29.5 lb·ft).
5. Install pressure limiting valve fuel return line to the fuel filter module and fuel rail with tool J-48770. Torque to banjo bolt 35 N·m (25.8 lb·ft).
6. Install pressure limiting valve. Refer to section 34.9.6, “Installation/Replacement of Pressure Limiting Valve.”
7. Install and connect Fuel Rail Pressure Sensor to the Engine Harness. Refer to section 34.9.4, “Installation of the Fuel Rail Pressure Sensor.”
8. Install bracket to the high pressure fuel lines.
9. Connect the batteries.

 **WARNING:**
ENGINE EXHAUST

To avoid injury from inhaling engine exhaust, always operate the engine in a well-ventilated area. Engine exhaust is toxic.

10. Prime the fuel system, start the engine and check for leaks. Refer to section 6.5, “Fuel System Priming.”

ADDITIONAL SERVICE INFORMATION

Additional service information is available in the Detroit Diesel *DD15 Fuel System Technician's Guide*, DDC-SVC-MAN-0037. The next revision to this manual will include the revised information.

DETROIT DIESEL
CORPORATION



13400 Outer Drive, West / Detroit, Michigan 48239-4001
Telephone: 313-592-5000
www.detroitdiesel.com