



DD15™ Service Information

NUMBER: 08 DD15-6 **S.M. REF.:** 2.6 **ENGINE:** DD15 **DATE:** August 2008

SUBJECT: TOOL NUMBER CHANGE

PUBLICATION: DDC-SVC-MAN-0002

The tool number for removing and installing the high pressure fuel lines has been changed to J-48770.

2.6 FUEL RAIL

2.6.1 REMOVAL OF THE FUEL RAIL

Remove as follows:

1. Steam clean the engine. Refer to section 12.5.17.
2. Disconnect the batteries.
3. Drain the fuel system. Refer to section 12.5.13.
4. Disconnect the fuel rail pressure sensor connector from the harness.

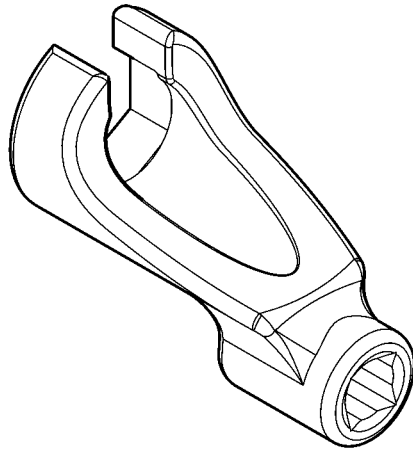
 **WARNING:**
PERSONAL INJURY

To prevent the escape of high pressure fuel that can penetrate skin, ensure the engine has been shut down for a minimum of 10 minutes before servicing any component within the high pressure circuit. Residual high fuel pressure may be present within the circuit.

NOTE:

When removing the fuel rail, the feed tubes need to be covered on the ends to ensure debris does not enter the tubes.

5. Remove injector feed tubes with tool J-48770.



d580024

6. Remove bracket from high pressure fuel lines.
7. Remove high pressure fuel lines from the high pressure pump and fuel rail with tool J-48770.
8. Remove pressure limiting valve return fuel line from fuel rail and fuel module.
9. Remove six bolts and three clamps connecting the fuel rail to the camshaft housing and remove fuel rail.

2.6.2 INSTALLATION OF THE FUEL RAIL

Install as follows:

1. Install fuel rail to camshaft housing with three clamps and six bolts. Torque bolts to 10 N·m (7.376 lb·ft).
2. Remove covers from injector feed tubes.
3. Using tool J-48770, install injector feed tubes to fuel rail and the injectors. Torque to 40 N·m (29.5 lb·ft).
4. Install high pressure fuel lines to the fuel rail and high pressure pump with tool J-48770. Torque lines to 40 N·m (29.5 lb·ft).
5. Install pressure limiting valve fuel return line to fuel filter module and fuel rail with tool J-48770. Torque to banjo bolt 35 N·m (25.81 lb·ft).
6. Install pressure limiting valve. Refer to section 2.7.

7. Install and connect Fuel Rail Pressure Sensor to engine harness. Refer to section 2.18.
8. Install bracket to high pressure fuel lines.
9. Connect the batteries.

 **WARNING:**
ENGINE EXHAUST

To avoid injury from inhaling engine exhaust, always operate the engine in a well-ventilated area. Engine exhaust is toxic.

10. Prime the fuel system, start the engine and check for leaks.

ADDITIONAL SERVICE INFORMATION

Additional service information is available in the Detroit Diesel *DD15 Workshop Manual*, DDC-SVC-MAN-0002. The next revision to this manual will include the revised information.

DETROIT DIESEL
CORPORATION



13400 Outer Drive, West / Detroit, Michigan 48239-4001
Telephone: 313-592-5000
www.detroitdiesel.com