



No.: 04 TS - 07
February 5, 2004

TO: All Distributors/Dealers and Their Branches
U.S., Canada and Mexico

ATTN.: Service Managers

FROM: Evandro Silva

SUBJECT: **MBE4000 – Oil Fill Tube and Dipstick Guide Tube**

In continuation to the release process of additional material to assist technicians servicing the MBE4000 engine in the field, we had updated the repair procedure for the oil fill tube and for the dipstick guide tube.

Attached to this letter you can find the new repair procedure for reference.

If you have any questions, please feel free to contact the Technical Support Team

Evandro Silva
MBE4000 Technical Support

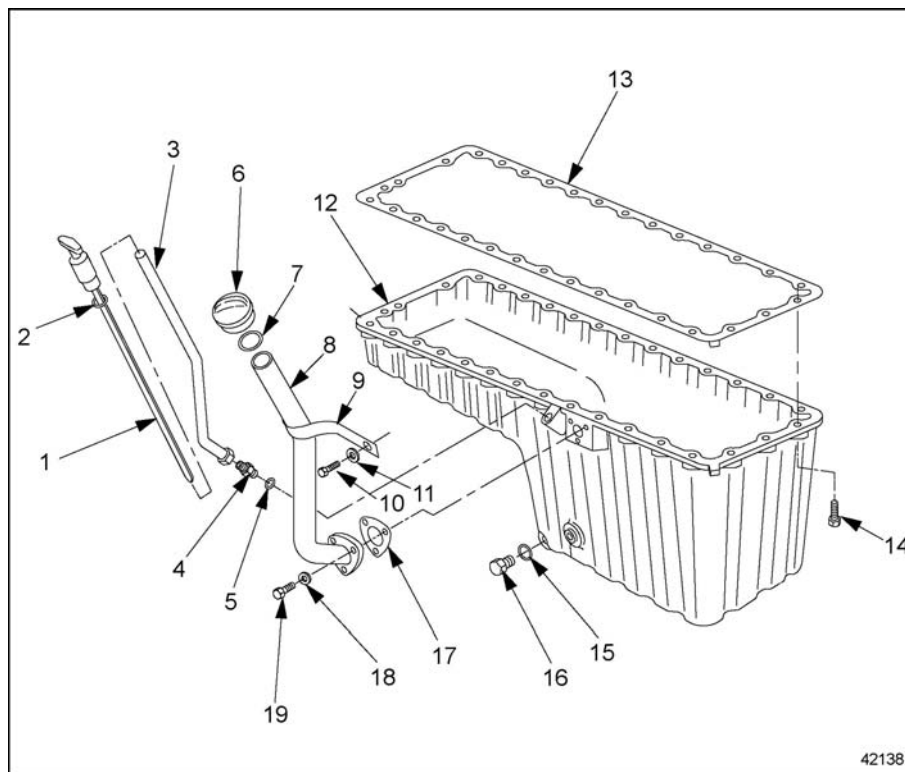


Oil Fill Tube and Dipstick Guide Tube Repair Procedure

NOTE:

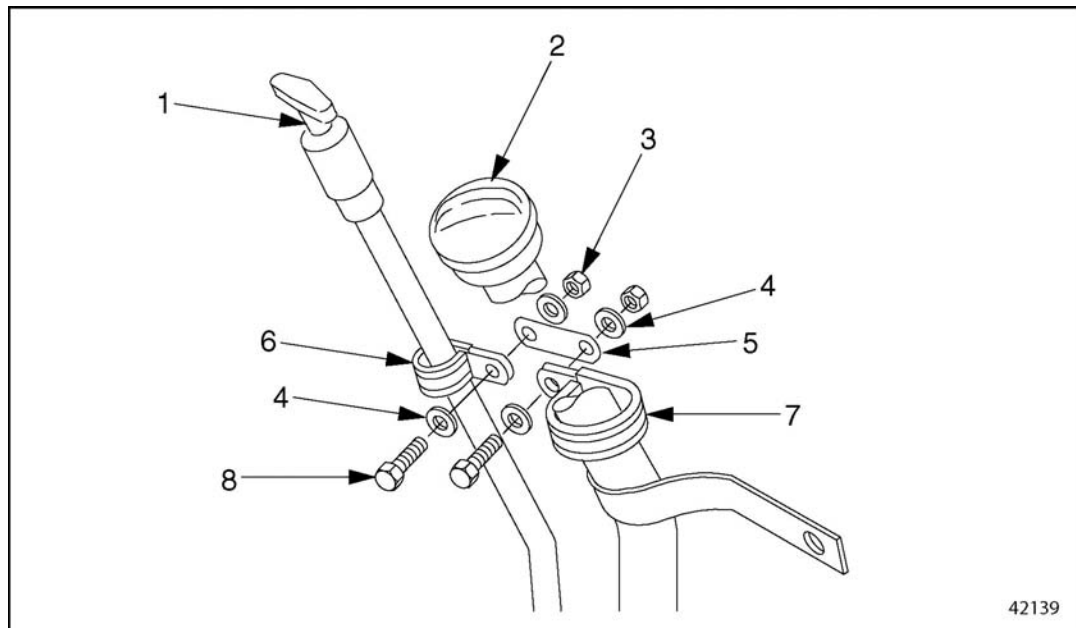
For safety precautions, refer to the MBE4000 Service Manual (6SE412) – General Information – page 15.

1. Remove the oil fill tube and dipstick guide tube as described on the MBE4000 Service Manual – Section 3.1 – Pages 3-4 and 3-5.



- | | |
|-----------------------------|-----------------------------------|
| 1. Dipstick | 11. Fill Tube Retainer Washer |
| 2. Dipstick O-ring | 12. Oil Pan |
| 3. Dipstick Guide Tube | 13. Oil Pan Gasket |
| 4. Adaptor | 14. Oil Pan Bolt (32 qty.) |
| 5. Dipstick Seal | 15. Drain Plug Seal |
| 6. Oil Fill Cap | 16. Oil Pan Drain Plug |
| 7. Oil Fill O-ring | 17. Fill Tube Gasket |
| 8. Oil Fill Tube | 18. Fill Tube Flatwasher (3 qty.) |
| 9. Oil Fill Tube Retainer | 19. Fill Tube Bolt (3 qty.) |
| 10. Fill Tube Retainer Bolt | |

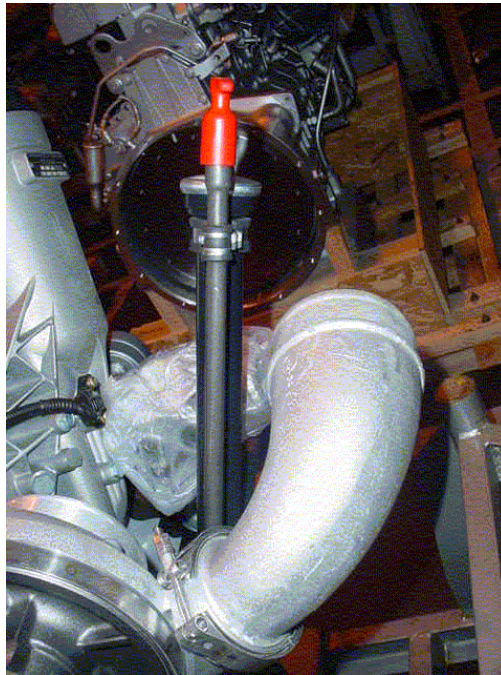
2. Connect the oil fill tube retainer to the coolant inlet pipe installing the oil fill tube retainer bolt. Tighten **10 Nm (7 lb.ft)**.
3. Tighten the oil fill tube bolts **25 Nm (18 lb.ft)**.
4. Tighten the oil fill tube retainer bolt **25 Nm (18 lb.ft)**.
5. Install the dipstick guide tube on the adaptor. Tighten **10 Nm (7 lb.ft)**.
6. Check the alignment between the dipstick guide tube and oil fill tube. They must be parallel to each other.



1. Dipstick
2. Oil Fill Tube
3. Locknut
4. Flatwasher
5. Connector
6. Dipstick Clamp
7. Oil Fill Tube Clamp
8. Bolt



7. Install dipstick clamp, oil fill camp and connector (standoff bracket). Tighten **10 Nm (7 lb.ft)**.
8. Tighten the dipstick guide tube nut **20 Nm (15 lb.ft)**.
9. Tighten the standoff bracket locknuts until firm.
10. Check the alignment between dipstick guide tube and oil fill tube.



Oil Dipstick tube and oil fill tube alignment