



No.: 04 TS - 34
June 30th, 2004

TO: All Distributors/Dealers and Their Branches
U.S., Canada and Mexico

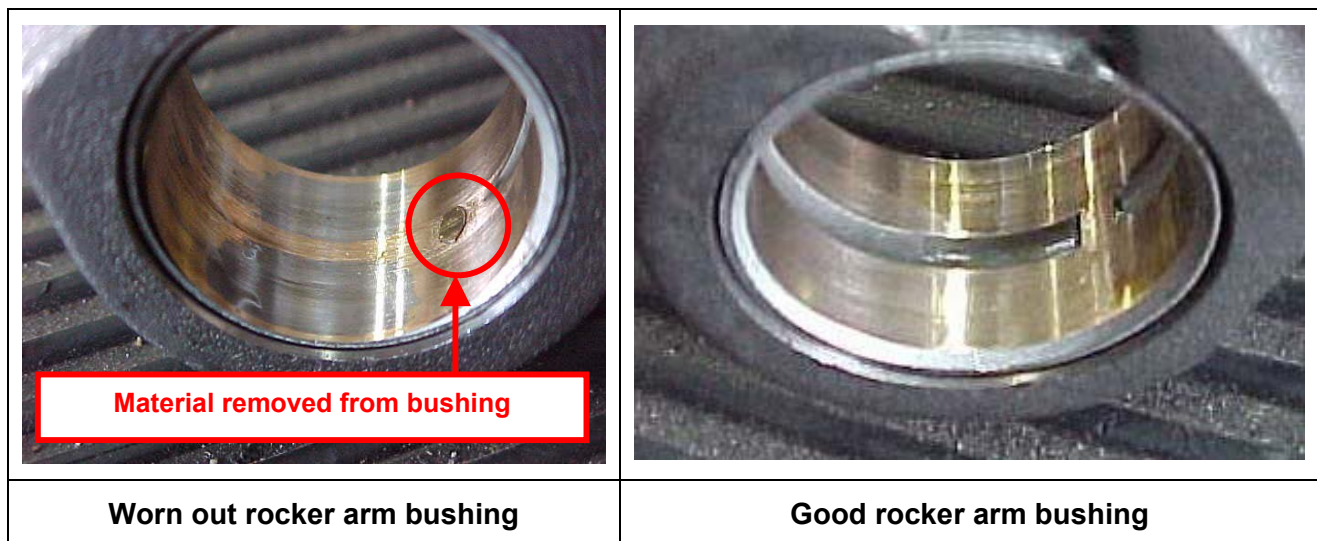
ATTN.: Service Managers

FROM: Evandro Silva

SUBJECT: **MBE4000 – Noisy Valve Train**

For MBE4000 with noisy valve train complaint, the recommended troubleshooting steps are:

1. Check the valve lash in all valve train assemblies (6 cylinder heads).
2. If the valve lash is out of spec in one of these assemblies, remove the rocker arm assembly (rocker arm pedestal + intake and exhaust rocker arm).
3. Remove both rocker arms from the pedestal and inspect them for wear on the bushing and shaft (see below pictures for reference).



4. In case of wear in the rocker arm bushing and/or shaft, replace the complete rocker arm assembly (pedestal + both rocker arms).
5. Check the valve lash after installation is completed.

The excessive lash caused by wear in the rocker arm bushing/shaft can result in intake/exhaust valve failure (broken valve). During engine repairs caused by valve failure the rocker arm assembly must be inspected using the above mentioned procedure and in case of wear in the rocker arm bushing/shaft, the rocker arm assembly must be replaced.

If you have any questions, please feel free to contact the Technical Support Team

Evandro Silva
MBE4000 Technical Support