



No.: 04 TS - 36
July 14, 2004

TO: All Distributors and Dealers – U.S. and Canada

ATTN.: Service Managers

FROM: Jack Evanoff

SUBJECT: **Obtaining Backdoor Passwords for the MBE VCU**

The ability to add password protection to VCU parameters began with VCU 13 software. Users are currently able to set one password in to protect their settings for versions 13.19 and 14.19 VCU software. When using the password function, occasions may arise when the current password cannot be accessed. In those situations there is a mechanism for unlocking the protection feature using a backdoor password.

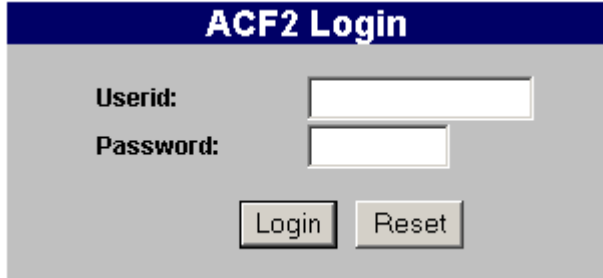
To obtain a backdoor password the user needs to generate the “A” and “B” values with the appropriate electronic tool. Detroit Diesel tools that may generate these values are: Detroit Diesel Diagnostic Link, Detroit Diesel Reprogramming Station Application, and the Minidiag hand-held tool. **Please note that these applications must be able to read the appropriate VCU software level in order to generate the “A” and “B” values.** The processes for generating these values are contained in this letter and in the individual product’s documentation. Once the values have been generated the user will need to contact an authorized party to generate the password. Those authorized to generate a password for MBE engines include:

- 1) The Customer Service Representatives of the Detroit Diesel Customer Support Center at 313-592-5800.
- 2) Technical Service Engineers supporting the MBE 900 and 4000 engines.
- 3) Authorized Detroit Diesel Distributors, who previously had access to the DDC Mainframe for generating backdoor passwords for DDEC III and IV modules. Those individuals would use the same ID and password to log into this screen.

Distributors using an Internet connection may access the screen with this link:
<http://ddcapps.detroitdiesel.com/egateway/Menu/ENGMMain.jsp>

Distributors using a frame-relay connection directly to Detroit Diesel’s network or connecting to DDC Dial may access the screen with this link:
<http://ddcweb/Engineering/egateway/Menu/ENGMMain.jsp>

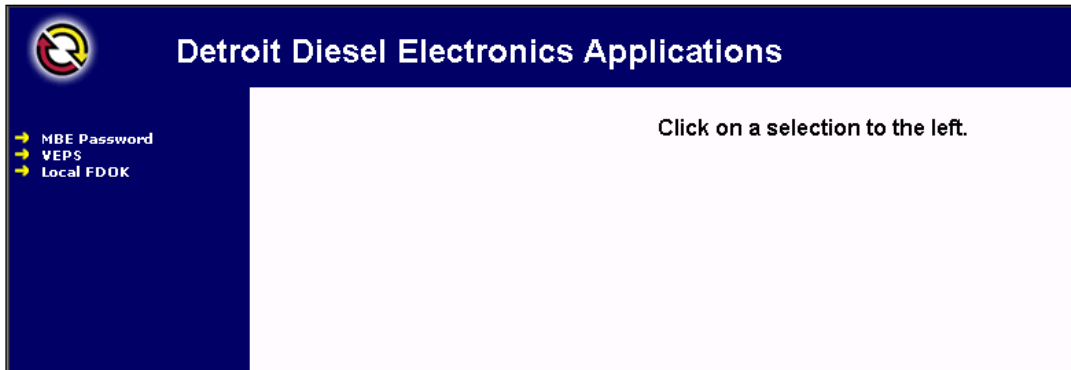
When you open the proper link for your situation, you'll be asked to submit your ID and password:



The ACF2 Login form features a dark blue header with the text "ACF2 Login" in white. Below the header, there are two input fields: "Userid:" and "Password:". Underneath these fields are two buttons: "Login" and "Reset".

Use the same ID and password you would normally use to access the mainframe for DDEC III or IV backdoor passwords.

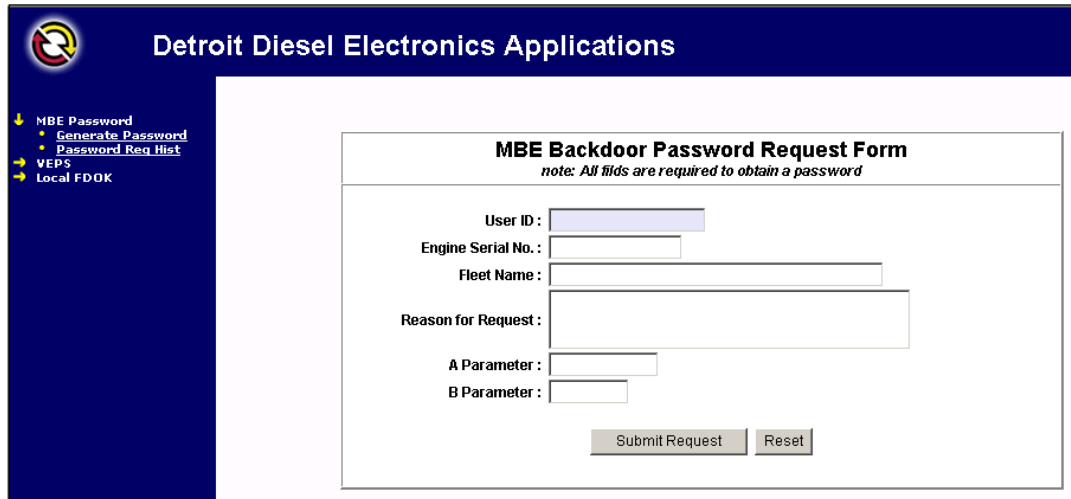
Upon successfully logging in you'll be taken to the MBE application screen:



The Detroit Diesel Electronics Applications menu has a dark blue header with a logo on the left and the text "Detroit Diesel Electronics Applications" in white. Below the header, there is a list of menu items on the left: "MBE Password", "VEPS", and "Local FDOK", each preceded by a right-pointing arrow. The main content area is white and contains the text "Click on a selection to the left."

Choose the MBE Password option.

You will need to completely enter all the fields of the information box and the proper "A" and "B" numbers generated by one of the DDC electronic tools and then submit your request. You will then get the password to unlock the VCU with your DDC Tool.



The MBE Backdoor Password Request Form has a dark blue header with a logo on the left and the text "Detroit Diesel Electronics Applications" in white. Below the header, there is a list of menu items on the left: "MBE Password", "Generate Password", "Password Req Hist", "VEPS", and "Local FDOK", each preceded by a right-pointing arrow. The main content area is white and contains the form titled "MBE Backdoor Password Request Form" with a note: "note: All fields are required to obtain a password". The form has several input fields: "User ID:", "Engine Serial No.:", "Fleet Name:", "Reason for Request:", "A Parameter:", and "B Parameter:". At the bottom of the form are two buttons: "Submit Request" and "Reset".

MBE Backdoor Password Request

Your Generated MBE password is:
2906246482

This section contains step-by-step documentation for obtaining the “A” and “B” values by using DDC electronic tools:

Using the Programming Station for MBE Backdoor Passwords

There are occasions when the existing password needs to be bypassed. It may be a case of the password being forgotten or a used vehicle has been purchased with an existing password. To get the “Backdoor” password to bypass the existing password follow these steps:

IMPORTANT NOTE: ONCE YOU HAVE BEGUN THE BACKDOOR PROCESS DO NOT TURN OFF THE IGNITION. THE NUMBERS YOU ARE GENERATING WILL CHANGE AND YOU WILL HAVE TO START OVER.

1. Write down the full 14-digit engine serial number displayed in the “Engine Configuration Screen” when you first connect with DRS. You’ll need this information later.
2. From the Calibration drop-down menu, choose the “Passwords” selection, and then choose the “Backdoor” option in the lower right side of the screen.
3. A screen will appear with 2 numbers:

Back Door Password

If you have forgotten your password there is a Back Door Password capability for the VCU. Follow the steps below to obtain the password.

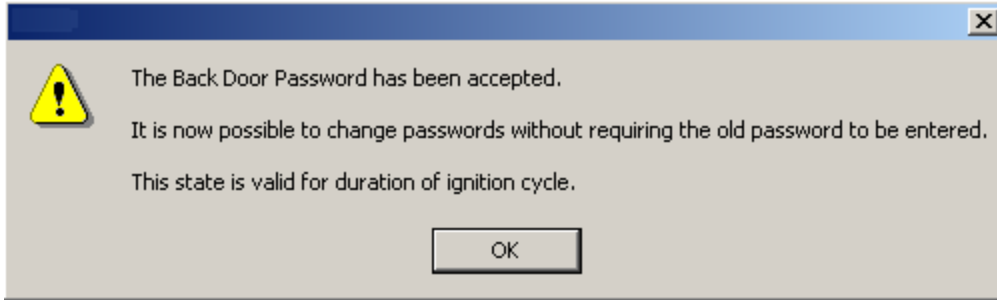
A: 1092355331 B: 64483

1. Record the numbers in the boxes above.
2. Do not turn off the ignition; the password you obtain will only be good for this ignition cycle.
3. Contact your local Detroit Diesel distributor's service department to get the Back Door Password.

Enter Back Door Password to Unlock

Submit Cancel

4. You now need to contact your local Detroit Diesel distributor or Detroit Diesel MBE Technical Service person with the complete engine serial number, the 2 numbers in the Backdoor password box. They will be able to provide a number to place in the section for unlocking the module.
5. When the password has been entered, click on the “Submit” box and you should see this message:

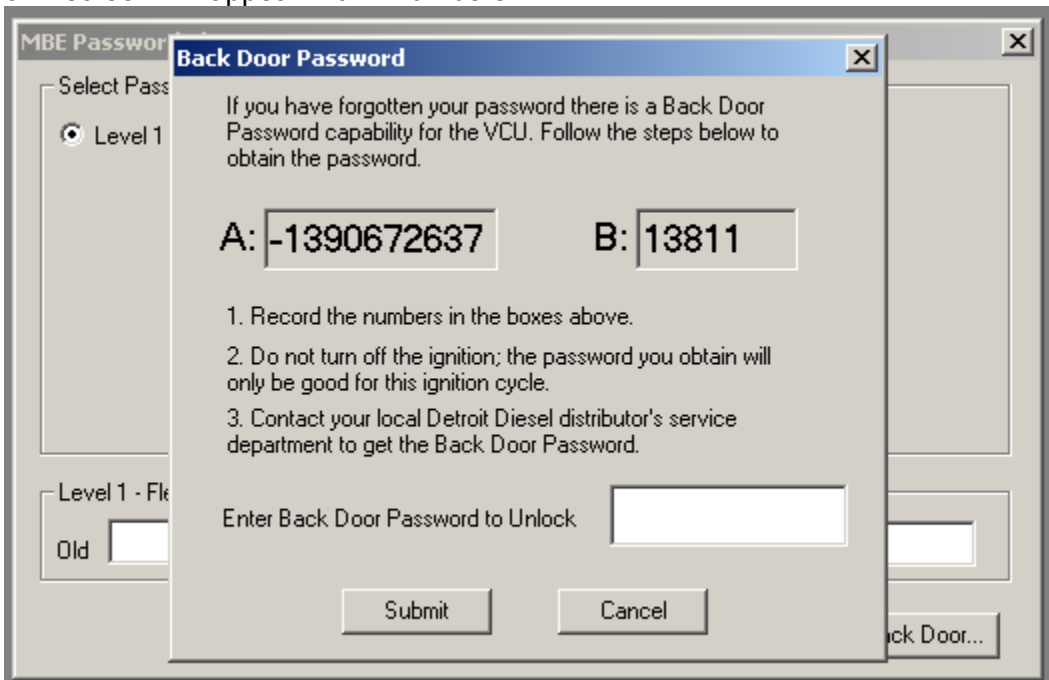


Using the Diagnostic Link's MBE Backdoor Password Function

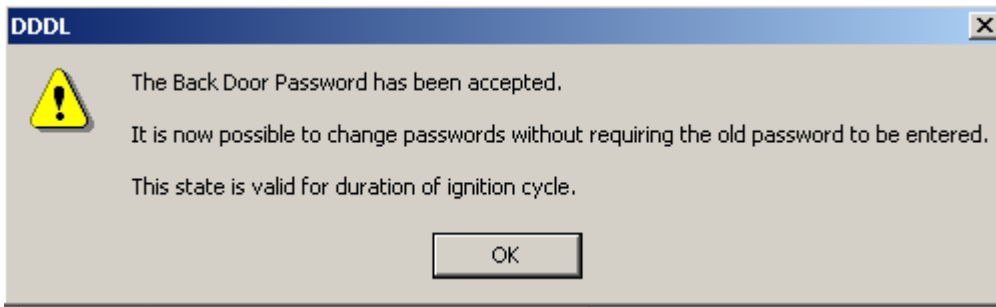
There are occasions when the existing password needs to be bypassed. It may be a case of the password being forgotten or a used vehicle has been purchased with an existing password. To get the "Backdoor" password to bypass the existing password follow these steps:

IMPORTANT NOTE: ONCE YOU HAVE BEGUN THE BACKDOOR PROCESS DO NOT TURN OFF THE IGNITION. THE NUMBERS YOU ARE GENERATING WILL CHANGE AND YOU WILL HAVE TO START OVER.

1. Write down the full 14-digit engine serial number displayed in the "Engine Configuration Screen" when you first connect with DDDL. You'll need this information later.
2. From the Calibration drop-down menu, choose the "Passwords" selection, and then choose the "Backdoor" option in the lower right side of the screen.
3. A screen will appear with 2 numbers:



4. You now need to contact your local Detroit Diesel distributor or Detroit Diesel MBE Technical Service person with the complete engine serial number, the 2 numbers in the Backdoor password box. They will be able to provide a number to place in the section for unlocking the module.
5. When the password has been entered, click on the "Submit" box and you should see the following message:



How to Use All the Minidiag MBE Password Routines (including the backdoor function)

Using VCU Password Protection Routines – Please read the instructions below carefully before activating the VCU password function.

I. To Enable VCU Password Protection

The password protection feature is a routine that must be enabled from the routine list. In this section we will store a specific password.

Important note: When setting the password please keep these items in mind: 1. The password is made up of numeric characters only letters may not be used. 2. The password may contain a maximum of 8 digits.

To set a password and enable the function:

- a. Screen 1 Select #2 – ECU Detection
- b. Screen 2 Select #2 - J1587
- c. Screen 3 Select #4-Routines
- d. Screen 4 Scroll down the list and select 118 – activate protection and press the OK key
- e. Screen 5 This screen says, “activate the protection function”. Press the OK key
- f. Screen 6 On the next screen you’ll see a value of 1 entered as the protection routine number. Press the OK key.
- g. Screen 7 Please enter you password on this screen following the rules listed above. The current value of “0” renders the routine disabled. Once the password is set press the OK key.
- h. Screen 8 The next screen will inform you that the password has been set. When you press the OK key you’ll be returned to the routine list.
- i. At this point you will need to turn off ignition for 10 seconds. Note: You must do this operation manually. You will not receive an on-screen prompt. The password is now set. Parameters may be viewed but not set beginning at the **next** ignition-on cycle.

II. Unlocking a password protected VCU – Once the password routine is activated you’ll need to follow these steps to change VCU parameter settings:

- a. Screen 1 Select #2 – ECU Detection
- b. Screen 2 Select #2 - J1587
- c. Screen 3 Select #4 - Routines
- d. Screen 4 Scroll down the list and select 119 – Enable Access. Press the OK key
- e. Screen 5 Enter protection routine number – use 1 to unlock all parameters in v13.xx. Press the OK key
- f. Screen 6 Enter the proper password and press the OK key
- g. Screen 7 If the proper password has been entered you will receive a message saying, “Access Enabled”. At this point parameters may now be changed using normal procedures with the Minidiag. The module will automatically lock when ignition is turned off.

III. Using the Backdoor Password Routine – From time to time situations will occur where access to a vehicle password may be necessary but the user may not know the stored password. This routine enables the user to unlock the module by contacting a third party (your local distributor or DDC technical support) and providing the proper information. To access the backdoor password follow these steps:

- a. Screen 1 Select #2 – ECU Detection
- b. Screen 2 Select #2 - J1587
- c. Screen 3 Select #4 - Routines
- d. Screen 4 Scroll down the list and select 121– backdoor function. Press the OK key.
- e. Screen 5 A screen will appear with two numbers identified as factors A and B. Carefully record the values of each number. **Important note: At no point in the process should you turn off the ignition once you've begun the backdoor routine. The values for the A and B factors change with every switch of the ignition cycle.** Please call the appropriate number of either your local distributor or DDC technical support. You'll be asked to provide some specific information regarding the circumstances of backdoor request prior to receiving the password.
- f. Once you've received the backdoor password, press the OK key and you'll be prompted to enter the password. Enter it and press OK again. Entry is now enabled. Once access is enabled it is recommended that a new password be set.

Jack Evanoff
Technical Service