



No.: 07 TS – 30Rev
June 25, 2007

TO: Service Locations

FROM: Technical Service Development

SUBJECT: **Constant Throttle Valve Installation for Non-threaded Centrifuge Housing for EPA04 MBE 900**

ISSUE

The current service Oil Centrifuge Housing is no longer supplied with a threaded hole for Constant Throttle Valve (CTV) solenoid or cover plate. The parts kit listed below has a centrifuge assembly and the self tapping bolts, required for both the solenoid valve and the cover plate.

REQUIRED MATERIAL

Kit P/N: 23537839

Kit Contents	Qty.	Description
A9061800297	1	Oil Centrifuge Assembly
000000001535	2	M8 x 65 Bolts, self-tapping (CTV application)
000000001140	2	M8 x 24 Bolts, self-tapping (Non-CTV application)
18SP641	1	Installation Instructions

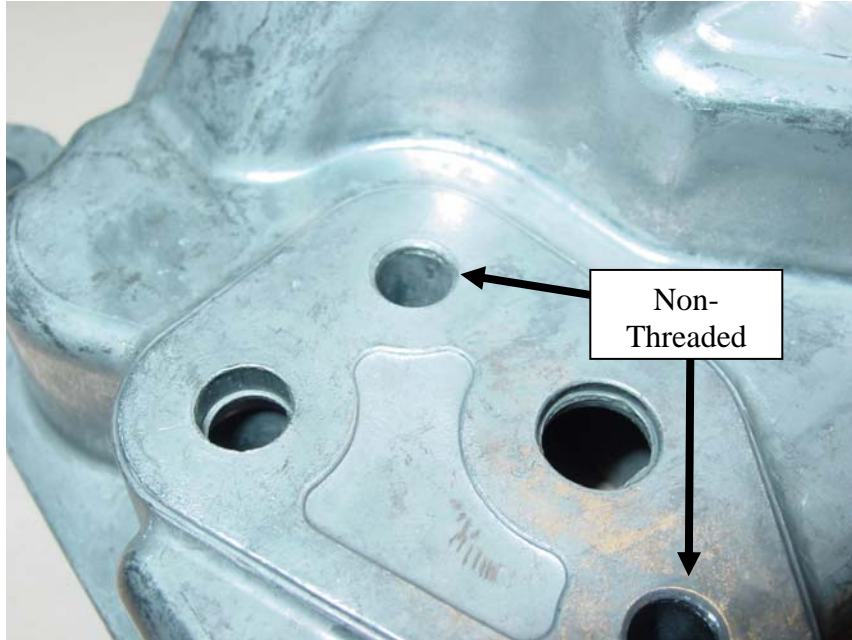
CTV Cover Plate available separately, P/N: 9060110032.



Self tapping bolt with use of CTV solenoid 2 (P/N: 000000001535)



Self tapping bolt for CTV Cover plate 2 (P/N: 000000001140)



Oil Centrifuge Oil Housing Non tapped for CTV (P/N: A9061800297)

CONTACT INFORMATION

Please contact the Detroit Diesel Customer Support Center at 313-592-5800 if you have any questions.