



No.: 07 TS-43
August 2, 2007

TO: Service Locations

FROM: Technical Support Development

SUBJECT: **Release of DDDL 7.0 Service Pack 8 Software**

ISSUE:

The new version of DDDL 7.0 (SP8) software is required to read and diagnose vehicles with the latest MCM and CPC software. **This is a mandatory update**. If you do not have this version of DDDL 7.0, you are required to access the DDCSN website and download it.

GENERAL INFORMATION

The latest DDDL 7.0 SP8 update is now available and can be downloaded to your computer using the following instructions.

DDDL 7.0 SP8 features:

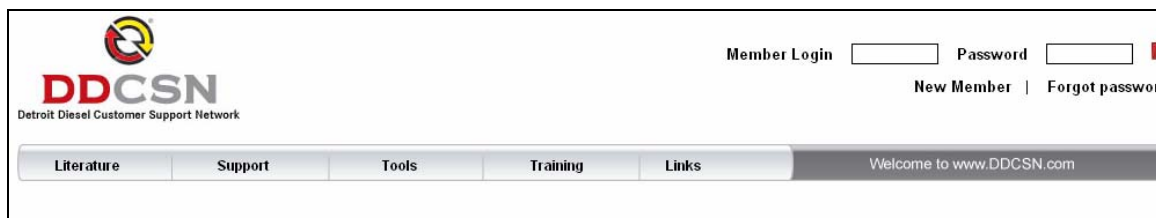
- Minor modifications to instrumentation panels
- Updated .cbf files for MCM 8.4.1 and CPC 2.01 software versions

Detroit Diesel Diagnostic Link 7.0 and DDEC Reports Software Upgrade

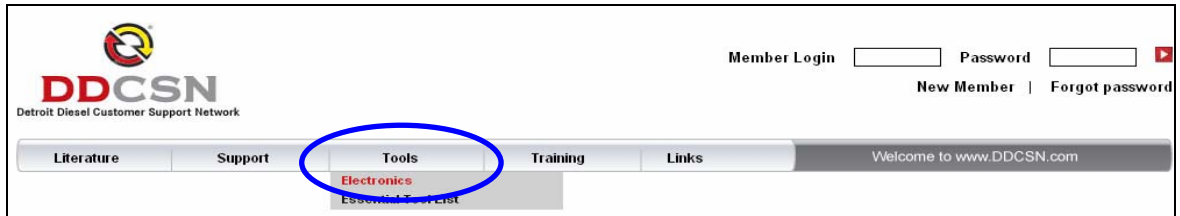
IMPORTANT NOTE: There are two parts to the DDDL upgrade. Please follow the instructions carefully to ensure a successful and complete update to your DDDL 7.0 software.

Part I – Web Download

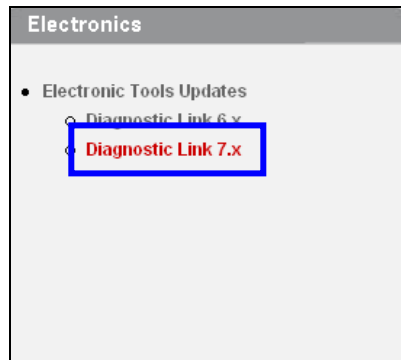
1. Go to the following Website – **DDCSN.com**



- Click on **Tools** and select **Electronics** from the dropdown menu.



- From the left panel, click on **Electronic Tools Updates** and **Diagnostic Link 7.X**.



- Under New Software Update Information, you will find two links related to this release:
 - DDDL 7.0 (SP8) software – a self-extracting file containing the updated software and .cbf files.
 - DDDL 7.0 Update readme – readme file for this version of DDDL.

2007 Electronic Tools Information

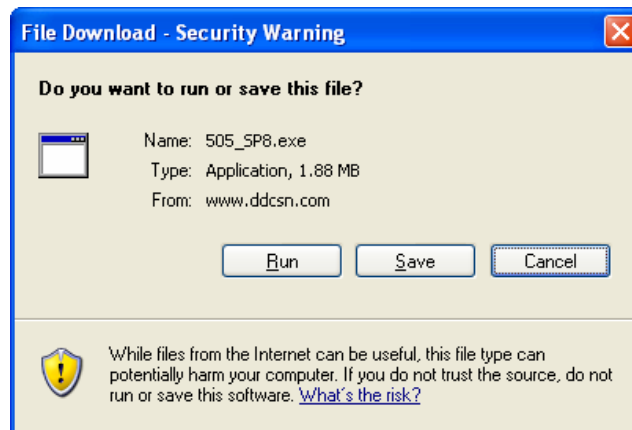
This screen will be your source for the latest file and information updates to your Detroit Diesel Diagnostic Link 7.0 software.

New Software Update Information

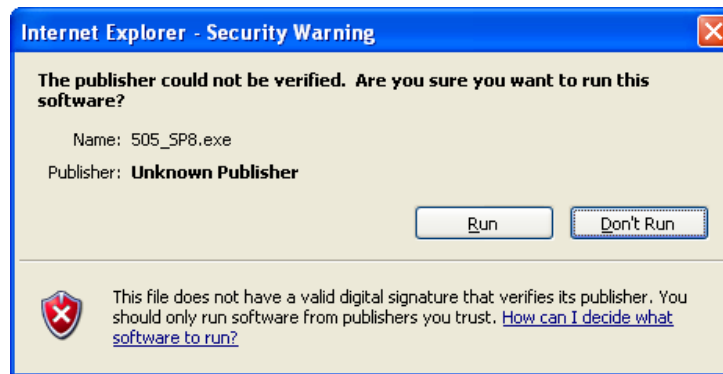
An update to DDDL 7.0 is required to support the new version of MCM (V8.3 and 60.X) and CPC (2.0) software. To download the executable update file click on this link: [DDDL 7.0 \(SP8\) software update](#). In addition, you will need the latest version of DDEC Reports to read this new software. Click on the following link to download [DDEC Reports](#). For a more complete details on what is included in this update, please click on the following link. [DDDL SP8 readme](#).

- As always, you are encouraged to browse the **readme** file before downloading any software.

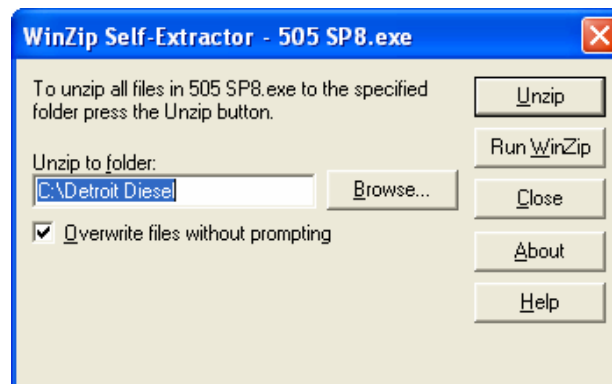
- To download the update, click on the **DDDL 7.0 (SP8) software update** link to display the following Security Warning Screen.



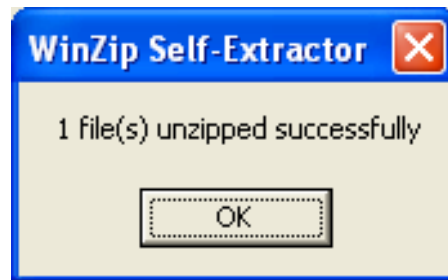
- Select **Run** or **OPEN** to continue.
- Select **Run** or **OPEN** again from the next install screen.



- Click on the **Unzip** button to run the extraction script.
NOTE: Make sure the box labeled **Overwrite files without prompting** is checked.



11. The extraction script is complete when the **Self-Extractor** screen is displayed. Close the WinZip Self-Extractor.



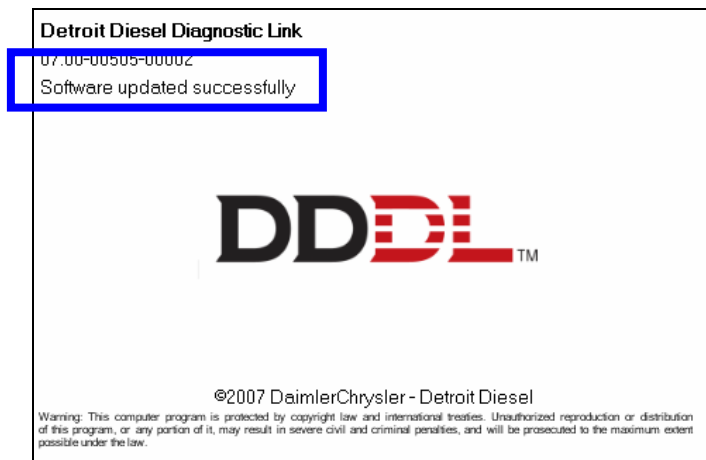
Part II – Software Installation

The second part of this upgrade will step you through the installation of the DDDL 7.0 software. Please read and follow the instructions carefully.

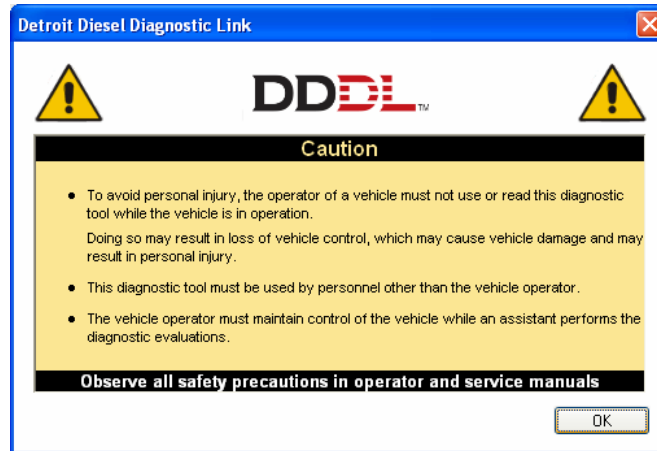
1. To begin the installation, open DDDL 7.0 either by double-clicking on your desktop icon (shown here) or through your Start menu. (**Start, Programs, Detroit Diesel, Diagnostic Link, DDDL**)



2. You will notice a number of update scripts flashing across the top of this splash page. When the update is complete, the splash screen will display the following message, **Software updated successfully.**

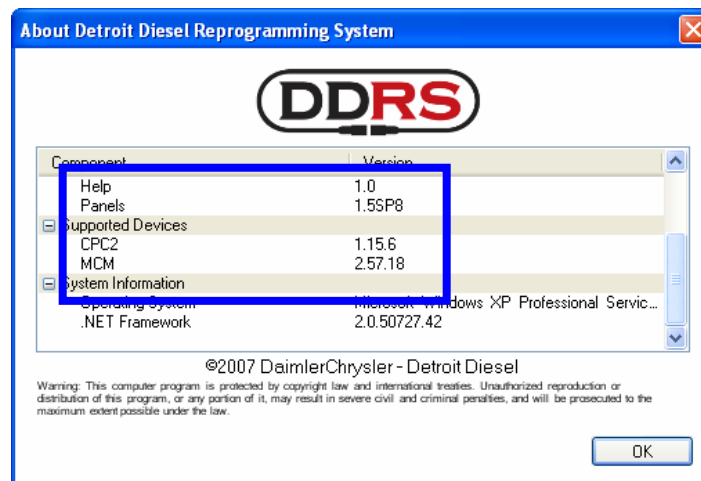


3. The standard Welcome screen will be displayed.



4. Close this and recheck your **About...** screen for updated .CBF files. You should have the following:

Panels	1.5SP8
CPC2	1.15.6
MCM	2.57.18



CONTACT INFORMATION

Please contact the Detroit Diesel Customer Support Center at 313-592-5800 if you have any questions.