



No.: 07 TS-44
August 18, 2007

TO: Service Locations

FROM: Technical Support Development

SUBJECT: **Release of DDEC® Reports 6.42**

ISSUE

A new version of DDEC Reports is now available on the Diagnostic Link Web Page. The DDEC Reports 6.42 software version includes the following:

- Correction for parked regeneration counts.
- Added firm brake counts.

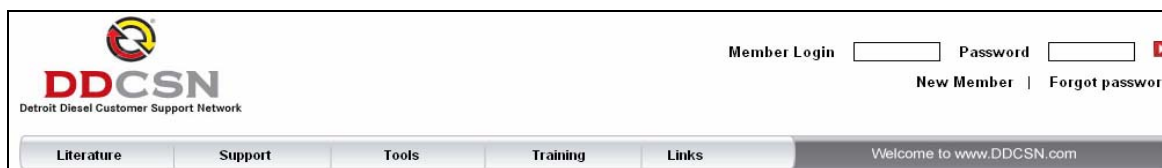
REQUIRED ACTION

NOTE: In order to ensure a successful upgrade, you must have DDEC Reports 6.4 already loaded on your PC. To check your current version, open DDEC Reports, close the Welcome Screen, and select **Help, About DDEC Reports**. The version listed should read 6.41.

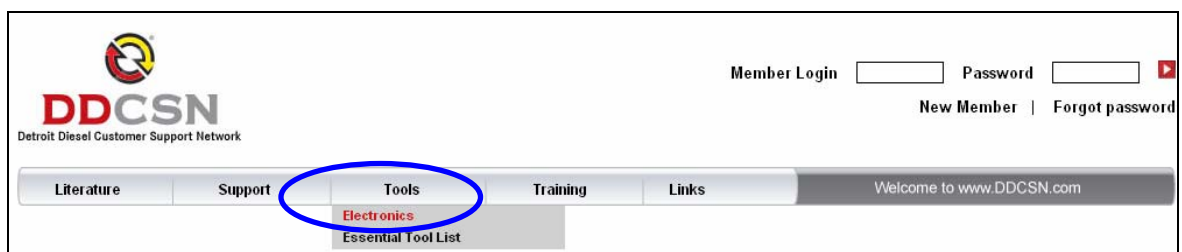


Instructions to download DDEC Reports 6.42

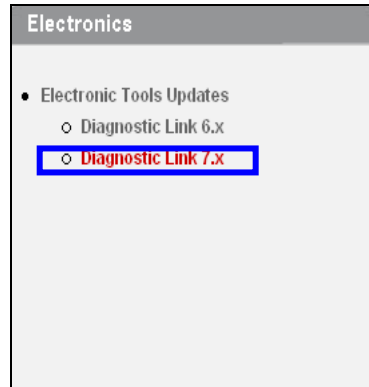
1. Go to the following Website – **DDCSN.com**



2. Click on **Tools** and select **Electronics** from the dropdown menu.



- From the left panel, click on **Electronic Tools Updates** and **Diagnostic Link 7.X**.

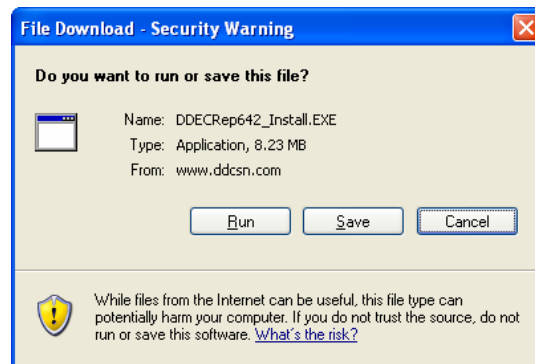


- Under New Software Update Information, you will find the link **DDEC Reports** for this release.

New Software Update Information

An update to DDDL 7.0 is required to support the new version of MCM (v8.4.1 and 60.X) and CPC (2.01) software. To download the executable update file click on this link: [DDDL 7.0 \(SP8\) software update](#). In addition, you will need the latest version of DDEC Reports to read this new software. Click on the following link to download **DDEC Reports**. For a more complete details on what is included in this update, please click on the following link [DDDL SP8 readme](#).

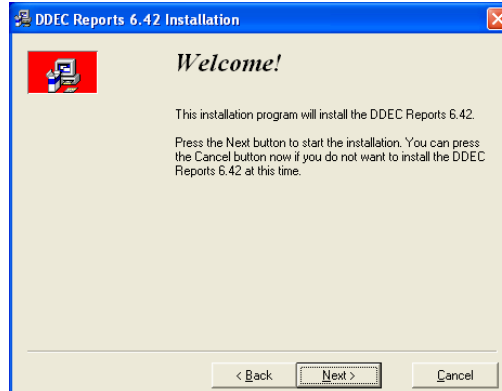
- To download the update, click on the **DDEC Reports** link to display the following Security Warning Screen. Select **Run**.



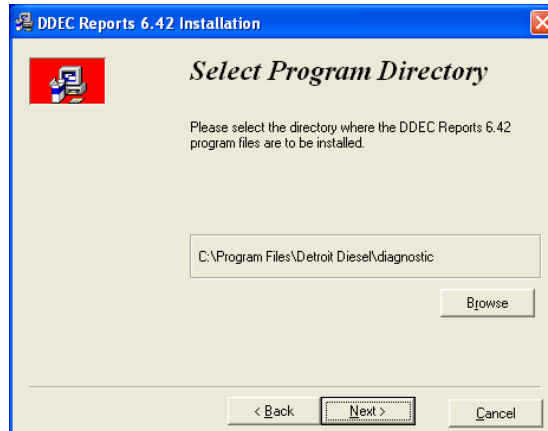
- Select **Run** again from the next install screen.



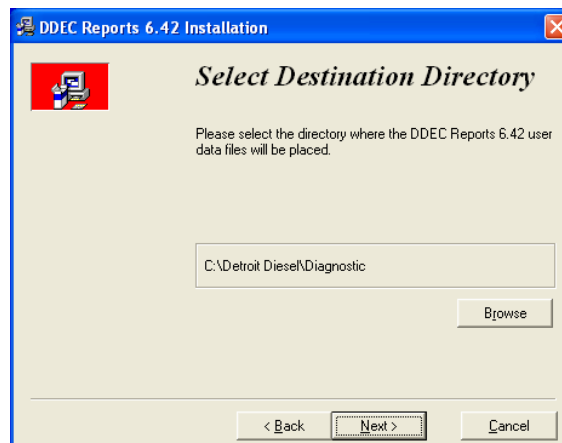
- At the Welcome screen, select **Next** to begin the installation.



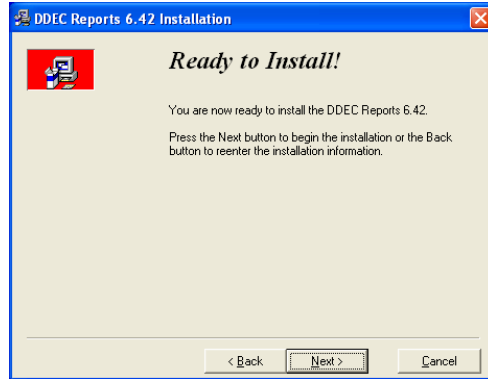
- Select **Next** to continue.



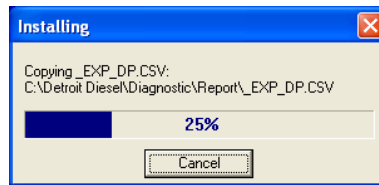
- Select **Next** to continue.



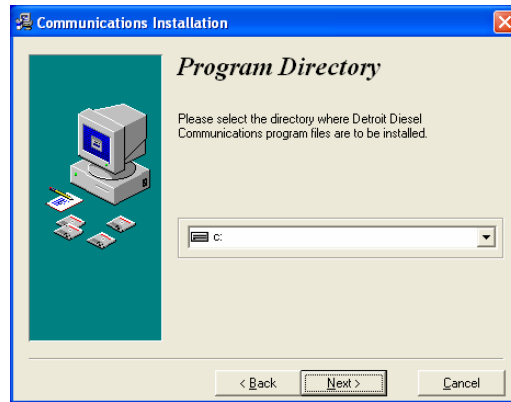
10. Select **Next** to continue.



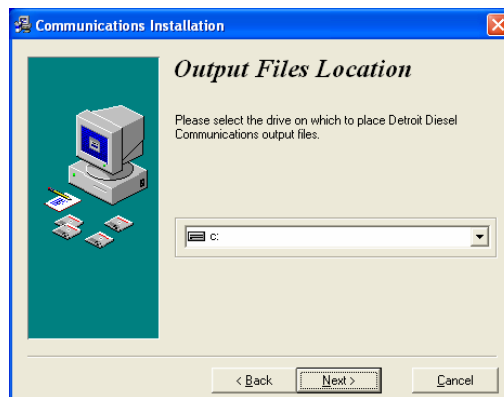
11. The install script is now copying program files to your hard drive.



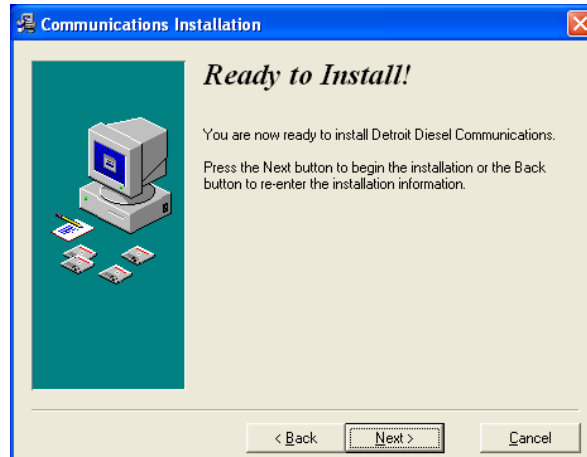
12. Select **Next** at the **Program Directory** screen.



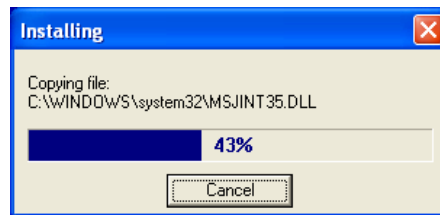
13. Select **Next** to continue.



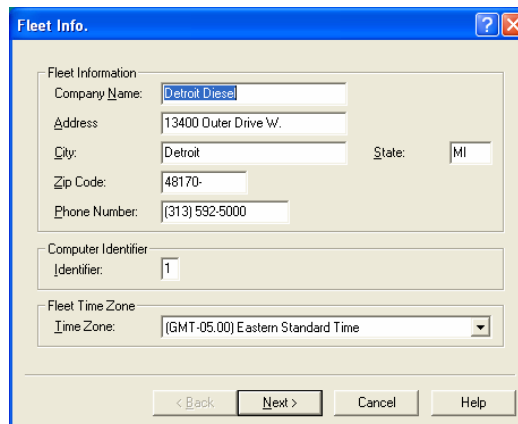
14. Select **Next** to continue.



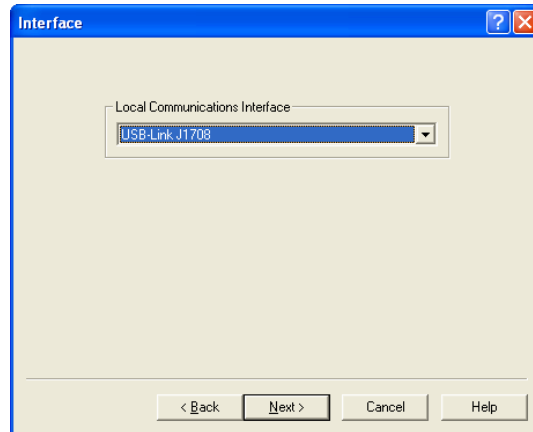
15. The install script will continue copying program files to your hard drive.



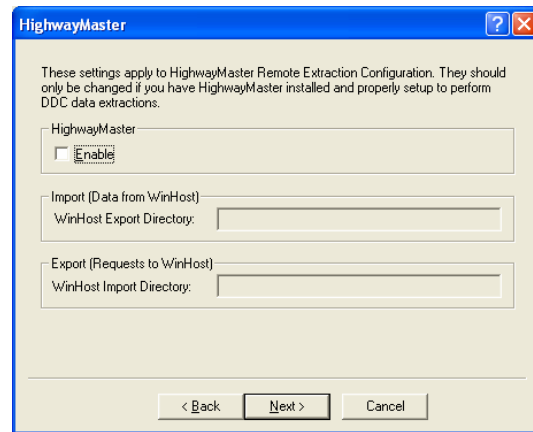
16. You are now prompted to complete the Fleet Information screen. Although you are encouraged to complete this screen in total, the only field that is required to continue with the installation is the **Computer Identifier**.



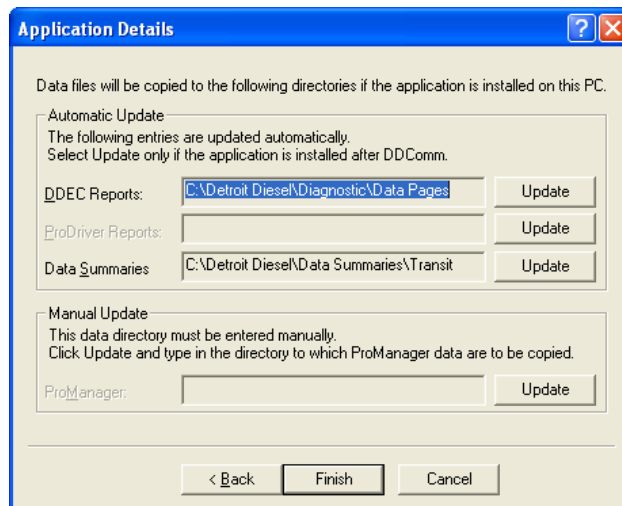
17. Select your Interface on the next screen. Select Next to continue.



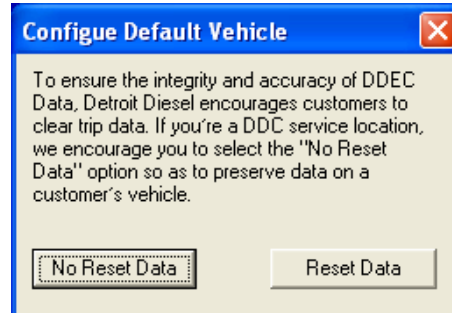
18. Select **Next** to continue. (Do not check the Enable box).



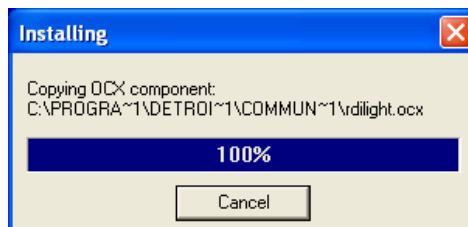
19. Select **Finish** to continue.



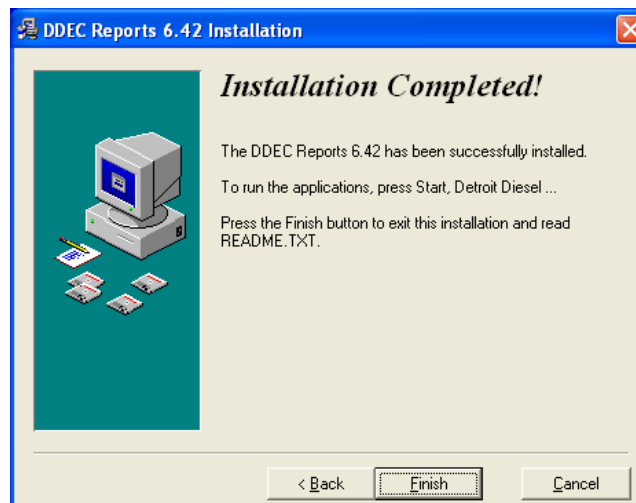
20. **Configure Default Vehicle** is a new screen within this installation script. By selecting **Reset Data**, each time you extract from a vehicle, the Trip information will be stored in a data file and cleared from the ECU. Read the text on this screen before continuing.



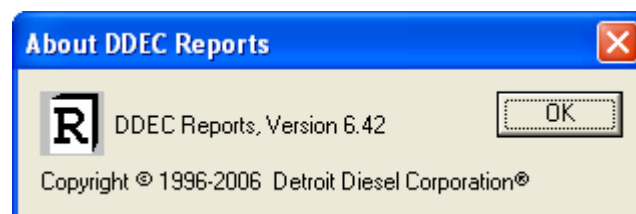
21. The installation will continue.



22. This screen will be displayed when the DDEC Reports installation is complete.



Your DDEC Reports software is now updated with the latest production software. To verify the update, open DDEC Reports, close the Welcome Screen, and select **Help, About DDEC Reports**. The version listed should read 6.42.



.

CONTACT INFORMATION

If you have any further questions regarding these software upgrades, please contact our Customer Support Center at 313-592-5800.