



No.: 07 TS-57  
November 7, 2007

TO: Service Locations, Global Dealers(On-Highway)

FROM: Technical Support Development

SUBJECT: **EPA07 MBE 900 SRA2 Actuator Adjustment**

## ISSUE

The Electronic Engine Brake Actuator (SRA2) causes concerns of Low Power with fault code 615/14. These conditions can be corrected by adjusting the SRA2 actuator linkage.

## REQUIRED MATERIAL

No special tools required.

## SERVICE PROCEDURE

1. Turn ignition switch off.
2. Remove linkage from actuator lever.
3. The exhaust flap must be in the fully opened position, with the lever in a downward position (see Figure 1).

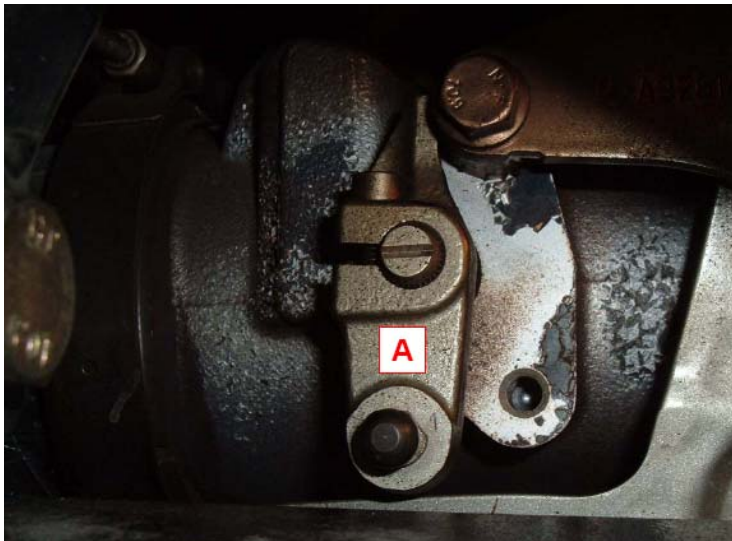


Figure 1 – Exhaust Flap Lever

4. Adjust the ball socket so it slides on the actuator ball. Remove rod and extend the ball socket three turns.

5. Align the flats of the ball sockets with the actuator and brake flap lever arms (see Figure 2).

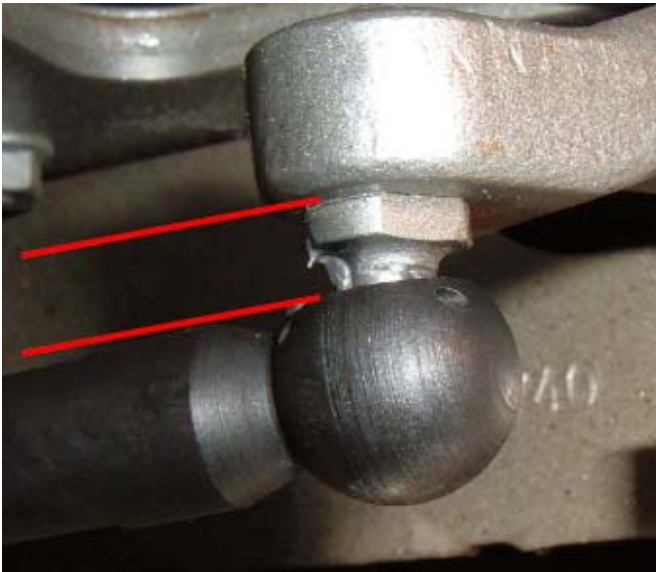


Figure 2 – Ball Socket and Actuator Arm Alignment

6. Tighten the locknut against the socket. Tighten to  $12.5 \pm 1$  N·m (9 lb·ft).
7. Check for adequate clearance between the operating rod and the bracket (see Figure 3).

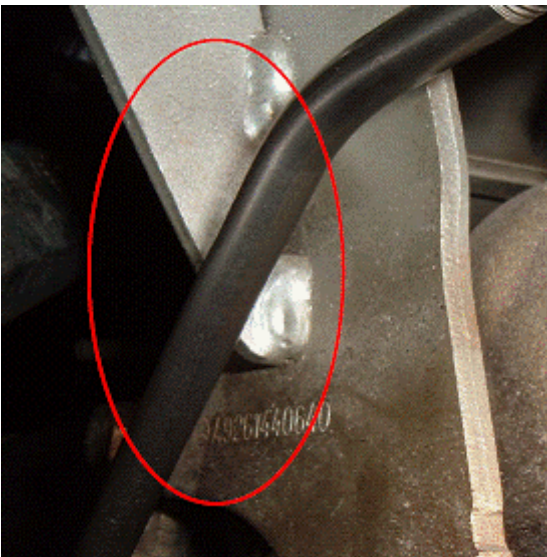


Figure 3 – Clearance Check

8. Install the ball socket onto the actuator arm.
9. The MCM software will re-calibrate the set points of the actuator with the first key-on cycle.

#### **CONTACT INFORMATION**

Please contact the Detroit Diesel Customer Support Center at 313-592-5800 or email [csc@detroitdiesel.com](mailto:csc@detroitdiesel.com) if you have any questions.