

# DETROIT DIESEL



## Installation Instructions

### 18SP610 – MBE4000 Engine Fuel System Priming Kits

#### KIT DESCRIPTION

Kit P/N: 23535320 contains the necessary parts for installing the fuel priming nipple valve fitting on MBE4000 EGR (EPA04) and non-EGR (EPA98) engines installed in all Freightliner trucks (except M2 chassis).

Kit P/N: 23535927 contains the necessary parts for installing the fuel priming nipple valve fitting on MBE4000 non-EGR (EPA98) engines installed in Sterling, Western Star, and Freightliner trucks (M2 chassis only).

#### **NOTE:**

The diesel fuel system primer tool (J-47912) is not included in this kit but is required to complete the priming procedure.

#### KIT CONTENTS


The fuel priming kits contain the following parts listed in Table 1.

P/N:	Description	Freightliner Kit P/N: 23535320 (qty.)	Sterling/Western Star Kit P/N: 23535927 (qty.)
0009975501	Banjo Bolt	1	—
0029970071	Banjo Fitting	—	1
007603016102	Sealing Washer	2	3
0000789049	Priming Nipple Valve	1	1
0001542785	Dust Cover	1	1
915047012203	Dual Hollow Screw, M16 x 1.5	—	1
18SP610	Installation Instructions	1	1

Table 1 MBE4000 Fuel System Priming Kits

#### INSTALLATION PROCEDURE FOR KIT (P/N: 23535320)

Install the fuel system priming kit as follows (see Figure 1):

 <b>WARNING:</b> <b>PERSONAL INJURY</b>
<b>To avoid injury from penetrating fluids, do not put your hands in front of fluid under pressure. Fluids under pressure can penetrate skin and clothing.</b>

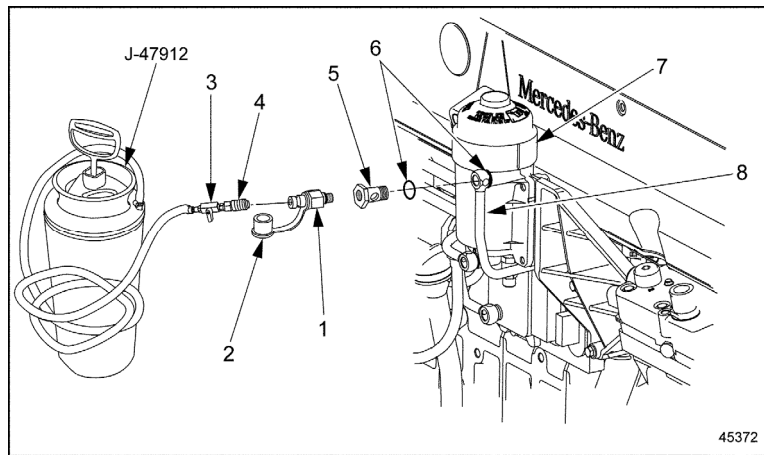
**! WARNING:**  
**FIRE**

**To avoid injury from fire, keep all potential ignition sources away from diesel fuel, including open flames, sparks, and electrical resistance heating elements. Do not smoke when refueling.**

1. Remove the upper banjo bolt and two sealing washers from the secondary fuel filter at the fuel supply line. Discard banjo bolt and sealing washers.
2. Install banjo bolt (P/N: 0009975501) and two new sealing washers (P/N: 007603016102) at the fuel supply line. Torque banjo bolt to 40-50 N·m (30-37 lb·ft).
3. Install the priming nipple into the banjo bolt and torque to 15-16 N·m (11-12 lb·ft).

**NOTE:**

Priming nipple valve comes assembled with a small recessed O-ring on the valve.



- |                         |                          |
|-------------------------|--------------------------|
| 1. Priming Nipple Valve | 5. Banjo Bolt            |
| 2. Dust Cover           | 6. Sealing Washers       |
| 3. Valve                | 7. Secondary Fuel Filter |
| 4. Coupler              | 8. Fuel Supply Line      |

**Figure 1 MBE4000 Fuel Filter Priming Kit (P/N: 23535320)**

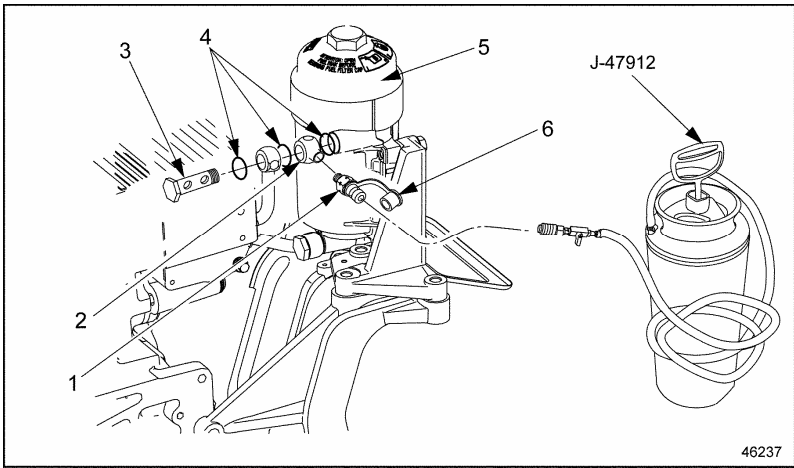
**INSTALLATION PROCEDURE FOR KIT (P/N: 23535927)**

Install the fuel system priming kit as follows (see Figure 2):

1. Remove the upper banjo bolt and two sealing washers from the secondary fuel filter at the fuel supply line. Discard banjo bolt and sealing washers.
2. Install new banjo fitting (P/N: 0029970071) and three new sealing washers (P/N: 007603016102) at the fuel supply line using the dual hollow screw (P/N: 915047012203). Torque dual hollow screw to 40-50 N·m (30-37 lb·ft).
3. Install the priming nipple into the banjo fitting and torque to 15-16 N·m (11-12 lb·ft).

**NOTE:**

Priming nipple valve comes assembled with a small recessed O-ring on the valve.



- |                                  |                          |
|----------------------------------|--------------------------|
| 1. Priming Nipple Valve          | 4. Sealing Washer (3)    |
| 2. Banjo Fitting                 | 5. Secondary Fuel Filter |
| 3. Dual Hollow Screw (M16 x 1.5) | 6. Dust Cover            |

**Figure 2 MBE4000 Fuel Filter Priming Kit (P/N: 23535927)**



13400 Outer Drive, West  
 Detroit, MI 48239-4001  
 Telephone: 313.592.5000  
[www.detroitdiesel.com](http://www.detroitdiesel.com)

Copyright© 2005 Detroit Diesel Corporation. Detroit Diesel®, DDC®, and the spinning arrows design are registered trademarks of Detroit Diesel Corporation. All other trademarks are the property of their respective owners.  
**18SP610 0510 As technical advances continue, specifications will change. All rights reserved. Printed in U.S.A.**