



No.: 08 TS-10
May 21, 2008

TO: Service Locations

FROM: Technical Support Development

SUBJECT: **Repair Facility Input on DD15 Engine Issues**

ISSUE

In an effort to effectively respond to any emerging issues involving the new DD15 engine, Detroit Diesel and Freightliner LLC must rely on communication from service facilities. This communication will help early detection and resolution of engine issues in the field. It will ultimately help to insure successful support of the DD15 engine.

The Detroit Diesel and Freightliner technical assistance lines are available for help in diagnosing any engine or vehicle issue; however, service locations are asked to contact the applicable technical assistance line whenever performing repairs on one of the new DD15 engines. This input is very important and will be instrumental in identifying the root cause as quickly as possible.

REQUIRED ACTION

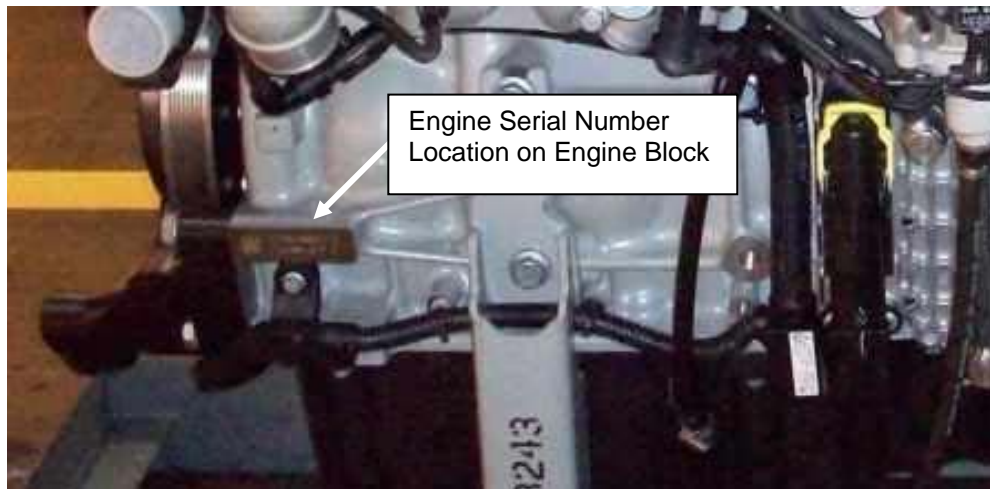
If you have performed a repair on a DD15 engine, but do not need actual consultation, please call and leave a message with the following information:

- Your name, phone number, company name and location
- Engine Serial Number
- The last six digits of the VIN
- A description of the issue, and if applicable, the solution

The technical assistance numbers are as follows:

- Detroit Diesel Customer Support Center - 800-445-1980 (for all DD15 engines and engine components)
- Freightliner Technical Help Line – 888-587-6753 (for any Freightliner, Sterling or Western Star vehicle interface issue)

How to identify a DD15 engine:



The Engine Serial Number will be 14 digits long and start with 47290.

CONTACT INFORMATION

Please contact the Detroit Diesel Customer Support Center at 313-592-5800 or email csc@detroitdiesel.com if you have any questions.