

WinEmmon Installation Instructions

Version 2.5.16

This guide describes the installation of the WinEmmon EMDEC monitoring program and the USB driver needed for the USB translator box.

The USB translator box will work with any version of WinEmmon > version 2.1.0.

The USB driver maps the USB translator box onto one of your computer's available Comm ports. After the drivers are installed, and you have found the mapped Comm port, WinEmmon will let you select that Comm port and then remember it for subsequent use.

You can either run the install from the CD or copy the CD's files onto your computer first. If you copy the files to your computer, make a note of the location.

USB Driver Installation

Note that there are actually 2 drivers that need to be installed, so you will go through the installation process twice.

Connect the USB Translator Box to an available USB port on your computer, using the provided USB cable.

Windows should display the following Found New hardware prompt:

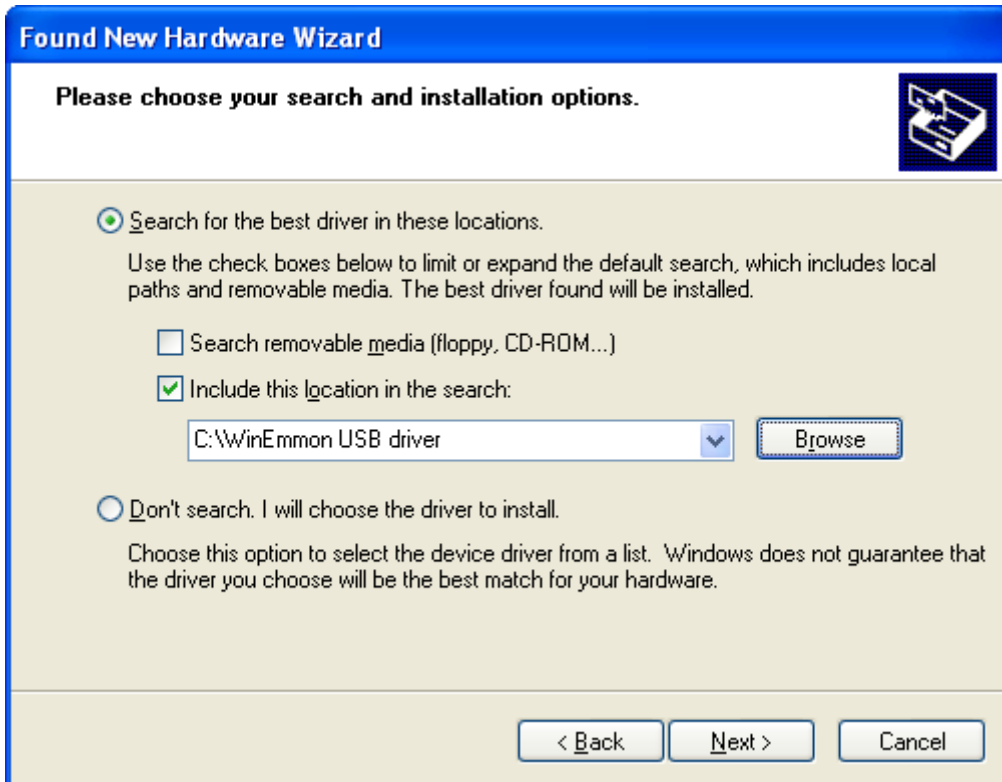


Select the "Install from a List or Specific Location (Advanced)" option, and click Next.

Use this dialog to locate the drivers.

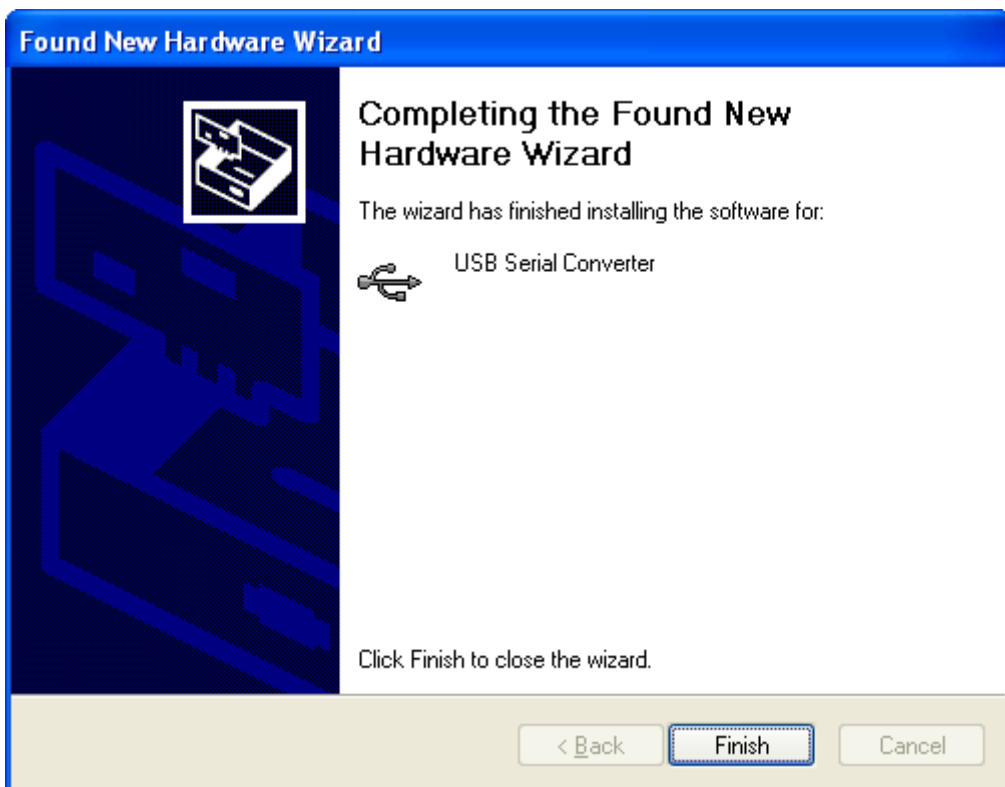
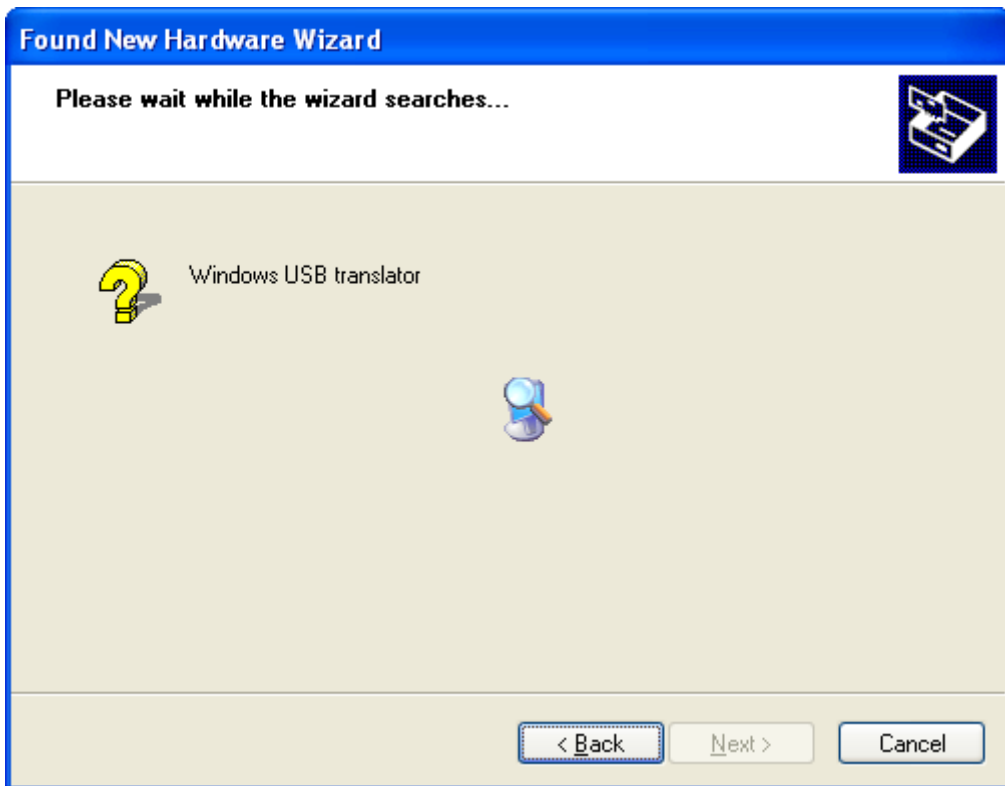
To load the driver from the CD, select the "Search Removable Media" option.

To load the drivers from a folder on your computer, use the Browse button to navigate to the folder that you have previously copied from the CD.



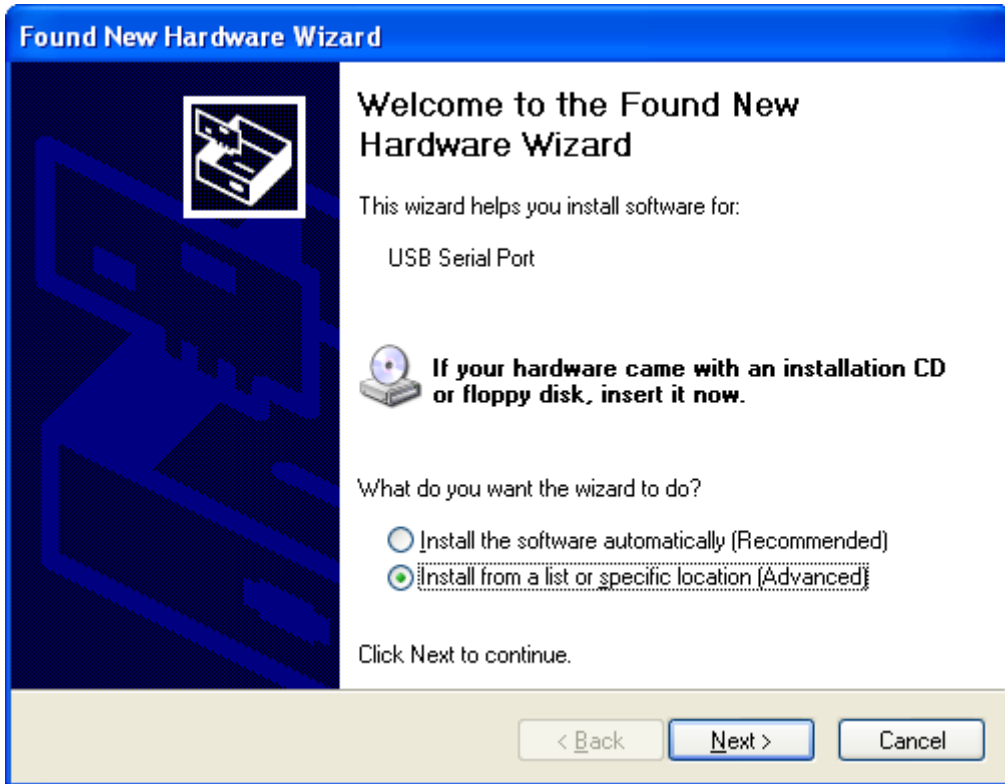
Click Next.

Windows will install the first driver.



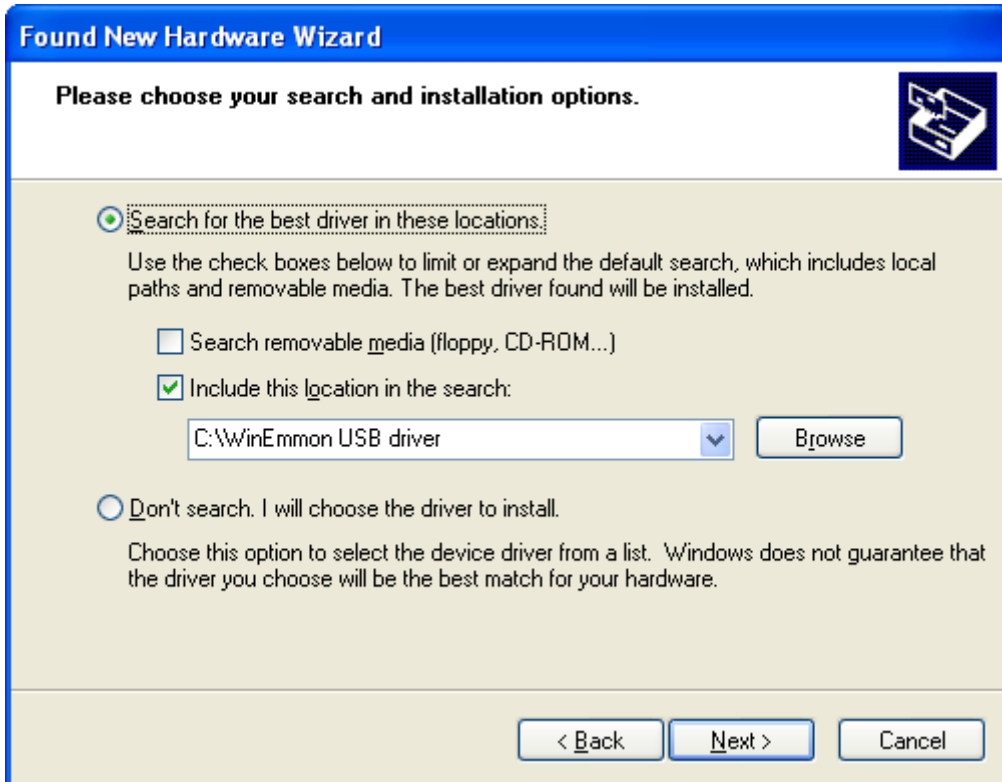
Click Finish to complete the installation of the first driver.

Windows should again display the Found New hardware prompt for the second driver:



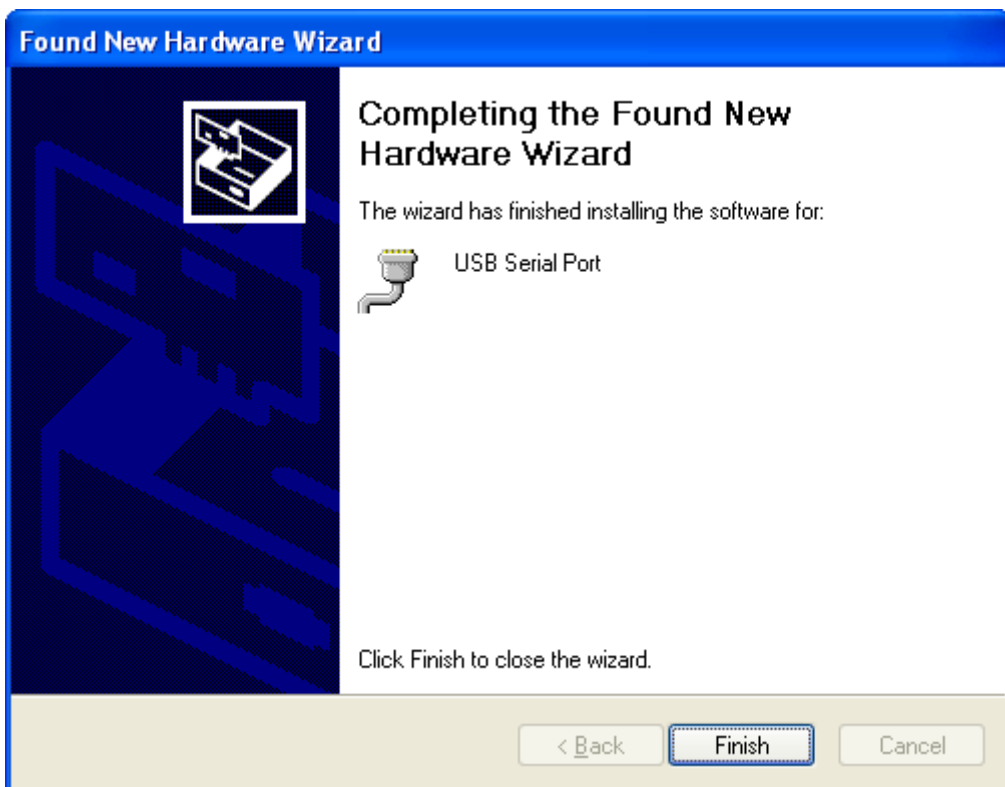
Pick the same option as before.

When Installing the second driver, Windows should already know where to look for the driver



Select the correct option, if needed, then click Next.

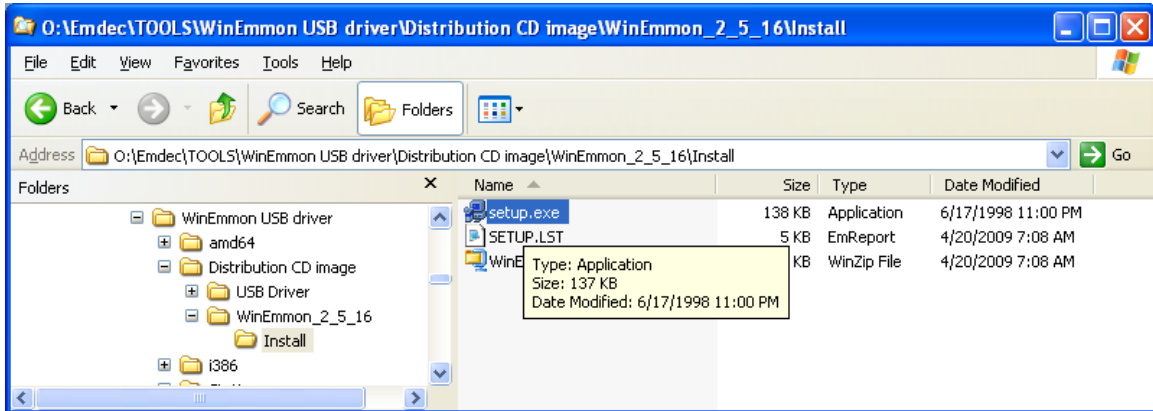
Windows will install the second driver.



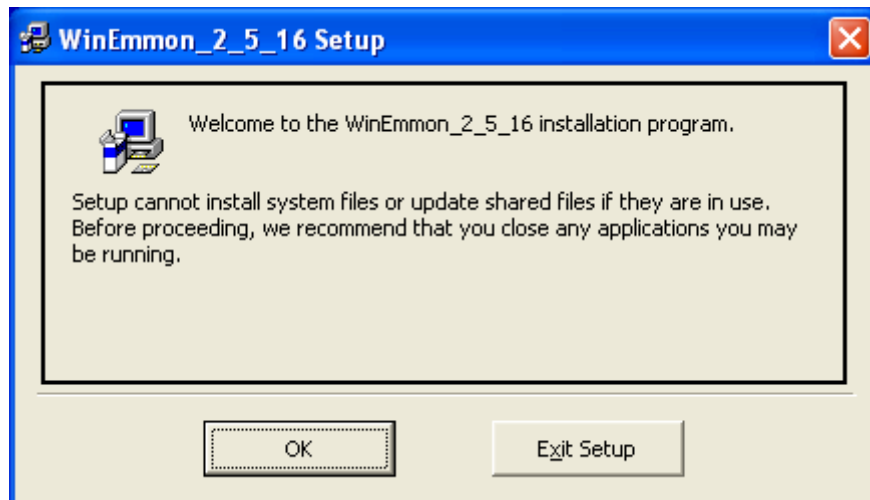
Click Finish to complete the installation of the Second driver. You should now be ready to Start the WinEmmon program and find the assigned Comm port.

WinEmmon Installation

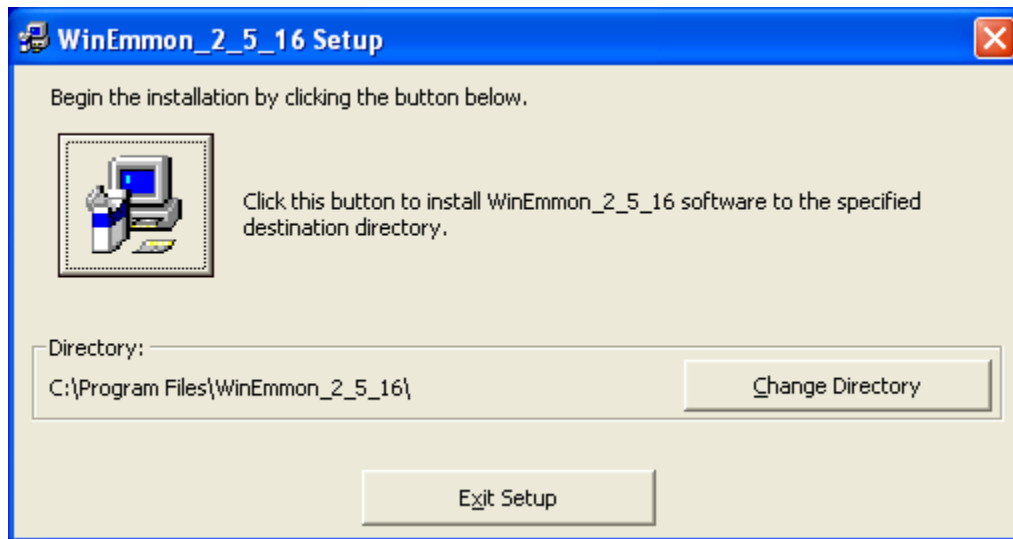
Use Windows Explorer to navigate to the WinEmmon Install folder, located on either the distribution CD or at the location that you had previously created on your computer.



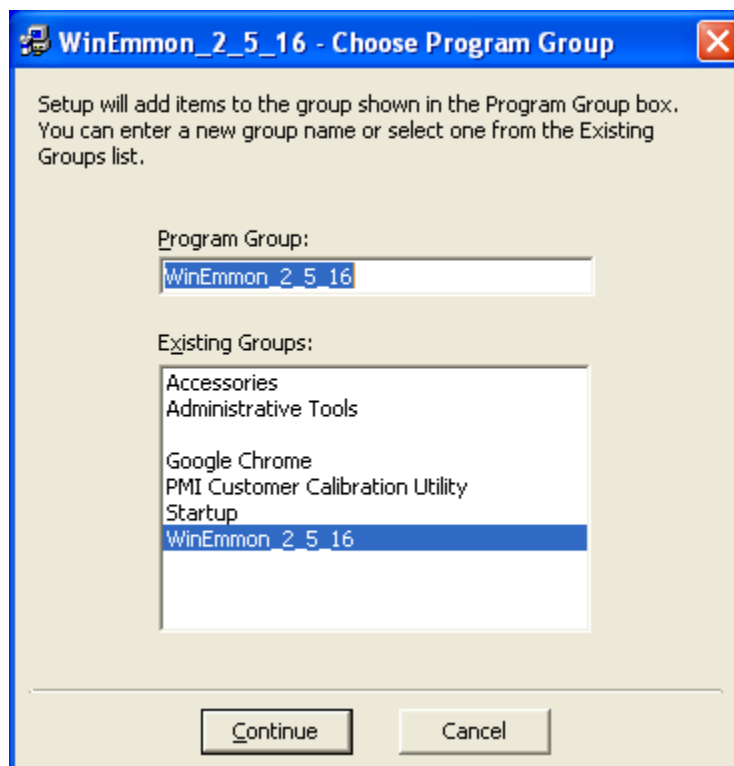
Click on the "setup.exe" Application in the folder. The Setup program should run and then show the "welcome" dialog. Click "OK".



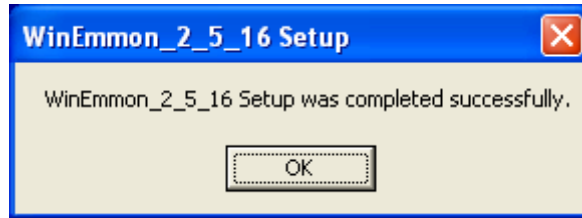
The Setup program then prompts you to select where you want the program to be located on your computer. Click the large button to use the default location, or use the change directory button to specify your own location first.



Setup prompts you for the name of the new program group that will appear on your start menu. Click Continue.



After the installation is complete, you will get this dialog.

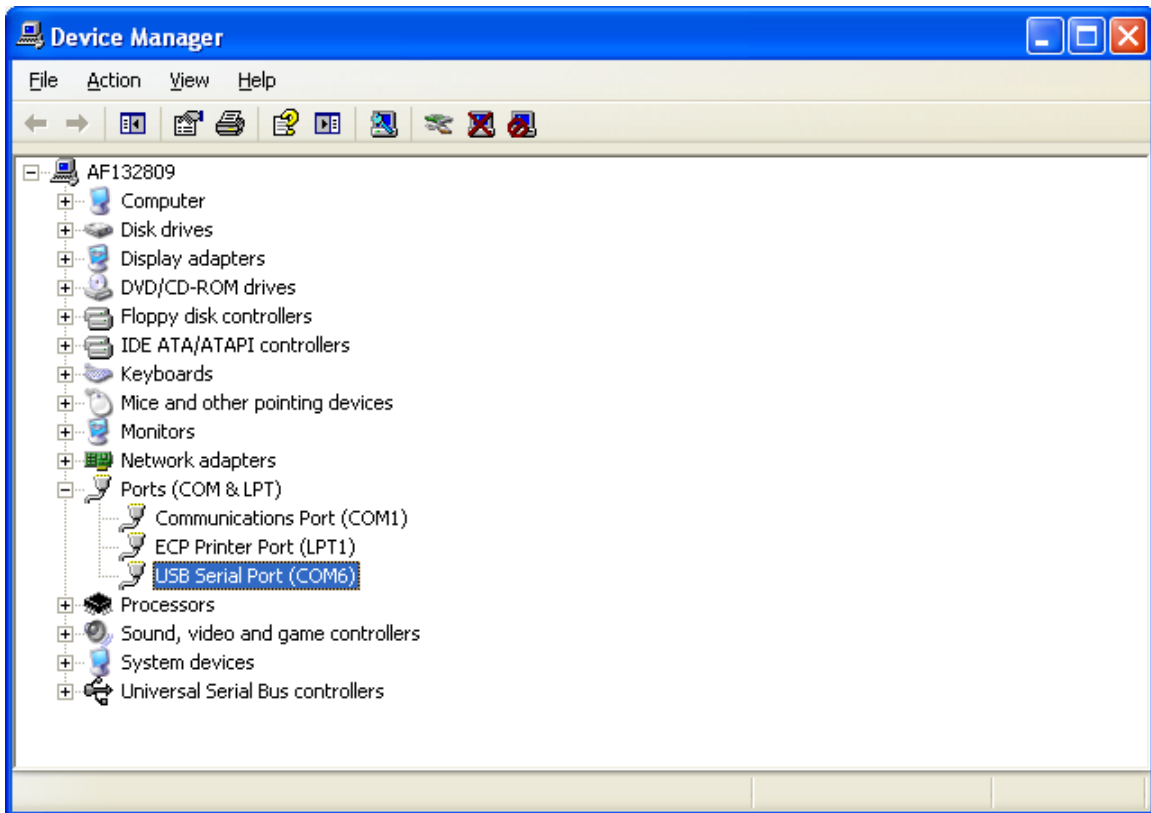


Serial Port Assignment

You can now determine the serial port that has been assigned to the USB driver. Navigate to the device manager by:

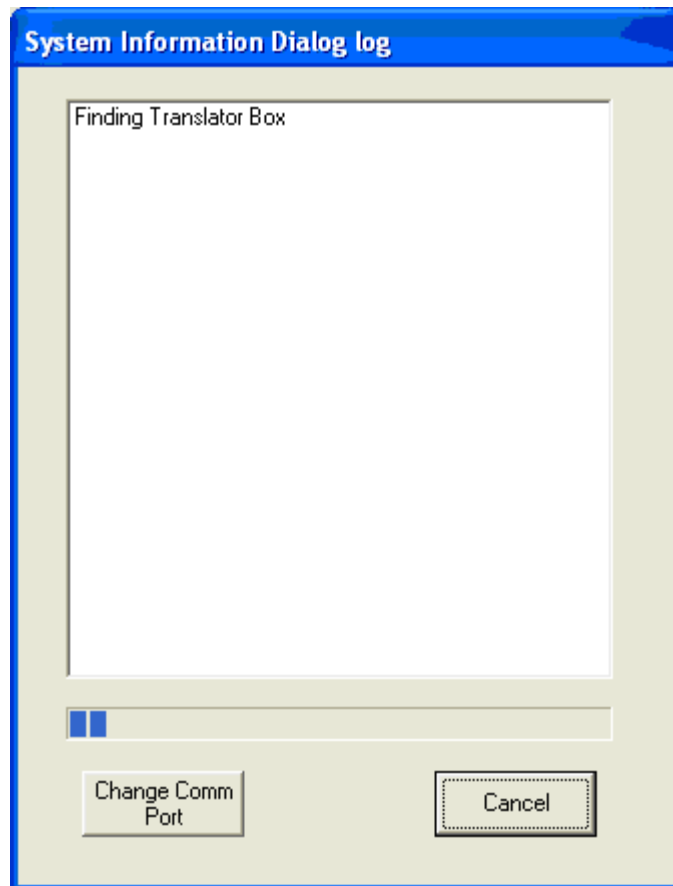
Start > Control Panel > System > Hardware > Device Manager.

Expand the Ports (COM & LPT) to show the assigned ports. Plug in the USB translator box to your computer's USB port. The assigned port should be shown. Make a note of the port number.

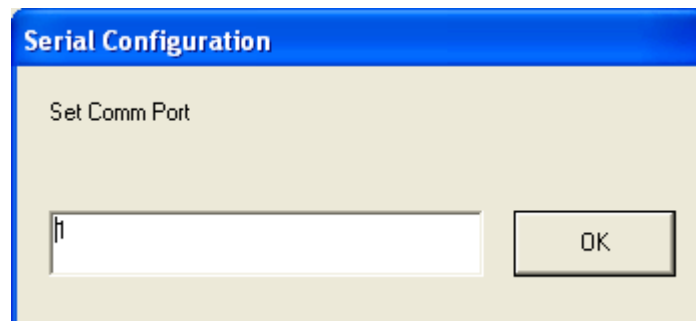


You can now launch the WinEmmon program. Either navigate to the folder where the program has been installed to and click on the program, or use the start menu:

When the program launches it will try to find the translator box, which most likely will not be on the default Comm1 port.

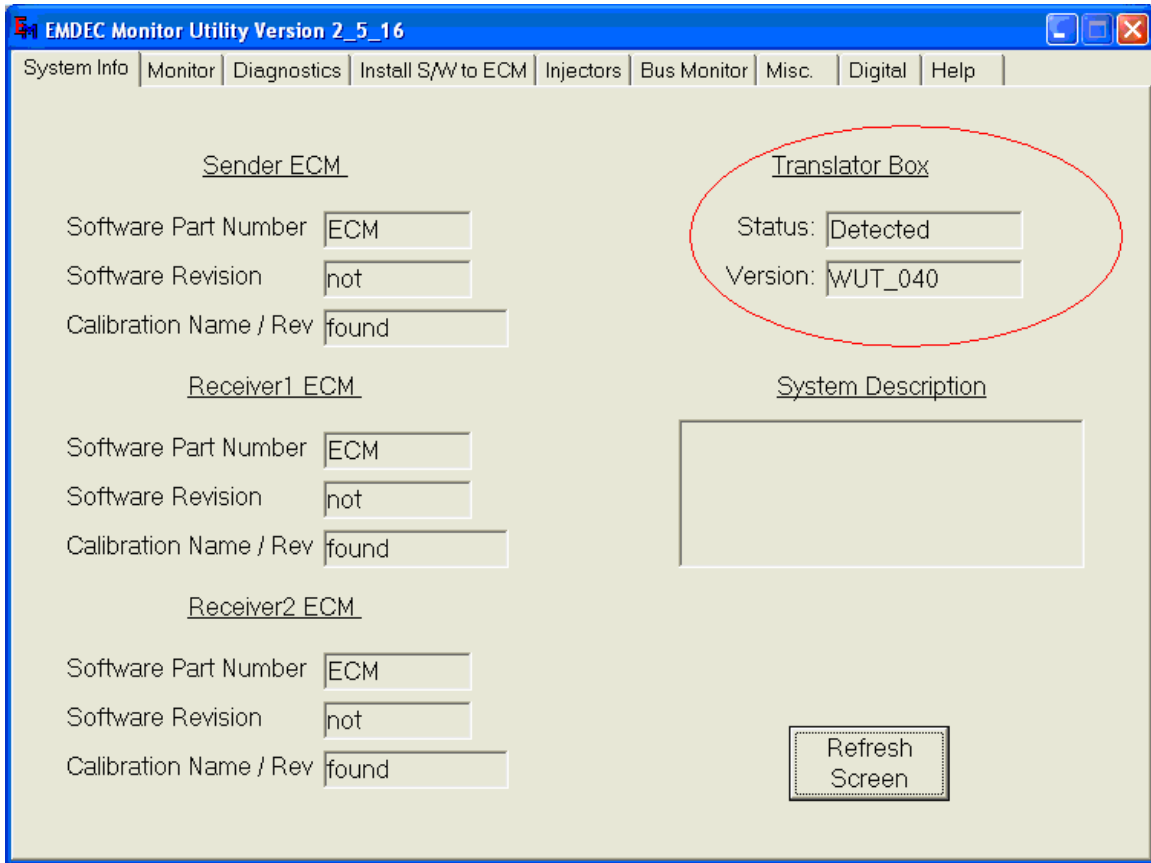


Click the Change Comm Port button.



Use the Serial Configuration Dialog to set the Comm port to the port number assignment previously found in the Device Manager. Click OK

WinEmmon should then start and the translator Box should be shown as detected in the Status Box.



Note: You will need to have the USB Translator Box connected to programmed ECM(s) to see data on the WinEmmon screens.