

# mtu onsite energy Application Notes

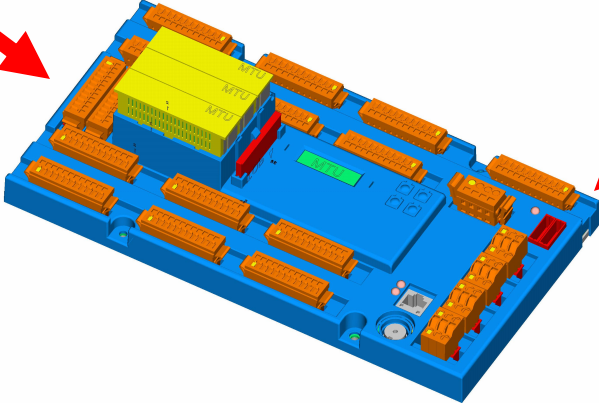
# Basler 2020 Panel and ADEC

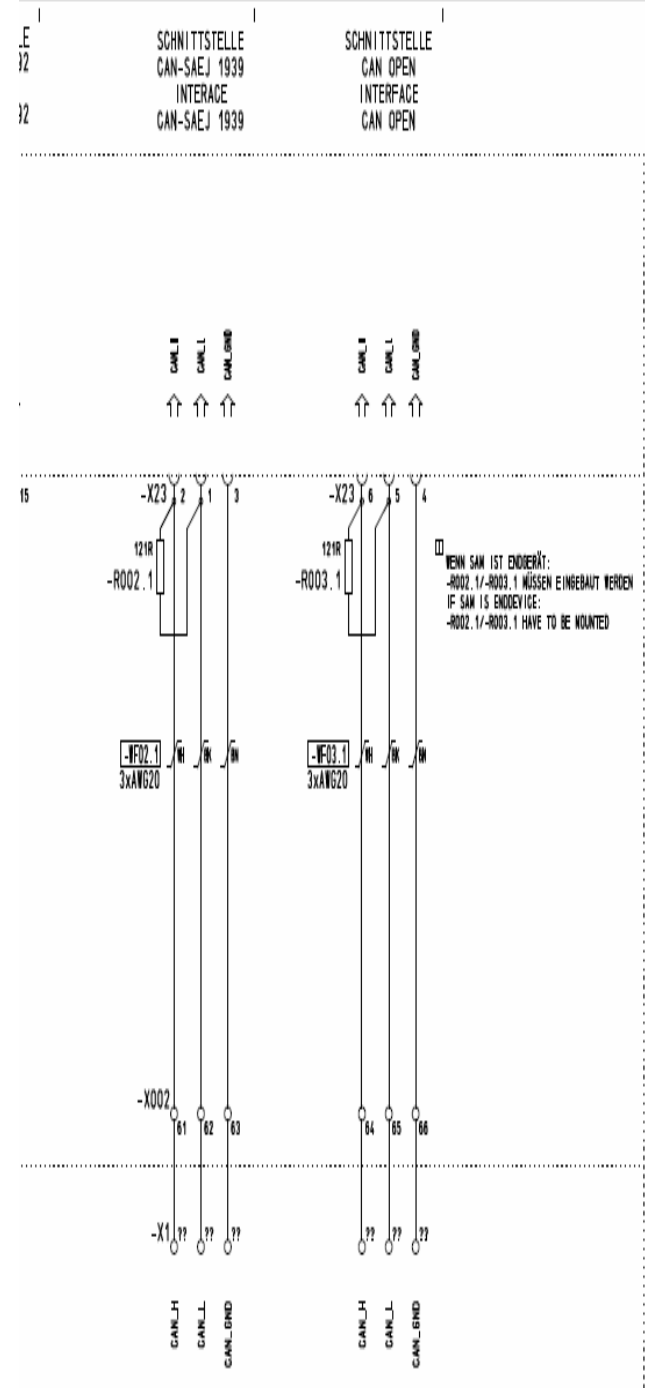
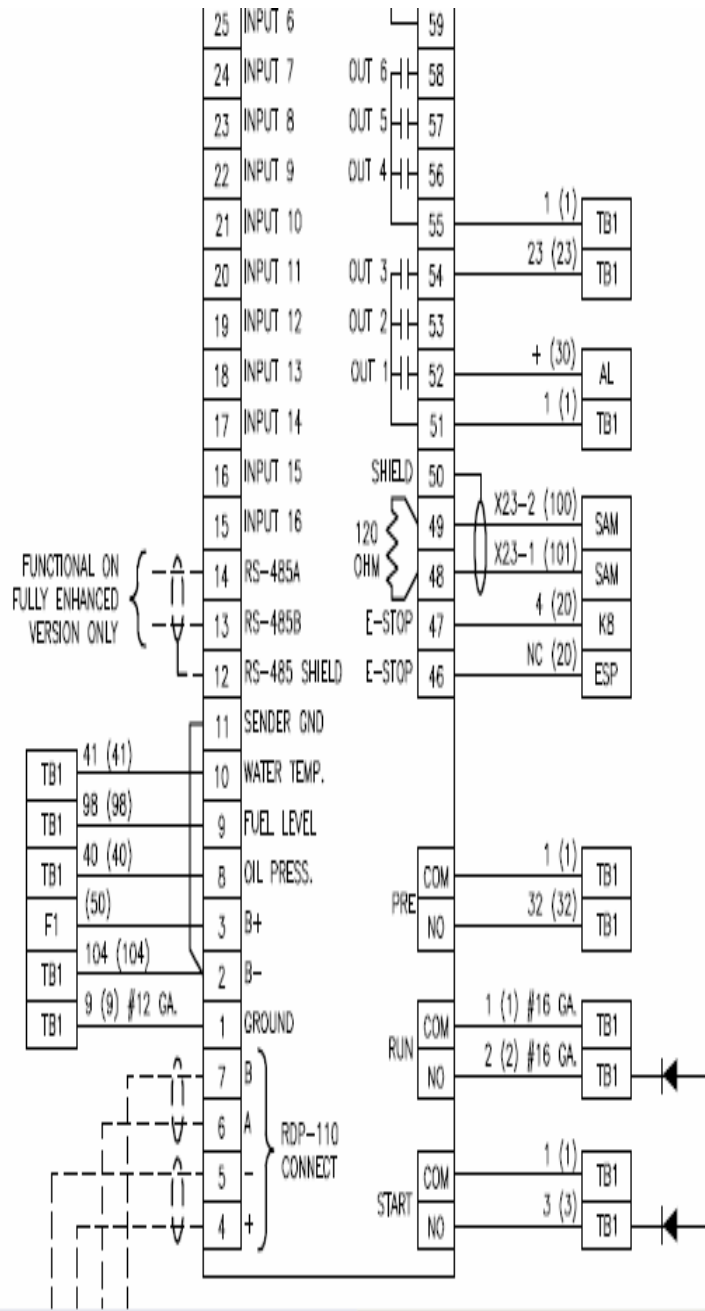


SAE J1939  
Communication

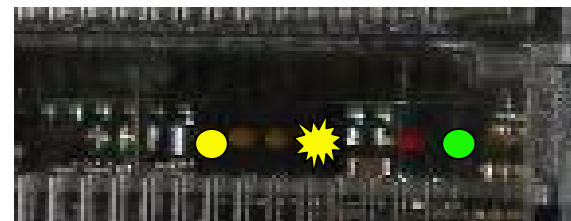



SAM Converts  
communication using  
CCB2 Card

MCS-5  
Communication





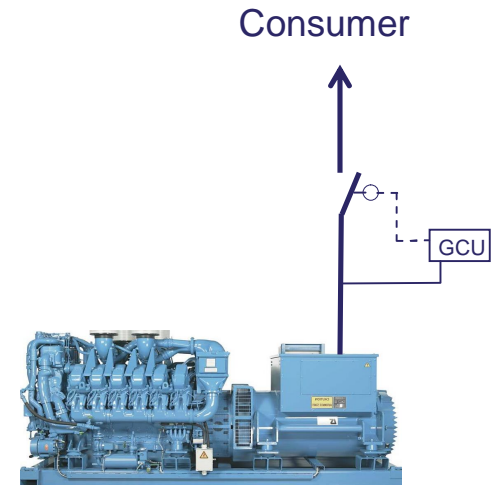
# Communications Troubleshooting

	<b>J1939 Data</b>	<ul style="list-style-type: none"><li>• Normal Operation. 2020 panel is reading J1939 Info</li></ul>
	<b>NC</b>	<ul style="list-style-type: none"><li>• 2020 is not communicating with SAM. Check wiring between SAM and 2020. (120O resistor, wire broken, backwards, etc.)</li></ul>
	<b>SF</b>	<ul style="list-style-type: none"><li>• 2020 is communicating with SAM. Sender Failed on engine.</li></ul>
	<b>NA</b>	<ul style="list-style-type: none"><li>• 2020 is communicating with SAM. Information is not available on CAN line. Issue with ECU-7 wiring or no power on ECU-7. E-Stop pressed.</li></ul>

# Speed Demand Switch

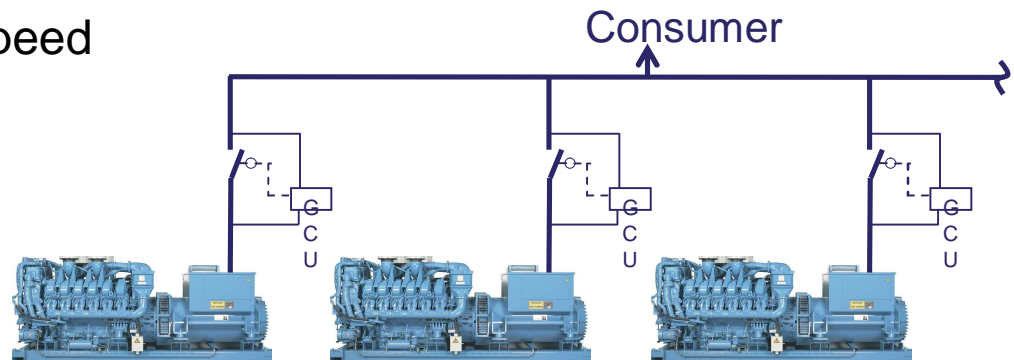
## Single Unit without Utility

Fixed 1800 RPM



## Multiple Units with or without Utility

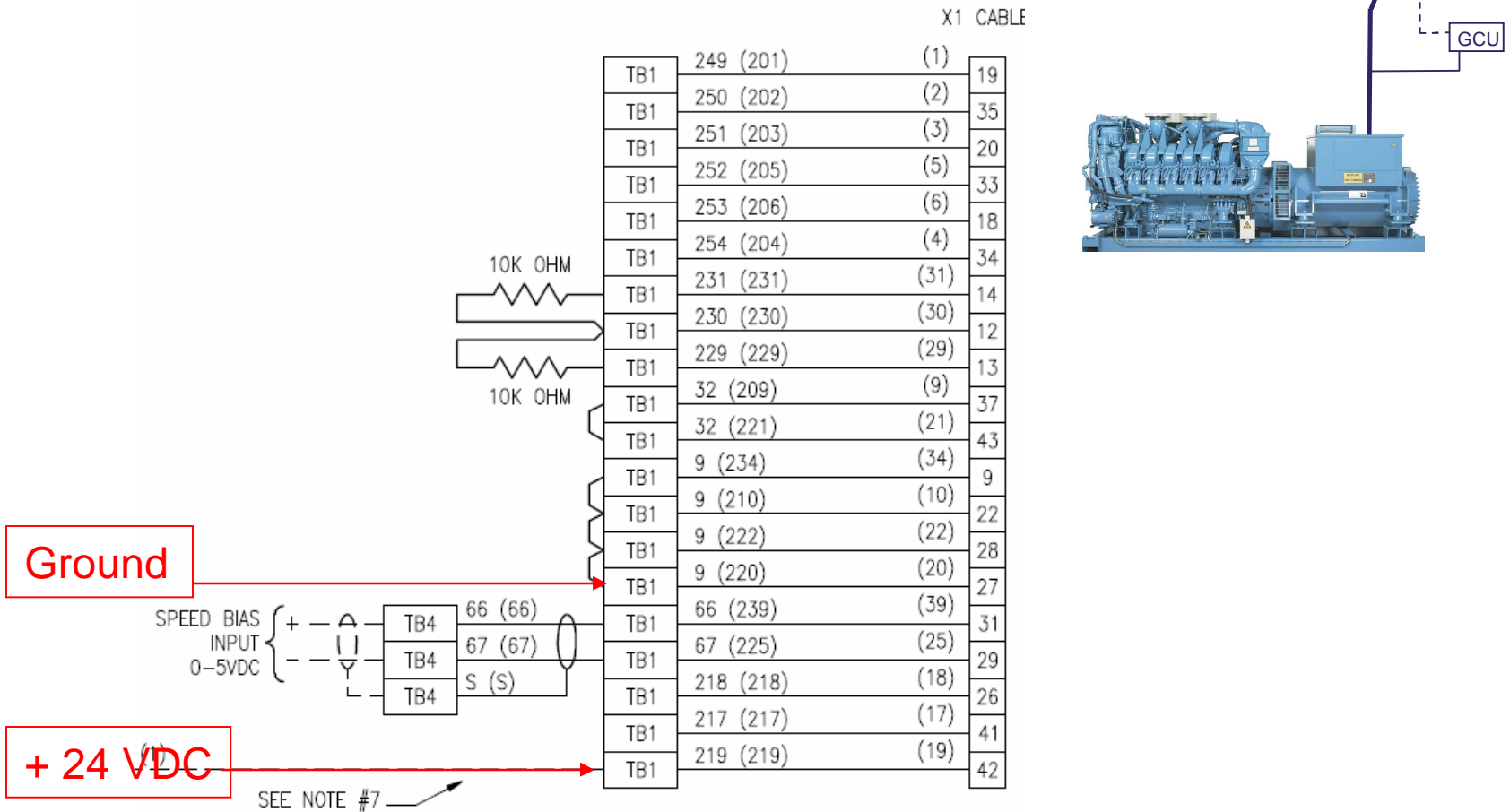
Externally controlled speed  
1750 – 1850 RPM



# Speed Demand Switch

## Single Unit without Utility

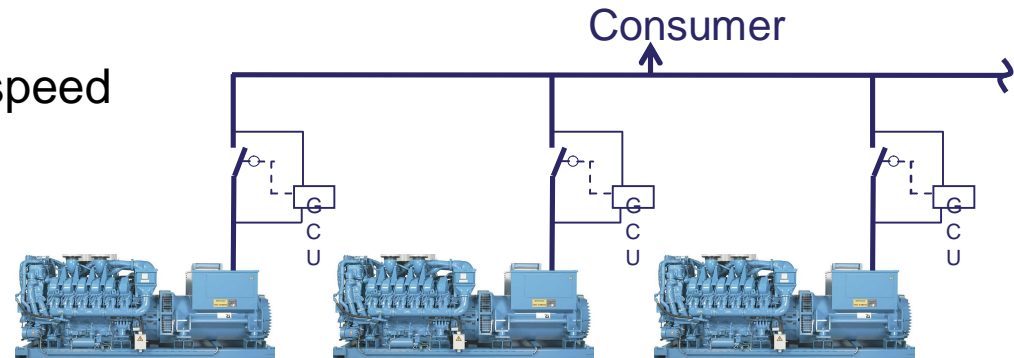
Fixed 1800 RPM



# Speed Demand Switch

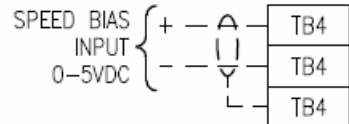
## Multiple Units with or without Utility

Externally controlled speed  
1750 – 1850 RPM



10K OHM	TB1	254 (204)	(4)	34
	TB1	231 (231)	(31)	14
	TB1	230 (230)	(30)	12
10K OHM	TB1	229 (229)	(29)	13
	TB1	32 (209)	(9)	37
	TB1	32 (221)	(21)	43
	TB1	9 (234)	(34)	9
	TB1	9 (210)	(10)	22
	TB1	9 (222)	(22)	28
	TB1	9 (220)	(20)	27
	TB1	66 (239)	(39)	31
	TB1	67 (225)	(25)	29
	TB1	218 (218)	(18)	26
	TB1	217 (217)	(17)	41
	TB1	219 (219)	(19)	42

Ground



+ 0 VDC

SEE NOTE #7