

CHANGES					
ISSUE No.	ALT. NOTE	DATE	ISSUE No.	ALT. NOTE	DATE
1	D0047	18/08/08			

CAD GENERATED DRAWING
 DO NOT ALTER MANUALLY

THIRD ANGLE PROJECTION

MATERIAL

HEAT TREATMENT

FINISH

DRAWN ADF

DATE 18/08/08

SCALE 1:1 DO NOT SCALE

SUPERSEDES 1391008 & 1391009

SIMILAR TO VN62-4541

REF DRG No.

FIRST USED ON

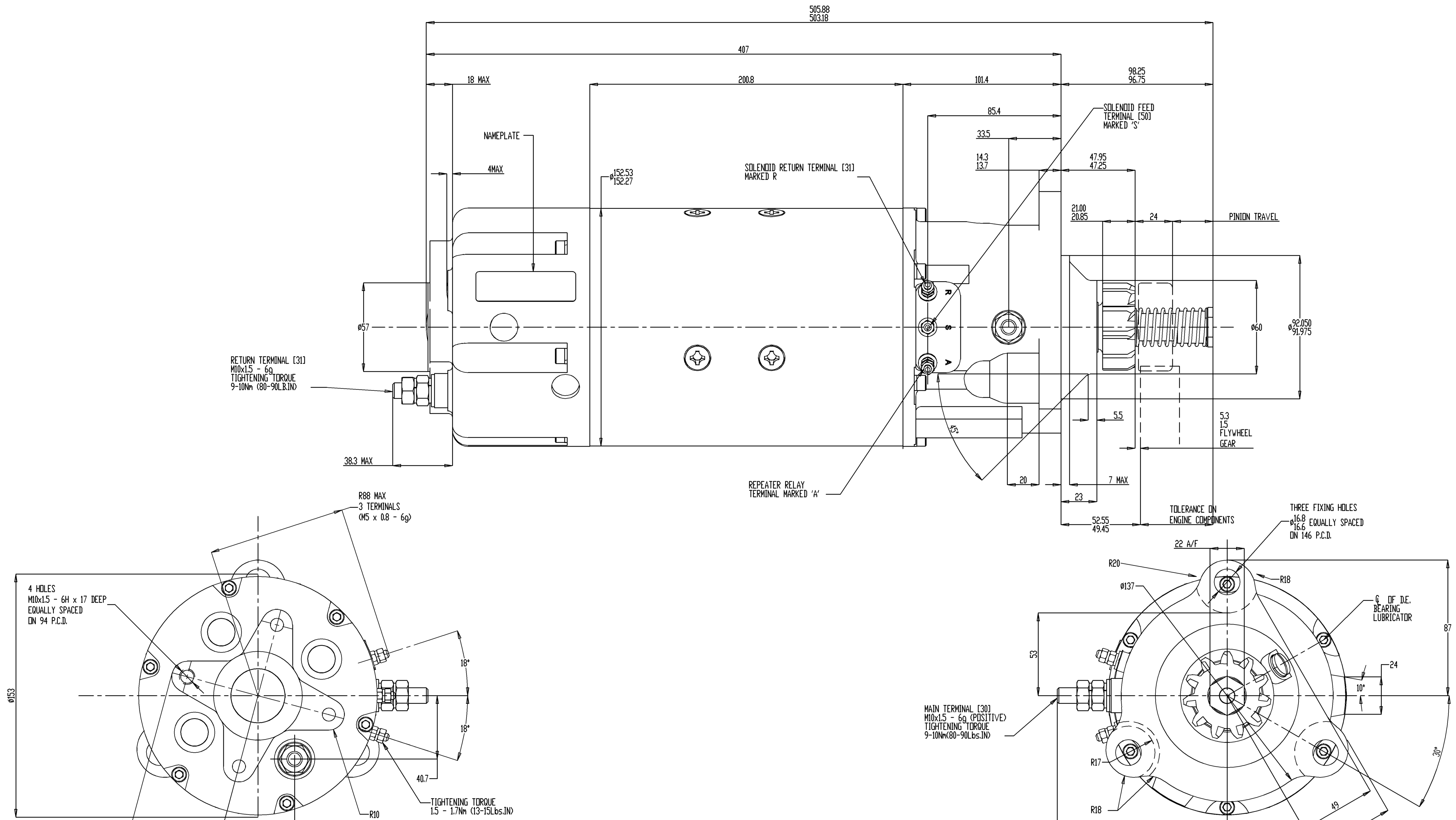
DIMENSIONS IN MILLIMETERS
 REMOVE SHARP EDGES
 TOLERANCES, UNLESS OTHERWISE STATED:-
 LINEAR ± 0.8 ANGULAR ± 1/2°

THIS DRAWING MAY ONLY BE ALTERED IF THE PART REMAINS INTERCHANGEABLE. IF NOT INTERCHANGEABLE A NEW DRAWING WITH A NEW NUMBER MUST BE ISSUED.

COPYRIGHT
 This drawing is copyright and the property of Prestolite Electric Ltd. It must not be copied (in whole or in part) used for manufacture or otherwise disclosed without prior written consent from the company. Any copies of this drawing made by any method must also include a copy of this legend.
 ? Prestolite Electric Ltd. 2008

Prestolite Electric Ltd.
 Heavy Duty Systems
 12-16 Bristol Road
 Greenford
 Middlesex
 UB6 8UP

TITLE
S152 STARTER INSTALLATION



Bsp Fremdtitel/Kaufteil dürfen alle technischen Änderungen am Lieferumfang nur nach unserer vorherigen Genehmigung vorgenommen werden. Technical modifications to third party or purchased parts require our prior permission.		Benennung/Title LU/Vendor Part STARTER STARTER	Symbol/ Size AO
	MTU Friedrichshafen GmbH	Zeichnungs-Nr./Drawing No. Y52417200007	Blatt/ Sheet 1
	Abt./Dept. TKF	Datum/Date 22.08.2008	
	Aut./Author	46314	Name Börsch/Bahl
	Bevlr.	BR4000	Fg/FCS 172/05

- NOTES: -
- THE FITTING OF A STARTER LOCKOUT UNIT (PART NUMBER 857830) IS RECOMMENDED TO PREVENT ENERGISING OF THE STARTER MOTOR WHILST THE ENGINE IS RUNNING.
 - THIS STARTER IS SUITABLE FOR NORMAL ROAD VEHICLES, OFF HIGHWAY EQUIPMENT AND INDUSTRIAL SETS.
 - WEIGHT 31.75kg.
 - IP54K.
 - OIL SEALED FOR USE WITH WET CLUTCH.
 - CLOCKWISE ROTATION WHEN VIEWED ON DRIVE END.
 - 24 VOLT TOTALLY INSULATED.
 - OPERATING TEMPERATURE -40°C TO +100°C.
 - MTU PART NUMBER X52417200007.
 - MINIMUM INSULATION 1MΩ AT 500v D.C. (ON NEWMACHINES).
 - SOLENOID CURRENT 20A AT 20°C 24v.
 - PRESTOLITE DISPATCH No. 1391010. TYPE No. S152-24-10.
 - TWIN OPERATION OF THE S152 STARTER MOTOR REQUIRES A SPECIAL CONTROL CIRCUIT. CONTACT PRESTOLITE ELECTRIC FOR APPLICATION GUIDELINES PRIOR TO USING S152 IN DUAL APPLICATIONS.
 - THE S152 HAS AN INTERNAL RESISTOR THAT IS RATED AT 250A FOR 10 SECONDS. DURING NORMAL OPERATION, THE RESISTOR (FIRST CONTACT) IS SHORT CIRCUITED WITHIN 500ms AS THE MOTOR GOES ONTO FULL POWER (SECOND CONTACT).
 - IF THE STARTER FAILS TO FULLY ENGAGE WITH THE RING GEAR, THE SECOND CONTACT WILL NOT CLOSE TO PREVENT DAMAGE OCCURRING TO THE RESISTOR. TERMINAL 'S' SHOULD BE DE-ENERGISED IF NO SPEED SIGNAL IS SEEN FROM THE ENGINE WITHIN 1 SECOND.
 - A MAXIMUM OF EIGHT CONSECUTIVE UNSUCCESSFUL ATTEMPTS TO ENGAGE THE PINION INTO THE RING GEAR IS PERMITTED. FOLLOWING EACH UNSUCCESSFUL ATTEMPTED ENGAGEMENT, THE 'S' TERMINAL MUST REMAIN DE-ENERGISED FOR A MINIMUM OF 5 SECONDS.
 - THIS DRAWING IS TO BE USED IN CONJUNCTION WITH P.A.C.U. NUMBER 040.

- PINION DETAILS: -
- 11 TEETH CUT ON A 12 TOOTH BLANK.
 - 20° PRESSURE ANGLE.
 - 6/8 DIAMETRAL PITCH.
 - O.D. = 56.67/56.57mm.
 - P.C.D. = 46.56mm.
 - ROOT DIAMETER = 42.15/42.4mm

