
INSTALLATION INSTRUCTIONS

Original Issue Date: 7/95

Model: 350-1600 kW

Market: Industrial

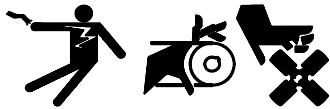
Subject: Generator Strip Heater Kits PA-272800, PA-272800-SD,
PA-272801, PA-272801-SD, PA-279750, PA-279750-SD

Introduction

The generator strip heater kit heats the unit in cold climates and helps prevent condensation from forming in the generator. Observe the following safety precautions while installing the kit.

Safety Precautions



⚠ WARNING



Accidental starting.
Can cause severe injury or death.

Disconnect the battery cables before working on the generator set.
Remove the negative (-) lead first when disconnecting the battery.
Reconnect the negative (-) lead last when reconnecting the battery.

Disabling the generator set. Accidental starting can cause severe injury or death. Before working on the generator set or connected equipment, disable the generator set as follows: (1) Move the generator set master switch to the OFF position. (2) Disconnect the power to the battery charger. (3) Remove the battery cables, negative (-) lead first. Reconnect the negative (-) lead last when reconnecting the battery. Follow these precautions to prevent starting of the generator set by an automatic transfer switch, remote start/stop switch, or engine start command from a remote computer.

⚠ WARNING	
	
<p>Hazardous voltage. Moving rotor. Can cause severe injury or death.</p> <p>Operate the generator set only when all guards and electrical enclosures are in place.</p>	

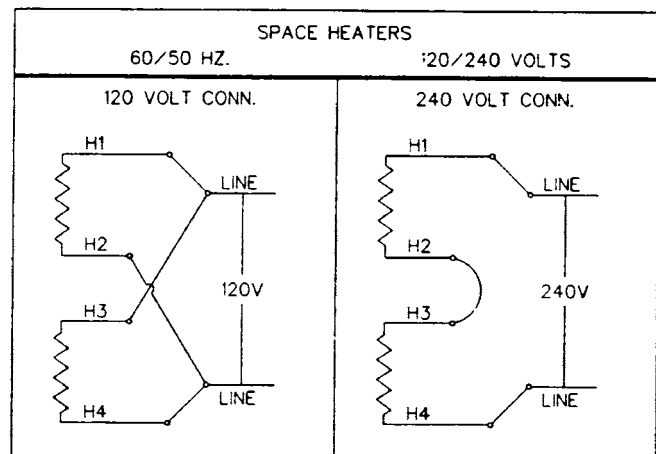
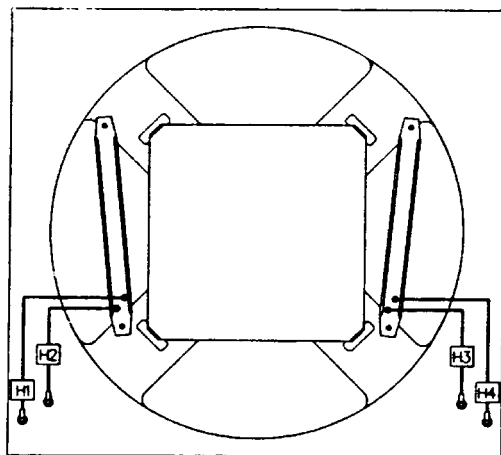
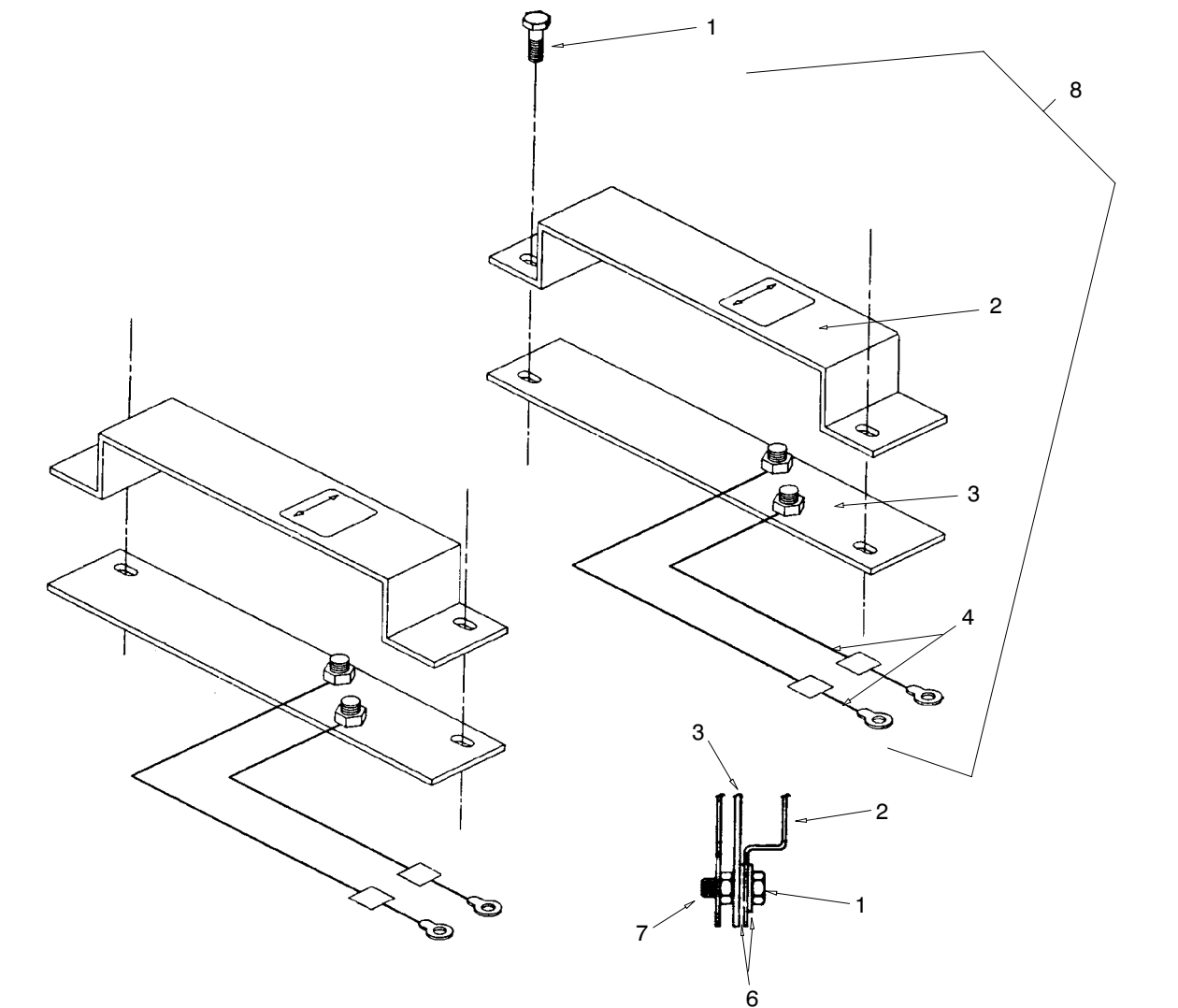
Grounding electrical equipment. Hazardous voltage can cause severe injury or death. Electrocution is possible whenever electricity is present. Open the main circuit breakers of all power sources before servicing the equipment. Configure the installation to electrically ground the generator set, transfer switch, and related equipment and electrical circuits to comply with applicable codes and standards. Never contact electrical leads or appliances when standing in water or on wet ground because these conditions increase the risk of electrocution.

Installation Procedure

1. Move the generator set master switch to the OFF position. Disconnect generator set engine starting battery, negative (-) lead first.
2. Remove junction box panels to expose end bracket and stator.
3. Connect lead assemblies to strip heaters as shown in Figure 1 for 350-800 kW models or Figure 2 for 900-1600 kW models.
4. Assemble strip heaters (272802 or 272803 or 279749) and guards, screws (X-465-7), washers (X-25-40), and elastic stop nuts as shown in Figure 1 for 350-800 kW models, and Figure 2 for 900-1600 kW models with four space heaters. Do not assemble jam nut (X-101-8) tight against heater strip. Heater strip needs room for expansion when operating.
5. Align strip heater and guard with the predrilled holes in the end bracket and secure with screws (X-465-7) provided. See Figure 1 or Figure 2. Tighten jam nut against end bracket. Verify that jam nuts are not tight against the heater strips.
6. Connect AC voltage source using wiring diagram in Figure 1 or Figure 2.
7. Replace junction box side panels.
8. Check that the generator master switch is in the OFF position and reconnect engine starting battery, negative (-) lead last.

Parts List

Kits: PA-272800, PA-272800-SD, PA-272801, PA-272801-SD, PA-279750, PA-279750-SD					
Qty.	Description	Common Parts	Unique Parts		
			PA-272800 PA-272800-SD	PA-272801 PA-272801-SD	PA-279750 PA-279750-SD
8	Washer, plain	X-25-8			
4	Nut, elastic stop 1/4-20	X-101-8			
4	Screw	X-465-7			
1	Heater assembly, space		272803	272802	279749

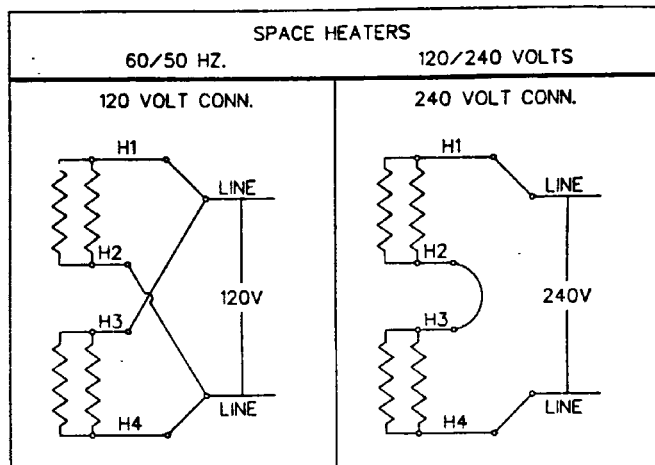
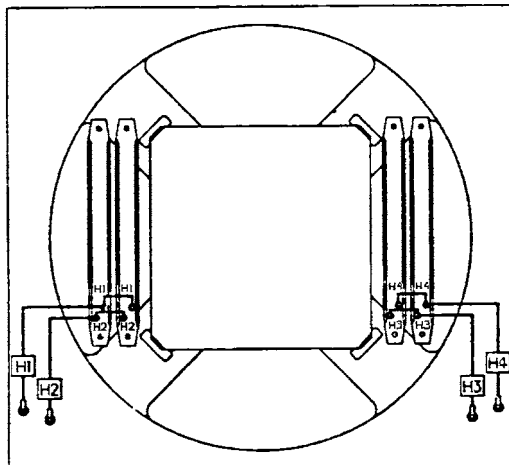
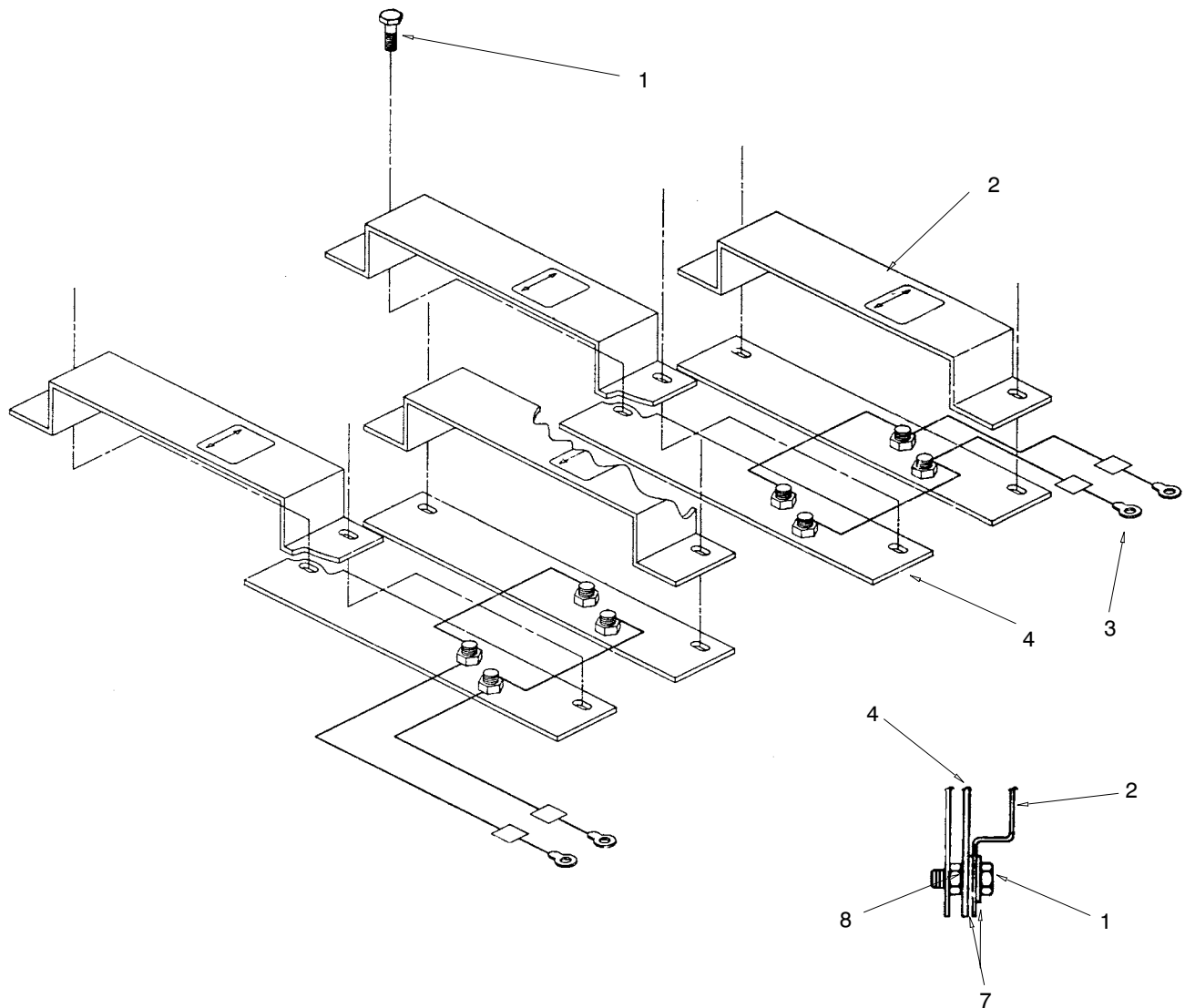


S-272000-C

1. Screw
2. Strip heater guard
3. Strip heater
4. Lead assembly

5. Screw (X-465-7)
6. Washers (X-25-53)
7. Nut (X-101-8)
8. Strip heater assembly (includes items 2,3,4)

Figure 1 350-800 kW Strip Heater Assembly



T-272000-A

1. Screw (X-465-7)
2. Strip heater guard
3. Lead assembly

4. Strip heater
5. Washers (X-25-53)
6. Nut (X-101-8)

Figure 2 900-1600 kW Strip Heater Assembly