

---

## INSTALLATION INSTRUCTIONS

---

Original Issue Date: 8/95

Model: 20-180 kW

Market: Industrial

Subject: Inner Tank Leak Alarm Kits PA-224806, PA-224806-SD

The inner tank leak alarm indicates the inner tank has leaked into the outer tank and the double-wall subbase fuel tank should be replaced.



**Accidental starting.**  
**Can cause severe injury or death.**

Disconnect battery cables before working on generator set (negative lead first and reconnect it last).

**Accidental starting can cause severe injury or death.** Turn generator set master switch to OFF position, disconnect power to battery charger, and remove battery cables (remove negative lead first and reconnect it last) to disable generator set before working on any equipment connected to generator set. The generator set can be started by automatic transfer switch or remote start/stop switch unless these precautions are followed.

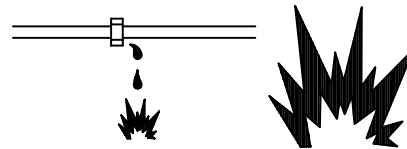
### ⚠ WARNING



**Fire.**  
**Can cause severe injury or death.**

Do not smoke or permit flame or spark to occur near fuel or fuel system.

### ⚠ WARNING



**Explosive fuel vapors.**  
**Can cause severe injury or death.**

Use extreme care when handling, storing, and using fuels.

## Installation

1. Move the generator set master switch to the OFF position. Disconnect generator set engine starting battery, negative (–) lead first.
2. Attach leak alarm bracket (336505) to annunciator box assembly (A-224861).
3. Mount annunciator box assembly to junction box. See Figure 1
4. Remove pipe plug from tank for leak alarm sensor. See Figure 1 for pipe plug location. Apply pipe sealant to threads of leak alarm (A-276795) and install in tank.
5. Connect leak alarm wiring harness to annunciator box assembly and leak alarm sensor.
6. Connect wire harness power leads to either battery or starter. See Figure 1 Leak Alarm Battery Connections.
7. With generator set master switch in the OFF position, reconnect generator set engine starting battery, negative (–) lead last.

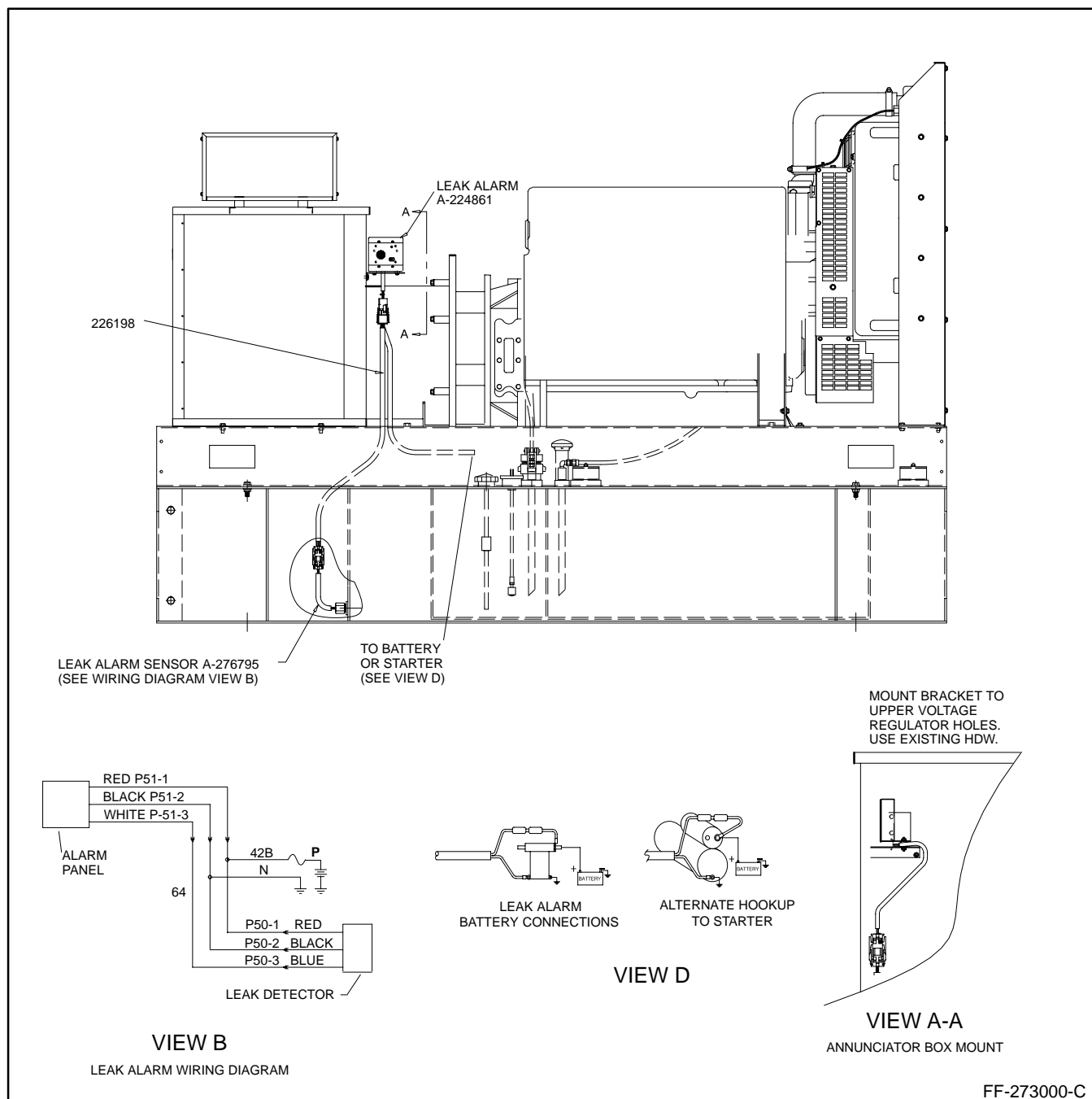


Figure 1. 20-180 kW Double-Wall Subbase Fuel Tank Leak Alarm

Parts List		
KITS PA-224806, PA-224806-SD		
Qty.	Description	Part Number
1	Box, annunciator	A-224861
1	Sensor, leak alarm	A-276795
1	Harness, leak alarm wiring	226198
1	Bracket, leak alarm	336505