
INSTALLATION INSTRUCTIONS

Original Issue Date: 8/95

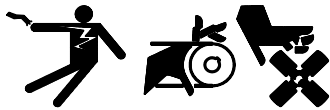
Model: 20-180ROZJ (12/24 Volt)

Market: Industrial

Subject: Prime Power Battery Charging Kits PA-336674, PA-336690,
PA-360372, PA-360373

Use the prime power battery charging kits on 20-180ROZJ generator sets used in prime power applications. Observe the following safety precautions while installing the kit.

⚠ WARNING



**Accidental starting.
Can cause severe injury or death.**

Disconnect battery cables before working on generator set. (Remove negative (–) lead first when disconnecting battery. Reconnect negative (–) lead last when reconnecting battery.)

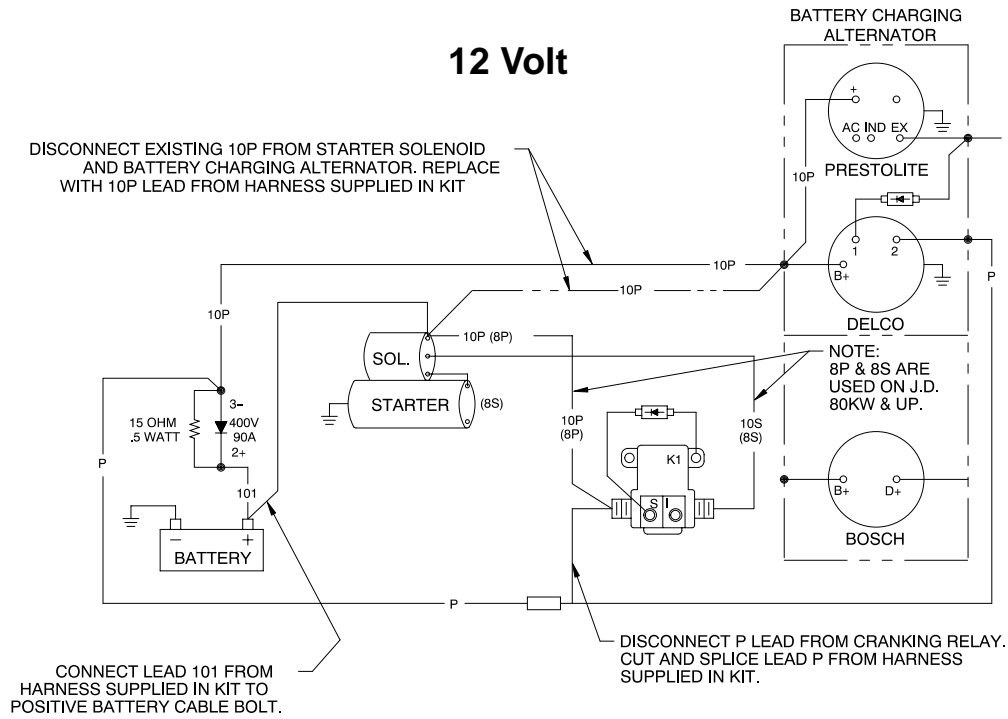
Disabling generator set. Accidental starting can cause severe injury or death. Before working on the generator set or connected equipment, disable the generator set as follows:

- 1) Turn the generator set master switch to OFF position.
- 2) Disconnect power to battery charger.
- 3) Remove battery cables (remove negative (–) lead first). Reconnect negative (–) lead last when reconnecting battery. Follow these precautions to prevent starting of generator set by an automatic transfer switch or remote start/stop switch.

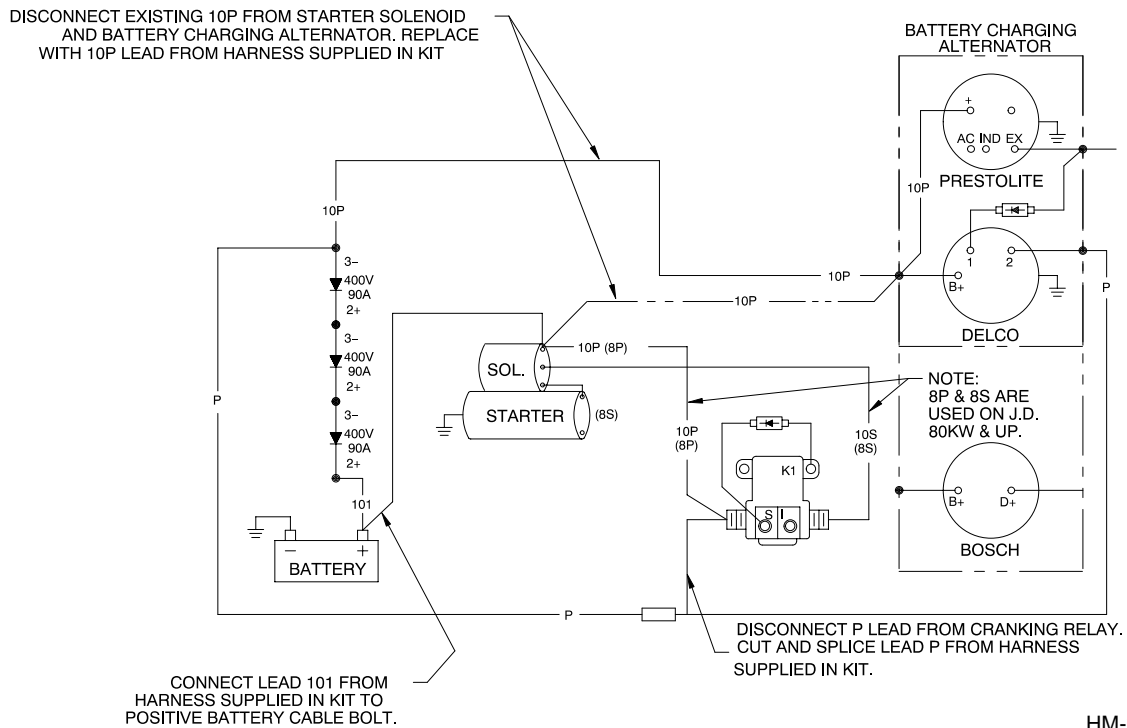
Installation

1. Place the generator master switch in the OFF position.
2. Disconnect power to battery charger, if equipped.
3. Disconnect generator set engine starting battery, negative (–) lead first.
4. Disconnect lead 10P from engine alternator.
5. Follow lead 10P back to starter solenoid. Disconnect lead 10P from starter solenoid and discard.
6. Connect lead 10P of new wiring harness (20-60 kW 336678, 80-180 kW 336691) to battery charging alternator. See Figure 1.
7. Disconnect lead P from the cranking relay (K1) inside the junction box. See Figure 1.
8. Cut the ring terminal off of lead P.
9. Splice the original lead P to lead P of the new wiring harness. Tape splice to insulate.
10. Drill diode mounting holes as required. See Figure 2.
11. Apply compound (287945) between diode and mounting bracket (336679).
12. Mount diode(s) inside junction box with bracket(s), screws (X-50-6), and nuts (X-70-3). See Figure 2 for location.
13. **24 Volt.** Connect leads (SWJP-1010-1414) between diodes. See Figure 2.
14. **12 Volt.** Secure terminals (X-285-3) to resistor (X-6060-25). Connect resistor between diode terminal 2 and 3. See Figure 2.
15. Route leads P, 10P, and 101 underneath the generator alternator to diode(s). Follow existing harness where possible.
16. Connect leads 10P and P to diode terminal 3 (–). See Figure 2.
17. Connect lead 101 to diode terminal 2 (+). See Figure 2.
18. Connect lead 101 with ring terminal to battery cable positive (+) terminal.
19. Check that the generator master switch is in the OFF position.
20. Reconnect the generator set engine starting battery, negative (–) lead last.
21. Reconnect power to battery charger, if equipped.
22. Place the generator master switch in the AUTO position.

12 Volt



24 Volt



HM-273000-B

Figure 1. Wiring Harness Connection

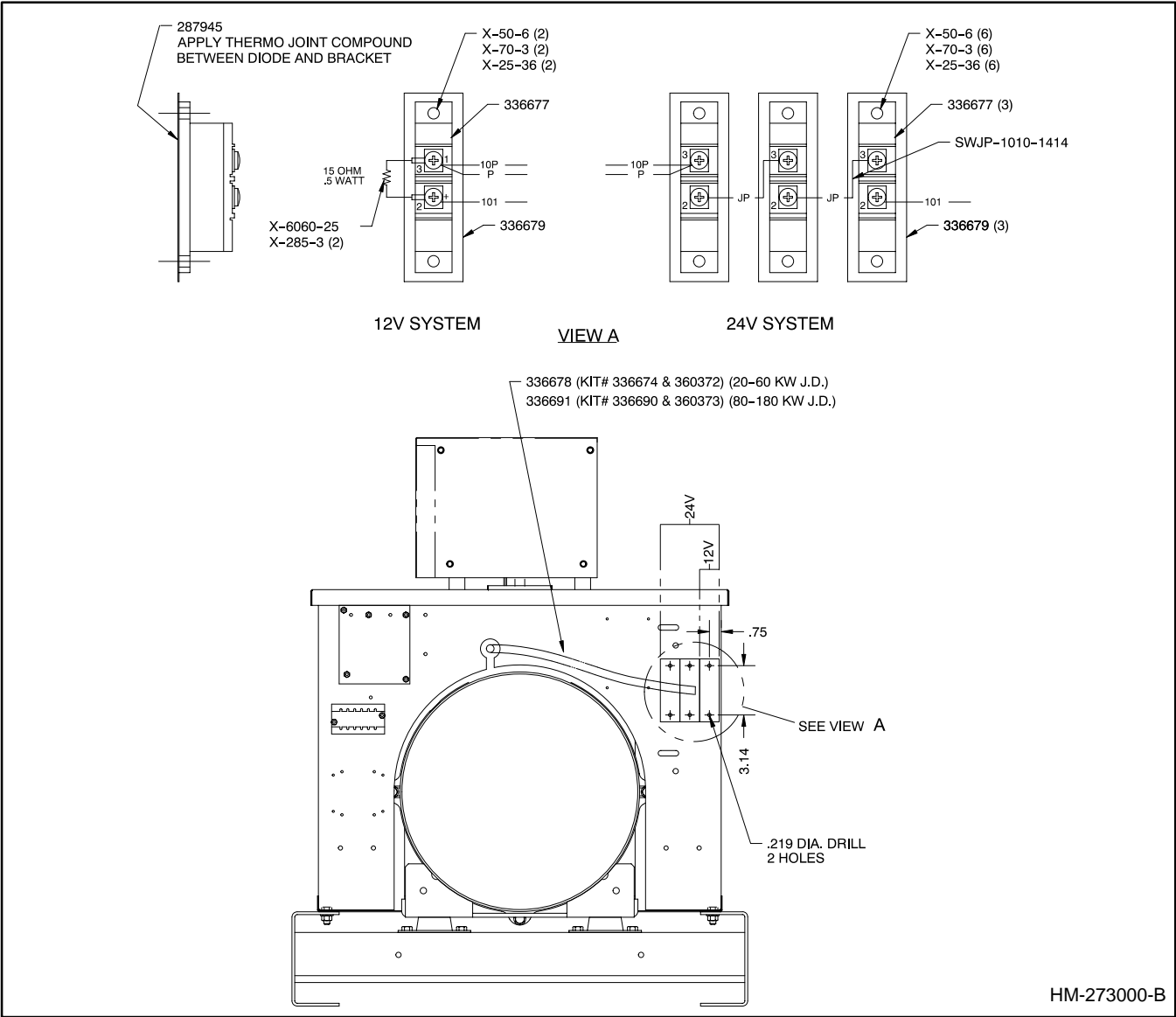


Figure 2. Diode Installation

Prime Power Battery Charging Kit

| Parts List | | | | | | |
|--|---------------------------|--------------|--------------|------------|----------------|----------------|
| Kits: PA-336674, PA-336690, PA-360372, PA-360373 | | | Unique Parts | | | |
| Qty. | Description | Common Parts | PA-336674 | PA-336690 | PA-360372 | PA-360373 |
| | Screw, r.h.m. 10-32 x 3/4 | | (2) X-50-6 | (6) X-50-6 | (2) X-50-6 | (6) X-50-6 |
| | Nut, hex 10-32 | | (2) X-70-3 | (2) X-70-3 | (6) X-70-3 | (6) X-70-3 |
| 2 | Terminal | | X-285-3 | X-285-3 | | |
| 1 | Resistor, 15 ohm 1/2W | | X-6060-25 | X-6060-25 | | |
| | Compound | | (1) 287945 | (1) 287945 | (3) 287945 | (3) 287945 |
| | Diode, power | | (1) 336677 | (1) 336677 | (3) 336677 | (3) 336677 |
| | Harness, wiring | | (1) 336678 | (1) 336691 | (3) 336678 | (3) 336691 |
| | Bracket, diode mounting | | (1) 336679 | (1) 336679 | (1) 336679 | (3) 336679 |
| 2 | Lead | | | | SWJP-1010-1414 | SWJP-1010-1414 |